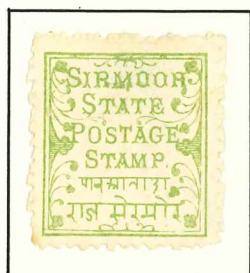
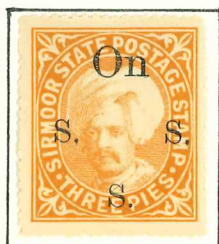
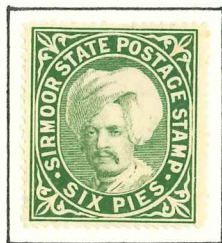
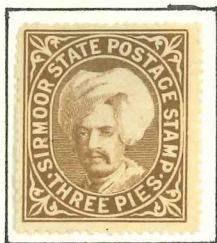


HIS HIGHNESS  
RAJA SIR SHAMSHER PARKASH

RAJA OF SIRMOR  
1856 - 1898







HIS HIGHNESS  
RAJA SIR SURINDAR BIKRAM  
PARKASH

RAJA OF SIRMUR  
1898 - 1911



15



14



15



11



15



15



14  $\frac{3}{4}$



15



15



14  $\frac{3}{4}$



14  $\frac{3}{4}$  11



15



14



15



14