

1½d. GEORGE V PROFILE HEAD STAMP - 'PENC' VARIETY

Stanley Gibbons - Stamp Reference N18f  
1½d. 'Bright Chestnut' Shade  
Printer's Plate 29, Sheet Control Q21n Perforate  
VARIETY 'PENC' for 'PENCE' - R15/12

€600

Hendon Certificate 16358 4/1/2017  
Paid £175 'Embassy Stamps' 12/3/2019



Certificate No: 16358

THE HENDON STAMP COMPANY

TREVOR I. HARRIS, A.I.E.P.

P. O. BOX 624, LONDON NW4 3NJ TEL: 020 8209 1464

E-mail: mail@hendonstamps.com

EXPERTISATION DEPT.

Date .... 4. JAN. 2017..

We are of the opinion that -

Great Britain SG N18(4) +  
1½d Bright Chestnut, 1912-1924, Strip  
of Three, Centre stamp PENC error, Plate 29,  
unused, is genuine.



No OVERPRINT  
GB stamp seen  
separate GB

Signed T. Harris

Member: The International Association of Expert Philatelists

5 LINE NARROW SETTING BLACK INK OVERPRINT - ISSUED 17 FEBRUARY 1922



Ref. T15 - 1½d. Red-brown, Overprinted by Thom  
Minor stamp shade variations  
(umm)

€2.50 each



Ref. T15 - 1½d. Red-brown, Overprinted by Thom  
Minor stamp shade variations  
(vfu)

€1 each



Ref. T15DB - 1½d. Red-brown, Overprinted by Thom  
Overprint Dull Black  
(vfu)

€50



5 LINE NARROW SETTING BLACK INK OVERPRINT - ISSUED 17 FEBRUARY 1922



Ref. T15 - 1½d. Red-brown, Overprinted by Thom  
Positional Block from R19 & R20, Stamps 11 & 12  
(umm)

€12



Light Overprint  
Impression

Medium Overprint  
Impression

Heavy Overprint  
Impression

Ref. T15 - 1½d. Red-brown, Overprinted by Thom  
Positional Block from R1, R2, R3, Stamps 10, 11 & 12  
'POSTAGE' & '2' of 'B2' Watermark in right margin  
(umm)

€30

5 LINE NARROW SETTING BLACK INK OVERPRINT - ISSUED 17 FEBRUARY 1922



Ref. T15/GP - 1½d. Red-brown, Overprinted by Thom  
Gutter Pair  
(umm)

€35



5 LINE NARROW SETTING BLACK INK OVERPRINT - ISSUED 17 FEBRUARY 1922

OUT OF ALIGNMENT PAIRS (OAP)



Ref. T15/OAP x 2 - 1½d. Red-brown  
Overprinted by Thom  
Adjacent overprint stereotypes out of line  
(umm) €20



Ref. T15/OAP x 2 - 1½d. Red-brown  
Overprinted by Thom  
Adjacent overprint stereotypes out of line  
(umm) €20



Ref. T15/OAP - 1½d. Red-brown  
Overprinted by Thom  
Lower right pair overprints out of alignment  
(vfu) €20



STAMP VARIETY



**T15 x 8 & T15ba Block (umm)**

Printers Plate 29 Control Q21 (narrow) Perforate

Overprint Setting 2

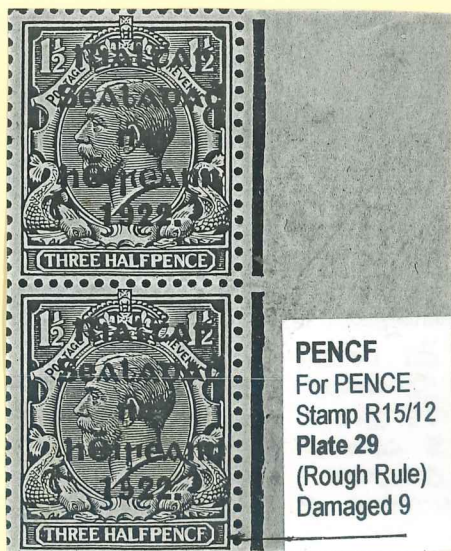
**Variety**

T15ba - 'PENC' error R15/12

Jubilee line adjacent to R15/12 roughened

Setting characteristic - damaged '9' in '1922'

€650



**PENC**  
For PENCE  
Stamp R15/12  
Plate 29  
(Rough Rule)  
Damaged 9



€600

**T15 & T15ba (umm)**

Printers Plate 29 Control Q21 (narrow) Perforate

Overprint Setting 2

**Variety**

T15ba - 'PENC' error R15/12

Jubilee line adjacent to R15/12 roughened

Setting characteristic - damaged '9' in '1922'



STAMP VARIETY



**T15ba (vfu)**

Printers Plate 29 Control Q21 (narrow) Perforate

Overprint Setting 2

**Variety**

T15ba - 'PENCf' error R15/12

Setting characteristic - damaged '9' in '1922'

€525



**T15 & T15ba (vfu)**

Printers Plate 29 Control Q21 (narrow) Perforate

Overprint Setting 2

**Variety**

T15ba - 'PENCf' error R15/12

Setting characteristic - damaged '9' in '1922'

€530



STAMP VARIETY



T15 bb

T15 Block from R12 to R20, Stamps 9 to 12  
Printers Plate 12b , Overprint Setting 1b  
Sheet Control Q21w Imperforate  
**Variety**  
T15bb'PENCF' corrected R15/12



**FEBRUARY 1922 - PROVISIONAL GOVERNMENT OVERPRINT**  
**'PENCF' corrected error from Printer's Plate 12b (Official Plate 585/14)**  
**Alexander Thom 5 Line Overprint from Setting 1b**

Continuation from Page 6A



**PRINTERS PLATE 12b**

- Printers mark (dot) in jubilee line below stamp R20/9.
- Jubilee line adjacent to stamp R15/12 narrow and smooth.
- Corrected 'F' in 'PENCF', stamp R15/12 - variety reference T15bb.
- Sheet control Q21 (wide setting) Imperforate



**OVERPRINT CHARACTERISTICS**  
**SETTING 1b**

- Stereo 12 x 10 cliché setting
- R19/12 Slightly dropped 'c' in 'Sealadac'.

**BACKGROUND**

Block purchased by Barry Cousins 23 June 2020 from Heinrich Kohler - Auction 373 Lot 713. Hammer Price €180, landed price €252.

Block as displayed omitted 2 top rows, block showing R14 to R20, stamps 9 to 12.

On inspecting two further rows (R12 & R13) were uncovered, but folded back.

Block less rows R12 & R13 was featured in book written by Cyril Dulin titled 'Ireland The Overprints 1922-1935'.

It is assumed therefore that Dulin was at some stage the owner of this block



STAMP VARIETY



Basic Stamp T15 (vfu)

Printers Plate 12b

Control Q 21 with wide setting in use after 'F' corrected to 'E' by the Mint  
Overprint Setting 1b ( Note no damage to '9' of '1922')

VARIETY

T15bb - 'PENCF' corrected error R15/12

€750





OVERPRINT VARIETIES



**T15d (fm)**  
Stamp from Row 1  
'1922' date line omitted

€180



**T15e (umm)**  
Overprint lines transposed  
'1922' at top

€120



**T15e (fm)**  
Overprint lines transposed  
'1922' at top

€90

OVERPRINT VARIETIES



T15f x 4 (umm)

Overprints display major right shift  
Part two overprints on each stamp

€300



T15f x 4 (umm)

Overprint displays major right shift  
Part two overprints on stamp

€90



OVERPRINT VARIETIES



T15 (fm)  
Variety  
V4a - 'r' over 's'



T15 (umm, rust spot)  
Variety  
V4a - 'r' over 's'



T15 (m)  
Variety  
V4b - 'r' over 'Se'



T15 (fm)  
Variety  
V4d - 'r' over 'Se' &  
wide 'ac' in 'Sealadac'



T15 (fm)  
Variety  
V4g - 'r' over 'Se' &  
'é' over '19'

€3 x 5



T15 (R17/4 umm, R17/5 fm, R17/6 umm)  
Overprint Setting 2a  
Varieties

V4b - 'r/Se(3)' from R17/4

V4a - 'r/S' from R17/5 & R17/6

€20



T15 fm

Varieties

V4b - 'r/Se(2)' Stamp on left

V4b - 'r/Se(3)' Stamp on right

€6



T15 (vfu)  
Variety  
V4b - 'r/Se(3)'

€4



T15 (vfu)  
Variety  
V4b - 'r/Se(2)'

€4

'r' over 'Se' (3) classified by many as 'r' over 's', refer Barry Cousins Compendium - Overprinted Stamps of Ireland 1922 -1935 Appendix 7.



T15 (fm)  
Variety

V4i - Part '1922' at top & at foot

€5



T15 (fm)  
Variety

V4i - Part '1922' at top & at foot

€5



T15 (m)  
Variety

V4i - Part '1922' at top & at foot

€5

OVERPRINT VARIETIES & FLAWS



T15DB (vfu)  
Dull Black Ink Overprint  
**Variety**  
V4a - 'R/S'

€180



T15DB (vfu)  
Dull Black Ink Overprint  
**Varieties**  
V4j - 'c' for 'e' in 'Sealadóir'  
UF4g - 'l' in 'Rialtaí' broken &  
'l' in 'Sealadóir' deformed

€180



T15DB (vfu)  
Dull Black Ink Overprint  
**Flaw**  
F4e - First 'A' of 'Sealadóir' damaged & full of ink

€110



OVERPRINT FLAWS



T15 (umm)

Variety

T15 / F4e - First 'a' of 'Sealadac' damaged & full of ink

Marginal Stamp

€13



T15 (fm)

Variety

T15 / F4l - 'm' for 'n' in 'hÉireann'

€5

UNLISTED OVERPRINT FLAWS



T15 (fm)

Variety

T15 / UF4g - Overprint major downward shift

€4

ALEX. THOM & CO. LTD. OVERPRINT ISSUE 4T STAMP 2d. Die 1 - REFERENCE T16

BLACK INK OVERPRINT



€3.50 T16 (umm)



T16 (umm) €3.50



€8 T16 (pair umm)



T16 (Block umm)

€15



2 x T16 (fm) €1.50 ea.



4 x T16 (fu) €2 ea.

GUTTER PAIR



T16 / GP (fm)

Marginal example R10/1 & R11/1

€48



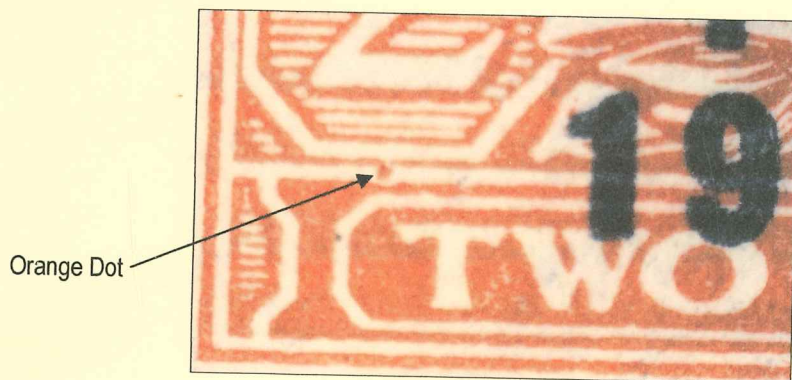
ALEX. THOM & CO. LTD. OVERPRINT ISSUE 4T STAMP 2d. Die 1 - REFERENCE T16

UNLISTED STAMP VARIETY



T16v (vfm)  
Unlisted Variety  
Dot in frame to left of 'T' of 'TWO'

€50



Basic Stanley Gibbons Stamp Reference  
SG366 (N19)

UNLISTED WATERMARK VARIETY



T16wc / T16ae (vfu)

Unlisted Variety

Inverted & Reversed Watermark

£1,000+  
RRR



T16wc / T16ae

Watermark Inverted & Reversed

From: [Roy Hamilton-Bowen](#)

Sent: Monday, August 31, 2020 10:20 PM

To: [Barry Cousins](#)

Hi

If this is Die I, then it would be T16wc. Nice find!  
Cheers

On 28.08.2020 04:23, Barry Cousins wrote:

Hello Roy

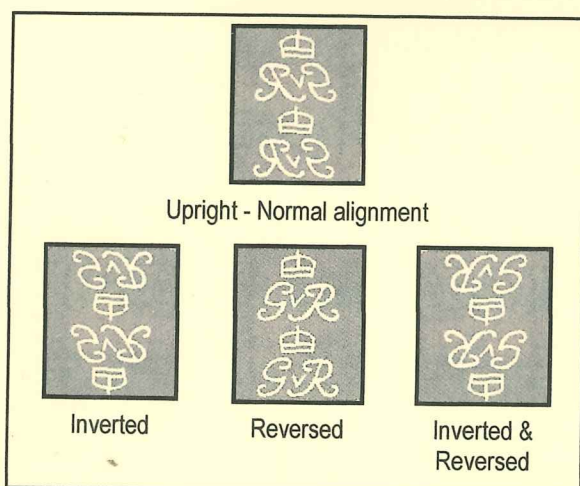
Just tidying up my Thom black overprint files and just noted that I have a used 2d Die 1 overprinted stamp with an inverted & reversed overprint (see attached scan).

For the 2d Die 2 you list as T17wc.

Any thoughts, your view will be much appreciated

Kind regards

Barry Cousins



Royal Cypher Watermark, as viewed from the back of the stamp

2d. Die 1 - Basic Stamp Reference SG366 (N19) from Stanley Gibbons

Example shown is presently unlisted. Overprint References are therefore notional, but derived from the 2020 Hibernian Catalogue & Compendium by Barry Cousins



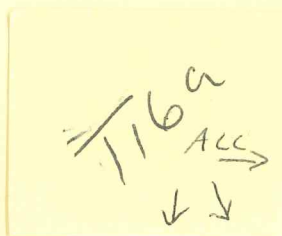
INVERTED OVERPRINT VARIETY



**Variety**

T16b - Inverted overprint (fm)  
From one of three known sheets  
with a well centred overprint

€300



**Variety**

T16b - Inverted overprint (fm)  
From one of three known sheets  
with a well centred overprint

€300



**Variety**

T16b/UF4g - Misplaced Inverted Overprint (fm)  
From single sheet with displaced overprint

€350



**Variety**

T16b/UF4g - Misplaced Inverted Overprint (fm)  
From single sheet with displaced overprint

€350



**Variety**

T16b/UF4g - Misplaced Inverted Overprint (fm)  
From single sheet with displaced overprint

€350

OVERPRINT ERRORS

INVERTED OVERPRINT (SG 12a)

RPS CERTIFICATE 150.903

Dated 1<sup>st</sup> day of issue 17<sup>th</sup> February, 1922

Issued at

GRAND PARADE POST OFFICE, CORK

Four sheets in total of 2d Die I Inverted issued

Only one sheet known with overprint shift

From Control S22 IMPERF.



Basic Stamp 2d. Die 1(fu)

SG366 (N19)

Overprint Variety

Ref. T16b - Inverted overprint

Only one sheet recorded

with displaced overprints

RPS Certificate 150.903

17 Jan 1990

€375

No 150903

THE ROYAL PHILATELIC SOCIETY  
LONDON



41, Devonshire Place,  
London, W1N 1PE

Meeting of 17 JAN 1990

In the OPINION of The EXPERT COMMITTEE the item  
submitted as

*Ireland: 1922*

S.G. No. *12a*

*2d Orange - Die I - Thom overprint inverted -  
used - is genuine*

Observations



*Rahner*  
Chairman

Submitted by

*P. Dwyer*



Basic Stamp 2d. Die 1(fu) SG366 (N19)

Overprint Variety

Ref. T16b - Inverted overprint

Only one sheet recorded with displaced overprints

€375



T16 ba  
SG12a Die 1



SCAN  
ONLY

U/M, Pristine, fresh. £110  
613 (E39198) Ireland 1922 2d SG 12a **VARIETY, 'OVERPRINT  
INVERTED' VFU, (USED ON FIRST DAY OF ISSUE OF  
THE IRISH REPUBLIC 'CORK.17.FE.1922')** A  
remarkable combination (one of only 4 known) With  
cert £575



*Embassy Philatelists*

Specialists in Stamps of Great Britain

P.O. Box 161, Chichester, West Sussex PO19 3SU  
Tel: 023 9241 2512 Fax: 023 9241 2513  
Email: [info@embassystamps.co.uk](mailto:info@embassystamps.co.uk)  
web: [www.embassystamps.co.uk](http://www.embassystamps.co.uk)



OVERPRINT VARIETIES - r/s and r/se



T16/V4b  
'r/se'(3)  
Row 17/4

€10

T16/V4a (2 x fm)  
'r/s'  
Row 17/5



T16/V4b T16/V4a T16/V4a  
'r/se'(3) 'r/s' 'r/s'  
Row 17 Stamps 4 to 6 (3 x fm)

€12



T16/V4b (umm)  
'r/se'(3)

€7



T16/V4e (vfu)  
'r/se'(2) & 'é/19'  
Wide Setting of 'é' and 'eΔ' (14.5mm)

€10



T16/V4b (fu)  
'r/se'

€4



T16/V4f (fm)  
'r/se'(3) & 'é/19'

Width of 'héineann' 13.7mm

3 x €5



T16/V4f (vfu)  
'r/se'(3) & 'é/19'

Width of 'héineann' 13.7mm

'Carbury' Cancel



T16/V4f (fu)  
'r/se'(2) & 'é/19'  
Width of 'héineann' 13.7mm



T16 (umm)

Block of 12 from - Rows 16 & 17 Stamps 1 to 6  
Varieties R17/2 'r/se'(1), V4b - R17/3 'r/se'(2),  
V4b - R17/4 'r/se'(3), V4a - R17/5 & R17/6 'r/s'

(1), (2), (3) in brackets after 'r/se'  
varieties indicate degree of misalignment.  
See Author's Compendium

€115



OVERPRINT VARIETIES



€4



€6

T16/V4a (fu)  
'R' over 'S'  
Shade Variants



€6



€4



€4



T16/V4b (fu)  
'R' over 'Se'

€4



€4



€6

T16/V4f (fu)  
'R' over 'Se' & 'ei' over '19'



€6

T16/V4g (fu)  
'R' over 'e' & 'ei' over '19'



T16 Block of 8 (7x fu)  
Varieties

Bottom row from the left stamps 1, 2, 3 & 4  
V4b - 'R' over 'Se', stamps 1 & 2

V4e - 'R' over 'Se', 'ei' over '19' & wide setting of 'ei' & 'ea' in 'heireann', stamp 3  
V4f - 'R' over 'Se' & 'ei' over '19', stamp 4

€20



OVERPRINT VARIETIES



**T16 Block (2 x umm, 2 x fm)**

2d. Die 1 Black ink overprint

**Variety**

V4a - Lower stamps 'R' over 'S' R17/ 5& R17/6 (umm)

€100



**T16 (umm)**

2d. Die 1 Black ink overprint

**Varieties**

V4b - 'R' over 'Se' (3)

V4j - 'c' for 'e' in 'Sealadac'

€40



**T16DB (umm)**

2d. Die 1 Dull Black ink overprint

**Varieties**

V4b - 'R' over 'Se' (3)

V4j - 'c' for 'e' in 'Sealadac'

€180



DULL BLACK INK OVERPRINTS



T16DB (2 x umm)  
Dull Black ink overprint

€150



T16DB (fm)  
Dull Black ink overprint

€50 +



T16DB (fu)  
Dull Black ink overprint

€50 +



T16DB (fu)  
Dull Black ink overprint

€50 +

DULL BLACK INK OVERPRINT VARIETIES - 'r/s' & 'r/se'



T16DB (umm)  
Dull Black ink overprint

Variety

V4a - 'r' over 's'

€180



T16DB (fm)  
Dull Black ink overprint

Variety

V4b - 'r' over 'se' (2)

€180



T16DB (fm)  
Dull Black ink overprint

Variety

V4f - 'r' over 'se' (2) & 'ei' over '19'

€180

OVERPRINT FLAWS



T16 (fu)

Variety

F4a Short 'i' in 'Rialtaí'

Cancel KILLUCAN (County Westmeath)

6 May 1922

€8



T16 (vfu)

Variety

F4h Hyphen for dot over 'c' in 'Sealadac'

€5



T16 (4 x umm)

Variety

F4hb Break in 'c' of 'Sealadac'

(bottom left stamp)

€25



UNLISTED OVERPRINT FLAWS

€7



T16 / UF4g (umm)  
Overprint left shift

€4



T16 / UF4g (fm)  
Overprint right shift



T16 / UF4g (fu)  
Overprint left shift

€3



T16 / UF4g (fu)  
Vertical overprint shift

€3



T16 / UF4g (fu)  
Overprint left shift  
V4b - 'R/Se' (2)

€5



T16 / UF4g (fu)  
Overprint right shift  
V4b - 'R/Se' (3)

€5



T16 (fu)  
Block of six stamps  
Varieties

€20

F4i - Upper two stamps, damaged crossbar of 'e' in 'Sealadac'

F4k - Middle row right stamp, broken 'n' in 'heineann'

UF4h - Middle row right stamp, damaged 'i' of 'Rialtar'  
and stamps with broken letters, various positions



T16 / UF4h (umm)  
Stamp on left  
Broken & damaged letters

€10



T16 / UF4h (fm)  
Broken 'l' in 'Rialtar'

€3



UNLISTED OVERPRINT FLAWS



T16/ UF4h (fu)  
Dot over 'c' in 'Sealadac' damaged

€3



T16/ UF4h (fu)  
Broken 1st '2' in '1922'

€3



T16/ UF4h (fu)  
Broken 2nd 'a' in 'Sealadac'

€3



T16DB/ UF4h (fu)  
Dull black ink overprint  
Broken 1st 'a' in 'Sealadac' & 'A' in 'nA'

€150



OUT OF ALIGNMENT PAIRS



€8

T16/ OAP (fu)  
Die 1  
cbs - MARYBOROUGH  
COUNTY LEIX





€20 T17 (4x umm)



T17 (umm)

€5



€5 T17 (umm)



€40 T17 (fm) DB



T17 (4x umm)

€20



T17 (4x umm)  
Light & Heavy impressions

€20



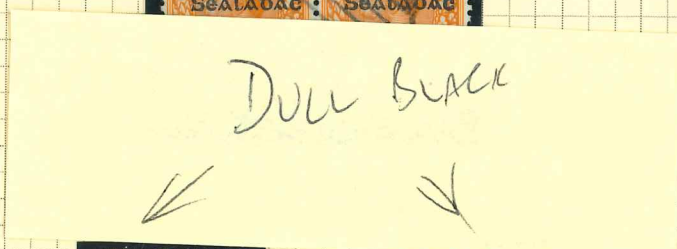
T17 (6 x u)  
Light & Heavy impressions

€15



T17 (vfu)

€2



T17 (vfu)

€2



T17 (vfu)

€2



T17DB (vfu)  
Dull Black Ink  
22 MR 22

€40



T17DB (vfu)  
Dull Black Ink  
1 MY 22

€40



T17 (vfu)

€2



T17 (vfu)

€2



T17 (vfu)

€2



T17 (vfu)

€2



T17 (vfu)

€2



OVERPRINT ERRORS



Basic Stamp 2d. Die 2 - Stanley Gibbons Reference SG370 (N20)

**Variety**

**Reference T17b (m)**

Overprint inverted with major shift left

€400



Basic Stamp 2d. Die 2 - Stanley Gibbons Reference SG370 (N20)

**Variety**

**Reference T17c (umm)**

Date Line (1922) omitted

€180



**ALEX. THOM & CO. LTD. ISSUE 4T STAMP T17 2d. Die 2  
OVERPRINT ERROR WITH VARIETY**

Basic Stamp 2d. Die 2 Stanley Gibbons Reference SG370 (N20)

Black Ink Thom Overprint Setting 9

**Overprint Error Reference T17b (fm) - Overprint Inverted**

**Overprint Variety F4da - R11/9 Colon for 'i' in 'Rialtas'**

Scarce with combination of inverted overprint and F4da variety, which proves Setting 9 was in use with this issue.

RHB Certificate 865, 25 May 2010. Purchased Rodgau Philatelie Auction May 2010.. Price paid €790.

**ATTEST**

**ROY HAMILTON-BOWEN**

Verbandsprüfer

im Bund Philatelistischer Prüfer e. V.

D-63110 Rodgau, Eisenbahnstr. 8, Tel. 06106 3023

Nr. 865

Datum 25.05.2010

**IRELAND**

1922 Rialtas 5-line overprint by Alex thom in black on GB 1912  
2d orange Die II, with overprint inverted and with the variety  
"R:altas" in the 1<sup>st</sup> line, unused with full original gum, hinged, is  
**genuine**

and free of faults at the time of examination.

Centring, perforations and other characteristics clearly identify  
the stamp illustrated below.

Michel 15IV/II var.★, Stanley Gibbons 13a var.★,  
Hibernian T17a-V17★.



f.d.R.

*R. Hamilton-Bowen*

Prüfgebiete: Gibraltar, Irland, Malta

Die Prüfung erfolgte auf Grund der Prüfordnung des Bundes Philatelistischer Prüfer e.V.



T17b/F4da

€1,350



FORGED OVERPRINT ERROR



T17b (umm)  
Forgery  
Overprint Inverted  
No dot over 'c' of 'Sealadac'

€50

BOGUS INVERTED OVERPRINTS.  
NO DOT OVER "C" OF SEALADAC.

2d Die II  
BOGUS Opt.  
inverted

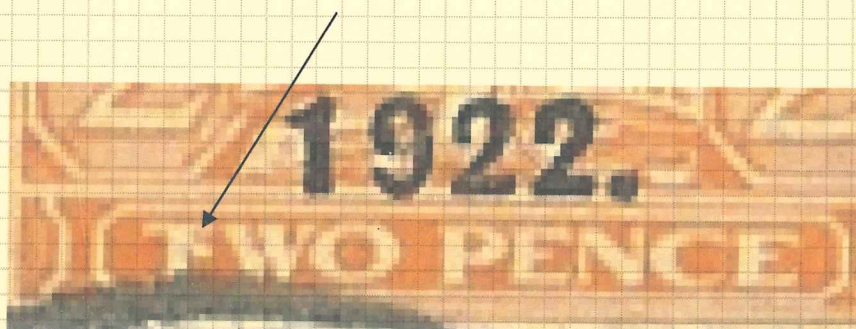


STAMP ERRORS



T17e(fu)  
"T" of "TWO" with major flaw  
to upright below crossbar  
Die 2

€60





UNLISTED OVERPRINT VARIETY - Major part of overprint missing



T17var. / T17var. (fm)  
Unlisted Overprint Variety  
Major part of overprint missing R1/7

RRR (€600++)



T17var. / T17var. (fm)  
Unlisted Overprint Variety  
Major part of overprint missing R1/7

Hi Barry

There were two of those stamps in a mixed lot I bought some years ago, they are the only examples I have seen and I think it is possible that some type of porous foreign matter got on the Plate, all I can remember at the time was why they had not been taken out as single lots as they were so striking.

Padraig O Shea

Raven Stamps

On Thu, 10 Sep 2020 at 09:13, Barry Cousins

<[bsb\\_cousins@yahoo.com](mailto:bsb_cousins@yahoo.com)> wrote:

Hello Padraig

Would appreciate your thoughts.

I refer to the lot LV063.21 - 2d Die 1, Thom Black, which is on its way to me.

Do you have any thoughts as to how part of the Thom overprint is missing from Row 1 Stamp 7.

Could it be under inking of the cliché or whatever?

Kind regards

Barry Cousins

Padraig  
No  
wrongly  
described  
should be  
2d Die 2

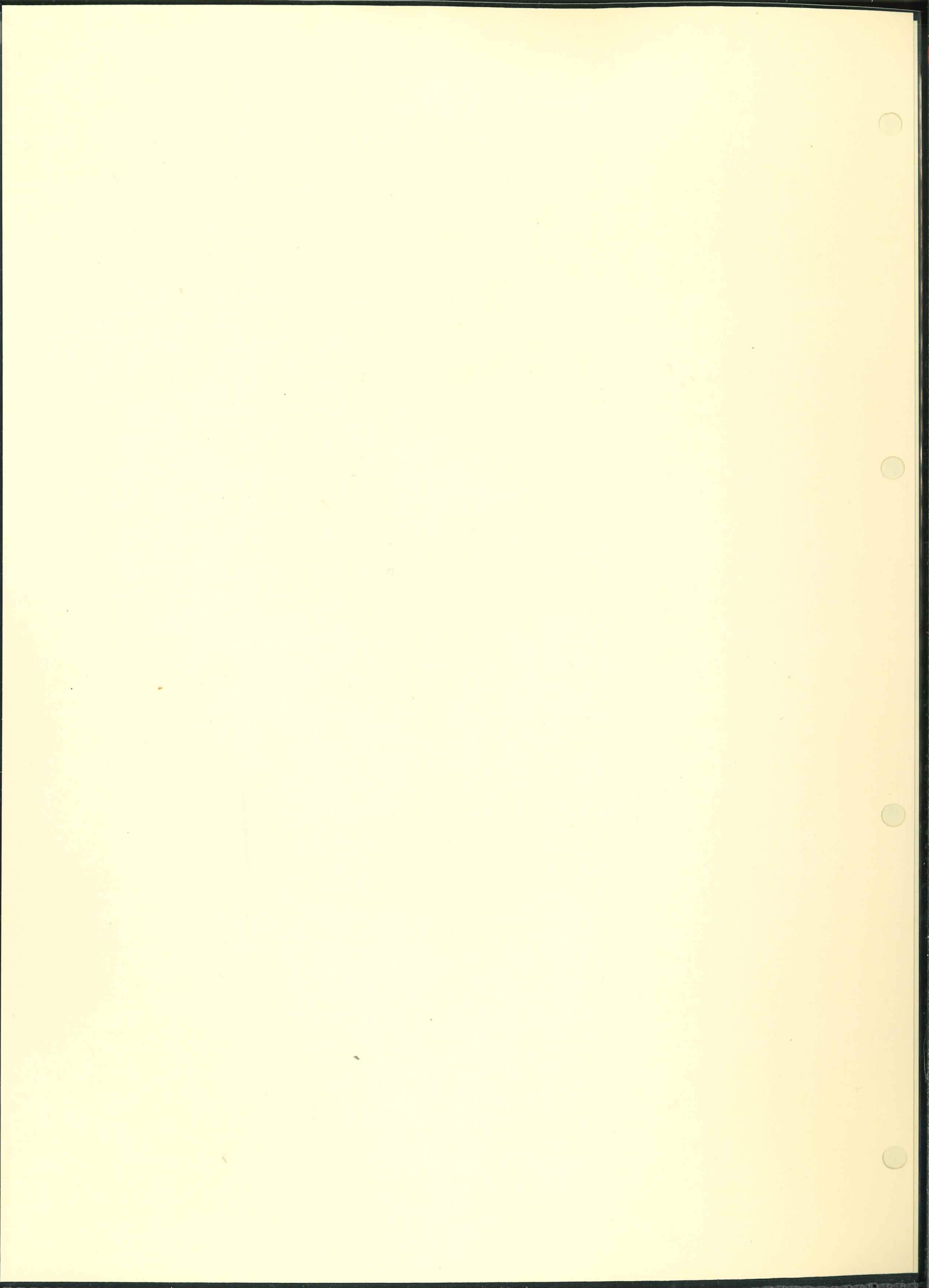
2d. Die 2 - Basic Stamp Reference SG370 (N20) from Stanley Gibbons

Two examples are recorded and presently not listed, the image above shows the second example.

This example displays more of the Thom 5 - line overprint.

Both examples ex Raven Stamps, being offered for €475 & €375 respectively)







GUTTER & OUT OF ALIGNMENT PAIRS

OAP's



T17 / OAP (umm)  
Two out of alignment pairs  
Die 2

€35



OVERPRINT VARIETIES 'R/S', 'R/Se', 'R/e'



T17 / V4a (umm)  
2d. Die 2  
'R' over 'S'

€15



T17 / V4a (vfu)  
2d. Die 2  
'R' over 'S'  
(lower stamp)

€6



T17 / V4b (umm)  
2d. Die 2  
'R' over 'Se' (3)

€10



T17 / V4a (4 x vfu)  
2d. Die 2  
'R' over 'S'

€4ea



T17 / V4b (fm)  
2d. Die 2  
'R' over 'Se' (2)

€5



T17 / V4b (vfu)  
2d. Die 2  
'R' over 'Se' (2)

€5



T17 / V4b (fm)  
2d. Die 2

Left stamp V4b 'R' over 'Se' (2)

€10 Right stamp V4b 'R' over 'Se' (3)



T17 / V4b (fu)  
2d. Die 2

Left stamp V4b 'R' over 'Se' (2)

Right stamp V4b 'R' over 'Se' (3) €10



T17 / V4e & V4j (umm)  
2d. Die 2  
V4e 'R' over 'e'

€12 V4j 'c' for 'e' in 'Sealadac'

Note Shade Variants

Overprinted Stamps Compendium by  
Barry Cousins  
describes 'R/Se' 'R/S', 'R/e' variants

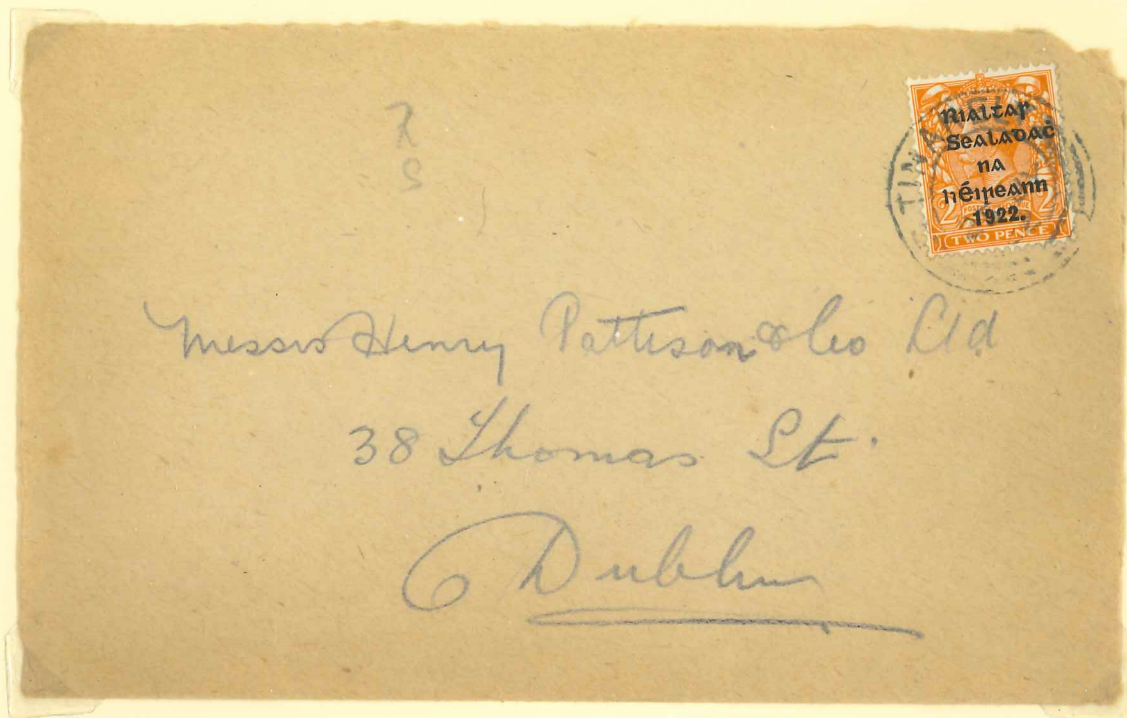


T17 / V4e & V4j (fu)  
2d. Die 2  
V4e 'R' over 'e'

V4j 'c' for 'e' in 'Sealadac' €6



OVERPRINT VARIETY 'R/S'



T17 / V4a (vfu on cover)  
2d. Die 2  
'R' over 'S'

Cancel 25 JY 1922 TINAHLY Co. WICKLOW

€10

Overprinted Stamps Compendium by  
Barry Cousins  
describes 'R/Se' 'R/S', 'R/e' variants

OVERPRINT FLAWS



T17 / F4a (umm)  
Centre Stamp Short 'i' of 'Rialtas'

E25



T17 / F4a (vfw)

E8



T17 / F4c (fm)  
R.H Stamp Broken 's' of 'Rialtas'

E10



T17 / F4j (fu)  
'c' for 'e' in 'heireann'

E6



UNLISTED OVERPRINT FLAWS



T17 / UF4a (u)  
Closed 'c' of 'Sealadac'

€14



T17 / UF4h (fu)  
Broken 1st 'n' in 'hÉireann'

€3



UNLISTED OVERPRINT FLAWS



€40

T17 / UF4g (4x umm)  
Overprint downward shift



€5

T17 / UF4g (fu)  
Overprint right shift



€10

T17 / UF4h (umm)  
Faint '9' of '1922'



UNLISTED OVERPRINT FLAWS



T17 / UF4g (umm)

Positional block x 15 stamps R1 to R5, Stamps 10, 11 & 12  
Major overprint shift to right', part two overprints on a stamp x 12  
Dandy Roll 'POSTAGE' watermark misplaced

e210





T18 (umm)  
Reddish Purple

€28



T18 (fm)  
Reddish Purple

€12



T18 (fm)  
Reddish Purple

€12



T18 (fm)  
Reddish Purple

€12



T18 (4x umm)  
Deep Reddish Purple

€150



T18 (vfu)  
Deep Reddish Purple

€15



T18 (4x vfu)  
Reddish purple  
ods CORK 23 JA. 23

€45



T18/Telegraph/Wexford © 1922 Thom *Rialtas* 5-line overprint in black on 6d. purple, two singles used on fragment of bilingual Telegram Form clearly tied by **BRIDGETOWN WEXFORD** €25-



€45

MacDonnell Whyte Ltd., 102 Leinster Road, Dublin 6, Ireland. Phone 4977449 Fax 4977440



GUTTER & OUT OF ALIGNMENT PAIRS



T18 / GP (fm)  
Positional gutter pair from R10/1 & R11/1

€120



T18 / OAP (umm)  
Block of four  
Two out of alignment pairs

€200



OVERPRINT VARIETIES



Overprint Variety Reference

T18 / V4b (fm)

'r' over 'Se'

€24



Overprint Variety Reference

T18 / V4g (fm)

'r' over 'Se' & 'ei' over '19' of '1922'

€30



Overprint Variety Reference

T18 / V4g (fm)

'r' over 'Se' & 'ei' over '19' of '1922'

€30



OVERPRINT VARIETIES



Overprint Varieties

T18 / V4a & V4b

V4a - 'R' over 'S' - two stamps on right

V4b - 'R' over 'Se' - second & third stamps

(umm & fm - toning)

€200



UNLISTED OVERPRINT FLAWS



T18 / UF4a (fm)  
'l' of 'Rialtas' almost missing

€24



T18 / UF4h (m)  
Flat top to 'c' in 'Sealadac'

€10





T19 (umm)

€38



T19 (fm)

€19



T19 (fm)

€19



T19 (umm)

€38



T19 (4x umm)

€150

Shades



T19 (vfu)

€13



T19 (vfu)

€13



STAMP ERROR



**1/- Basic Stamp Reference**  
Stanley Gibbons SG 395 (N32)  
**Overprint Stamp Variety**  
**T19a (fm)**  
"ONF" for "ONE"  
David Feldman  
certificate 377  
27 July 1970



€525



STAMP ERROR



**1/- Basic Stamp Reference**  
Stanley Gibbons SG395 (N32)  
**Overprint Stamp Variety**  
**T19a (fu)**  
"ONF" for "ONE"  
Light triangular cancel

€300





OVERPRINT VARIETIES



T19 (umm)  
Variety

T19/V4a '-r' over 'S'



T19 (fm)  
Variety

T19/V4a '-r' over 'S'



T19 (fm)  
Variety

T19/V4a '-r' over 'S'



T19 (fm)  
Variety

T19/V4b '-r' over 'Se'(3)

Shade Variants

E60

E60

E40



T19 (6x umm)

Overprint Setting 2

Rows 12 & 13, Stamps 4, 5, 6

Variety

T19/V4e '-r' over 'Se'(3), 'Éi/19, and wide 'Éi' & 'eA' R12/4

T19/V4f '-r' over 'Se'(3) & 'Éi/19 R12/5 & R12/6

E450  
++



T19 (vfu)  
Variety

T19/V4a '-r' over 'S'

E36



T19 (vfu)  
Variety

T19/V4b '-r' over 'Se' (3)

E25



OVERPRINT FLAWS



T19 (umm)  
Variety  
T19 / F4k - Broken 'i' in 'héireann'

E150

UNLISTED OVERPRINT FLAWS



T19 (umm)  
Variety  
T19 / UF4c - Boomerang ink flaw to right of 'héireann'

E76



T19 (umm)  
Variety  
T19 / UF4g - Overprint downward shift

E76



T19 (fm)  
Variety  
T19 / UF4h - Break in 'R' in 'Rialta'

E30



# ISSUE 4T THOM OVERPRINT VARIETY STUDY BY WILLIAM FLETCHER

Settings 2 & 3 R17/5, R17/6 Variety Ref. V4a  
R over S



T15/ V4a (fm)



T16/ V4a (fu)  
Die 1

E80



T17/ V4a (fm)  
Die 2



T17/ V4a (fu)  
Die 2



T17/ V4a (fu)  
Die 2



T19/ V4a (fm)

Settings 2 & 3 R17/4 Variety Ref. V4b  
R/Se (3)

E60



T15/ V4b (fm)  
UF4h



T17/ V4b (fm)  
Die 2  
UF4h



T18/ V4b (fm)



T19/ V4b (fu)  
UF4h

UF4h - damaged first 'a' in 'Sealadac'



Setting 2 R12/4 Variety Ref. V4f  
R /Se (3) + ei/19 (1)



E20

T17/ V4f (fm)  
Die 2

Setting 2 R12/4 Variety Ref. V4e  
R /Se (3) + ei/19 (1) + wide 'ei' & 'ea'



T19/ V4e (fu)

← E60 →

Setting 2 R12/4 Variety Ref. V4e  
R /Se (2) + ei/19 (1) + wide 'ei' & 'ea'



T15/ V4e (fm)

Setting 3 R17/4 Variety Ref. V4d  
R /Se (2) + wide 'ac' in 'Sealadac'



T16/ V4d (fu)  
Die 1

Variety study by the renowned philatelist William Fletcher. Acquired by BC at Grosvenor Auctions. Do not break up. Pages 44 & 45 refer.

TOTAL CAT.  
£200

Settings 2, 3, 5, 7/8 Variety Ref. V4b  
R /Se (2)

↑  
E12



T17/ V4b (fu)  
Die 2

Page 55 56 Not 44 45