





GOVERNMENT PRINTING WORKS, DUBLIN CASTLE.  
ISSUE 14T STAMP REF. T75 2/6



€120

T75 (umm)



€60

T75 (fm)



€70

T75 (fu)



€80

T75 (vfú)



€80

T75 (vfú)



€80

T75 (vfú)

SAORSTÁT  
ÉIREANN  
1922

Overprinted Harrison  
or Government printing  
14T  
Waterlow Re-engraved issue.



GOVERNMENT PRINTING WORKS, DUBLIN CASTLE.  
ISSUE 14T STAMP REF. T75 2/6

OVERPRINT VARIETIES



T75 / V14a (fm)

Faint almost missing impression of accent over 'a' of 'SAORSTAC'

€120



T75 / V14d (umm)  
Flat tailed '9' of '1922'  
Stamp from R8/1

€180



GOVERNMENT PRINTING WORKS, DUBLIN CASTLE  
ISSUE 14T STAMP T75 - 2/6 VALUE

UNLISTED OVERPRINT FLAWS



T75 (4 x umm)

Positional corner block stamps R9/1, R9/2 and R10/1, R10/2

Varieties

UF14c Dot for flat accent over 'A' R9/2

UF14d Defective or deformed letters stamps R9/1 and R10/2

Block ex collection Patrick Williams

€650





GOVERNMENT PRINTING WORKS, DUBLIN CASTLE  
ISSUE 14T STAMP REF. T75 2/6

UNLISTED OVERPRINT FLAWS



€180

T75 (umm)  
Variety

T75 / UF14a Most of 'at' in 'SAORSTAD' missing



€400

T75 (umm)  
Variety

T75 / UF14b Worn flat accent over 'a', due to wear of cliché R9/2



€280

T75 (vfu)  
Variety

T75 / UF14b Worn flat accent over 'a', due to wear of cliché R9/2



€150

T75 (umm)  
Variety

T75 / UF14d Broken first 's' in 'SAORSTAD'



**(G) IRISH FREE STATE OVERPRINT BY HARRISON & SONS  
AND SOMERSET HOUSE**



**T76 (SG100)**

€375

**STAMP CHARACTERISTICS**

This issue adopted the use of re-engraved stamps printed by Waterlow & Sons, using printer's plates 38550 'A' & 'B'.

The distinguishing feature of this issue is the background behind the King's portrait. With the Waterlow plates the lines behind the portrait consist of cross-hashed horizontal and diagonal lines, whereas the Bradbury printings consist only of horizontal lines.



**OVERPRINT CHARACTERISTICS**

Overprint dimensions

Height of overprint 8.50mm

Overprint with Black Ink



15.00mm

12.50mm

6.00mm

**OVERPRINT VARIETIES**

Both Harrison and Somerset House used the same full pane setting made up of 40 clichés, as in use with the previous issue.

| Reference | Overprint Variety Description  |
|-----------|--|
| G1        | Flat accent over 'A' of 'SAORSTÁT' Stamp from R9/2                       |
| G2        | Worn faint, almost missing accent over 'A' of 'SAORSTÁT' Stamp from R9/2 |
| G3        | Flat tailed '9' in '1922' Stamp from R3/4                                |
| G4        | Part of 'ÁC' in 'SAORSTÁT' missing                                       |

For this issue it is common to find a range of accent and damaged letter variants.



€260

G3



G1

€500



G4

€260



GOVERNMENT PRINTING WORKS, DUBLIN CASTLE.  
ISSUE 14T STAMP REF. T76 10/-



T76 (umm)  
Note dividing cross  
top right corner

€375



T76 (fm)

€175



T76 (vfu)

€175

Date Stamp  
'College Green'



T76 Pair R4/2 & R5/2 (vfu)

Lower stamp from R5/2 displays dividing 'cross' which is set within the centre of the printed pane, with stamps from B & W plate 38550 A' pane.

€350



T76 (fu)

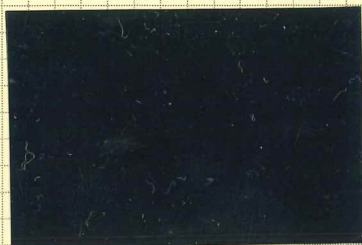
€175

cds BAILE UI BHFIACHAIN ( Co Mhaigh E O Mayo)  
28 DE 36



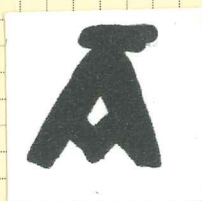


OVERPRINT ERRORS



€500

T76a (fm)  
Flat accent over 'A' of 'SAORSTAT'  
Stamp from R9/2



€450

T76a (vfu)  
Flat accent over 'A' of 'SAORSTAT'  
Stamp from R9/2



€450

T76a (vfu)  
R9/2 Flat accent over 'A' of 'SAORSTAT'  
Stamp from R9/2



UNLISTED OVERPRINT FLAWS

Original  
on display  
frame

T76 / UF14a (fvu)

Variety

'at' of 'Saorstat' part missing



T76 / UF14d (vfu)

Variety

Several letters of the overprint blotted, due to over inking and / or setting wear.

€220



T76 / UF14d (vfu)

Variety

Curve of 't' in 'Saorstat' joined to crossbar  
cds BEAL BLIRG

€220



OVERPRINT ERRORS



T77a (fm)  
R9/2-Flat accent over "a"  
of "Saorstat"  
MacDonnell Whyte  
Certificate 2006

€1,300



14TT77B1

| Reference | Cat. € |
|-----------|--------|
| T77a fm   | 1300   |