

SOUTH AFRICA

1926

PRETORIA PRINTING



Perf. 14



Frame broken under 'A'



Frame broken under 'A'



"PEERLESS" SERIES

PRINTED AND MADE IN ENGLAND.

SOUTH AFRICA

1926
PRETORIA PRINTING



"PEERLESS" SERIES

PRINTED AND MADE IN ENGLAND

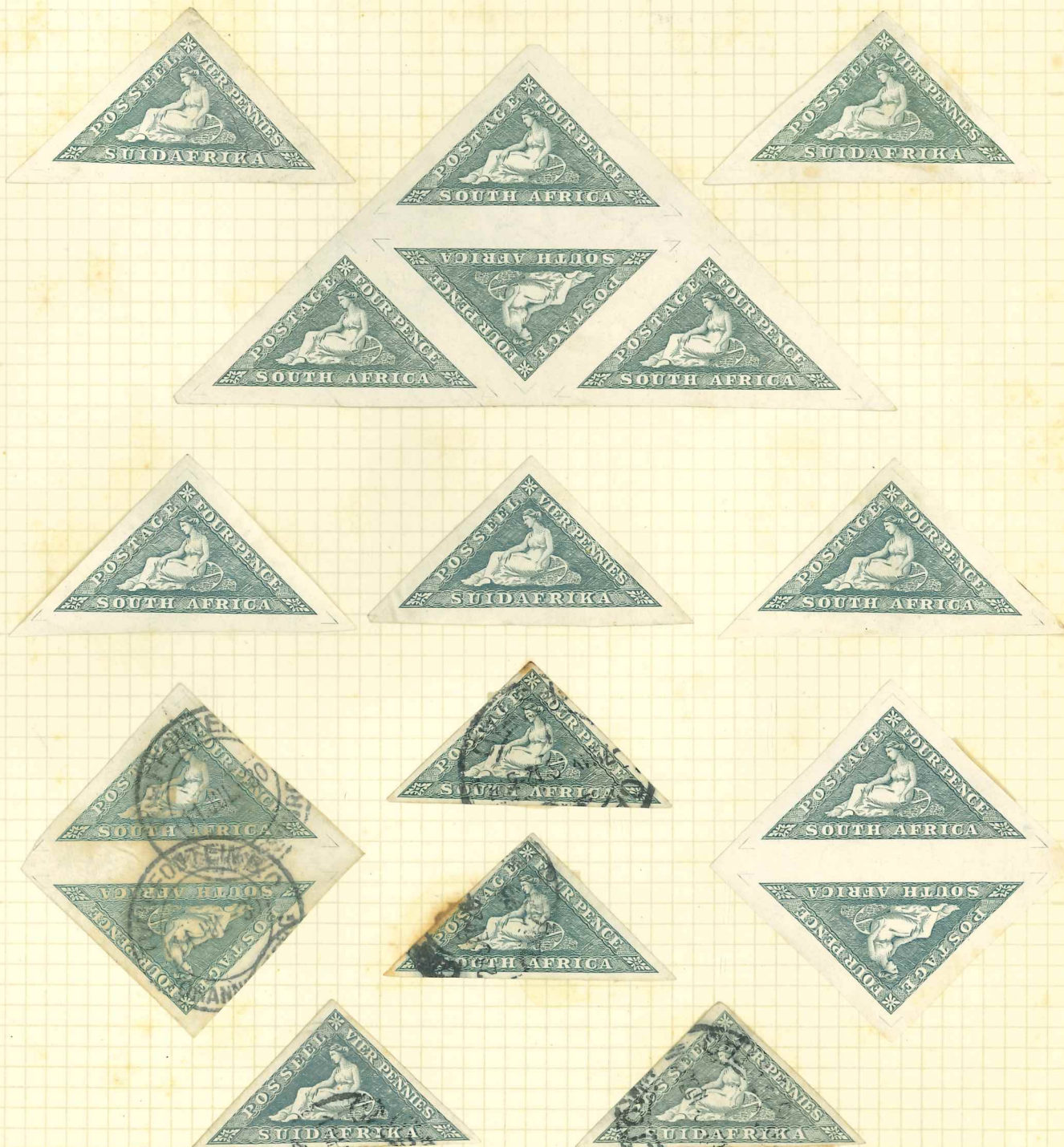
SOUTH AFRICA

1926

Recess-printed by Messrs Bradbury Wilkins & Co.
Printed in sheets of 120 stamps either wholly in English or Afrikaans

Wmk. As before.

Imperf.



"PEERLESS" SERIES

PRINTED AND MADE IN ENGLAND.

SOUTH AFRICA

1927-1928

Recess-printed by Messrs. Bradbury Wilkinson & Co. Ltd.

Wmk. Mult. Springboks' head.

A/Early printings Perf.14.

B/ From 1930 onwards Perf. 14 x 13 1/2



A



B



BRADBURY, WILKINSON & CO. LTD. ENGINEERS, NEW MALDEN, SURREY, ENGLAND.

A



A



A



B



A



B



A

"PEERLESS" SERIES

PRINTED AND MADE IN ENGLAND.

SOUTH AFRICA

1927-1928



B



A



B



B



B



B



B/ Inv. Wmk.



B



B



B



A



A



B



A



B



SOUTH AFRICA

1927-1928



B



A



B



A



A



B



A



B



A



A



B

"PEERLESS" SERIES

PRINTED AND MADE IN ENGLAND

SOUTH AFRICA

1930-1945

All the following issues except were stated are printed by Rotogravure by the Government Printer, Pretoria,

UNHYPHENATED SERIES
Suidafrika one word
Wmk. Mult. Springboks Head, Normal or Inverted,
Perf. 14 3/4 x 14 1/4



Retouch.
Cobweb variety

Inv. Inv Wmk

Inv. Inv Wmk



Die II

Die II Inv. Wmk.

Inv. Wmk

Inv.



Die II

Die II

Die II

Die II



Inv. Wmk

Inv. Wmk

1d. VALUE. Spacing of the horizontal lines in the side panel, TYPE I. Close spacing.
TYPE II. Wide spacing.

"FEELLESS" SERIES

PRINTED AND MADE IN ENGLAND.

SOUTH AFRICA

1930 - 1945



"PEERLESS" SERIES

PRINTED AND MADE IN ENGLAND

SOUTH AFRICA

1930-1945



Line left of lower.



Norm.

3d. Value. Wmks Inverted except where stated,

X Window
flaw

"PEERLESS" SERIES

PRINTED AND MADE IN ENGLAND

SOUTH AFRICA

1930-1945



Inv. Wmk.
Shuttered window.



Inv. Wmk.



Inv. Wmk.



Inv. Wmk.



Inv. Wmk.



Inv. Wmk.



Inv. Wmk.

"PEERLESS" SERIES

PRINTED AND MADE IN ENGLAND

SOUTH AFRICA

1930-1945



Inv. Wmk



Inv. Wmk.



Inv. Wmk.



Inv. Wmk.



Inv. Wmk.



Redrawn.



Redrawn.



Redrawn



Redrawn.

"PEERLESS" SERIES

PRINTED AND MADE IN ENGLAND

SOUTH AFRICA

1930-1945



Normal.



Normal Wmk.



Normal.

All watermarks INVERTED except where stated.

"PEERLESS" SERIES

PRINTED AND MADE IN ENGLAND.

SOUTH AFRICA

1930 - 1945



Inv. Wmk.



Inv. Wmk.



Inv. Wmk.



Inv. Wmk.

All watermarks NORMAL except where stated.

"PEERLESS" SERIES

PRINTED AND MADE IN ENGLAND

SOUTH AFRICA

1930-1945



Spots in and around the value circle.



All watermarks NORMAL except where stated.

"PEERLESS" SERIES

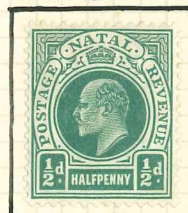
PRINTED AND MADE IN ENGLAND

THE UNION OF SOUTH AFRICA WAS FORMED
ON THE 31ST.MAY 1910, BY THE FEDERATION OF
THE FORMER COLONIES OF THE CAPE OF GOOD
HOPE, NATAL, THE ORANGE FREE STATE AND
THE TRANSVAAL.

CAPE OF GOOD HOPE



NATAL



UNION
OF

SOUTH



AFRICA



ORANGE FREE STATE



TRANSVAAL

SOUTH AFRICA

4th. NOVEMBER 1910

THE FIRST STAMP OF THE UNION OF SOUTH AFRICA
WAS ISSUED TO COMMEMORATE THE INAUGURATION OF THE OPENING OF THE FIRST
UNION PARLIAMENT BY H.R.H THE DUKE OF CONNAUGHT ON THE ABOVE DATE.

Printed by Messrs. De La Rue & Co. Ltd., London.

Wmk. Multiple Rosettes.

Perf. 14.



Deep blue



Blue

The deep blue shade is generally accompanied by a
blueing of the paper.



"PEERLESS" SERIES

PRINTED AND MADE IN ENGLAND

SOUTH AFRICA

4th. NOVEMBER 1910



"PEERLESS" SERIES

PRINTED AND MADE IN ENGLAND

SOUTH AFRICA

INTERPROVINCIALS

THE STAMPS OF CAPE OF GOOD HOPE, NATAL, ORANGE FREE STATE AND THE TRANSVAAL WERE OFFICIALLY USED IN THE UNION OF SOUTH AFRICA BETWEEN THE 18 AUGUST 1910 AND 1st SEPTEMBER 1913, AS A STOP-GAP, STAMPS BEARING A POSTMARK BETWEEN THESE DATES ARE KNOWN AS INTERPROVINCIALS

STAMPS OF CAPE OF GOOD HOPE USED IN CAPE PROVINCE



SOUTH AFRICA

CG.H. USED IN CAPE PROVINCE



SOUTH AFRICA

USED IN NATAL



"PEERLESS" SERIES

PRINTED AND MADE IN ENGLAND

SOUTH AFRICA

CAPE PROVINCE USED IN O.F.S.



"PEERLESS" SERIES

PRINTED AND MADE IN ENGLAND

SOUTH AFRICA

CAPE PROVINCE USED IN TRANSVAAL



"PEERLESS" SERIES

PRINTED AND MADE IN ENGLAND

SOUTH AFRICA

STAMPS OF NATAL

STAMPS MARKED "CA" ARE OF THE 1902-03 ISSUE.
(WMK. CROWN CA)

USED IN CAPE PROVINCE



CA.



SOUTH AFRICA

NATAL USED IN NATAL.



CA



CA



SOUTH AFRICA

STAMPS OF NATAL USED IN TRANSVAAL.



CA



5.



CA.



"PEERLESS" SERIES

PRINTED AND MADE IN ENGLAND.

SOUTH AFRICA

STAMPS OF ORANGE FREE STATE
USED IN CAPE PROVINCE.



SOUTH AFRICA

O.F. S. USED IN CAPE PROVINCE.



SOUTH AFRICA

O.F.S. USED IN CAPE PROVINCE.



"PEERLESS" SERIES

PRINTED AND MADE IN ENGLAND

SOUTH AFRICA

O.F.S. USED IN NATAL



x



"PEERLESS" SERIES

PRINTED AND MADE IN ENGLAND

SOUTH AFRICA

O.F.S. USED IN O.F.S.



SOUTH AFRICA

O.F.S. USED IN TRANSVAAL.



"PEERLESS" SERIES

PRINTED AND MADE IN ENGLAND

SOUTH AFRICA

TRANSVAAL USED IN CAPE PROVINCE



— CAPE TOWN —



— KING WILLIAM'S TOWN —

"PEARLESS" SERIES

PRINTED AND MADE IN ENGLAND

SOUTH AFRICA.

TRANSVAAL USED IN CAPE PROVINCE



— EAST LONDON —



— CAPE TOWN —



— WYNBERG CAPE —

"PEERLESS" SERIES

PRINTED AND MADE IN ENGLAND

SOUTH AFRICA

TRANSVAAL USED IN CAPE PROVINCE.



— PORT ELIZABETH —



— EAST LONDON —



— KIMBERLY —



— NOORDER PAARL —



— STRYDENBURG —

"PEERLESS" SERIES

PRINTED AND MADE IN ENGLAND

SOUTH AFRICA.

TRANSVAAL USED IN CAPE PROVINCE.



RIVERSDALE



SWELLENDAM

SIR LOWRY RD.



UMTATA

UPPINGTON



SUTHERLAND

OUTDSHOORN



ABERDEEN

WYNDHOEK.S.W.A.

GRAAF-REINET.

"PEERLESS" SERIES

PRINTED AND MADE IN ENGLAND

SOUTH AFRICA

TRANSCVAAL USED IN CAPE PROVINCE.



— EAST LONDON —



— KIMBERLY —



— PORT ELIZABETH —

— WYNBERG CAPE —



"PEERLESS" SERIES

PRINTED AND MADE IN ENGLAND.

SOUTH AFRICA

TRANSVAAL USED IN CAPE PROVINCE



—MOORESBERG—



—MALMESBURY—

"PEERLESS" SERIES

PRINTED AND MADE IN ENGLAND

SOUTH AFRICA

TRANSVAAL USED IN CAPE PROVINCE.



— WYNBERG CAPE —



— KIMBERLY —



— PORT ELIZABETH —



— CAPE TOWN —



— KING WILLIAM'S TOWN —



— MOORESBURG —



— EAST LONDON —



— WORCESTER —

SOUTH AFRICA

TRANSVAAL USED IN CAPE PROVINCE



WYNBERG CAPE



CAPE TOWN



HERMANUS



SOUTH AFRICA

TRANSVAAL USED IN CAPE PROVINCE



WYNBERG CAPE



"PEERLESS" SERIES

PRINTED AND MADE IN ENGLAND

SOUTH AFRICA

TRANSCAAL USED IN CAPE PROVINCE.



— PORT ELIZABETH —



"PEERLESS" SERIES

PRINTED AND MADE IN ENGLAND

SOUTH AFRICA

USED IN NATAL



"PEERLESS" SERIES

PRINTED AND MADE IN ENGLAND

SOUTH AFRICA

TRANSVAAL USED IN NATAL.



"PEERLESS" SERIES

PRINTED AND MADE IN ENGLAND

SOUTH AFRICA

USED IN O.F.S.



Stamps of Transvaal and Cape.



"PEERLESS" SERIES

PRINTED AND MADE IN ENGLAND.

SOUTH AFRICA

TRANSVAAL USED IN TRANSVAAL.
KINGS HEAD 1904-1909.



— JOHANNESBURG —



"PEERLESS" SERIES

PRINTED AND MADE IN ENGLAND.

SOUTH AFRICA

TRANSCAAL USED IN TRANSCAAL



— JOHANNESBURG —



— JOHANNESBURG —



SOUTH AFRICA

TRANSVAAL USED IN TRANSVAAL.



STAMPS USED AT THE CHIEF TELEGRAPH OFFICE, JOHANNESBURG.



SOUTH AFRICA

TRANSVAAL USED IN TRANSVAAL

KING'S HEAD 1905-1909

UNIVERSAL COLOURS.



"PEERLESS" SERIES

PRINTED AND MADE IN ENGLAND

SOUTH AFRICA

TRANSVAAL USED IN TRANSVAAL



— JOHANNESBURG —

"PEERLESS" SERIES

PRINTED AND MADE IN ENGLAND

SOUTH AFRICA

TRANSVAAL USED IN TRANSVAAL



— JOHANNESBURG —



SOUTH AFRICA

POSTAGE DUE STAMPS OF TRANSVAAL USED IN TRANSVAAL



USED IN CAPE PROVINCE



SOUTH AFRICA

POSTAGE DUE STAMPS OF TRANSVAAL
USED IN NATAL



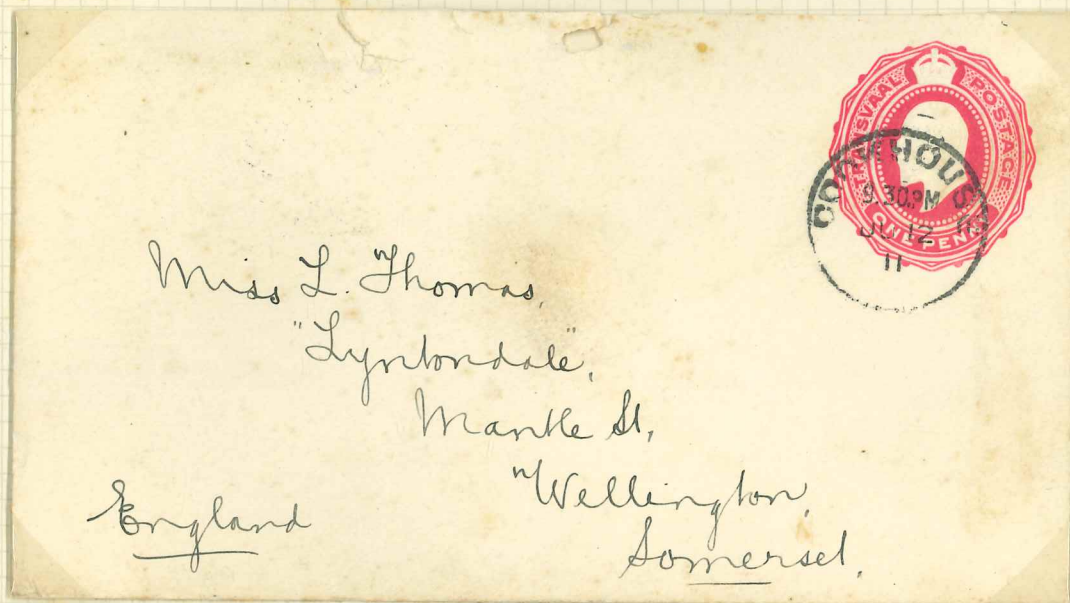
USED IN O.F.S.

"PEERLESS" SERIES

PRINTED AND MADE IN ENGLAND

SOUTH AFRICA

STAMPED ENVELOPE OF TRANSVAAL USED IN
CAPE PROVINCE.



"PEERLESS" SERIES

PRINTED AND MADE IN ENGLAND.

SOUTH AFRICA

STAMPS OF THE PROVINCE OF TRANSVAAL USED
AFTER AUGUST 1910 BUT NOT IDENTIFIED AS TO
WHICH PROVINCE THEY WERE USED IN, SINCE THE
POSTMARKS ARE EITHER 'S.AFRICA' OR BARS.



SOUTH AFRICA.

USED AFTER AUGUST 1910 BUT IDENTIFIED.



SOUTH AFRICA

STAMPS USED IN THEIR OWN PROVINCES DURING
THE PERIOD 31st. MAY TO 18th. AUGUST 1910



"FEARLESS" SERIES

PRINTED AND MADE IN ENGLAND

SOUTH AFRICA

POST-INTERPROVINCIALS

STAMPS OF THE FOUR PROVINCES USED AFTER 1st SEPT. 1913
UNTIL DEMONETIZED 31 DECEMBER 1937

TRANSVAAL



SOUTH AFRICA

SEPT. 1913- DEC. 1937.



"PEERLESS" SERIES

PRINTED AND MADE IN ENGLAND.

SOUTH AFRICA

SEPTEMBER 1913-DECEMBER 1937

CAPE OF GOOD HOPE



NATAL



ORANGE FREE STATE



SOUTH AFRICA

LETTER CARD OF NATAL USED IN TRANSVAAL.

DATED 20 NOV. 17.



"PEERLESS" SERIES

PRINTED AND MADE IN ENGLAND

SOUTH AFRICA

1st SEPTEMBER 1913.

Surface printed by Messrs. De La Rue & Co. Ltd., London.

Wmk. Single Springboks head

Perf. 14.



Inv. Wmks.



"PEERLESS" SERIES

PRINTED AND MADE IN ENGLAND

SOUTH AFRICA

1st. SEPTEMBER 1913



Inv. Wmks.



PEERLESS SERIES

PRINTED AND MADE IN ENGLAND

SOUTH AFRICA

1st. SEPTEMBER 1913



Inv. Wmk



Inv. 1 Wmk.



Inv. Wmk.



Inv. Wmk



Tête-bêche.



"FEARLESS" SERIES

PRINTED AND MADE IN ENGLAND.

SOUTH AFRICA

SEPTEMBER 1913-1921



Inv. Wmks.



"PEERLESS" SERIES

PRINTED AND MADE IN ENGLAND

SOUTH AFRICA

SEPTEMBER 1913-1921



Inv. Wmk.



AIRICA for AFRICA. Inv. Wmk.
OF for OF.



OF for OF.

SOUTH AFRICA

SEPTEMBER 1913-1921



Inv. Wmk.



Inv. Wmks.



Inv. Wmk.

Inv. Wmk.



SOUTH AFRICA

SEPTEMBER 1913-21



AIRICA for AFRICA.



"RECKLESS" SERIES

PRINTED AND MADE IN ENGLAND

SOUTH AFRICA

SEPTEMBER 1913-1921

STAMPS FROM COILS OR ROLLS.

Perf. 14 X Imperf.



SOUTH AFRICA

SEPTEMBER 1913-21

COIL STAMPS

ALL STAMPS SHOWN ON THIS PAGE SHOW 'JOIN' ON BACK i.e. PART OF SHEET OR GUTTER MARGIN WHERE STRIPS ARE JOINED TOGETHER.



SOUTH AFRICA

OCTOBER 1922

COLOUR CHANGE

Owing to the rate on overseas letters having been raised from 2 1/2d. to 3d. in 1922, and to conform with the U.P.U. colours, the colour of the 3d. black and orange was changed to blue.

Wmk. and Perf. as before.



SOUTH AFRICA

1926

There were two printings of this issue, the first known as the London Printing, by Messrs. Waterloo & Sons, the second The Pretoria Printing, by the Government Printer, Pretoria.

MAIN DIFFERENCES

- 1/ Booklets London Perf. 15x14 Pretoria Perf. 14
- 2/ London. Marginal PERFS. Left Margin blank Right Margin Perforated Pretoria Right Margin blank Left Margin Perforated
- 3/ London prints more glossy than the Pretoria printings
- 4/ Minor varieties

Both Printings, Wmk. Mult. Springboks Head.

Perf. 14 1/2 x 14

LONDON PRINTING



Inv. Wmk.

