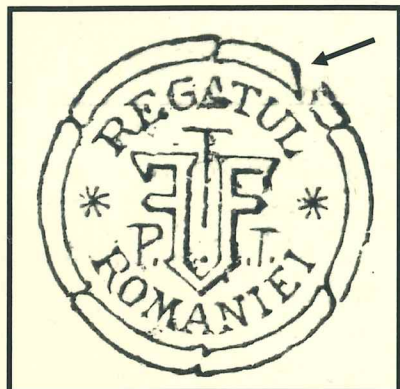


Section 1 - The Printing of the Cluj Issue

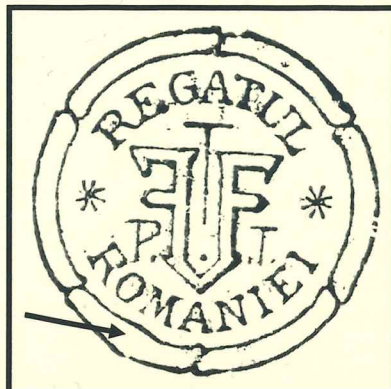
There are three varieties that can be identified by the naked eye (although a magnifying glass makes it easier) relating to the central monogram of the design and therefore they appear on every issue of Cluj and Oradea.

These three varieties are illustrated below:



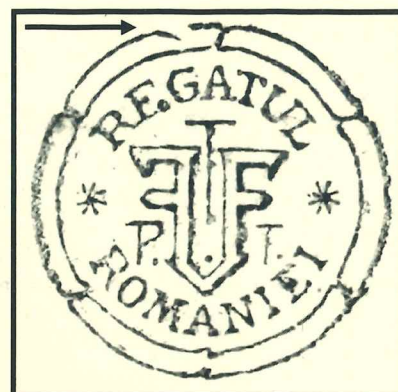
Gate Broken Frame

Break in the 1st
segment of the frame



Grotesque Frame

Bulges outward in
the 4th segment of the
frame



**Small Gate Broken
Frame**

Break in the 6th segment of
the frame

For the Cluj Issue these varieties occur in the following sheet positions on all five types of overprints.

The fact that the location does not change indicates that the printing plates were not fully taken apart to print the different types of stamps (BANI Over Monogram, BANI Under Monogram, LEU / LEI on Parliament, Flood Relief).

| | |
|---------------------------|-------|
| "Gate" Broken Frame | X, 10 |
| Grotesque Frame | V, 6 |
| "Small Gate" Broken Frame | II, 7 |



Offset Gate Broken
Frame on 15f War
Charity, position X, 10



Grotesque Frame on
Newspaper stamp. 108
stamps with this
variety, position V, 6



Small Gate Broken Frame
2f Express, Position II, 7

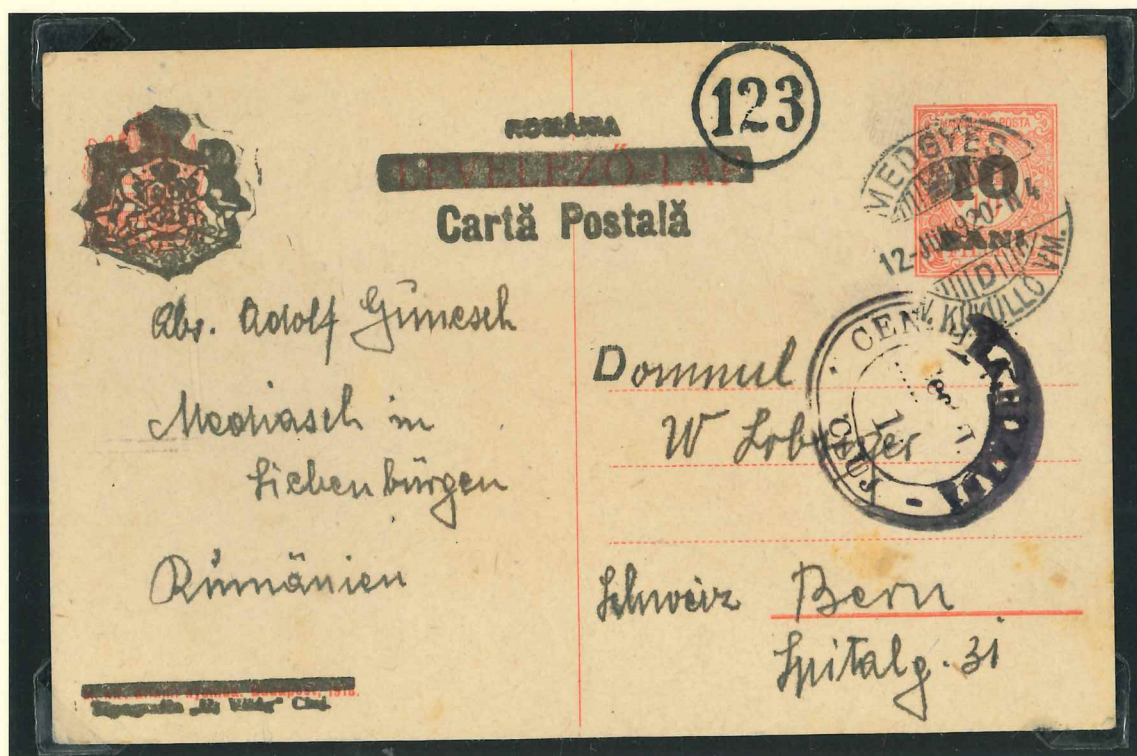
Section 2 - Postal History of the Cluj Issue

As well as the stamps, postal stationery was overprinted.



Unused Postal Stationery Card

Postal Stationery needed additional payment for registration, paid here by a Cluj Overprinted Stamp



Censored, Registered Overprinted PSC uprated with 10f War Charity Overprint of Cluj Issue
From Felsocsertes to Deva

Felsocsertes Registration Label and CDS (27 May 1920)

Deva Censor Mark and Deva Arrival CDS (27 May 1920)

**VERY UNUSUAL MIXED FRANKING WITH OVERPRINTED POSTAL
STATIONERY AND ROMANIAN POSTAL TAX STAMPS PAYING POSTAGE**



Uprated Registered PSC Petrozsény (now Petrosani) to Muhlbach (now Sebes) – 1920

3*10b Postal Tax Stamps on 10b overprinted PSC Tied with Petrozsany 28th March 1920 cds
(modified Hungarian type) and Petrozsény Registration label (Hungarian label)

Black Deva Censor mark

Purple Commercial Receiving Mark for 30th March 1920 on front and Szaszsebes cds for 20th
March 1920 (on reverse)

The 40b payment (10b Postage, 25b Registration Fee and 5b Postal Tax) is paid by the 10b card
and 3*10b Postage Tax Stamps that are not valid for postage, but have been allowed in this case.

Romanian Postal Stationery needed additional payment for services abroad, here paid for with a mix of Romanian and Overprinted stamps



Uprated Registered PSC from Bistrita to Wien - 1921

20b Romanian PSC with 20f Karl of the Cluj issue, 2*30b and 2l Romanian definitives. Tied with Bistrita CDS 5th August 1921. Correct 1l postage and 2l registration fee paid

"R" handstamp and manuscript 8822 (registration number)

Superb Mixed, Uprated Franking



Registered Censored Cover from Nagyósz to Oradea (Nagyvarad) - 1920

3*25b of the 1893-1900 Definitive series, 2*20f Karl (Cluj Issue) and 15b of 1908 Definitive Series tied with Nagyósz CDS 13th September 1920 Correct 30b [postage and 2l registration fee paid]

Nagyósz registration label

Oradea Censor Mark

Superb Mixed Franking



Cover locally sent in Bethlen - 1921

20b Karl paying correct postage rate, with Romanian 10b aid stamp paying compulsory postal tax, tied with Bethlen cds 18th August 1921

Due to scarcity of paper, items were re-used. Below is a scarce example of a field post card pressed into service as a postcard)



Postcard from Timisoara to Varna (Bulgaria)

Military Field Post Card has been used as a postcard by striking out the "Tabori Postai Levelezolap" and 1k Cluj Issue Stamp added.

Indistinct Timisoara CDS. Card dated 12th November 1921. Correct 1l postage for a post card paid.