

Romania

1920–27 Definitives

Essays

Orange 2b, 5b, 6b, 10b and 1l , imperforate on cream carton paper

This design was not adopted



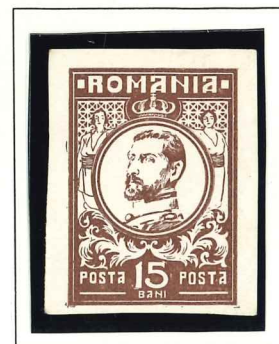
Romania

1920-27 Definitives

Essays

Brown 5b, 6b, 10b, 15b and 10l , imperforate on white paper

This design was not adopted



Romania

1920–27 Definitives

Essays

Red 2b, 5b, 10b, 15b and 1l , imperforate on white paper

This design was not adopted



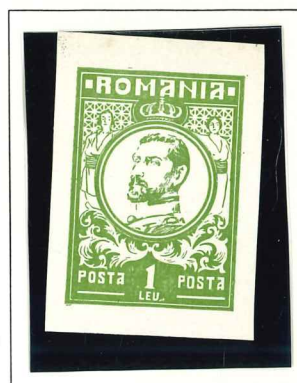
Romania

1920–27 Definitives

Essays

Green 2b, 5b, 6b, 10b, 15b 20b and 1l, imperforate on white paper

This design was not adopted



Romania

1920-27 Definitives

Essay

10 Lei – Green, Red, Brown, Purple, Green and Dark Green imperforate on white carton paper

This design was not adopted for this set.



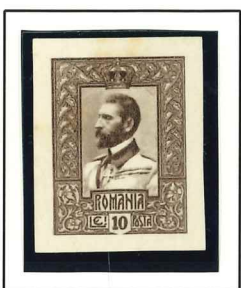
Romania

1920–27 Definitives

Essay

10 Lei – Blue, Carmine, Red, Brown, Purple, and Green imperforate on white carton paper

This design was not adopted for this set.



1920–27 Definitives

Essay

5 Lei – Green, Red, Brown, Purple, Blue and Carmine imperforate on white carton paper

This design was not adopted for this set.

