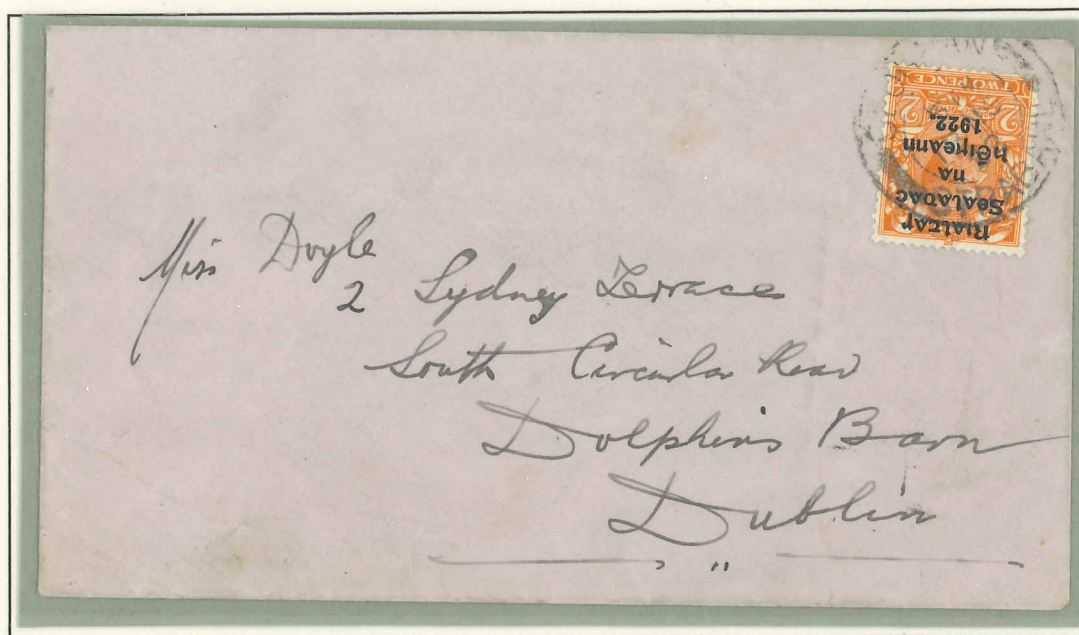


PC8-60

IRELAND

THOM
JUNE - NOV. 1922 PRINTING

Cross border handstamp.



November 18, 1922.

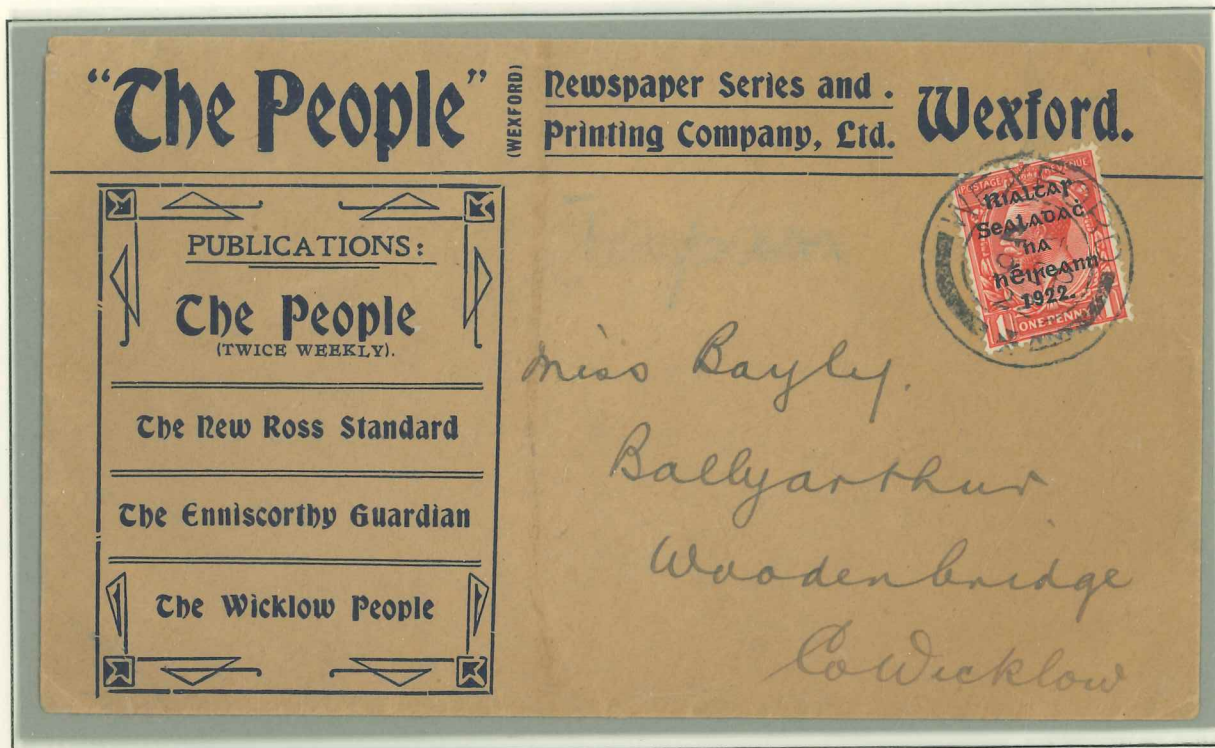
This Blue-Black Thom overprint (on Die II) is cancelled
by an Irish post office that had an Ulster head office.

Cloghan is in County Donegal; Strabane is in the 6 Counties, Northern. Ireland.

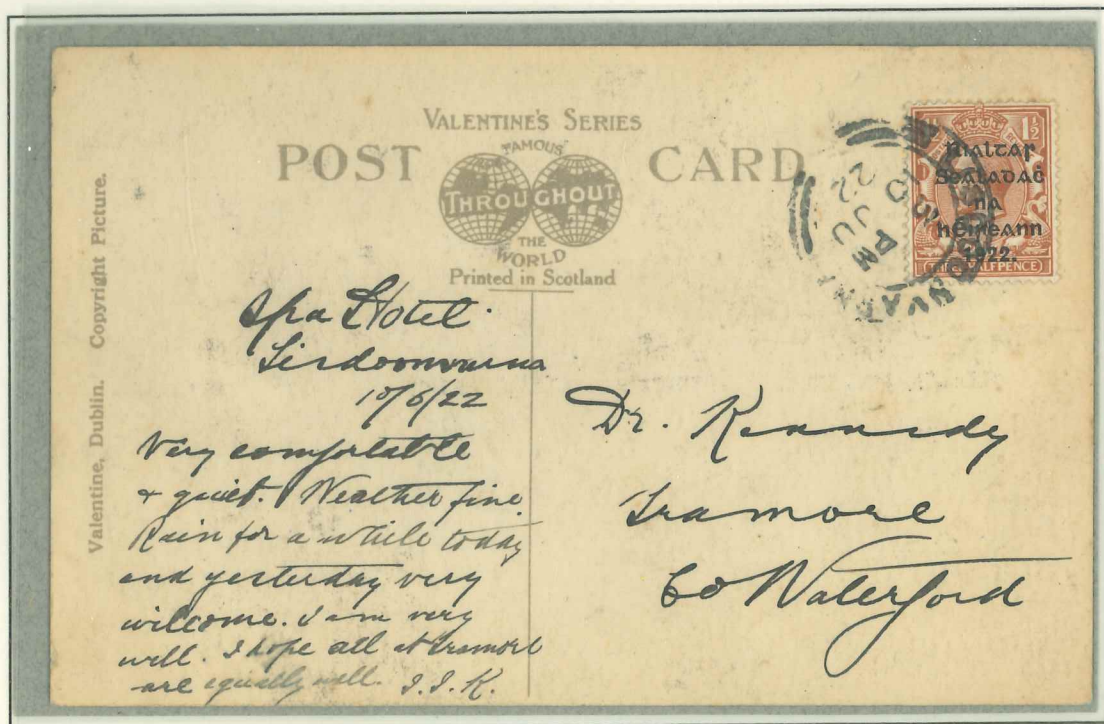
PC 8-61

IRELAND

THOM
JUNE - NOV. 1922 PRINTING



1 penny printed paper rate.

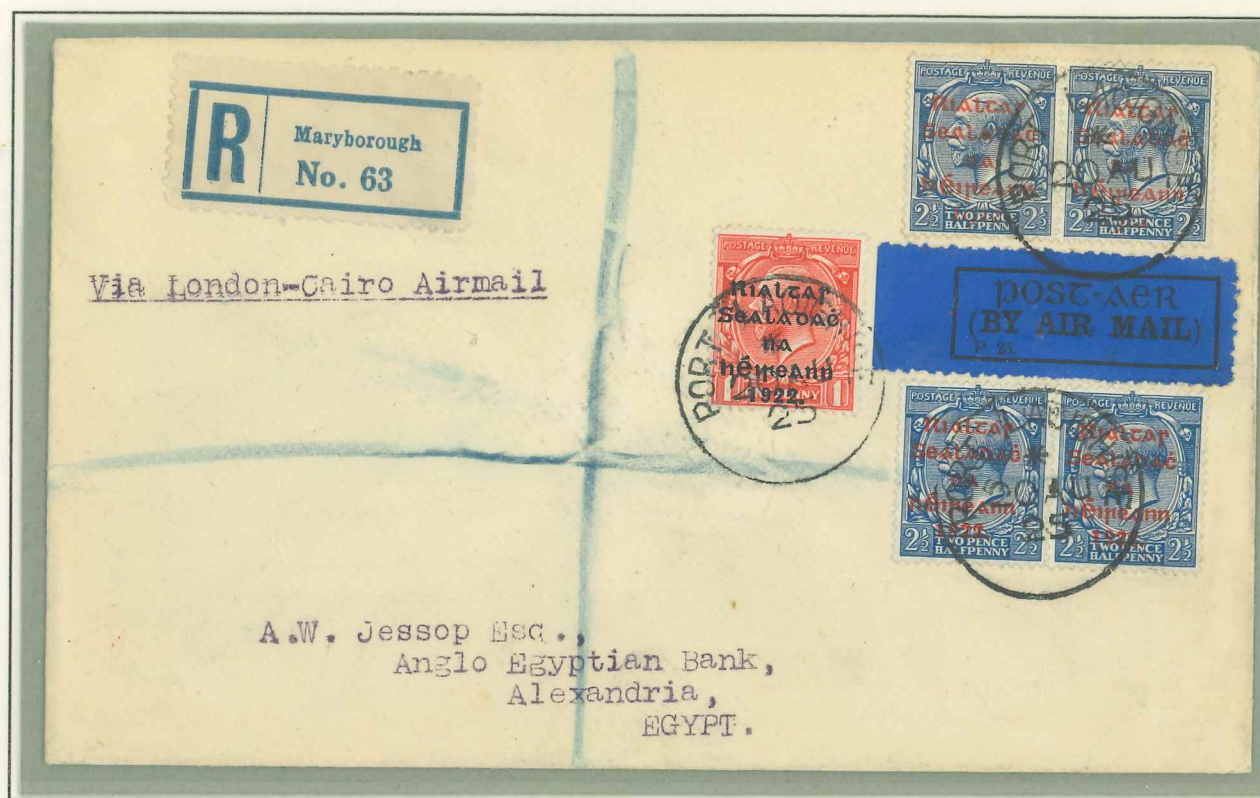


1 1/2 pence post card rate.

PC8-62

IRELAND

MIXED FRANKING



All overprints were valid concurrently.

The upper pair of 2 1/2 pence are Dollard overprints.

The lower pair are Thom June - Nov., 1922. issue.

The 1 penny is a Thom April - July, 1922. issue.

NOTE: Red dot above 2nd 'a' of Rialtas on left Thom 2 1/2 pence stamp.

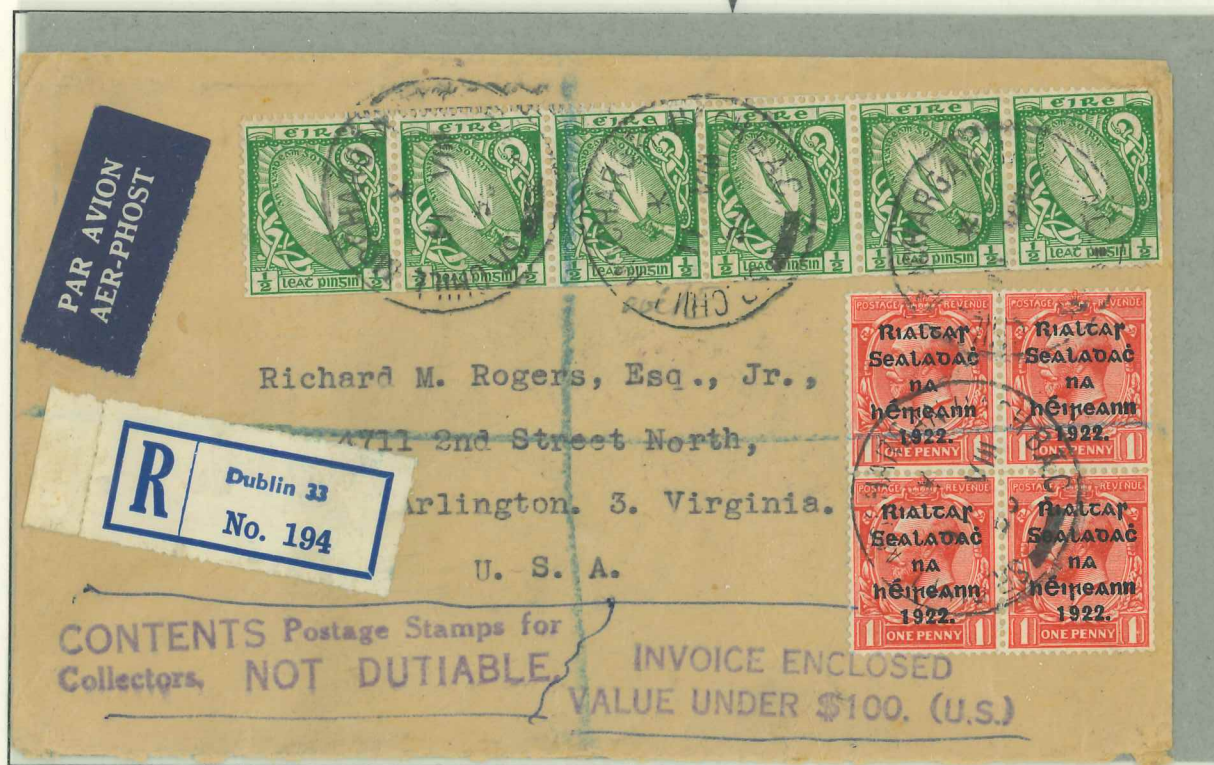
IRELAND

THOM OVERPRINT

1922 PRINTING

MIXED FRANKING

1/2 Pence coil strip of 6 with coil join in middle.



Foreign mail registration fee 1959
 Airmail letter rate 15 pence per 1/2 ounce

6 pence
 30 pence
TOTAL 36 pence

NOTE: 29 pence postage is located on reverse side of envelope.

PC 8-64

IRELAND

DOLLARD & THOM OVERPRINTS
1922 -23 PRINTINGS MIXED FRANKINGS

Air mail flight cover London to Cairo, Egypt October 1924.



Post card embossed Lienster House Bray, Ireland.
Cancelled Phipsborough District Office, Dublin Feb. 26 1923.

