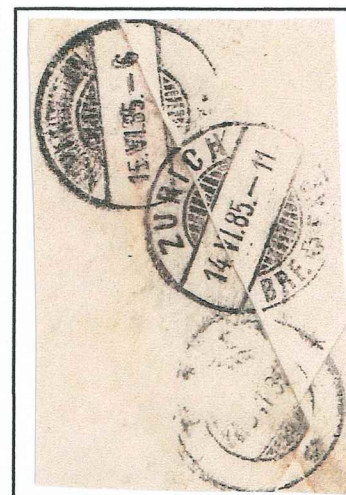


LONDON HOSTER CANCELLATIONS 1882 - 1893

HOSTER TYPE III CANCEL. Without Asterisk between Month & Day.

Type III used from 19th January 1885 to 3rd July 1887

Type III Used example 28th March 1885.
One pence single-weight letter rate for domestic mail
Queen Victoria 1d pink postal stationery



**Backstamp
Various backstamps &
Zurich "14 VI 85"**

**Envelope addressed to Switzerland with Queen Victoria 2½d postage & revenue stamp
Dated 13th June 1885**

Enlarged copy of Postmark



Envelope with Queen Victoria 2½d stamp cancelled by Hoster Type III postmark

Without Asterisk between Month and Day

Dated London EC 13th June 1885

Code "4" below London, with "JU - 13" below code, and 85 below month & day and "EC" below year
Backstamped Zurich "14 VI 85" plus two others unreadable.

LONDON HOSTER CANCELLATIONS 1882 - 1893

HOSTER TYPE IVa CANCEL

Type IVa used from 22nd December 1884 to 3rd January 1887

As Type III. Single ring (30mm) with 14 thick bars sloping downwards on right.

Corners on left each consist of one straight bar and corner triangle. With 4th & 3rd bar from bottom with figures cut in "11" in 4th bar and "22" in 3rd bar. LONDON at top (24 mm) EC at bottom (9 mm).

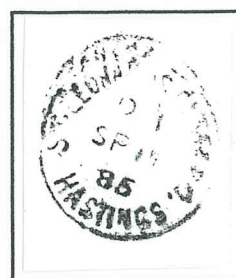
Code "-" below London, without asterisk between month and day below code and year below month & day.

Type IVa Used example 11th September 1885.

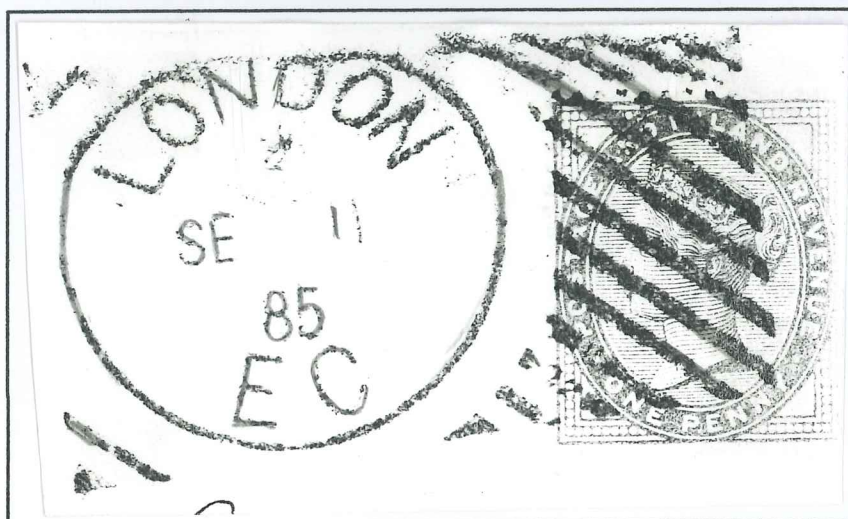
One pence single-weight letter rate for domestic mail. Queen Victoria 1d lilac 14 dots Die 1. Issued 12th July 1881



Envelope sent from London E.C. to St. Leonards on Sea.



Backstamp
St. Leonards on Sea
Hasting
Code "01 SP 11 85"



Enlarged copy of Postmark



With 4th & 3rd bars figures cut in
"11" in 4th bar and "22" in 3rd bar



Queen Victoria 1d lilac Die 1. 14 dots cancelled by Hoster Type IVa postmark

Code "2" below London, with month "SE" & day "11" no asterisk below code, and year "85" below month & day.

The third and fourth bars have figures cut into them to enable faults to be traced to a particular machine

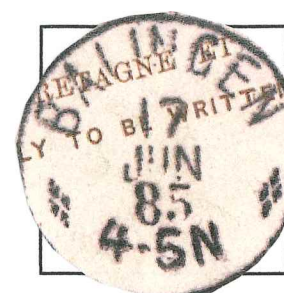
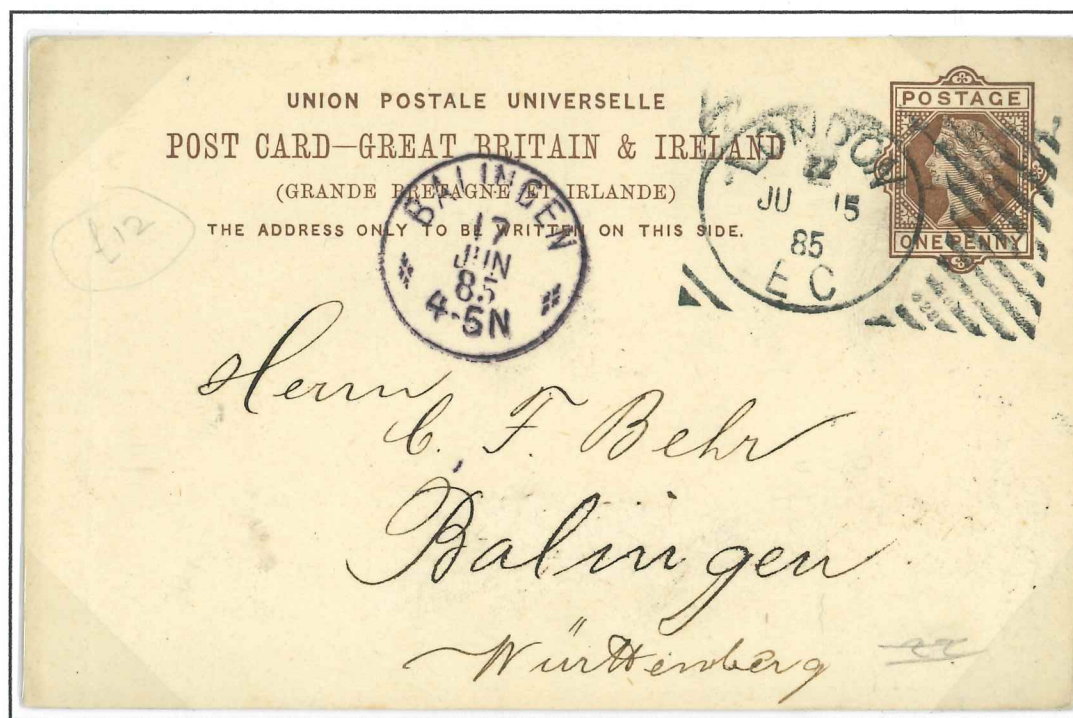
LONDON HOSTER CANCELLATIONS 1882 - 1893

HOSTER TYPE IVa CANCEL

Type IVa used from 22nd December 1884 to 3rd January 1887
As Type III. Single ring (30mm) with 14 thick bars sloping downwards on right.

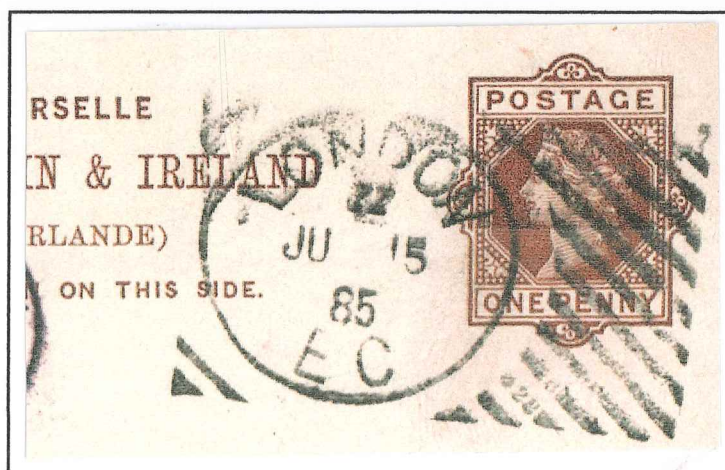
Type IVa Used example 15th June 1885.

One pence single-weight letter rate for domestic mail. Queen Victoria 1p UPU Postcard

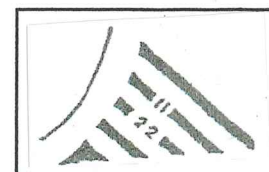


Postmark
Balingen
Code "17 JUN 85"

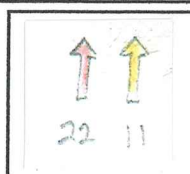
1p UPU Postcard from Alfred Luhnstein, London addressed to C F Behr Balingen.



Enlarged copy of Postmark



With 4th & 3rd bars figures cut in
"11" in 4th bar and "22" in 3rd bar



Queen Victoria 1p UPU Postal Stationary, cancelled by Hoster Type IVa postmark
Code "22" below London, with month "JU" & day "15" no asterisk below code, and year "85" below month & day.
The third and fourth bars have figures cut into them to enable faults to be traced to a particular machine

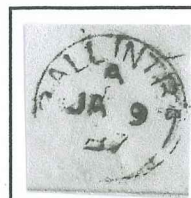
LONDON HOSTER CANCELLATIONS 1882 - 1893

HOSTER TYPE IVa CANCEL. Variety Asterisk between month & day

Type IVa used from 22nd December 1884 to 3rd January 1887

Type IVa Used example 17th January 1887.

One pence single-weight letter rate for domestic mail. Queen Victoria 1d lilac 14 dots Die 1. Issued 12th July 1881



Backstamp
Bellintree
Code "A JA 19 87"

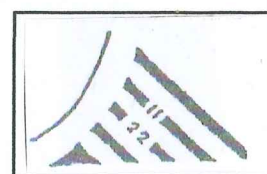


Backstamp
Donegal
Code "A JA 19 87"

Entire Letter sent from London E.C. to Ballintree, County Donegal, Ireland



Enlarged copy of Postmark



With 4th, 3rd bars
figures cut in
"11" in 4th bar
And
"22" in 3rd bar



Queen Victoria 1d lilac Die 1. 14 dots cancelled by Hoster Type IVa postmark. Dated London E.C. 17th January 1887
Code "N" ("Z" on side) below London, with "JA" Asterisk "17" below code, and "87" below month & day & above E.C.

cheque and returned the £5
to Mrs Hamilton as she requested
to avoid the necessity of sending
the Hamiltons to draw another
But this is pure hypothesis in
my part and when I write
her I will ask what they really
want - took place and to let her
know.

I am sure that they will
agree with me in thanking you
for the very handsome way in
which you have treated the

claim against the late Mr Hamilton
I will forward the your kind
reply.

Yours faithfully



**LONDON HOSTER CANCELLATIONS
1882 - 1893**

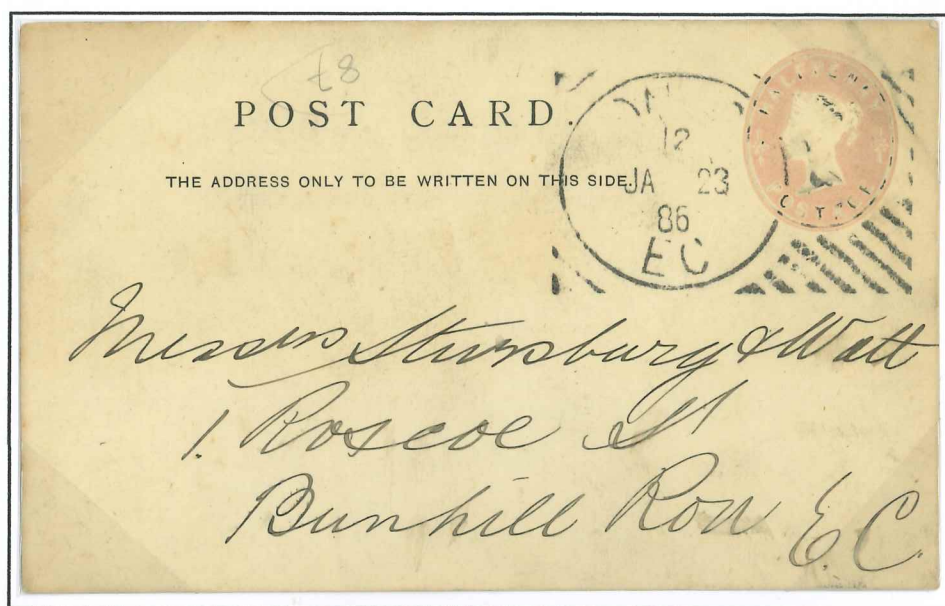
HOSTER TYPE IVb CANCEL

Type IVb used from 2nd January 1885 to 8th May 1886
As Type III. Single ring (30mm) with 14 thick bars sloping downwards on right.

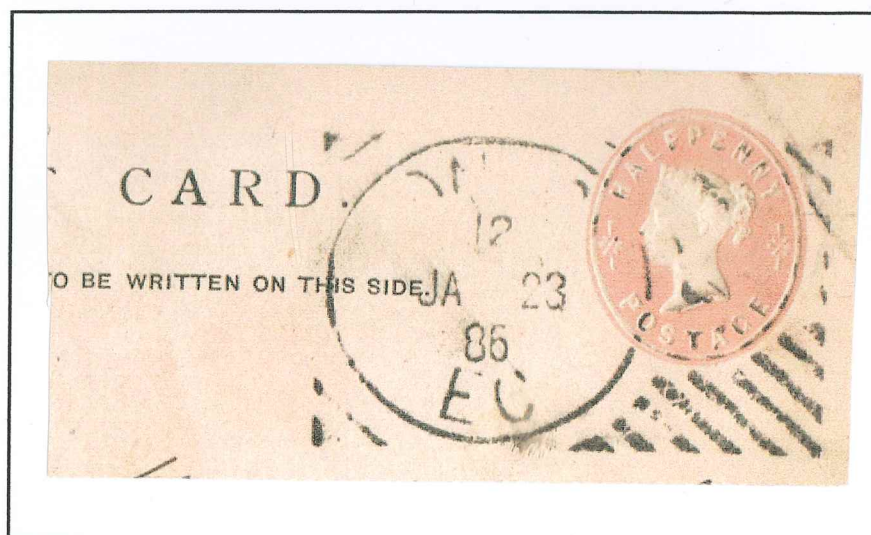


Type IVb Used example 23rd January 1886.

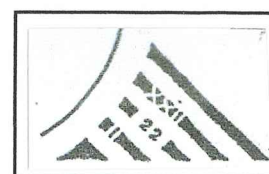
One pence single-weight letter rate for domestic mail. Queen Victoria ½p Postal Stationary



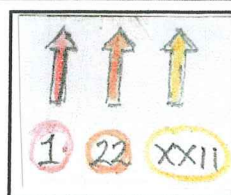
½p Postal Stationary from J Jacob, 23 & 24 Brooke Street, London from London E.C. to Bunhill Row E.C.



Enlarged copy of Postmark



With 4th, 3rd & 2nd bars
from bottom with figures
cut in "XX11" in 4th bar,
"22" in 3rd bar and
"1" in 2nd bar.



1/2p Postal Stationary from J Jacob, 23 & 24 Brooke Street, Holborn, London. cancelled by Hoster Type IVb postmark.

Dated London EC 23rd January 1886

Code "12" below London, with "JA" - "23" below code, and 86 below month & day.

LONDON HOSTER CANCELLATIONS 1882 - 1893

HOSTER TYPE IVb CANCEL. Variety Asterisk between month & day

Type IVb used from 2nd January 1885 to 8th May 1886

As Type III. Single ring (30mm) with 14 thick bars sloping downwards on right.

Type IVb Used example 3rd March 1886.

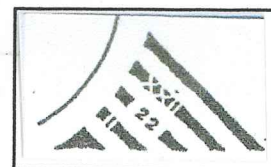
One pence single-weight letter rate for domestic mail, Queen Victoria 1d lilac 16 dots Die 11. Issued 12th December 1881



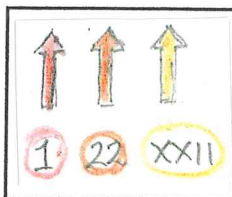
Envelope from London E.C. to 169 Upper Thames Street, E.C.



Enlarged copy of Postmark



With 4th, 3rd & 2nd bars
from bottom with figures
cut in "XX11" in 4th bar,
"22" in 3rd bar and
"1" in 2nd bar.



Queen Victoria 1d lilac Die 11. 16 dots cancelled by Hoster Type IVb postmark. Dated London EC 3rd March 1886
Code "4" below London, with "MR" Asterisk "£" below code, and 86 below month & day.

LONDON HOSTER CANCELLATIONS 1882 - 1893

HOSTER TYPE VIb CANCEL

Type VIb used from 18th January 1886 to 23rd June 1887

Type VIb Used example 15th November 1886.

One pence Non Commercial Postal Card Rate to Overseas destination



**1 Penny Non Commercial Postal Card to Amsterdam dated 15th November 1886
From Tudor Street, London E.C. To Amsterdam**

Enlarged copy of Postmark



**Queen Victoria 1 penny Non commercial postal card cancelled by Hoster Type VIb postmark
Dated London EC 15th November 1886 addressed to Amsterdam with double circle postmark dated 16th November 1886
Code "X" below London, with "NO" asterisk "15" below code, and "E 86 C" below month & day.
With Stars each side of Month & Day, Code "2" in bottom corner**

LONDON HOSTER CANCELLATIONS 1882 - 1893

HOSTER TYPE VIB CANCEL

Type Vlb used from 18th January 1886 to 23rd July 1887.

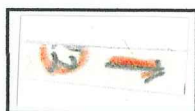
Type VIB Used example 2nd August 1887.

½ d single-weight Postcard rate for domestic mail. Queen Victoria ½ d Postal Stationary



½ d Postal Stationary Postcard cancelled with Hoster Vlb postmarked 2nd August 1887

Enlarged copy of Postmark



½ d Postal Stationary Postcard for Domestic Mail

Dated London EC 2nd August 1887

Code "Z" below London, with "AU" asterisk "2" below code, and "E 87 C" below month & day.

With Stars each side of Month & Day. Type "B" with figure "2" in left lower corner

From Proprietary House and Lanf Corporation, Limited. 29 New Bridge Street, Ludgate Circus, EC

LONDON HOSTER CANCELLATIONS 1882 - 1893

HOSTER TYPE VIIA CANCEL

Type VIIA used from 19th April 1887 to 1st August 1890

Type VIIA Used example 6th October 1887.

One pence single-weight letter rate for domestic mail

Queen Victoria 1d lilac 16 dots Die II. Issued 12th December 1881



Mourning envelope sent from London E.C. to Campbeltown. Dated 6th October 1887

Copy of Postmark



Queen Victoria 1d lilac 16 dots
cancelled by Hoster Type VIIA

postmark London EC Hodded Cancel OC 6 87 and Hoster cancel 6th October 1887

Code "10" below London, with "OC"- "6" below code,
and "E 87 C" below month & day.

Stars each side of Month & Day

14 Bars sloping at right.

LONDON HOSTER CANCELLATIONS 1882 - 1893

HOSTER TYPE VIIA CANCEL

Type VIIA used from 19th April 1887 to 1st August 1890

Type VIIA Used example 19th March 1883.

½ d single-weight Postcard rate for domestic mail. Queen Victoria ½ d Postal Stationary



Queen Victoria ½ d Postal Stationary Sent from London EC to Basinghall Street. London EC.

Copy of Postmark



½ d Queen Victoria Postal Stationary Postcard. Cancelled by Hoster Type VIIA
postmark London E.C. 19th March 1883. Addressed to London EC.

Code "X" below London, with "MR - 19" below code, with Stars (*) each side of date
and "EC" below stars & 88 with 14 Bars sloping downwards at right

Postcard from Societe De Secours Mutuels Des Suisses A Londres, 21 Old Compton Street, Soho.

LONDON HOSTER CANCELLATIONS 1882 - 1893

HOSTER TYPE VIIA CANCEL

Type VIIA used from 19th April 1887 to 1st August 1890

Type VIIA Used example 5th November 1888.

One pence single-weight letter rate for domestic mail

Queen Victoria 1d lilac 16 dots Die II. Issued 12th December 1881



**Envelope for Grant & Co. Ltd. Designers Turnmill Street sent from London E.C. to Newcastle Emlyn.
Dated 5th November 1888**

Copy of Postmark



Company Backstamp



**Backstamp
Newcastle Emlyn
Code "A NO 6 88"**

Queen Victoria 1d lilac 16 dots cancelled by Hoster Type VIIA

Postmark London E.C. 5th November 1888

**Code "X" below London, with "NO"- "5" below code,
and "E 88 C" below month & day.**

Stars each side of Month & Day

14 Bars sloping at right.

**LONDON HOSTER CANCELLATIONS
1882 - 1893**

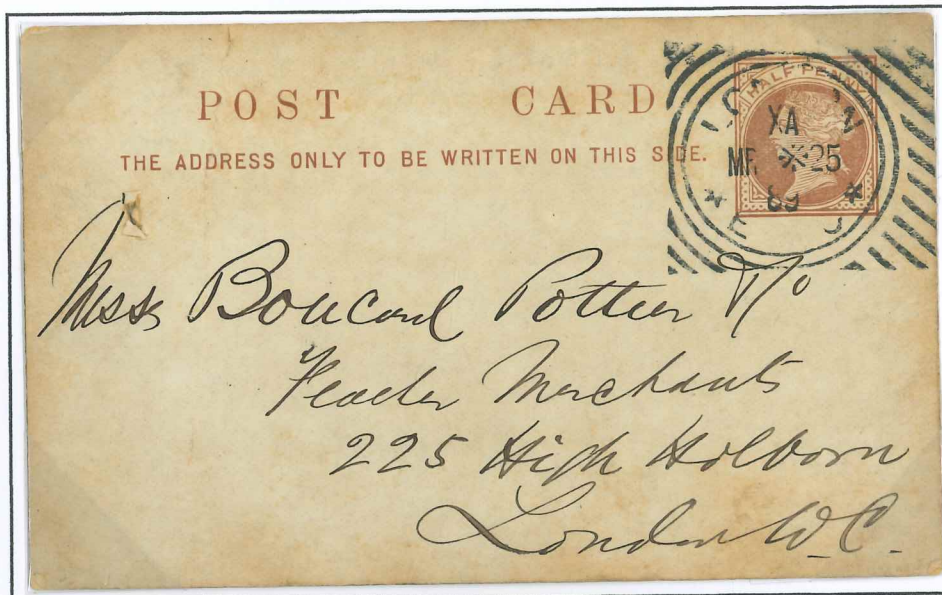
HOSTER TYPE VIIA CANCEL with Variety " * 87 *between month/day & E.C."

Type VIIA used from 19th April 1887 to 1st August 1890

Type VIIA Used example 25th March 1889.

One pence single-weight letter rate for domestic mail

Privately printed postal stationery postcard from J Coates, Laurence Pountney Hill, London E.C.



One pence single-weight letter rate for domestic mail

with Queen Victoria Privately printed postal stationery postcard

From J Coates & Co. Suffolk House, Laurence Pountney Hill London E.C.

Addressed to High Holborn London W.C dated 25th March 1889

Copy of Postmark



**1d privately printed postal stationery postcard for single domestic mail cancelled by Hoster Type VIIA
postmark London E.C. 25th March 1889**

**Code "XA" below London, with "MR Asterisk 25" below code, with Stars each side of year "89"
and "E C" below stars & 89. 14 Bars sloping downwards at right.**

**LONDON HOSTER CANCELLATIONS
1882 - 1893**

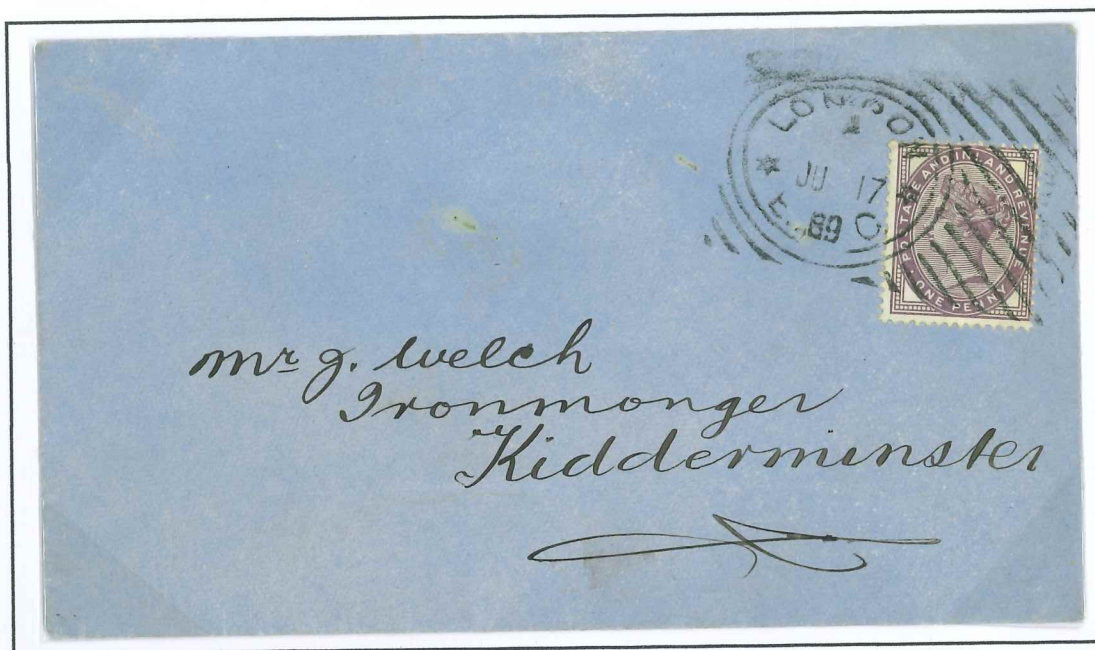
HOSTER TYPE VIIA CANCEL

Type VIIA used from 19th April 1887 to 1st August 1890

Type VIIA Used example 17th June 1889.

One pence single-weight letter rate for domestic mail

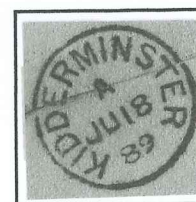
Queen Victoria 1d lilac 16 dots Die II. Issued 12th December 1881



**Envelope for Henry Bourn Upper Thames Street sent from London E.C. to Kidderminster.
Dated 17th June 1889**



Copy of Postmark



**Backstamp
Kidderminster
Code "A JU 18 89"**

Queen Victoria 1d lilac 16 dots cancelled by Hostler Type VIIA

Postmark London E.C. 17th June 1889

**Code "A" below London, with "JU"- "17" below code,
and "E 89 C" below month & day.**

Stars each side of Month & Day

14 Bars sloping at right.

**LONDON HOSER CANCELLATIONS
1882 - 1893**

HOSER TYPE VIIA CANCEL Variety Missing "E.C."

Type VIIA used from 19th April 1887 to 1st August 1890

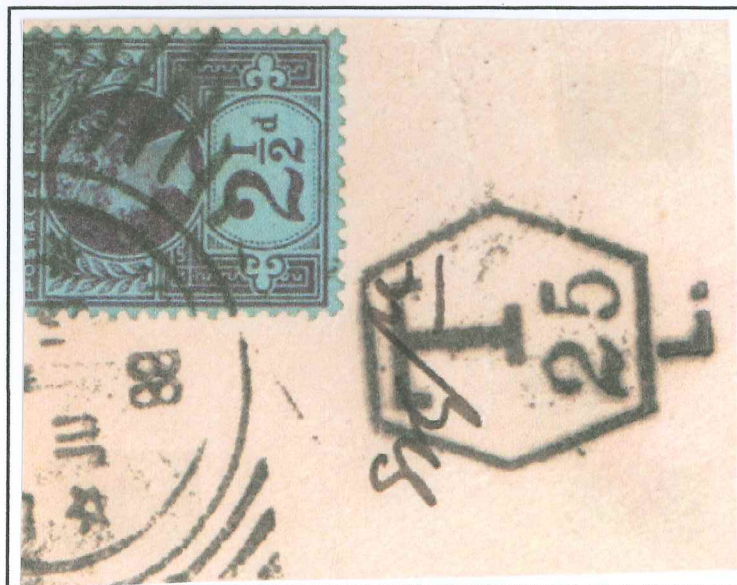
Type VIIA Used example 18th June 1888.

2½d non commercial Postal Rate to Overseas destination
from London E.C. to Vermont USA.



2½d Non commercial rate to overseas destination sent from London E.C. to Vermont USA
With New York receiver Due 10 cent code "H Jun 24 88" in double circle & lozenge "T 25 L"

Copy of Postmark



Queen Victoria 2½d rate to USA with Due Tax
Code "X" below London, with "JU" - "18" with stars each side,
below code, and no E.C. "90" below month & day.

**LONDON HOSTER CANCELLATIONS
1882 - 1893**

HOSTER TYPE VIIA CANCEL with Variety "Asterisk" between "Month and Day"

Type VIIA used from 19th April 1887 to 1st August 1890

Type VIIA Used example 25th June 1889.

1d single-weight letter rate for domestic mail. ½d postal stationery postcard with ½d vermilion additional postage tied by London squared circle sent from Woolley Sanders, Wood Street, London E.C.



Privately printed postal stationery postcard sent from Wood Street, London E.C. to deleted address
Dated 25th June 1889. ½d vermilion additional postage tied by London W Squared circle.

Copy of Postmark



1d single-weight letter rate for domestic mail cancelled by Hoster Type VIIA
postmark London E.C. 25th June 1889

Code "5" below London, with "JU Asterisk 25" below code, with Stars each side of Month & Day
and "E 89 C" below month & day. 15 Bars sloping at right.

**LONDON HOSTER CANCELLATIONS
1882 - 1893**

HOSTER TYPE VIIA CANCEL with Variety "Day before Month"&" * 89 *between day/month & E.C."

Type VIIA used from 19th April 1887 to 1st August 1890

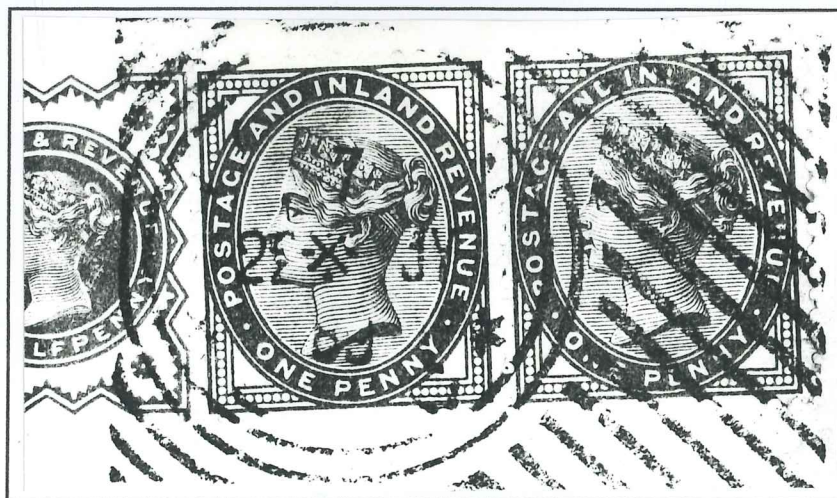
Type VIIA Used example 22nd July 1889.

**2½d non commercial Postal Rate to Overseas destination
from London E.C. to Slavonia, Austria-Hungary.**



**2½d non commercial Postal Rate to Overseas destination from London E.C. to Slavouia
Envelope with ½d Vermilion and pair of 1d lilac 16 dots addressed to Slavonia, Austria-Hungary
dated 22nd July 1889**

Copy of Postmark



**2½d non commercial Postal Rate to Overseas destination cancelled by Hoster Type VIIA
postmark London E.C. 22nd July 1889 addressed to Slavonia, Austria-Hungary**

**Code "7" below London, with "22 Asterisk JY" (date before month variety) below code, with Stars each side of year "89"
and "E C" below stars & 89. 15 Bars sloping downwards at right.**

LONDON HOSTER CANCELLATIONS 1882 - 1893

HOSTER TYPE VIIA CANCEL Variety "No Stars" or "E.C."

Type VIIA used from 19th April 1887 to 1st August 1890

Type VIIA Used example 17th September 1889

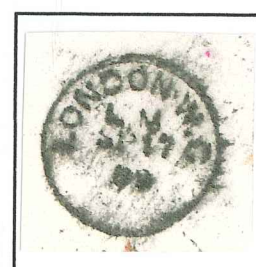
One pence single-weight letter rate for domestic mail

Queen Victoria 1d lilac 16 dots Die 11. Issued 12th December 1881



1d single-weight letter rate for domestic mail with Queen Victoria 1d lilac 16 dots Die 11. Dated 17th September 1889
From London EC to Lincoln Inn, London WC

Enlarged copy of Postmark



Postmark
London WC

1d single-weight letter rate for domestic mail with Queen Victoria 1d lilac 16 dots Die 11. Dated 17th September 1889
Code "6" below London, with "SE" - "17" below code, and "89" below month & day. 16 thin bars from right to left.

LONDON HOSTER CANCELLATIONS 1882 - 1893

HOSTER TYPE VIII CANCEL

Type VIII used from 9th February 1891 to 28th February 1893.

Double ring (30mm & 26mm) with only 12 thick bars sloping downwards on right.

Corners at left with consist of one slightly curved bar and triangle

LONDON at top (21 mm). Code below London. EC below with year between letters 12½ mm over all
Star on each side of date. This type is very distinctive and sometimes seems to be without the "E.C."

Copy of Hoster Type VIII Cancel
Details as above



Type VIII Used example 5th April 1892.
1d UPU Postal Stationary Postcard rate for overseas destination



UPU 1d postcard sent from London E.C. To Leiden, Holland postmarked 5th April 1892



Enlarged
copy of
Postmark

1d UPU postcard cancelled by Hoster Type VIII postmark. Dated London EC 5th April 1892
Code "10" below London, with "AP" - "5" below code, and "92" below month & day. Stars (very faint)
each side of Month & Day. Without E.C.

**LONDON HOSER CANCELLATIONS
1882 - 1893**

HOSER TYPE IX CANCEL.

Type IX used from 17th January 1890 to 12th September 1893.

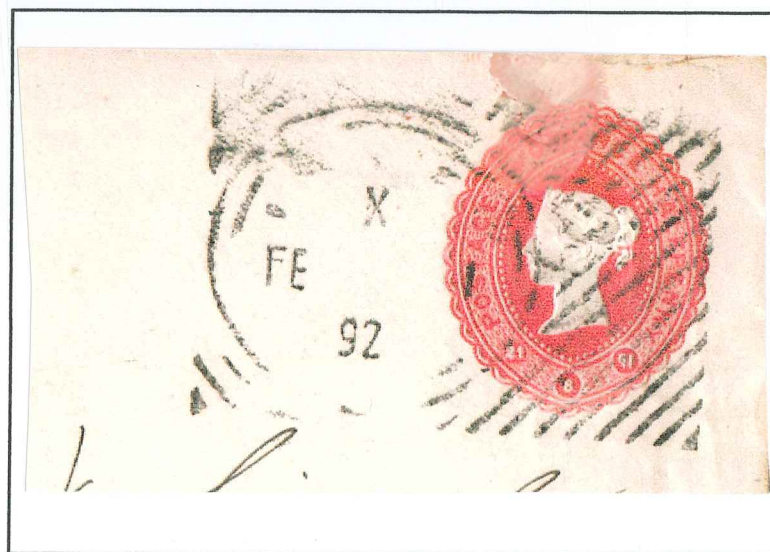
Type IX Used example 1st February 1892.
1d Pink Postal Stationary postcard for inland rate



1d pink postal stationary cover for Chas Lavy & Co. London sent from London E.C. to Karlsruhe, Germany.
Dated 1st February 1892



Enlarged copy of Postmark



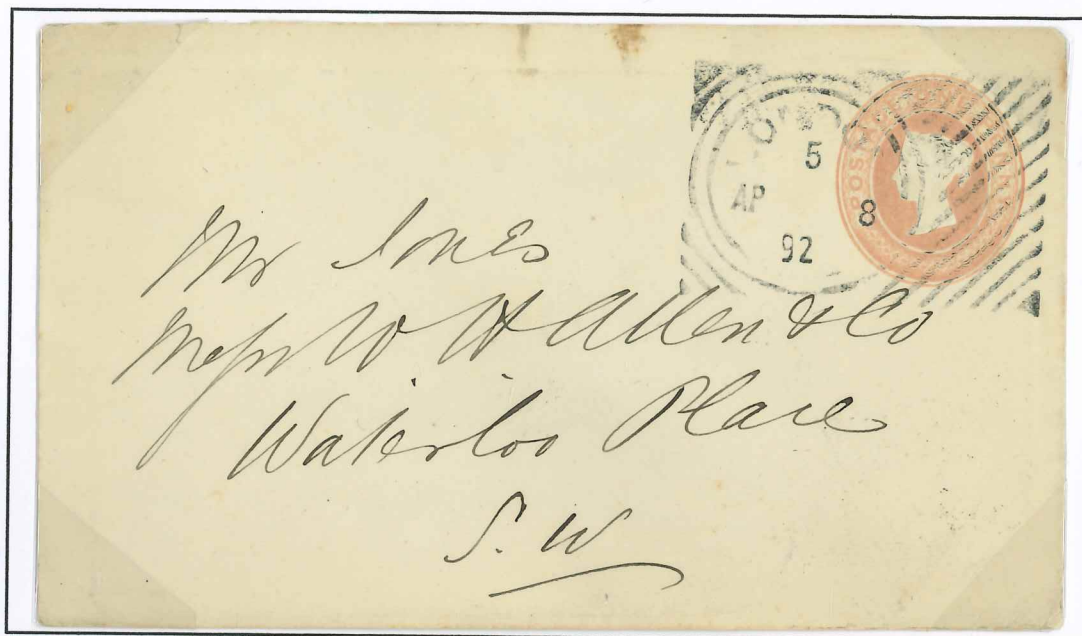
1d pink postal stationery for Chas Lavy & Co. London postmark London E.C. 1st February 1892
Code "X" below London, with "FE" - "1" below code, and "92" below month & day. No E.C. 18 bars sloping upwards

LONDON HOSTER CANCELLATIONS 1882 - 1893

HOSTER TYPE IX CANCEL.

Type IX used from 17th January 1890 to 12th September 1893.

Type IX Used example 8th April 1892
1d Postal Stationary Envelope for Domestic Postage Rate



Queen Victoria 1d Postal Stationary Envelope dated 8th April 1892
From London EC to Waterloo Place London SW

Enlarged copy of Postmark



Backstamp
London SW
"5 AP 8 92"

Queen Victoria 1d Postal Stationary Envelope used for Domestic Postage. Postmarked 8th May 1892 London EC.
Code "5" below London, with "AP" - "8" below code, and "92" below month & day. 16 thin bars from right to left.

LONDON HOSER CANCELLATIONS 1882 - 1893

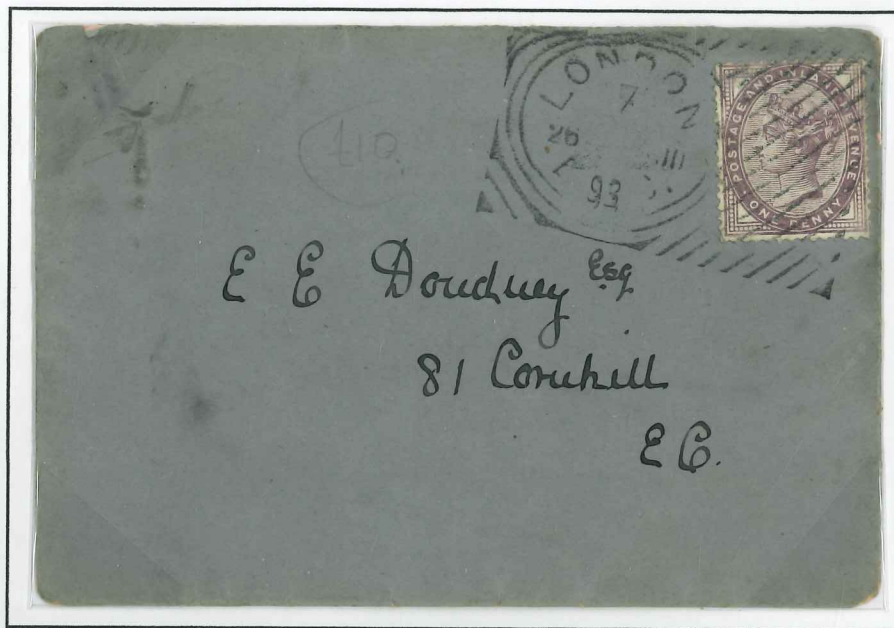
HOSER TYPE IX CANCEL.

Type IX used from 17th January 1890 to 12th September 1893.

Type IX Used example 26th June 1893

One pence single-weight letter rate for domestic mail

Queen Victoria 1d lilac 16 dots Die 11. Issued 12th December 1881



Envelope with Queen Victoria 1d lilac 16 dots Die 11. Issued 12th December 1881. Dated 26th June 1893
From London EC to London EC.

Enlarged copy of Postmark



Queen Victoria 1d lilac 16 dots Die 11. Issued 12th December 1881. Postmarked 26th June 1893 London EC.
Code "7" below London, with "26" - "JU" below code, and "93" below month & day. 16 thin bars from right to left.

LONDON HOSTER CANCELLATIONS 1882 - 1893

HOSTER TYPE IXa CANCEL. With Variety no E.C. each side of year.

Type IXa used from 17th January 1890 to 12th September 1893.

Double ring 30 and 26mm, with 18 thin bars sloping upwards on right.

Corners on left have one slightly curved and one straight bar and triangle

The corner bars next to the ring sometimes extend like an outside frame above and below the date stamp.

LONDON at top (21 mm). No E.C. between year at bottom

Code below LONDON. Asterisk between Month & Year each side between LONDON & Year.

Type IXa Used example 12th November 1890.

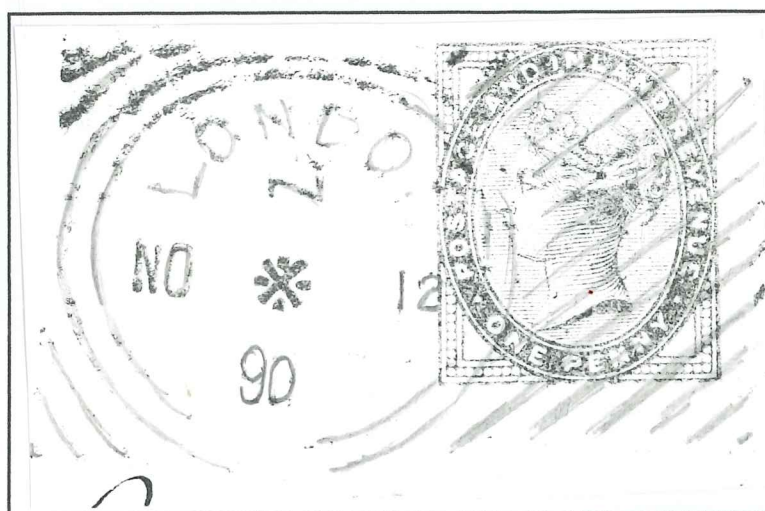
One pence single-weight letter rate for domestic mail

Queen Victoria 1d lilac 16 dots Die 11. Issued 12th December 1881



Envelope with 1d single weight letter rate for domestic mail sent from London E.C. to Lancaster.
Dated 12th November 1890

Enlarged copy of Postmark



Queen Victoria 1d lilac 16 dots cancelled by Hoster Type IXa postmark London E.C. 12th November 1890
Code "Z or 2 sideways" below London, with "NO" asterisk "12" below code, and "90" No E.C. below month & day.

The Gas Light & Coke Company,

CHIEF OFFICE, HORSEFERRY ROAD,

WESTMINSTER, S.W.,

August, 1876.

SIR,

I beg to enclose herewith Certificates
of the amount of Consolidated Stock of this
Company registered in your name on the 1st
June last in accordance with my Circular of the
26th May last, and I shall be obliged by your
sending me an acknowledgment, at your earliest
convenience, on the enclosed form.

I am, Sir,

Your obedient Servant,

JOHN ORWELL PHILLIPS,

SECRETARY.

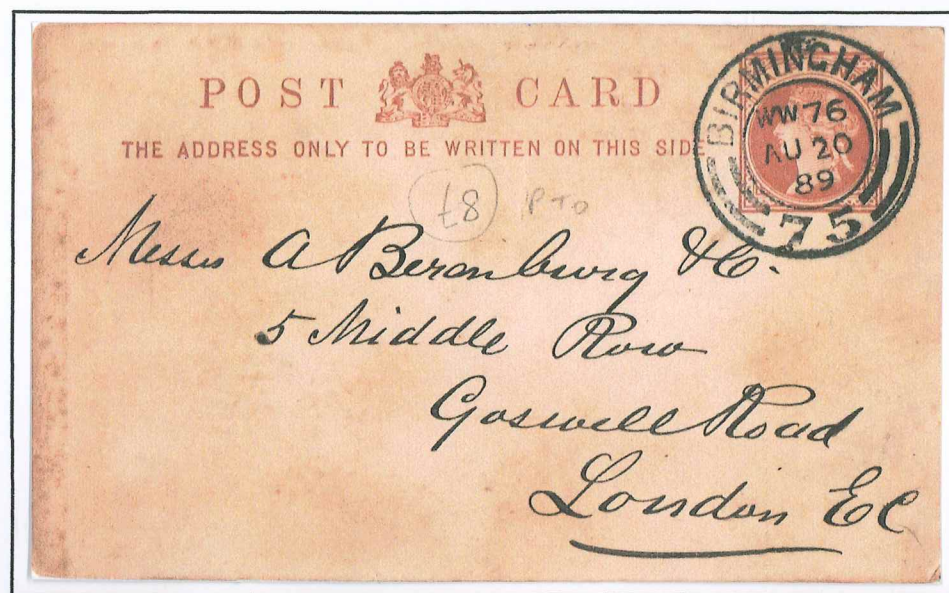
**LONDON HOSER CANCELLATIONS
1882 - 1893**

HOSER MODIFIED DATE DIE

Used for Backstamp or Receiver Mark, from 1888

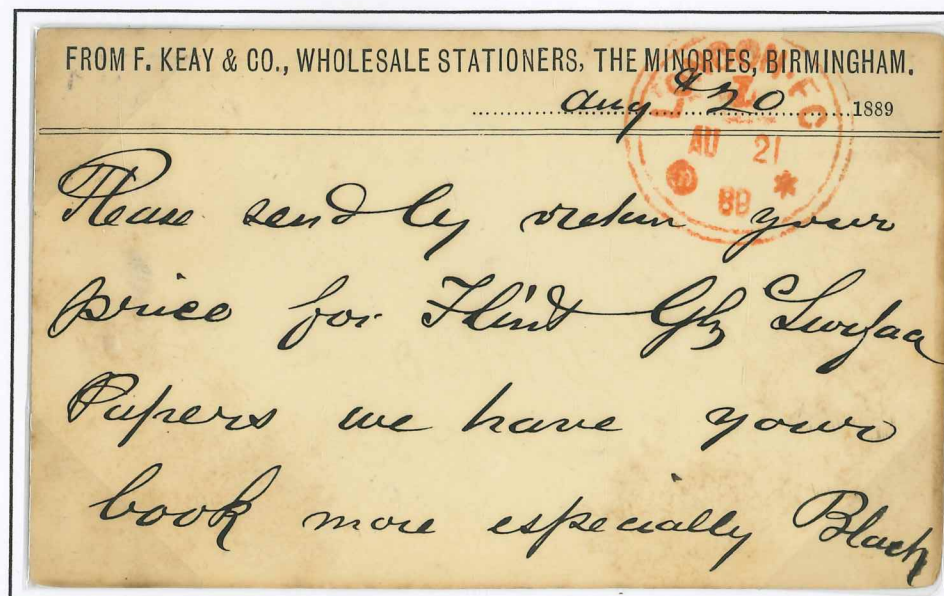
Hoster Modified Backstamp. Used example dated 20th August 1889.

½ d single-weight postcard rate for domestic mail. Queen Victoria ½ d Postal Stationary Card.



F Keay & Co., Wholesale Stationers, The Minories, Birmingham postcard dated Birmingham 20th August 1889

Hoster Backstamp



Hoster Modified Die used as backstamp always in red, die 7, stars either side of year. Dated 21st August 1889

London EC "AU 21 89" with stars either side of year.

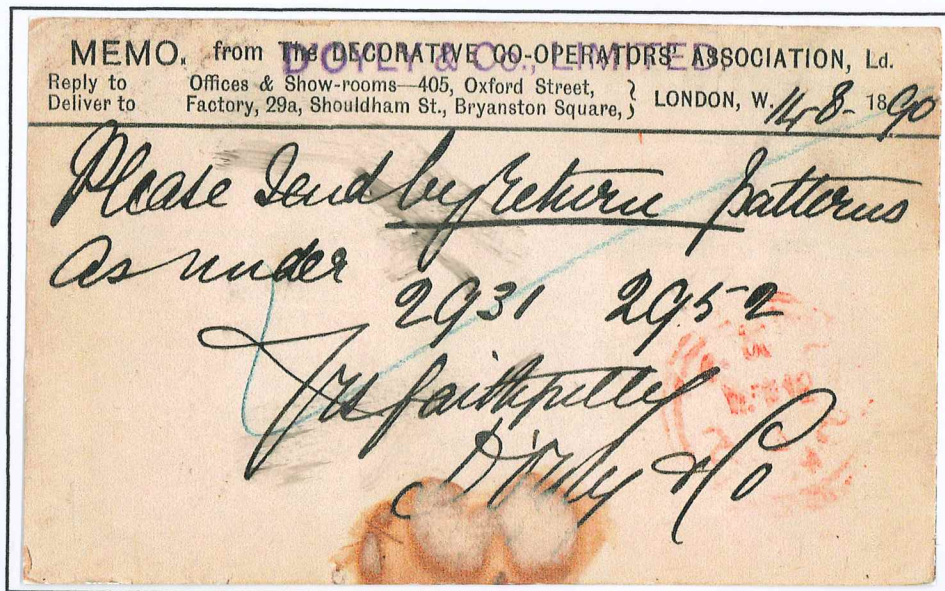
**LONDON HOSTER CANCELLATIONS
1882 - 1893**

HOSTER MODIFIED DATE DIE

Used for Backstamp or Receiver Mark, from 1888

Hoster Modified Backstamp. Used example dated 15th August 1890.

½ d single-weight postcard rate for domestic mail. Queen Victoria ½ d Postal Stationary Card.



The Decorative Co-Operators Association, Ltd. postcard dated London W. 14th August 1890

Hoster Backstamp



Hoster Modified Die used as backstamp always in red, die 7, stars either side of year. Dated 15th August 1890
 London EC "AU 15 90" with stars either side of year.

LONDON HOSTER CANCELLATIONS 1882 - 1893

HOSTER MODIFIED DATE DIE

Used for Backstamp or Receiver Mark, from 1888

Hoster Modified Backstamp. Used example 31st July 1889.

1d single-weight letter rate for domestic mail. Queen Victoria 1d Postal Stationary Card



Envelope sent from Bedale 60. to 21 Mincing Lane, London EC. Dated 31st July 1889.

Hoster Backstamp



Hoster Modified Die used as backstamp always in red, die 7, stars either side of year. Dated 1st August 1889
London EC "7 AU 1 89" with stars either side of year.