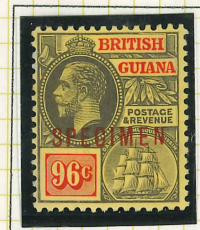


1913-21

Perf. 14

Wmk. Mult. Crown CA



**SPECIMEN** copies of all the Wmk. Mult. Crown CA stamps.  
 All overprinted in black except the 48 cents and the 96 cents on  
 pale yellow paper, which were printed in red.

1913-21

Perf. 14

Wmk. Mult. Crown CA



Some plate blocks from the 1913-1921 Mult Crown CA set.



A Plate 1 corner block of four of the 1 cent yellow-green.



A Plate 1 corner block of four of the 2 cents carmine with a sheet number.



A Plate 2 corner block of four of the 2 cents scarlet.



A Plate 2 corner block of four of the 4 cents brown and bright purple.

Some more plate blocks from the 1913–1921 Mult Crown CA set.



A Plate 1 corner pair of the 5 cents bright blue.



A Plate 2 corner block of four of the 5 cents bright blue.



A Plate 1 corner block of four of the 6 cents grey and black.



A Plate 1 corner block of four of the 12 cents orange and violet.



A Plate 2 corner block of four of the 12 cents orange and violet.

Some more plate blocks from the 1913-1921 Mult Crown CA set.



A Plate 1 corner block of four of the 24 cents dull purple and green with Sheet Number '034'



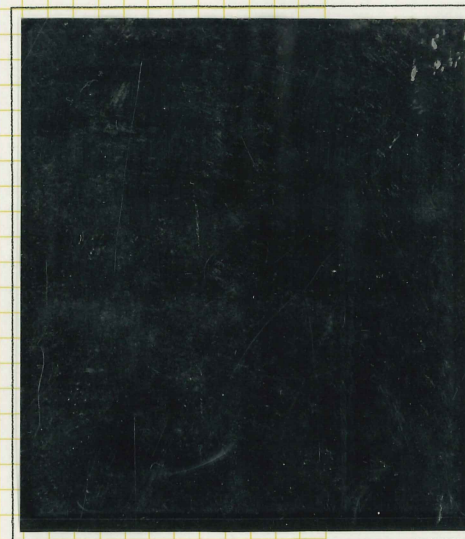
A Plate 1 corner block of four of the 48 cents grey and purple-brown with Sheet Number '007'.



A Plate 1 corner block of four of the 60 cents green and rosine.



A Plate 1 corner block of four of the 96 cents black and vermilion/yellow with Sheet Number '116'.



A Plate 2 corner block of four of the 60 cents green and rosine.

1921-27 Perf. 14 Wmk. Mult. Script CA



**SPECIMEN** copies of all the Wmk. Mult. Script CA stamps. The 1c, 2c carmine, 4c, 6c, 12c, 24c and 72c overprinted in black with Samuel Type D12. The 2c violet, 48c, 60c and 96c overprinted with Type D16, the 48 cents and the 96 cents, being printed in red.

1921-27 Perf. 14 Wmk. Mult. Script CA



Plate Blocks from the 1921-27 issue, watermarked Mult Script CA.



1 cent green, Plate 1, showing Sheet No. '078'.



1 cent green, Plate 2.



2 cents rose-carmine, Plate 1.



2 cents rose-carmine, Plate 2.





2 cents violet, Plate 1, showing Sheet No. '059'.



2 cents violet, Plate 2.



4 cents brown and bright purple, Plate 1, showing Sheet No. '083'.



4 cents brown and bright purple, Plate 2.



6 cents bright blue, Plate 2.



12 cents orange and violet, Plate 1,  
showing Sheet No. '068'.



12 cents orange and violet, Plate 2.



A Plate 1 pair of the 24 cents  
dull purple and green;  
this plate is not recorded by  
Townsend & Howe.



24 cents dull purple and green, Plate 2.