

# British Guiana

1889

In 1889 a new design appeared; it was in many ways similar to the previous one, still incorporating the sailing ship and the motto of the Colony.

Proof strike of De La Rue 'POSTAGE & REVENUE' 1 CENT duty plate as used for SG193 and following issues – a pull on stiff card. Though devoid of progress handstamps or verifying initials, this is taken to be the finished product.



The basic set of ten overprinted 'SPECIMEN' (Samuel Type D12)

1889

Perf. 14

Wmk. Crown CA



The mint set showing, in the case of the 4 cents 12 cents and 72 cents, the very slight variations in the colour of the duty printing. These variations are listed in Gibbons Catalogue.

1889

Perf. 14 Wmk. Crown CA

Plate 1 block of 4  
of the 1 cent dull purple  
and slate-grey.



Plate 1 and 2 blocks of 4  
of the 2 cents dull purple  
and orange.



Plate 1 and 3 blocks of 4  
of the 4 cents dull purple  
and ultramarine.



1889

Perf. 14

Wmk. Crown CA

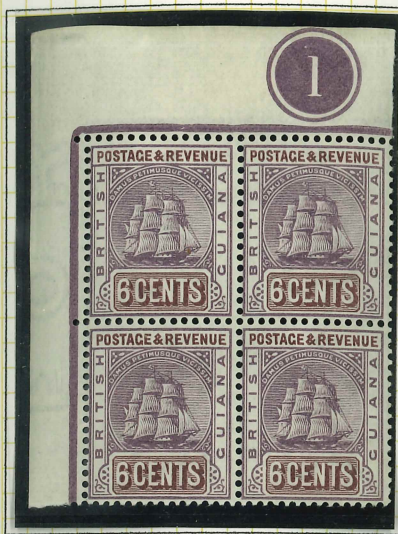


Plate 1 blocks of 4 of the 6 cents dull purple and maroon and the 8 cents dull purple and rose.



Plate 1 and 2 blocks of 4 of the 12 cents dull purple and mauve.

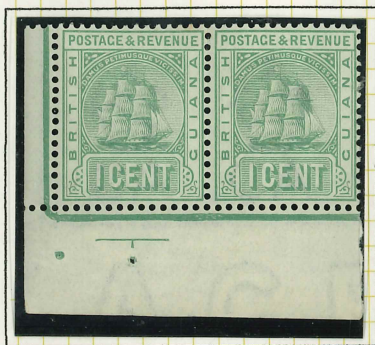


Plate 1 block of 4 of the 24 cents dull purple and green.

1890-91 Perf. 14 Wmk. Crown CA



Overprinted SPECIMEN



The effect of water on fugitive ink is evident in these two examples.



1900

Perf. 14

Wmk. Crown CA



The set of six overprinted SPECIMEN.



1900

Perf. 14

Wmk. Crown CA

Some plate blocks from the 1900 Crown CA set.



Plate 3 block of 18 of the 2 cents dull purple and carmine.



A Plate 3 block of 4 of the 2 cents dull purple and black on red.

1900

Perf. 14

Wmk. Crown CA

Some more plate blocks from the 1900 Crown CA set.



A block of fifteen of the 6 cents from the top right corner of the sheet showing the Plate 3 number. Townsend & Howe say that they had seen 'no example of this stamp with this plate number'.



A Plate 3 block of four of the 48 cents grey and brown.



1905-07 Perf. 14 Wmk. Mult Crown CA



1905-07 Perf. 14 Wmk. Mult Crown CA



Plate 4 block of 6  
of the 1 cent grey-green.



Plate 4 block of 4 of the 2 cents  
purple and black/red.



Plate 4 block of 4 of the 24 cents  
dull purple and green.



Plate 4 block of 4 of the 72 cents  
dull purple and orange-brown.

1907-10

Perf. 14

Wmk. Mult. Crown CA

In 1907 some values of the previous set of stamps were reissued in different colours, the 1 cent (½d), 2 cents (1d) and 5 cents (2½d) conforming to the UPU standard colours of green, red and blue.



Overprinted SPECIMEN.



1907-10 Perf. 14 Wmk. Mult. Crown CA



A Plate 4 corner block of four of the 1 cent blue-green.



A Plate 4 marginal block of four of the 2 cents rose-red.



A Plate 4 corner block of four of the 4 cents brown and purple.



A Plate 4 corner block of four of the 5 cents ultramarine.

1907-10 Perf. 14 Wmk. Mult. Crown CA



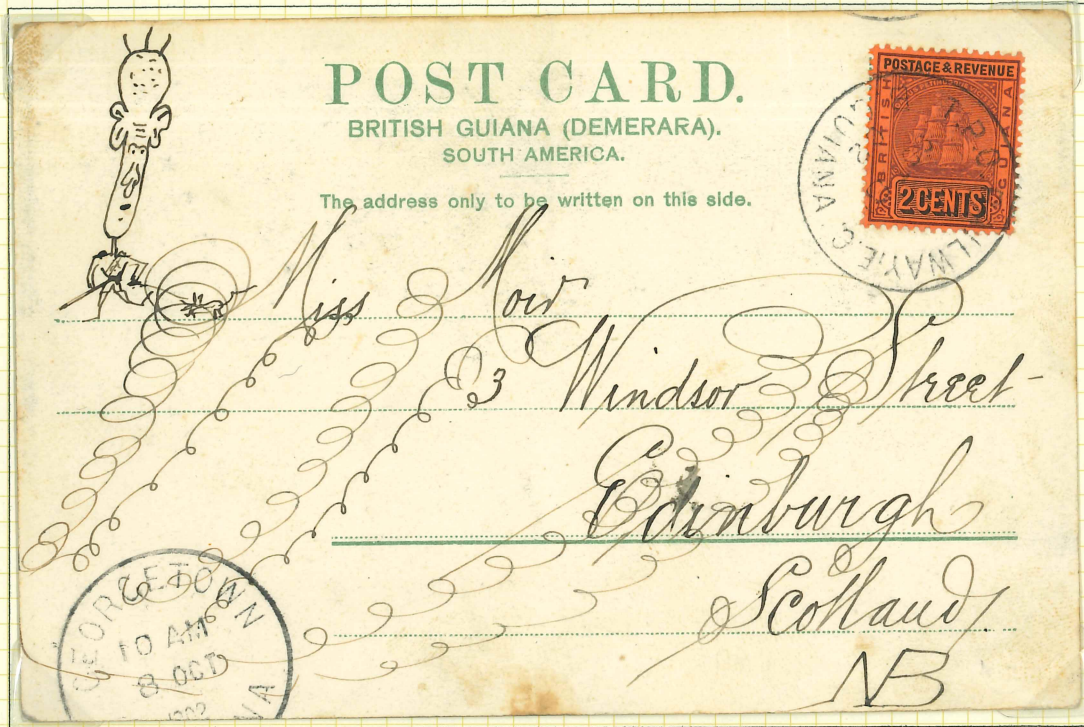
A Plate 4 corner block of four of the 6 cents grey and black.



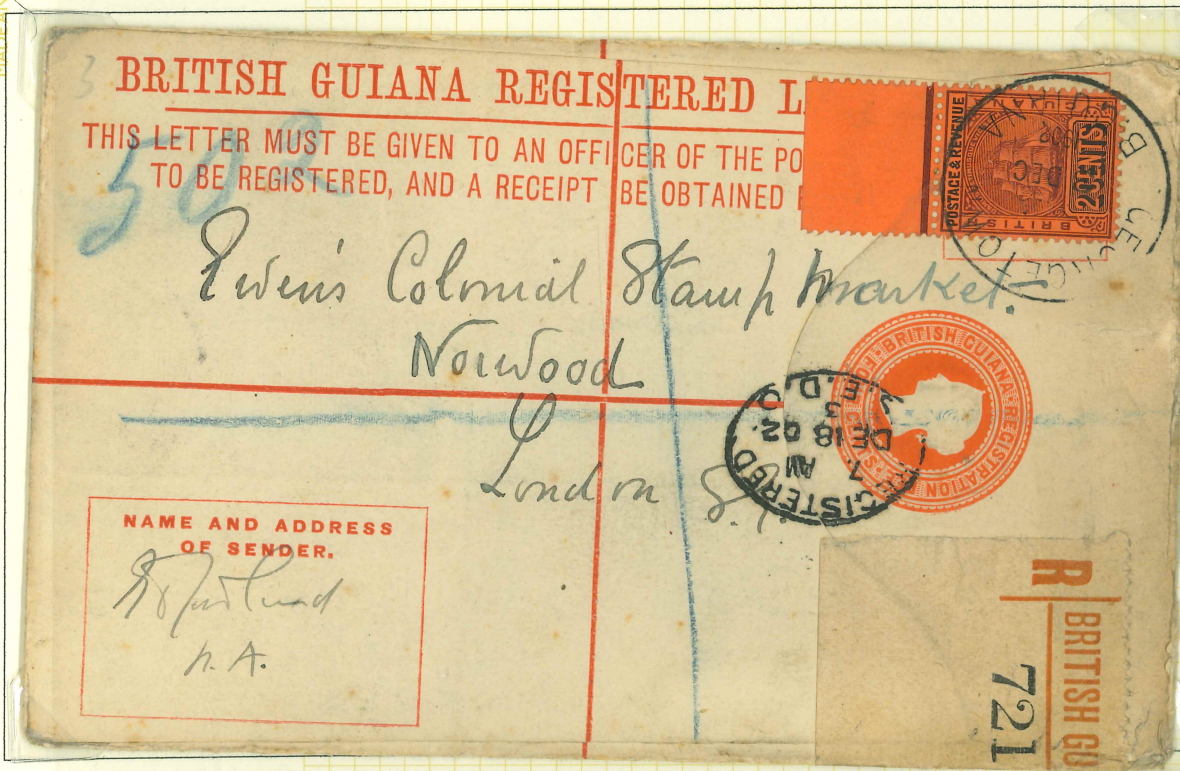
A Plate 4 corner block of four of the 12 cents orange and mauve.

1900

Perf. 14 Wmk. Crown CA



8 October 1902, a picture postcard to Edinburgh bearing a 2 cents dull purple/black tied by a 'T.P.O. RAILWAY E.C.' postmark.

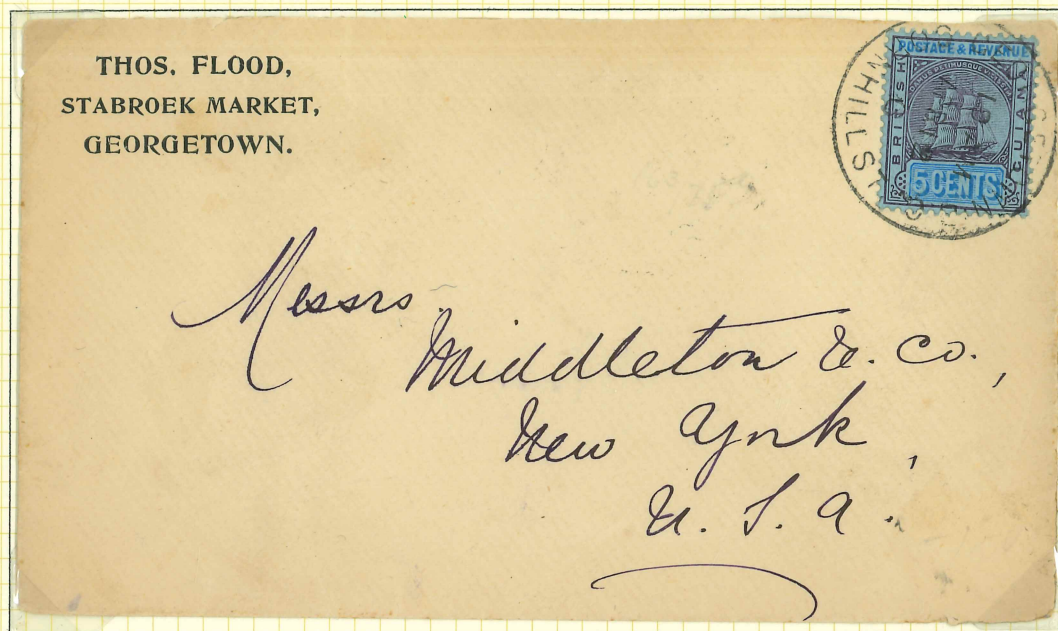


18 December 1902, a 4 cents registered envelope bearing an additional 2 cents tied by a Georgetown single ring postmark.

1905-07

Perf. 14

Wmk. Mult Crown CA



12 April 1906, a cover to New York franked with a 5 cents dull purple and blue/blue tied by a 'CORNHILL ST' datestamp.



31 January 1912, a picture postcard to Indiana, USA franked with a 2 cents rose-red.