



CANTON

(FOR CORRESPONDENCE POSTED AT THE FRENCH POST OFFICES)

1901. Stamps of Indo-China overprinted CANTON 州廣 in red. Perf.



Black on azure

Green

TCHONGKING—continued

1908. Centre and value in black. Perf. Overprinted in red or blue  
With TCHONGKING and Chinese characters (various) below



Green



Violet

With TCHONGKING and Chinese characters (various) above



Orange (in blue)

Lake (in blue)

Green

Blue

Violet

1918. Stamps of 1908. Surcharged in black or blue



65

66

67

1125





# HOI-HAO

An Indo-Chinese P.O. in China, closed in 1922.

## 1901. Stamps of Indo-China overprinted HOI HAO 州瓊 in red



Black on azure

15 c.  
Blue



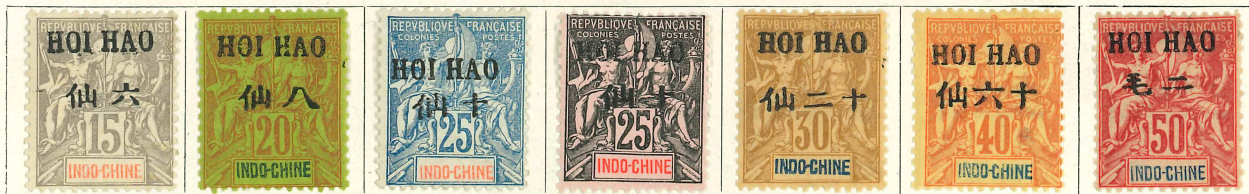
75 c.  
Brown on orange

1 fr.  
Olive-green

## 1903-4. Overprinted in black. Chinese characters various



5 fr.  
1



50 c.  
Brown on azure

5 fr.  
Lilac

# HOI-HAO

## 1906. Overprinted Chinese characters various

花銀八厘

Stamps as 1901



44

47

Perf.



32

Claret on yellow

HOI-HAO—continued

1906—continued



1908. Centre and value in black. Perf. Overprinted in red or blue  
With HOI HAO and Chinese characters (various) below



Green

Violet

With HOI-HAO and Chinese characters (various) above



Orange (in blue)

Lake (in blue)

Green

Blue

Violet

1918. Stamps of 1908. Surcharged in black or blue

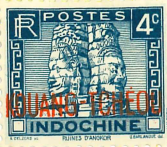
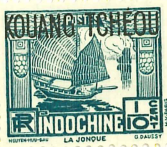


72

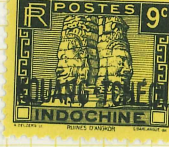
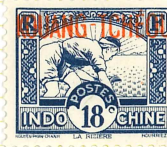
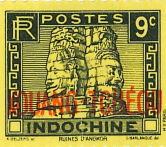


70b Chinese 2 for 4

1227 definitive SG 28/118



1241/2 definitive SG 126/37



122 or Black Opt.

KIONGA *Part of German E. Africa*

1916. Stamps of Lourenço Marques surcharged in red

<p>1 c. on 100 r., blue</p>	<p>1 c. <b>REPUBLICA KIONGA</b> on 100 r., blue</p>	<p>"5 c." on 100 r., blue</p>	<p>"5 c." on 100 r., blue</p>
-------------------------------------	---	---------------------------------------	---------------------------------------

(Kwangchow)

KOUANG TCHEOU

*An area and part of S. China*

*leased by France from China April 1898. It was returned Feb 1943.*

(FOR CORRESPONDENCE POSTED AT THE FRENCH POST OFFICES)

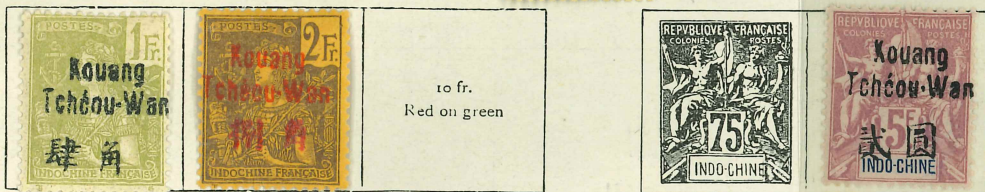
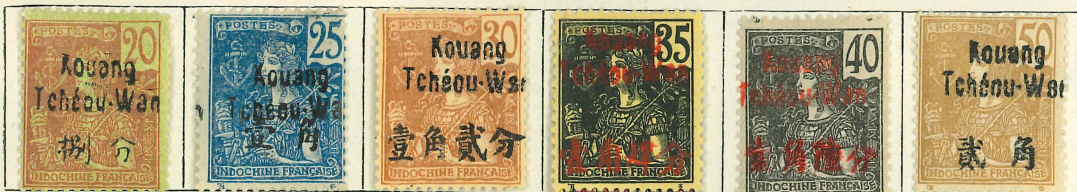
Stamps of Indo-China overprinted. Perf.

1906. With **Kouang Tchéou-Wan** Chinese characters various

壹銀八厘

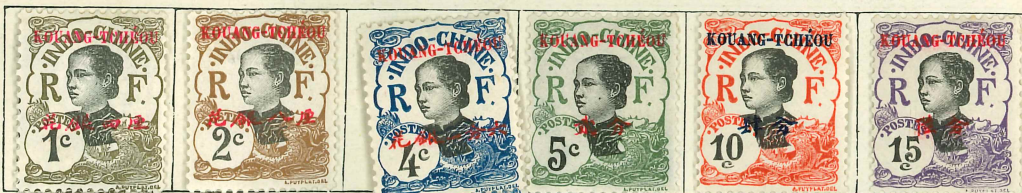


Claret on yellow



Brown on orange (in red)

1908. Centre and value in black. Perf. Overprinted in red or blue  
With **KOUANG-TCHEOU** and Chinese characters (various) below



Green



Violet



1908—continued

With KOUANG-TCHEOU and Chinese characters (various) above



Orange (in blue) Lake (in blue) Green Blue Violet

36

1918. Stamps of 1908. Surcharged in black or blue



35

39



42

44

46

42-44  
Cancelled top of 4.



47

50

1923. As 1908. Values in "cents" and "piastres." Centres in black or red (1/2 c.)



52/72



KOUANG TCHEOU—continued

1923—continued



1927. Contemporary stamps of Indo-China overprinted KOUANG-TCHEOU in red or black



73/96



89

92



121/5 (1939)



11647



119/26

Mong-Tseu

1906. Overprinted

Chinese characters various

花銀八厘

Stamps as 1903

Perf.



29

32



17

18 Claret on yellow

19

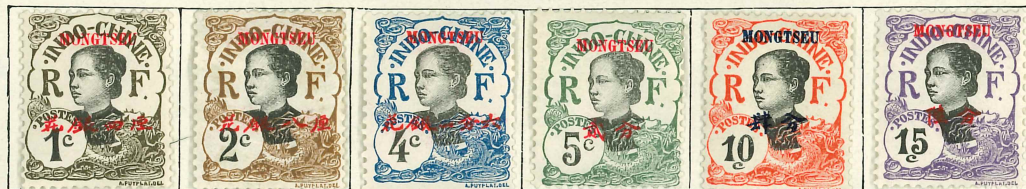


28

31

10 fr.  
Red on green

1908. Centre and value in black. Perf. Overprinted in red or blue  
With MONGTSEU and Chinese characters (various) below



33/51

Green



41 Violet

With MONGTSEU and Chinese characters (various) above



Orange (in blue)

Lake (in blue)

Green

Blue

Violet

MONG-TSEU—continued


1919. Stamps of 1908. Surcharged in black or blue



Office closed 31 Dec 1922.

MONTENEGRO

1874. Perf.

2 nov. Yellow	3 n. Green		5 n. Red	7 n. Lilac	7 n. Violet	7 n. Rose
------------------	---------------	---	-------------	---------------	----------------	--------------

1893. As last, overprinted in red

10 n. Blue	15 n. Bistre	25 n. Slate	25 n. Brown	1992 1993 Иштампарце on 10 n., blue	15 n. Bistre	25 n. Brown-lilac
---------------	-----------------	----------------	----------------	--	-----------------	----------------------

In black

9 n. Yellow	3 n. Green	5 n. Red	7 n. Lilac	7 n. Rose	10 n. Blue	10 n. Bistre
----------------	---------------	-------------	---------------	--------------	---------------	-----------------





PAK-HOI

1906. Overprinted

Chinese characters various

花銀八厘

Stamps as 1903

Perf.



29

32



17

Claret on yellow

19



20

21

25



28

1908. Centre and value in black. Perf. Overprinted in red or blue  
With PAKHOI and Chinese characters (various) below



34/50

37

Green

39



40

Violet

With PAKHOI and Chinese characters (various) above



Orange (in blue)

Lake (in blue)

Green

Blue

Violet

PACKHOI—continued

1918. Stamps of 1908. Surcharged in black or blue



51

53



60 w



59

60

61



63

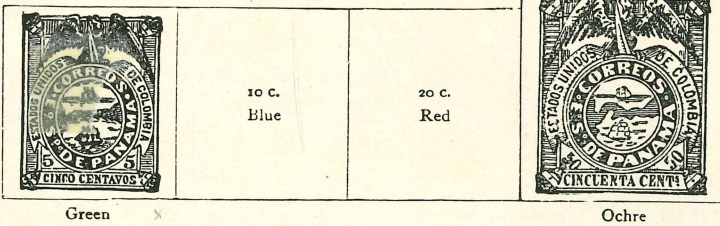
64

1846

PANAMA

I. ISSUES UNDER COLOMBIAN GOVERNMENT

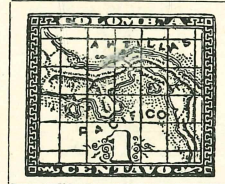
1878. Perf.



Green

Ochre

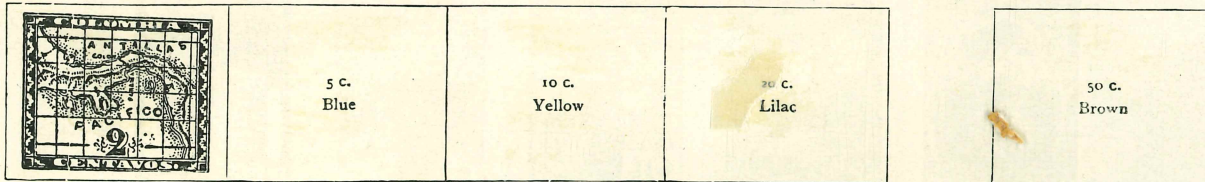
1887. Perf.  
Black on coloured paper



5

Green

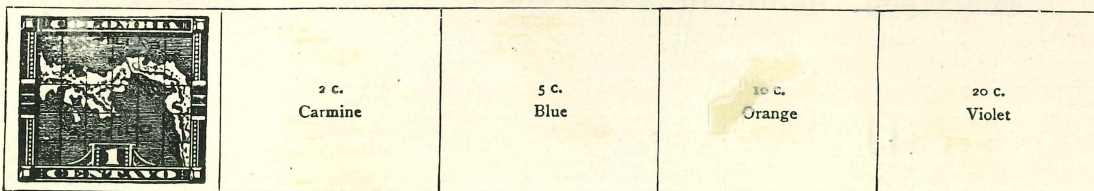
Colour on white



6 w

Pink

1892. Perf.



12 w

Green

b

c

12 d

12 e



# YUNNAN-FOU

(Formerly YUNNAN-SEN) *now Kunming.*

(FOR CORRESPONDENCE POSTED AT THE FRENCH POST OFFICES)

## YUNNANSEN

1903. Stamps of Indo-China overprinted Chinese characters various

### 仙四

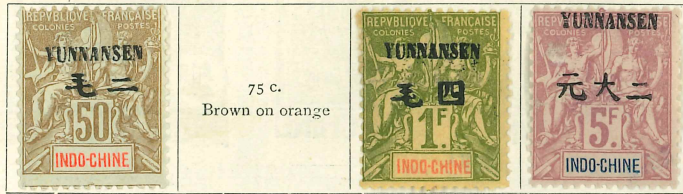


1 Black on azure



25 c. Black on rose

50 c. Carmine on rose



75 c. Brown on orange

## Yunnan-Fou

1906. Overprinted Chinese characters various

### 花銀八厘

Stamps as 1903

On 1904 issue of Indo-China



28

31



16



20 Broken Y x O

22

24

25



25

26

27

29

30

32

YUNNAN-FOU—continued

1908. Centre and value in black. Perf. Overprinted in red or blue  
With YUNNANFOU and Chinese characters (various) below



Green



Violet

With YUNNANFOU and Chinese characters (various) above



Orange (in blue)

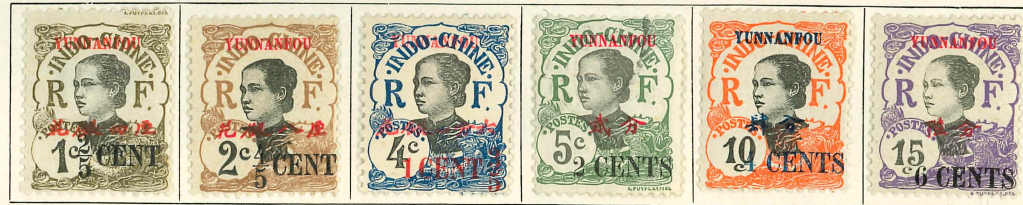
Lake (in blue)

Green

Blue

Violet

1918. Stamps of 1908. Surcharged in black or blue



50

55



57

61



62

63

64

65

1763