

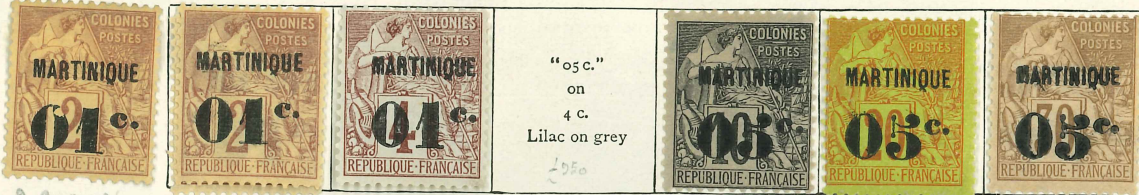
MARTINIQUE

French Colonial stamps, "Commerce" type, surcharged. Perf.
1886

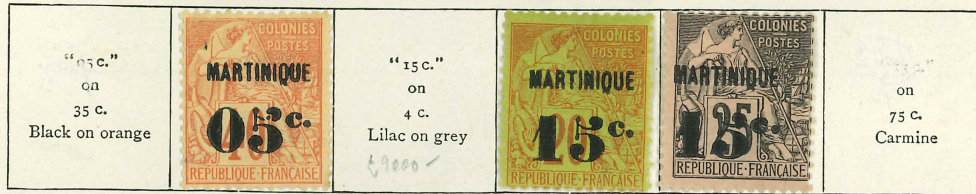


1 (A) Red on green 3 4 5 6 Red on green 7 Red on green

1888



2 Broken 9/16. 9 10 11 12 13 14



15 15a 16 17 18 19 20

1891-92



28 Brown on buff 30 31 29 32

1891. French Colonial Postage Due stamps surcharged. Imperf.
In red In black



21 Tilted 5 Variety 25 (No. 19 a & 20) (to c.) Black 26 27 21 22 24

1892. Perf. Name in red or blue



Black on azure



41 42

MARTINIQUE—continued

1900. As 1892. Colours changed and new values



51 52

1904. Stamps of 1892 surcharged



56

61

1906. As 1900



54

53

30

1908. Centre in purple-brown. Perf.



62

Red

64

63



Blue

71

72



74

1908—continued



Blue

78

1915. As 1909. Surcharged in red



1922. As 1908

1917. Perf.



15 c., lilac and carmine

1912. Stamps of 1892 surcharged in black or red



79 B

79 A

411. A' narrow 1/2 x 2 mm.

1920. As 1908. Surcharged



846

86



87/8



93

1922-3. As 1908. Surcharged in black, blue, or red



109/11

1924. As 1908. Surcharged in red



115

117/117a

120/120a

MARTINIQUE—continued

1924-27. As 1908



89



94



93



Same types. Surcharged in black, blue or red



104

105



121/3



113



114



124



125



128



129

MARTINIQUE—continued

1928-30. As 1924-27



91

102

103

106/8

1931. Colonial Exhibition stamps. As Camerouns but overprinted "MARTINIQUE"



130/3

1933. Perf.



104

107

Bronze-green

109

142



132

156

167

172



135

138

140

143

Green



147



144

148

150

151



D.74/84



186



180/5



187/8



EXPOSITION INTERNATIONALE



ARTS ET TECHNIQUES

1937



D. 130/20