

1934. Stamps of 1930 overprinted

1 9 2 4-24 Dhetuer-4 1 q., black	1 9 3	2 q. Vermilion	5 q. Green	10 q. Carmine	15 q. Brown	25 q. Blue	50 q. Grey-green	1 fr. Violet
--	-------------	-------------------	---------------	------------------	----------------	---------------	---------------------	-----------------

302/11

2 fr. Deep blue	3 fr. Deep olive
--------------------	---------------------

D 204/7 (1923)

D 288/31 (1920)

26562

ALEXANDRIA

Egyptian Port, closed 31 March 1931.

(FOR CORRESPONDENCE POSTED AT THE FRENCH POST OFFICES)

1899. French stamps overprinted "ALEXANDRIE" in various colours. Perf.



Black on azure

5 Deth

7

9

8 Type B. II

1. Letter of N of INV under B

2. ———— U

6 (b)

ALEXANDRIA—continued

1899—continued



50c
b

15

16

17

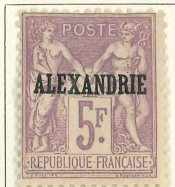
16

17

1902-13. Perf.



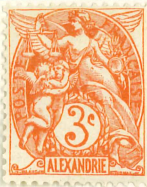
19 a



18



19 Grey



23



24



Carmine



Red and blue



32



34



As 1902-6. Surcharged

1915

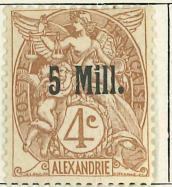
1921



37



38



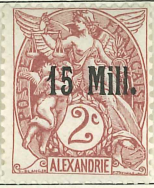
40



43



45



47



49



49



50

"150 m."
on
5 fr., blue and yellow



PORT SAID

(FOR CORRESPONDENCE POSTED AT THE FRENCH POST OFFICES)

1899. Stamps of France, 1876-1900, overprinted in red, blue, or black. Perf.

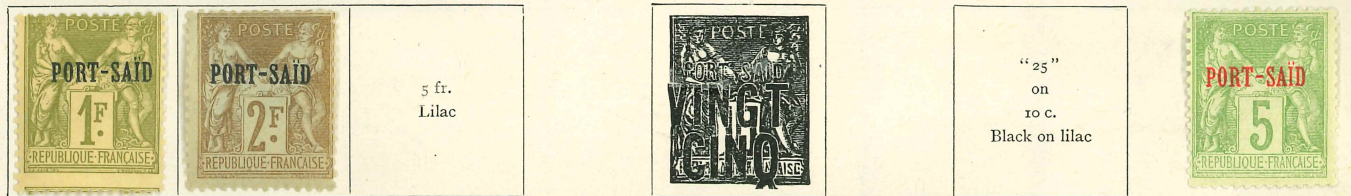


Type a 105 Type a 107 108 Type B.



109/ 110

1899. As last, surcharged in red
With words, as last, and figures "25"
in addition



114 117 118 121 Black on lilac 119 106 Type b No figure x

1902. Perf.



124 a Grey 126 126 a 128 a



Carmine 128 Red and blue



136 137 DARK SHADE!

1915. As last. Surch. in red

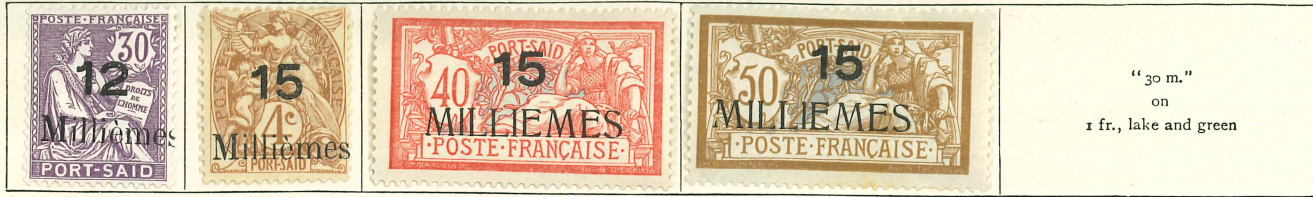
1921. Stamps of 1902. Surcharged



138 141 143 170

PORT SAID—continued

1921—continued

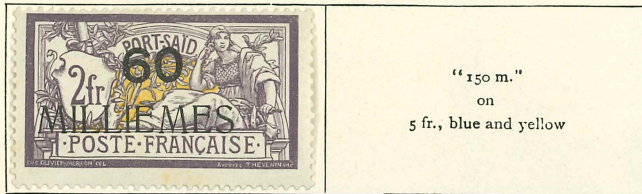


144/50

147

148

"30 m."
on
1 fr., lake and green



149

150

"150 m."
on
5 fr., blue and yellow

Surcharge changed



152

153

156



157

158

160

162

163

1921. As 1902
Colour changed

1922. As 1921 (surcharged as 2nd issue)



155



159



161



160



161



163

1925. As last, but old value obliterated



164



174



177



177



177



177



181



182



1927-29. Surcharged in blue or black

1927-28. Types as 1902, but values in milliemes. Perf.



10/4



185/90



190



166 a



169 1921
x64

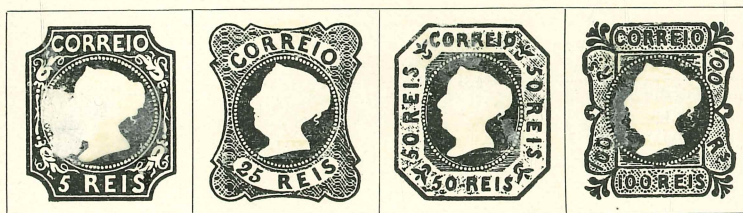
+1501

The French P^os in both Alexandria & Port Said closed on the 31st March 1931.

PORTUGAL

I. MONARCHY

1853



Brown

5/2

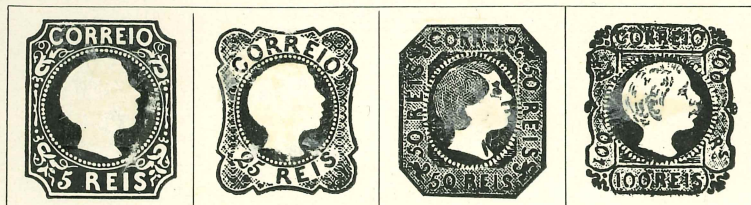
Blue

Green

Lilac

1855. Straight hair

Curly hair



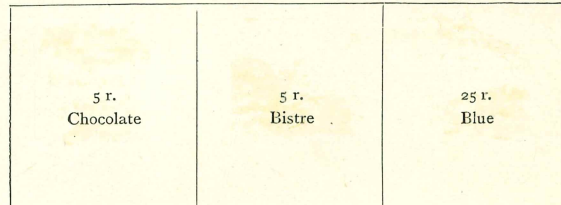
Chocolate

12/11

Blue

14 Green

Lilac



5 r.
Chocolate

5 r.
Bistre

25 r.
Blue

16

20/21