

1892. Perf. Name in red or blue



Black on azure



1900. Colours changed



1904. Surcharged



1906. Perf.



Grey



Black on blue



Black on azure



IVORY COAST—continued

1912. Stamps of 1892 surcharged in black or red



41B/A None & narrow spacing. 38A - all narrow.
38 B/A

39 B

1913. Centre in first colour. Perf.



43/59

44 Black and brown

46



47 Rose & orange red

50



52



57

58

59

1915. As 1913
Surcharged in red

1916-22. As 1913



60/60a Double overprint



61/79



62



67

1922-27. Surcharged in black or red



64



65



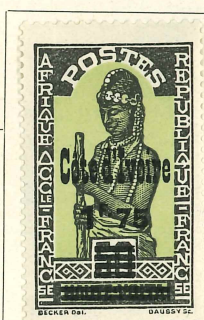
66

IVORY COAST—continued

1933. Upper Volta stamps of 1923. Surcharged or overprinted only



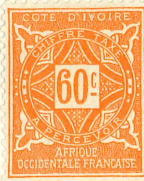
98/119



P32



73



D60/7 (1915)



155/60 (1937)



D945



P24/23



P25



1719



155/60



P27

IVORY COAST—continued

599

1922-27—continued



87

88

84

85



88

89

91

19. 4-27. As 1913



72

93



75



82

81

50/45 52 80

1931. Colonial Exhibition stamps. As Cameroons but overprinted "CÔTE D'IVOIRE"



UPPER VOLTA—continued

1199

1920-28—continued



23

13



25

1922-28. As last. Surcharged in black, blue or red



27

30/34



1928. Perf.



40/62

Chocolate and lilac

43

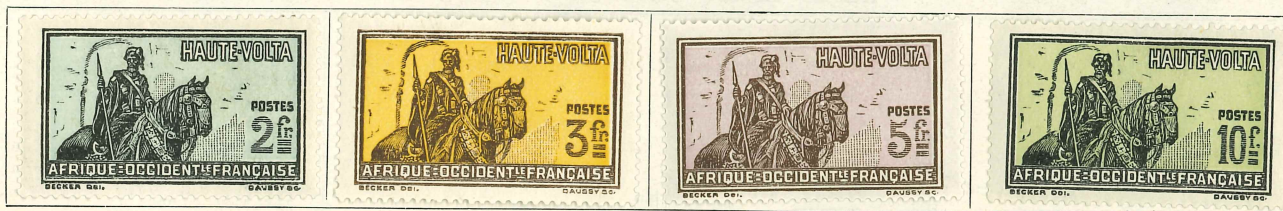
45

UPPER VOLTA—continued

1928—continued



Chocolate and blue



Black and blue



1931. Colonial Exhibition stamps. As Camerons but overprinted "HAUTE-VOLTA"

