

57b 8 invert.



57a or invert & cancel.



D 8

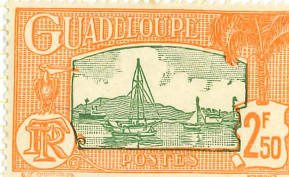
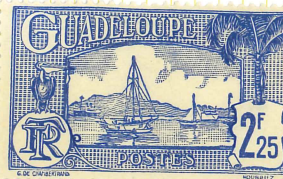
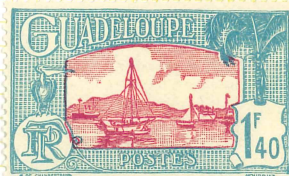
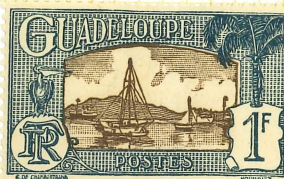
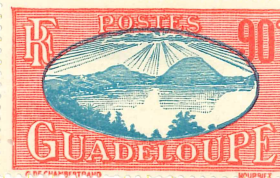
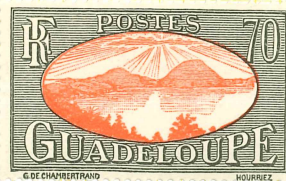
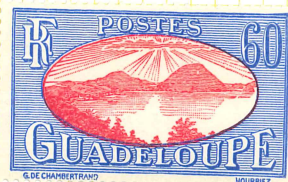
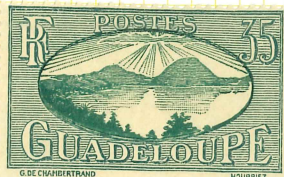


D 14



D 105/6





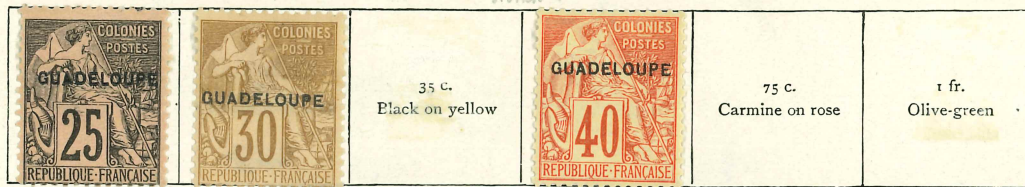
Complete set 105/46



D 63/70

# GUADELOUPE—continued

1891. "Commerce." Overprinted "GUADELOUPE"

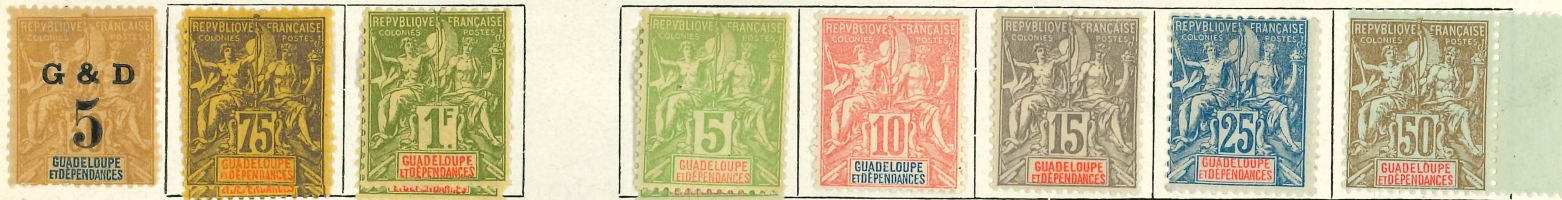


"Ceres" type, large figures  
Similarly overprinted

1892. Perf. Name in red or blue



1901. Colours changed



1902-3. Provisionals. Various types of each surcharge and overprint  
Stamps of 1892 surcharged

As last, overprinted in red, blue, or black



1905. Perf.



GREECE—continued

461

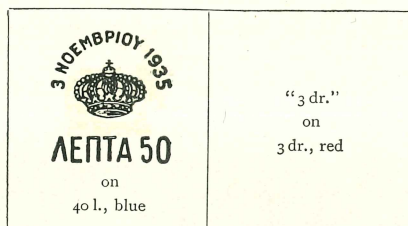
1935. Surcharged in *brown or blue*

Postage due stamps

*Rouletted*

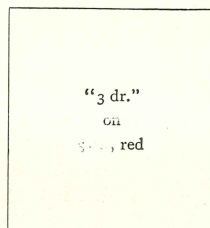
*Perf.*

Postage stamps of 1935



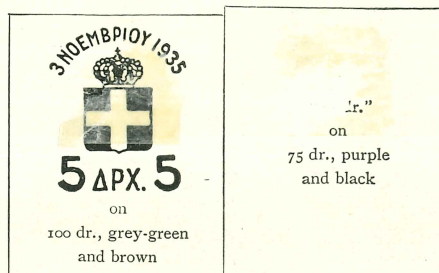
"3 dr."  
on  
3 dr., red

489



"3 dr."  
on  
3 dr., red

491



"1 dr."  
on  
75 dr., purple  
and black

492

521 (1938)

494s

073A

C 405

C 342

C 342

C 343

E 6196

GUADELOUPE AND DEPENDENCIES

*West Indies between  
Antigua & Dominica.*

French Colonial stamps, various types, surcharged  
"Peace and Commerce." Imperf. "Commerce." Perf.  
1884 1889



6 No gum

6 Cinnamon x

7



11/10 red on green

Larger centimes

1890



11

12 Red on yellow

13

14



15/16

Olive-green

GUADELOUPE—continued

1928—continued



131

132 Green and scarlet

134

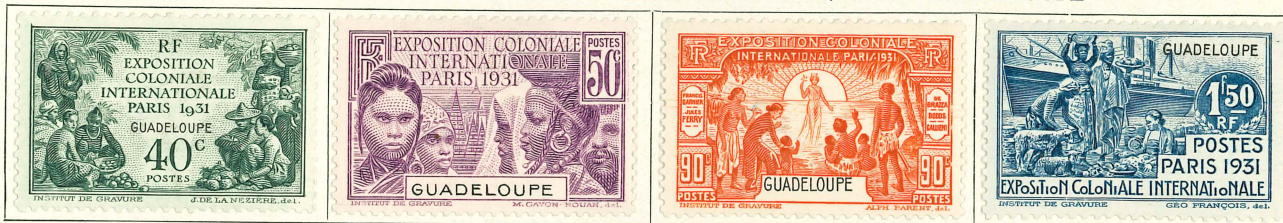
140



142

146

1931. Colonial Exhibition stamps. As Camerouns but overprinted "GUADELOUPE"



147/50

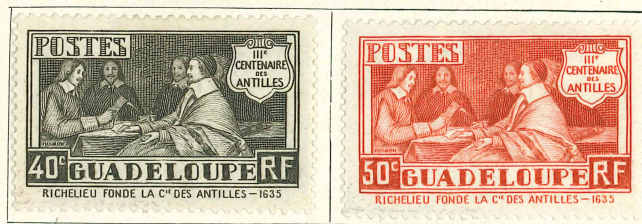
1933. As 1928



133

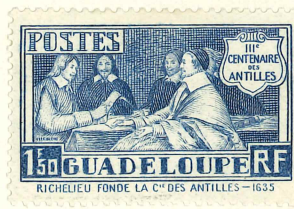
138

1935. Perf.



151/6

Sepia



Magenta



147/50, 1928



147/63

GUADELOUPE—continued

463

1905—continued



64

Carmine

67



69

Black

71



72

Black on green

73

1912. Issue of 1892 surcharged in red or black



76

77



79a

1914. Stamps of 1905 surcharged  $\text{+}5^{\text{c}}$  in red



Carmine

82

1922. As 1905



83/84

1924-27. Surcharged in blue, red or black



88

95/104



97

98

99

GUADELOUPE—continued

1924-27—continued



100 101 102 103

1925-27. As 1905



104 35 Scarlet on azure 36 Olive on lilac



92 74 Blue

1928. Perf.



105/41 Set complete 108 109 Scarlet and black



110 112 113



117



122 124 Blue-green and carmine 126 128