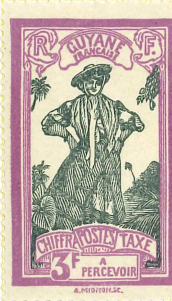




Q 160/8





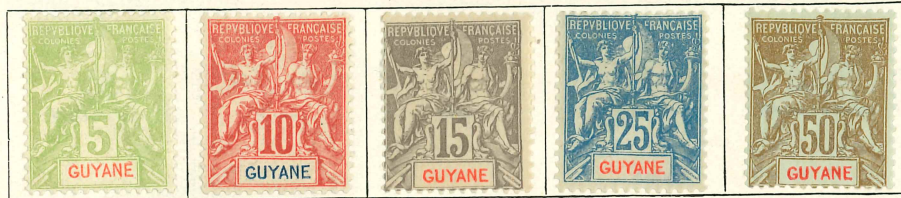
D117/28



1892-1900—continued



1900. Colours changed



1904. Perf.



Black



Black



Rose

Stamps of 1892-1900 surcharged in black or red



74 b  
74/50 A narrow space.  
Wide space.

1915. Stamps of 1904 surcharged in red



1922. As 1904. Surcharged in various colours



75 b

77 b

74 b

78 b

# FRENCH GUIANA—continued

1922. Same types. New colours



93/5 (5 c.) orange

Carmine

1924. As 1904. Surcharged in blue

1924. New values. Perf.



93/4



49/6 (10 fr.) green on yellow

1925-27. Same types. Surcharged in black or red



1925-28. As 1904

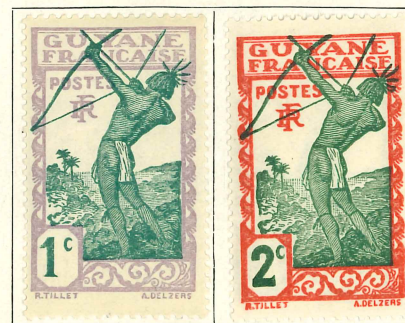


104/6



107

1929. Perf.



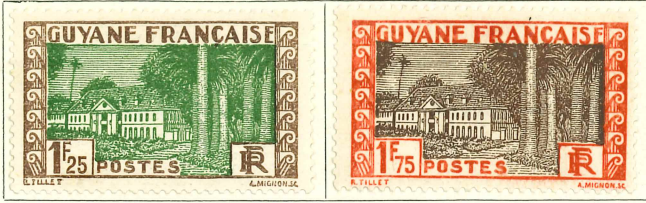
117/59

Blue-green and carmine

FRENCH GUIANA—continued

1933. As 1929. New values

1933. Air stamps. Perf.



Red-brown



1935. Perf.



Sepia



Carmine



Complete set of 43.

1929—continued



120

119

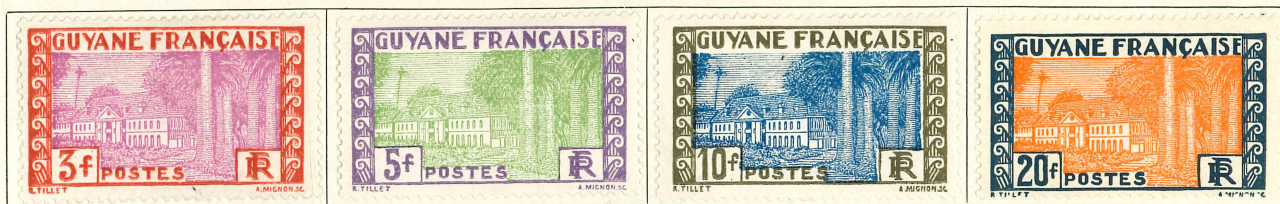


Chocolate and yellow-green



Sage-green and vermillion

145



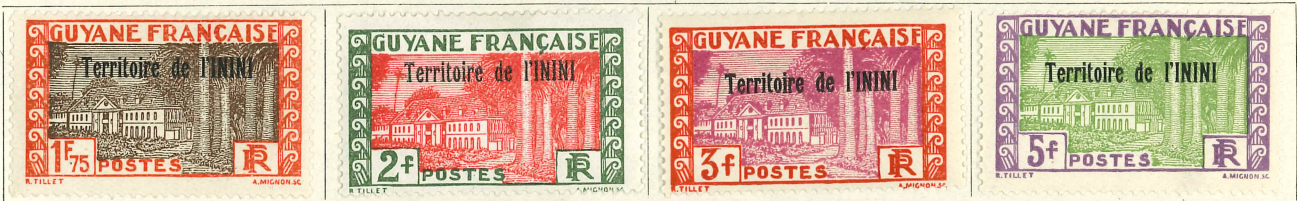
159

1931. Colonial Exhibition stamps. As Camerons but overprinted "GUYANE FRANÇAISE"



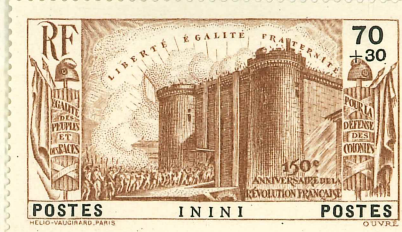
160/3

1932-33. Stamps of French Guiana, 1929, overprinted



51/2 (1939)

1/20 complete

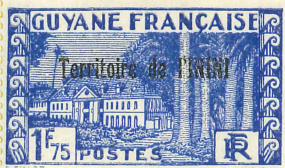


53/7 (1939)



L241





D 41/9  
(1932)

