

1899-1900. 2nd Issue lithographs
in Original colours

Imperf.

B071

Stone a

Bateman

MONOGRAM Type B

Wove Paper

1/4 Anna Deep Slate-Violet

Bateman 152
(Lake)



Bateman 147



B072

Stone b

1/4 Anna Pale Slate-Violet

Bateman 149 (Blue)

Bateman 150 (Rose)

Bateman 151 (Nauve)

Bateman 152 (Lake)

Bateman 153 (Bottle Green)



B078

Pir-Proof

Bateman 164 (Blue)

Bateman 165 (Rose)

Bateman 166 (Nauve)

Bateman 167 (Lake)



1899-1900. 2nd Issue lithographs
in Original colours

MONOGRAM Type B

BU 73 Imperf.

Stone a

1/2 Anna Deep Blue

Laid Paper

unrecorded (Mauve)

Bateman 157 (Lake)



thick laid

Medium laid

Medium laid

BU 74

Stone b

1/2 Anna Pale Blue

Wave Paper

Bateman 155 / Toned (Rose)

Bateman 156 (Mauve)

unrecorded (Lake)



Used

Laid (Lake) unrecorded



BU 75

Stone b

1/2 Anna Ultramarine

Stone c

Bateman 154 (Rose)

Bateman 154 (Rose)



BU 79 Pin-perf.

Bateman 168 (Rose)

1/2 Anna Ultramarine / Pale Blue?

Bateman 169 (Mauve)

1899-1900. 2nd Issue lithographs
in Original colours

MONOGRAM Type B

B076 Imperf. Stone a

1 Anna Yellow-Olive to Olive-Green (shades)

Wave Paper

Bateman 155 (Rose)

Bateman 159 (Mauve)

Bateman 160 (Lake)



B080 Pin-Perf.

Bateman 170 (Rose)

Bateman 171 (Mauve)



1900-1901. 2nd Issue Changed colours
(original colours & papers)

MONOGRAM Type B

Wove Paper

BV 82

Imperf.

Stoneb

1/4 Anna Vermilion

Bateman 174 (Blue)

Bateman 175 (Hawke)

Bateman 176 (toned (Hawke))

Bateman 178 (Bottle)
(Green)



BV 87

Pin-perf.

Bateman 201 (Blue)



MONOGRAM Type B

2nd Issue lithographs, reprinted in different colours from original issues
and generally on laid papers

Laid Paper

$\frac{1}{4}$ A. Vermilion (M)
Bateman 177

$\frac{1}{4}$ A. Pink (M.)
Bateman 179

1 A. Dull Pink (M)
Bateman 182

1 A. Dull Pink/thick card (M)
Bateman



2 As Olive-Green (M)
Bateman 190

4 As Claret (M)
Bateman 195

1 R. Grey-Blue (M)
Bateman 198

1 R. Grey-Blue (L)
Bateman 199

1 R. Grey (M)
Bateman 200



Wave Paper

4 As. Grey-Lilac (L)
Bateman 197

1900-1901. 2nd Issue lithographs
in charged colours issued

MONOGRAM Type B

Wove Paper

BV83 Imperf. Stone b

1 Anna Vermilion

Bateman 180 (Blue)

Bateman 181 (Mauve)

unrecorded / toned (Bottle Green)



Used.



BV88 Pin-Perf.

Bateman 207 (Mauve)

1900-1901. 2nd issue lithographs
in original colours

MONOGRAM Type B

Wove Paper

Bu 84 Imperf.

Stone b

Bateman 186 (Blue)



2 Annas Orange-Yellow

Bateman 185 (Rose)

Bateman 184 (Mauve)



Bu 85

Imperf.

2 Annas Orange

Wove Paper

Bateman 188 (Blue)



Bateman 187 (Mauve)

Bateman 189 (Lake)



Used



Bu 89

Pin-Perf.

Bateman 202 (Mauve)

1900-1901. 2nd Issue lithographs
in Original Colours.

MONOGRAM Type B

Wave Paper

BV 86

Imperf.

Stone a

4 Annas Claret

Bateman 191 (Blue)

Bateman 192 (Rose)

Bateman 193 (Mauve)

Bateman 196 (Bottle Green)



BV 90

Pin-Perf.

Bateman 206 (Mauve)

unrecorded (Bottle Green)



MONOGRAM Type C

1st. Issues (Remainders)
Sewing Machine Perf. 6 $\frac{1}{2}$ -11

Medium laid Paper

2 Annas
Orange-Yellow(M)
Ba. 207

4 Annas
Slate-Violet(M)
Ba. 208

8 Annas
Brown(M)
Ba. 209

12 Annas
Green(M)
Ba. 210

1 Rupee
Ultramarine(M)
Ba. 211

Imperf.

2 Annas
Orange-Yellow(M)
Ba. 212

4 Annas
Slate-Violet(M)
Ba. 213

8 Annas
Red-Brown(B)
Ba. 214

8 Annas
Red-Brown(M)
Ba. 215



12 Annas
Green(M)
Ba. 216

12 Annas
Green(Mch)
Ba. 217

1 Rupee
Ultramarine(M)
Ba. 218



Pin-Perf.

1 Rupee
Ultramarine(M)
Ba. 219

1 Rupee
Ultramarine(L)
Ba. 220



Remainder CTO cancellation

2nd Issues

Pin-Perf.

MONOGRAM Type C

Vermilion (M)
Ba. 221

Pink (M)
Ba. 222

1/4 Anna

Dull Red (M)
Ba. 224

Wave Paper

Slate-Violet (B)
Ba. 227



Pink (M)
Ba. 223

Dull Red (M)
Ba. 225

Laid Paper



Wave Paper

1/2 Anna

Laid Paper

Blue (M)
Ba. 228

Blue/toned (M)
Ba. 229

Blue (L)
Ba. 232

Blue (M)
Ba. 230

Blue/toned (M)
Ba. 231

Blue (L)
unrecorded



1 Anna

2 Annas

4 Annas

Vermilion (M)
Ba. 233

Deep Red (M)
Ba. 234

Yellow (M)
Ba. 235

Orange (M)
Ba. 236

Wave Paper
Dull Purple (M)
Ba. 237



2nd Issues

Imperf.

Vermilion (B)
Ba. 238



Pink (M)
unrecorded



1/4 Anna

Dull Red (M)
Ba. 243



Dull Red / lined (M)
Ba. 244



Wave Paper

Red-Brown (M)
Ba. 247



Bistre-Brown (M)
Ba. 249



Chocolate (M)
Ba. 251



Black (M)
Ba. 253



Slate-Violet (B)
Ba. 256



Slate-Violet (M)
Ba. 257



Vermilion / lined (M)
Ba. 239



Vermilion / lined (B)
Ba. 240



Vermilion / lined (Sp. Blue)
unrecorded



Pink (M)
Ba. 241



Laid Paper
Pink (Sp. Blue)
unrecorded



Dull Red (M)
Ba. 242



Red-Brown (M)
Ba. 245



Red-Brown / lined (M)
Ba. 246

Vert. Laid

Horiz. Laid

Bistre-Brown (M)
Ba. 248



Yellow-Brown (M)
Ba. 250



Lilac (B)
Ba. 255

vert. laid

hor. laid



MONOGRAM Type C

2nd Issues Imperf.

MONOGRAM Type C

1/2 Anna

Ultramarine (a)
Ba. 258

Ultramarine/toned (L) (d)
Ba. 259

Ultramarine (L) (e)
Ba. 260

Ultramarine/toned (L) (e)
Ba. 259

Wave Paper
Indigo (M)
Ba. 261



Indigo (Brown)
Ba. 266

Lilac (B)
Ba. 267

Emerald-green (M)
Ba. 272



Blue/Thick (H)
Ba. 262



Pale Blue (H) (b?)
Ba. 263



Blue (L) (e?)
Ba. 264



Ultramarine (Brown) (e?)
Ba. 265



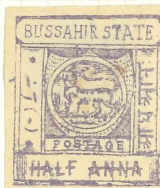
Laid Paper
Lilac (B)
unrecorded



Lilac (M)
Ba. 268



Lilac (Brown)
Ba. 269



Slate-Violet (B)
Ba. 270



Grey (B)
Ba. 271



Emerald-green (M) (d)
Ba. 273



Emerald-Green (Violet)
unrecorded.



2nd Issues Imperf.

MONOGRAM Type C

1 Anna

Wove Paper

Vermilion(M)
Ba. 274



Vermilion/toned(M)
Ba. 275



Pink(M)
Ba. 276

Chocolate(BL)
Ba. 277

Grey(M)
Ba. 278

Green(M)
Ba. 279



Olive-Green(B)
Ba. 281

Olive-Green(M)
Ba. 282



Yellow-Green(M)
Ba. 280



Pink(M)
unrecorded



Pink/toned(M)
unrecorded



Laid Paper



2nd Issues Imperf.

MONOGRAM Type C

2 Annas

Wove Paper

Orange-Yellow (a)
Ba. 283

Lemon Yellow (M)(b)
Ba. 284

Yellow (M)(b)
Ba. 284

Orange-Yellow (M)(b)
Ba. 285

Orange-Yellow (sp. blue) (b)
unrecorded



Olive-Yellow (M)(b)
Ba. 286

Orange (M)(b)
Ba. 287

Orange (G)(b)
Ba. 288



Laid Paper

Olive-Green (M)(b)
Ba. 289



2nd Issues Imparf

MONOGRAM Type C

4 Annas

Dull Purple (B)
Ba. 290



Dull Purple (M)
Ba. 291



Claret (B)
Ba. 292

Claret (M)
Ba. 293



Claret (L)
Ba. 298
unrecorded



Wove Paper

Slate-Violet (L)
unrecorded



Brown (M)
Ba. 294



Brown (L)
unrecorded



Laid Paper

8 Annas

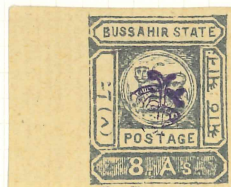
Laid Paper

Olive/toned (M)
Ba. 295



Grey-Violet (M)
Ba. 296

Grey-Violet/toned (M)
Ba. 297



Red-Brown (M)
Ba. 299

Red-Lilac (B)
Ba. 298

Wove Paper

2nd Issues Imperf.

MONOGRAM Type C

12 Annas

Wove Paper

Olive-Green/Insel (M)
Ba. 304

Slata-Grey (M)
Ba. 300



Dull Purple (M)
Ba. 301



Green (A)
Ba. 302



Olive-Green (M)
Ba. 303



Laid Paper
Chocolate (M)
Ba. 305

1 Rupee

Wove Paper

Carmin (M)
unrecorded.



Sage-Green (M)
Ba. 306

Carmin (M)
Ba. 307



Grey-Blue (M)
Ba. 308



Laid Paper
Ultramarine (M)
Ba. 309



DOUBLE MONOGRAMS B+C

1st Issues Imperf

8 Annas Red-Brown

C(M) on B(B)
Ba. 310?



12 Annas Green

C(M) on B(R)
Ba. 311?



Medium Laid Paper

1 Rupee Ultramarine

C(M) on B(R)
Ba. 312?

1st Issues Pin-Perf.

12 Annas Green

C(M) on B(R)
whisked



MONOGRAM Type D

1st Issue Imperf.

1 Rupee Ultramarine(M)
Ba. 313

Wave Paper



2nd Issue Pin-Perf.

$\frac{1}{4}$ Anna

Wave Paper

Vermilion(B)
Ba. 314

Vermilion(M)
Ba. 315

Dull Red(M)
Ba. 316

Brown(M)
Ba. 317

1 Anna

Vermilion(M)
Ba. 318

12 Annas

Green(M)
Ba. 319

2nd Issue Imperf.

MONOGRAM Type D

$\frac{1}{4}$ Anna

Wove Paper

Vermilion (M)
Ba. 320

Pink (M)
Ba. 321

Yellow-Brown (R)
Ba. 324

Chocolate (M)
Ba. 326

Slate-Violet (M)
Ba. 328

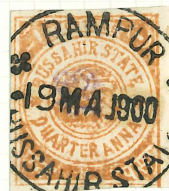
Pink (B)
Ba. 322

Pink (M)
Ba. 323

Yellow-Brown (M)
Ba. 325

Slate-Violet (M)
Ba. 327

Laid Paper



cto cancellation

$\frac{1}{2}$ Anna

Wove Paper

Blue (M)
Ba. 329

Blue/toned (M)
Ba. 330

Blue (L)
Ba. 331

Lilac (M)
Ba. 332

Slate-Violet (M)
Ba. 333

Green (R)
Ba. 334

Green (L)
Ba. 335

Green (M)
unrecorded

Lilac (M)
unrecorded

Laid Paper



2nd Issue Imperf.

unrecorded
early stage

1 and pink (M)



MONOGRAM Type D

1 Anna

pink (M)
Ba. 339

Wove Paper

vermilion (M)
Ba. 336

pink/thick (B)
Ba. 337

pink (B)
Ba. 338

pink (M)
unrecorded

green/toned (M)
Ba. 340

Laid Paper

green (M)
Ba. 341



2 Annas

yellow (M)
Ba. 342

orange (L)
Ba. 343

brown-orange (B)
Ba. 344

brown-orange (M)
Ba. 345

green (M)
Ba. 346

olive-green (M)
Ba. 348

Wove Paper



green/toned (L)
Ba. 347

green/toned (M)
unrecorded

Laid Paper



2nd Issue Imperf.

MONOGRAM Type D

4 Annas

Wave Paper

Claret (M)
Ba. 356



Brown (M)
Ba. 341



Laid Paper

8 Annas

Claret (M)
Ba. 352

Red-Brown (M)
Ba. 355

Wave Paper

Laid Paper

Ultramarine (M)
Ba. 357



Claret (M)
unrecorded



Grey-Violet (M)
Ba. 353

Lilac-Brown (B)
Ba. 354

Red-Brown (F)
Ba. 356

2nd Issue Imperf.

MONOGRAM Type D

12 Annas

Wave Paper

Brown/Toned (B)
Ba. 359

Green (M)
Ba. 361

Claret (B)
Ba. 357

Violet (B)
Ba. 358

Green (M)
Ba. 360

Laid Paper



1 Rupee

Wave Paper

Slater (M)
Ba. 362

Pink (M)
Ba. 364

Laid Paper

Carmine (M)
Ba. 363



2nd Issue Remainders/Reprints

Laid Paper

$\frac{1}{4}$ A. Dull Pink (M)
Ba. 407

MONOGRAM Type E

Wove Paper

$\frac{1}{2}$ A. Blue (H)
Ba. 408

4 A. Claret (H)
Ba. 409

MONOGRAM Type F

2 As. Orange (H). Ba. 410

Wove Paper



MONOGRAM Type G

Laid Paper

$\frac{1}{4}$ A. Black (H) Unrecorded

$\frac{1}{4}$ Anna Pink (H) Ba. 411



MONOGRAM Type H

Laid Paper.

Wove Paper

12 As. Brown-purple (G)
Ba. 412

12 As. Chocolate (G)
Ba. 413

12 As. Violet (G)
Ba. 414

12 As. Violet (G)
Ba. 415

2d Issue Reprints

MONOGRAM Type I
(Unrecorded)

Laid Paper

12 As. Bright Green(L)



1 R. Grey-Blue(L)



2nd Issues, Lithographed

NO MONOGRAM

Stamps in colours and values of Original issues were probably genuine accidents and included with issued stamps. The following were later issues or reprinted.

Pin Perf.

12 Annas Green

Laid Paper

Ba. 371

Imperf.

1/4 Anna

Wove Paper

Black
Ba. 378

Grey
Ba. 379

Chocolate
Ba. 380

Pink /toned
Ba. 373

Dull Red /toned
Ba. 374

Olive - Yellow
Ba. 375

Black
Ba. 376

Laid Paper
Black (heavy frame)
Ba. 377



2nd Issues, lithographed

NO MONOGRAM

1/2 Anna

Wave Paper

Slate-Violet/toned
Ba. 383

Lilac
Ba. 385

Laid Paper

Slate-Violet/toned
Ba. 384

Lilac
Ba. 386



1 Anna

Laid Paper

Pink
Ba. 389

Dull Pink/toned
Ba. 389



Stone(b)

2 Annas

Laid Paper

Green/toned
Ba. 393

Wave Paper

4 Annas

Laid Paper

Slate-Violet
Ba. 396

Brown
Ba. 397

2nd Issues, lithographed

NO MONOGRAM

8 Annas

Laid Paper

Chestnut
Ba. 398

Chocolate
Ba. 399

Claret
Barecorded



12 Annas

Wave Paper

Laid Paper

Violet
Ba. 401

Green
Ba. 402



1 Rupee

Laid Paper

Grey/Toned
Ba. 404

Claret
Ba. 405

POSTMARKS

Bateman Type 7



CTO

The 19 MA. 1900 cancellation widely used CTO on remainder stocks of various issues.

1st. Issue



Monogram Type C Reprints



FORGERY of MONOGRAM Type C

This Monogram has a differently shaped S

$\frac{1}{4}$ A. Dull Pink (H)
Ba. F₁

Laid Paper

8 As. Red-Brown (H)
unrecorded



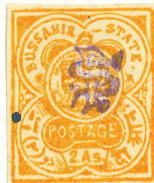
12 As. Yellow-Green (H)
unrecorded



2 As. Ochre (H)
unrecorded



2 As. Orange (H)
unrecorded



Wove Paper

MODERN PHOTOGRAPHIC

FORGERIES

Both Dies and Monograms match genuine issues. The Paper is different - a slightly toned Wave Paper, slightly ribbed. Colours are not right and Postmarks are partial only and too grey.

Stone a



1 Anna



Stone b

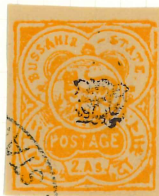


2 Annas

Stone a



Stone b



POSTMARKS

Bateman Type 8

Bateman Type 9

Bogus surcharge used as obliterator

Genuine Stamps



Remainders / Reprints

