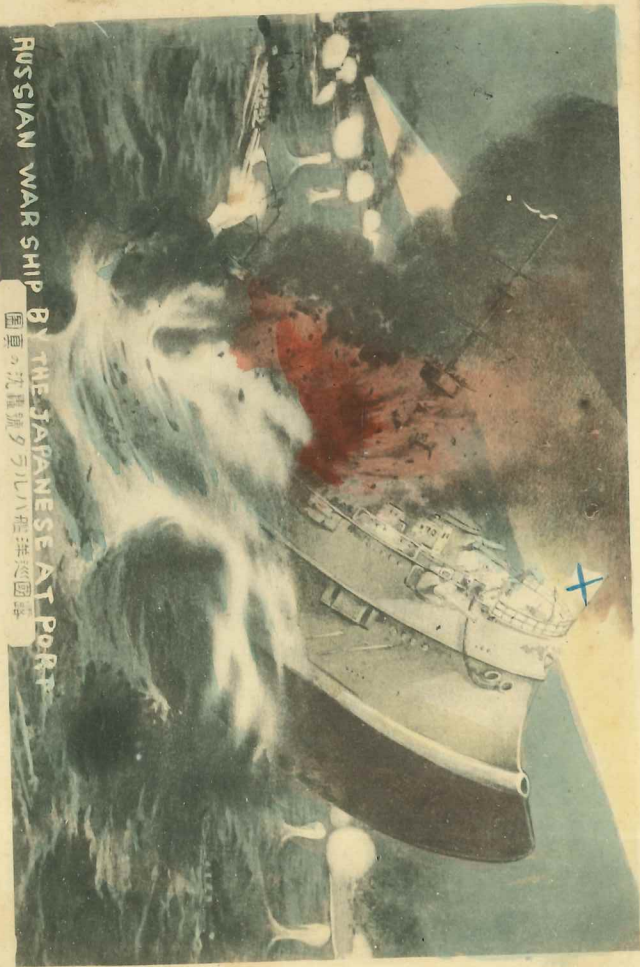


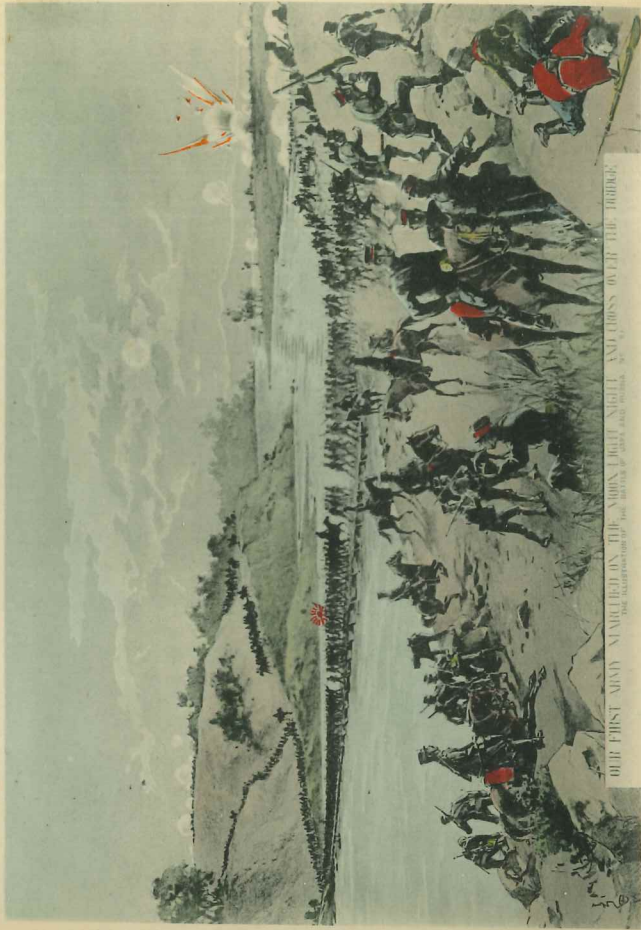
Union Postale Universelle.
書端合聯便郵國萬
CARTÉ POSTALE
15.00

Union Postale Universelle.
書端合聯便郵國萬
CARTÉ POSTALE
15.00

JAPAN
13 PPCs showing
the Russian Japanese
war 1905
Choke the m/s figures at
back cannot be taken away
£ 1000 :-

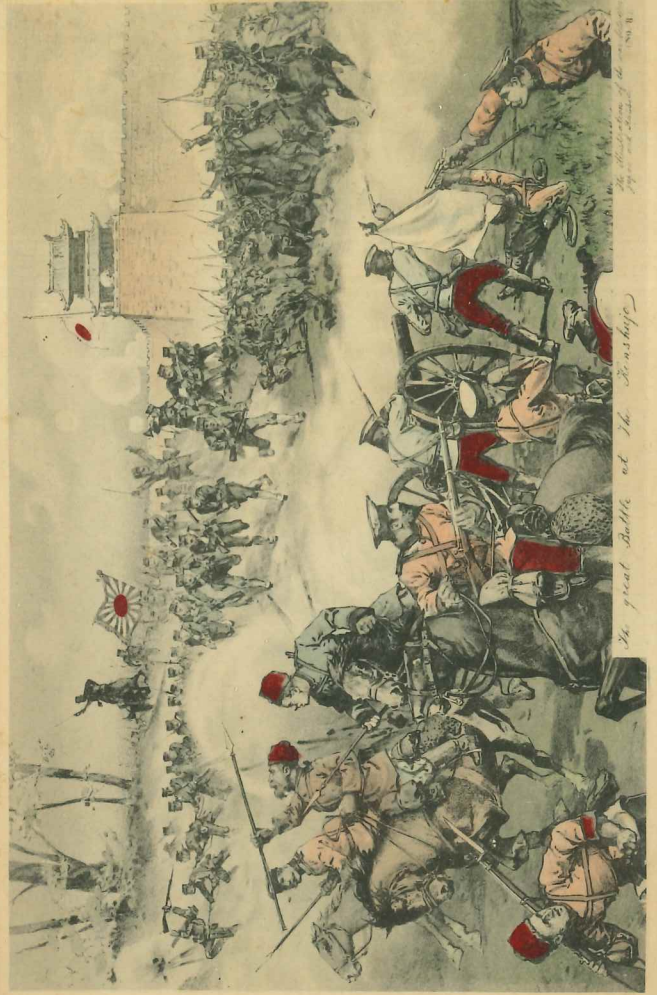
RUSSIAN WAR SHIP BY THE JAPANESE AT PORT
國皇の沈没船ヲヲルル艦隊の砲撃





OUR FIRST ARMY CAMPLED ON THE MOON LIGHT NIGHT AND CROSS OVER THE BORDER

The illustration of the first night of the war.



The great battle at the Shinshu

The illustration of the first night of the war.

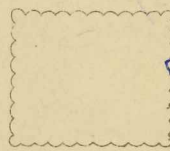


The occupation of Fushikawa by Japanese. Last night of July, 1904.

Union Postale Universelle.
CARTE POSTALE

書端台聯便郵國萬

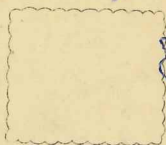
10.00



Union Postale Universelle.
CARTE POSTALE

書端台聯便郵國萬

10.00



Union Postale Universelle.
CARTE POSTALE

書端台聯便郵國萬

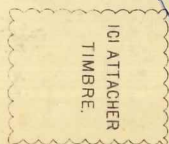
8.00



Union Postale Universelle.
CARTE POSTALE

書端台聯便郵國萬

12.00





THE BATTLE OF THE YALU RIVER, 1894. BY H. W. WOODS. PUBLISHED BY THE NATIONAL GEOGRAPHIC SOCIETY, WASHINGTON, D. C.

Union Postale Universelle.
CARTE POSTALE

書端台聯便郵國萬

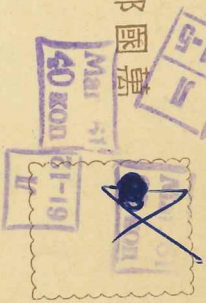
15.00



Union Postale Universelle.
CARTE POSTALE

書端台聯便郵國萬

15.00



Union Postale Universelle.
CARTE POSTALE

書端台聯便郵國萬

15.00



Union Postale Universelle.
CARTE POSTALE

書端台聯便郵國萬

15.00

