

2 ch surcharge due to severe shortage of that value in 1920 and 1922

Note: 1920 Salmon background: 1922 yellowish background



Dark red
Yellowish
background

Internal

2 chahi

Sultanabad
25 XII 22
to Kum
28 XII 22

The "S" is a
sunduq =
letterbox



Light red
Yellowish
background

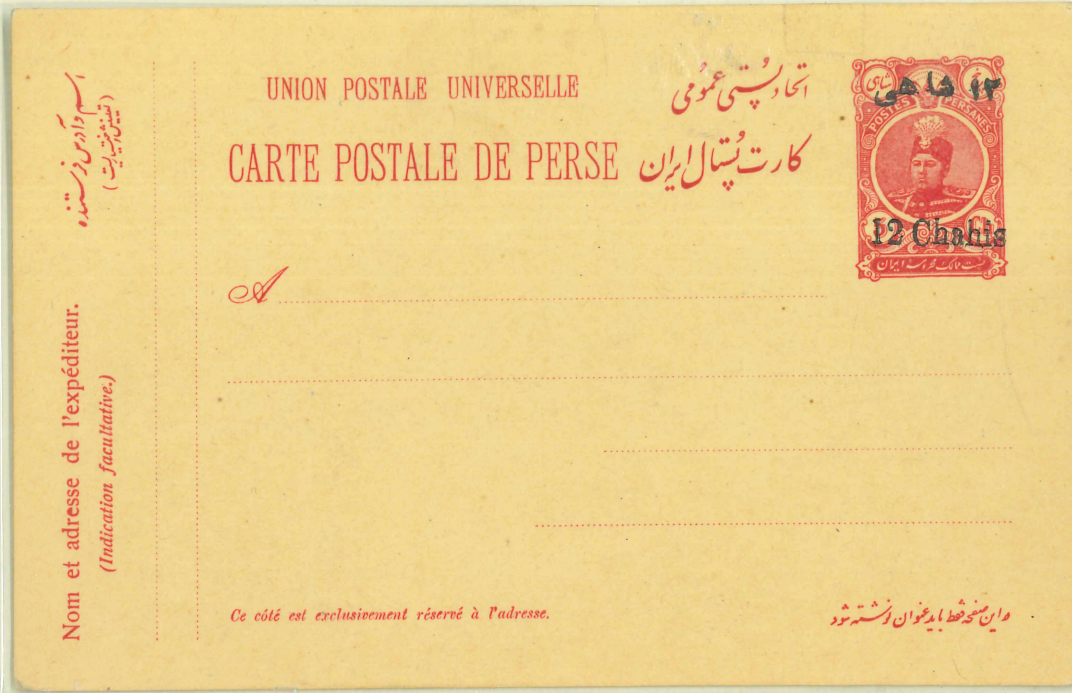
Internal
2 chahi

Teheran
9 XI 1922
to
Qasvin
11 XI 22

Rate: 2 ch

12 chahis on 5-chahi Shah Ahmed Mirza 1914

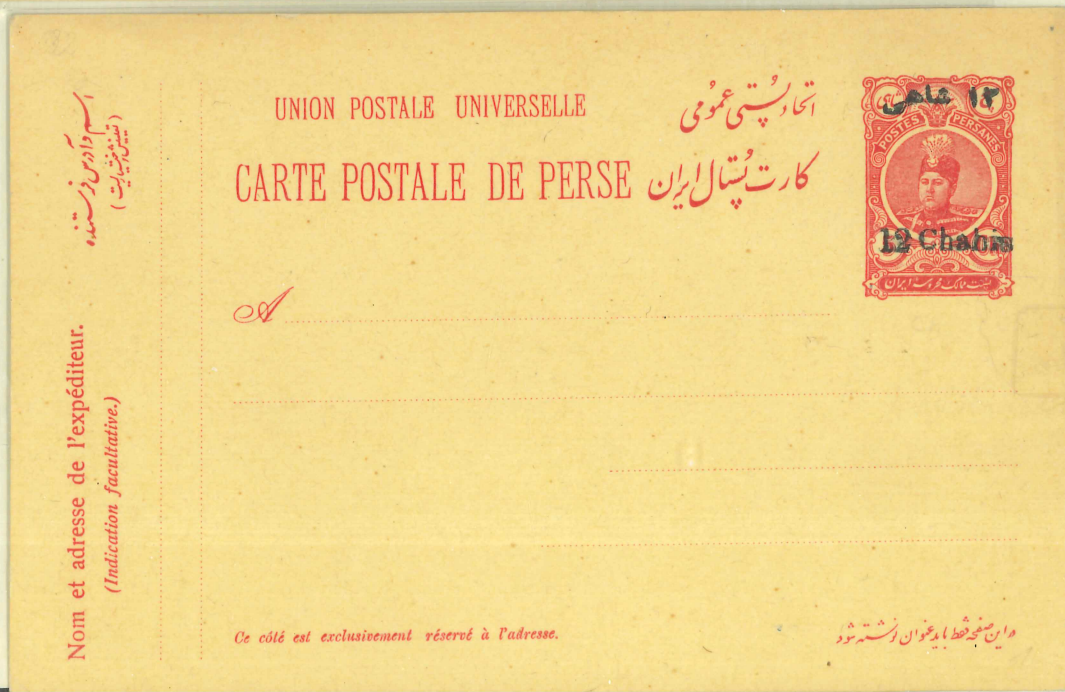
"Chahis" in Persian: **Type II** has 10,5 mm



Type II
Red
Large "C"



Type II
Red
Large "C"
Surcharge displaced towards the left
From
Rescht
7-VII 24
To
Paris
22-
VII/1924



Type II
Smaller "C" red