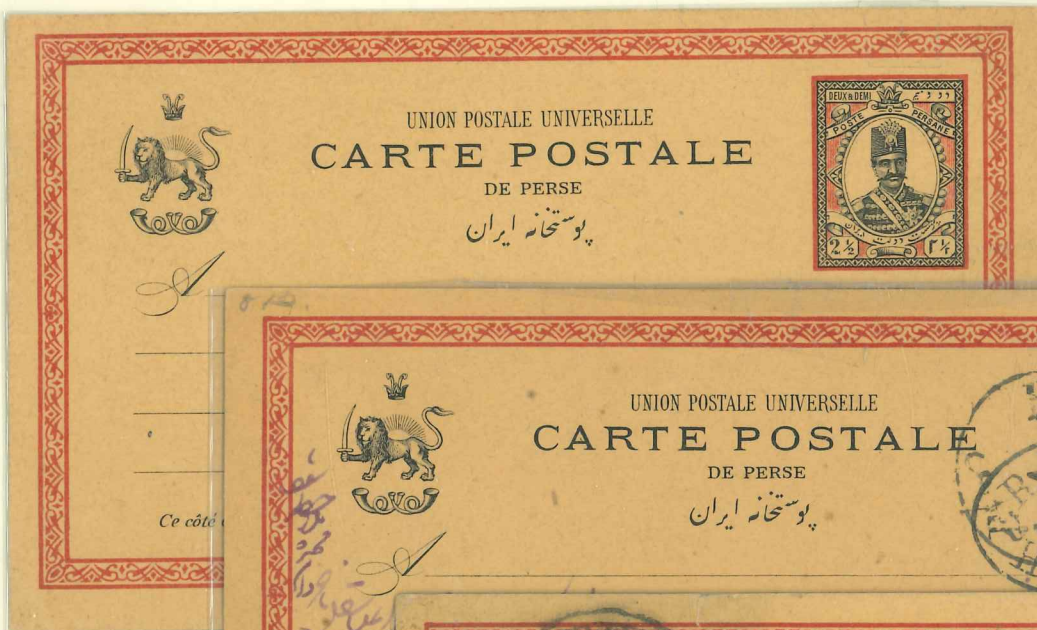
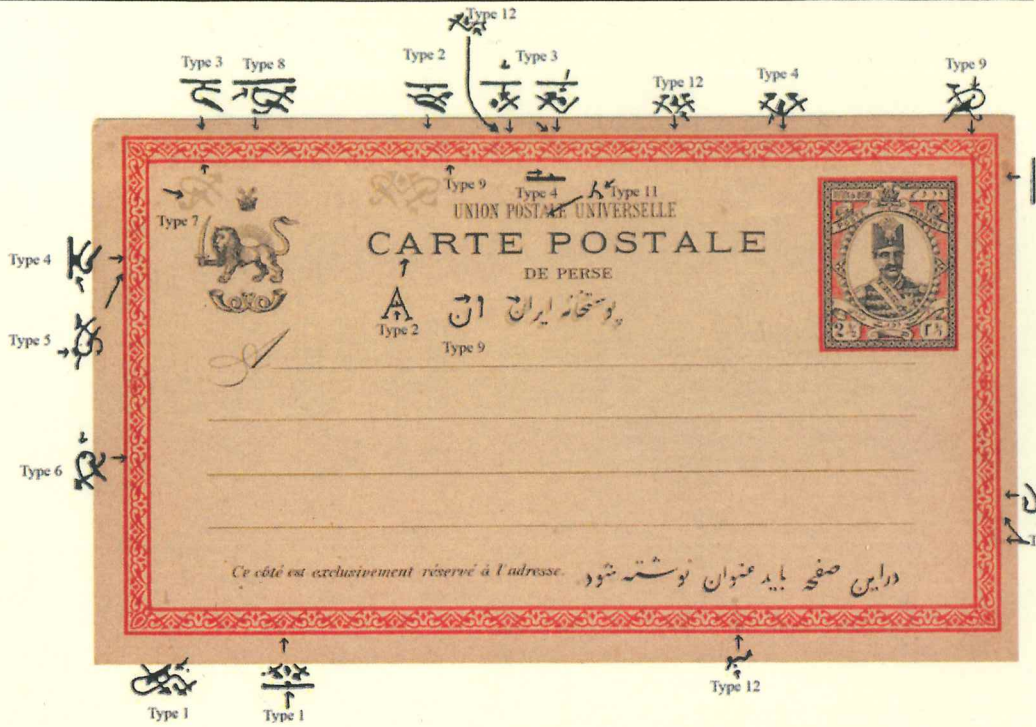


Twelve type of flaws have been identified



Flaw type 12

Flaw Type 2
Internal Recht to Kazvin

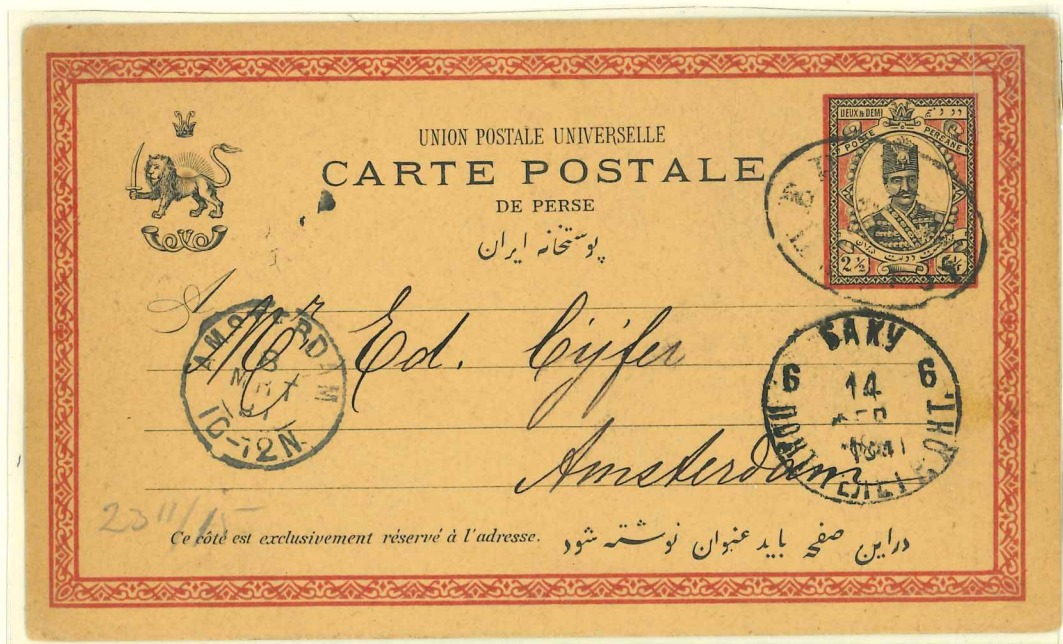


Flaw type 5
External 1892
Bouchir
30 10 87
via Teheran
to Vienna



Frame heavily de-centered upwards

From Teheran 1891 via Baku 6 14/? to Amsterdam





From
Teheran
1890
Via
Rescht
via Baku
1890
Via
'Enzeli
to
Paris

