

For internal use

2+2chahi
Complete

Green
Reply part
beige

Mint

2+2 chahi
up-rated

Only the first
part

Teheran
m/s 2 12 1897
to
Vienna
12 1 1898

Rates: 12 ch



Reply part

From Kachan
March 1896
to Teheran

Normal card

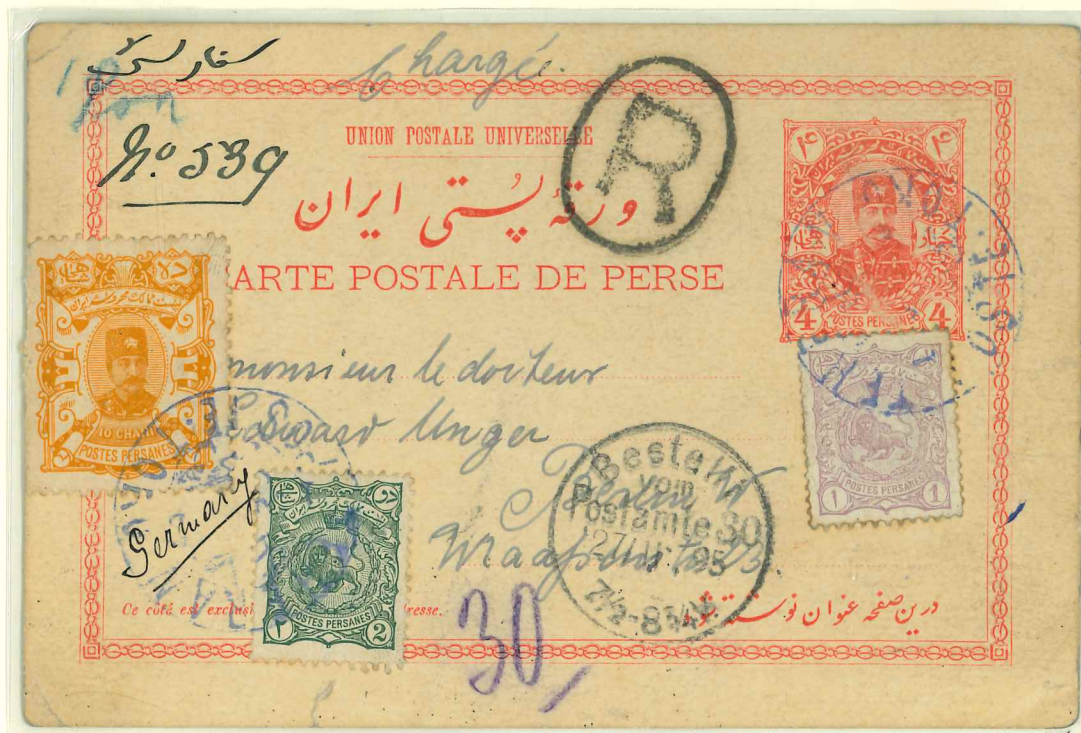


Sultanabad
 24 August
 1895
 to
 Switzerland
 23 IX
 Rate to
 abroad 4 ch
 Registration
 rate 10 chahi

The foreign rate increased from 3 1/2 to 4 chahis in 1894 till August 1895. Then to 5 ch



Red
Registered to Germany
 Teheran
 m/s 5 Feb
 1895 to
 Germany
 arriving
 Auma 17 3
 1895
 Rate: 4 ch
 Reg fee 10 ch



Light red
Registered
 Poste Toko
 Teheran
 10 Feb 1895
 to Germany
 27 II
New rates:
 5 ch
 Reg fee: 12 ch

4 ch and 4+4 chahi red on cream card

Normal and double cards



Normal

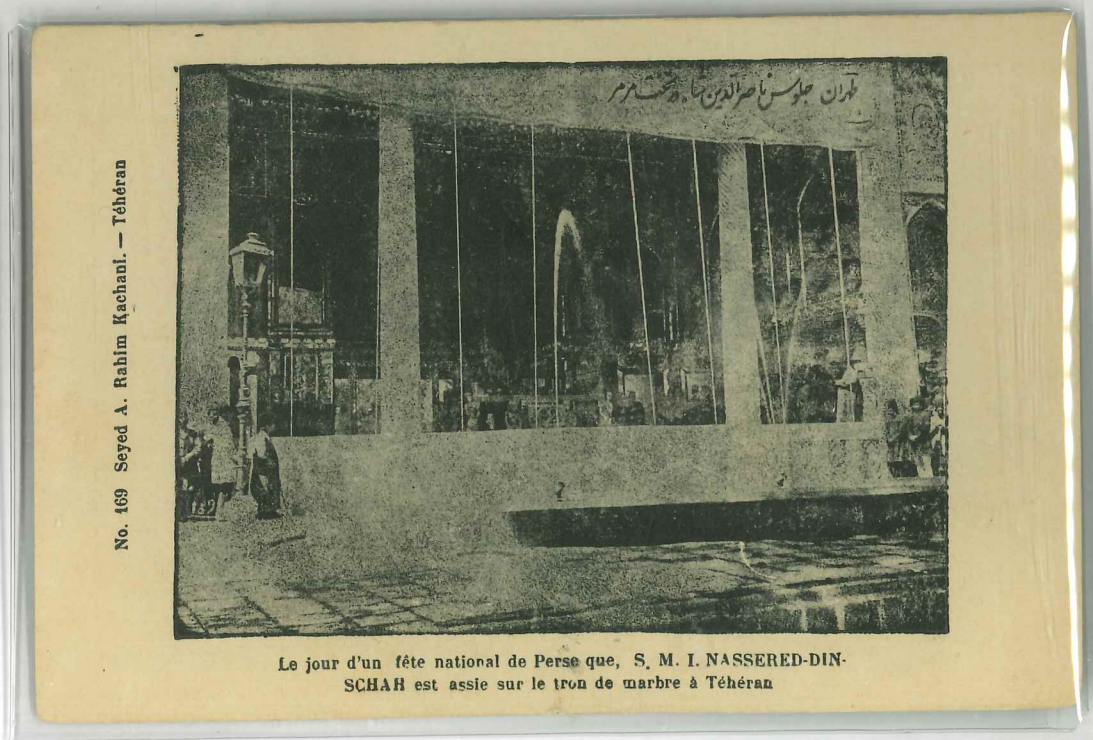
Different Shades

Complete double cards 4+4 ch Different shades

Ce côté est exclusivement réservé à l'adresse.

درین صفحه عنوان نوشته شود

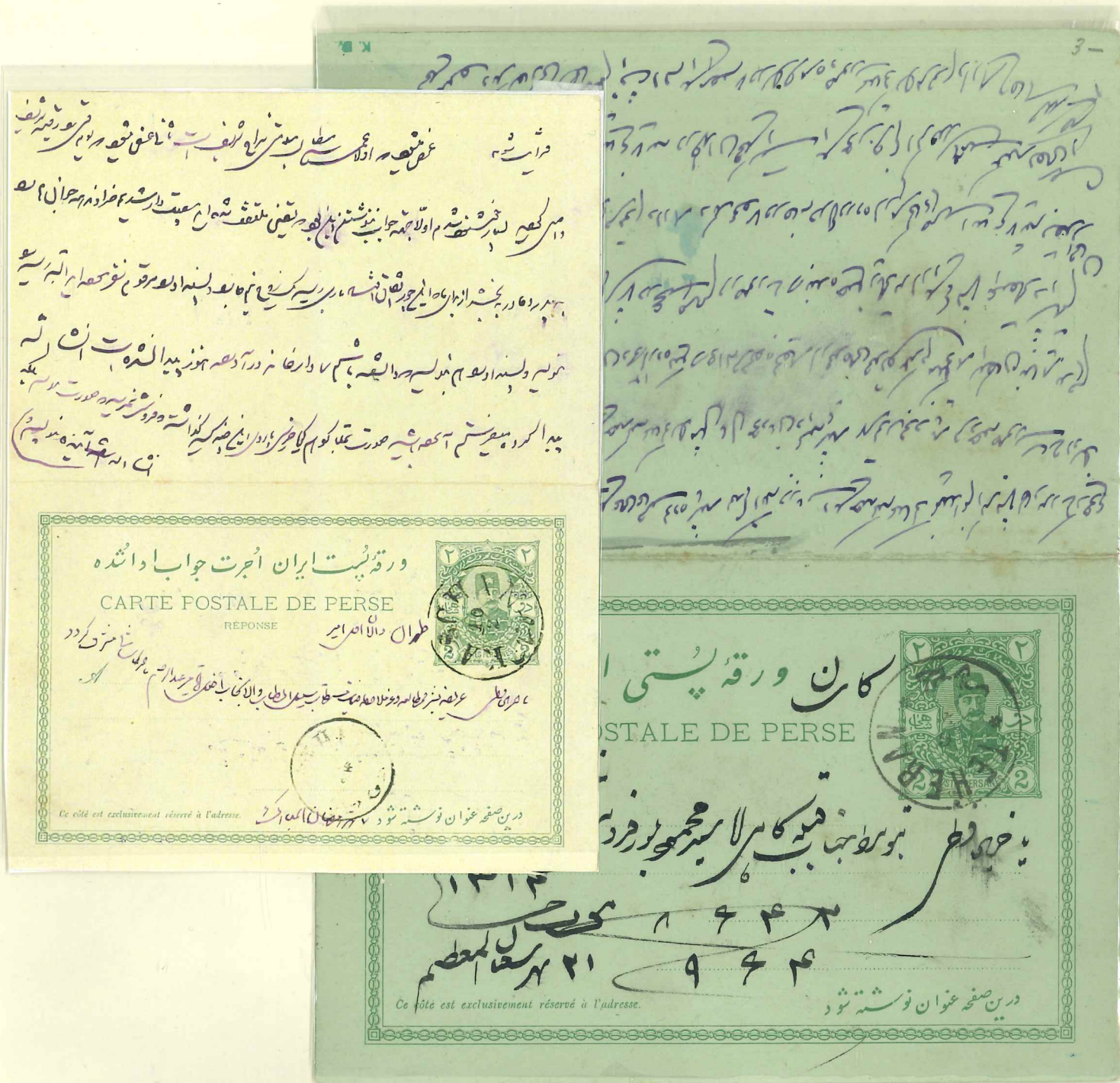
Two picture cards



The 2+2ch double-card used in both directions

Internal use

Very elusive



Sent from Teheran on 6 February 1897 to Kaschan. The receiver returned the prepaid double card on 10 February to Teheran. A faint arrival mark of Teheran applied

Rarely seen prepaid reply-card used intact in both directions