

Very
Light blue
Teheran Bazar
?-4-05
To
Qum
Arriving
? 4-05
Rate
6 chahi

شیراز



Light
Blue
Registered
Teheran Depart
10/10 ?
to
Belgium
27/10
(back)
Rectangular
Reg mark
Applied
Rate
17 ch
Reg. fee
13

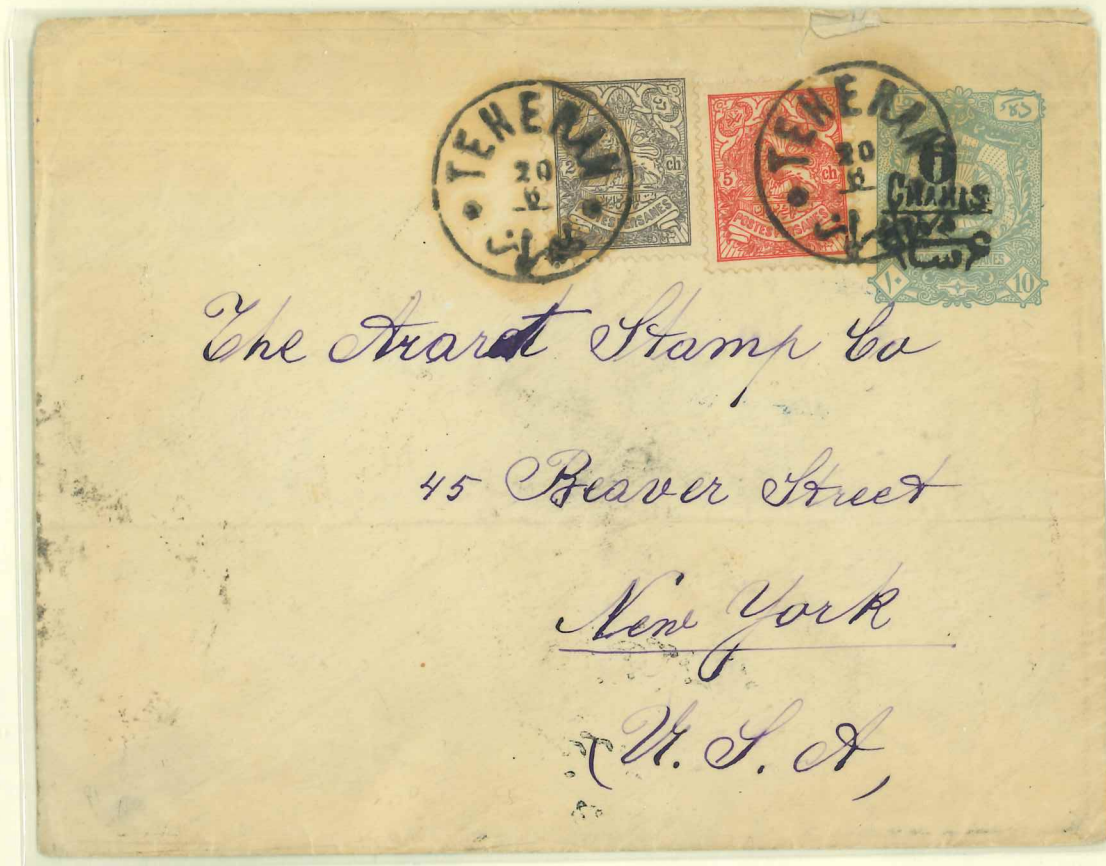


Blue
Djoulfa-
Isfahan
29-8-05
sent
to
Schiraz
Internal
rate
6 chahi

I. 1902/03

6 chahi black on 10 chahi

6 chahi in black on 10 chahis blue. A rate increase for internal letters from 5 ch to 6 chahis took place early in 1904



Grey blue
 External
 Teheran
 20 6 (05)
 to
 New York
 Backstamped
 ? July 1905
 Rate 13 ch

Grey blue

Internal

Registered

Sultanabad
 23 Oct 1905
 to Tabriz
 via Teheran
 27 Oct 1905

Rate 6 chahis
 reg fee 15 ch

