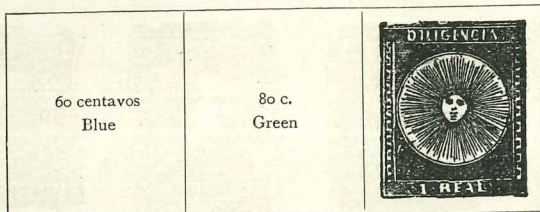


URUGUAY

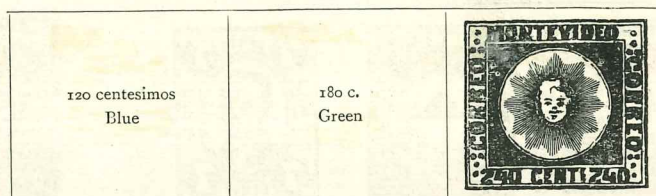
1201

1856



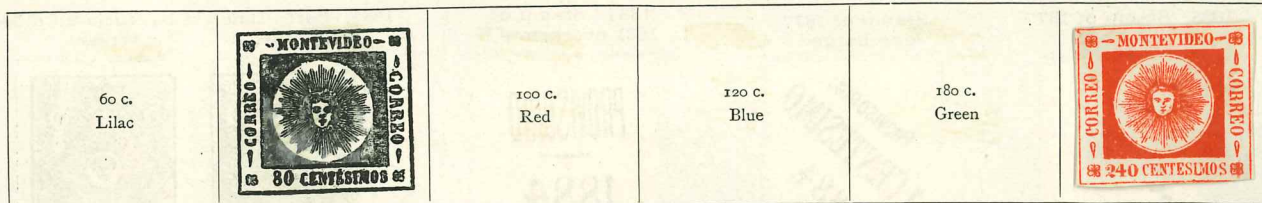
Vermilion

1857



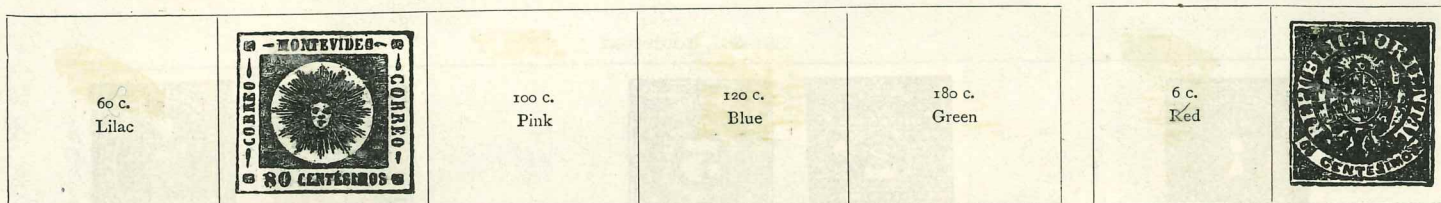
Vermilion

1859. Thin numerals



Yellow

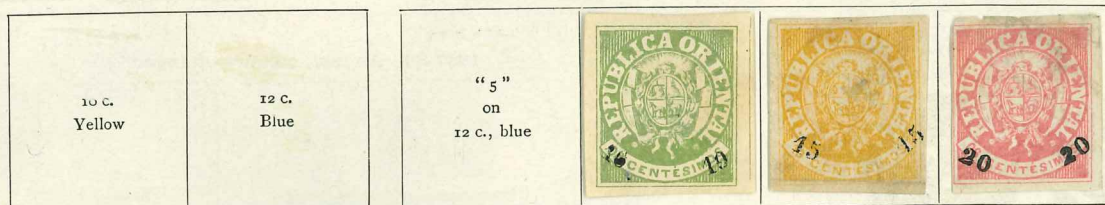
1860. Thick numerals



Yellow

Green

1866. As last, surcharged



22

x

x

January, 1866. Imperf.

October, 1866 Imperf.

Perf.



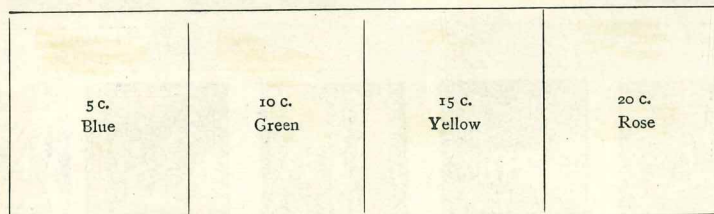
29 b Blue

30 b

Rose

Black

1872. As January, 1863. Perf.



1877. Rouletted



42 Red-brown

Green

Vermilion

Blue

57

URUGUAY—continued

1881. Perf.



Green Carmine Blue

1883. Perf.



Green Carmine Blue Sepia

1883. Stamp of 1877 overprinted



75

Stamp of 1877 surcharged



76

1884. Stamp of 1881 overprinted

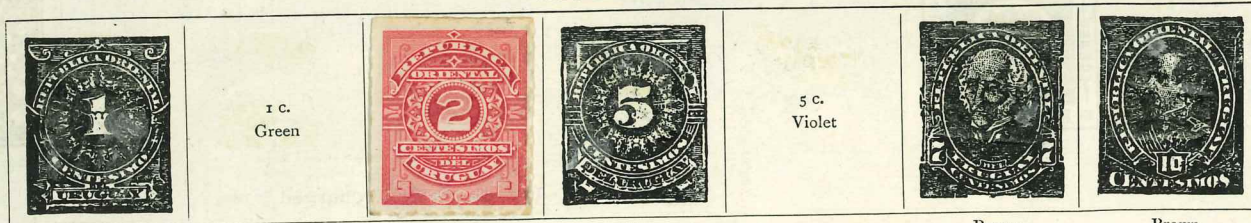


1884. Perf. Lines of background differ



Ultramarine Blue

1884-88. Rouletted



Green-lilac

1 c. Green

Scarlet

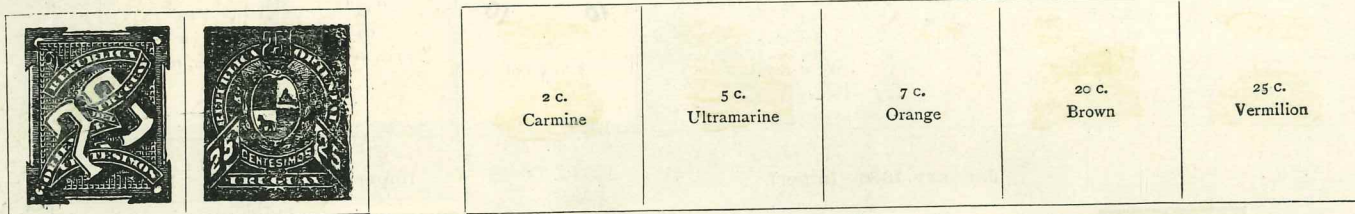
Blue

5 c. Violet

Brown

Brown

1887-88. As last, colours changed



Mauve

Slate-violet

2 c. Carmine

5 c. Ultramarine

7 c. Orange

20 c. Brown

25 c. Vermilion

1887. Rouletted.



Purple

1888. Rouletted.



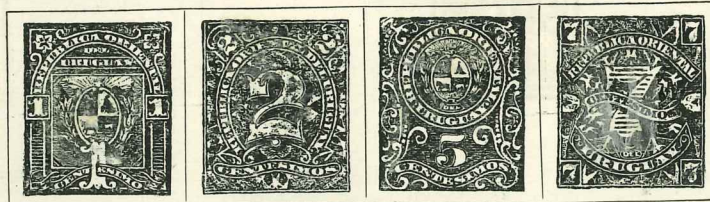
Violet

1889. Stamp of 1884 overprinted



114

1890. Perf.



Green

Carmine

Blue

Brown



Green

Orange

Lake

Blue

Lilac

Stamps of 1884 overprinted in red



133

135

Stamps of 1890 surcharged in red



137

136

1892. Perf.



Green

Rose


Blue

Orange

138/41

URUGUAY—continued

1894. As 1890. Colours changed

| | | | | | | |
|--------------|--------------|--------------|---------------|-----------------|---|--------------------|
| 1 c. Blue | 2 c. Lake | 5 c. Rose | 7 c. Green | 10 c. Orange |  | 25 c. Vermilion |
|--------------|--------------|--------------|---------------|-----------------|---|--------------------|

142

1894. Perf.

1895. Perf.



Scarlet

Purple

Bistre

Blue

Red

Green

149/52



Brown

Black and green

Black and chestnut

Black and blue

Black and orange-brown

Green and purple

1897. Joaquim Suarez Commemorative issue. Perf.
Centre in black Overprinted in red



Blue and carmine

Marone

Blue

Lake

Marone

Blue

Lake

143

1897. Types of 1895. Colours changed. Perf.



As last, overprinted

New type

Overprinted



Indigo (red)

Marone (blue)

Green (blue)

Red

Red (blue)

151/200

151

152

URUGUAY—continued

1898. Various stamps surcharged in black, red, or blue



Blue Indigo Claret Blue Blue
1898 1899-1900. Stamps of various types Colours changed



1899. Perf. Blue 1 c. Deep green (1890) 20c Blue (1890)



1900. Provisional of 1897 Commemorative issue. Surcharged

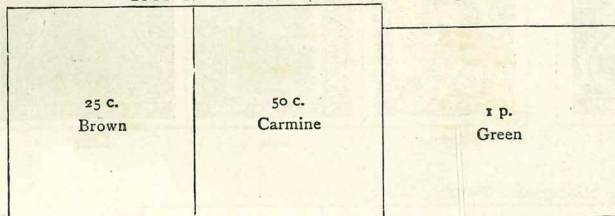


1901. Perf. Engraved



Green Vermilion Blue Orange-brown Lilac

1900-1. As 1895. Colours changed



1904. Perf. Lithographed



Orange Green Red

1904. As last, overprinted Paz-1904



Blue Violet-brown Blue Bistre



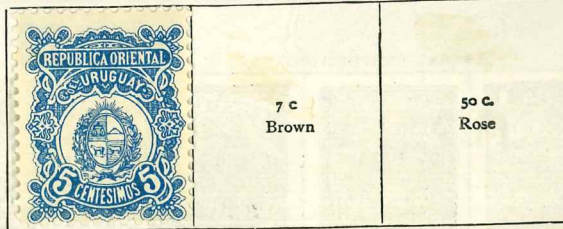
1 c. Green

1906. Perf.



Blue

1906-7. Perf.



Blue

7 c. Brown 50 c. Rose

URUGUAY—continued

1908. Rouletted.



279/51 Black and red

Aug., 1909. Wmk. "R.O." Perf.



282/3 Black and brown

1909. Stamps of 1901, surcharged



284/5

1910. Wmk. "R.O." Perf.



286/7 Red

1910. Stamps of 1889-1900 and 1906 surcharged



294/1 c., green

50 c., red

50 c., rose

1910. Engraved. Perf.



297/305 Mauve

1911. Wmk. "R.O." Perf.



Orange

1911. Stamps of 1900 surcharged in red or blue



306 Black and carmine

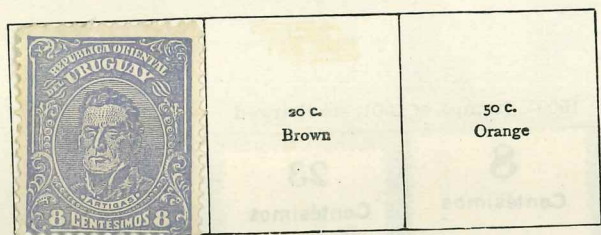
314/5

URUGUAY—continued

1912 As 1910, but lithographed



As last overprinted in black



1919. Perf.



1919. Perf.



1920. Perf.



1921. Perf.



URUGUAY—continued

1207

1921—continued



1921. As 1900
Surcharged



376

1921. Perf.



390

1923. As 1921. Watermarked "REPUBLICA O. DEL URUGUAY" in sheet



8 c.
Rosine

40/12

414

377

1923. Centres in brown. Perf.



Blue

1923. Wmk. "Caduceus"



42/32
Grey



431

432

1923. Wmk. "REPUBLICA", etc. Perf.



Red

E 389

433/5

1924. Perf.



III.—N.I.—38

Rose

URUGUAY—continued

1924. Perf.



Blue

1924-25. As 1923 (Bird). Smaller type



450/505

477

507

524

509

426



417

458

439

460 W

441

442

462

1925. Perf.

Centres in grey



467/9

Rose



Rose

Centres in black. Perf.



470

Blue

Perf.



432

Green

URUGUAY—continued

1925—continued



484

Air stamps. Perf.
Inscribed "Montevideo"



Black and blue

472/3



Perf.

475

Green

Cancelled at P.O., not issued mint.

1926. Air stamps. Imperf.



495/8

Red

1927. Philatelic Exhibition stamps. Imperf.



524

Green

1928. As 1924-25. Surcharged



537

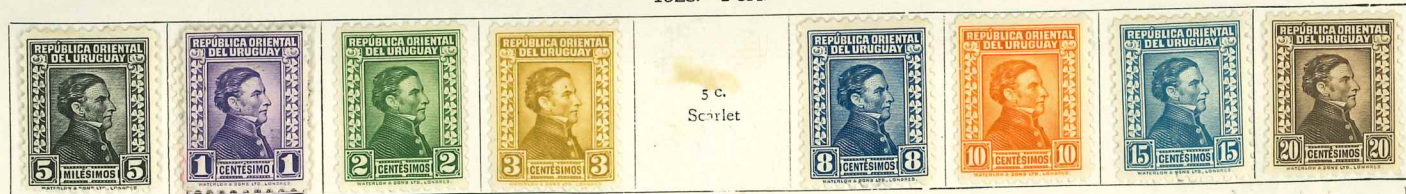
1928. Perf.



541

Carmine

1928. Perf.



5 c.
Scarlet

542/68

Green

URUGUAY—continued

1928—continued



563

566/8

Black and carmine

584/6

Scarlet

Imperf.



581

Perf.

Carmine

1928-29. Air stamps. Perf.



624

569

Green

0017



573

574



3 p. 80
Scarlet

1929. Perf.



536

Green

539

540

542

5 p.
Lake

1929-30. Air stamps. Perf.



617

URUGUAY—continued

1211

1929-30—continued



Vermilion

618



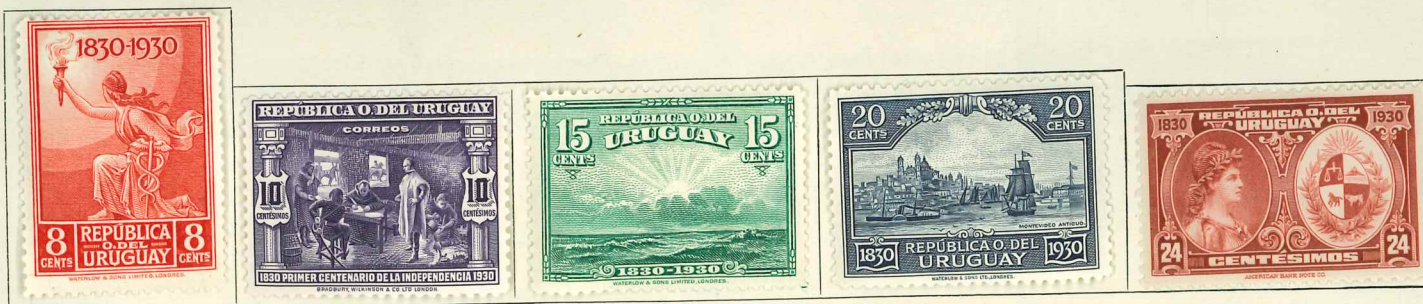
4 p. 50
Black

1930. Independence issue. Various designs. Perf.



Black

Carmine



648

URUGUAY—continued

1930—continued



Black

1930. Perf.



1932.



Slate



667
666
677

URUGUAY—continued

As 1930.
Surcharged



1932. Perf.

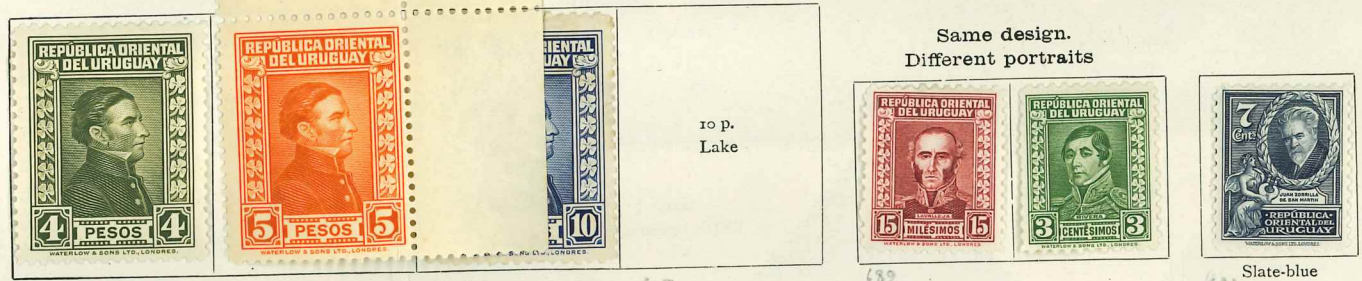


Green

1932-36. As 1928 and 1929. New values and colours. Engraved



Same design.
Different portraits



Lithographed



1933. Perf.



Green

URUGUAY—continued

1933—continued



695



Green



708/15

Green, brown and black



1934. Air stamps. As last, overprinted



URUGUAY—continued

1215

1934. Perf.



Green



1935. Air stamps. As 1932 but smaller



725



URUGUAY—continued

1935. Perf.



747/52

Grey-black



753/5

Green



D 404/9 (1922)



2 635/6



E 415/7 (1922)



D 502/3



D 490/4 (1926)



1 435/9 (1926)



63525

L 771/9 Late Fee (1936)



P 610/16 Parcel Post 1929



762/68



870 (12+3)



769

770

772