



CORFU (Italian Occupation)

Temp. occp. by Italy during a dispute with Greece in 1923.

1923. Stamps of Italy overprinted **CORFU**

5 c. Green	10 c. Rose	15 c. Slate	20 c. Orange	30 c. Chestnut	50 c. Mauve	60 c. Blue	1 L Brown and green
---------------	---------------	----------------	-----------------	-------------------	----------------	---------------	------------------------

1923. Same stamps surcharged

"25 l." on 10 c., rose	CORFU Lepta 60 on 25 c., blue	"70 l." on 30 c., chestnut	"Dracme 1.20" on 50 c., mauve	"Dracme 2.40" on 1 l., brown and green	"Dracme 4.75" on 2 l., green and orange
------------------------------	---	----------------------------------	--	--	---

1256

Plate flaws!

No's 10, 11 & 14 were not sent to Corfu Island evacuated by Italian troops on 27th Sept before they could arrive.

COSTA RICA

1863. Perf.



Blue

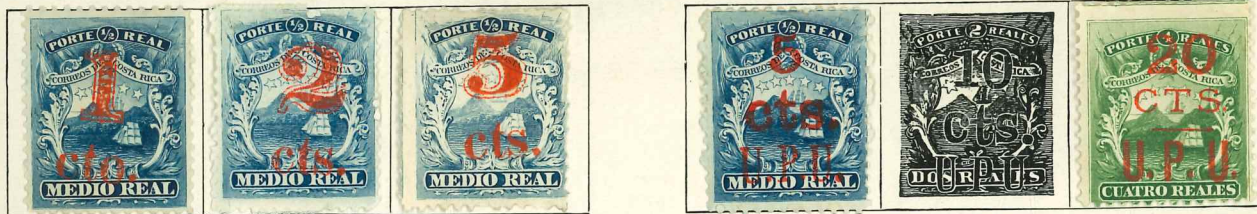
begin production

Stamps of 1863 surcharged

1/2

1881

1882



Blue

Red

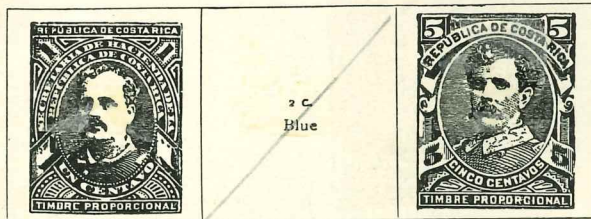
not priced used

1883. Perf.

		5 c. Purple	10 c. Orange	40 c. Blue
--	--	----------------	-----------------	---------------

Green

1884. Overprinted **CORREOS**

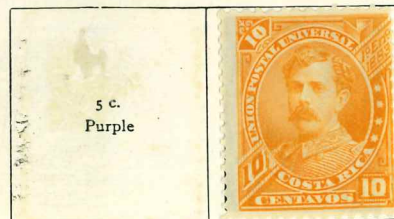


Red

Marone

Not issued

1887. Perf.



Orange

18/19

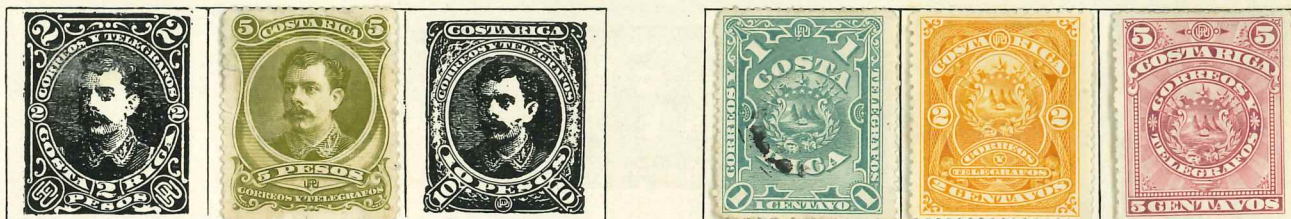
1889. Perf.



Sepia Blue Vermilion Chestnut Green Carmine Blue

12

1892. Perf.



Violet Olive Black Blue Orange Violet



Green Scarlet Blue Bronze on yellow Red on grey Blue on blue Brown on buff

1901. Perf.
Centres in black



42 Green Red 50 Lilac Blue 58 Olive Brown Lake

Centres in first colour



Brown and lilac Blue and lilac Black and olive Black and red Black and brown Red and green

1905. Stamp of 1901
surcharged

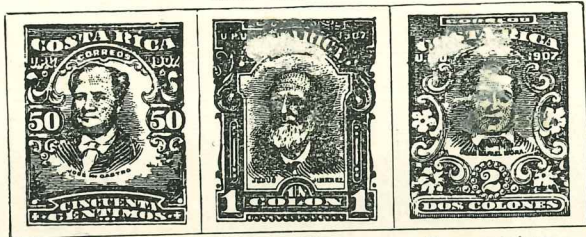
1907. Centre in first colour. Perf.



Blue and brown Black and green Blue and red Blue and buff Black and blue Slate and olive Green and lavender

COSTA RICA—continued

1907—continued



Blue and mauve Black and brown Green and claret

64/74

65/72

76

1910. Perf.



Brown Green Scarlet

77/84



Orange Blue Olive Purple Brown

1911. As 1907, overprinted in black or red



1911
on
1 c.
Blue and brown

1911
on
2 c.
Black and green

on
10 c.
Black and blue

86

88

87

90

92

93

Provisionals
1911. Telegraph stamps surcharged in red



Blue 100

Similar surcharge in black



"1 c."
on
10 c., blue

96

Similar overprint in blue



97

99

Surcharged in blue



101



On 5 c., yellow-brown

102

104



112

113

1921. Perf. Centres in black



Black and blue



Violet



1921. Perf.



Surcharged



Violet



129

1922. Stamps of 1910-1921 overprinted



in blue, red, or black



15 c.
Violet
(as 1921)

Inv. o/p Brown
All values exist inv. o/p

Green

Inv. o/p. Red

Orange

Inv. o/p. Blue

1922. Surcharged in red or black



130



on
5 c., orange

131



132

4 c.
Green

5 c.
Blue



0140 Carmine

1923. Perf.



137

Violet



Yellow



Green



Blue

COSTA RICA—continued

1923—continued



Brown

Carmine

Blue

Orange



Olive



Green

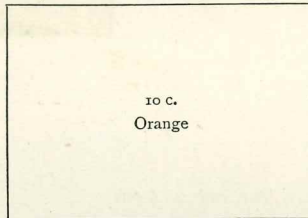


Carmine

1924. Perf.

2 c.
Purple

5 c.
Green



10 c.
Orange



Black



1925. Perf. and Imperf.



Green



Carmine



Blue

1926. Stamps of 1923. Surcharged



1926. Colours changed



= 10 10 =
on
12 c., carmine



Green



Carmine

1926. Perf.



164

Ultramarine

1926-27. Perf.



165

Ultramarine



Brown



Orange

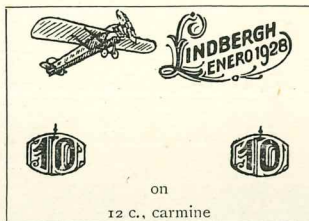
1928

1926-27—continued



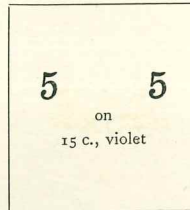
169 Violet

Stamp of 1923. Surcharged



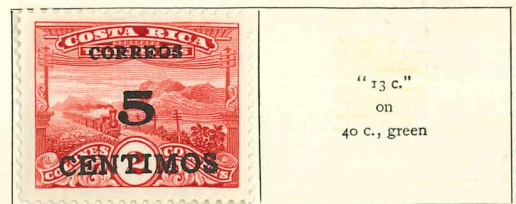
on
12 c., carmine

Stamp of 1921 Surcharged



170

1929. Telegraph stamps. Surcharged



171 A

1930. Air stamps. Official stamps surcharged in red

1930. As 1923 and 1926, but smaller size



174

Green

10 c.
Carmine



177/80

Stamp of 1926 overprinted



181

1930. Air stamps

Telegraph stamps surcharged



183

"40 c."
on
50 c., blue

As last, overprinted



185

Correo
Aereo
on
1 col., orange

1931. Air stamps

Fiscal stamps surcharged

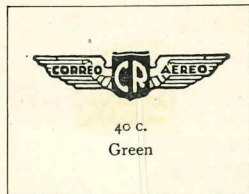
Telegraph stamps

Surcharged as 1930

Overprinted



182



193

40 c.
Green



190/2

1931. Perf.



Carmine

1932. Perf.

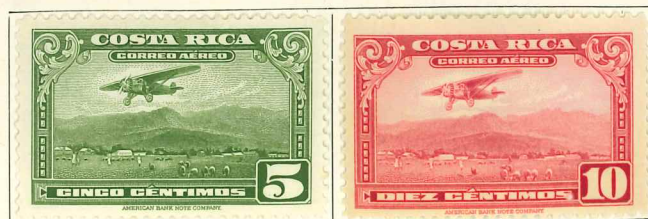


192

Orange

1937 No 233

1934. Air stamps. Perf.



198


Green

COSTA RICA—continued

1934—continued

15 c. Chocolate	20 c. Blue		40 c. Grey-brown
--------------------	---------------	--	---------------------

201

50 c Black	60 c. Orange	75 c. Violet	
---------------	-----------------	-----------------	---

Red

2 col. Blue	5 col. Black	10 col. Brown
----------------	-----------------	------------------

As 1924



211

208

1935. Perf.



212

Red

Various designs all dated "1935"

5 c. Green		30 c. Orange
---------------	--	-----------------

213

Red

1936. Perf.

45 c. Violet	50 c. Blue-black
-----------------	---------------------



218/25

Yellow-brown





226/7-1936

072



019/32 (June 1886)

Fiscals



0141



Bogus productions—made by the dealer who bought the remainder stock of the first issue

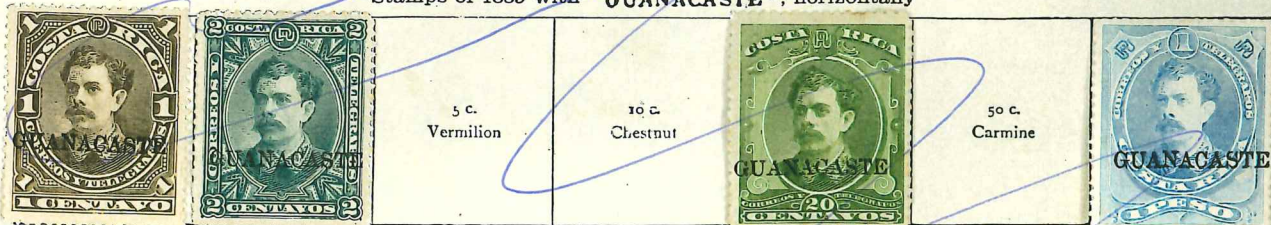
GUANACASTE

1885-92. Stamps of Costa Rica specially overprinted for the province of Guanacaste

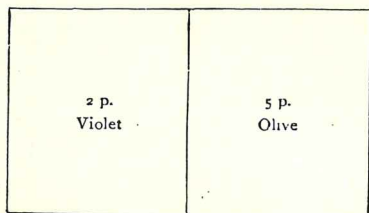
Stamps of 1883 overprinted "GUANACASTE" in various types



Stamps of 1889 with "GUANACASTE", horizontally



Same stamps with GUANACASTE horizontally







226/7-1936



019/32 (June 1956)

Fiscals



0141



Bogus productions made by the dealer who bought the remainder stocks of the first issue

GUANACASTE

1885-92. Stamps of Costa Rica specially overprinted for the province of Guanacaste

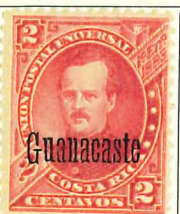
Stamps of 1883 overprinted "GUANACASTE" in various types



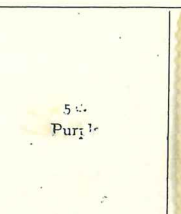
61A



61B



67 A/G2A



68A

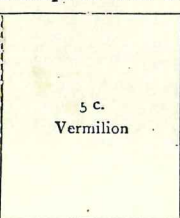


69A

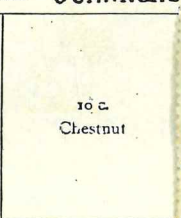
5 c.
Purple

40 c.
Blue

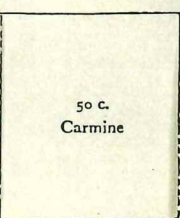
Stamps of 1889 with "GUANACASTE", horizontally



5 c.
Vermilion



10 c.
Chestnut

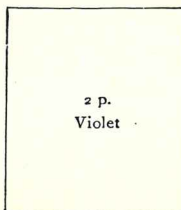


50 c.
Carmine

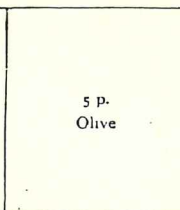


654

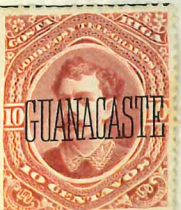
Same stamps with GUANACASTE horizontally



2 p.
Violet



5 p.
Olive



662

664

665



1933. Perf.



274/3

Green

1934. Air stamps. Stamps of 1929. Overprinted



AEREO
INTERIOR
1934

2 c.
Blue

279



15 c.
Blue

280

281

1935. Various designs inscribed "19 de Julio 1835-1935"
Postage stamps



Greenish blue and orange

Black and orange

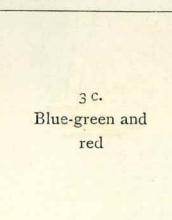


Air stamps



Greenish blue and brown

1935. Perf.



292 Red and brown

295 Blue-green and orange

296

297 Red and blue

GUATEMALA—continued

1935. Air stamps. Various designs. Bird in green. Perf.



Brown

299



305

As last, but inscribed "EXTERIOR"



306



1 q.
Blue

1936. Stamp of 1927.
Overprinted



321



323



322



Postal Stationery

1925—continued



205 Yellow-brown Blue Orange Purple Green 210 Black

1926. As last, but inscribed "1926"



212/220 Green Red



Orange

1929. As last. Surcharged

Stamp of 1925. Surcharged

1927. Perf.



223 Olive



224



226



243

1929. Perf.



227/33 Bright green



Sepia



Blue



Lilac



Yellow



Carmine



Brown-purple



Blue



Brown



Green



Rose



Black

GUATEMALA—continued

Air stamps

Stamps of 1926. Surcharged in red



239

1930. Air stamp. Perf.



251

Carmine

1930. Various views. Perf.



1929. As 1926. Surcharged in black or red

244



Black and carmine

1930. Stamp of 1926. Surcharged in red



246/80

1930-33. Air stamps. Various issues surcharged or overprinted



Stamps of 1926

253/9

Stamp of 1929



241

Air stamp of 1930



260

Stamps of 1929



Broken Dept

Stamps of 1926



247

Stamp of 1929



273

1932. Perf.



272 Carmine

1911. Stamp of 1909 surcharged in black in black



On 6 c., black and bistre

1912. Stamps of 1902 surcharged in black



1913. Stamps as last surcharged in green, blue, or black



156a sur. 40 guq



157 surch in red - 30GV5.

1916. Types of 1902. Surcharged in black or red



156 "2 c." on mauve and green

1917. Perf.



Brown and blue

1918. Perf.



Blue

1919. Centres in black. Perf.



159

Red

Olive

Brown

Green

1919. Perf.



158

Lake

As 1919 and 1902. Surcharged in black or red



165

Overprinted



166 Green

1921. As 1902. Surcharged



167

1921. Perf.



169

Red and blue

Green and brown

Red and black

GUATEMALA—continued

1921. As 1919. Overprinted or surcharged



173

172

1922. Stamps of 1902-21. Surcharged in black or red



174

"12½ c."
on
60 c., black and olive



175



179

180



177



182 c

183 c

184 c



185 c

186 c



187 A

188 A

189 A

190 A

191 A

192 A



183 A

184 A



195

Green



Carmine



198 Green



199 Orange

1924. Perf.

1924. Surcharged



201

211

1925. Perf.



202

Olive

194

Brown

204

Lake

GUATEMALA—continued

1898-1902. Fiscal stamps surcharged. Perf.

In black



91

92

Green (surch. 2 c.)

94

97

96

95

In red

In black



90

In red

92

surcharged

115



Indigo



88

23 w 3m op

1899-1901. Stamps of 1886-94 surcharged

1900. As 1886-94. Colours changed



Purple (thick figure) (red)

Red

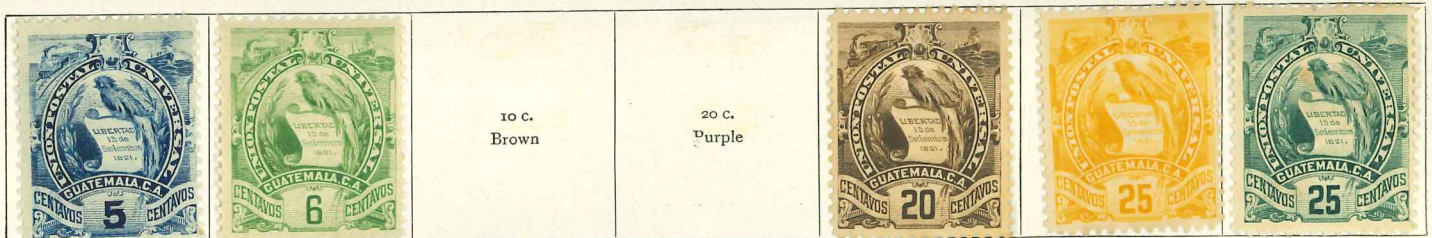
Green

93

100

110

102



10 c.
Brown

20 c.
Purple

103/9

1902. Perf.



Black and lake

Black and blue

Green and yellow

Blue and orange

116

120

GUATEMALA—continued

1902—continued



124/6 Black and purple

Blue and brown

Black and violet

Black and brown

Black and red

1903. Stamps of 1894-96 and 1900 surcharged in black



127/33

128

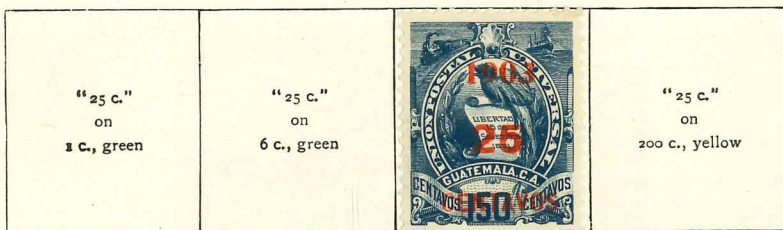
130

132

In red

"25 c." on 1 c., green	"25 c." on 6 c., green	"25 c." on 150 c., blue	"25 c." on 200 c., yellow
------------------------------	------------------------------	-------------------------------	---------------------------------

In red



127 Red

129 Red

133 Red

1907. Perf.



121 Black and blue

1908. Stamps of 1902 and 1907 surcharged



134

136

1909. Perf.



138

1911. Centres in black. Perf.



141

Blue



142

Red

1911. Stamps of 1902 surcharged



144

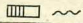
(red surcharge)

145a

145

0127/31 ?

GUATEMALA

1902  DIENSTM.



hellgrün | light green
vert clair

karmin | carm.

blau | blue | bleu

braunviolett
brown violet | violet-brun

orange



1831. Stamps of 1879 surcharged



Green and brown

1881. Perf.



Green and black

1886. Railway stamps of 1 peso surcharged. Perf.



Vermilion

C. f. a. m. Guatem. 26c/26 not cat.


inverted a. 30c.

1886-94. Perf.



Violet

Purple (thicker figure)

	25 c. Orange	50 c. Olive-green	75 c. Rose	100 c. Brown	150 c. Blue	200 c. Yellow
---	-----------------	----------------------	---------------	-----------------	----------------	------------------

1886-95. As last, surcharged in black, blue, or red



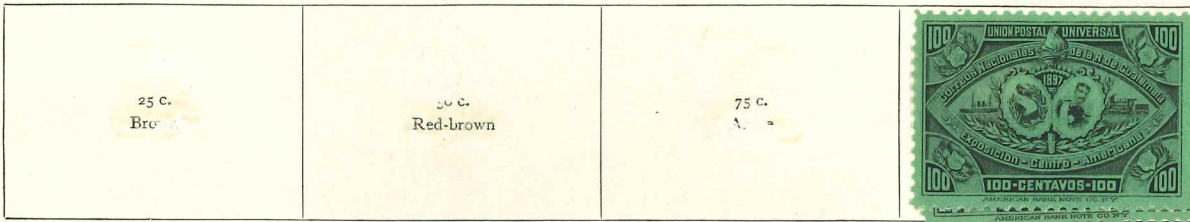
1897. Black on surface-coloured paper. Perf.



Lilac

GUATEMALA—continued

1897—continued



Paper coloured both sides

Not listed (66)

1898. Stamps of 1897 surcharged in violet or red



76

77 Paper coloured both sides (not listed)

not listed

Not listed.

1898. Provisionals
Stamps of 1886-94 surcharged in black

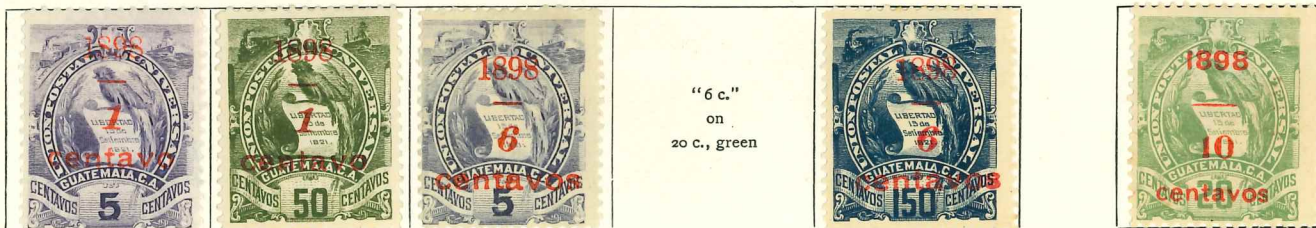


78

79

As last, in red

In red



77a

79b

81

83

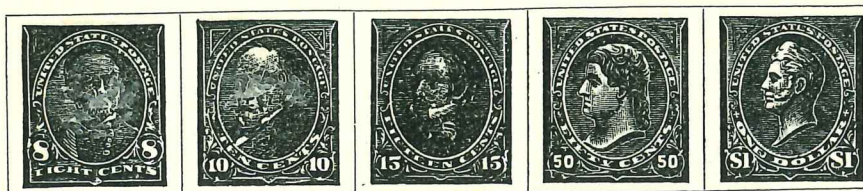
87

GUAM

1899. Stamps of the United States overprinted GUAM



Green Carmine Violet Brown Blue Marone



Purple Brown Olive Orange Black (red)

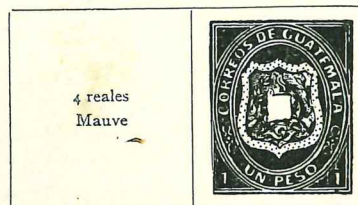
GUATEMALA

1871. Perf.



Bistre

1873. Perf.



4 reales
Mauve

1 peso
Yellow

1875. Perf.



Black

Green

Blue

Red

7/10 All used without gum.

1877. Perf.



Green

1879. Perf.



13/14



Green and brown

15/16

1881. Stamps of 1877 surcharged



Green

17 Ann. Cat. (500 p. No. 18)






5 centavos.

HONDURAS

1866. Black impression

1877. Surcharged

			“ $\frac{1}{2}$ rl.” on 2 r., rose	un real on 2 r., green	“1 rl.” on 2 r., rose	“dos reales” on 2 r., green	“dos reales” on 2 r., rose
Green							

1878. Perf.



(Seebeck Issues SG. 95 to SG. 99 not conf.)

1890. Perf.



1891. Perf.



Black and brown

HONDURAS—continued

1892. Perf.



Slate

1893. Perf.



Red



1895. Perf.

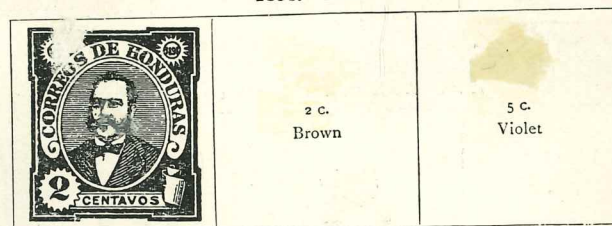


Red

1896. Perf.



99



Blue



1 p.
Sepia

HONDURAS—continued

1898. Perf.



1903. Perf.



Carmine

1907. Perf.



Green



Violet

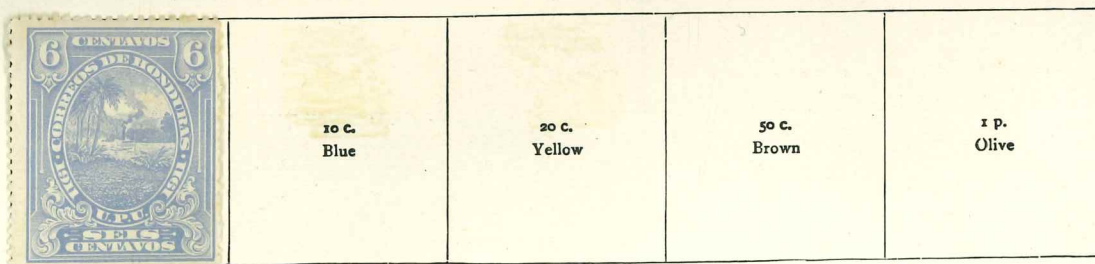
1910. As last, surcharged



1911. Perf.



Green



HONDURAS—continued

1911. Overprinted in red



1913. Issue of 1911 surcharged in black or red



1912. Perf.



Vermilion

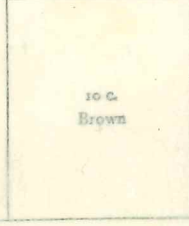
1913. Perf.



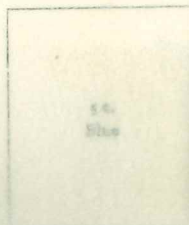
Chocolate



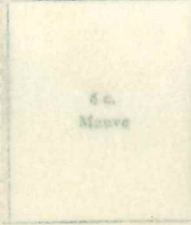
10 c.
Blue



10 c.
Brown



Slate



1914. As last, surcharged in black or red



"1 c."
on
2 c., greenish



"10 c."
on
2 c., carmine



"10 c."
on
50 c., rose

1915. Lithographed. Perf.



Brown



10 c.
Blue

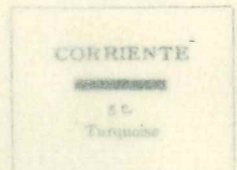


1916. Perf.

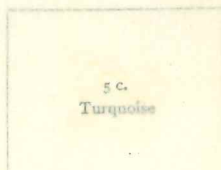


Orange

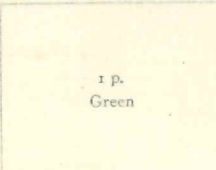
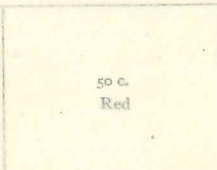
1918. As 1915
Overprinted



CORRIENTE
5 c.
Turquoise



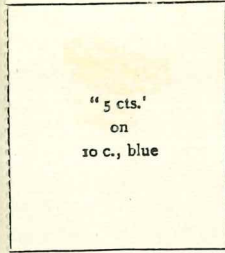
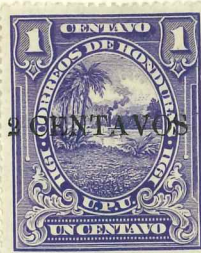
Indigo



1911. Overprinted in red



1913. Issue of 1911 surcharged in black or red



"5 cts."
on
10 c., blue



137

1912. Perf.



Vermilion

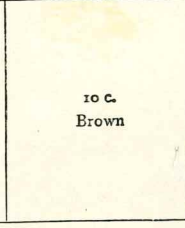
1913. Perf.



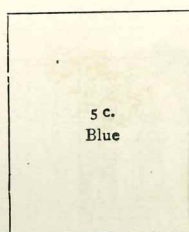
Chocolate



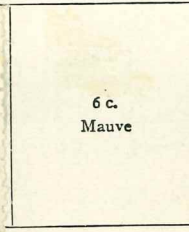
10 c.
Blue



10 c.
Brown



5 c.
Blue



6 c.
Mauve



Slate

1914. As last, surcharged in black or red



"5 c."
on
2 c., carmine

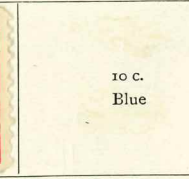


"10 c."
on
2 c., carmine



"10 c."
on
50 c., rose

1915. Lithographed. Perf.



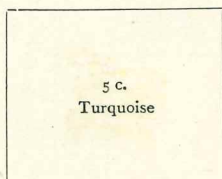
10 c.
Blue



Brown

137 w

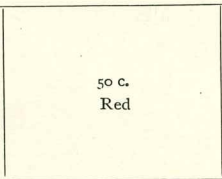
1916. Perf.



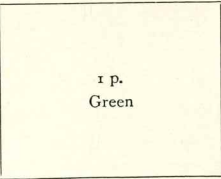
5 c.
Turquoise



Indigo



50 c.
Red



1 p.
Green



Orange


1918. As 1915
Overprinted



CORRIENTE
5 c.
Turquoise


HONDURAS—continued

1919. Perf.

1 c. Brown	2 c. Red	5 c. Magenta	6 c. Purple	10 c. Blue		15 c. Turquoise
---------------	-------------	-----------------	----------------	---------------	---	--------------------

Violet

As last, surcharged in black or green

20 c. Orange-brown	50 c. Brown	1 p. Green	VALE SEIS CTS. on 2 c., red		"50 c." on 2 c., red	"1 p." on 5 c., magenta
-----------------------	----------------	---------------	--------------------------------------	---	----------------------------	-------------------------------

As 1919. Dated 1920


6 c. Purple

1920. Perf.




Rose

1923. Perf.


1 c. Olive	2 c. Rose		10 c. Blue
---------------	--------------	--	---------------

Purple

1925. Perf. or imperf.

	50 c. Red	1 p. Emerald
---	--------------	-----------------

219

	1 c. Carmine	1 c. Brown	1 c. Buff
--	-----------------	---------------	--------------

Blue

1926-27. Types of 1915 and 1919 overprinted or surcharged

In green

Overprinted "1926" only in black or red

HABILITADO 1926 2 c., red	
---------------------------------	---

242

243

6 c. Indigo (Black)	6 c. Indigo (Red)	6 c. Purple
---------------------------	-------------------------	----------------

240

In black and red

In red


In black

Acuerdo Mayo 3 de 1926
HABILITADO 6 c., purple

Vale 6 Cts. 1926
on 10 c., blue

vale 6 cts. 1927
on 15 c., violet

245

"6 c." on 20 c., brown	
------------------------------	---

246

HONDURAS—continued

509

1927-28. Perf.



247

Blue

Red

Lilac

Black

Pale blue

Deep blue



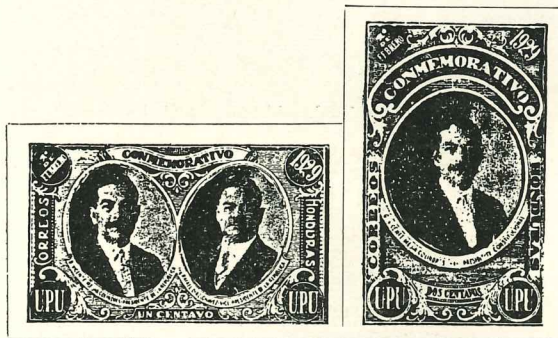
Indigo

Chocolate

Blue-green

Brown-red

1929. Perf.



Lake

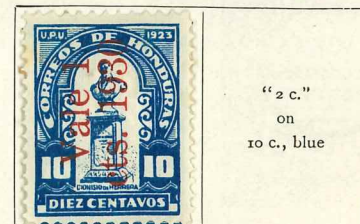
Emerald

Surcharged



267

1930. As 1925, surcharged



"2 c."
on
10 c., blue

1929-32. Air stamps. Various issues overprinted "Servicio aéreo" with various additional inscriptions and surcharges



350 e/k.



HONDURAS—continued

1929. Stamps of 1927-28 overprinted **1929 a 1930** diagonally in various colours



1930. Various issues surcharged

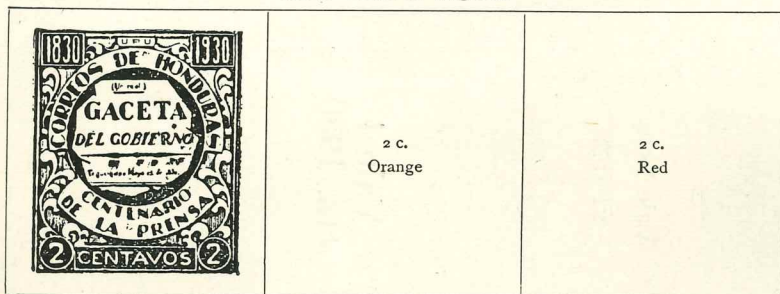
Habilitado para el servicio público 1930



Habilitado julio.—1930



1930. Perf. or imperf.



Blue

2 c.
Orange

2 c.
Red

1930. Air stamps. Perf.



Orange

1931. Various designs. Perf.



1 p.
Chocolate



Sepia



6 c.
Green
(Tegucigalpa Palace)



Brown



Blue

20 c.
Black
(Columbus)



261/6 (1929)



285



299/300



303



340



342



343



347



348



349



350



351



352



341



349



0390/7 (1935)



SC 268/79.

1929 / Overprinted to prevent use of looked stocks / wide colour range reading upwards, downwards.

ct.

Made and Printed in England









N 583 (1933)



133 - Not issued - President Madero overthrown and shot.



072 (1914)



0160c



0160



0159



0212



M 141/3



Fiscal



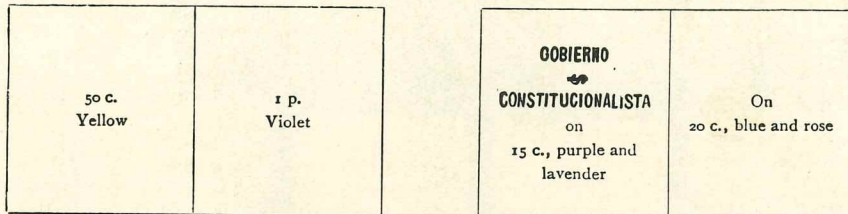
MEXICO—continued
 REVOLUTIONARY ISSUES, 1913-15

1914. Lithographed. Perf.



Carmine

Mexico issue of 1899 overprinted in black



Mexico issue of 1910 overprinted as last in black or violet

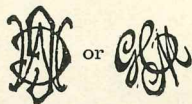


CV 20

'G' in conflict.



Overprinted



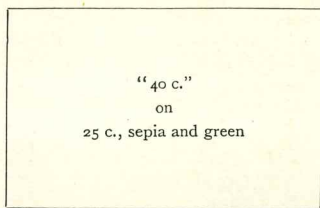
On issue of 1910



CV 21



1932—continued



520



528

Blue



Green



530

10 c.
Blue

1 p.
Violet

532

1933. Rouletted

Air stamps. Centres in violet. Perf.



533

Red



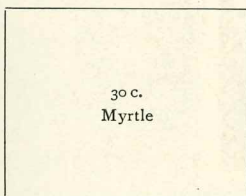
538

20 c.
Blue

1934. As 1923. Perf.

1934. As 1923.
Rouletted

1934. Various designs inscribed "PRO UNIVERSIDAD". Perf.



30 c.
Myrtle



543

Orange



Air stamps



5 p.
Brown and sepia

10 p.
Violet and brown



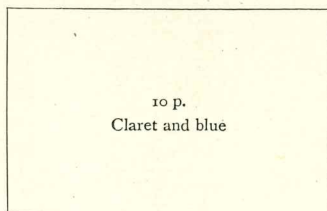
553

Orange

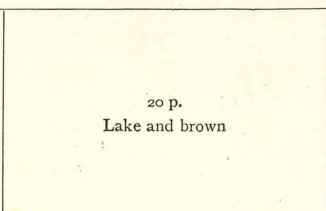


5 p.
Deep blue and brown

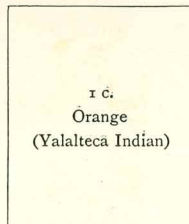
1934-35. Various designs. Perf.



10 p.
Claret and blue



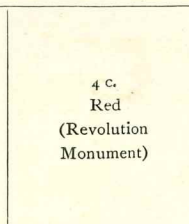
20 p.
Lake and brown



1 c.
Orange
(Yalalteca Indian)



4 c.
Red
(Revolution
Monument)



5 c.
Brown
(Los Rios
Aqueduct)

541

Green

544

MEXICO—continued

1934-35—continued



10 C.
Blue
(Cross of Palenque)



Grey-green

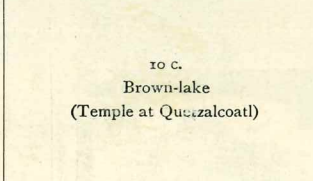
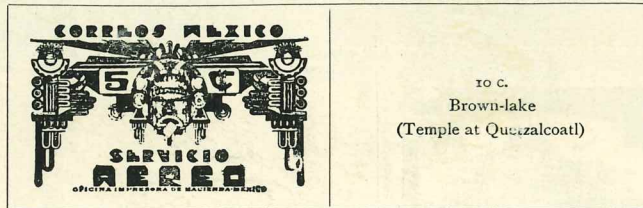
363



5 P.
Violet and orange
(Mexican)

Vermilion and brown

Air stamps



10 C.
Brown-lake
(Temple at Quetzalcoatl)

Black

573



15 C.
Grey-green
(Aeroplane over Citlalpetet)

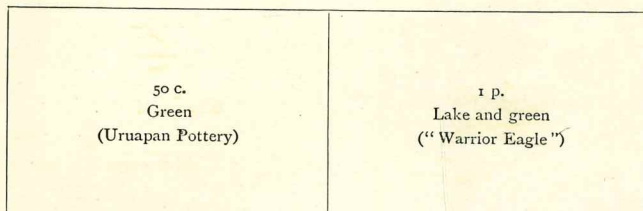


30 C.
Brown
(Pegasus)

Red



Blue

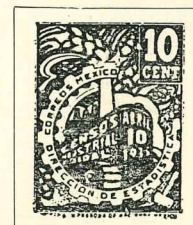


50 C.
Green
(Uruapan Pottery)

1 P.
Lake and green
(“Warrior Eagle”)



580 Black and red



581 Violet



592 Blue

1935. Perf.

Postage stamp



583 Violet

1935. Perf.

Air stamp



Vermilion

1936. Various designs. Perf.



591 1/2

Grey-green and sepia


Air stamps



Orange and violet

MEXICO—continued



1929—continued

	35 c. Greenish blue	1 p. Blue and black	5 p. Blue and carmine
---	------------------------	------------------------	--------------------------




As last. Rouletted

10 p. Sepia and violet			25 c. Purple
---------------------------	--	---	-----------------

Air stamps. Perf.

50 c. Brown-lake		40 c. Green	1930. Air stamp of 1929 overprinted. Perf. 
---------------------	--	----------------	---

1930. As 1926. Overprinted

HABILITADO 1930 2 c., red		5 c. Orange	10 c. Carmine		30 c. Blue-green	
---------------------------------	---	----------------	------------------	---	---------------------	---

"Carranza" Air stamps. Overprinted as last

1 p. Blue and brown			As 1929. Surcharged HABILITADO \$0.01 on 2 c., grey-green	
------------------------	---	--	--	---

1930. Carranza Air stamps of 1929. Overprinted

			
---	---	--	---

MEXICO—continued

1930—continued

1930. Air stamps. Rouletted



Optd. "GOBIERNO \$ CONSTITUCIONALISTA" and "PRO INFANCIA"



504 Purple



505 Brown and blue

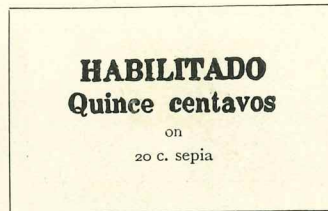
1931

Air stamp. Perf. or Imperf.



506 Lake

Air stamp as 1930. Surchd. Perf. or rouletted



516

As 1926. Overprinted "HABILITADO 1931"

4 c. Green	5 c. Orange	10 c. Carmine	20 c. Blue	30 c. Blue-green	40 c. Violet	1 p. Blue and brown
---------------	----------------	------------------	---------------	---------------------	-----------------	------------------------

508/14

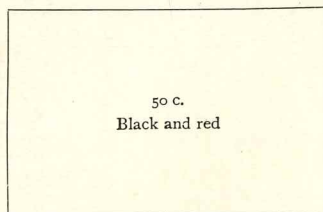
1932. Carranza Air stamps of 1929. Overprinted



10 c.
Red and sepia

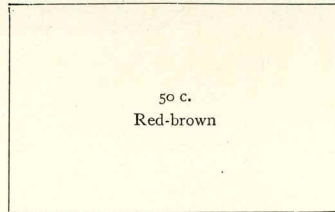
523

Air stamp as 1929. Perf.



50 c.
Black and red

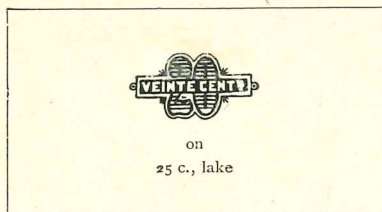
527



50 c.
Red-brown

1932. Various Air stamps surcharged

As 1931. Perf. or imperf.



on
25 c., lake

517

As 1930. Surchd. as last Rouletted



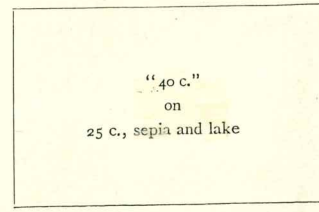
522

As 1930. Rouletted or perf.



on
20 c., sepia

As 1927-28. Surchd. as last Perf.



"40 c."
on
25 c., sepia and lake

519

MEXICO—continued

73I

1917. Engraved
Various portraits. Rouletted



392 Purple



395a Lilac

1 c.
Grey

2 c.
Green
(Vasquez)

3 c.
Brown
(Suarez)

4 c.
(Carranza)

5 c.
Ultramarine
(Herrera)

As last. Perf.



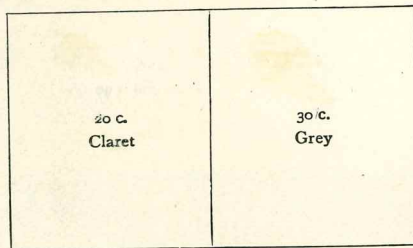
1 c.
Lilac

2 c.
Green

5 c.
Ultramarine

10 c.
Blue

1919. As last. Surcharged as + 3¢
in red



20 c.
Claret

30 c.
Grey



"+5 c."
on
10 c., blue

1921-22. Perf.

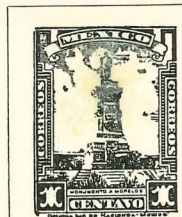


415 Sepia and blue

1923. Rouletted



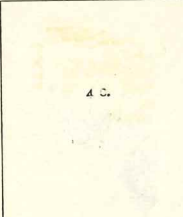
446 Black and sepia



436 Brown



Scarlet



4 c.

440



Orange



453 Orange



442



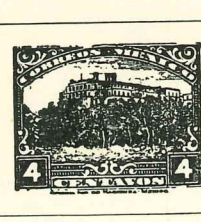
Blue



444 Myrtle



438 Brown



421 Green

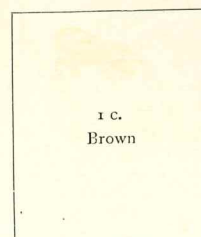


423 Brown

1923. As above. Perf.



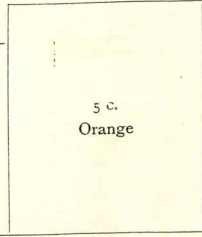
417 Rose and blue



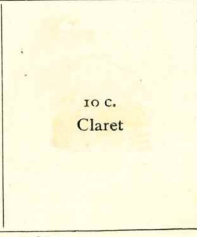
1 c.
Brown



4 c.
Green



5 c.
Orange



10 c.
Claret

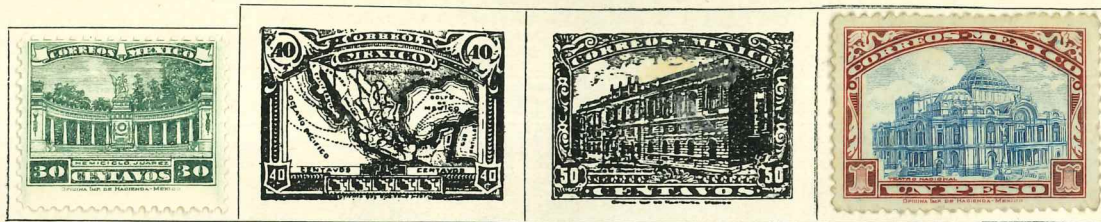
427

428

431

MEXICO—continued

1923 (Perf.)—continued



432 Violet 433 Violet 434 Brown 435 Blue and claret

1926. Perf.



20 C. Blue 40 C. Violet

Blue-green

Air stamps. As 1922. Perf.



441 Blue and brown

444

As 1923. Overprinted

Rouletted

1929

Rouletted

"Carranza" Air stamps. Perf.



457

468

Violet

469

460/461

Grey-green

468/8

Sepia and olive



Air stamps. Perf.



10 C. Violet

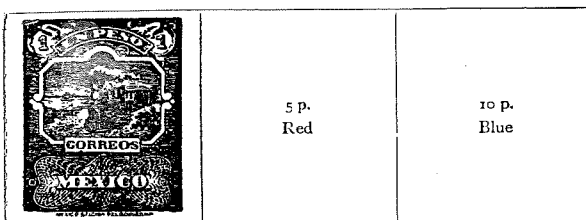
469

Sepia

MEXICO—continued

729

1895-98—continued



Brown

1899. Wmk. "SERVICIO POSTAL DE LOS ESTADOS UNIDOS MEXICANOS" in sheet. Perf.



Green

Red

Chestnut

Rose

Blue

Chestnut and lilac

Claret and lavender



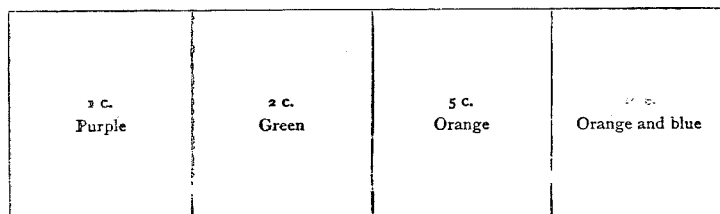
Blue and red

Black and claret

Black and blue

Black and lake

1903. As 1899. Colours changed



1910. Centres in first colour. Wmk. as before. Perf.



Dull purple

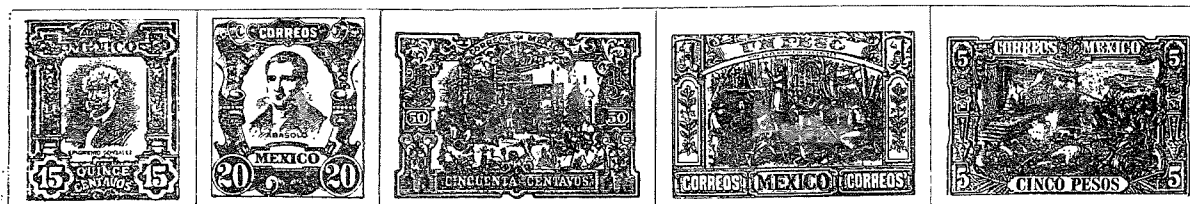
Green

Chestnut

Carmine

Orange

Orange and blue



Lake and ultramarine

Blue and red

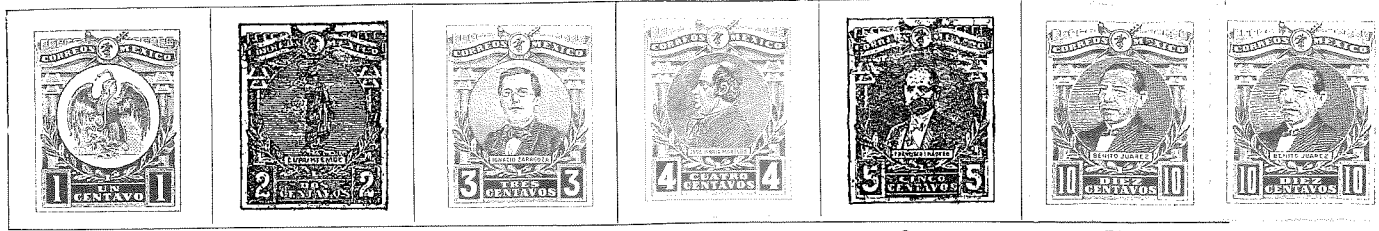
Black and lake

Black and blue

Black and claret

MEXICO—continued

1915. Lithographed. Roul.



Violet

Green

Brown

Rose

Orange

Blue

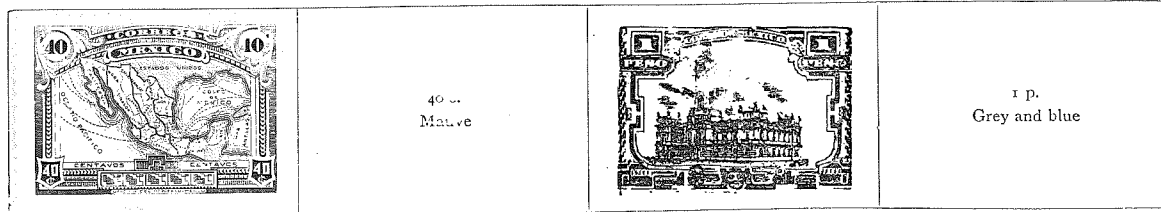
Same types. Perf.



5 c.
Orange

10 c.
Blue

Engraved. Perf.

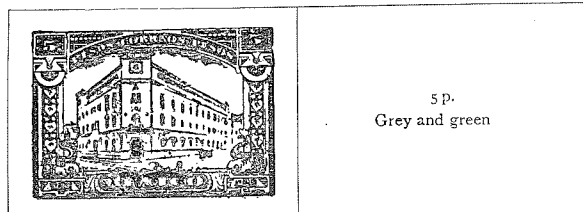


Slate

40 c.
Mauve

Black and brown

1 p.
Grey and blue

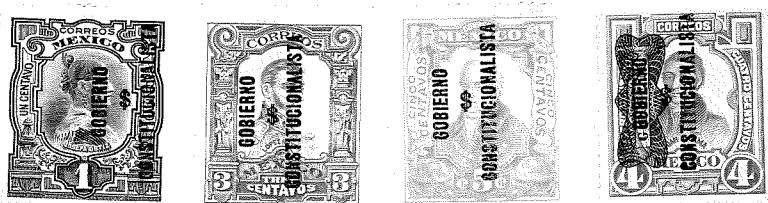


Blue and lake

5 p.
Grey and green

1916. Stamps of 1910 (sometimes with Revolutionary overprints)




overprinted  or 









MEXICO—continued

727

1879. Overprinted as last. Perf.


1 c. Brown	2 c. Purple	5 c. Orange				24 c. Violet
---------------	----------------	----------------	--	---	---	-----------------

			50 c. Yellow		100 c. Black		
---	---	---	-----------------	--	-----------------	---	---



Rose

1884. Perf.

1882. Overprinted as last. Perf.

	3 c. Crimson	6 c. Blue
--	-----------------	--------------

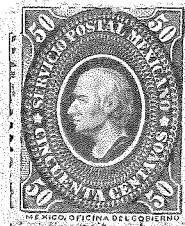
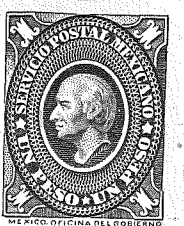



Green

		3 c. Green
---	--	---------------

Deep green

4 c. Green	5 c. Green	6 c. Green	10 c. Green	12 c. Green	20 c. Green	25 c. Green
---------------	---------------	---------------	----------------	----------------	----------------	----------------

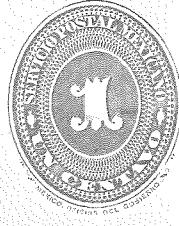
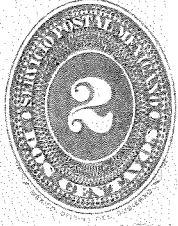
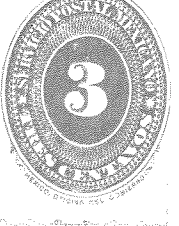



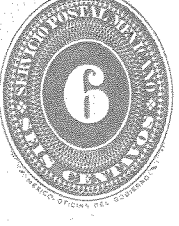



1885. As 1884

			5 p. Blue	10 p. Blue		
---	---	---	--------------	---------------	---	---

3 c. Chestnut	4 c. Red	5 c. Blue	6 c. Brown	10 c. Orange	12 c. Sepia	25 c. Blue
------------------	-------------	--------------	---------------	-----------------	----------------	---------------

MEXICO—continued



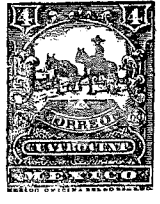


1886-92. Perf.

		3 c. Lilac			4 c. Lilac
Green					
	4 c. Orange		6 c. Lilac	6 c. Scarlet	
10 c. Lilac		10 c. Orange	12 c. Lilac	20 c. Lilac	
20 c. Orange	25 c. Lilac		25 c. Orange	5 pesos Crimson	10 pesos Crimson

1892. As 1884. New values

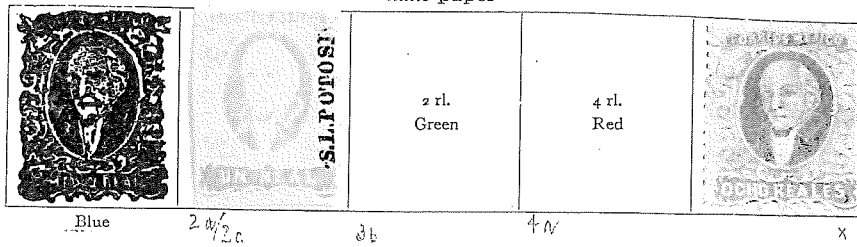
5 pesos Green	10 pesos Green
------------------	-------------------

1895-98. Various wmks. (or no wmks.). Perf.

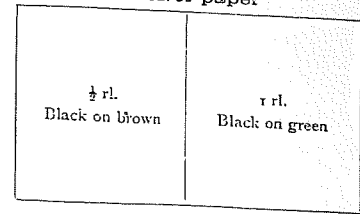
		3 c. Chestnut	
Green			Orange
		12 c. Sepia (as 4 c.)	15 c. Greenish blue (as 10 c.)
Ultramarine	Rose-lilac		
		20 c. Dull rose	50 c. Violet

MEXICO

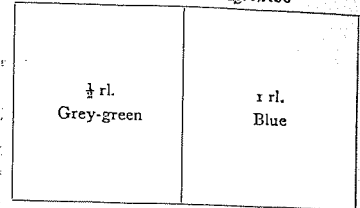
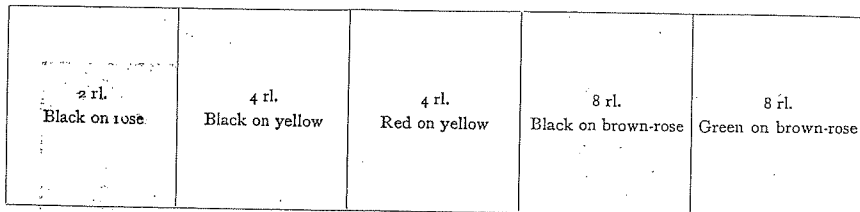
1856-67. Overprinted with name of district. Imperf.
White paper



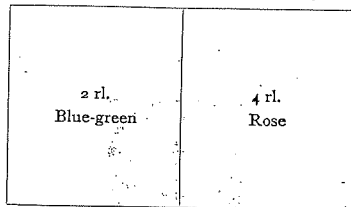
Coloured paper



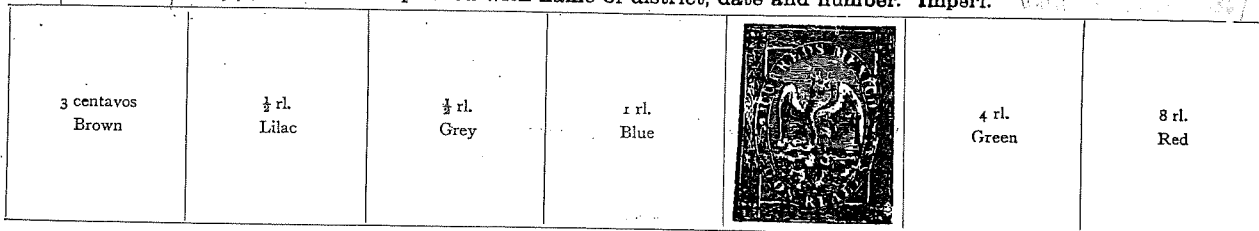
Thin grey-blue paper
Overprinted "Mexico"



1863. Perf.



1864. Overprinted with name of district, date and number. Imperf.

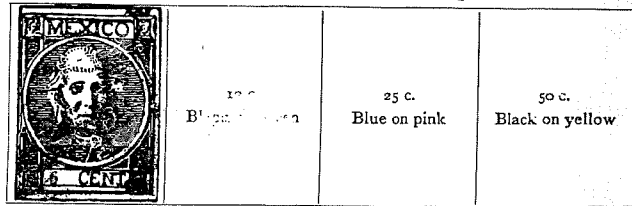


Yellow

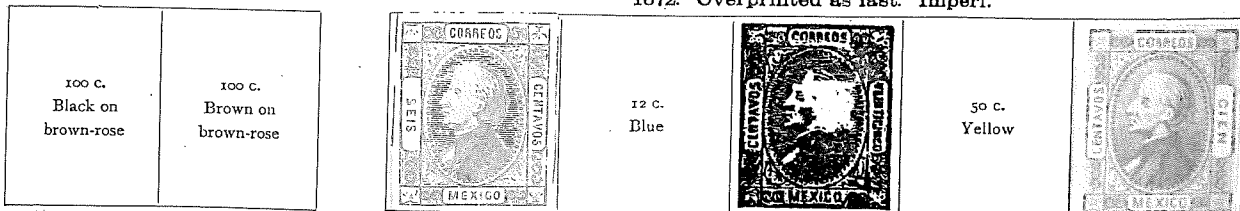
1863. Overprinted with name, number, and date. Imperf.



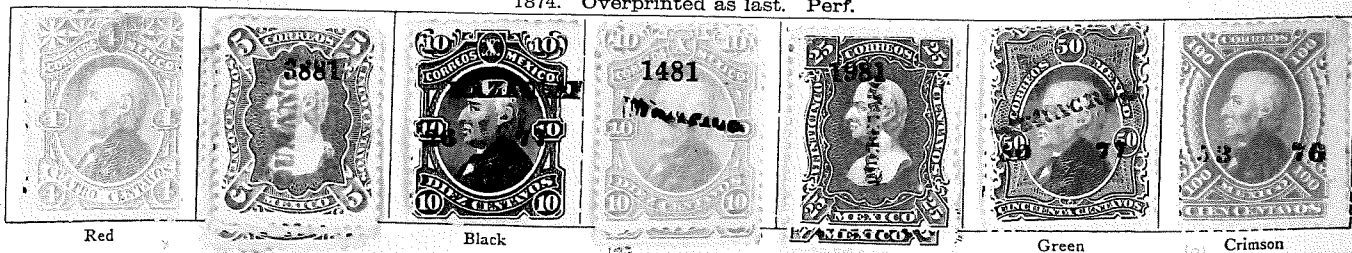
1868. Overprinted as last. Imperf.



1872. Overprinted as last. Imperf.

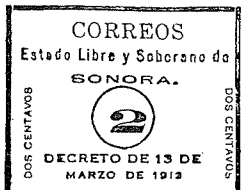


1874. Overprinted as last. Perf.



SONORA

1913. Type-set. Rouletted. With "Constitucional" embossed in white

1 c. Black and red	 <p>CORREOS Estado Libre y Soberano de SONORA. 2 DECRETO DE 13 DE MARZO DE 1913</p>	3 c. Black and red	5 c. Black and red	10 c. Black and red
-----------------------	--	-----------------------	-----------------------	------------------------

Black and red

1913. Lithographed. Rouletted

1 c. Black, red, and green	2 c. Black, red, and green	 <p>Estado Libre y Soberano de SONORA 5 CINCO CENTAVOS</p>	5 c. Black, red, and green	10 c. Black, red, and green
-------------------------------	-------------------------------	--	-------------------------------	--------------------------------

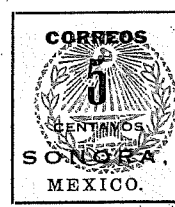
Black, red, and green

Oct., 1914. Value and inscription in black

 <p>CORREOS 1 CENTAVO SONORA. MEXICO</p>	 <p>CORREOS 2 CENTAVOS SONORA. MEXICO</p>	 <p>CORREOS 5 CENTAVOS SONORA. MEXICO</p>	 <p>CORREOS 10 CENTAVOS PLATA SONORA. MEXICO.</p>	 <p>CORREOS 20 CENTAVOS SONORA. MEXICO</p>	 <p>CORREOS 50 CENTAVOS SONORA. MEXICO</p>
--	---	--	---	--	--

Blue and red

588 Locality seal 1911/16
No gum? reprints.



588 A-wil



C-22



588 Loc 1



C-25



C-27



C-28 Loc 1 reprints



A-100 Loc 1 reprints



A-100 Loc 1 reprints



SALVADOR—continued

1023

1935. Perf.
Postage stamps



Red 6/14

Air stamps



Brown

As last. Overprinted **HABILITADO**
Postage stamps



5 c.
Red

Air stamps

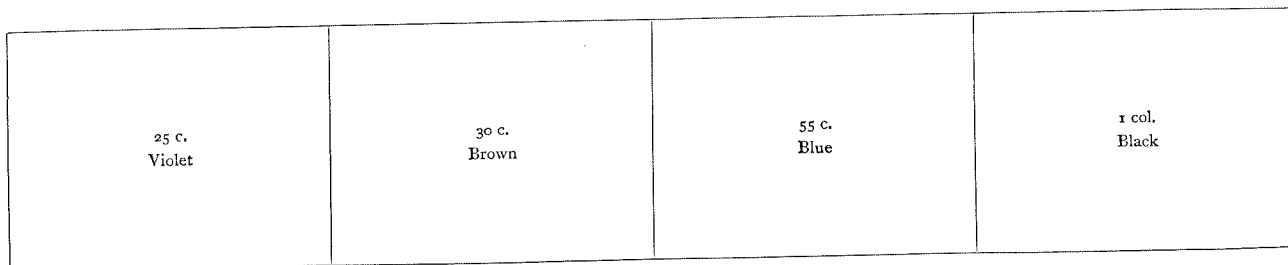


10 c.
Yellow

15 c.
Ochre



15 c.
Red



25 c.
Violet

30 c.
Brown

55 c.
Blue

1 col.
Black

1935. Perf.

Air stamp



2 c.
Chocolate

30 c.
Blackish brown
(Inscribed
"SERVICIO-
AEREO")

Turquoise

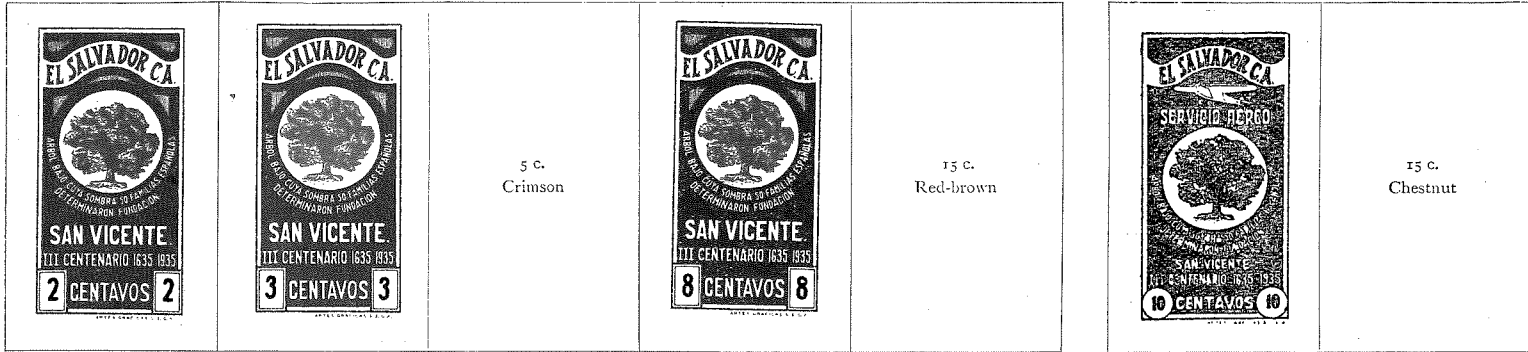
4/15

SALVADOR—continued

1935. Centres in green. Perf.

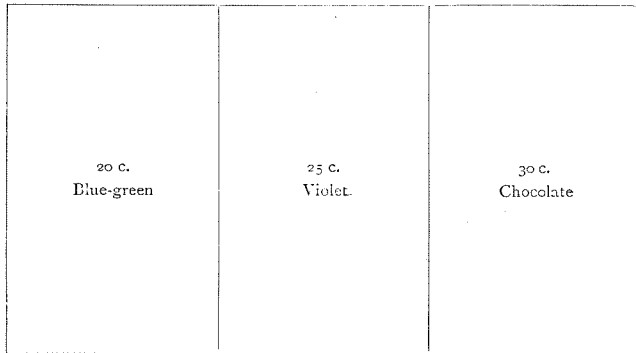
Postage stamps

Air stamps



Chocolate

Yellow



Various designs. Perf.



Violet

Brown

Green



Blue

Orange

Bistre

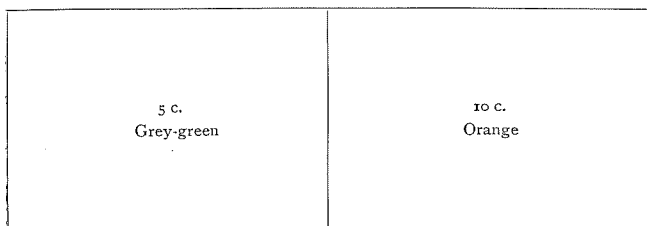


SALVADOR—continued

1021

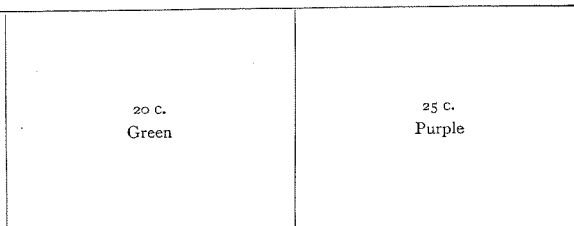
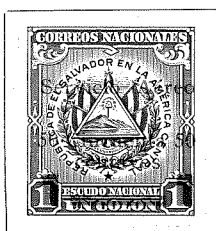
1930—continued

1930. Air stamps. As 1924-26. Surcharged



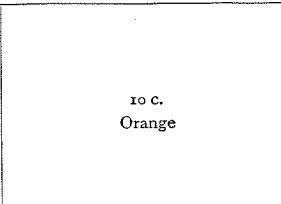
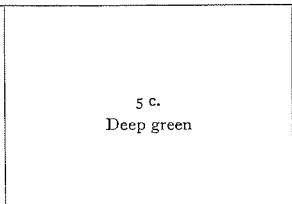
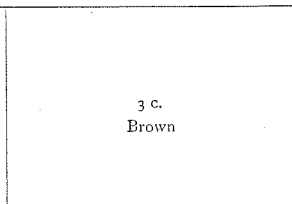
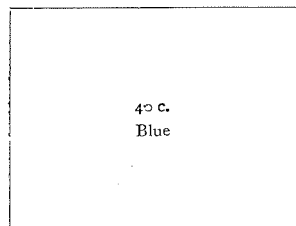
As last. Overprinted only

1930. Air stamps. Perf.



Scarlet

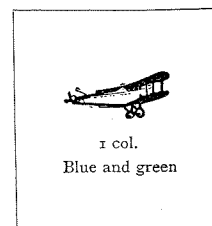
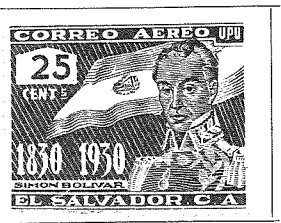
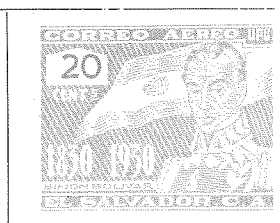
1930. Perf.



Violet

Air stamps

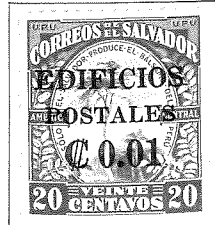
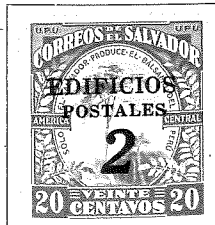
As 1926. Overprinted



Red

Air stamps. Perf.

1931. As 1924-25. Surcharged



Green

SALVADOR—continued

1931—continued



1932. Overprinted 1932



Purple Red Brown Black



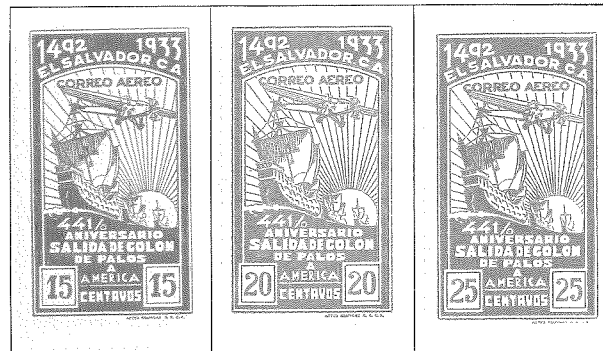
Blue Orange Green Green and rose Red-brown Blue and green

1932. Air stamps. Perf.



Red and violet

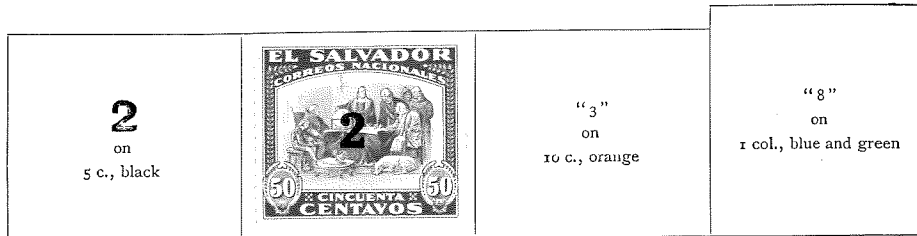
1933. Air stamps. Perf.



Vermilion



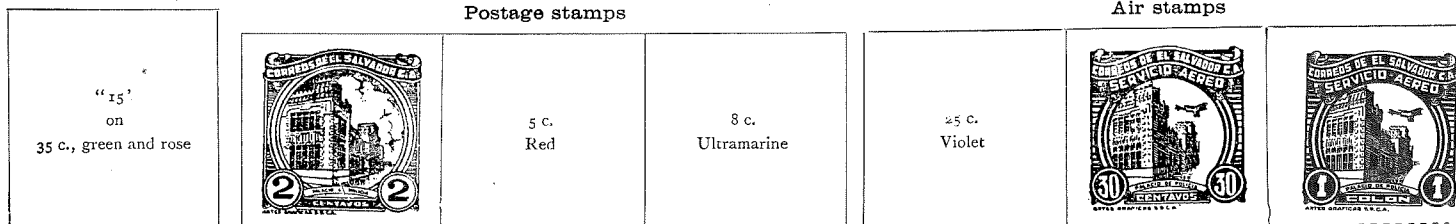
1934. Stamps of 1924-26. Surcharged



1934 Perf.

Postage stamps


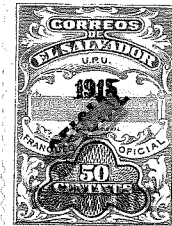
Air stamps





Chocolate

Brown



1918. Official stamps of 1915 overprinted

<p>CORRIENTE</p>  <p>1 c., green</p>	<p>2 c. Red</p>	<p>5 c. Ultramarine</p>	<p>6 c. Blue</p>	<p>10 c. Yellow</p>	<p>12 c. Red-brown</p>	
--	---------------------	-----------------------------	----------------------	-------------------------	----------------------------	---

Official stamps of 1916 surcharged or overprinted in red

 <p>Un Centavo on 6 c., violet</p>	 <p>Un Centavo on 6 c., violet</p>	<p>5 c. Blue</p>	<p>6 c. Violet</p>
---	---	----------------------	------------------------


Stamps of 1916 surcharged
In red In black

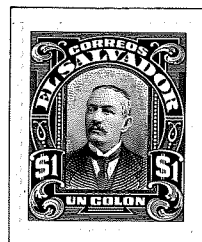
 <p>1 CENTAVO on 6 c., violet</p>	 <p>1 CENTAVO on 6 c., violet</p>
--	--

1919. Stamps of 1916 variously surcharged in black or red

<p>"1 c." on 12 c., purple</p>	<p>1 1 Centavo on 17 c., orange</p>	<p>"2 c." on 10 c., sepia</p>	<p>VALE 5 Centavos on 50 c., slate</p>	<p>6 SEIS on 25 c., brown</p>	<p>15 on 29 c., black</p>
--	---	---------------------------------------	--	---------------------------------------	-------------------------------

1919. Perf.

<p>"26 c." on 29 c., black</p>	
--	---







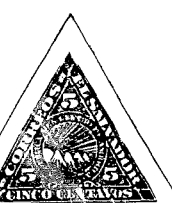
As last. Surcharged

<p>"60 c." on 1 col., black and blue</p>
--

1919. Municipal stamps surcharged

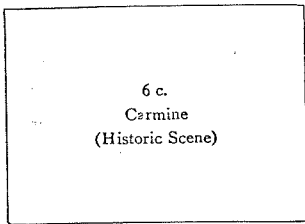
	<p>Correos Un centavo 1919</p>				
---	--	---	--	---	---

1921. Perf.

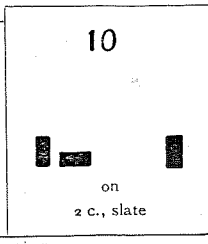
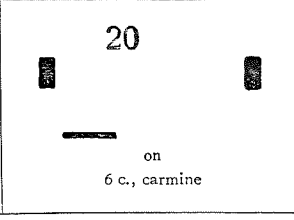
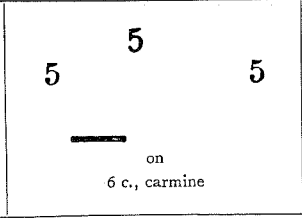
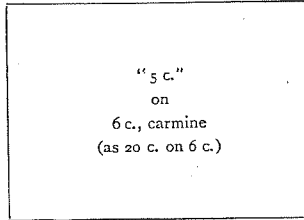
 <p>Green</p>		 <p>Blue</p>	<p>25 c. Olive (Morazan)</p>	 <p>Violet</p>	<p>1 col. Sepia (Colon)</p>	 <p>Orange</p>
--	---	---	--------------------------------------	---	-------------------------------------	---

SALVADOR—continued

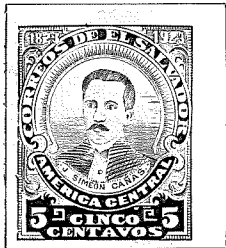
1921—continued



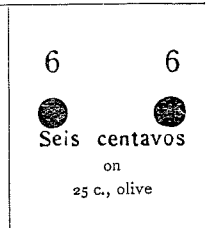
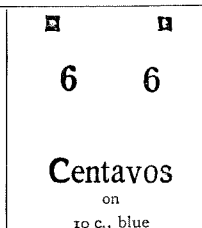
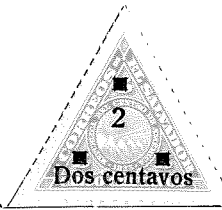
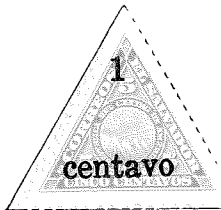
1923. As last. Surcharged in black or red



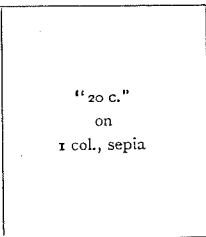
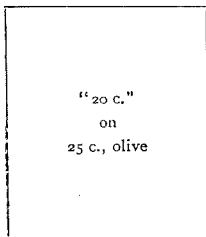
1923. Perf.



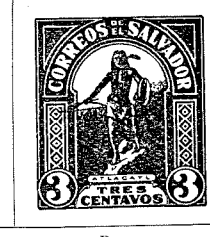
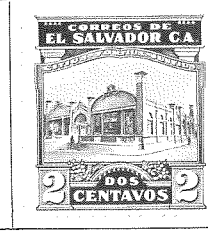
1924. As 1921. Various surcharged in black or red



Surcharged in red



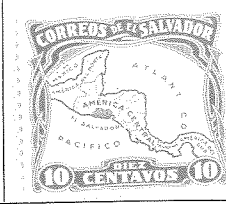
1924-25. Perf.



Purple

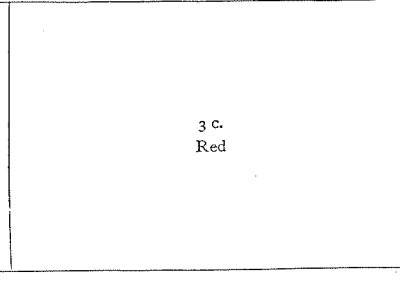
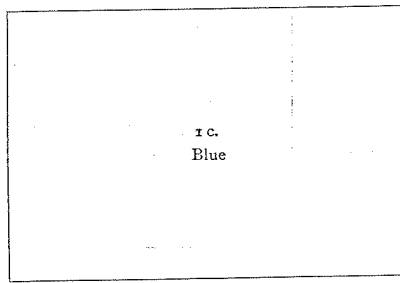
Red

Brown



1925. Perf.

Surcharged in red



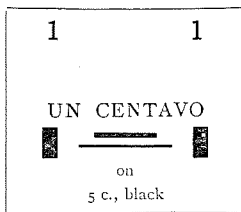
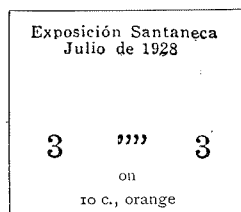
Green

1928. Perf.

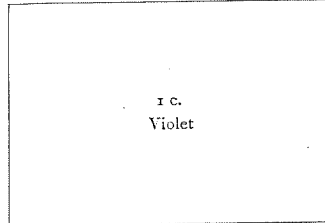


Blue and green

1928. As 1924-25. Surcharged In blue In red



1930. Portraits in purple. Perf.



Brown

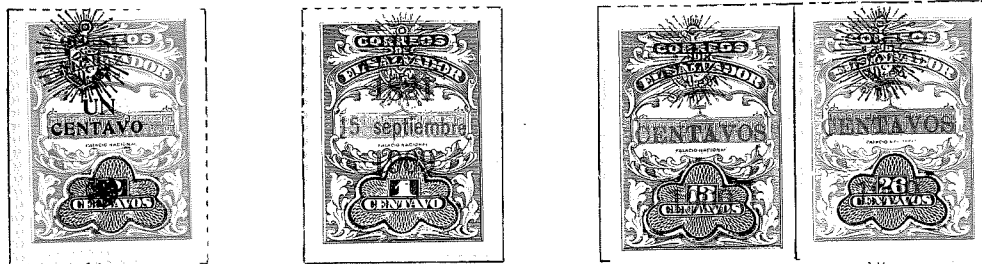
SALVADOR—continued

1017

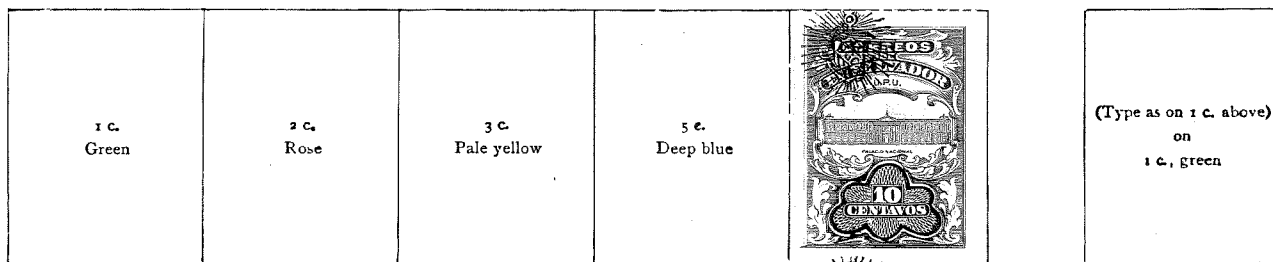
1907—continued



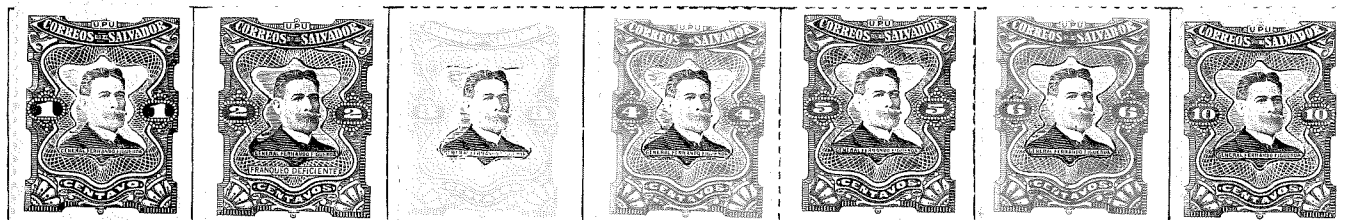
1908-9. Stamps as above surcharged or overprinted



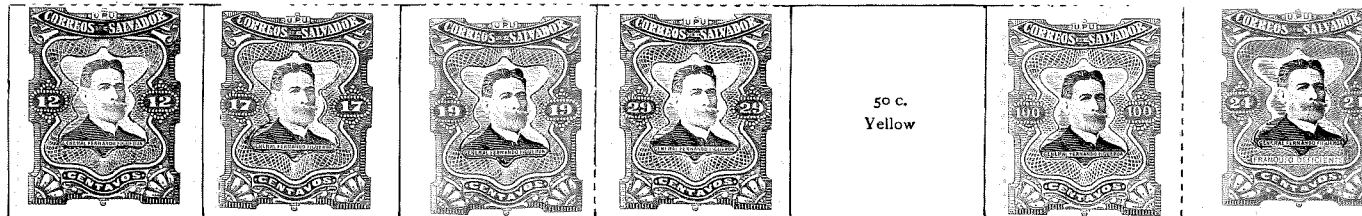
1909-10. As 1907, but wmk. "Circles." Perf.



1910. Head in black. Wmk. as last. Perf.



Brown



50 c.
Yellow

1911. Centres in brown. Perf.

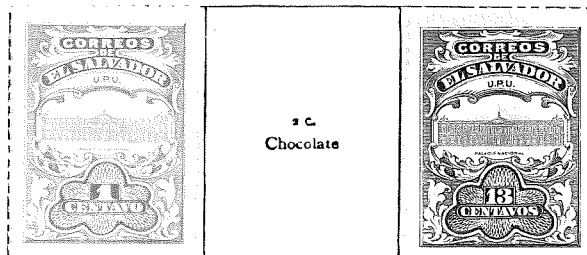


Blue

Orange

Red

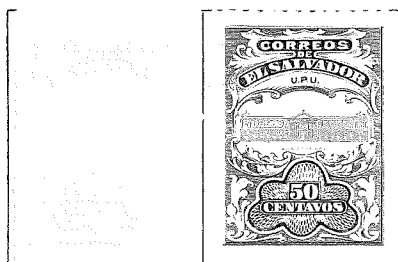
As 1907. Without shield. Single colours



1 c.
Chocolate

SALVADOR—continued

1911—continued



1912. Centres in first colour. Perf.

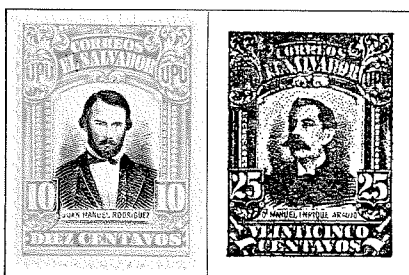


Black and blue Black and brown Black and scarlet Black and green



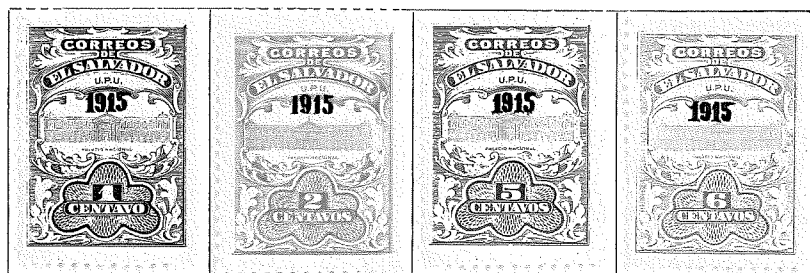
Black and olive Grey and purple Grey and scarlet Grey and orange Grey and blue Grey and black

1914. Perf.



Brown and orange Brown and violet

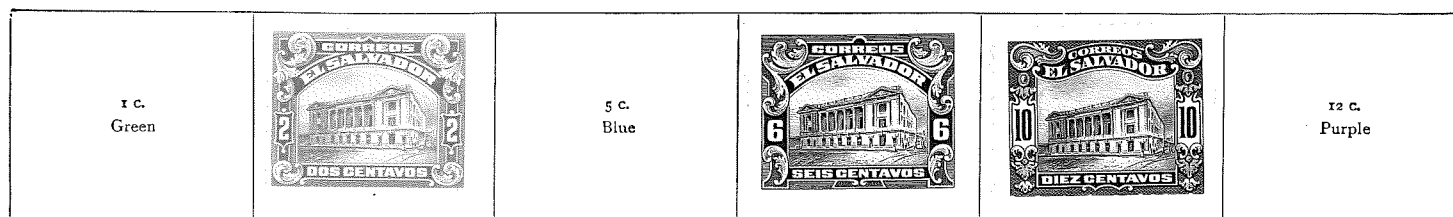
1915. Type as 1907. No shield. Overprinted "1915" in black



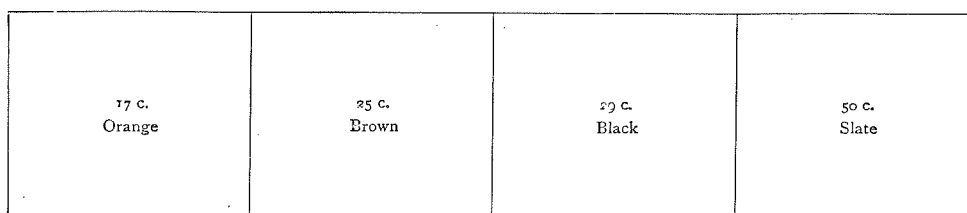
Green



1916. Perf.



Vermilion





SALVADOR—continued



1015

1900—continued



Stamps of 1899, with Wheel, similarly surcharged. "Centavo" in singular

	"1 c." on 13 c., carmine	"2 c." on 12 c., green		"3 c." on 12 c., green	"5 c." on 24 c., pale blue	"5 c." on 26 c., rose
---	--------------------------------	------------------------------	--	------------------------------	----------------------------------	-----------------------------



1900-1. Stamps as 1899 (Woman) without Wheel and dated "1900" overprinted with shield in violet or black

	1 c. Green	2 c. Rose	3 c. Black	5 c. Blue	10 c. Blue	12 c. Green	
---	---------------	--------------	---------------	--------------	---------------	----------------	---





1902. As last, surcharged





		50 c. Rose	1 centavo on 2 c., rose	"1 c." on 3 c., black	"1 c." on 5 c., blue
--	--	---------------	--------------------------------------	-----------------------------	----------------------------

1903. Perf.

1 c. Green			5 c. Blue	10 c. Purple	12 c. Slate	13 c. Chocolate
---------------	---	---	--------------	-----------------	----------------	--------------------

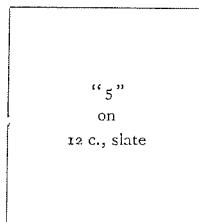
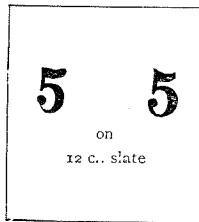
1905. As last, surcharged in black, blue, or red

24 c. Scarlet	26 c. Brown			1 1 1 CENTAVO 1 on 2 c., carmine		
------------------	----------------	---	--	---	---	---

"1 c." on 13 c., chocolate	"6 c." on 12 c., slate	"6 c." on 13 c., chocolate				
----------------------------------	------------------------------	----------------------------------	--	---	---	---

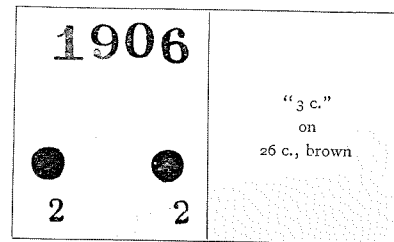
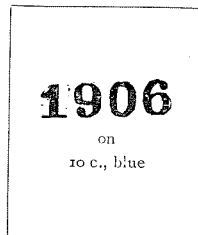
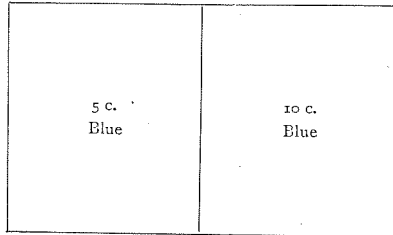
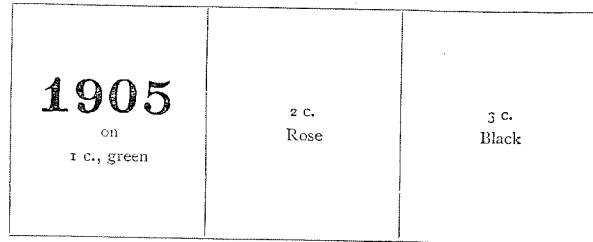
SALVADOR—continued

1905—continued
As last, but figures
in all corners



On 12 c., slate

1905-6. Stamps of 1900-1 overprinted or surcharged in
purple, blue, or black
With small shield in *black*



On 26 c., brown

1906. Centre in *black*. Perf.



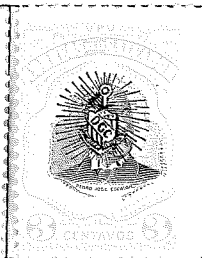
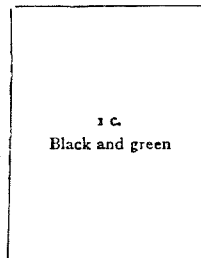
Green



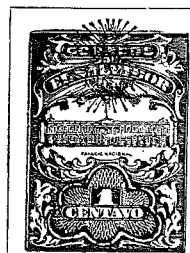
As last, overprinted with small shield in *black*

No surcharge

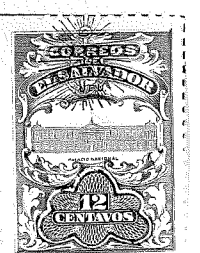
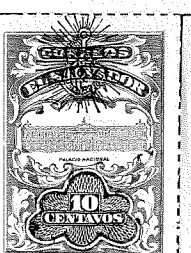
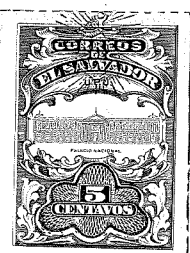
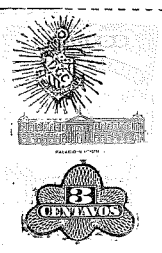
With surcharge in addition



1907. Centre and label in *black*. Perf.



2 c.
Red



Green

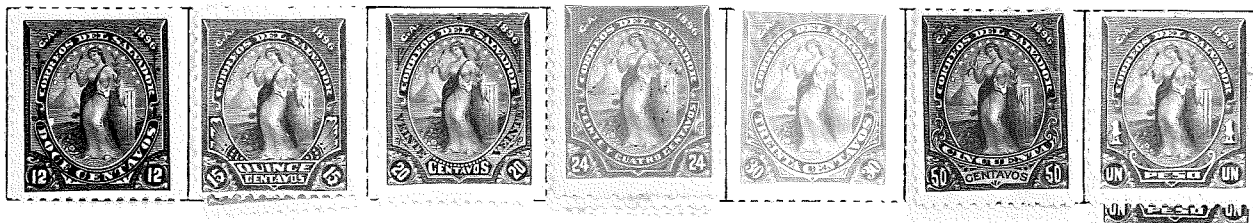
In black



1896. Perf.



Brown



1896. Perf.



Green

Lake

Yellow-brown

Brown

Brown

Slate

Green

Surcharged



Rose

Violet

Green

Orange

Violet

1897. As 1896. Colours changed



As last, surcharged



Perf.



Blue, rose, etc.

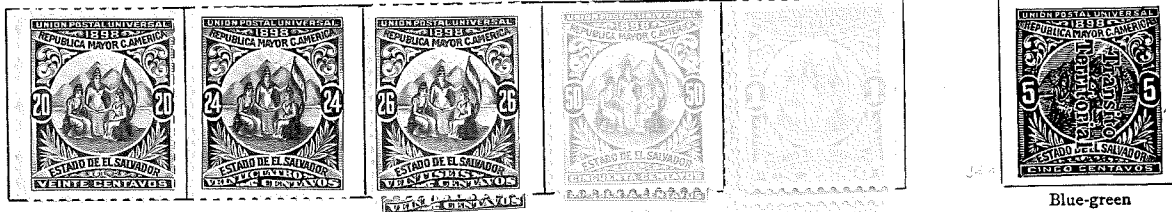
SALVADOR—continued

1898. Perf.




Vermilion

Overprinted in black, violet, or red



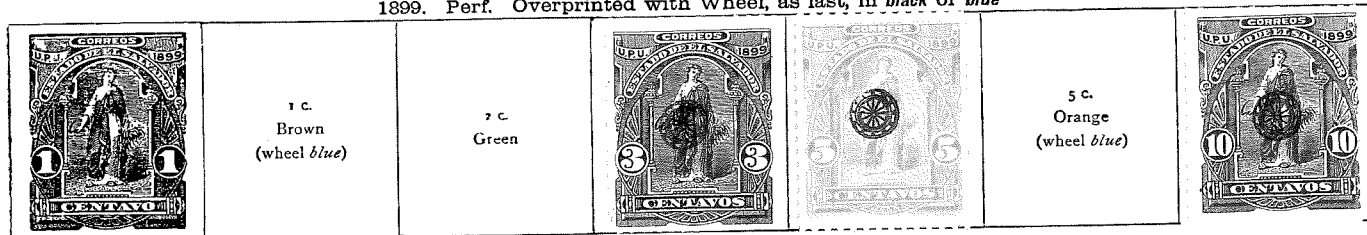
Blue-green

End of Webster reports

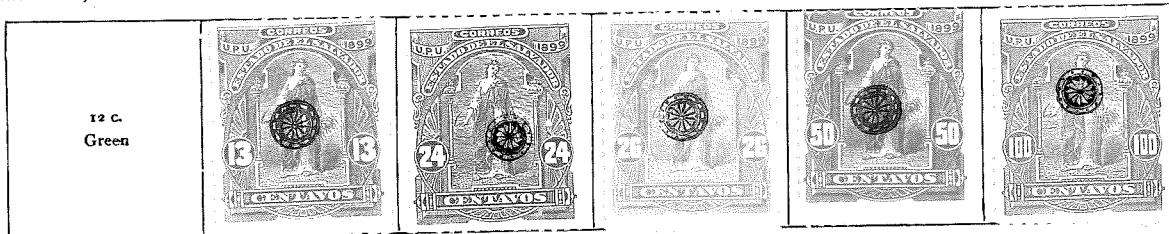
1899. As 1898, overprinted with small Wheel  in black

1 c. Vermilion	2 c. Rose	3 c. Green	5 c. Blue-green	10 c. Blue	12 c. Purple	13 c. Brown-lake
-------------------	--------------	---------------	--------------------	---------------	-----------------	---------------------

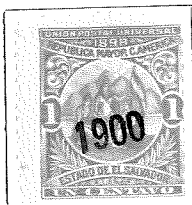
1899. Perf. Overprinted with Wheel, as last, in black or blue



1011 Brown (wheel black)



1900. Stamps of 1898 overprinted "1900"
Tall figures



1900
on
1 c., vermillion

Stamps of 1898 surcharged. "Centavo" in singular

"1 c." on 10 c., blue	"1 c." on 13 c., brown-lake	"2 c." on 12 c., purple	"2 c." on 13 c., brown-lake	"2 c." on 20 c., blue
-----------------------------	-----------------------------------	-------------------------------	-----------------------------------	-----------------------------

1012 Similarly surcharged,
but "Centavos" in plural

1900 3 centavo on 12 c., purple	"3 c." on 50 c., orange	"5 c." on 24 c., indigo	"5 c." on 26 c., brown	"5 c." on 1 peso, yellow	"2 c." on 12 c., purple	"5 c." on 24 c., indigo
---	-------------------------------	-------------------------------	------------------------------	--------------------------------	-------------------------------	-------------------------------

SALVADOR—continued

1890—continued



1891. Perf.

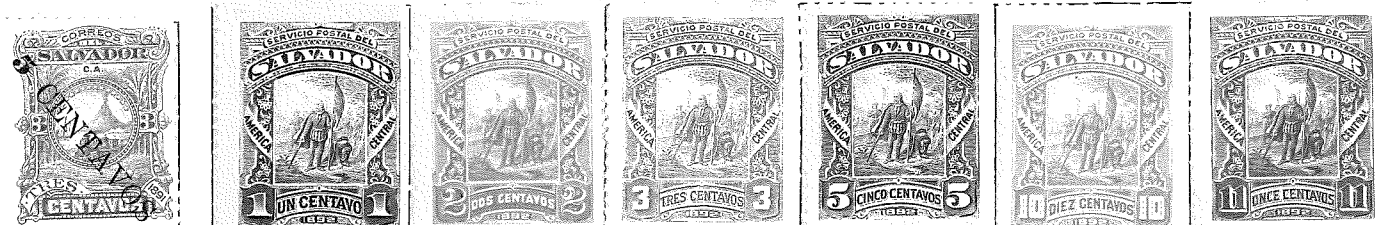


Vermilion

Surcharged

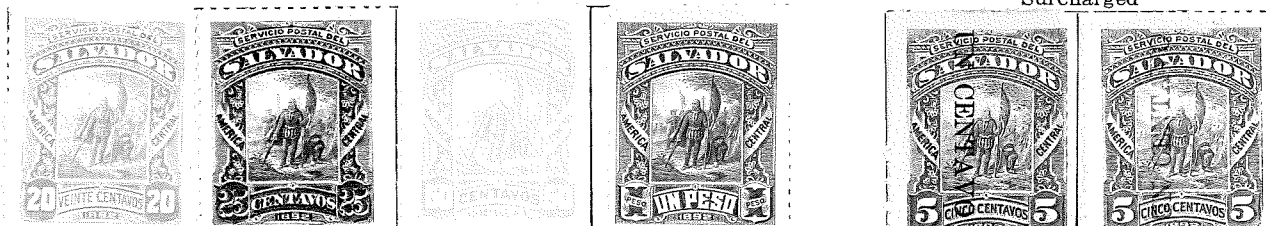


1892. Perf.



Green

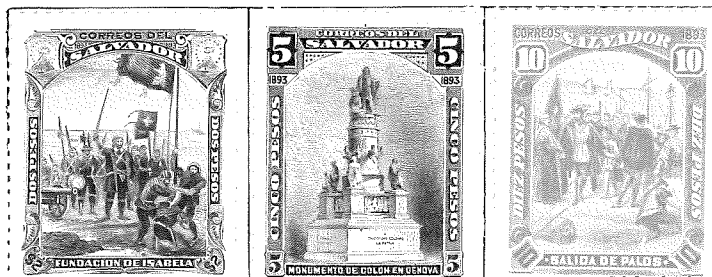
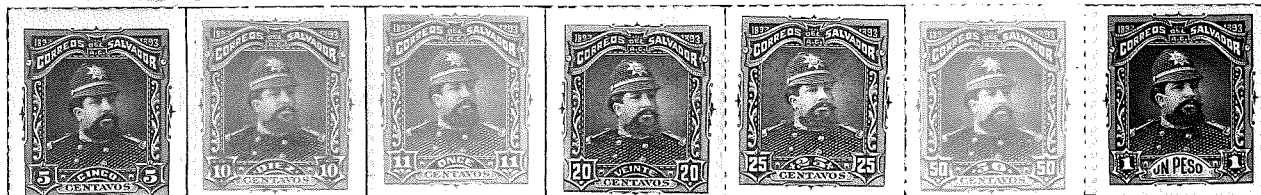
Surcharged



1893. Perf.



Violet



Green

Violet

Vermilion

Surcharged

1894. Perf.



Cuestnut

Chocolate

SALVADOR—continued

1894—continued



Surcharged

Blue

Carmine

Brown

Vermilion

1895. Perf. Arms overprinted in various colours



Sepia

Green

Brown

Blue

Orange

Claret

Scarlet

1895 (second issue). Perf.



Yellow



Purple



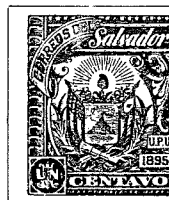
Indigo



Carmine



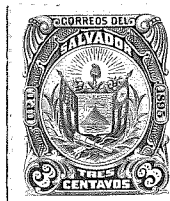
Olive-black



Sepia



Green



Brown



Blue



Orange



Rose



Vermilion

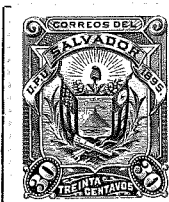


Claret



Violet

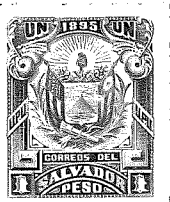
Surcharged in red



Blue



Carmine



Black



Olive-black



Olive-black

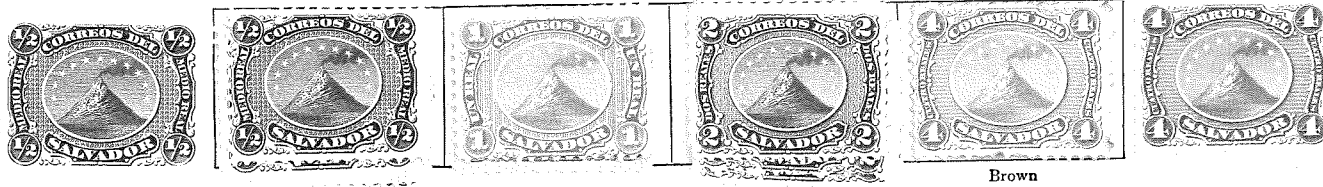


Olive-black

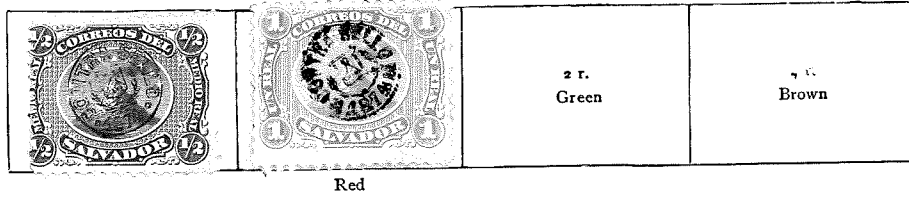
"3 c."
on
30 c., blue

SALVADOR

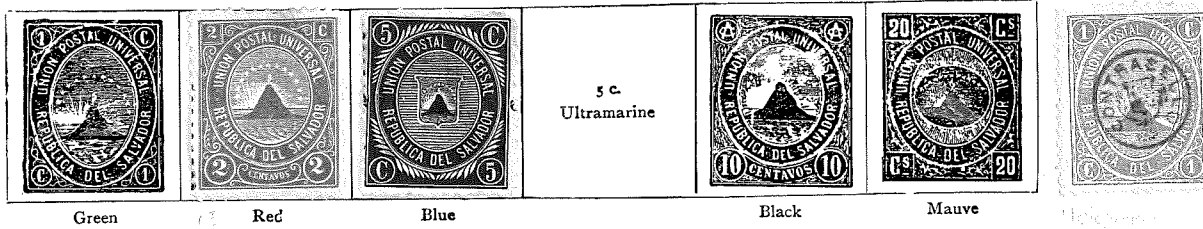
1867. Perf.



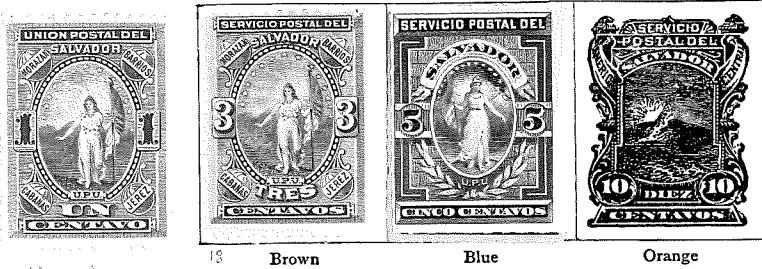
1874. Overprinted "CONTRA SELLO 1874" within a circle (two types)



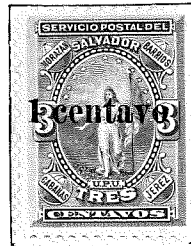
1879. Perf.



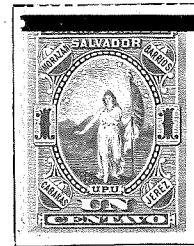
1887. Perf. or rouletted



1889. Provisionals surcharged

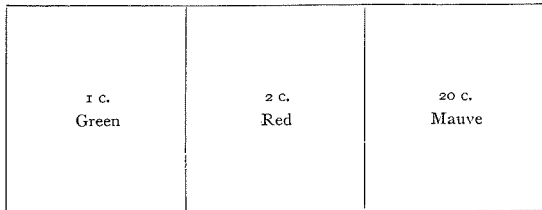


1889. Perf.



Nov., 1889. Various issues handstamped 1889.

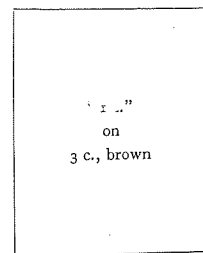
Stamps of 1879



Stamps of 1887



Provisional of 1889



1890. Perf.

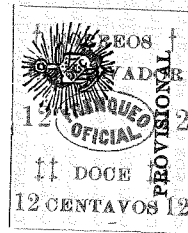
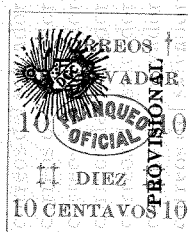




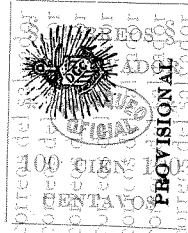
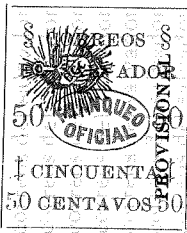
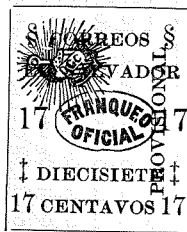
5279/63



5302/2



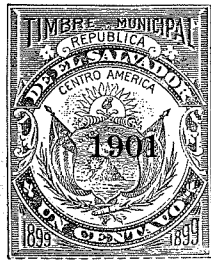
6079/11



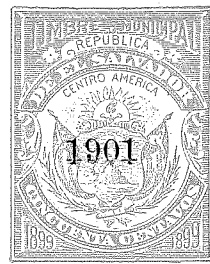
SALVADOR - FISCALS



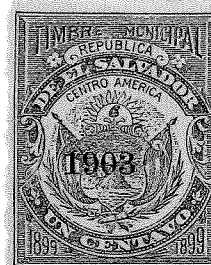
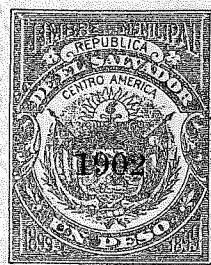
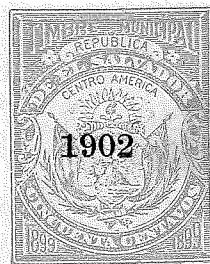
1899



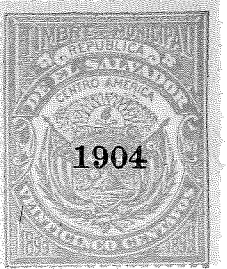
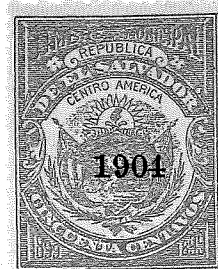
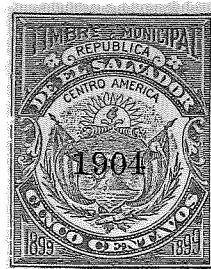
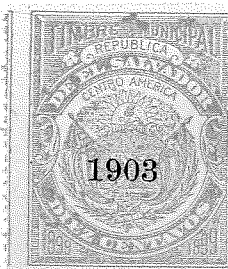
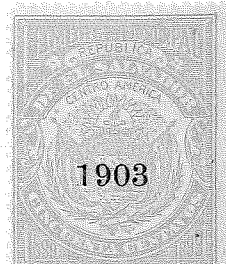
1901



1902



1903



1904



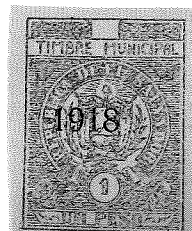
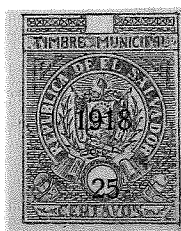
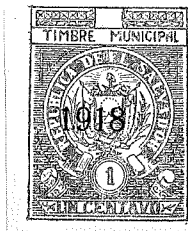
1917



1917



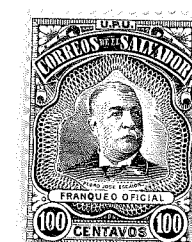
?



1918.



1912
(1906)



1938 8172



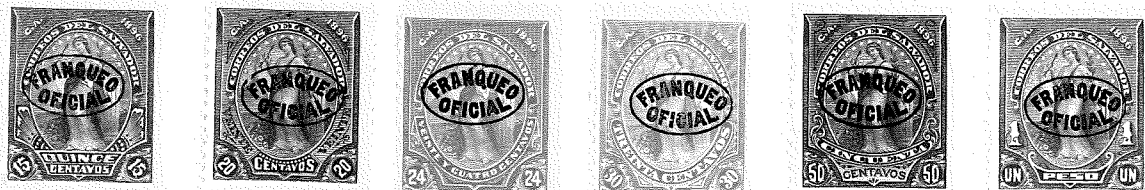
81

8171

OFFICIALS



0170/81 - 1896



0288/99 - 1898



0467/94
1911

