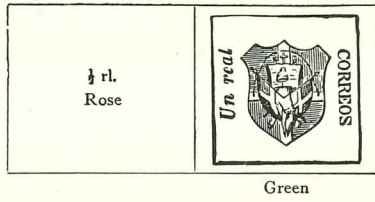
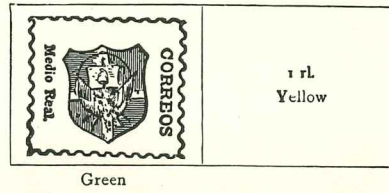


DOMINICAN REPUBLIC

1862. Black impression



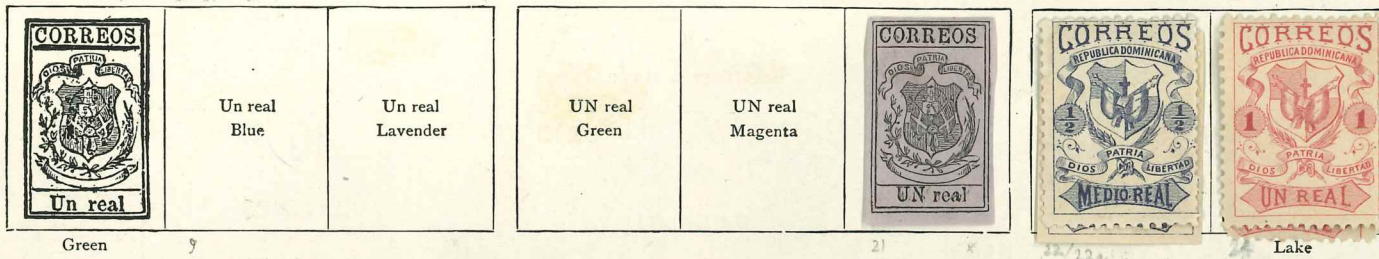
1865. Black impression



1866. Black impression



With "UN" in capitals



1879. Perf.

As last. Coloured paper



1880. Rouletted

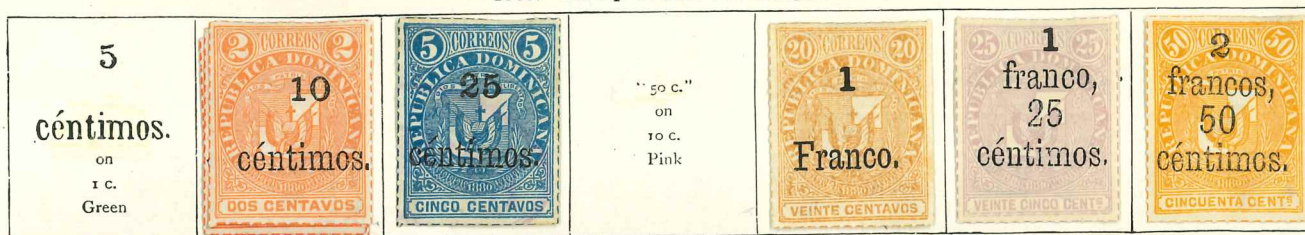


1881. As last, but paper covered with rose-coloured network



DOMINICAN REPUBLIC—continued

1883. Stamp of 1880 surcharged



63/44

43/45b/67

46/63

47b/69

Stamps of 1881 similarly surcharged



70

54/54c/71

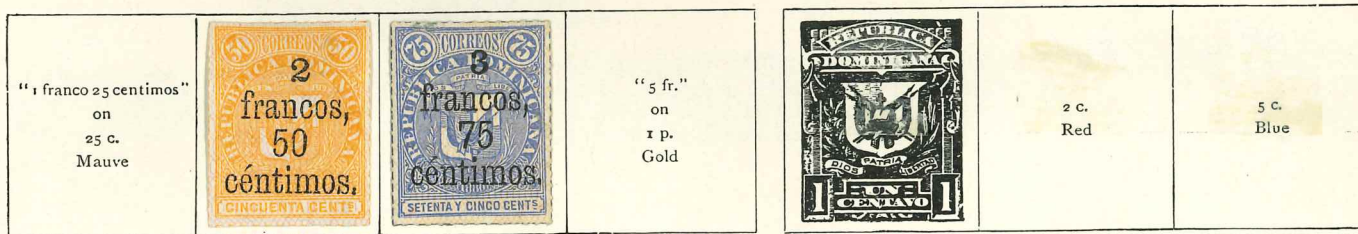
52b/55/73

56

57/75

60

1885. Perf.



64

77

Green



Orange

Violet

Carmine

1895. Perf.



85/35a

86/36a

Red

Orange

1899. Perf.



87

Claret



Rose

Blue

Orange

Brown

Green

DOMINICAN REPUBLIC—continued

1899—continued



Black on azure



Imperf.

1900

Perf.



Black



98

1900. Imperf.



98a

Black

Perf.



99

1900. Perf.



100g



Olive



1901. Perf. Centres in lilac



Carmine



2 c.
Green



10 c.
Orange



1902. Perf. Centres in black



Green



Red



Orange



Mauve



Olive



Centres in lilac exist on all values except 10c

1904. Provisionals
Postage stamp of 1901 surcharged



Official stamps surcharged
Date only. No figures of value

With value and date



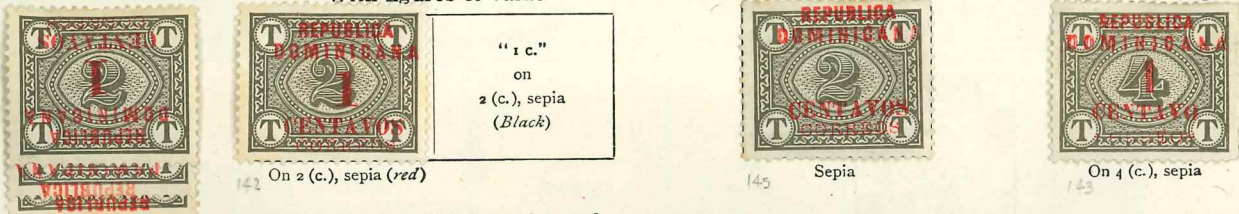
Black and red

Postage Due stamps surcharged

With figures of value

No figure of value

"Centavo" in singular



1905. Stamp of 1885 surcharged

1905. As 1901. Frames in black



1906. Provisionals. Postage Due stamps as 1904 surcharged

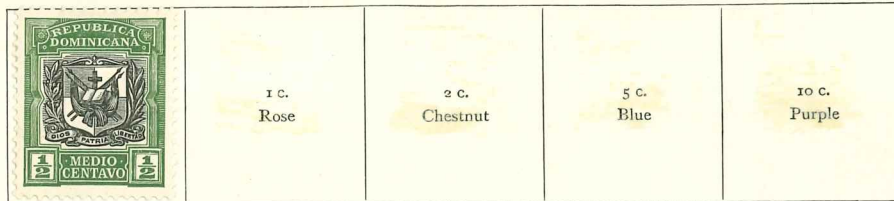


1906. As 1901. Centres in black



DOMINICAN REPUBLIC—continued

1907. As 1906, but wmk. "Crosses and Circles." Centres in black



168

1911. Wmk. "Crosses and Circles." Centres in black. Perf.



183

Green

1911. Official stamp
surcharged



182

1914. Background red, white, and blue; portrait black; frame coloured. Perf.



Orange

1914. Official stamps overprinted in red. Centres in black



20 2/8



203

1915. As 1911. Centres in black. Overprinted 1915 in red



209

Brown

211/212

DOMINICAN REPUBLIC—continued

Types as last, but overprinted with later dates, as shown in headings

1916

$\frac{1}{2}$ c. Violet	1 c. Green
----------------------------	---------------

1917

$\frac{1}{2}$ c. Violet	1 c. Green	2 c. Olive	5 c. Purple
----------------------------	---------------	---------------	----------------



218

220



225

227

231

1921

1 c. Green	2 c. Olive
---------------	---------------

233

1922. Not overprinted

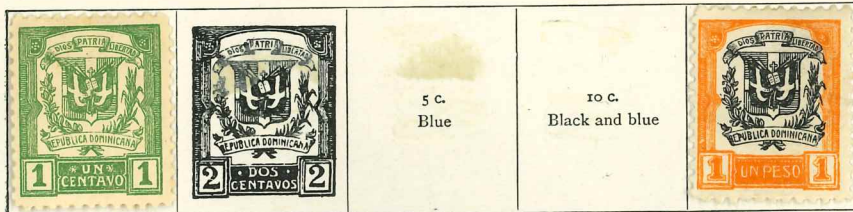
$\frac{1}{2}$ c. Violet

235

Printed in one colour

1 c. Green	2 c. Carmine	5 c. Blue
---------------	-----------------	--------------

1924-26. Perf.



240

Red

243

1927. Perf.



249

Blue

1928. Air stamp. Perf.



256

Ultramarine

1928. Perf.



258

Carmine

	10 c. Light blue		50 c. Deep green
---	---------------------	---	---------------------

DOMINICAN REPUBLIC—continued

1928—continued



1929. Perf.



10 c.
Light blue

267

Red

1930. Air stamps. As 1928



271

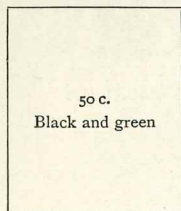
1930. Perf.



10 c.
Pale blue

275 Red-brown

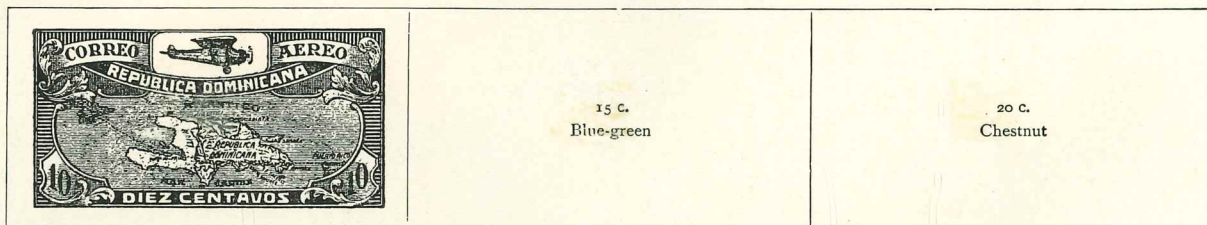
1930. As 1924-26



50 c.
Black and green

245

1930. Air stamps. Perf.



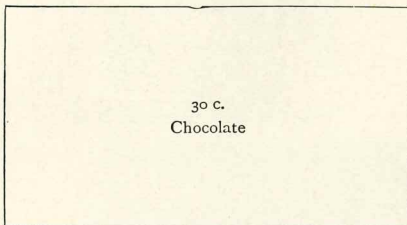
15 c.
Blue-green

20 c.
Chestnut

280

Light blue

1930. Perf.



30 c.
Chocolate



Green and carmine

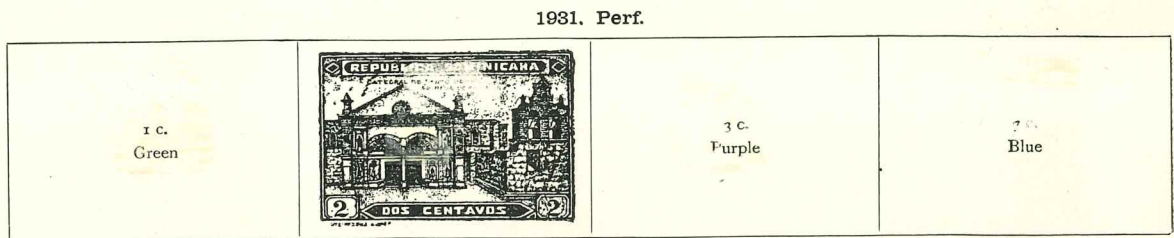
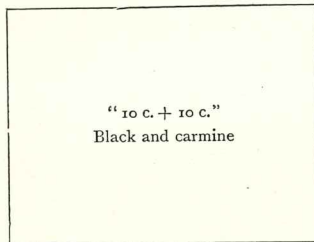
1931. As last surcharged in red or gold



Yellow and carmine



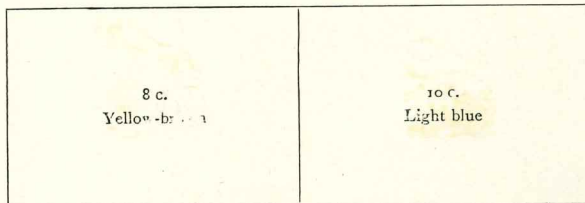
1931—continued



294

Red

1931-33. Air stamps. Perf.



200

Red



Type 1-2



1932. Perf.



303

Violet

1933. Red Cross stamps inscribed "CRUZ ROJA DOMINICANA." Cross in red
Surcharged or overprinted only



312

1933. Perf.



Deep green

Green

316

DOMINICAN REPUBLIC—continued

1933—continued



Rose-scarlet



Brown

1933. Perf.
Portraits of President Trujillo



Green



Black and green

3 c.
Black and violet

7 c.
Black and blue

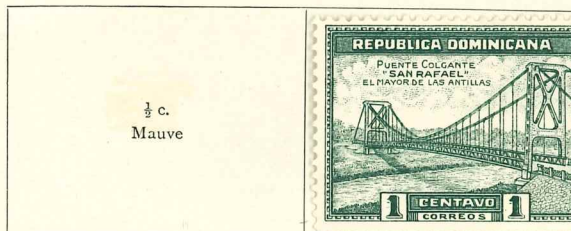
Air stamp. As 1931,
overprinted in green



1934. Perf.



Blue



1/2 c.
Mauve

Green



3354



Green



Blue

1935. Perf.



Green



3472p

Air Stamp



Pale blue and blue



Orange



Brown and yellow

DOMINICAN REPUBLIC—continued

1935—continued



Chocolate and orange

1936. Air stamp



358 Blue and dark blue

1936. Perf.



356/7



Green



359

Brown



ous Portraits



Greenish blue



Red

DOMINICAN REPUBLIC—continued

1936—continued



370

Olive-green



1936 - 370



1879 - Reminders ?

x



1891 "Parisot Issue" - Speculative. x



1902 official 0121/4



5173 (1909)



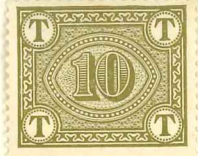
1901 0117



0180



0191/4



1913

1187

1937



377/9



380/2



384

10c





#09/14 Pres Nord Alexis
 Reprints in very bright colours on very
 white paper - note under SG. 114.

45



HAITI



SG. 325/30 AIR-1935

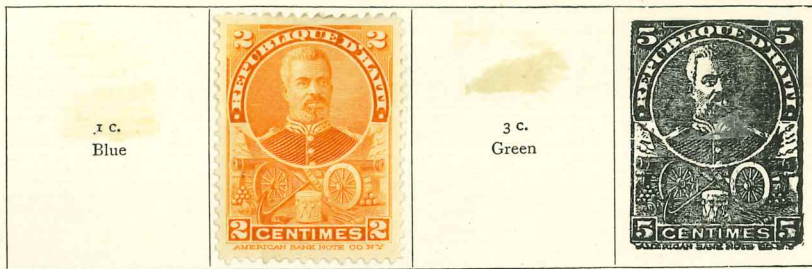
HAYTI—continued

1898. Perf.

1898. Wmk. "R.H." Perf.



43/50 Lake

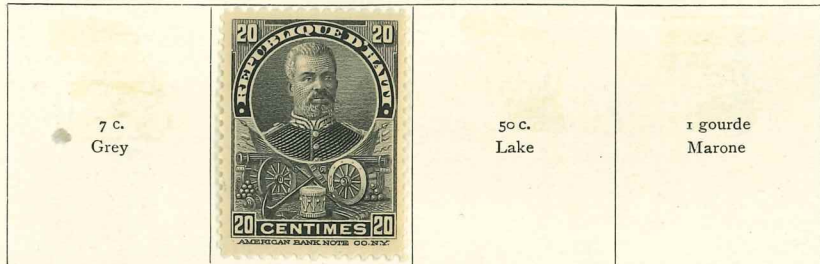


1 c.
Blue

3 c.
Green

Brown

1398-1900. Perf.



7 c.
Grey

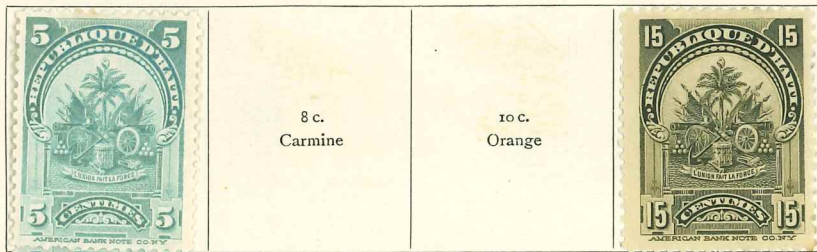
50 c.
Lake

1 gourde
Marone



Red

1902. Stamps of 1898 overprinted

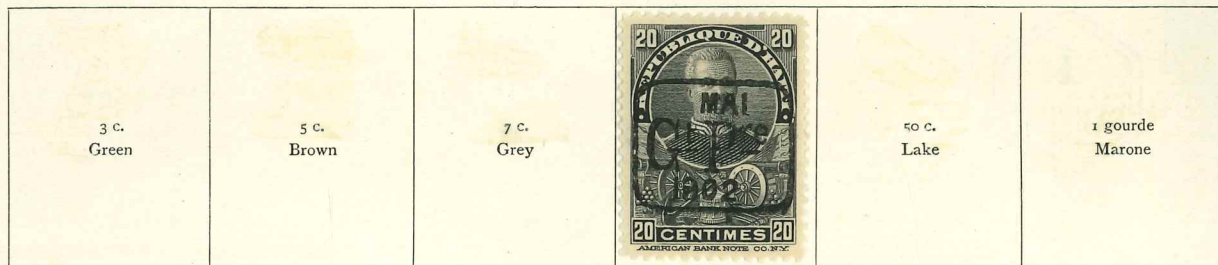


8 c.
Carmine

10 c.
Orange



on
1 c., blue



3 c.
Green

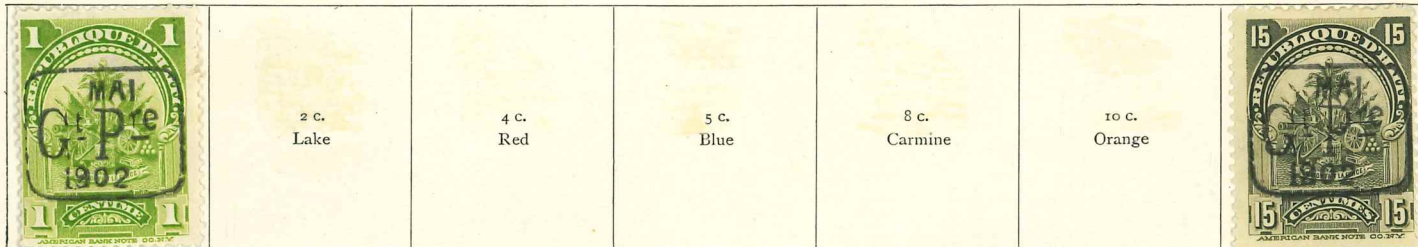
5 c.
Brown

7 c.
Grey

50 c.
Lake

1 gourde
Marone

Stamps of 1898-1900 similarly overprinted



2 c.
Lake

4 c.
Red

5 c.
Blue

8 c.
Carmine

10 c.
Orange

1904. Jubilee issue. Perf.



Green

Black and rose

Black and magenta

Black and grey

HAYTI—continued

As last, overprinted

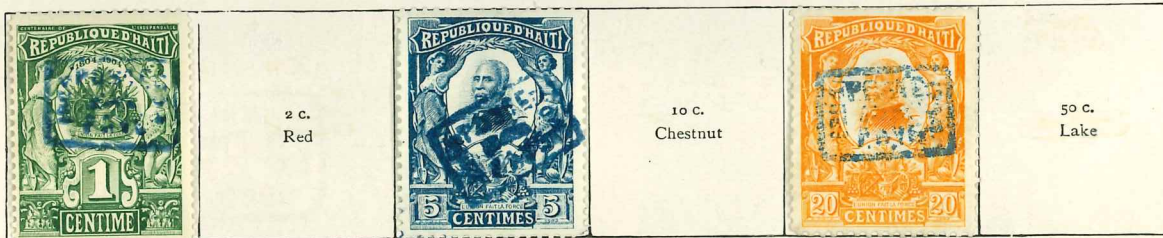


1904. Regular issue. Perf.



Green

As last, overprinted as Jubilee issue



1906. Stamps of 1904, Regular issue, surcharged

In red

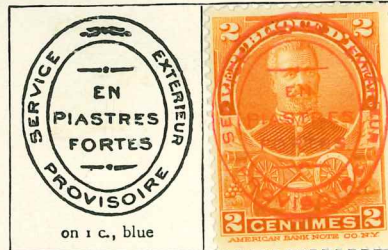
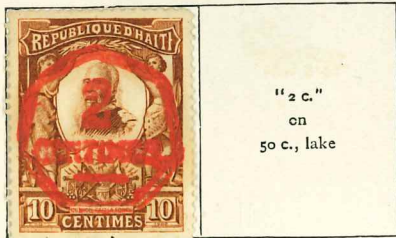
In black



1906. Provisionals for External postage
Stamps of 1898 overprinted in red

In red

In black



on 1 c., blue

3 c.
Green

5 c.
Brown



HAYTI—continued

1906. Provisionals for External postage—continued
Stamps of 1896-1900 similarly overprinted



118

124
1906. Regular issue. Perf.

Inland postage

External postage



132

Blue



Orange



Slate



Green



137

Green



148



Vermilion

5 c.
Deep blue

20 c.
Greenish blue



Sepia



Lake



Grey

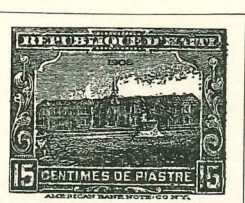


146

Rose



Orange



148

Olive



149

Claret

Inland postage

1910. Perf.
External postage

As 1906. Colour changed
Inland postage



160

Black and lake



161

5 c. de p.
Black and blue

162



163

2 c. de g.
Yellow

164

1912. Perf.
For Inland postage

For Foreign postage

External postage

3 c. de p.
Orange

160



162/6

Lake



Orange



Blue

HAYTI—continued

1913. As 1906. Colours changed

4 c. de p. Olive	7 c. de p. Red		20 c. de p. Brown-red	25 c. de p. Yellow	50 c. de p. Yellow
---------------------	-------------------	---	--------------------------	-----------------------	-----------------------

169

1914. Previous issues overprinted or surcharged



1915. Centres in black. Perf.



212. Owing to theft, never put on sale.




Olive 228 Green 226 Orange

Surcharged

Stamps of 1904

As last. Overprinted in addition

 on 5 c., blue	 "1" on 20 c., orange	 "1" on 20 c., orange	 "1" on 50 c., lake	 "1" on 7 c., grey
--	---	---	---	--



242 244

230

HAYTI—continued

1917. Stamps of 1906-13 and provisionals of 1914 surcharged



1^{ct.}
GOURDE

237/3
No. 1007 8/pt 7



245



241



240



274



253



254



251



257

1
1^{ct.} GOURDE



222



243



258



236

Postage due stamps surcharged
Overprinted "GL. O.Z./7 FEV. 1914" Without overprint

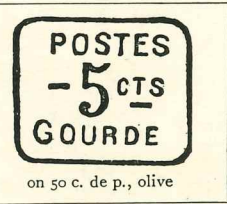


283

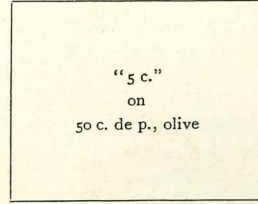
on 10 c. de p., orange



(5 c. on 10 c. de p.) lilac



on 50 c. de p., olive



"5 c."
on
50 c. de p., olive



294/8

Orange



1920. Perf.

Red



1924. Perf.

299 303 Green

Carmine

301 Blue

Olive

HAYTI—continued

1928. Perf.



Green

1929. Perf.



Carmine

1929-30. Air stamps. Perf.



304



Violet

75 c.
Claret



1931. Perf.



Green

10 c.
Carmine
(Portrait of S. Vincent)

1933. Perf.



Orange



314
Green

10 c.
Red
(National fort)



Blue



Brown

1933. Air stamp
Stamp of 1924. Surcharged



Blue-green



Olive



311a

1933-35. Air stamps. Perf.



Orange

1935. Perf.



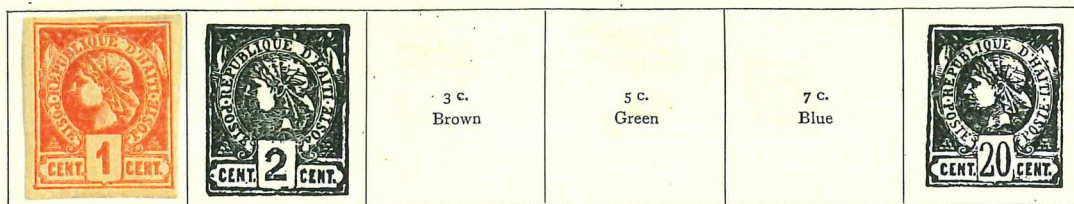
331/3
Brown and red

Air stamp. As last but inscribed "AVION"



HAYTI

1881. Imperf.

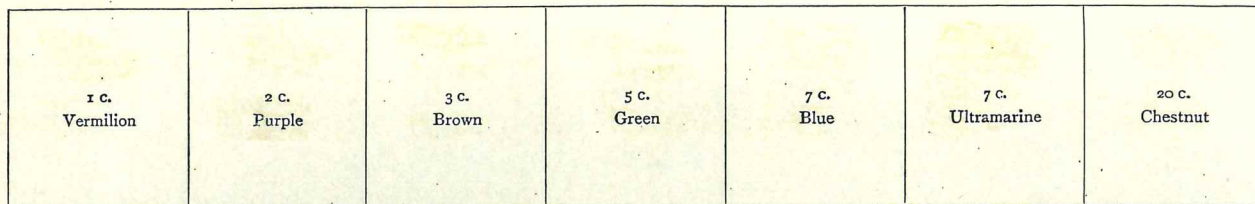


15

Purple

Chestnut

1882. Perf.



1887. Perf.



Lake

1890. Surcharged



Blue

1891. Perf.



19/12

Lilac

1892. Surcharged



34

Grey

1893. Perf.



20/4

Grey-lilac

1898. As last. Colours changed

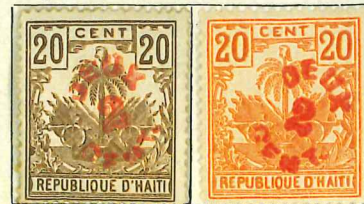


4/6

24

25

Stamps of 1893 and 1898 surcharged



Brown

4/6