


GERMANY—continued

1873. As Jan., 1872, but large shield  in centre



1874. As last, with figure in centre



9 kr.
Brown

Brown

1875. "PFENNIGE" with final "E". Perf.

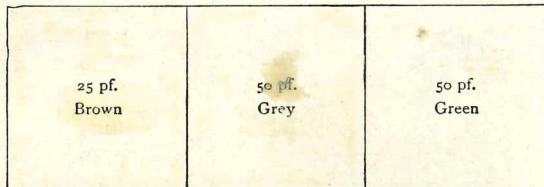


Green

Red

20 pf.
Blue

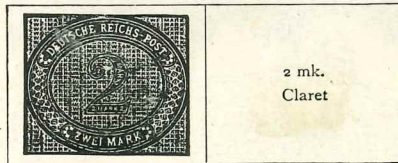
1875-82. Perf.



25 pf.
Brown

50 pf.
Grey

50 pf.
Green



2 mk.
Claret

Purple

1880. As 1875, but "PFENNIG" without final "E"



50 pf.
Grey

1889. Perf.



Brown

Red

1900. Inscribed "REICHSPOST." Perf.



Brown

GERMANY—continued

1900—continued

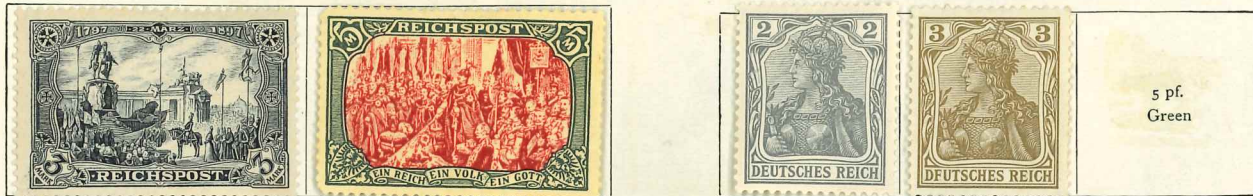


59/61 B

Carmine

Blue

1902. Inscribed "DEUTSCHES REICH." Perf.



Violet

Red and black

Brown

5 pf.
Green



70

72

74



77 B

Carmine

78

Blue (Gothic inscription)

78A

Blue (Roman inscription)

80 3/4

Violet

1905. As 1902, but wmk. "Lozenges"



81 A



84 1/2

85



86



93 A

94 B

95 B

96 A



GERMANY—continued

1918. Wmk. "Lozenges." Perf.



137 1/2 138 139 140 141 142 143



(5 pf.) Brown 140 141 142 143 144 145



146 147 148 149 150 151



152 153 Carmine 154 (2 m. 50 pf.) claret

1919. As 1918. Surcharged



137/9 105 1/2

1919. Perf.



107/10 Carmine Blue and brown Red and green 110 111/2 Orange Green

GERMANY—continued

1920. As 1918. Wmk. "Mesh"

Stamps of 1918 surcharged in black or green



136/7

172

173

Stamps of Bavaria, 1920, overprinted **Deutsches Reich** (on 2½ m. in red)



Overprinted **Deutsches Reich**



1921. Wmk. "Lozenges." Perf.



153/7
Claret



160/5

Carmine

Ultramarine

Orange

171

Indigo

GERMANY—continued

425

1921—continued



163 Orange

170

226

231

1922. Wmk. "Lozenges"



232/4

233

166/7

167

Deep green and green

1922. As 1921. Wmk. "Mesh." "Figure" type



176/182

178

179

182

184

Smiths, Miners, and Reapers types. Same wmk.



183

230/1

Ploughman

"Figure" type



255



195



193

194



235/46

238

GERMANY—continued

1922 ("Mesh" wmk.)—continued



"Posthorn" type. Same wmk.



As last. Single colours



1922. Perf.

Wmk. "Mesh"

Wmk. "Lozenges"



Violet

1922. Air stamps. Wmk. "Mesh." Perf.



Brown

Green

1922—continued



249



Charity stamps. Perf.



257/3

Charity stamps. Wmk. "Mesh." Perf.



247/8

Red and lilac

1923. Wmk. "Mesh." Perf.



249 Orange

Same wmk.



260

261 Purple



247/8

Blue

Olive



312/12 Greenish blue



0274/8.

GERMANY—continued

1923. Provisionals. Previous types surcharged in various colours and types with new values in "Tausend" (T.) (=thousands), "Millionen" (M.) (=millions), or "Milliarden" (Md.) (=thousands of millions). Wmk. "Mesh" Perf.



Rouletted



1923. Values in "Tausend" (T.), "Millionen" (M.), or "Milliarden" (Md.). Wmk. "Mesh." Perf.



Brown

Scarlet



Chocolate

1923 (perf.)—continued



331/2

Rouletted



333/4

1923. As last, surcharged. Perf.



343/8

Rouletted



349/5

1923. As before, but value in gold pfennigs. Same wmk. Perf.



352/7

Carmine

1924. Air Post. As 1922. Value in gold pfennigs. Same wmk. Perf.



355/4

1924. Perf.



369/75

Green

373 Claret

374

GERMANY—continued

1924. Perf.



Green



Green



Blue

1925. Perf.



Red



Green



Red



Green



Charity stamps



Yellow, black and green

1926. Perf.



Green



Rose and black



Brown



Green



Carmine



Vermillion



Blue-green



Olive



Violet



Brown



Chocolate



1926. Charity stamps. As 1925 but dated "1926"



413/6

416/7

1927. Charity stamps. Perf.



Green

Portrait types of 1926 overprinted



5 pf., green

418



424 Bistre

1928. Perf.

429



440

Green

437

441

Air stamps. Perf.



447/8

Sepia

1928. Charity stamps. Perf.



449/50 Yellow-green, red and yellow

1929. Charity stamps. Perf.



451/5 Yellow-green, red and yellow

1930. As 1928. Colours changed.



436

434

Air stamps as 1928 inscribed "1. SÜDAMERIKA FAHRT"



456/7

1930

Perf.



458

Blue

As 1928. Overprinted



459/60

GERMANY—continued

1930. Charity stamps. Perf.



465/3 Green Carmine Blue Brown

1931. As 1928



427 442

Air stamp. As 1928



443

As last, overprinted "POLAR-FAHRT 1931"



469/71

1931. Charity stamps. Perf.



472/3 Green Carmine Blue Brown

1932. As last. Surcharged



476/7

1932. Perf. *Neck mark*



Green

1932. Charity stamps. Perf.



483/9 Light blue Green Red Blue Purple

1933. As 1932 (Hindenburg). Perf. *Swastikas Wmk **



493 B

|| 2,00 ||

1933—continued



509 B

1933. Air stamps of 1928-31. Overprinted



510/12

1933. Perf.



490/2 Green

513/21 Brown

Blue

Emerald



Deep green

Orange

Carmine

519 Light blue

Ultramarine

1934. Air stamps. Perf.



Magenta

526/36

Red



Black and green

Black and blue

1934. Perf.



541/2 4/M Green

542/2 4/M Green

560/1 Green

GERMANY—continued

1934. Hindenburg type as 1932. *Black margins. Perf.*



343/50

1934. *Perf.*



Chocolate and brown

337/40

Various designs



Brown

501/9



1935. *Perf.*

Portraits of Composers



Brown

562/5



Green

570/2



Green

566/7



Green



Green

1935. Perf.



Green

Lake

Blue

Magenta



Green

Various designs showing women in provincial costumes



Brown

Deep green

Marone

1936. Perf.



Brown



Blue

Olympic Games issues

1935. Winter Games. Various designs



Green

1936. Summer Games



Brown

Slate-blue

Green



Vermilion

Red

Claret

Ultramarine

Violet

GERMANY—continued

1936. Perf.
Air stamps



Green

Green

Green



Green

Brown



425/31



082/3
1903



090/5
1905



0124/36
1920



1925



S.G. 704/17

1. Oct 1939

Stamps of Danzig overprinted.



Mounted.

1920
0117/23



0123 1.M.

1933-41 New Values & Colours - Mesh Work.



494A/509A



143b

144b

146a



157a

154b



141b

98b

98b



260

MS 613a 1936 Unmounted.



MS 614/38 (1938) Unmounted.

650

MÜNCHEN-
RIEM



1936

XI. OLYMPISCHE SPIELE



BERLIN 1936

XI. OLYMPISCHE SPIELE



BERLIN 1936



Local:



632/4 (1937) vfm

M/S 1936

952 1934

113