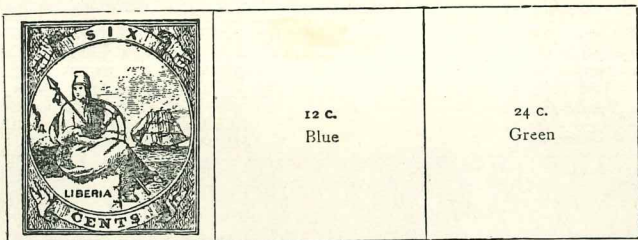
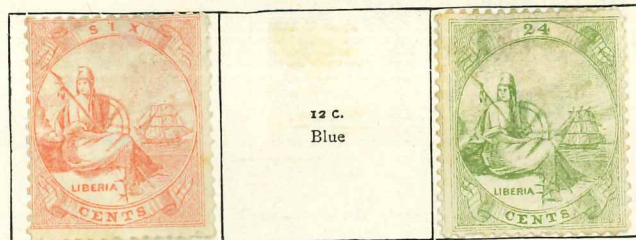


1860. Imperf.



Red

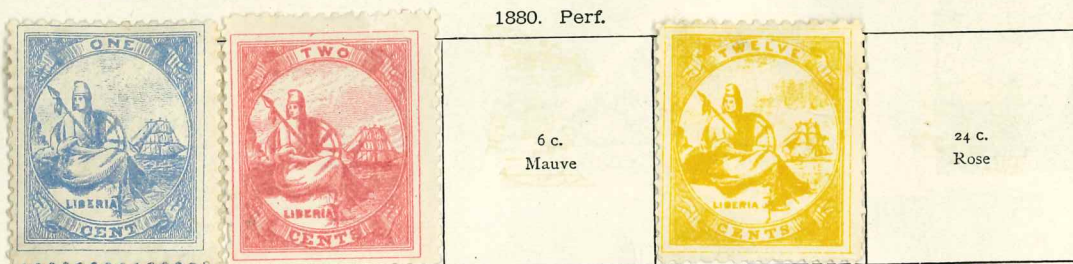
1864. Perf.



12 c. Blue

24 c. Green

1880. Perf.



6 c. Mauve

24 c. Rose

1881. Perf.



Black

1882. Perf.



Blue

Rose

1886. Perf.



Red

6 c. Drab

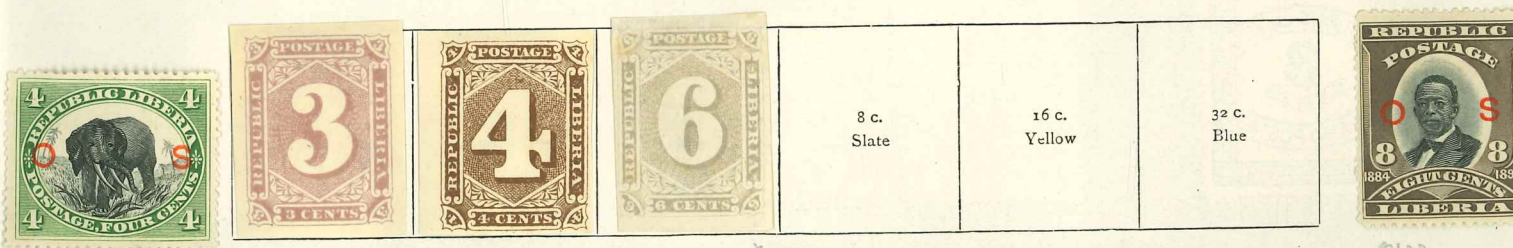
1891. As 1882. Imperf.



Lilac

Blue

1892. As 1886. Imperf.



8 c. Slate

16 c. Yellow

32 c. Blue

1892. Wmk. "Rosette." Perf.



Red

Black and green

Green

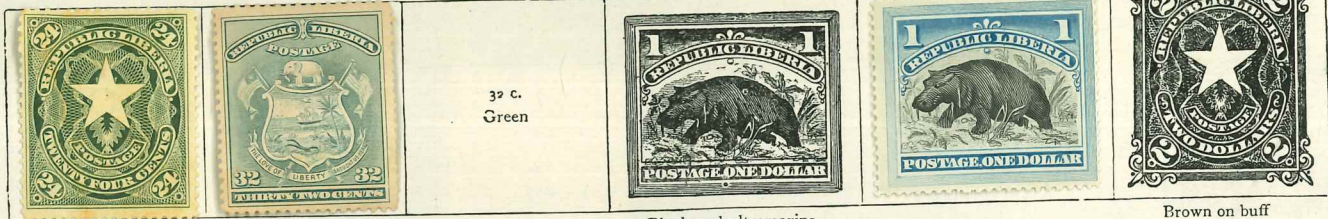
Black and brown

Rose

Lilac

LIBERIA—continued

1892—continued



Green on buff

Blue

Black and ultramarine

Brown on buff

1893. As last, surcharged

1894

Rouletted



Black and carmine

Green

Black and red

1897. Wmk. "Rosette." Perf.



0157

Mauve

Black and ochre

Black and lake

Blue and yellow



0158

Slate

Red

Green

Blue

Black and brown

1897. Perf.

1900. As 1897, colours changed



156

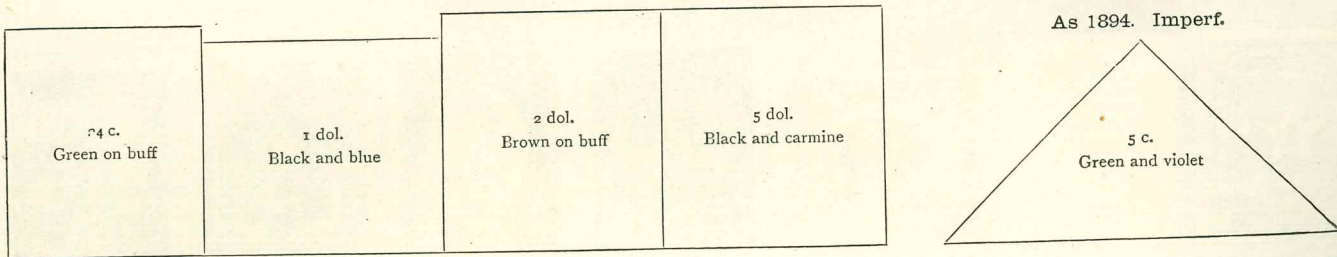
Red and green

145

1892

226  
201. Stamps of various dates overprinted "O.S." and overprinted "ORDINARY"

Set cat. in excess of \$1000 (1997)



As 1894. Imperf.

LIBERIA—continued

1901—continued

1897

10 c. Blue and yellow	15 c. Slate	20 c. Red	25 c. Green	30 c. Blue	50 c. Black and brown
--------------------------	----------------	--------------	----------------	---------------	--------------------------

1900

1 c. Green	2 c. Black and red	5 c. Black and blue
---------------	-----------------------	------------------------

1902. Stamp of 1892 surcharged



1903. Perf.



Stamps of 1892 surcharged in blue



Stamp of 1893



Stamp of 1897



Stamp of 1892 already overprinted "O.S."



1906. Centre in first colour. Perf.



224/36 Black and green      Black and red      Black and blue      Black and marone      Green and violet



Black and orange      Grey and blue      Violet      Black and green      Black and chocolate



Black and pink      Black and green      Grey and marone

097/8

0119/20

LIBERIA—continued

1909. Perf. (the 10 c. rouletted)



Black and green

Black and red

Black and blue

162 b

Black and purple

Black and indigo

250/60



Myrtle and rose

black and sepia

Black and brown

Black and myrtle

Black and chocolate

1909. Surcharged in black



261

Rouletted

1910. Surcharged in blue

Perf.



274



274

Stamp of 1897 surcharged



278

1914-16. As 1909 and 1906, variously surcharged in black or red

"1 c." on 2 c., black and red	"one cent" on 2 c., black and red	"2 c." on 5 c., black and blue	"two cents" on 5 c., black and blue
-------------------------------------	---	--------------------------------------	---



292

**2**  
on  
25 c., black and sepia

1914

**2**  
CENTS  
on  
25 c., grey and blue



295



296

**5**  
on  
30 c., brown

<b>5</b> on 30 c., violet	"5" on 30 c., brown	"10" on 50 c., black and green
---------------------------------	---------------------------	--------------------------------------



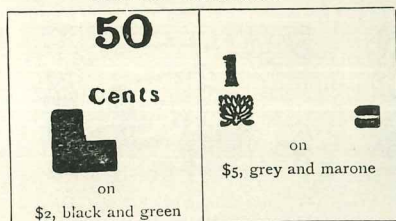
293

**25** cts.  
XXXXXX  
on  
25 c., black and pink

304

LIBERIA—continued

1914-16—continued



1916. Perf.



Vermilion

Lilac

L F F  
1c

Surcharged in red



290



Green



Black and green



Black and green

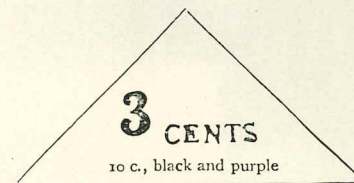
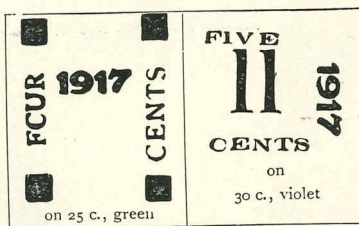


Black and red



5 c. on 12 c., yellow

341



3 CENTS  
10 c., black and purple

1918. Perf.



Black and green

Black and blue

Black and green

Black and claret

Black and olive

Brown



Black and carmine



Green



Green



Black and mauve

LIBERIA—continued

1918—continued

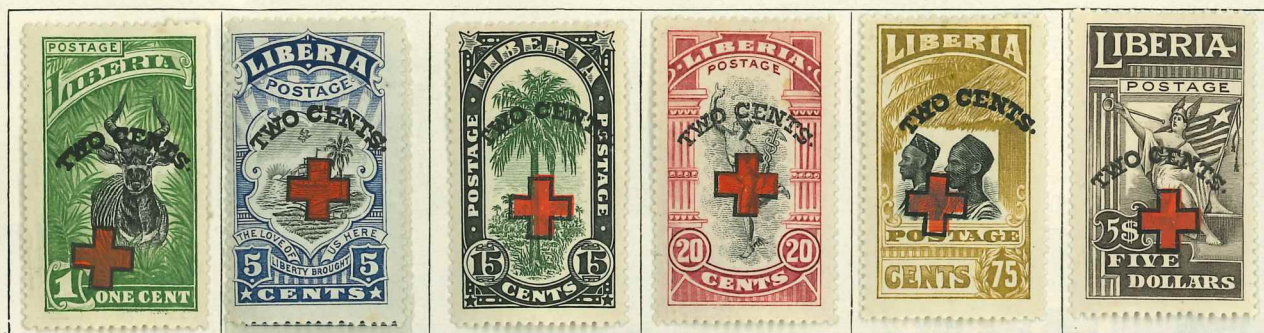


Black and blue

Blue and bistre

Black and mauve

As last. Surcharged  in black and red



375/47



1920. As 1918. Surcharged

<p>1920 THREE CENTS on 1 c., black and green</p>	<p>1920 FOUR CENTS on 2 c., black and carmine</p>
--	---

393

394

LIBERIA—continued

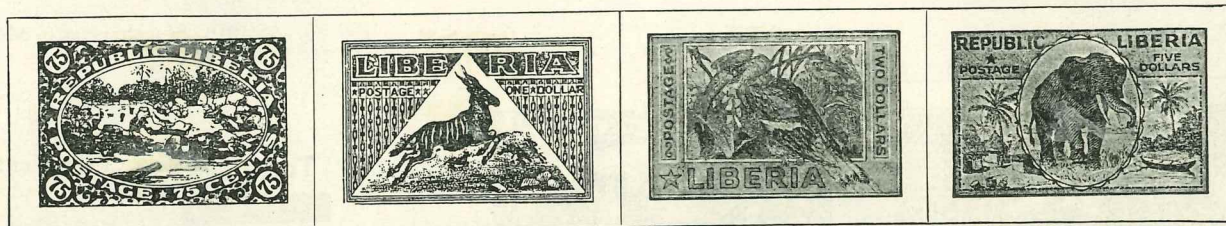
1921. Wmk. Crosses and Circles. Perf. With or without overprint 1921



414/27 Green Black and blue Blue and red Green and purple



Green and rose Black and yellow Purple and green Blue and yellow



Sepia and red Black and red Violet and yellow Pink and purple

1923. Same wmk. Perf.



Brown and claret

1923. Same wmk. Perf.



471 Green Black and mauve Black and blue Brown and slate

LIBERIA—continued

1923—continued



Orange and purple



Chocolate and dull rose



Blue and bistre



Mauve and green



Brown and vermilion.



Mauve and brown

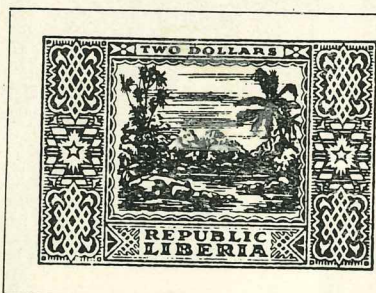


Blue and grey



Purple and red

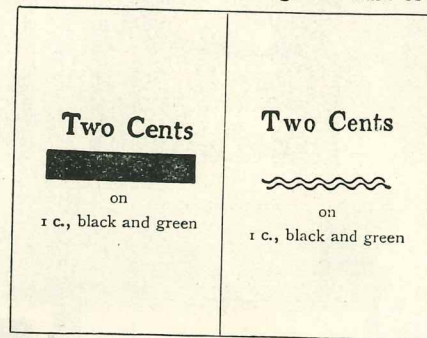
1926-27. As 1918. Surcharged in black or red



Blue and orange



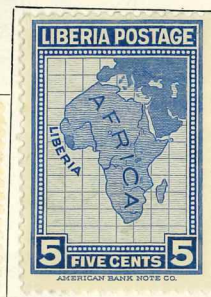
Brown and green



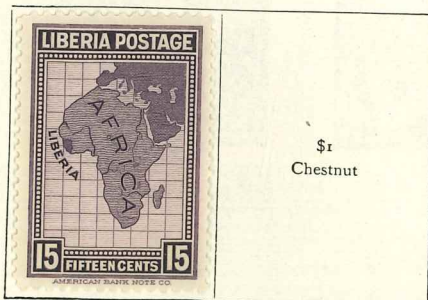
1928. Perf.



Green



Grey



Purple

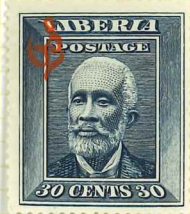
\$1  
Chestnut







0262/72



0337/3

4522

0400

0521



1019 R. 388 92 / Perf or Rowette



Imperf between rowette



0348 1915

0276 1910

83 Fingerprint - listed SG x.

0278



1906 - official  
56 0237/49



1918 - official  
0362/74





