

1885. Perf.

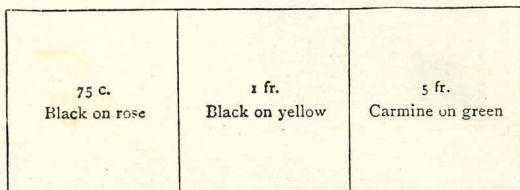


Olive

2q

5c

1891. Perf.



Grey-green

12b



14

14a

15c

17a



18a

19a

20a

21a

1901. As 1891. Colours changed



23/23b

48/50

50

1914. Stamp of 1901 surcharged in red



1919. Perf.



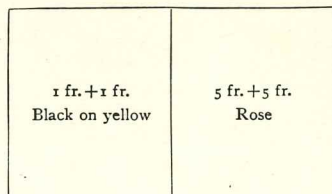
31

Green

35

50 c. + 50 c.  
Brown on orange

1920. As 1891. Colours changed



36

37



27

5 fr.  
Mauve

MONACO—continued

1922. As 1891-1920. Surcharged



1923-24. Perf.



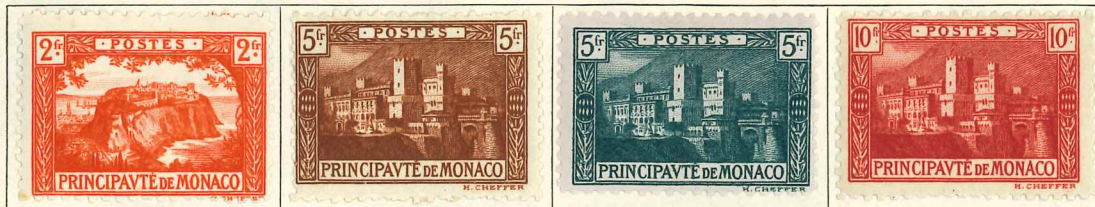
Olive

Brown



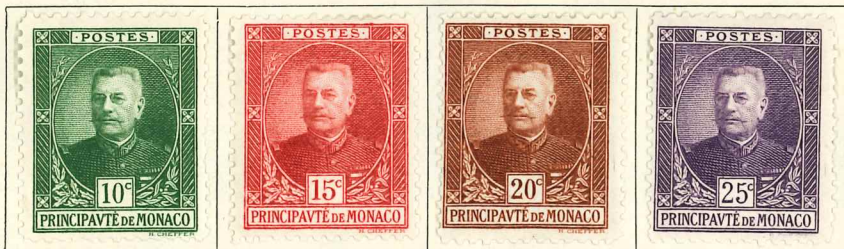
Blue

Grey



Brown

Blue



Red-brown

1924. As 1891-1920. Surcharged



1924-27. Perf.



Blue



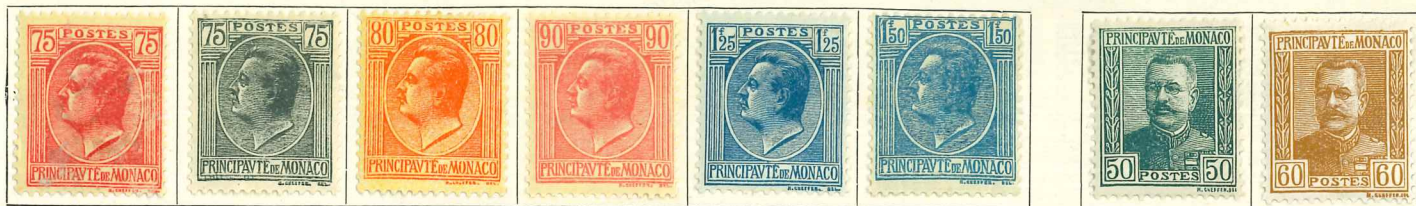
Pink



MONACO—continued

747

1924-27—continued



Blue-green



Black on yellow

Sepia and violet

1926. As last. Surcharged



1928. Perf.



Carmine

1928-29. Provisionals as 1926



1929-33. As 1924-27



# MONACO—continued

1933-35. Perf.



Lake

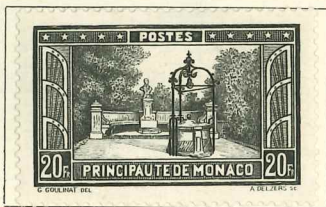


Blue-green

Blue



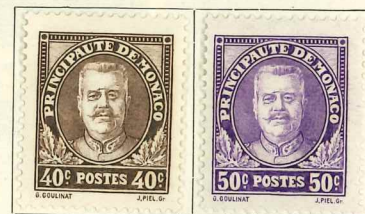
Indigo



142



Green

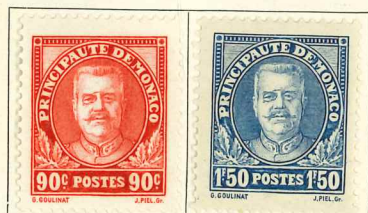


Chocolate

1933. Air stamp.  
As 1924-27. Surcharged



136



D 29/30 1906



D 113



D 114



D 116



D 115

E 4774



116/20



D 106/10



D 39/4

D 112

D 36/7