



23

1918 - A.O. = Afrique Orientale - without gum as issued.



24



25

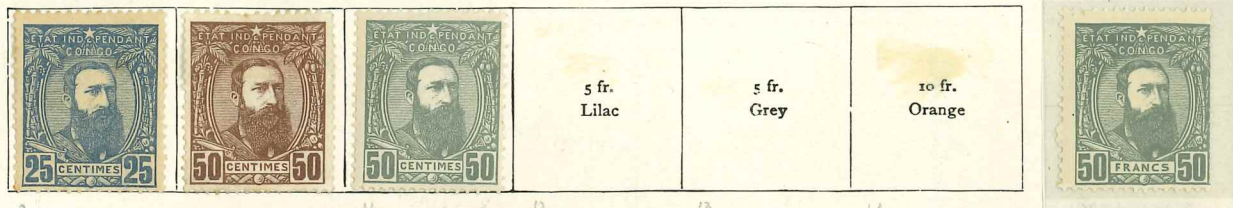
BELGIAN CONGO FORMERLY CONGO FREE STATE

I. CONGO FREE STATE

1885. Perf.



1887. Perf.



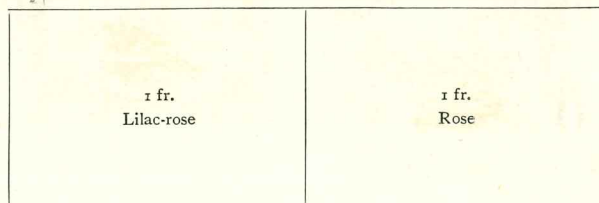
1894-96. Centre in black. Perf.



1898. Centre in black. Perf.



1900. Colours changed. Centre in black



BELGIAN CONGO—continued

II. BELGIAN CONGO *Sovereignty assumed*

1909. Stamps of 1894-96 and 1900 overprinted CONGO BELGE in black



48

54



36 A/46



37 A/47



49



50



41 A w/51



52



53

to fr.
Black and green

56/55b

Jan., 1910. Centre in black. Perf.



38 A



56/5

Green



57

Carmine



Ochre



59

Olive-green

1910. Centres in black. Perf.



44 A



60

Green



63

Blue



64

Green



61

Olive-bistre



62

Ochre



67

Rose



66

Claret



68

Vermilion



69

Green

BELGIAN CONGO—continued

117

1915. Same and new types. Colours changed. Centres in black. Perf.



70/77

Green

71/76

Carmine

72/5

Blue

72



74

75

1918. As last, but centres in blue. Surcharged in red



78



1920. Centres in black. Perf.



87/6

Orange

Lilac

Blue

Green

BELGIAN CONGO—continued

1921. Stamps of 1910 surcharged in black or red. Centres in black



91/100

93

Overprinted 1921



96

97

98

99

100

1922. Stamps of 1915 surcharged in black or red



101/5

102

103

103

1922. As last, new surcharge



106/107

110

112

113

114

1923. Perf.



Yellow

Blue



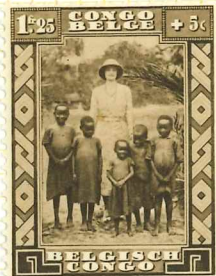
106



113



104 b



217/5



269 a/d (1944)

BELGIAN CONGO—continued

1923-27. Perf.



120

Olive

121

122

Rose

124

125



Chestnut

129

Red-orange



Brown

133

134

136



137

138

Sepia

139

Slate

140

Black

1925. Surcharged



Black and carmine

141

1926-27. Perf.



Carmine

1927. Surcharged



BELGIAN CONGO—continued

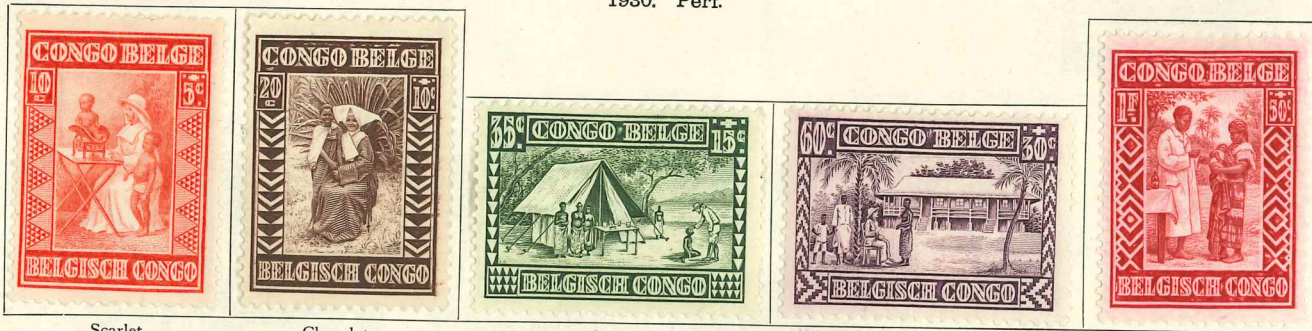
1928. Perf.



Green



1930. Perf.



Scarlet

Chocolate

Green

Purple

Carmine



Blue

Lake

Brown

Black

1930. Air stamps. Perf.



Black and sepia

Black and purple

BELGIAN CONGO—continued

1931. Various stamps surcharged

Stamps of 1928

Pictorial stamps of 1923-27



177 171/80

178

179

180



1932. Various designs. Perf.

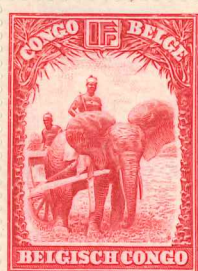


Grey

181/86



Green



Red-brown



190 b 1937

191 a 1937

BELGIAN CONGO—continued

1933. Air stamps. Perf.



Black



1934. Margins in black



Black

1936. As last. Surcharged in blue



1935. Perf.



Green



1936. As last. Surcharged in blue or red



2192

(21163) 01416
Last car

142a

1337/9 (1936)

1343/5 (1936)

1346/7 (1936)

1348/51

5970



RUANDA-URUNDI

1916. Stamps of Belgian Congo. Centres in *black*. Overprinted



RUANDA-URUNDI—continued

1918. As last, but centres in blue, surcharged "A.O." and new value in red



20/3



1922. As 1916. Surcharged



22/6

Contemporary stamps of Belgian Congo overprinted for "RUANDA URUNDI"

1923-27. Overprinted RUANDA URUNDI (Narrow overprint)



27/54 Cat next page.



RUANDA-URUNDI—continued

965

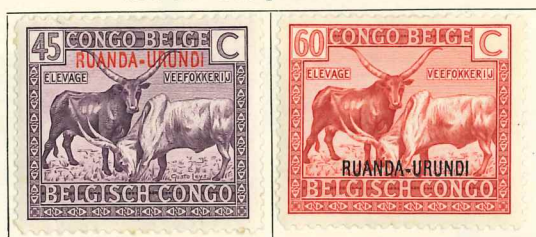
1923-27—continued



1925. Overprinted RUANDA-URUNDI



1926-27. Overprinted as last



1927. (Wide overprint)



10 c., green

Surcharged

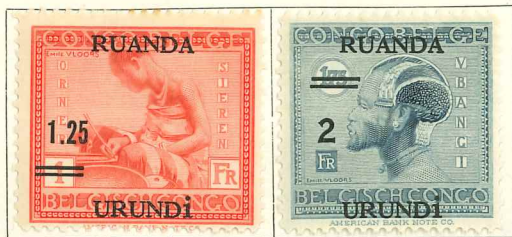


1930. Stamps of Belgian Congo, 1930, overprinted in blue or red



RUANDA-URUNDI—continued

1931. Stamps of 1927 surcharged



82/3

1931. Various views. Perf.



84/1

Grey



Green



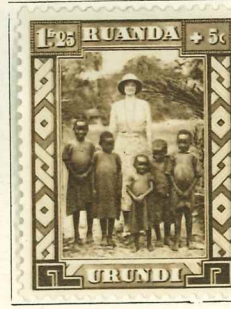
1934. Margins in black. Perf.



102

Black

1936. Perf.



103/5

Brown



D 53/60 (1924)



D 56/64



D 59/69



4956

147 00 (1944)