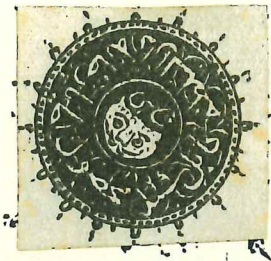


AFGHANISTAN

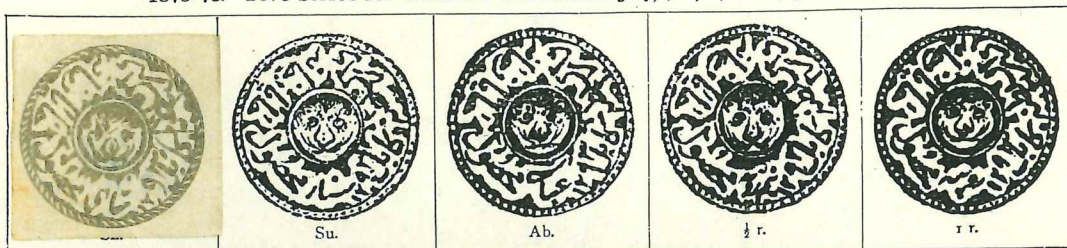
The values are shown by the characters given below.

Shahi. Sunar. Abasi. $\frac{1}{2}$ rupee. 1 rupee.
 شاهی سونار اباسی نیم روپے روپے

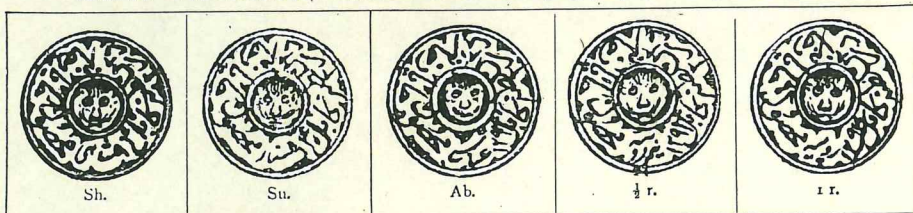
1870-76. Various large types



1875-76. Five series for different districts in grey, purple, black, green, or brown



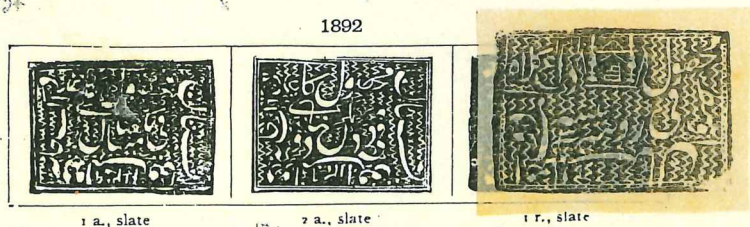
1876-77. Five series for different districts in grey, purple, black, green, or brown



1880-86. White or coloured paper



Kingdom of Afghanistan
1890-1893

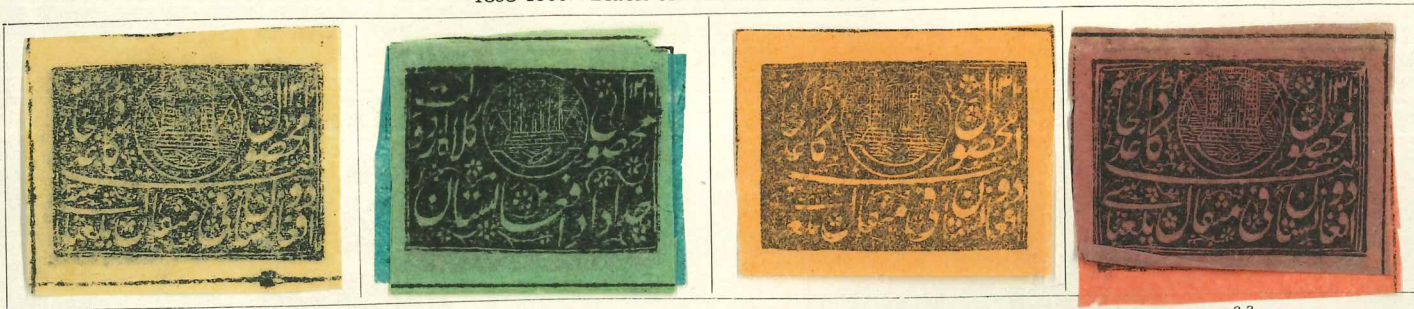


1892
A17. Prepared but not issued (registration)

All stamps until 1907 were imperforate. The usual form of cancellation consisted of cutting or tearing a portion of the stamp, and used specimens are therefore found in apparently damaged condition.
Up to 1891.

AFGHANISTAN—continued

1893-1900. Black on various coloured papers



150/15a

1 a.

147/147b/147a

2 a.

148b

149a/b

2 a.

1907. Imperf or Perf



156

1 a., blue

156a/b

1 a.
Green



157/163



1 r., green
158



166



169

1909. Perf.



1 r., brown

171/171a



1913-16. Perf.



(2 p.) olive-brown
165



167 (1 a.) red

1919. As 1909. Colours changed. Perf.



168



170 (2 a.) bistre



170a



(1 r.) olive
172a

1921. Large or small stamps. Perf.

King Amanullah 1919/20



177/176

23x29 mm



178



179

22½ x 23¼ mm



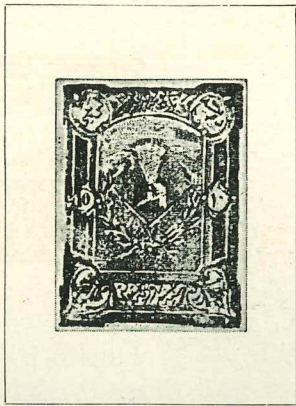
180

23x29 mm



AFGHANISTAN--continued

1924-25. Perf.



183 (10 paisa) chocolate

1926. As last. Imperf. or perf.



185

1927. Perf.



186 (10 paisa) magenta

1927. New currency Imperf. or perf.



187 15 Carmine



Perf.



1928. Perf.



191 Carmine

1928. Perf.



N 192 Dull blue



193 Green



194 Carmine

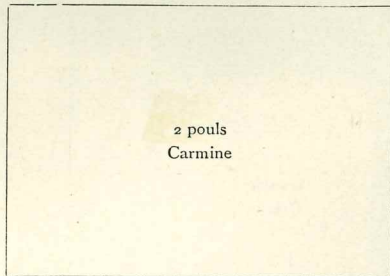


195 Ultramarine



196 Scarlet

1929. As 1927-28. Colours changed and new type (30 poul)



2 poul Carmine

N 205 A



207/19 A



208



210 Green



211



213

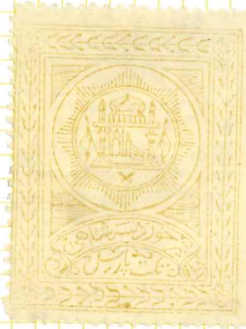




Parcel Post P173 Perf?



P178 Perf?



P172



P173 not issued imperf



P175



P173



P214



P182



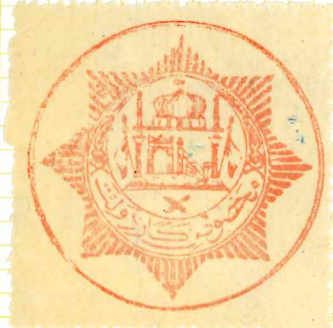
P183



P185



official 0173



P181

1931. Perf.



214 Red

1931-34. Various designs. Perf.



215 Claret



221 Brown



227



222



223



224



225



226



228



229 Green



230



231



232



233



234 Yellow



240



241



242



243



244



216



228



229 Blue



246



247



217

Red

AFGHANISTAN—continued

1931-34—continued



224 Marone



229



248b



218



230 Blue



271



231 Purple



250

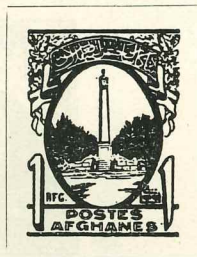


232 Claret

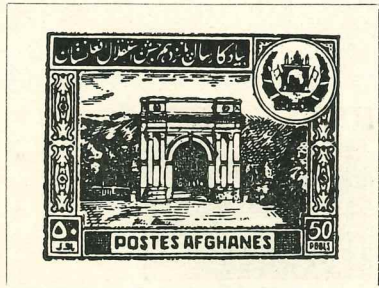
1933. Perf.



1932. Perf.



233 Red



235 Ultramarine

1935. Perf.



256/7



236 Green



244



253 (1936)



258 (1939)



280a (1939)

