

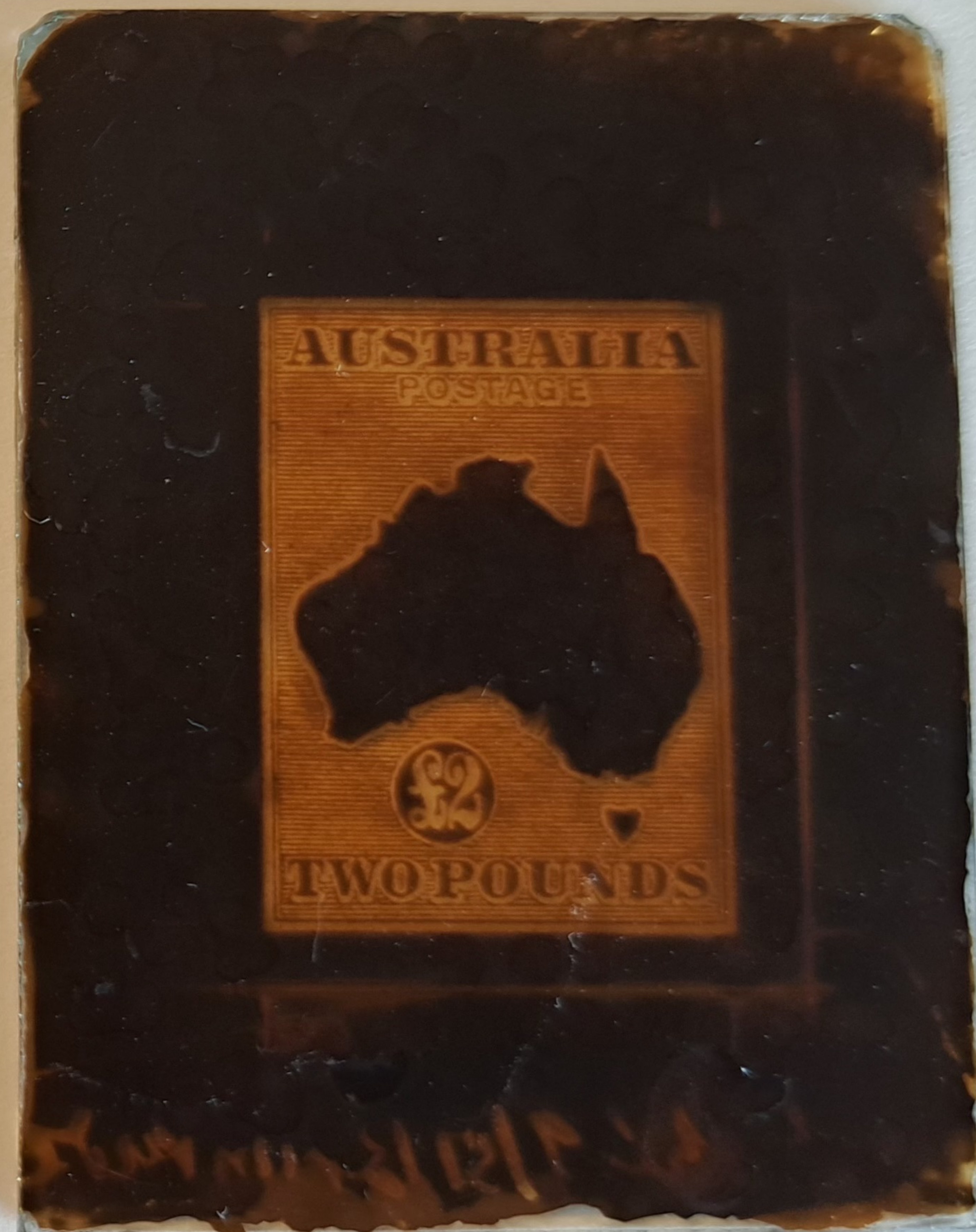


50-1201P 3/31

I

9/51

a







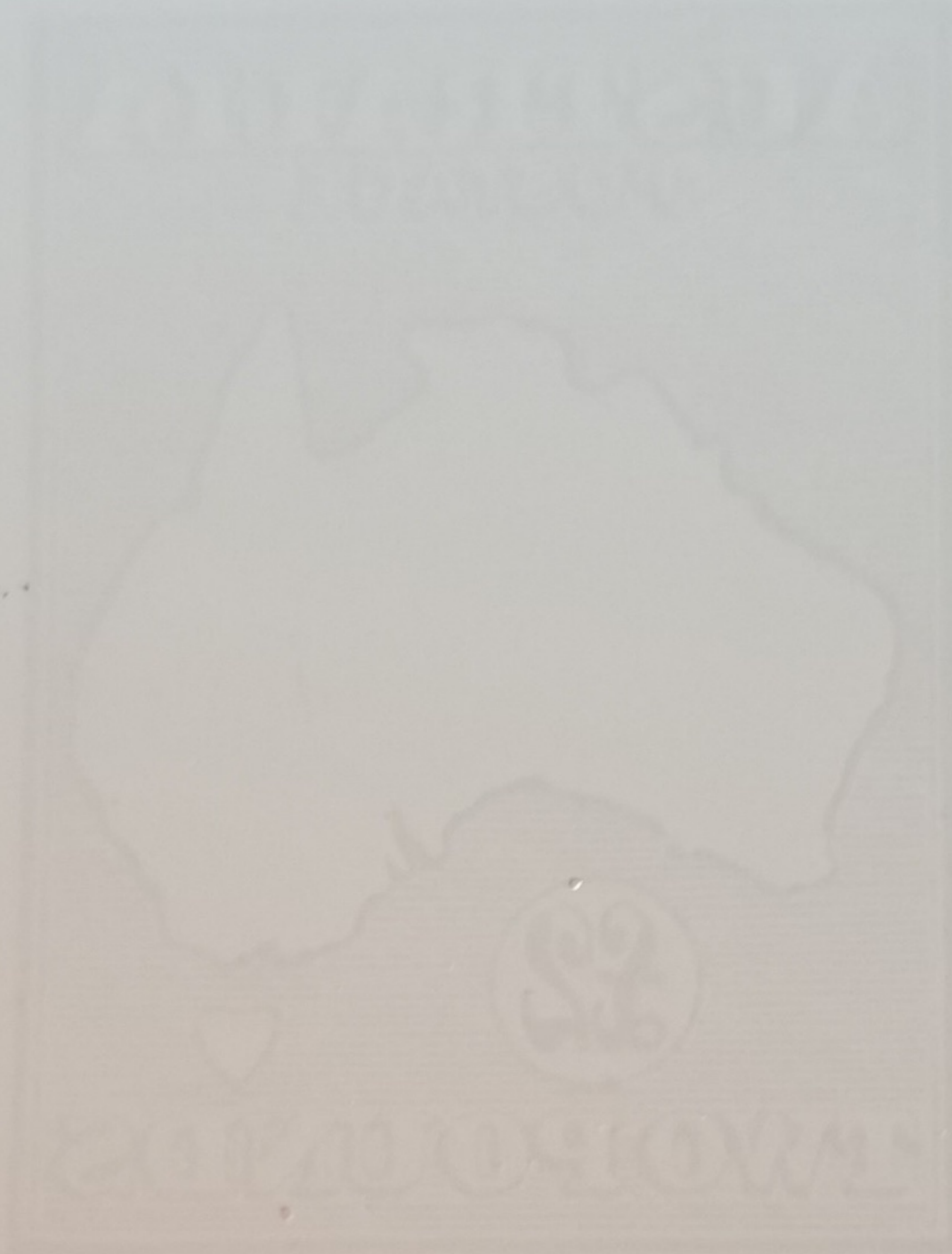
C-19

28/6



Muskelee K. 2



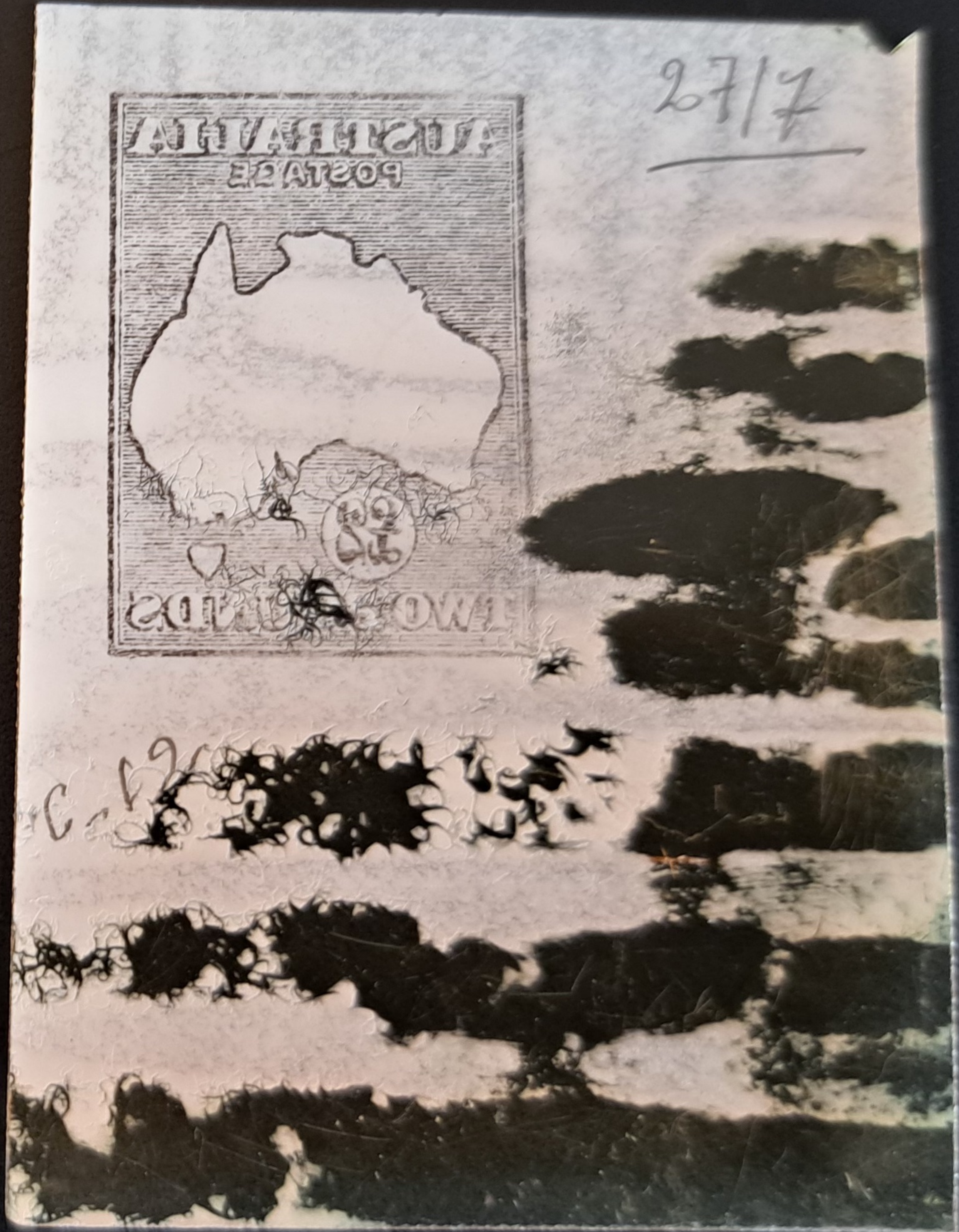


Sept 9/1915



9/8

C-12



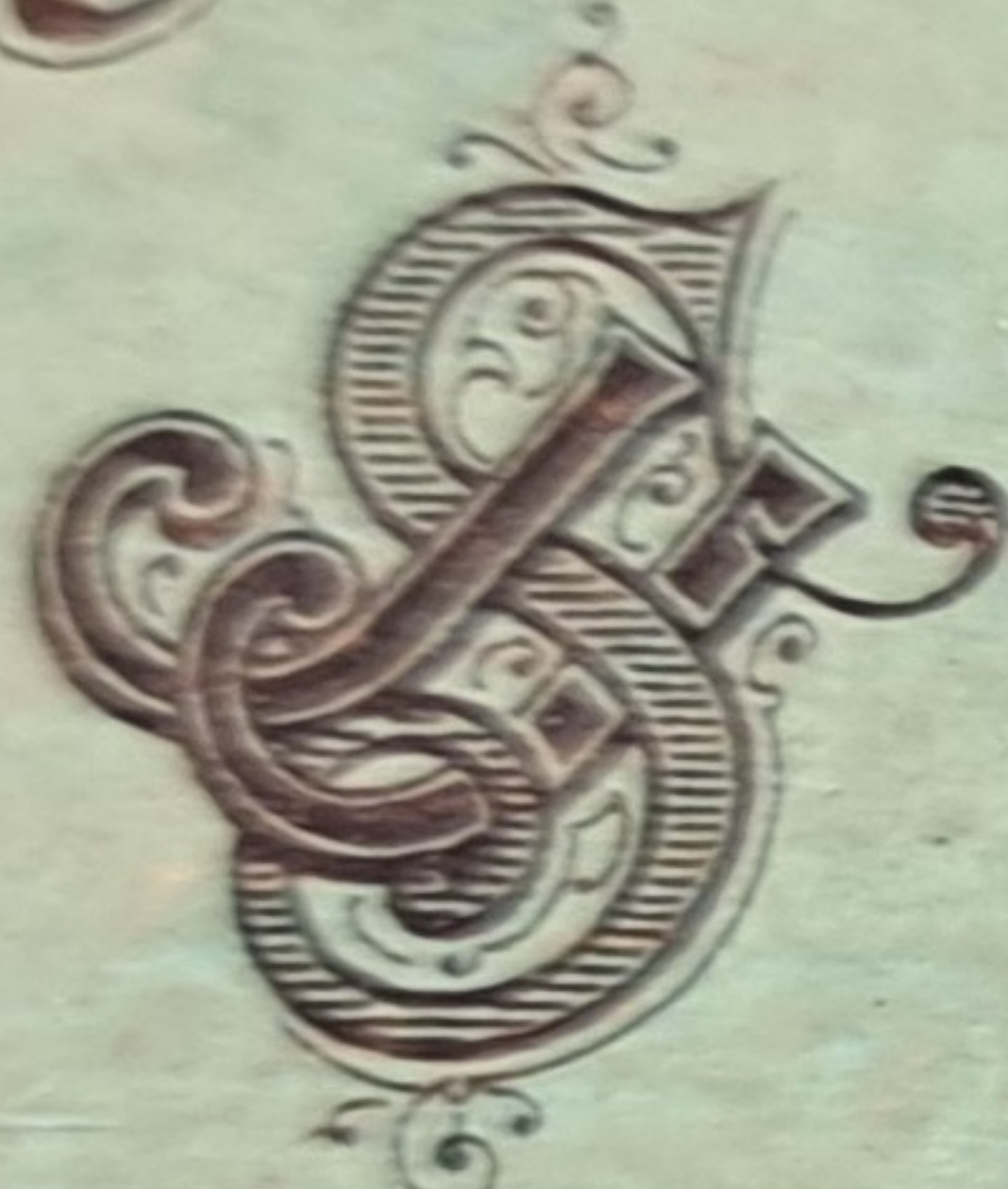
**HORS CONCOURS**  
MEMBRE DU JURY  
LIÈGE 1905 MILAN 1906

CRAINT LA LUMIÈRE ET L'HUMIDITÉ

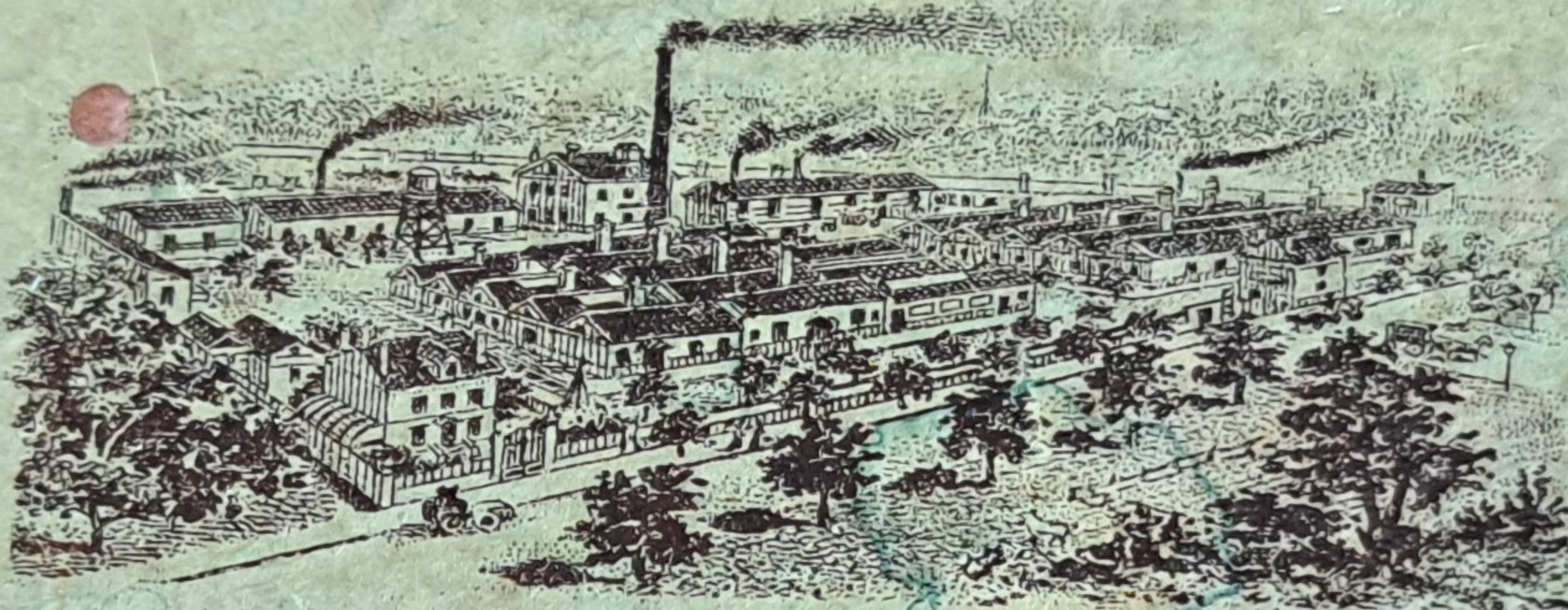
# PLAQUES INSTANTANÉES

## Au Gélantino-Bromure d'Argent

PRIX-FIXE  
2.10  
S<sup>te</sup> JOUGLA



MARQUE DE FABRIQUE



MARQUE DE FABRIQUE

SOCIÉTÉ ANONYME

### des Plaques Pellicules & Papiers Photographiques

# J. JOUGLA

N° de Fabrication



Dimensions

**9 x 12**

CAPITAL: 1 MILLION 500.000. FRANCS.

USINES A VAPEUR: JOINVILLE-LE-PONT (SEINE)