

1-14.
15?
17-27 missing.

651840

Wm T.
Small Crown.



Wm T.



1



1



1



1



5



5

Not deleted carbon
list - bleached blue
paper.

NO WHITE LINE



8a



8a



8a



8a



8



8a



DUBLIN 1846



14



14



14

1841
Wm T.
Small Crown

PLATES 374

BELFAST
1843.

WHITE LINE ADDED

13 is pale blue.

SMALL
CROWN.

T₂



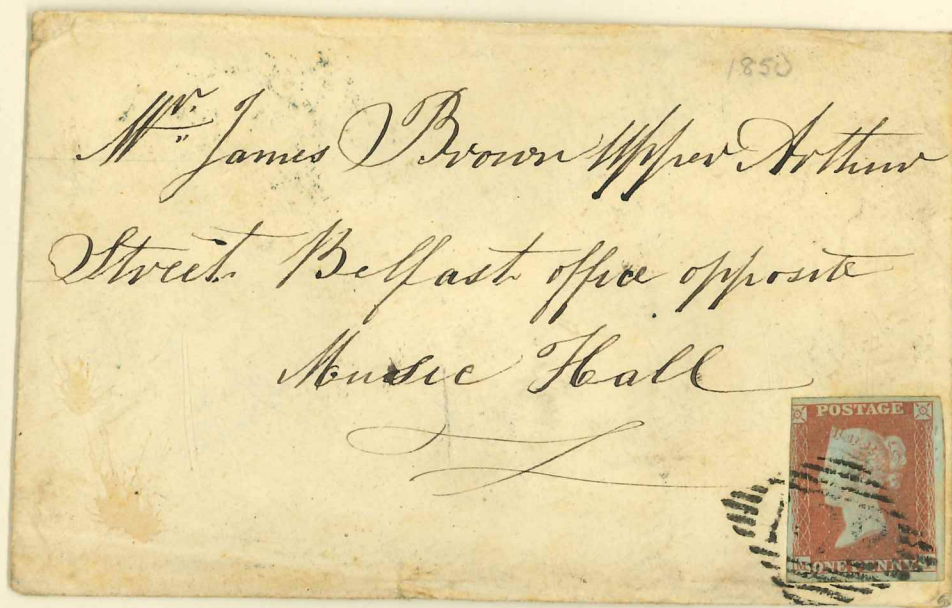
WM T₂.



12a.
Plate E 77B.
'A' inserted.

Rdron Row
27/3/57.

S.I.F.





WM T2

1855

wm T2?

P16



29.



P14

T2

24a.

24a.

24a.

P16

P16



29?

29?

29?

16

14

16

1858

P16

wm T4

Range brown



27?

27?

25?

WM T4

1858
1864
WM T4
LARGE CROWN.



WM T4



44



44



44



44.



45



45



45



47



46



45?



45?



45?

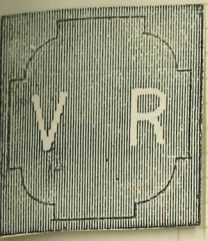


45?



46

1847-1854



WM T13.



58
1854



57
1848



55
1847



wrote 5 Sept 1850

James Brown Esq
Office, 59 Upper Arthur Street,
Belfast



54-61. Embossed.

half penny

WM T9.

PL8



49

8

PL20



49

PL5



7
8
~ 3



49.

1870

WM T9

"Half penny"

PL11



PL6



PL6



PL4

PL1



PL3



52

PL3



52

WM T4

Large
Post

PL5



WM T4.

PL3



PL7



PL3



52

PL3



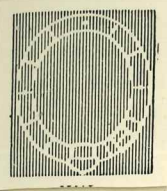
PL3



51.

PL4.





WM T16



66



66a



62

SMALL GARTER
BLUE PAPER

1855
1857
MEDIUM GARTER
T16



68a ??

T1 LARGE GARTER

T17
LARGE GARTER



66



WM T17



66



T14



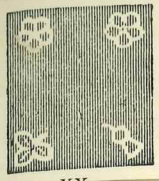
63
64 missing
65 T16



Nos 67
68 not listed in
Gillman 1965

1856

WM T20
EMBLEMS
21 OCT 1856



WM T20



EMBLEMS.

69



70
21 10 1856.



70



70



71



72
1, 11, 1856



72

W T20
EMBLEMS

No 70769

THE ROYAL PHILATELIC SOCIETY
LONDON



41, Devonshire Place,
London, W.1.

Meeting of.....13 NOV. 1969.....

In the opinion of The **EXPERT COMMITTEE** the item
submitted as

Great Britain: 1862-4 S.G. No. *88.* ¹⁹⁶⁵ _{£325.}

*9^d Bistre - unused in faded hair
lines*

Observations *Repaired*



H. D. Holmes Chairman
Ernest Heath
Thomas Allen
John Hill
J. Asher
R. S. ...
Stanley Gibbons

Submitted by *Stanley Gibbons Auctions Ltd*

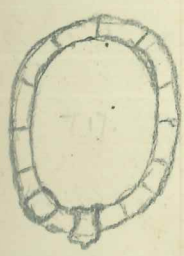
3) Rose white dot. May 1862. f120
Aug 1862. 50/-
Jan 1862. 50/-

T17
PL2
1/4/60

1862

81

No PLATE No



T17



82.
HAIR LINES.



75

EMBLEMS.
76
No WHITE DOT. 2. 76



81 T17
HAIR LINES
LARGE GARTER.
T17.



80
No HAIR LINES



81
HAIR LINES
No PLATE NUMBERS.
1862



81
HAIR LINES.

88?



83



83

1862.



85
HAIR LINE

1862.



86

EMBLEMS
T20
G1351-

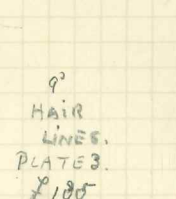
720



86

13150
1862.

MISSING.
93
STRAW
HAIR LINES
PLATE 3.
1100



88

92
HAIR
LINES.
PLATE 3.
1100



87?

1862.

T14.



89

1862.

PL1-2

MISSING.
V DEEPCREEN.
1/-
PLATE 2-3. DL1
1350

91



90

1862.

PL1-2

61

1865-67.

T20



92. 4



92 4
1865



92 4

T20
EMBLEMS.
1/3/1865.

PLATE No

T17



95
PLATE No. 1865 7
93.



95 8
1866



95 9
1867
94 missing.



95 10
1868



95 11
1869.

LARGE CANCELS
T17

PLATE No.

T20



95 12
1870



95 13
1872



95 14
1873

96 missing.

PLATE No.



97 5
1865



98. 4
1865

MISSING
9
1350
STRAW.

98 5
1866

MISSING
10
1450
RED BROWN

99. 1
1867.



PLATE No.



97 5



101 4
1865.

176



97 6

PLATE No.

114

Missing

109. PL10
111 9
112 13, 14, 10
114 PL 1-2.

102-117.

1867-1880.

WM T33
SPRAY.

WM T33



103 1867
4



102 1868
PLATE No. 5



102 1870
6



103 1871
7



102 1872
8
102 DEEPROSE



103 1872
9



102 1873
10



104 1867
PLATE No 6

No 7.



BLISH
PAPER

108 1869
8
No Hyphen.



109 1869
8
no hyphen.



109 1870
9
no hyphen.

MISSING.
£600.

109 1869
10



110 1867
4



114 1867
1

MISSING
10
WM T33
£175
RED BROWN
114 1867

PLATE No.

No No. 116
GIBBONS.



117 1867
4



115 1871
5



117 1871
6



117 1873
7

118-129.

Missing 120 3PL.

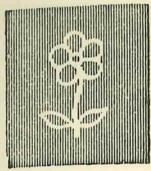
" 121.

~~128~~
129.
130-134.

1867-1880

WM 32.

SPRAY.



WM T33



120a 1867.

1

MISSING.

2/-

1300.
ALVE.

120 1866.

3

MISSING.

2/-

135
BROWN.

121. 1860.

PLATE No

MISSING.

BROWN 2/-

121. 135.



124 1872

11



124 1872

12.

1872

PLATE No

T33. spray



125. 1873.

12

PLATE No

126 - 129.

missing £5 orange. 133. £150 mid.
127 £65 . . .

missing unused.

1867-1878

WM 39.

MALTESE CROSS.

WM T39.



PLATE No.

126.
1 1867.

5/11/64
£5



PLATE No.

128
1 1878

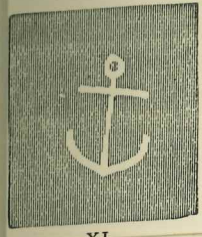
5/11/64
£1

MISSING.

£1
BROWN LILAC.
£30

PLATE No.

129.
1 1878



WM T40

WM
ANCHOR.



WM 2 ANCHORS

?
F18.

140 missing 135 letters.
T47.
143. wm. spray of blue.

138-142.

1875 1880



WM T47



BLUE PAPER

138 1875

WM. T47.
ANCHOR

PLATE No



WHITE PAPER.

139 1875



139 2 1875



139 3 1876

WM off
T48

PLATE No



141 1876



141 5 1876



141 6 1876



141 7 1877



141 8 1877



141 9 1877



141 10 1878

WM
T48
ORB.

PLATE No



141 1878



141 12 1878



141 13 1878



141 14 1879



141 15 1879



141 16 1879



141 17 1880

PLATE No



142 17 1880



142 18 1880



142 19 1880



142 19 1880



142 20 1880

WM
T48
ORB.

PLATE No.

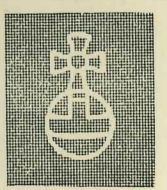
MALTA. POST MARK.

142 1880.
14.

Missing 143 WM spray
2 1/2 blue 3/2/73



WM T48



WM T48

Missing 145. Pale brown 6

1873
1880.

WM T33
SPRAY.

MISSING.
3'
ROSE



143. 1873.

144 1873.

PLATE NO



144 1873.
12

144 1874
14

144 1874
15

144 1875.
16

144 1875
17

144 1875.
18

PLATE NO.

No PL. 13 ISSUED.



MISSING.
£110 6
PALE BROWN £150 WMS.
PLATE 13 1873.

144.

144 1876
19.

1877.
20

145 WM T33
13 SPRAY.

PLATE NO



146. 1874

146 1875.

147 1876.

147 1878

147 1880.

PLATE NO. 13

14

15

16

17.



148 1873.

150 1874.

150 1874

148 1875

150 1875.

148 1876.

PLATE NO. 8

9

10

11

12

13

No 149
IN
GIBBONS.

MISSING.
1/-
PALE GREEN.
£600



MISSING.
40
VERMILION.
£1500

150 1876
14

151 1876
13
T33

152 1876
15
T17

152 1876
15
T17

152 1874
16
T17.

£2.5.0

£12.

£12

T17



152.
PLATE No 15



153. 16 1877



153. 16 1877

1877-

WM. T17.
LARGE CARTER

Missing
4
200
SAGE GREEN.

153 1877.
17.

T17



PLATE No.



154 1880.
17.

No
155
LISTED



156 1876

WM. T17.
LARGE CARTER



PLATE No. 157 21 1881



157 22 1881



157 23 1881

WM T49
IMP CROWN

WM T49.



PLATE No. 158 21 1881



158 20 1881.



158 21 1881



158 20 1881.

WM. T49

DIFFERENT.
POST MARKS.



PLATE No 159 21.



159 21
DIFFERENT POST MARKS.



159 21- 1883.

WM T49.
T 50 30

1880-1893

WM T49

IMP. CROWN

WM T49



160
PLATE No. 17



160 1880
17



160 1880
17



160 1882
18



160 1882
18



161 1880
17



161 1882
18

PLATE No.



162 6 1893
18

SLANTING
DOTS.



162 1893
18



162 1893
18

PLATE No.



PLATE No

PL 14



163 1891
13



163 1891
14



163 1891
13



13

1880-1881

WM T49.



164 1880-



165 1880-

WM T49



166 1880.



166 1880-

WM T49.



167 1880-



167



168. 1880-

WM T49.



169. 1881
DARK



169 1881.
LIGHT

WM T49



172 1881.
16 DOTS.
PALE
DIE II



172 12/7/1881
14 DOTS.
DIE I



172 12/12/81.
16 DOTS
DIE II

WM T49.

UNUSED

175-183

Bought May 1963.

1883-1884

Wm 40
ANCHOR.



BLUED. PAPER.



T 40

175 1863
£1 10 0



WHITE PAPER

180 1884
£2 0 0

WHITE PAPER

183 1884
£6 10 0

1883-1884

WM 40
ANCHOR.



178



181



183

F. A. MACLAUGHLIN,
F.R.C.S. ENG.

Telephone:
Belfast 665731

Mr. F. A.
For Profes

Master John

№ 70772

THE ROYAL PHILATELIC SOCIETY
LONDON



41, Devonshire Place,
London, W.1.

Meeting of..... 13. NOV. 1969

In the opinion of The **EXPERT COMMITTEE** the item
submitted as

Great Britain: 1884 S.G. No. *185* *Provas*

£1. Brown Lilac - unused. Has had

Specimen removed and reprinted.

Observations



N. D. Holmes
Chairman

Ewart. Yerrish

Thomas Alley

John H. H. I.

John

Frank

James

Submitted by

Stanley Gibbons Auctioneers Ltd

1883
1884

Sup. Crown.
T49.



WM T49.



187 DARK



187 DARK.



187 LIGHT.



187 LIGHT.



188



189



188



190



190



35/-

191



10/-

192



193.



193.



194



195

1893.



196.

1887
1892

WM T49.

IMP CROWN.



WM T49.



197



198

200

201



202



206



205



206



207



208



209



210



213



211



211



213



214



214

1887
1892
WM. T 49.



197B.



198

200

201



202

205

206

207



208

209

210



1900

211
LIGHT

211
DARK

213

213.
COLOUR CHANGE



214.

1902
1910

Wm. T49.
IMP. CROWN.



WM T49.



217.



218



216



219.



221



225



230



232

2295.



236



241



242



245



249



250



254



257.



257

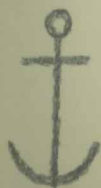
1902-1910

Wm T40
Anchor.



262

£2.5.0



T40



263

£3.0.0

265

£7.10.0

1902
1910
W.M. T49
MR. CROWN.



215



216



217



218



219



221



225



230



232



236



236



241



246



242



245



249



250



254



257 314



234



257



220



270



220



T49



220

1902

1911

1902

1902-1910

Wm. T40
ANCHOR.

Anchor
T40



262 1902



263 1902



265



32 Wellington Park,
Belfast, 9.

MacLaughlin,
Professional Services

D. Templeton

Missing 267-320
Hanson Somerset No

322 - 337

321. 323. 332
326. 333
Missing 329
330

23

T98 DIE A

T98 DIE B

1911-1912

UNUSED.

T49

WM 49.



322

324

T98 DIE A

T98 DIE B



322

325

T99 DIE A

T99 DIE B

T49



327

329

G.R.
Crown

T99 DIE A

T99 DIE B



327

331

T98 T100 DIE B

T100 DIE B

1912 Any.
T100

Book.



334

335

T100 DIE B

T100 DIE B

Red stamp.

WM. INV.



337

336

T101 DIE B



339

T101. DIE B.

1912
JAN I

w T49



339

T102 DIE A



342

T02 DIE A



342

T101 DIE A



344

INV.



344

T101 DIE A.

1912
AUG.

w T100



345



345

T102 DIE A.

32 Wellington Park,
Belfast, 9.



348



348

T101 DIE?

1912
DEC.

w T103

MacLaughlin,
Professional Services



350



350

T102

w T103

Edward J. Keenan



DEC 1912

T103.

ROYAL CYPHER.
MULTIPLE.



350a.
No CRUSS ON
CROWN.

1912-1922
wt 100



359



351



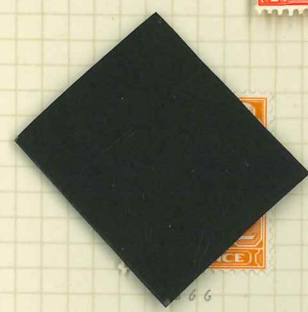
368



364



368



366



363



372



375



378



381



385



387



390



393a



392



394



396

001M

Missing
315-320

De Habitu
2/6 ref
5/-
1/-

Missing

110

med.

592 9^e epate 1913.
9^e obverse 1922.

351-396

1912-1922

WM 100



COLOUR VARIATIONS

WM 100



Murray 397-398.

399-404

≡ HOR LINES.

404-417 Murray

WM TILD.

SINGLE CYMBR



400



401



402

403.

f15

397-398 Missing

399-404

404-417 Missing

WM. T. PRO
SINGLES OFFICE

DE LA RUE.



Horizontal Lines



400
405
414



401
409
416



403
412
417



403

no 7^d or 8^d in set.

418

- 429

1924-1926

TIII



418



419



420



423



421



422



424



425



426



427



428



429



2/6
5/-
10/-
no.
new.
1/1

used

418-429.

27

1924-26.
W111



stan
426.
P 24
Lithani.

COLOUR VARIATIONS

WM III



UNUSED & USED

BRITISH EMPIRE EXHIBITION

1924
1925

W111



430



431

23.4.24



432



433

9.5.25



1924
1925

W III.

WATERLOW



434



435



436



437



434



435



436



437

DARK.



437

LIGHT

UNUSED + USED

437

10 MAY. 1929

WM 111.

BRADBURY.



438



2 10 0

later £12.0 0



438

£500

later £8.00

438 WM 117 £1 black £12

1934
1936

W 111



439.



440



441



442



443



444



445



446



447



448



449



449



440

used.

439-449 31

1934

1936

will.



439



440



441



442



443



444



445



446



447



448

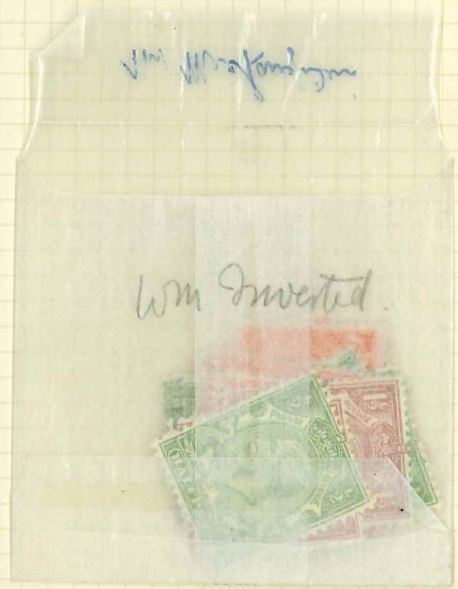
X



449

Misplaced w/ments

111



UNUSED.

Missing - 1934.

450 - 452.

31A

NB →

no 21 issued.

W110.

Oct 1934



Horizontal +
diagonal lines.



450



WM 110.



451



452

VSED

450-452

no fl. rated.

Oct 1934

WM 170



450



451



450



452

SILVER JUBILEE.

7/5/1935

W 111



453



454



455



456

X bad specimen



453

Different emblem



454



455

Different emblem



456

EDWARD VIII

UNUSED.



EDWARD VIII

used. $\frac{1}{2}$ / $\frac{1}{2}$

See 2nd on envelope





Mr F.A. McLaughlin, F.R.C.S.
32, Wellington Park,
Belfast.



Mr. F.A. MacLaughlin, F.R.C.S.,
32, Wellington Park,
Belfast.

*145
150
186
5
2*

Hooton Mitchell

F.B.O.A., F.S.M.C.

18 CALLENDER STREET,
BELFAST

Telephone: Belfast 24911

27 May 1958

Dear Mr MacLaughlin,

I have always kept my eye open for the G.B. items that you need, but although I have watched closely in the many approvals that pass through my hands, I have been unlucky. -Until yesterday, when I found two of your "wants" in the same collection! They are the two "nine pence" values, S.G.87 and 98. The S.G.98 is a very good stamp to have, usually rather washed-out in appearance, and very rarely seen.

Many thanks indeed for all the new "customers".

With kind regards.

Yours sincerely

Hooton Mitchell

note date



Mr. F.A. MacLaughlin., F.R.C.S.,
32, Wellington Park,
Belfast.



NO 72376

THE ROYAL PHILATELIC SOCIETY
LONDON



41, Devonshire Place,
London, W.1.

Meeting of - 8. APR. 1970

In the opinion of The **EXPERT COMMITTEE** the item
submitted as

Great Britain: 1848 S.G. No *16a*

1d Red brown - Roulette 12 by Archer

used are faked roulettes.

Observations

W. P. Holmes
Chairman

Edward Young

Thomas Allin

John H. H.

Beaumont

Manly

Submitted by *M. L. Rosen Esq*

Encl.
2 stamps



BONS AUCTIONS Limited

Drury House Russell Street

London WC2B 5HD

Telephone 01-836 7941

22nd November, 1971.

... regarding the unsold
special Great Britain
two weeks after the
doubt with this added
satisfactory sale result.

... two stamps which
are, as both stamps

... will be forwarded in due

... ly,
... tions Limited

1 SEPT. 1936

W 125

15x14.

Hannover.



457
1/9/36



458
14/9/36



459
11/9/36



460
1/9/36



WM 12V.



WM 12V



457



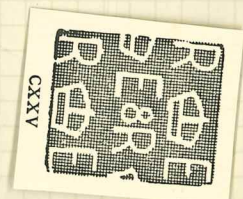
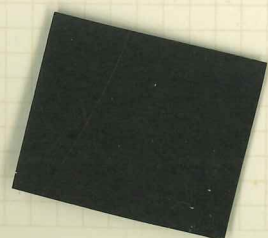
458



459.



460



used & unused.

CORONATION

461.

34

13/5/1937

W127

Hammam



461.



461

DARK

1937
1947
W127

462-466
was inserted
by mistake?



463
10 5 37



462
10 5 37



464
30 7 37



465
31 1 38



466
10 5 37



467
31 1 38



468
21 11 38



469
21 11 38



470
30 1 39



471
27 3 39



472
27 3 39



473
1 5 39



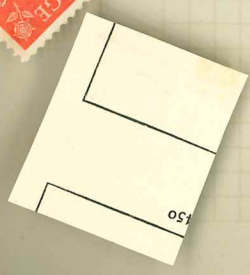
474
1 5 39



474a
29 12 47



475
1 5 39



DARK.

1937

1947

W127



Wm. Inverted.

USED,

DARK.



476 - 478B.

1939
1948
wm 133



476
4 9 39.



476a.
9 3 42



477
21 8 39.



478
3 10 39.



478a.
30 11 42.



478b-
1 10 48.

USED.

476 - 478B



Inschreven.

Posten van Adhesive Postage
Stamps.

479-484.

38

6/5/1940

WM 127.

Hanson.



479



480



481



482



483



484

USED



LICHT

1941
1942
W127



486
11 8 41



485
19 41



487
28 9 42



489
21 7 41



488
6 10 41



490
3 11 41



468



469



470



471



472



473



474



474a



486



474b

1941
1942
W127



underrundet

VICTORY

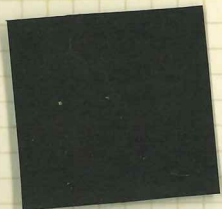
491 492.

493 494.

41

11/6/1946

W127



491



SILVER WEDDING 26/4/1948
W127

L1
underrundet



492.



ROYAL SILVER WEDDING.

493-494

26448

W127



493



494



USED.

R BELFAST 96
No 3837

REGISTERED LETTER.

NO COMPENSATION WILL BE
PAID IF A RECEIPT IS NOT
OBTAINED FOR
AT THE TIME



POST OFFICE
EXPRESS
DELIVERY

TO **MR. H. ELLIMAN**

286 ANTRIM RD

BELFAST

Registration

Feed. paid
(See note on back)

used unused.
3rd Anniversary of Liberation

CCHANNEL ISLANDS.

494 a.

42

10/5/1948

W127 C/B



USED



75th ANNIVERSARY OF FOUNDING OF UNIVERSAL POSTAL UNION

10/10/1949

W127



499



500



502



501



500



OLYMPIC GAMES.

29/7/1948

W127



495



496



498



497



Unused.

COLOURS



1950
1951
W127



503
3 5 51.



504
3 5 51.



505
3 5 51.



506
3 5 51.



507
3 5 51.



508
2 10 50.

USED,

COLOUR CHANGE.



UNUSED.

509 - 512.

46

2 pages.

3/5/1951

W 133

P 11-12

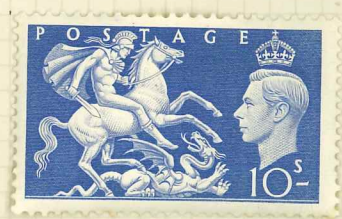
WATERLOW.



509



510



511



512

GvIR

USED.





FESTIVAL OF BRITAIN 3/5/1951

w 127



513



514.















Make 10.

Scottish thin type postmark.

BELFAST
FE 4
1858

BELFAST
AP 5
1859

66. used in
MATA.
23.
first "M"
cancellation.

DROGHEDA
OC 31
1859

BALLYMONE
NO 12
1859













161



138



149



140



147



149



160



147



144(7)



138



138



149



140



140



140



138



145



138



150(7)



138



138



145

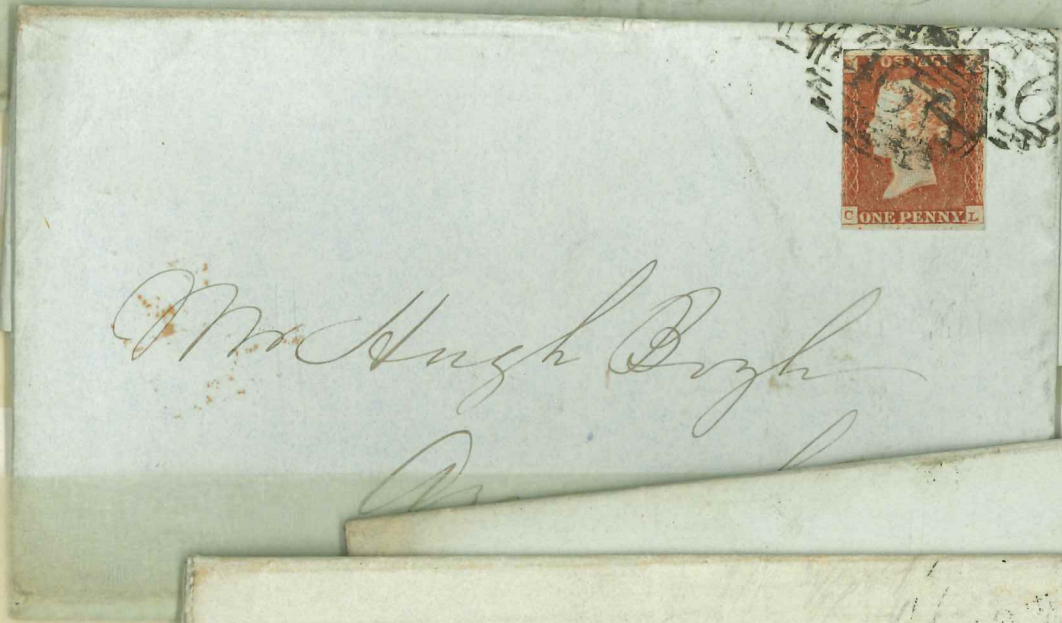








*Mr Hugh Boyle
Killeen Armagh*



Mr Hugh Boyle



*Hugh Boyle Esq
Killeen
Armagh*

Zum Durchhalten
Altstoffe sammeln

POUR TENIR
RÉCUPÉREZ LES
MATIÈRES USAGÉES

HELVETIA

HELVETIA



PAR AVION
BY AIR MAIL
PER LUGPOS

LUFTPOST
PAR AVION



CAK ILE
PAR AVION

PER LUCHTPOST
PAR AVION

R BPXELLES 1
BRUSSEL 1 243



PAR AVION

BY AIR MAIL
B.O.A.C. البريد الجوي

POST OFFICE
EXPRESS
DELIVERY

空航
PAR AVION

This Book belongs to:-

C. J. McLaughlin
32 Wellington Park
Belfast

Phone 65731

PENNY RED DEFINITIVE.

Watermark. T4.

Large Crown.

Engraved by Mr. Frederick Heath.

Printed by Messrs. Perkins, Bacon & Co.

Perforation. 14.

The numbering of this series of plates followed after that of the previous 1d. stamp, last printed from Plate 68. Plates 69, 70, 75, 126, and 128, were prepared for this issue, but rejected owing to defects; hence stamps from these plates do not exist. Plate 77 was also rejected but some stamps printed from it were used. Seven or eight examples only are known. Plates 226, 227, and 228, were made but not used.



71.



72.



73.



74.



76.



78.



79.



80.



81.



82.



83.



84.



85.



86.



87.



88.



89.



90.



91.



92.

Watermark T4.



93.



94.



95.



96.



97.



98.



99.



100.



101.



102.



103.



104.



105.



106.



107.



108.



109.



110.



111.



112.



113.



114.



115.



116.



117.

Watermark T4.



118.



119.



120.



121.



122.



123.



124.



125.



127.



129.



130.



131.



132.



133.



134.



135.



136.



137.



138.



139.



140.



141.



142.



143.



144.

PENNY RED DEFINITIVE.

Watermark.T4.



145.



146.



147.



148.



149.



150.



151.



152.



153.



154.



155.



156.



157.



158.



159.



160.



161.



162.



163.



164.



165.



166.



167.



168.



169.

147

148

149

150

151

152

147

148

149

021/146

151

152

153

154

155

156

157

158

153

154

155

156

157

158

159

160

161

162

163

164

159

160

161

162

163

164

165

166

167

168

169



165

166

167

168

169

170



171

172

173

174

175

176



177

178

179

180

181

183



183



184



185



186



187



188



189



190



191



192



193



194



195



196



197



198



199



200



201



202



203



204



205



206



207



208



209



210



211



212



213



214



215



216



217



218