



CARTĂ POSTALĂ



D. Herr

Y. C. Machanek & Comp

la

in
Jassy



S

21/11. 1900

Asocia. Imperială
Bucurest,



CARTĂ POSTALĂ



Monsieur Frank Carpenter

la *Amerique*

Georgetown
British Guyana



CARTĂ POSTALĂ



Herrn Hugo Koepsen

la

Berlin S.



58 Wasserthorstrasse 58
Lampenfabrik



CARTĂ POSTALĂ

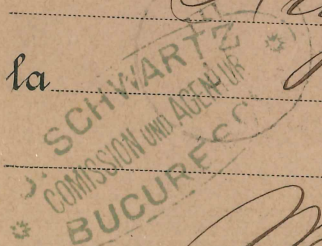


D

Hugo Koepsen

la

Berlin



Wasserthorstrasse 58.



CARTA DE POSTA



la

M. Hermann
A. Bestelmeyer
Hamburg

OBSERVAȚII PENTRU ÎNTEBĂUINȚAREA CĂRȚILOR DE POSTA

1. Cărțile de Postă se vîndu particularilor la biu-
rurile telegrafo-postale pe valoarea lor nominală.
2. Pe fața Cărții nu este permis a se scri de cît
numai adresa, ear dossul este rezervat pentru
correspondență.
3. Adresa urmează a fi scrisă exactă și lămu-
rită și pe cît posibil completă.
4. Nu se plătesce nimicî aducătorului.
5. Cărțile de Postă se potî recomanda ca scriso-
rile, plătindu-se dreptulî de înregistrare.



CARTĂ POSTALĂ.



la
M. Hermann
R. Picard
Rue St. Pierre 14



Chaux-de-Fonds
(Suisse)

OBSERVAȚII PENTRU ÎNTEBĂUINȚAREA CĂRȚILOR POSTALE.

1. Cărțile Postale se vîndu particularilor la biu-
rurile telegrafo-postale pe valoarea lor nominală.
2. Pe fața Cărții nu este permis a se scri de cît nu-
mai adresa ear dossul este rezervat pentru corres-
pondență.
3. Adresa urmează a fi scrisă exactă și lămurită și
pe cît posibil completă.
4. Nu se plătesce nimicî aducătorului.
5. Cărțile Postale se potî recomanda ca și scriso-
rile plătindu-se dreptulî de înregistrare.

e obaz. Ruschka

1880



CARTĂ POSTALĂ



De Hojan Nicolau



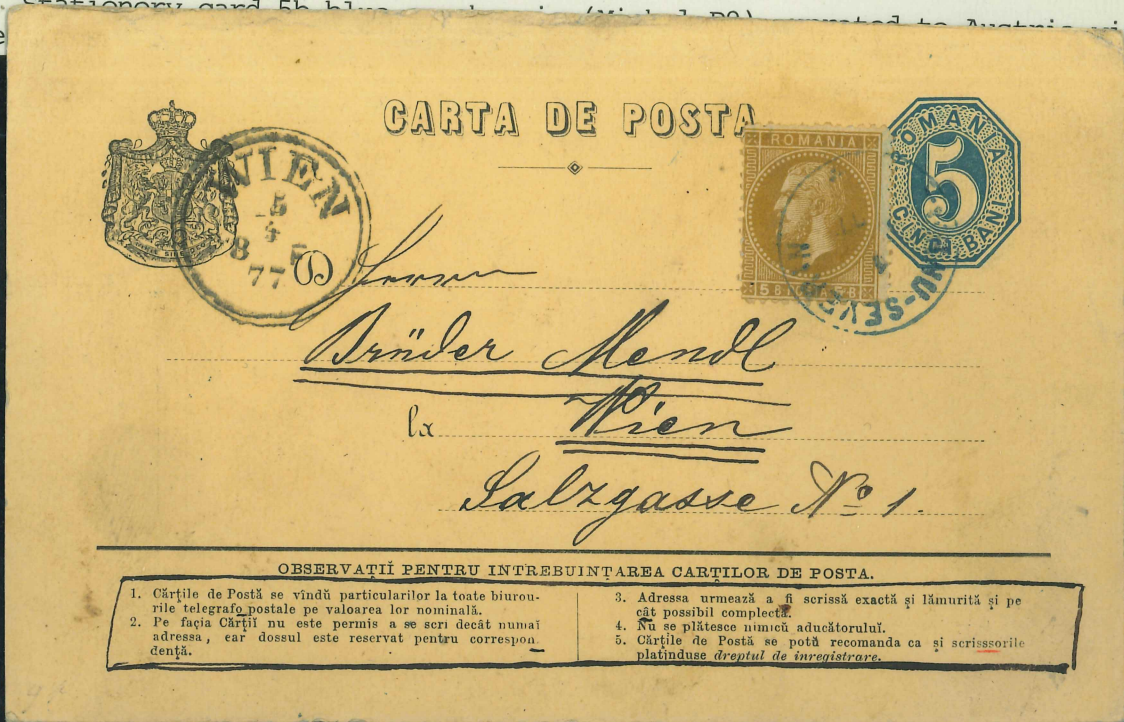
la

Ruschka

RUMANIA

EURO-YU STAMP COLLECTING

1877. Stationery card 5b blue, uprated to Austria with 5b bistre adjacent.



EURO-YU STAMP COLLECTING

RUMANIA - Railway Cancellations

'POSTA AMBULANTA - BUCURESC - 172 KANI 5 JUL 75' in oval frame, struck in blue on Stationery card 5b blue, uprated for postage to Austria by 1872 Paris printing 5b bistre, adjacent arrival postmark 'NEUBAU WIEN 8.6.75 9. E.', diagonal crease through card clear of franking and postmark.



No 106. Isale
Gluie Prefier alu Onor.
Curși de apeli ~~_____~~
din Craiova
La Craiova



Monsieur
Jean P. Lographos
à Berlac



2695

RECOM



Monsieur
Monsieur Auguste Savine
Fils.

à
Marseille

Rue Thubaneau 33.



2718

1577 - ROMANIA TO FRANCE
R. 100-1577 - 10th Feb - early R. 100
C. 100 - M. 139441
178

799

R. B.



Domni - Talle

7855

Domnului Administratori alii
Sunturilor Nabalui

RECOMANDAT

La Bucuresti

100 - 100
100 - 100
100 - 100
100 - 100
100 - 100

10 MAR. 1877



Domnului
Doctoru Andreeli Fotino-
pendru. Dna Comd. N. Micbais
la Bucuresti

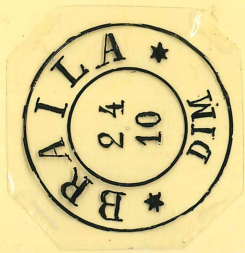


RUMANIA

EURO-YU STAMP COLLECTING

1872. Paris printing 15b reddish-brown and 25b orange, sharing 'GALATI' c.d.s., adjacent curved 'RECOMMANDEE/GALATZ' with manuscript date on envelope. On reverse BERLAND (14.3.76) transit and blue 'VASLUIU' same day arrival postmark, envelope with some staining. On reverse embossed crowned monogram and three small wax seals. Scarce item.





SCHAUBEK

EURASIA



26854 1/13/25

LOT: 1550
1872 EL. fr. 10b. canc. T. SEVERIN*DIM**22/10 blue, arr.
BRAILA*DIM**24/10 black.

NR.

LOT
1550

BRAILA-GALATZ
14 SEP 76
CURSA IV

BRAILA-GALATZ
14 SEP 76
CURSA IV

Monsieur
Nicolaon Calamari
Galatz

BURASIA



96855/43/25

LOT 1549

1876 EL fr. 3x5b. (M. 38) canc. ambulanc. BRAILA-GALA
TZ CURSA IV 14 SEP. 76. Nice & scarce cancel.

1- 26855 DM

250

NR.

LOT

1549



EURO-YU STAMP COLLECTING

RUMANIA

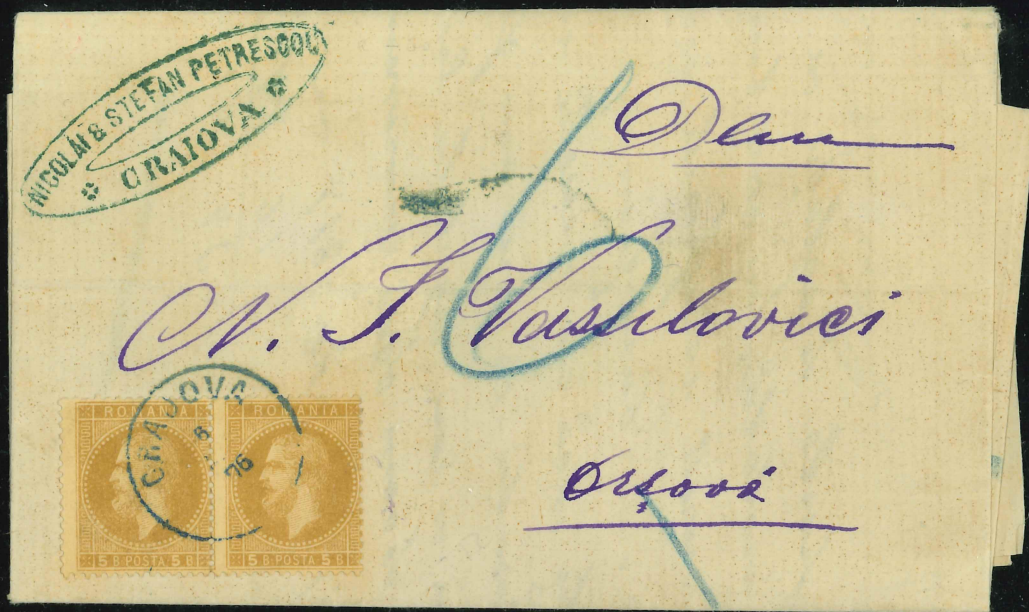
1876. Bucharest printing 5b bistre and 1872 Paris printing 25b deep-orange, tied by thimble 'BRAILA 27 JUN 76' d.s. to entire, French 'ROUMAINE-AVRICOURT 2 JUIL 76' c.d.s. in blue adjacent. On reverse part of MARSEILLE arrival postmark. Fresh and fine.



EURO-YU STAMP COLLECTING

RUMANIA - PRINCIPALITY

1872. Paris printing 5b yellow-brown, a pair, tied by contrasting 'CRAIOVA 6..76' c.d.s. in blue, to entire to Hungary, postage due marking '6' in blue. On reverse 'ORSOVA 5.8.76' arrival postmark. Fine and scarce.





7/2 9

Monsieur
Monsieur Nicolas Lographos
Galatz



Dlor

Frați A. Eschenas
peo Craiova



76/78

BANQUE DE ROUMANIE
4 SEPT 1874
GALATZ.

JASSY

M. Signior
D. M. Vasopulo
franco.
Triesti.



Handwritten signature

N. GERMANI & FILS
BUCAREST.

Gg. Cernatescu
la Domeni
Bucarest



BOLGRAD

Domniului Menachemiu
Fermo Fils.

Strada gabrovena
in oraulu Bucuresti

60.-
Stampila Bolgrad

EURO-YU STAMP COLLECTING

RUMANIA - PRINCIPALITY

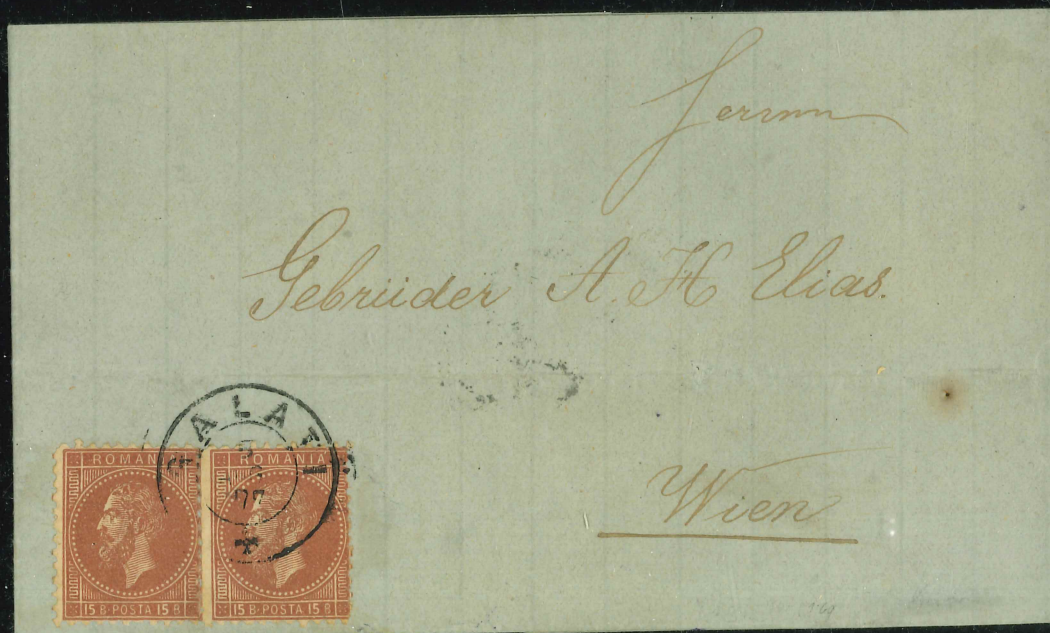
1876. Bucharest printing 5b bistre (2) and 1872 Paris printing and pair of 10b blue, all tied by 'BOTOSCANI 19 DEC' c.d.s. to small envelope to New York. On reverse c.d.s. 'NEW YORK JAN 1' and 'PAID ALL' c.d.s., envelope with small faults and paper adhesion to one 5b, though attractive and scarce.



EURO-YU STAMP COLLECTING

RUMANIA - PRINCIPALITY

1877 (5 Aug). Entire to Vienna, franked 1876 Bucharest printing 15b reddish-brown, tied by one 'GALATI 5 AUG 77' double circle d.s. On reverse (7.8.) arrival postmark. Rather heavy filing fold, clear of stamps.





Madame



13 1/2 14

26 46A

1876-13 1/2 14



John M. Fisher

Geo

Stokany



*Signor
Andrea S. Vagliano*

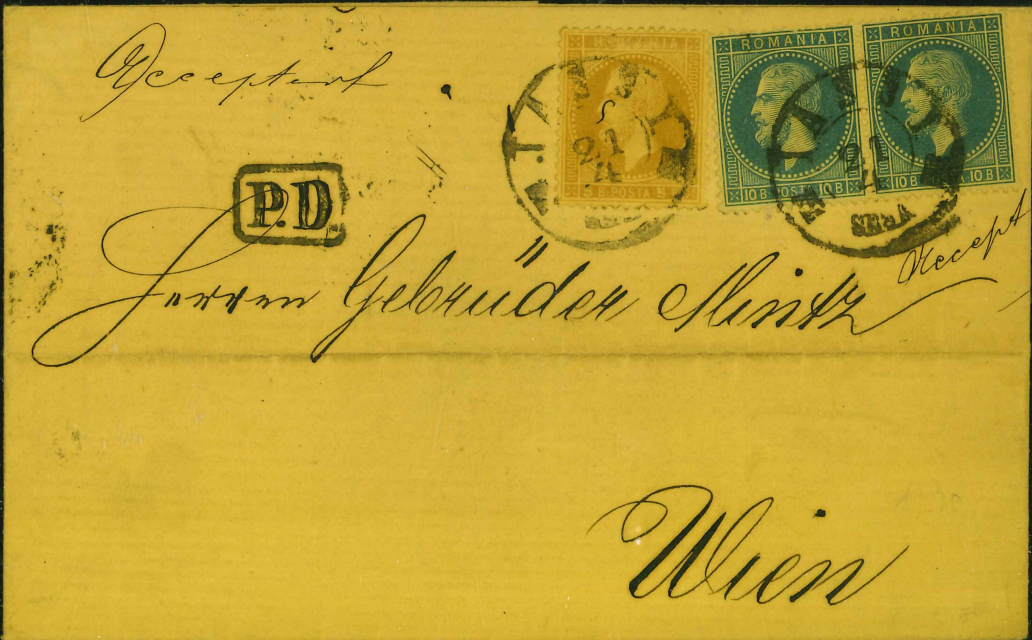
Costantinopoli



RUMANIA - PRINCIPALITY

EURO-YU STAMP COLLECTING

1872. Paris printing 10b blue, a pair, with 5b yellow brown, tied by large double circle 'JASSY 21 4 SERA' (1873) d.s., boxed 'P.D.' adjacent, to entire to Austria. On reverse 'WIEN' and 'LEOPOLDSTADT WIEN' (24.4.) arrival postmark.





RUMANIA

RUMANIA. 1876. Registered envelope to Bucurest bearing SG 109, 15 bani brown red and SG 110, 25 bani orange tied by Pitesci double ring in blue with boxed hand-struck registered and boxed PD in blue. A very attractive item.

RUMANIA

(1882). "COMPTOIR GENERAL" cover to Roma, Italy, franked with 5b blue-green of 1879 colours changed (SG 126a), paying UPU printed matter rate. At back Italian distribution number.

£65.-



ROMANIA. October 1880 cover to Paris, has been opened for better display, franked by mixed issues 1879 perf 11½ 5b emerald green pair and two, one on reverse, 1880 15b deep brown tied by two different Bucarest cds's; with 'Roumanie' entry marking in blue. Rare and appealing cover, slight corner perf fault to one 15b.

L175-



EURO-YU STAMP COLLECTING

RUMANIA - PRINCIPALITY

1879. 5b emerald green, two pairs and a single, all of SECOND BUCHUREST PRINTING, tied by large double circle 'BUCURESCI 20 DEC 83 V5' c.d.s. to envelope to France, blue 'PARIS ETRANGER 24 DEC 83' c.d.s. just tying two stamps. A nice multiple franking.



RUMANIA - PRINCIPALITY

1879. 5b emerald green and 10b crimson (a pair) tied together by one strike of 'PLOIESTI 19 FEB 82' c.d.s. to commercial envelope with 'WIEN 12.2.82 Sp. III 4½ N' arrival on reverse. The 5b small blemishes though very fresh and attractive.



EURO-YU STAMP COLLECTING

RUMANIA - PRINCIPALITY

1872. Paris printing 10b blue, 15b reddish-brown, each tied by GALATI (1875) c.d.s. to envelope to Constantinople, address also in Arabic script. On reverse arrival postmark of the Austrian Lloyd Post Office. Attractive and scarce.



EURO-YU STAMP COLLECTING

RUMANIA

1876. Entire to Vienna, franked 1872 Paris printing 10b bistre and vertical pair 10b blue, neatly tied by blue 'CRAIOVA 16.3.76' c.d.s. On reverse ORSOVA (20.3.) transit and 'WIEN 20.3.76-8F' arrival. A fine cover.





EURO-YU STAMP COLLECTING

RUMANIA

#55

#62

1877. Entire to Vienna, franked 1872 Paris printing 5b bistre-brown and 1876 Bucharest printing 10b blue, a pair of each, cancelled by 'GALATI 28 JUL' c.d.s. On reverse 'WIEN 30.7.77-IT' arrival. An attractive and uncommon mixed franking.





Messieurs

Jacquemont & Eug Richard

Marseille

JACQUES BRENNER
GALATZ

GALATZ
19
JAN
14

MARSEILLE
18

Divisia chirurgicală a Spitalului „Philantropia“.

D-șale D-lui

Eduard Coni

Arhivist Cl.I. la Arhiva Statului,



Arada 12 Septembrie 41.

RUMANIA

EURO-YU STAMP COLLECTING

1882. Small envelope franked with two copies of 1½b black of 1879 'colours changed', Perf. 11½ (SG 124), both with perforation error (left stamp with bottom corner missing), tied by BARLAD 6/APR/82 c.d.s., paying local printed matter rate. Unusual and scarce.

