



David Feldman
INTERNATIONAL AUCTIONEERS

210898

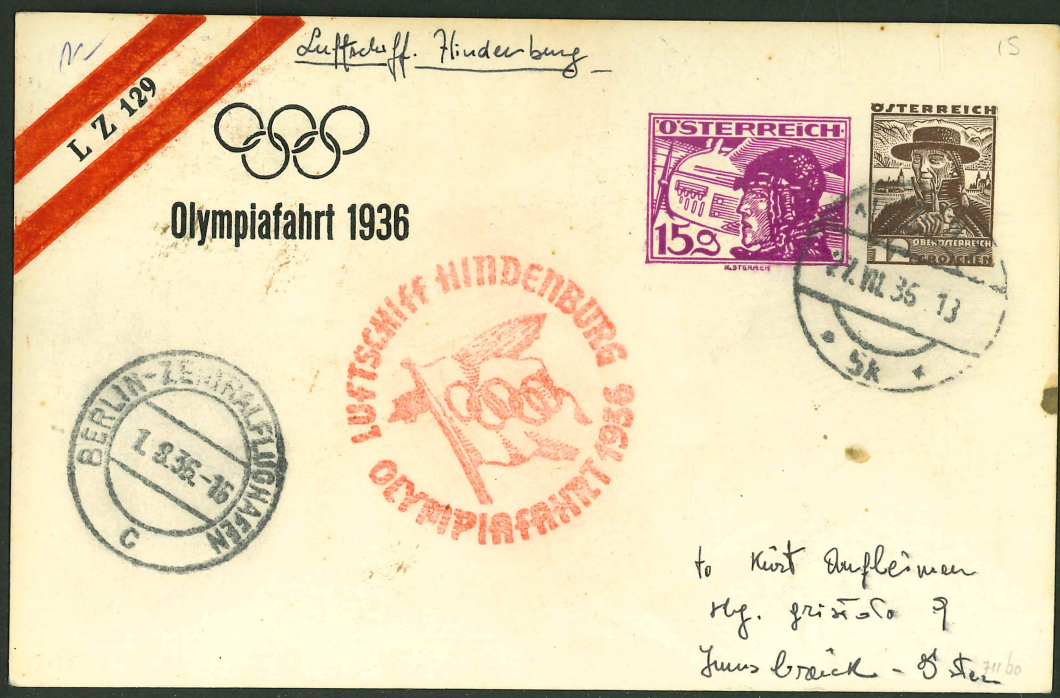
Lot 51210

210898 243 - June 26th-29th: GB & En
1936 Hindenburg Olympic Flight



Price

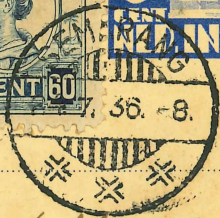
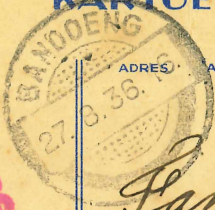
Buyer



Mit Luftschiff Hindenburg

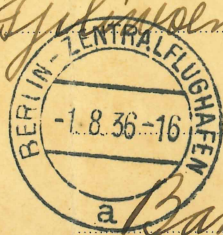


BRIEFKAART
KARTOEPOS



Familie
P. H. Wetters

Giljingsstraat 27



te
a. Bandoeng Java

NAAM EN ADRES VAN DEN AFZENDER
NAMA DAN ALAMAT SIPENGIRIM

J. J. Schmitt, Peterong
W. P. Samarang (Java)

Olympiatocht
Luftschiff Hindenburg



den Wew. Hrn. M. B. de Jonge

hoek Academieplein

Groningen.

R. B. DE JONGE
HOEK ACADEMIEPLEIN
GRONINGEN
TELEPHOON 2913
POSTGIRO 194382

PER LUCHTPOST
PAR AVION AV5

Mit Luftschiff Hindenburg



Herrn W. H. Heineken

Gjember

Java

Niederlandisch ostindien



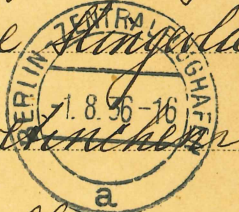
Olympiatocht Luftschiff
"Hindenburg" BRIEFKA



Den heer J. v. d. Stigchel

Huize Slingervliet

Doetinchem



Holland

Afzender J. v. d. Stigchel
adres
Huize Slingervliet
Doetinchem

"Mit Luftschiff HINDENBURG"

Herrn

Claus Brückmann,
Ond. Montaja,

Tjimahi / Java

N.O.I.



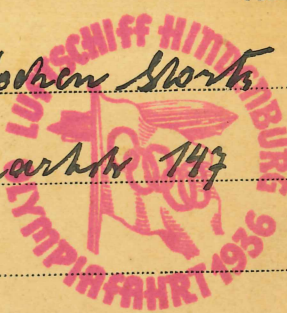
Angesprochen

Aan

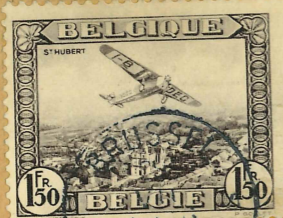
Herrn Johann Stark

Bismarck 147

Stuttgart - Vorhingen



PAR AVION
PER Vliegtuig



Herrn

Otto Mensch

~~XXXXXXXXXXXXXXXXXXXX~~

*Maurice Deboer
Erai de Suly
Taux - Belgique*

Mit Luftschiff Hindenburg Frankfurt-Berlin

ABSENDER:



DORF TRIESENBERG / VILAGO TRIESENBERG

CARTE POSTALE
Postkarte
POSTKARTEN
FRANKFURT
POSTKARTEN
RHEIN-MAIN



Mit Luftschiff Hindenburg.

Herrn

Wilhelm Fehr,

-1.8.36-16

Silum - Triesenberg

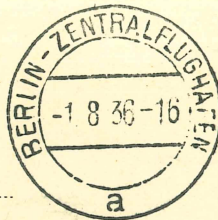
Liechtenstein



Mit Luftschiff
HINDENBURG

POSTKARTE

Mit Luftpost
Par avion
Con aeroplano



Herrn

Herrmann Kreis,

SCHOENENWERD .

Schweiz.



1936 BERLIM / ALEMANHA | BERLIN / GERMANY



Envelope registrado com etiqueta "R Berlin / Olympische Dorf / 616 a" com os oito selos olímpicos, com o carimbo manual "BERLIN OLYMPISCHE DORF / XI OLYMPIADE 1936 / q", o carimbo "Flug-und Luftschiffen / FRANKFURT (MAIN) / RHEIN - MAIN" e o cachet em vermelho "DEUTSCHE LUFTPOST / EUROPA-NORDAMERIKA", enviado para New York pelo voo do dirigível Hindenburg de Frankfurt para Lakehurst, USA, do dia 5 de agosto de 1936. Carimbo de recepção do dia 8 de agosto de 1936. O voo durou 75 hrs e 56 min.

Registered cover with label "R Berlin / Olympische Dorf / 616 a" with the eight Olympic stamps tied by the " BERLIN OLYMPISCHE DORF / XI OLYMPIADE 1936/ q", and the "Flug-und Luftschiffen / FRANKFURT (MAIN) RHEIN-MAIN" manual cancellations and the red cachet "DEUTSCHE LUFTPOST / EUROPA-NORDAMERIKA" sent to New York by the Hindenburg zeppelin flight from Frankfurt to Lakehurst, USA, on 5th August, 1936. Arrival cancellation on August 8th, 1936. The flight lasted 75 hs and 56 min.

1936 BERLIM / ALEMANHA | BERLIN / GERMANY



No dia de abertura dos Jogos de Berlim, o dirigível " LZ 129 Hindenburg " fez um voo olímpico, iniciado no aeroporto de FrankfurtRhein-Mein. A aeronave voou sobre o Estádio Olímpico durante a Cerimônia de Abertura mas não pousou em Berlim. Sacos com correspondência foram jogados no aeroporto de Berlim Tempelhof e o dirigível retornou a Frankfurt com seus 54 oficiais e 64 passageiros. Nesse voo, 61.369 cartas e 57.710 cartões postais, 15 kgs de correspondência recebida a bordo foram transportados.

On the opening day of the Berlim Games the airship " LZ 129 Hindenburg " made an Olympic flight starting from Frankfurt Rhein-Main airport. The airship flew over the Olympic stadium during the Opening Ceremonies but did not land in Berlin. Mail sacks were thrown out at Berlin Tempelhof airport and the airship returned to Frankfurt with its 54 official staff and 64 passengers. On this flight 61.369 letters and 57.710 postcards, as well as 15 kg of onboard mail were carried.

Inteiro postal olímpico com selos adicionais com o carimbo " Frankfurt / Rhein-Main / 1.8.36 " e o cachet magenta do voo olímpico do Zeppelin, com o carimbo " Berlin Zentralflughafen / 1.8.36.

Postal stationery with additional stamps tied by " Frankfurt / Rhein-Main / 1.8.36 " postmark and the magenta Zeppelin Olympic flight cachet, with " Berlin Zentralflughafen / 1.8.36 " postmark.



Envelope registrado com etiqueta "R Berlin / Olympische Dorf / 957 c" com os oito selos Olímpicos, com o carimbo manual "BERLIN OLYMPISCHE DORF / XI OLYMPIADE 1936 / e", o carimbo "Flug-und Luftschiffen / FRANKFURT (MAIN) / RHEIN - MAIN" e o cachet em vermelho "DEUTSCHE LUFTPOST / EUROPA-NORDAMERIKA", enviado para Munique pelo voo do dirigível Hindenburg de Frankfurt para Lakehurst, USA, do dia 16 de agosto de 1936, dia da Cerimônia de Encerramento dos Jogos Olímpicos. Carimbo de recepção do dia 19 de agosto de 1936. No dia 20, o envelope foi reenviado para a Alemanha, chegando a Munique no dia 28 de agosto de 1936.

Registered cover with label "R Berlin / Olympische Dorf / 957 c" with the eight Olympic stamps tied by the "BERLIN OLYMPISCHE DORF / XI OLYMPIADE 1936 / e", and the "Flug-und Luftschiffen / FRANKFURT (MAIN) RHEIN-MAIN" manual cancellations and the red cachet "DEUTSCHE LUFTPOST / EUROPA-NORDAMERIKA", sent to Munich by the Hindenburg zeppelin flight from Frankfurt to Lakehurst, USA, on 16th August, 1936, day of the Closing Ceremony of the Olympic Games. Arrival cancellation on August 19th, 1936. On the 20th, the cover was resent to Germany, arriving in Munich on August 28th, 1936.

1936 BERLIM / ALEMANHA | BERLIN / GERMANY



Inteiro postal dos Jogos Olímpicos de Berlim de 1936, em marrom, valor 6 + 4 fs.

1936 Berlin Olympic Games postal stationery in brown, value 6 + 4 pfs.

1936 BERLIM / ALEMANHA | BERLIN / GERMANY



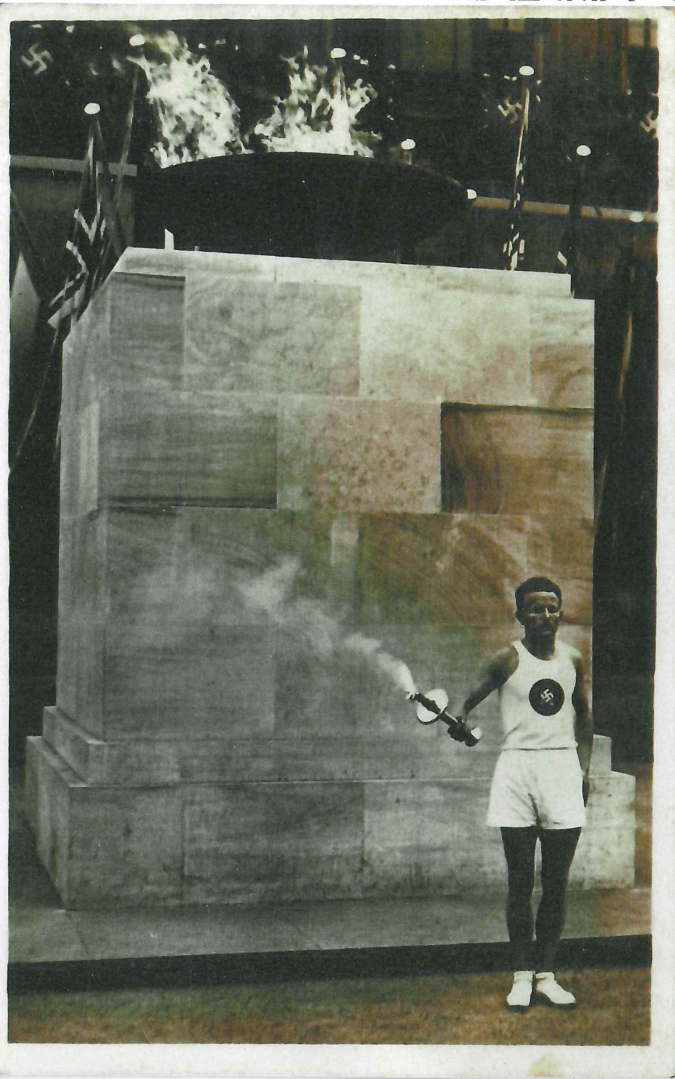
Inteiro postal dos Jogos Olímpicos de Berlim de 1936, em violeta, valor 15 + 10 fs.

1936 Berlin Olympic Games postal stationery in violet, value 15 + 10 pfs.

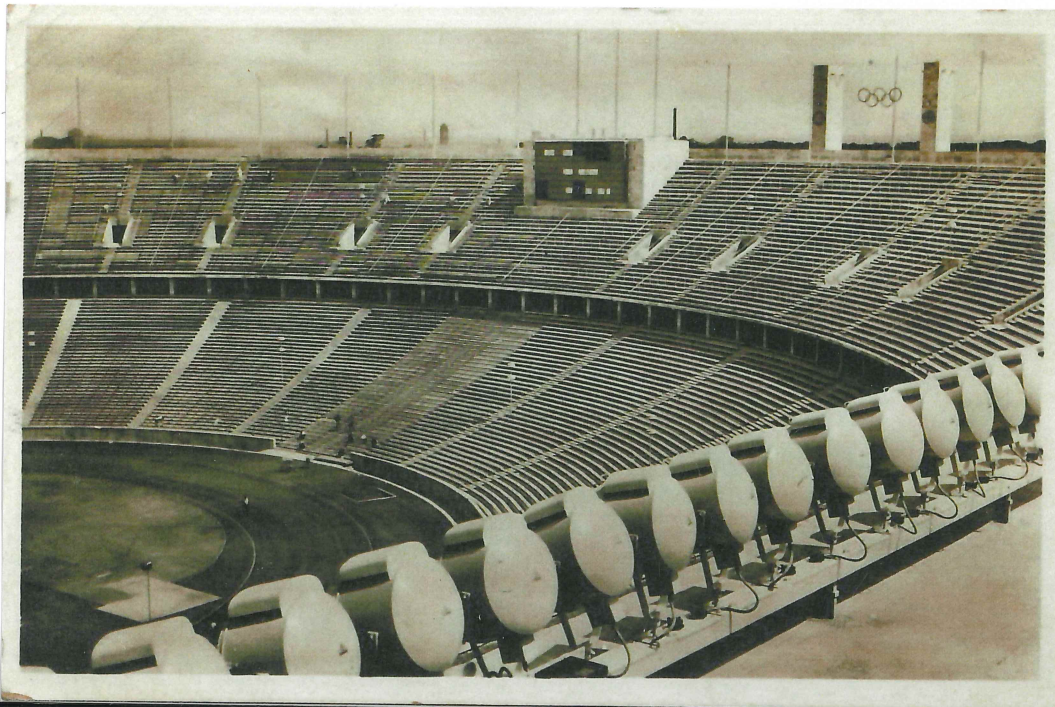


GALERIA OLÍMPICA

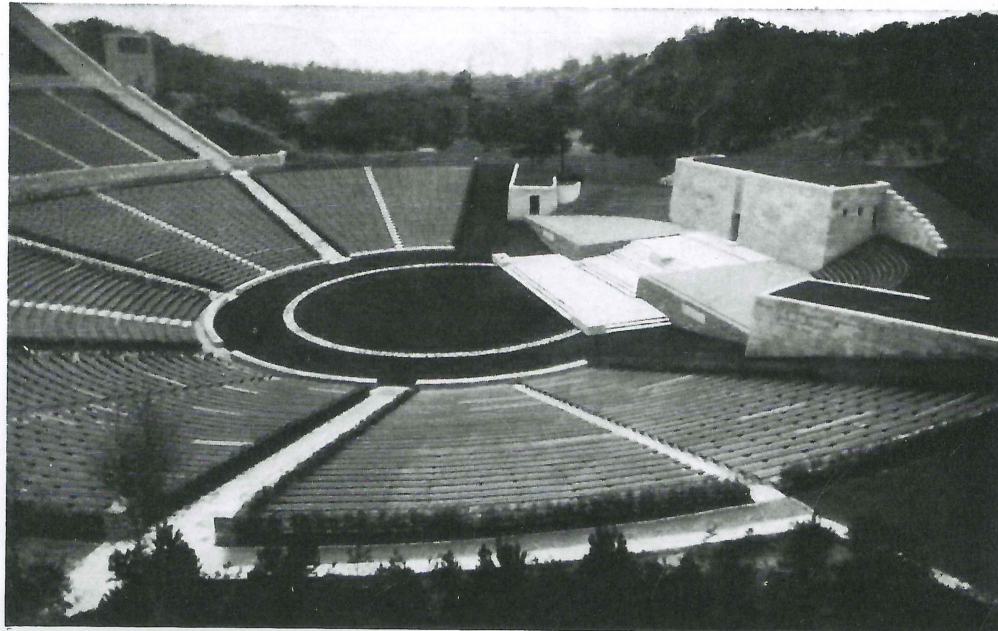
1936 BERLIM / ALEMANHA | BERLIN / GERMANY



1936 BERLIM / ALEMANHA | BERLIN / GERMANY



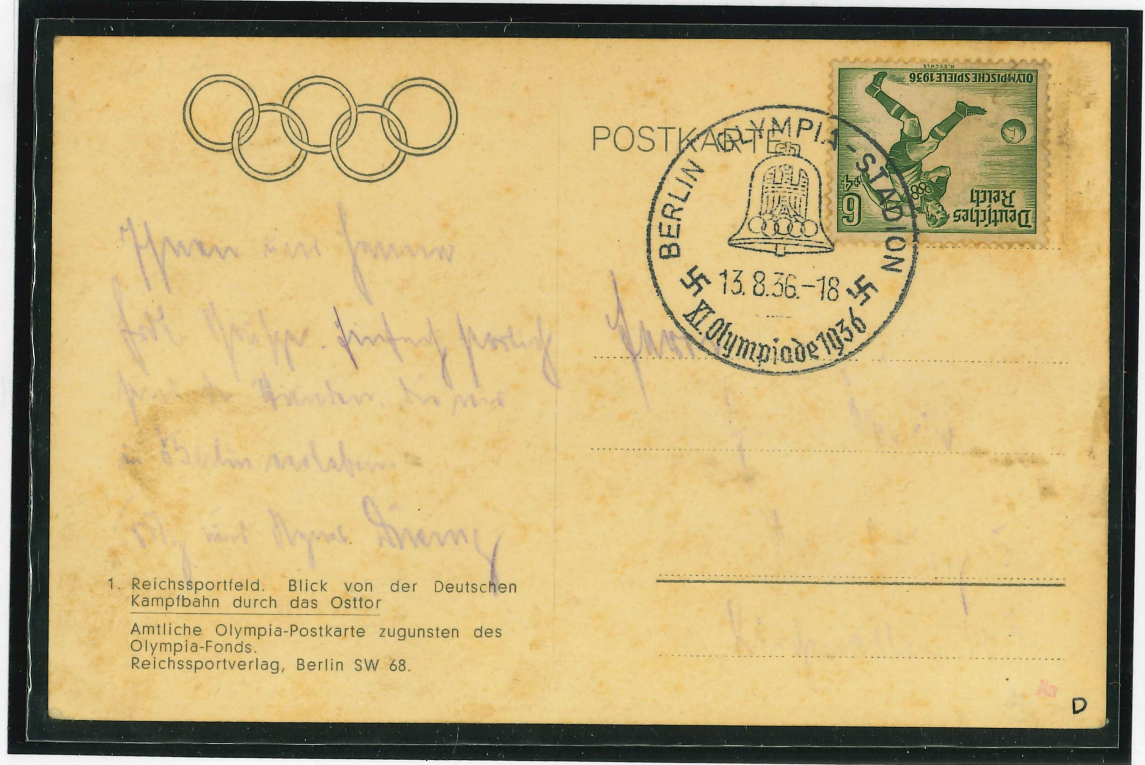
1936 BERLIM / ALEMANHA | BERLIN / GERMANY





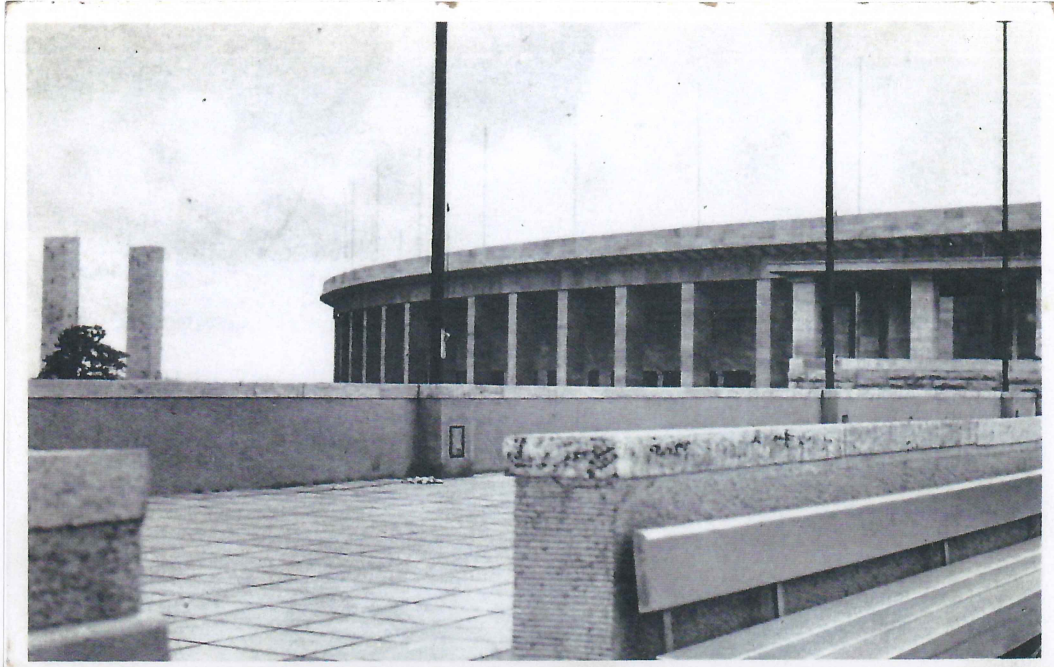
GALERIA OLÍMPICA

1936 BERLIM / ALEMANHA | BERLIN / GERMANY



1. Reichssportfeld. Blick von der Deutschen Kampfbahn durch das Osttor
Amtliche Olympia-Postkarte zugunsten des Olympia-Fonds.
Reichssportverlag, Berlin SW 68.

1936 BERLIM / ALEMANHA | BERLIN / GERMANY





Reichssportfeld, Olympia-Stadion
 Amtliche Olympia-Postkarte
 Reichsdruckverlag, Berlin SW 68

POSTKARTE




Loren

J. Gießel

Notenburg

Leipzig 30

1936 BERLIM / ALEMANHA | BERLIN / GERMANY



Liebe Klara!
 Heute habe ich die
 besten von allen
 Bildern der Reichssportfeld
 bekommen. Ich habe
 sie dir geschickt.
 Ich hoffe, sie
 gefallen dir.
 Dein
 Otto

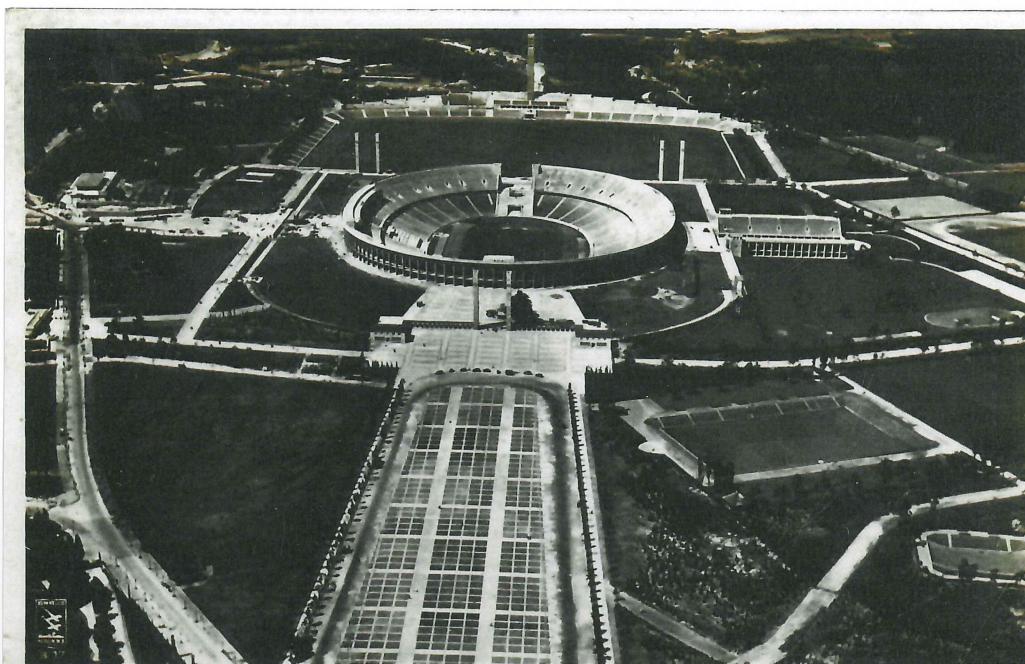


Frau Klara Hanke
 70 Wenn Otto Lade
 Hamburg
 Bäckerstraße 4 pt.

Echte Photographie.
 Aufnahme 1935 der Hand-Luftbild GmbH.
 Freigegeben am 7.7.36 in der Prüfstelle
 für Luftbilder im R.L.M.

W. St. B. Nr. 120
Berlin 8/7/36

1936 BERLIM / ALEMANHA | BERLIN / GERMANY



Nr. 10. Gesamtanzahl Reichsportfeld
 Amtliche Olympia-Postkarte zugunsten des Olympia-
 Fonds. — Reichssportverlag, Berlin SW 68

Industriephotografen Klinke & Co., Berlin W 8, Leipziger Str. 24
 Negativ Nr. 43 769 geprüft und freigegeben. Bildstelle R. L. M.

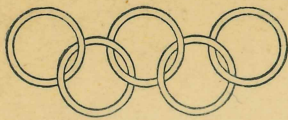
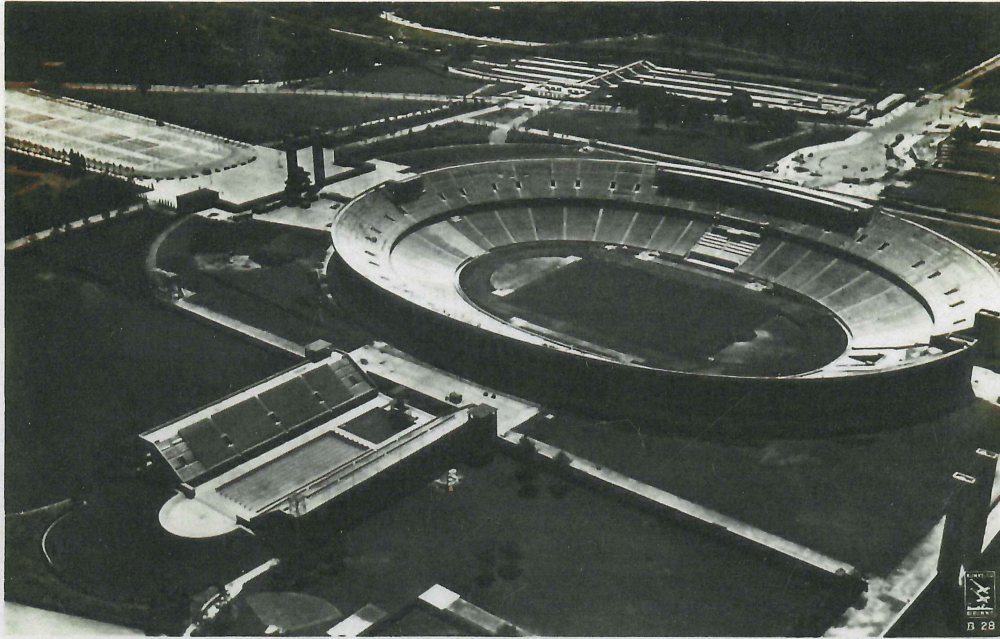

 Ich bin sehr stolz in Bezug
 auf den Reichssportfeld
 und habe mich sehr bemüht
 diesen Sportplatz zu
 erhalten. Ich habe mich
 sehr bemüht, diesen
 Sportplatz zu erhalten
 und habe mich sehr
 bemüht, diesen Sportplatz
 zu erhalten. Ich habe mich
 sehr bemüht, diesen
 Sportplatz zu erhalten
 und habe mich sehr
 bemüht, diesen Sportplatz
 zu erhalten.

Berlin, den 1. Aug. 36
 Hans Wagner

Schweiz.
 Bern
 Hans Wagner & Familie
 v. Altes Châlet Elisabeth
 Hünen
 Grenchen - Oberland




1936 BERLIM / ALEMANHA | BERLIN / GERMANY



Industrie-Fotografen Klink & Co., Berlin W 8, Leipziger Str. 24
Negativ Nr. 43 776 geprüft und freigegeben. Bildstelle R. L. M.



Nr. 13. Reichssportfeld, Olympia-Stadion
Amtliche Olympia-Postkarte zugunsten des Olympia-
Fonds. — Reichssportverlag, Berlin SW 68

1936 BERLIM / ALEMANHA | BERLIN / GERMANY



No dia de abertura dos Jogos de Berlim, o dirigível " LZ 129 Hindenburg " fez um voo olímpico, iniciado no aeroporto de FrankfurtRhein-Mein. A aeronave voou sobre o Estádio Olímpico durante a Cerimônia de Abertura mas não pousou em Berlim. Sacos com correspondência foram jogados no aeroporto de Berlim Tempelhof e o dirigível retornou a Frankfurt com seus 54 oficiais e 64 passageiros. Nesse voo, 61.369 cartas e 57.710 cartões postais, 15 kgs de correspondência recebida a bordo foram transportados.

On the opening day of the Berlin Games the airship " LZ 129 Hindenburg " made an Olympic flight starting from Frankfurt Rhein-Main airport. The airship flew over the Olympic stadium during the Opening Ceremonies but did not land in Berlin. Mail sacks were thrown out at Berlin Tempelhof airport and the airship returned to Frankfurt with its 54 official staff and 64 passengers. On this flight 61.369 letters and 57.710 postcards, as well as 15 kg of onboard mail were carried.

Inteiro postal olímpico com selos adicionais com o carimbo " Frankfurt / Rhein-Main / 1.8.36 " e o cachet magenta do voo olímpico do Zeppelin, com o carimbo " Berlin Zentralflughafen / 1.8.36.

Postal stationery with additional stamps tied by " Frankfurt / Rhein-Main / 1.8.36 " postmark and the magenta Zeppelin Olympic flight cachet, with " Berlin Zentralflughafen / 1.8.36 " postmark.

1936 BERLIM / ALEMANHA | BERLIN / GERMANY



No dia de abertura dos Jogos de Berlim, o dirigível " LZ 129 Hindenburg " fez um voo olímpico, iniciado no aeroporto de FrankfurtRhein-Mein. A aeronave voou sobre o Estádio Olímpico durante a Cerimônia de Abertura mas não pousou em Berlim. Sacos com correspondência foram jogados no aeroporto de Berlim Tempelhof e o dirigível retornou a Frankfurt com seus 54 oficiais e 64 passageiros. Nesse voo, 61.369 cartas e 57.710 cartões postais, 15 kgs de correspondência recebida a bordo foram transportados.

On the opening day of the Berlim Games the airship " LZ 129 Hindenburg " made an Olympic flight starting from Frankfurt Rhein-Main airport. The airship flew over the Olympic stadium during the Opening Ceremonies but did not land in Berlin. Mail sacks were thrown out at Berlin Tempelhof airport and the airship returned to Frankfurt with its 54 official staff and 64 passengers. On this flight 61.369 letters and 57.710 postcards, as well as 15 kg of onboard mail were carried.

Cartão postal de Hermann Göring, Ministro da Aeronáutica, com 3 selos olímpicos com o carimbo " Frankfurt / Rhein-Main / 1.8.36 ", o cachet magenta do voo olímpico do Zeppelin e o carimbo " Berlin Zentralflughafen / 1.8.36 ".

Hermann Göring postcard with 3 Olympic stamps tied by " Frankfurt / Rhein-Main / 1.8.36 " postmark, the magenta Zeppelin Olympic flight cachet, with " Berlin Zentralflughafen / 1.8.36 " postmark.

1936 BERLIM / ALEMANHA | BERLIN / GERMANY

CERIMÔNIA DE ABERTURA DOS JOGOS OLÍMPICOS
OLYMPIC GAMES OPENING CEREMONY



Como Chefe de Estado,
Adolf Hitler abriu
formalmente
os Jogos da Décima
Primeira Olimpíada

As Head of State, Adolf
Hitler formally
opened the Games of
the Eleventh Olympiad



A Cerimônia de Abertura ocorreu no Estádio Olímpico às
16:00 horas do dia 1o. de agosto de 1936

The Opening Ceremony took place in the main Olympic
Stadium at 16:00 hs on August, 1st, 1936

1936 BERLIM / ALEMANHA | BERLIN / GERMANY



No dia de abertura dos Jogos de Berlim, o dirigível " LZ 129 Hindenburg " fez um voo olímpico, iniciado no aeroporto de FrankfurtRhein-Mein. A aeronave voou sobre o Estádio Olímpico durante a Cerimônia de Abertura mas não pousou em Berlim. Sacos com correspondência foram jogados no aeroporto de Berlim Tempelhof e o dirigível retornou a Frankfurt com seus 54 oficiais e 64 passageiros. Nesse voo, 61.369 cartas e 57.710 cartões postais, 15 kgs de correspondência recebida a bordo foram transportados.

On the opening day of the Berlim Games the airship " LZ 129 Hindenburg " made an Olympic flight starting from Frankfurt Rhein-Main airport. The airship flew over the Olympic stadium during the Opening Ceremonies but did not land in Berlin. Mail sacks were thrown out at Berlin Tempelhof airport and the airship returned to Frankfurt with its 54 official staff and 64 passengers. On this flight 61.369 letters and 57.710 postcards, as well as 15 kg of onboard mail were carried.

Envelope com a série completa dos selos olímpicos com o carimbo " Frankfurt / Rhein-Main / 1.8.36 " e o cachet LARANJA do voo olímpico do Zeppelin, com o carimbo " Berlin Zentralflughafen / 1.8.36 no verso.

Cover with complete set of Olympic stamps tied by " Frankfurt / Rhein-Main / 1.8.36 " postmark and the ORANGE Zeppelin Olympic flight cachet, with " Berlin Zentralflughafen / 1.8.36 " postmark on the back of the cover.