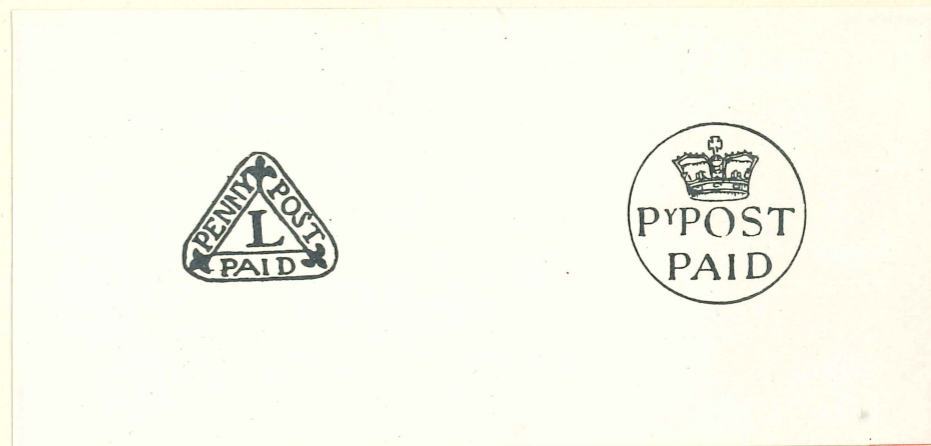
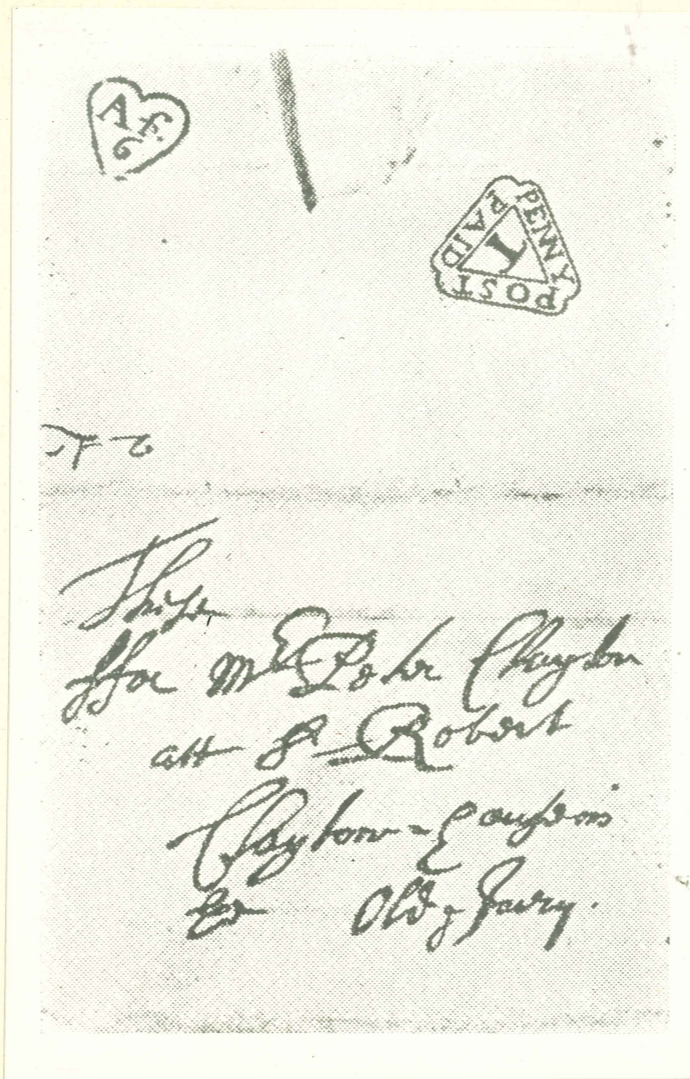




AVEC LES COMPLIMENTS DE
L'ADMINISTRATION DES POSTES
DU ROYAUME-UNI DE LA GRANDE
BRETAGNE ET DE L'IRLANDE
DU NORD A L'OCCASION
DU XII^e CONGRES POSTAL
UNIVERSEL A PARIS, 1947

Henry Bishop, Postmaster General, writing on the 2nd August, 1661, in reply to charges of delay in the post stated that "A stamp is invented that is put upon every letter"; but the stamp in question was a date-stamp showing the date of posting. Handstruck stamps on letters denoting prepayment of postage have been in use in Great Britain since about 1680. The first adhesive stamps to be issued for this purpose were the Queen Victoria "penny black" stamps which were placed on sale to the public for the first time on 6th May, 1840—just 107 years ago. Their use was an essential part of the postal reform of Sir Rowland Hill. His original intention was that, in order to foster prepayment of postage, special covers or envelopes, bearing a design by Sir William Mulready, Royal Academician, should be sold to enclose letters. The use of labels, as stamps were then called, was intended merely to obviate the difficulty where a letter might be presented at a Post Office unenclosed in a "Mulready" envelope or might be redirected, fresh postage being payable. The public, however, showed a decided preference for the labels and "stamps" were adopted generally for postal use. The practice quickly spread to other countries. Some 7,000,000,000 stamps are now printed annually for the British Post Office.



1680

1794

PENNY STAMPS

Handstruck postmarks denoting prepayment of postage on letters sent by post in London in 1680 and 1794. These were in effect penny stamps.



SIR ROWLAND HILL,
K.C.B., D.C.L., F.R.S., F.R.A.S.

*Celebrated postal reformer
responsible for the introduction
of uniform postage rates and the
use of adhesive stamps.*

*Born at Kidderminster, 3 Dec., 1795.
Died, 27 Aug., 1879.*

*“ But so long as men keep warm feelings,
and the name of home has still its charm ;
so long as there are sorrowful partings and
hearts that need comforting ; so long as our
high aim is towards peace on earth, good
will toward men, Rowland Hill is not likely
to be forgotten. For he has done almost
more than any other man to bring near
those who are far off, to bind the nations
together, and to make the whole world kin.”*

—Life of Sir Rowland Hill—



*Design for the Mulready envelope issued in 1840.
This design was officially adopted, but was severely
ridiculed and the envelopes were soon withdrawn.*



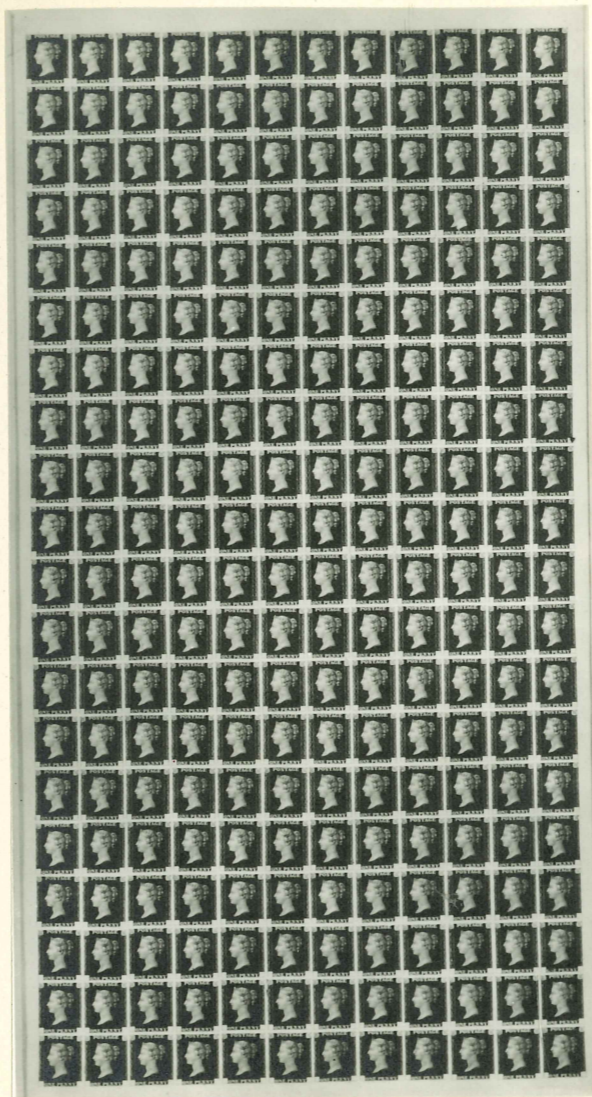
*The "Wyon" medal
from which the Queen's
head was copied for
the first postage stamp
of 1840.*





Photograph of the line engraved die prepared for production of the first stamps. Impressions of the die were transferred by means of a steel roller to the plates from which the stamps were printed.





*Proof sheet of the first
(penny) stamps
April, 1840.*



*Check letters to facilitate
the detection of forgeries
were inserted later at
the two bottom corners
of each stamp.*



CURRENT BRITISH POSTAGE STAMPS



MAY, 1947

COMMEMORATIVE STAMPS

Centenary of the adhesive postage stamp



First day of issue

6th MAY, 1940

COMMEMORATIVE STAMPS

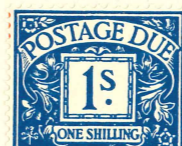
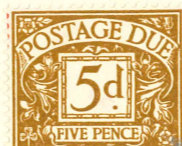
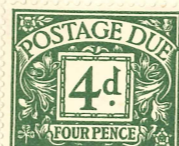
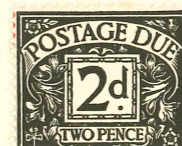
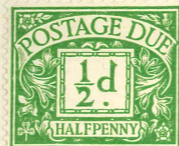
Peace and reconstruction



First day of issue

11th JUNE, 1946

POSTAGE DUE LABELS



TANGIER AGENCY STAMPS

Overprinted



Peace Commemorative



MOROCCO AGENCIES STAMPS

Overprinted—Spanish Currency



STAMPED STATIONERY



Stamped Postcard (Single)

STAMPED STATIONERY



Stamped Postcard (Reply Paid)

STAMPED STATIONERY



Letter Card

STAMPED STATIONERY



Stamped Envelope
"A" size

STAMPED STATIONERY



*Stamped Envelope
"Commercial" Size*

STAMPED STATIONERY



Air Letter

STAMPED STATIONERY

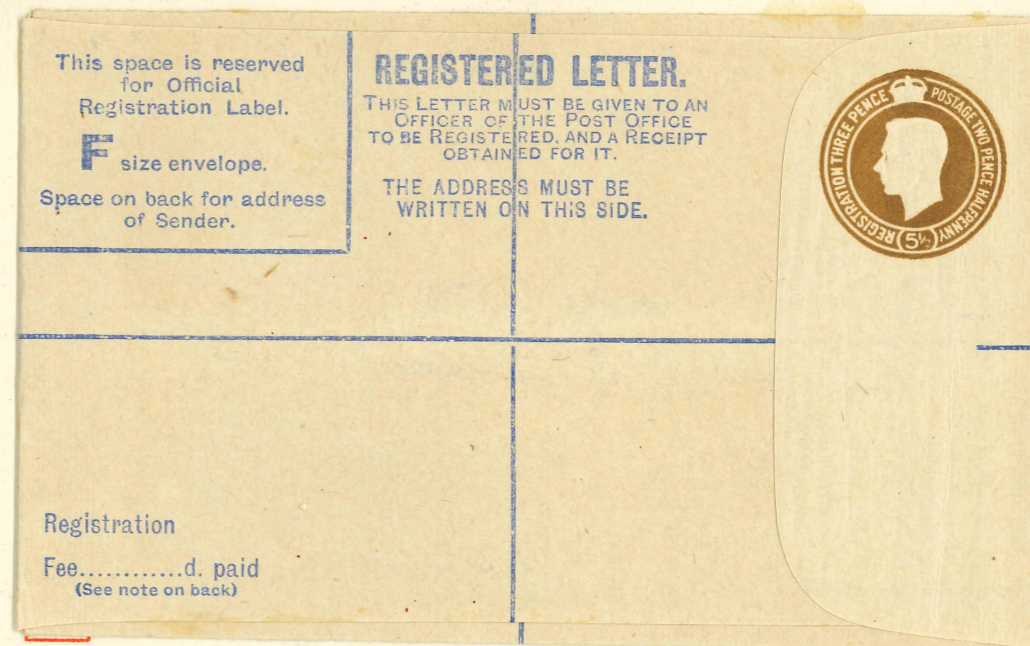
**FORCES
LETTER**

Not suitable
for enclosures



Forces Letter

STAMPED STATIONERY



Registered Letter Envelope