



Great Britain

Geneva - Wednesday October 4th, 2023 at 15:00 CEST

Great Britain

Geneva - Wednesday October 4th, 2023 at 15:00 CEST



David Feldman
INTERNATIONAL AUCTIONEERS

© 2023 David Feldman SA
All rights reserved

All content of this catalogue, such as text, images and their arrangement, is the property of David Feldman SA, and is protected by international copyright laws.

The objects displayed in this catalogue are shown with the express permission of their owners.

Printed in the UK by Pardy & Son Printers Ltd.

Colour and size disclaimer. We strive to present the lots in this catalogue as accurately as possible. Nevertheless, due to limitations of digital scanners, digital photography, and unintentional variations on the offset printing presses, we cannot guarantee that the colours you see printed are an exact reproduction of the actual item. Although variations are minimal, the images presented herein are intended as a guide only and should not be regarded as absolutely correct. All colours are approximations of actual colours. Images sizes may also be different from the actual sizes of the items.

Auction Agenda

Geneva - October 4th, 2023

Wednesday October 4th, 2023

11:00 CEST	The “Arden” Collection of King Edward VII	Lots 10000 - 10302
15:00 CEST	Great Britain	Lots 10304 - 10626

This catalogue is your personal invitation to participate in the auction.

Ce catalogue fait office d'invitation personnelle pour participer à la vente aux enchères.

Dieser Katalog dient als persönliche Einladung zur Teilnahm.

Auction Bidding Options

There are several ways to bid in our auctions (if you cannot attend in person). Bids can be made by email, telephone, and through our Web site.

Written Bid Form

You are invited to bid before the auction, using the bid forms enclosed with the catalogue.

- Write down the lot numbers of interest to you and your bids on them
- Complete your personal information
- Sign the form on the last page of this catalogue and send it either:
 - by email: info@davidfeldman.com
 - by post: David Feldman SA,
PO Box 29, Chemin du Pavillon 2
1218 Le Grand-Saconnex, Geneva, Switzerland

Bids initially made by telephone must be supported by written confirmation by post prior to the sale.

Phone Bids During the Auction

If you wish to bid by phone, you should confirm in writing 48 hours before the auction indicating the lot numbers you wish to bid on and phone number(s) where you can be reached during the auction. Due to the availability of multiple other bidding options, telephone bidding is accepted at the discretion of David Feldman SA. One of our philatelists will call you a few lots in advance of your first lot of interest, and bid for you directly during the auction.

Online Bidding

Participate in any David Feldman auction from the comfort of your home, office, or while travelling.

New Clients

If you are a new client, please follow these steps to save your pre-auction bids and/or create a live bidding account.

- Select "My Account" on davidfeldman.com and follow the steps to create your personal account
- During the account creation process you will be sent a request to complete a new client registration form, where you will be asked to confirm your contact details and provide credit references and proof of identity.

Pre-Auction Bidding

Once your details have been confirmed, you will then be able to enter any bids in advance of the auction via our web site.

- Log-in to your account
- Browse the auction lots to find those items that interest you
- Enter the maximum amount you want to bid for any lot
- Click the "Bid" button
- Repeat for each desired lot
- Monitor your bids to see if you have been outbid

Live Auction Bidding

You may also bid live in any of our auctions via the Internet. Follow your targeted lots on screen and enter your bids with the confidence that you will be bidding as if you were in the auction room itself.

- Click on the "Live Auction" button on the home page
- Log-in to the auction
- Follow the auction and click the "Bid" button to register your bid with the auction
- Defend your bid(s) as needed

Reminder. These are the instructions for existing clients who have already made auction bids with us using existing credentials. If you are a new client, or an existing client who has not bid via the internet before, please ensure that you create your account **at least 48 hours before the auction** and ensure that you provide us with the information requested during this process without delay.

Great Britain Specialised Auction

Geneva - October 4th, 2023



David Feldman
International Auctioneers

Tel +41 22 727 07 77

info@davidfeldman.com

davidfeldman.com

- The “Arden” Collection of King Edward VII
- Great Britain, including important Queen Victoria Line Engraved and Surface Printed

With us, your precious collections and philatelic gems are in the best hands.



Auction Bidding Agents

Commissionnaires / Kommissionäre

David Feldman SA is pleased to handle your bids, representing you as if you were present in the auction room.

However, if you would like to be represented by a professional bidding agent, we list below a number of persons who regularly bid at our sales on behalf of clients.

David Feldman SA prend soin de vos offres lui parvenant directement et vous représente au mieux de vos intérêts comme si vous étiez dans la salle des ventes.

Dans le cas où vous préféreriez néanmoins passer par un commissionnaire, nous listons ci-après certaines personnes prenant régulièrement part à nos ventes en représentant des acheteurs.

David Feldman SA ist gerne bereit, Ihre Gebote so zu vertreten, als wären Sie selbst im Auktionssaal anwesend.

Wenn Sie jedoch von einem professionellen Bietagenten repräsentiert werden möchten, finden Sie unten eine Liste von Personen, die regelmäßig bei unseren Auktionen im Namen von Kunden mitbieten.

Germany

Jochen Heddergott **Tel** +49 89 272 1683
Mobile +49 151 4040 9090
Email jh@philagent.com

Lorenz Kirchheim **Tel** +49 40 645 32 545
Email lorenz.kirchheim@t-online.de

Great Britain

Trevor Chinery **Tel** +44 7527444825
Auction Agency **Email** trevortrilogy@aol.com
Website philatelic-auction-agent.co.uk

Nick Martin **Mobile** +44 770 376 6477
Email nick@martinlincs.uk
Website loveauctions.co.uk

Italy

Giacomo Bottacchi **Tel** +39 02 718 023
Mobile +39 339 730 9312
Email gbstamps@iol.it

USA

Charles E. Cwiakala **Tel** +1 847 823 8747
Email cecwiakala@aol.com

Purser & Associates **Tel** +1 857 928 5140
Email info@pursers.com

Frank Mandel **Tel** +1 212 675 0819
Mobile +1 718 873 5702



David Feldman
INTERNATIONAL AUCTIONEERS



We strive for excellence

and we go the extra mile for our consignors

Contact us to discuss your consignment
to our auctions at info@davidfeldman.com



Payment Instructions

Instructions de Paiement / Zahlungsanweisungen

Bank Transfer / Transfert Bancaire / Banküberweisung

Credit Suisse - 8 Paradeplatz, Zürich 8070, Switzerland

Swiss Francs (CHF)

Account 0316-398878-81
IBAN CH02 0483 5039 8878 8100 0
Swift / BIC CRESCHZZ80A
Beneficiary David Feldman SA

US Dollars (USD)

Account 0316-398878-82
Iban CH65 0483 5039 8878 8200 0
Swift / BIC CRESCHZZ80A
Beneficiary David Feldman SA

Euros (EUR)

Account 0316-398878-82-3
IBAN CH81 0483 5039 8878 8200 3
Swift / BIC CRESCHZZ80A
Beneficiary David Feldman SA

British Pounds (GBP)

Account 0316-398878-82-4
Iban CH54 0483 5039 8878 8200 4
Swift / BIC CRESCHZZ80A
Beneficiary David Feldman SA

Post Office / Poste / Post

Euros (EUR)

Account 91-285892-6
Iban CH04 0900 0000 9128 5892 6
Swift / BIC POFICHBEXXX
Beneficiary David Feldman SA

Swiss Francs (CHF)

Account 12-4880-0
Iban CH27 0900 0000 1200 4880 0
Swift / BIC POFICHBEXXX
Beneficiary David Feldman SA

Cheque / Chèque / Scheck

If you wish to pay by cheque, please contact our accounts department: accounts@davidfeldman.com or +41 22 727 07 77.

Credit card / Carte de crédit / Kreditkarte

Accepted credit cards

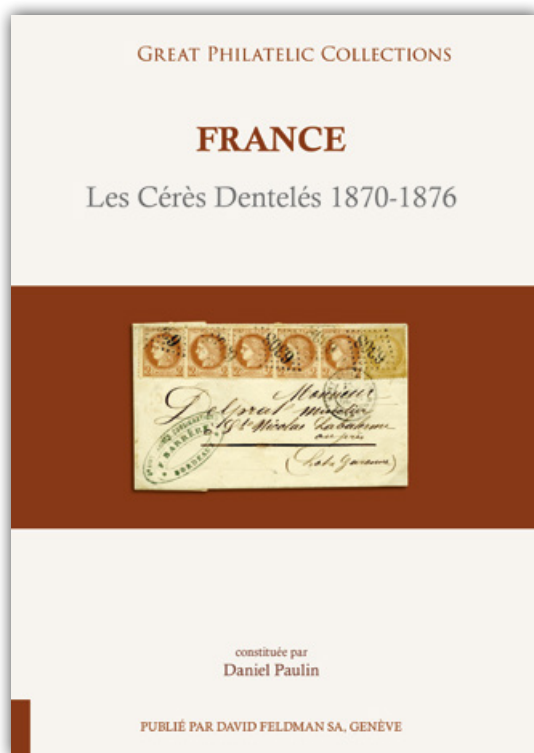
For invoices of less than CHF / EUR / USD / GBP 2'000

- Visa
- MasterCard
- American Express (charges made in CHF only)

Late payment: 2% monthly recovery fee will be charged on overdue accounts / Retard de paiement: 2% de frais de recouvrement par mois seront débités de votre compte
/ Zahlungsverzug: 2% Zusatzgebühr, pro Monat, werden Ihrem Konto belastet

Great Philatelic Collections

Award-winning philatelic treasures for every philatelic bookshelf.
Thirty-three titles published so far, and many more to come.



In addition to being a valued keepsake for collectors and their families, the “Great Philatelic Collections” series of limited editions represent a “must have” for every enthusiast collecting any of the subjects comprised in the series. Deluxe hardbound numbered limited editions.

Consult the published titles at
davidfeldman.com/dfs-a-shop



David Feldman
International Auctioneers

Tel +41 22 727 07 77

info@davidfeldman.com

davidfeldman.com



Viewing in London: Stampex Exhibition

September 27th-30th, 2023

Business Design Centre

52 Upper Street
London, N1 0QH

Stands 90-91



David Feldman
International Auctioneers

Tel +41 22 727 07 77

info@davidfeldman.com

davidfeldman.com

Contact us today to make
an appointment by phone or email



Introduction

Dear Collector and Client,

It gives us great pleasure to present over 320 lots of Great Britain in this catalogue, alongside the specialised catalogue of the “Arden” collection of King Edward VII essays and proofs.

This catalogue features several highly important Mulready items for the connoisseur, including not one but two pre-May 6th usages and a stunning duo with the famous Wotton-under-Edge distinctive Maltese Cross. The sale continues with a strong section of Penny Blacks and Penny Reds from the black plates, including proofs, matched pairs, inverted watermarks, re-entries and constant varieties, cancellation interest and two Penny Black mint marginal pairs. The Surface Printed section features an attractive selection of the 1887 “Jubilee” issue with essays and proofs including the extraordinary sets of composite essays for the 1900 1s. The “Kings” period encompasses proofs, colour trials and specimens, and Queen Elizabeth contains imprimaturs and modern errors. The sale concludes with the back-of-the-book issues and collections, with the Officials including one of the stand-out pieces of the sale; the I.R. Official KEVII £1 marginal mint block of four. And the Telegraphs features one of the more fascinating items; the De La Rue archive page with proofs of the values to £5, which has annotations to change the colour of the £5 from blue to vermilion!

Please note that we will have a viewing of all the lots at our stand (90-91) at Stampex at the Business Design Centre in Islington, London, on September 27th-30th. Our specialists Guy Croton, Ricky Verra and Tony Banwell look forward to seeing you there.

Finally, we'd like to thank all our vendors for showing their faith in us to present their items and collections in the best way possible to maximise the potential of their lifetimes' work through our skills in lotting, describing and estimating to produce a catalogue worthy of displaying their philatelic treasures in their best possible light.

Geneva, October 2023



Great Britain



Great Britain	10304 - 10626
1840 Mulreadys & Caricatures	10304 - 10313
Postal Stationery	10314
Line Engraved Essays, Plate Proofs, Colour Trials and Reprints	10315 - 10327
1840 1d Black and 1d Red plates 1a to 11	10328 - 10397
1840 2d Blue (ordered by plate number)	10398 - 10404
1841 1d Red	10405 - 10406
1841 2d Blue	10407
1854-70 Perforated Line Engraved	10408 - 10415
1855-1900 Surface Printed	10416 - 10493
King Edward VII	10494 - 10518
King George V	10519 - 10553
King George VI	10554 - 10561
Queen Elizabeth II	10562 - 10593
Regionals - Scotland	10594
Officials	10595 - 10602
Postage Dues	10603 - 10610
Telegraphs	10611 - 10615
Collections	10616 - 10626

Great Britain

1840 Mulreadys & Caricatures

A stunning turned Mulready used on the 1st and 2nd of May



10304



100'000 - 120'000

1840 (May 1) 1d Mulready lettersheet (A27) turned inside out and used on the 1st May 1840 to Derby, showing a fine strike of the red Tombstone **"Paid 1 My 1840"** then turned the right way and re-used locally on the **2nd May 1840** showing a good strike of the "Derby MY 2 1840" at lower left and rated "2" in manuscript. A fabulous pre First day usage (5 days before) and **believed to be the only known example**, a major rarity of the highest calibre; cert. BPA (1998).

One of the finest known examples of this early usage



10305



50'000 - 60'000

1840 (May 2) 1d Mulready letter sheet (A175) used locally in London to Clapham Rise, beautifully cancelled by a superb strike of red London Octagonal date stamp **for the 2nd May (four days prior to the official first day of use)**, also showing a light strike of "Strand / 1d. paid" receiving office handstamp in black and endorsed "P1" in manuscript at lower left, an incredible exhibition showpiece unrivalled with such a perfect display of the date stamp at front, one of, if not the finest known example of this early usage; photocopy of cert. BPA (1998).

10306



200 - 300

1840 (May 11) 1d Mulready envelope, stereo A189, sent from Silsoe (Bedfordshire) to London, cancelled by a fine upright red Maltese Cross, with Silsoe udc in red on the reverse along with a London 11 MY 1840 arrival alongside, highly likely to have been sent the day before which is a Sunday (S.G. £16,000), wax seal removed and two vertical creases to sides, otherwise fine and scarce provisional May date use (S.G. £2'200).



10306



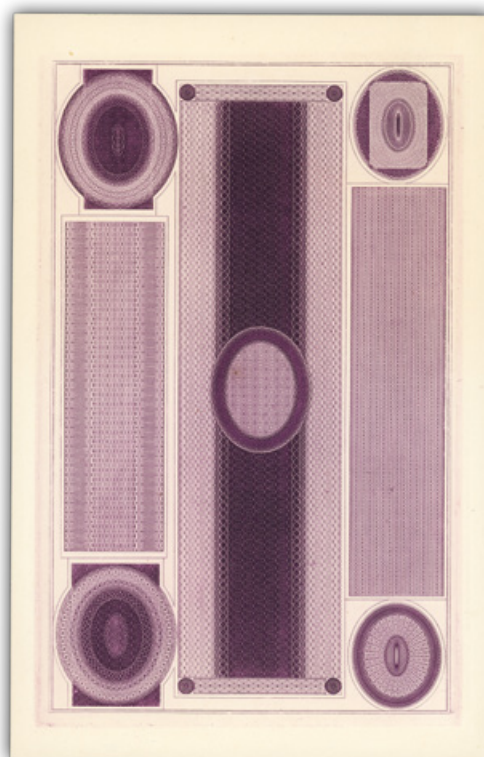
10312



10314



10530



10319



10405



10410



10307



8'000 - 10'000

1840 (Jul 4) 1d Mulready advertising letter sheet, A71, to Glasgow, additionally bearing 1840 1d black pl.4 SJ, with margins all round, both neatly cancelled by red Maltese cross, the address panel additionally signed by Sir Robert Peel (Prime Minister of the United Kingdom 1834-35 and again in 1841-46), a very fine and rare uprated usage; cert. BPA (1972).



10308



45'000 - 55'000

1841 (Feb 12) 1d Mulready letter sheet (A81) from Dublin to Edinburgh, neatly cancelled by a good strike of the red Maltese cross, the front showing a perfectly struck framed "MORE TO PAY" and manuscript "2" over "1 Oz" then additionally franked by an 1840 1d. black horizontal pair, SD-SE, Pl. 1b., with large balanced margins all round neatly cancelled by red Crosses; a very fine and stunning usage of the penny blacks on an underpaid Mulready, and to our knowledge, **this is the only known usage of the 1840 one penny black to pay postage due**; cert. BPA (1989); ex Sparrow, Glassco, Wills, Manzi and Pichai.

A stunning usage



10309



14'000 - 18'000

1841 (Mar 26) 1d Mulready letter sheet (A9) to Bath, neatly cancelled by a stunning strike of the very rare and iconic **Wotton-Under-Edge Maltese cross** in black, with a superb strike of the matching d.s. on the reverse flap which shows perfectly above when opened for display, an outstanding usage and with out doubt one of the finest examples known of this distinctive cross extant, a major exhibition quality rarity; cert. BPA (1992).

A major exhibition showpiece



10310



75'000 - 80'000

1841 (Apr 2) 1d Mulready letter sheet, stereo A234, to Colchester, neatly cancelled by a stunning strike of the very rare and iconic **Wotton-Under-Edge Maltese cross** in black, with a superb strike of the matching d.s. on the reverse flap which opens perfectly for display, additionally uprated by an 1840 1d black pl.5 QA, neatly tied with an equally superb strike of the distinctive cross, an outstanding usage and with out doubt the finest combination of this distinctive cross extant, a major exhibition quality rarity of the highest calibre and one for the philatelic connoisseur; cert. BPA (1989).



10311



25'000 - 30'000

1856 (Jul 31) 1d Mulready lettersheet (A229) to from Ventnor Isle of Wight to Newcastle on Tyne, with red "More to Pay" handstamp and "2 to Pay" in manuscript, and **bearing a 1d pink postal stationery cut out**, cancelled by an 1844 type "971" for Ventnor, the reverse showing Bonchurch void double-arc, Ventnor, London and Newcastle transit marks, an outstanding late usage, and extremely rare; cert. BPA (1995).

10312



400 - 600

1868 (Oct 10) 1d Mulready envelope from Worsley to Grasmere, Britannia uncanceled with Manchester transit cds at lower left and neatly endorsed alongside "2" postage due charge, a spectacular late usage of the Mulready, cert. BPA (2008).



10313



1'200 - 1'500

1841 (11 Jan.) Spooner envelope, rated "2" and "Pre Paid" in manuscript, from Chatham to Southsea with corresponding date stamps on reverse. A very attractive double rate example of this rare envelope, **believed to be one of seven recorded examples.**

Postal Stationery

10314

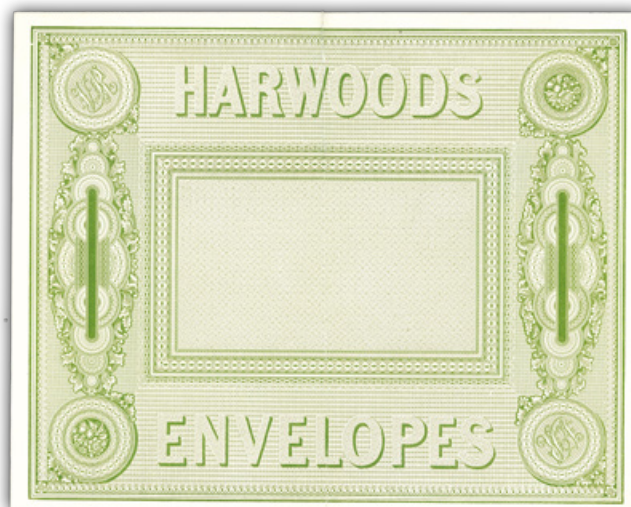


300 - 400

1841 1d pink envelope, sent from Godalming to Mooltan via Kurachee, neatly cancelled by a blue Godalming cds for Oct. 17. 1849. and a London transit cds with Bombay and Kurachee receivers on reverse for November 1849. Sent via Southampton and endorsed "1/-" in manuscript. Super quality and a rare destination item.

The addressee Robert Haines was probably working in some official capacity, as the Punjab had only recently been annexed to the British following the 2nd. Sikh war, the army of Mulraj Singh having besieged Mooltan earlier in the year.

Line Engraved Essays, Plate Proofs, Colour Trials and Reprints



10315

E

750 - 1'000

Harwoods envelopes essay in Green submitted by Charles Whiting, lovely fresh colour; folded through the centre in no way affecting the very fine appearance, rare (S.G. from £2'500).



10316



10317

10316

E

1839 Treasury Competition: Charles Whiting "1 Penny Post Office" essay in red and blue on thin white paper, as upper right design of fig. 15 in SG Spec, a very fine example with four clear margins.

300 - 400

10317

E

1839 Treasury Competition: Charles Whiting "1 Penny Post Office" essay in green and red on thin white paper, as upper right design of fig. 15 in SG Spec, a very fine example with four clear margins.

300 - 400



10318

P

S.G. DP 8c

3'000 - 5'000

The First (Later Rejected) Die for the 1d: 1919 Perkins Bacon reprint on Small Star watermarked paper in orange brown, very rare (SG from £10,000)

10319

E / 18

S.G. DP 9

300 - 400

1840 Background trial essay, a very fine example of the 1935 E.D Bacon reprint in purple on white wove paper, the original trials by Perkins Bacon were to determine the background engraving to be used on the forthcoming 1d black and 2d blue, rarely seen in this colour.

David Feldman is also your partner in Numismatics

Buy & Sell coins from the same trusted team via our partnership with Numisor SA. From single rare coins, to complete collections and investment gold; Numisor offers both an auction route managed by David Feldman, or direct purchase.

Please contact us at info@davidfeldman.com.





10320



10321



10322

- | | | | |
|---|---|---------------|----------------------|
| 10320 | P | S.G. DP20A | 2'000 - 3'000 |
| 1840 1d "Rainbow Trials" state 1 of the sheet of 12, a lower left corner pair in orange-red, very fresh, rare (S.G. £7'000). | | | |
| 10321 | P | S.G. DP20Ba | 1'500 - 2'000 |
| 1840 1d "Rainbow Trials" state 2 1d in lilac-pink on white paper dipped in prussiate of potash, top marginal with close to huge margins, stunning showpiece. | | | |
| 10322 | P | S.G. DP20C(b) | 1'200 - 1'500 |
| 1840 1d Red-Brown Rainbow Trial (state 3) imperforate horizontal pair from the right of the sheet on white wove paper, showing part of the paper makers watermark; very fresh and fine. Rare. | | | |



10323



10324



- | | | | |
|---|---|-----------|----------------------|
| 10323 | P | S.G. DP25 | 5'000 - 7'000 |
| 1d black Original (approved) Die, later Perkins Bacon die proof with "1 / OLD ORIGINAL" engraved below, in black on wove, early impression showing no discernible wear, minor thinning well away from design, fresh and most attractive, very rare; cert. RPS (2003) (S.G. £12'500) | | | |
| 10324 | P | S.G. DP35 | 1'800 - 2'200 |
| 1886 Royal Reprints, matching horizontal marginal inscription pairs lettered OK-OL, black pair (regummed) with wmk inverted, some creasing on both, scarce (SG £9,500 as singles) | | | |



10325



10326

10325

(*) P

S.G. DP43

400 - 600

1841 2d blue trial without corner letters, top marginal single from a trial sheet of twelve which were produced for application to postal notices informing Postmasters of the forthcoming issue, very fine (S.G. £1'500).

10326

E

S.G. DP71(2)

1'200 - 1'500

1850 Prince Consort Essay by Archer, 1d black, slight crease, mint, four good margins, very fine and scarce (SG £3,000).



10327

1837 William Wyon City Medal in bronze, 55mm, to celebrate Victoria's first visit to the City of London after her accession to the throne, one side showing the Queen's head which was the model for the head on the line-engraved postage stamps of 1840-79, including the Penny Black, 1847-54 embossed stamps of and the postal stationery from 1841-1901, superb mint condition, with only 350 examples struck in bronze, see S.G. Spec Vol 1 pg. 7, an ideal frontispiece to a Line Engraved, Embossed or Postal Stationery exhibit collection.

1'200 - 1'500

1840 1d Black and 1d Red plates 1a to 11



10328

* P

6'000 - 8'000

1840 1d black pl.1a TJ, A superb unused imprimatur from the first registration sheet (before hardening), large balanced margins all round, a lovely fresh example and very rare being one of only 28 removed from the sheet, many of which are in institutional collections; cert. BPA (1993); *ex Durham*.



10329



10331

10329



2'500 - 3'000

1840 (May 7) large part entire used in London, bearing 1840 1d black pl.1a FB, with large margins all round, neatly tied by a good strike and a second superb upright strike of the red Maltese cross, the reverse flap with good strikes of the date stamps opening well for display, an attractive **second day "May Date" usage**.



10330



10333

10330



150 - 200

1840 1d black pl.1b HL with very good to huge margins, showing partial sheet margin at right, clear red MC, superb.

10331



600 - 800

1840 1d black pl.1a LK worn impression, used on entire letter to Oswestry dated **30 May 1840**, neatly tied by a good strike of the red Maltese cross; the reverse flap with Wrexham date stamp in red which opens perfectly for display; a fine and attractive May date usage.



10332



1'500 - 2'000

1840 1d black pl.1a MG with crisp London "8" in Maltese Cross, just cut into at lower right square, a very striking example of this rare cancellation (S.G. £12'000)

10333



100 - 150

1840 1d black pl.1a PB, RE-ENTRY, with large to huge margins, almost complete red MC, showing re-entries in SW square, very fine (SG AS2b).



10334ex



10336



10337



10338

10334



500 - 700

1840 1d black pl.1 study lettered RK, plate 1a very fine tied on fragment by red MC, plate 1b with two good to fine examples, 1d red with close to good margins, also two examples from plate 1c (SG AS10), one with good margins, a fine & a scarce group (6)



10335



2'000 - 3'000

1840 1d black pl.1a SJ with large to huge margins, unused with large part original gum, superb appearance, cert. Brandon (2005) (SG Spec AS1)

10336



300 - 400

1840 1d black pl.1b AI with good to very good even margins, showing INVERTED WATERMARK variety, clear partial red MC, very fine and scarce.

10337



120 - 150

1840 1d black pl.1b BG, large to very margins all around with part of adjoining stamp at bottom, practically complete crisp superb red MC, fresh & extremely fine

10338



100 - 150

1840 1d black pl.1b EB, with good to large margins, practically complete central black MC, very fine appearance with the scarcer black cross.



10339ex



10340



10341

10339



200 - 300

1840 1d pl.1b IE MATCHED pair, with 1d black with almost complete central red MC, and 1d red with superb clear black MC, both with good to large margins, 1d black shows the constant variety "DOT IN P OF PENNY" (Spec AS5), variety not present on the 1d red being a later printing of course, attractive pair.

10340



300 - 400

1840 1d black pl.1b IF with good to very large even margins, showing INVERTED WATERMARK variety, clear central complete red MC, very fine to superb.

10341



80 - 120

1840 1d black pl.1b IL with non-coincident re-entries showing recut and enlarged letters, good to very large margins, central clear complete red MC, small thin not detracting, very fine appearance (SG AS5c).



10342



10343



10344

10342



100 - 140

1841 1d pl.1b JH red printing from "black plates," with large to very large even margins, superb, crisp black complete MC, very fine, showpiece, ex *R.M. Philips* (S.G. £375).

10343



300 - 400

1840 1d black pl.1b KA with good to large margins, showing INVERTED WATERMARK variety, clear, neat almost complete red MC, very fine.

10344



200 - 300

1840 1d black pl.1b ME, large even margins & superb crisp complete red MC, an exceptional single, showpiece penny black.



10345



10'000 - 15'000

1840 1d black pl.1b MK-ML, mint right sheet marginal horizontal pair with partial marginal inscription "... In Wetting the ...", MK shows non-coincident re-entry, good even margins on other three sides, some creasing, slight rubbing & gum redistribution not detracting from this rare exhibition showpiece, cert. RPS (2007) (SG £35'000+).



10346



10348



10349

10346



300 - 400

1840 1d black pl.1a & pl.1b matched pair lettered PA, both fine used with good to large even margins, plate 1b showing non-coincident re-entry (SG AS5c), both with clear red MC, a very attractive matched pair

10347



150 - 180

1841 1d pl.1b PC-PD pair from red printing with "black plates," very good to huge margins all round, blacks MCs, very fine and scarce in a pair (S.G. Spec. £950).

10348



600 - 800

1840 1d black pl.1b SA, a superb marginal example from the left of the sheet neatly cancelled by a good strike of a deep red Maltese cross, a very attractive and rare marginal example; cert. BPA (2008); ex "*Minimus*" and *Pichai*.

10349



150 - 200

1841 1d pl.1c BL state 3 red printing from "black plates," with good to large margins and showing check corner letters of the adjoining stamp above, almost complete neat black MC, very fine (SG Spec AS8, £650).

10350



1841 1d pl.1c LA, fine used with good margins, black MC showing faint "L" and upper stars (Spec AS7), also plate 1b red FA, good to large margins, black MC showing double letter "F" (Spec AS6f).

200 - 300



10351



10352



10353ex

10351



1840 1d black pl.2 HL, RE-ENTRY, with good to very large margins, complete central red MC, without ray flaws, a superb appearance (S.G. Spec. AS15a £550, AS15f).

100 - 150

10352



1840 1d black pl.2 ND-NE, horizontal pair, large to very margins all around, used with red MC, the right example showing dot in centre of the MC, superb pair demonstrating that appearance or not of dot in MC depending on inking, cert. Louis (2006).

300 - 400

10353



1840 1d pl.2 QD MATCHED pair, 1d black good to large margins, clear and practically complete red MC, light corner bend, 1d red large to very large margins, very fine to superb appearance, with ray flaws and weak NW square.

150 - 200



10354ex



10355



10357

10354



1840 1d black pl.2 RL, MATCHED pair, fine margined 1d black with clear crisp almost complete red MC, and 1d red on cover to Edinburgh tied by fine, clear black MC, bs APR.14.1841, both showing constant variety above NE square, an attractive pair (similar to AS16k).

150 - 200

10355



1841 1d pl.2 SF red printing from "black plates," with fine to very good margins, crisp, sharp and practically complete black MC, tiny natural paper inclusion on cheek otherwise very fine to superb (S.G. £325).

60 - 80



10356



1840 1d black pl.2 SG-SI, horizontal strip of three, clear to large margins, each with clear black MCs, a very fine and attractive used multiple.

700 - 900

10357



1840 1d black pl.2 TL, early and late impressions, two good to very fine examples, with good to large margins and red MC, both showing attractive examples of the double "T", a scarce pair (S.G. Spec AS14c & 15c, £425 each).

200 - 260



10358



10359



10362



10363



10364ex

- 10358** ☉ 1840 1d black pl.3 LF, large margins all round neatly cancelled by a crisp red Maltese Cross; fine. **140 - 200**
- 10359** ☉ 1840 1d black pl.3 PC with good to very good margins, two clear bright crisp red MC, fresh and very fine. **80 - 120**



10360



10361

- 10360** ✉ 1840 1d black pl.4 KA, left sheet marginal with large to huge margins, tied by beautiful clear crisp red MC on folded 1840 entire from Dublin to Sligo, superb Irish usage; cert. Brandon (2005). **300 - 400**
- 10361** ✉ 1840 (May 31) entire letter from Huddersfield to London, bearing 1840 1d black pl.4 KL, with large margins all around, neatly cancelled (not tied) by a superb and virtually upright strike of the red Maltese cross, the reverse with good strike of the ds across the flap, an attractive **Sunday "May Date"** usage. **1'500 - 2'000**
- 10362** ☉ 1840 1d black pl.4 RG, fine to very good margins, neatly cancelled by a fine strike of the black Maltese cross, very fine. **80 - 100**
- 10363** ☉ 1841 1d pl.5 CC red printing from "black plates" provisional repair state 4, with fine to large margins all round, crisp, sharp practically complete black MC, showing very weak check letters, a fine and scarce showpiece (SG Spec AS33b, £350). **200 - 300**
- 10364** ☉ 1840 1d black pl.5 GG, MATCHED TRIO, intense deep shade of 1d black with stunning clear crisp complete central red MC, also 1d grey-black and 1d red, all with clear to good margins, a wonderful group. **180 - 240**

The currency of the auction is the British pound.





10365

*

8'000 - 12'000

1840 1d black pl.5 IL/JL, mint right sheet marginal vertical pair showing partial marginal inscription "... the Labels ABOVE the Adrefs and tow...", good to large margins on other three sides, some creasing, thins & gum redistribution not detracting from this extremely rare exhibition showpiece, cert. Brandon (2008) (SG £35'000+)



10366



10367

10366

⊙

500 - 700

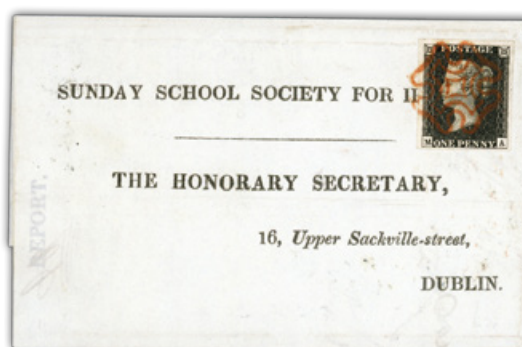
1840 1d black pl.6 AB, top sheet marginal inscriptional single with fine to large margins, showing partial marginal inscription part inscription "...bel. 1/- Per Row o...", clear light red MC, superb appearance, inscriptional showpiece.

10367

⊙

400 - 600

1840 1d black pl.6 AJ-AL, horizontal strip of three, clear to very large margins, each with clear black MC's, a very fine and attractive used multiple.



10368

✉

400 - 500

1840 1d black pl.6 MA, with good to large margins, tied by beautiful clear crisp red MC on folded pre-printed 1840 Sunday School Society For Ireland from Ballycastle to Dublin, a superb Irish usage.



10369



10370



10373

10369



600 - 800

1840 1d black pl.6 MI-ML, horizontal strip of four with right sheet margin showing inscription "In Wetting the", two stamps cut into at top, otherwise margins range from just touching to very large, red MCs, light creasing not detracting from this rare positional multiple.

10370



200 - 300

1840 1d black pl.7 BK, with fine to very good even margins, showing almost complete magenta MC, very fine (SG £2'250).



10371



1'500 - 2'000

1840 1d black pl.7 DI-DL, horizontal strip of four, clear to very large margins, each superbly cancelled by clear, sharp, crisp red MCs, scissor cut between 3rd and 4th stamp, clear of design, otherwise very fine and an attractive used multiple.



10372



2'000 - 2'500

1844 (Jun 8) large part entire to Kirkwell, bearing 1840 1d black pl.7 EF (cut into at top) and 1843 1d red-brown pl.39 RG, each neatly cancelled by a fine and upright strike of the black Maltese cross, additionally tied by blue manuscript, the reverse showing framed Stromness and Kirkwall date stamps; a very rare mixed franking; cert. BPA (1993).

10373



100 - 150

1840 1d black pl.7 GD with good to huge margins showing portions of three neighbouring stamps, complete clear neat central red MC, very fine.



10374



10376

10374



700 - 1'000

1840 1d black pl.7 II-IL, horizontal STRIP OF FOUR on 1840 (Aug 8) entire, with II just touched and IJ cut into otherwise fine to large margins, tied by red MC, sent from Saffron Walden to Cambridge with corresponding bs, vertical filing fold clear of stamps, an attractive and scarce multiple on cover.



10375



1'000 - 1'500

1840 1d black pl.7 NA, good to large margins, cancelled by neat "PAID ABERDEEN" boxed hs in red, very fine and extremely rare cancel on a penny black, cert. RPS (1969), ex *Bollen*.

10376



600 - 800

1840 (Dec 9) entire letter from Norwich to Wymondham, Norfolk, bearing OK-OL horizontal pair of 1d. blacks, Pl. 7, with good margins all round, neatly tied by red Maltese crosses and showing "Missent to Larlingford" in red manuscript at right, the reverse showing "To Late" handstamp in black, a fine and attractive usage; cert. BPA (1998).



10377



300 - 400

1840 1d pl.8 EA from the red printing, left sheet marginal with fine to large margins, showing portion of inscription "ent." and "GE" watermark, clear black MC, showpiece.

Additional images from larger lots
may be available at davidfeldman.com

If a lot of your interest is not pictured in our website, you may request images at info@davidfeldman.com



10378



7'000 - 10'000

1840 1d black pl.8 EG and EI in combination with 1840 2d blue pl.2 TG, tied on 1841 cover by crisp, clear black MC strikes, sent from Gosport to London, touched in places and EG defective at top left, though barely detracting from this rare and truly desirable exhibition showpiece; cert. BPA (2009).



10379



10381



10382

10379



100 - 140

1841 1d pl.8 JL red printing from "black plates," right sheet marginal with large to huge margins all round, sharp, crisp and complete black MC showing pin dot in centre, tiny scuff between "O" and "S" otherwise a superb looking stamp, showpiece (S.G. £240).



10380



800 - 1'000

1841 1d pl.8 SG red printing from "black plates," good to large even margins & cancelled by almost complete RED MC, some wrinkles, very rare, cert. Brandon (2008) (S.G. Spec. £3'750).

10381



70 - 90

1840 1d black pl.8 SG, fine to good margins, neatly cancelled by a good strike of the black Maltese cross, affixed to piece, fine.

10382



200 - 300

1840 1d black pl.8 TL, very large margins all around, used with practically complete red MC, an exceptional and superb bottom right corner marginal example, interestingly showing constant variety in NE corner, a superb showpiece (S.G. Spec. AS49c £600).



10383



10384



10385

10383



1840 1d black pl.9 BA, close to large margins neatly cancelled by a crisp black London “broken points” Maltese Cross; fine.

150 - 200

10384



1840 1d pl.9 BH-CI, red printing from “black plates”, block of four, just touched to large margins, each showing black MCs, showing “O” flaws, plus used single OJ showing square “J” (S.G. £240), a scarce lot (S.G. £4'750 for block of four).

300 - 400

10385



1840 1d black pl.9 FB with fine to large margins, clear red MC, with basal shift variety, natural paper inclusion at TL, matched with 1d red with fine to large margins, black MC, fine (SG Spec AS56b £475 & AS57b £200)

100 - 150



10386



10387



10389

10386



1840 1d pl.9 FI-FJ, red printing from “black plate”, with good to large margins, showing two clear strikes of the London “10” in MC cancellations, very fine (S.G. £1'700+).

200 - 300

10387



1841 1d pl.9 HJ red printing from “black plates,” sharp impression, with fine to large margins, crisp clear large part black MC, very fine (S.G. £180).

50 - 70



10388



1840 1d pl.9 IL, red printing from “black plate”, variety WATERMARK INVERTED, clear to good margins all around, black MC, small tear at right, still very good appearance, extremely rare (S.G. AS59f, £6'000).

2'000 - 3'000

10389



1841 1d pl.10 DI red printing from “black plates,” with good to large even margins, large part clear black MC, very fine (S.G. £190).

50 - 70



10390



500 - 700

1840 1d pl.10 HJ, red printing from "black plate", good even margins, clear central practically complete black MC showing "O" flaw state 2 & square "J", also EB good to large margins used.

10391



70 - 90

1841 1d pl.10 IH red printing from "black plates," clear sharp impression, with fine to very good margins, on 1841 folded letter sheet to Worcestershire, tied by clear black MC, London bs, clean and attractive (S.G. Spec. £400).



10392



10393



10394

10392



200 - 240

1840 1d black pl.10 RH with good to very large margins, red MC, showing "P" converted to "R" variety, very fine and an unusual error (S.G. Spec AS66c (variety) £1'100, AS66h (red MC) £1'500).

10393



180 - 220

1840 1d black pl.10 RJ showing variety corner check letter P converted into R, with fine to large margins, clear neat crisp black MC, very fine and an unusual and scarce error (AS66c £750).

10394



300 - 400

1840 1d pl.11 DA-EB red printing from the "black plate" block of four, touched to large margins, each with black MC, showing characteristic small NE corner break, listed but unpriced by SG as a block of four.

Plate 11 with Blue Maltese cross!



10395



8'000 - 10'000

1840 1d black, MA, Pl. 11, a superb used example with huge margins on three sides and a good sized margin at foot, neatly cancelled by a fine strike of the incredibly rare **blue Maltese Cross**, an exhibition showpiece for the connoisseur; cert. RPS (2000) (Although now unpriced in the Specialised catalogue, the nearest comparable rarity factor on this plate is the red Maltese cross at £25'000).



10396



10399



10400



10401

10396



80 - 120

1841 1d pl.11 PG red printing from the "black plate", with large to huge margins, light black MC, superb appearance.

VR Official - Cancellations Trial



10397



7'000 - 9'000

1840 VR Official 1d Black lettered NK, used for cancellation removal experiments and with 7-ring obliterator in black demonstrating the official attempt at removal, very rare (S.G. VR1, £22'500).

Background: Illustrated in Rowse at page 71

1840 2d Blue (ordered by plate number)



10398



2'000 - 2'500

1840 2d blue pl.1 EA-ED horizontal strip of four with large margins all around, neatly cancelled by good strikes of the red Maltese cross, a rare and most attractive multiple; cert. RPS (1993).

10399



150 - 200

1840 2d blue pl.1 GA, close to good margins, neatly cancelled by a virtually complete strike of the red Maltese cross; very fresh and fine appearance.

10400



150 - 200

1840 2d blue pl.1 LB, fine to good margins, neatly cancelled by a fine large part strike of the black Maltese cross leaving a virtually clear profile; fresh and attractive.

10401



200 - 300

1840 2d blue pl.1 RK-RL horizontal pair, very close margins at top of RK, fine to good margins on other sides, neatly cancelled by two strikes of the red Maltese cross, a scarce multiple.

Please ensure your bids arrive on time!

In the case of equal bids, the first bid received will take precedence.



10402



2'000 - 3'000

1840 2d blue pl.2 CB with a very fine strike of a **blue Maltese Cross**, close to very large margins, faint diagonal bend at top left not detracting from the superb appearance of this rare coloured cancellation (S.G. Spec. £15'000).



10403



10404

10403



200 - 300

1840 2d blue pl.2 QJ, fine to enormous margins showing portions of adjoining stamps at left and at foot, neatly cancelled by a black Maltese cross, corner crease at lower left, very fresh and attractive.

10404



120 - 150

1840 2d blue pl.2 QL, fine to good margins, neatly cancelled by an upright strike of the black Maltese cross, thin spots, very fresh and attractive.

1841 1d Red

10405



400 - 600

1842 (Jun 7) Entire from Welshpool (Wales) to London, with 1841 1d Red KA, just touched at lower right otherwise good to large margins, tied by black Welshpool distinctive Maltese Cross with solid centre, top backflap with Welshpool and arrival cds which opens to display nicely, fine and scarce distinctive MC on cover (S.G. £3'000).



10406



6'000 - 8'000

1843 (Nov 20) envelope from Ireland to Sydney New South Wales, bearing two vertical and two horizontal pairs of the 1841 red-brown, Pl. 35, lettered RG-SG, RJ-RK, RH-RI, RL-SL, cancelled by black Maltese crosses, and showing Strokestown (Roscommon) and SHIPLETTER datestamps; the stamps with some faults though a spectacular and rare overseas destination; cert. BPA (2003).

1841 2d Blue



10407



10409



10411

10407



400 - 600

1841 2d blue pl.4 OA, very large margins all round, neatly cancelled by a fine strike of a Scottish type numeral in mixed green and black ink, leaving a clear profile, very scarce coloured cancel (S.G. Spec. ES14wd £6'000 for green numeral).

1854-70 Perforated Line Engraved



10408



S.G. 19

6'000 - 8'000

1854 2d blue pl.4 NA-OB, a magnificent mint o.g. block of four, superb rich fresh colour, very lightly mounted with a couple of handstamps on reverse, very rare; cert. RPS (1949), ex *A/cock* (S.G. £22'000 as a block of four).

10409



S.G. 35

800 - 1'200

1854-57 2d blue pl.6 HE/IF, wmk LC, perf.14, in mint block of four, fine and rare multiple (S.G. Spec. £17'000).

10410



S.G. 36

400 - 600

1868 (Apr) Envelope from Ireland to London with two 156-58 1d red each cancelled by Irish local "LISSELANE" (Co. Cork) hs, reverse struck with the same hs along with Dublin transits and London arrival, fine and very rare usage of a local Irish hs on the stamps.

10411



S.G. 42

300 - 400

1861, 1d rose red pl.50 BJ-CL block of six, very fine mint n.h., scarce.

Through our different partnerships, we can also assist you to sell and buy

Other Collectibles

If you or someone you know wish to sell coins and banknotes, old books and manuscripts, Olympic memorabilia, watches and jewellery, classic cars, etc., please contact us at [info@davidfeldman.com](mailto:info@ davidfeldman.com)



A magnificent half sheet of superb colour



10412

** * 田

S.G. 45 15'000 - 20'000

1858 2d blue pl.9 PA-TL, a magnificent half sheet of 60 from the foot of the sheet with full deckle edge margins and plate numbers in each corner; superb rich fresh colour, some hinge strengthening on reverse as to be expected of a piece this size, which is in a superb state of preservation; a great exhibition rarity (S.G. £28'200+++ as blocks of four and singles).



- 10413

(*) P

S.G. 45 var

1858 2d blue pl.7 AF imperforate imprimatur, very fine and very rare with only 22 examples removed from the sheet (S.G. £4'750).

900 - 1'200
- 10414

(*) P

S.G. 45 var

1858 2d blue pl.7 BJ imperforate imprimatur, four margins, very fine and very rare, being one of 22 possible examples (S.G. £4'750).

900 - 1'200
- 10415

P

S.G. 45var

1858 2d blue pl.9 AF imperforate imprimatur, good to large margins all round, very rare with only 22 examples removed from the sheet. (S.G. £4'750).

800 - 1'000

1855-1900 Surface Printed



- 10416

P

2'000 - 3'000

1905 (3rd Nov.) chemical experiments, an appendix sheet marked confidential from the De La Rue Day book signed by Hugo Muller (De La Rues consulting chemist), showing three vertical columns of different coloured Victoria head dummy stamps, the first column marked "Cancelled" the second marked "Cancelled and partly cleaned" the third marked "Cancelled and Cleaned"; a very rare an highly important archive piece.

1862-64 Small Uncoloured Corner Letters



10417



10418



10419



10420

- 10417** * P S.G. 84 var **500 - 600**
1862 6d lilac pl.3 BG imperforate imprimatur, mint o.g., very scarce being one of only 25 taken from the sheet.

1865-67 Large Uncoloured Corner Letters, Wmk Large Garter & Emblems

- 10418** * P S.G. 92 var **600 - 800**
1865 3d rose pl.5 AF, marginal imperforate imprimatur from the top of the sheet, rare "abnormal" that was never issued on emblems paper, being one of only 23 possible examples.

- 10419** * 田 S.G. 94 **300 - 400**
1873 4d vermilion pl.11 QK/RL, a very fine and fresh block of four with large part original gum, showing an unusual paper flaw caused by superfluous material on the printing plate, a scarce multiple; cert RPS (1989).

- 10420** * P S.G. 97 var **600 - 800**
1865 6d lilac pl.6 TJ imperforate imprimatur, original gum, very fine and rare with only 21 possible examples; ex *Dr. Serval* (1976).

1867-80 Large Uncoloured Corner Letters, Wmk Spray of Rose



10421



10422

- 10421** P S.G. 102 var **400 - 600**
1867-80 De La Rue 3d die proof in black on glazed card, 92x60mm, with void corner letters and plate numbers, endorsed "BEFORE STRIKING", dated "Oct 1, 1872" and initialled in pencil; ex *Douglas Latto*.

1867-83 High Values

- 10422** P S.G. 128 var **400 - 600**
1878 10s De La Rue die proof in black on white glazed card, 92x60mm, dated "Apr 30, 1878", very fine and rare.



10423



10424

10423

P

S.G. 128 var

400 - 600

1878 10s De La Rue die proof printed in black on glazed card (91x60mm), dated "May 2, 1878", scarce.

10424

P

S.G. 128 var

400 - 600

1878 10s De La Rue die proof printed in black on glazed card (61 x 92mm), dated "May 3, 1878", very fine and scarce.



10425



10426

10425

* S

S.G. 133s

1'000 - 1'500

1867-83 £5 orange BG on blued paper overprinted "SPECIMEN" (type 9), large part o.g. marginal example from the foot of the sheet, a lovely fresh example.

10426

⊙

S.G. 137

800 - 1'200

1867-83 £5 orange DK on white paper, bold central Chester cds, very fine (S.G. £3'500).

1873-80 Large Coloured Corner Letters, Wmk Small Anchor & Orbs



10427



10428

10427

(*)

S.G. 138 var

200 - 300

1873-80, 2 1/2d rosy mauve pl.4 imperf. imprimatur, mint h.r., good margins, very fine, one of only 22 possible examples of which many are in institutional collections.

10428

P

S.G. 147 var

300 - 400

1878 6d. Grey, SG, Pl. 16, imperforate imprimatur, good to large margins all round, very rare with only 22 examples removed from the sheet.

10429



S.G. 150

50 - 70

1878 (Feb 1) entire from London to Dominica with 1873-80 1s wing marginal tied by London "78" "L1" duplex, Dominica arrival bs, some insignificant soiling, fine and scarce destination.



10432

10430

10430



S.G. 153 var

800 - 1'200

1877 4d. sage-green, Pl. 15, SI-TL imperforate marginal block of eight from the lower right corner of the sheet, showing current number "428", each stamp overprinted "SPECIMEN" (type 9), TK additionally showing large "5" in "15", a magnificent and unique positional multiple.



10431



S.G. 156

150 - 200

1876 8d orange GE, a very fine and fresh well centred example large part o.g., lovely vivid colour, very scarce so fine (S.G. £350).

1880-83 Large Coloured Corner Letters, Wmk Imperial Crown

10432



S.G. 161

1'000 - 1'500

1880-83 6d grey pl.18 in mint right marginal block of eight, light hinge traces with four stamps mint n.h., very fine and fresh multiple (S.G. £3'200+).

1880-81 Provisional Issue and 1881 1d Lilac



10433



S.G. 169

180 - 240

1880-81 5d indigo mint n.h., very fine and fresh (S.G. £725 for n.h.)



10434

P

S.G. 170 var

500 - 600

1901 1d. die proof of issued design in black on glazed card (60 x 90mm.) marked “AFTER STRIKING” and dated “22 JAN 01” in blue, additionally initialed and dated. Scarce.



10435



10436



10437



10438



10439

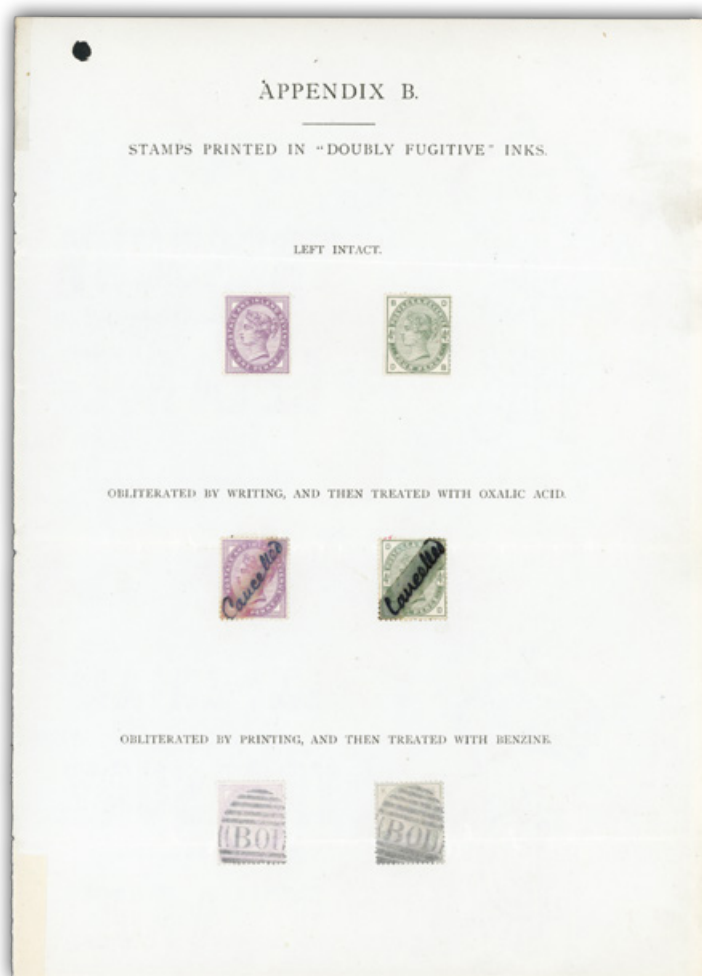
- 10435
- P
- S.G. 170 var
- 300 - 400
- 1881 1d perforated colour trial in greenish-slate on pink, very fresh, attractive and rare (S.G. from £3'000).
- 10436
- P
- S.G. 170 var
- 300 - 400
- 1881 1d perforated colour trial in purple on pink, very fresh, attractive and rare (S.G. from £3'000).
- 10437
- P
- S.G. 170 var
- 300 - 400
- 1881 1d perforated colour trial in purple on pink, very fresh, attractive and rare (S.G. from £3'000).
- 10438
- P
- S.G. 170 var
- 300 - 400
- 1881 1d perforated colour trial in dull carmine on white paper, very fresh, attractive and rare (S.G. from £3'000).
- 10439
- P
- S.G. 170 var
- 300 - 400
- 1881 1d perforated colour trial in carmine on white paper, very fresh, attractive and rare (S.G. from £3'000).

Bidding Steps

All bids in British pounds (GBP)

50-100	→ 5	500-1000	→ 50	10'000-20'000	→ 1'000
100-200	→ 10	1'000-2'000	→ 100	20'000-50'000	→ 2'000
200-500	→ 20	2'000-5'000	→ 200	50'000-100'000	→ 5'000
		5'000-10'000	→ 500	100'000-200'000	→ 10'000

Bids between these steps will be adjusted accordingly to the next higher bid step.
The bidder is bound by his/her offer until a higher bid has been validly accepted.



10440

P

S.G. 172 var, 192 var

2'000 - 3'000

1881 CONFIDENTIAL. "A Brief Description of Thos. De La Rue & Co's, Fugitive and Doubly Fugitive Adhesive stamp Printing Inks" leaflet including a full explanation (simply put, fugitive inks showed fugitivity to solvents and doubly fugitive to water-based solvents) including appendix pages A and B showing stamps and annotated treatments to remove cancels; the pages now separated though all present; very rare.

1883-84 & 1888 High Values

10441

P

300 - 400

1884 (1st. Apr) lithographed notice sent to Postmasters, advertising the new stamps including high values to £5 orange, in close to issued colours on buff card. Scarce.



10442

* P

S.G. 176 var

1'000 - 1'500

1884 5s rose CF imperforate imprimatur, large part o.g., superb and rare with only 49 possible examples.



10443



10444



10445

10443

* S

S.G. 177as

400 - 500

1883-84 10/- Cobalt, KH, on blue paper, overprinted "SPECIMEN" (type 9), large part OG, thin spot in the centre, otherwise a good example of this rare shade. Cat £5,500.

10444

* S

S.G. 178s-181s

200 - 300

1883-84 2/6d. lilac and 5/- crimson each overprinted "SPECIMEN" (type 9), large part OG, the 5/- a little toned, otherwise good examples. Cat £875.

10445

*

S.G. 180

300 - 400

1884 5s rose KH mint large part o.g., light gum wrinkles, fresh appearance (S.G. £1'100).



10446



10447

10446

* S

S.G. 185s

200 - 300

1884 £1 brown-lilac, wmk three crowns, FC, overprinted "SPECIMEN" (type 9), large part OG (toned), thin spot not affecting the fine appearance.

1883-84 Lilac & Green Issue

10447

P

S.G. 188 var

300 - 350

1883 1 1/2d colour trial in blue-grey, AD, large part o.g., very rare with no more than **two or three** of each colour in private hands.

1887-1900 Jubilee Issue & 1891 £1 Green

10448

*

300 - 400

1887 page from the "Stamp Committee" book showing the jubilee issues to 1/-; some foxing, otherwise fine.



10449

E

S.G. 197 var

2'500 - 3'000

1884 1/2d essay in the adopted design of the 1s, a beautifully executed hand painted stamp size essay on buff paper, mounted on card, a stunning exhibition showpiece, unique; ex *De La Rue archives* (Robson Lowe lot 73).



10450

P

S.G. 197 var

500 - 600

1887 1/2d die proof of issued design in black on glazed card (60x90mm), un-marked, scarce.



10451

E

S.G. 198 var

2'500 - 3'000

1885 1 1/2d "tablet" essay, a beautifully executed hand painted stamp size essay mounted on card, a stunning exhibition showpiece, unique; ex *De La Rue* archives (*Robson Lowe*, lot 36).



10452



10453



10454



10455

10452

** E P

S.G. 198 var

700 - 800

1887-1900 Jubilee issue reply-paid essay with head plate printed in blue in mint n.h. left marginal block of four on crown wmk paper, minor gum wrinkles, fine and fresh.

10453

** E P

S.G. 198 var

200 - 300

1887-1900 Jubilee issue reply-paid essay with head plate printed in blue in mint n.h. top marginal single on crown wmk paper, light gum wrinkles, very fine and fresh.

10454

P

S.G. 198 var

300 - 400

1887-92 1 1/2d stamp size die proof of the head plate in black on glazed card. Scarce.

10455

P

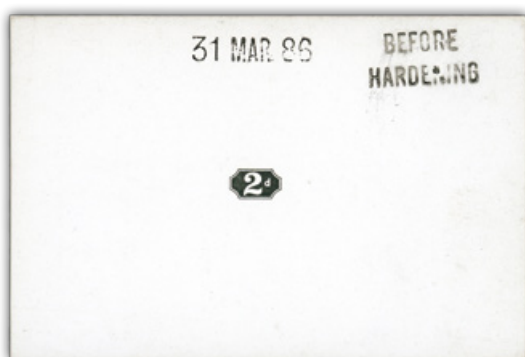
S.G. 198 var

300 - 400

1887-92 1 1/2d stamp size die proof of the duty plate in black on glazed card. Scarce.



- 10456** E S.G. 199 var **2'500 - 3'000**
 1885 2d "tablet" essay a beautifully executed hand painted stamp size essay mounted on card, a stunning exhibition showpiece; unique; ex *De La Rue* archives (*Robson Lowe*, lot 51).



10457



10458

- 10457** P S.G. 199 var **500 - 600**
 1886 2d die proof of the unissued duty plate (solid background) in black on glazed card (60x90mm) marked "BEFORE HARDENING" and dated "31 MAR 86" in black. Scarce.

- 10458** P S.G. 199 var **500 - 600**
 1886 2d die proof of the unissued duty plate (engine turned background) in black on glazed card (60x90mm) marked "BEFORE HARDENING" and dated "31 MAR 86" in black. Scarce.



10459



10460



10461

- 10459** P S.G. 199 var **500 - 600**
 1886 2d die proof of the issued duty plate (lined background) in black on glazed card (60x90mm) marked "BEFORE HARDENING" and dated "25 MAY 86" in black. Scarce.

- 10460** P S.G. 199 var **300 - 400**
 1887-92 2d stamp size die proof of the issued duty plate in black on glazed card. Scarce.

- 10461** P S.G. 199 var **300 - 400**
 1887-92 2d stamp size die proof of the issued head and frame plate in black on glazed card. Scarce.



10462

* P

S.G. 201 var

2'000 - 3'000

1887-1900 Jubilee issue 2 1/2d colour trial in green on yellow paper, line perf.14 all around, mint l.h., very fine and fresh, very rare; ex Weiss and Besançon.

Note: The colour trials of the 2 1/2d, 3d and 6d were produced by De La Rue for a report to demonstrate how to avoid the newly discovered threat of photographic forgery.



10463

E

S.G. 202 var

2'500 - 3'000

1885 3d essay submitted by G. R. Smith, a beautifully executed hand painted stamp size essay on buff paper, mounted on card, a stunning exhibition showpiece, unique; ex De La Rue archives (Robson Lowe, lot 17).



10464



10465



10466

10464

P

S.G. 202 var

300 - 400

1887-92 3d stamp size die proof probably intended for the striking book in black on glazed card. Scarce.

10465

P

S.G. 205 var

1'500 - 2'000

1887-1900 Jubilee issue 4d De La Rue composite die proof, with the first rejected die for the duty plate (alternate shading of the values) in black on glazed card, reduced to stamp size, with head plate die proof cut to shape and hinged in place, reverse with ms "4d / Die Chg'd / 17 Mar / 86" in red, unique; ex De La Rue archives and "Aureum".

10466

P

S.G. 205 var

500 - 600

1886 4d die proof (1a) of the duty plate (the upper corner values inverted) in black on glazed card (60x90mm) marked "BEFORE HARDENING" and dated "17 MAR. 86" in black. Scarce.



10467

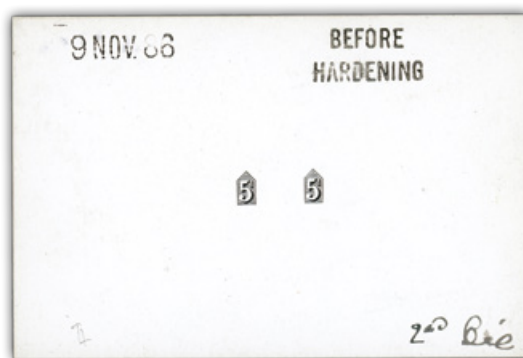


10468

- 10467** P S.G. 205 var **300 - 400**
1887-92 4d stamp size die proof of the duty plate (die 1b) in black on glazed card. Scarce.
- 10468** P S.G. 205 var **300 - 400**
1887-92 4d stamp size die proof of the head plate in black on glazed card. Scarce.



10469



10470

- 10469** P S.G. 206 var **500 - 600**
1887-1900 Jubilee issue 4 1/2d De La Rue die proof of the head plate in black on glazed card, 92c61mm, endorsed "BEFORE HARDENING" and dated "25 MAY 92", very fine; ex *De La Rue* archives and "*Besançon*".
- 10470** P S.G. 207 var **500 - 600**
1886 5d die proof of the duty plate (2nd Die, Die 6) in black on glazed card (60 x 90mm.) marked "BEFORE HARDENING" and dated "9 NOV. 86" in black. Scarce.



10471



10472

- 10471** P S.G. 207 var **300 - 400**
1887-92 5d stamp size die proof of the duty plate in black on glazed card, endorsed "2nd. Die". Scarce.
- 10472** P S.G. 207 var **300 - 400**
1887-92 5d stamp size die proof of the head and frame plate in black on glazed card. Scarce.

Find the bid form on the last page of this catalogue.



10473

P

S.G. 209 var

2'500 - 3'000

1884 (9 Dec.) an exquisitely executed hand painted essay by Carey for the 9d value (unadopted) stamp size mounted on card; a stunning exhibition show piece; ex *De La Rue archives* (Robson Lowe, lot 25).



10474



10475

10474

P

S.G. 209 var

300 - 400

1887-92 9d stamp size die proof of the head plate in black on glazed card. Scarce.

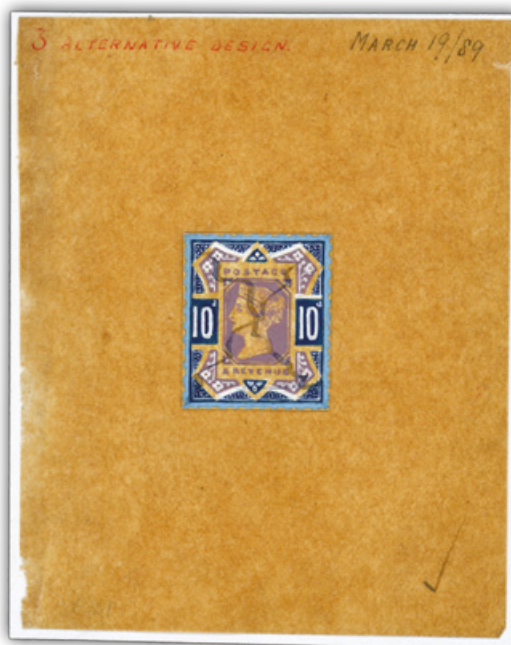
10475

P

S.G. 209 var

300 - 400

1887-92 9d stamp size die proof of the frame plate in black on glazed card. Scarce.



10476

E

S.G. 210 var

2'500 - 3'000

1889 (19 Mar) an exquisitely executed hand painted essay for the 10d value (unadopted) mounted on grease proof paper, annotated "3 ALTERNATIVE DESIGN" and dated "MARCH 19/89"; a stunning exhibition show piece; ex *De La Rue archives*.

Note: On 15th March 1889 De La Rue Submitted a series of essays, to be followed on 19th March by an essay annotated "3 Alternative design (above) based on the previous design 3 but with smaller lettering. The former was originally favoured but the latter was eventually accepted. On 22nd march further essays were submitted closely based on previous designs (as the following lot) though were not adopted.



10477

E

S.G. 210 var

2'500 - 3'000

1889 (22 Mar) an exquisitely executed hand painted essay for the 10d value (unadopted) mounted on grease proof paper, annotated "C" and dated "MARCH 22/89"; a stunning exhibition show piece; ex De La Rue archives.



10478

P

S.G. 210 var

2'400 - 3'000

1887-1900 Jubilee issue 10d colour trial with head plate in green and duty plate in purple, line perf. 14, affixed to piece and tied by "B01" obliterator, **only two examples recorded in this colour combination with obliteration**; ex Heath and "Besançon".



10479



10480



10481

10479

P

S.G. 210 var

300 - 400

1887-92 10d stamp size die proof of the frame plate in black on glazed card. Scarce.

10480

P

S.G. 210 var

300 - 400

1887-92 10d stamp size die proof of the head plate in black on glazed card. Scarce.

10481

P

S.G. 211 var

300 - 400

1887-92 1s stamp size die proof probably intended for the striking book in black on glazed card. Scarce.



10482

* S

S.G. 212 var

1'000 - 1'500

1891 £1 green OA imperf. with "SPECIMEN" type 9 overprint, mint o.g., very fine and scarce (S.G. £6'500).



10483



10484

10483

* S

S.G. 212s

240 - 300

1891 £1 green EA with "SPECIMEN" type 11 overprint, mint o.g. with light hinge, very fine (S.G. £1'100).

10484

* S

S.G. 212s

200 - 300

1887-92 £1 green ND, overprinted "SPECIMEN" (type 11), large part OG, some creasing/wrinkling not affecting the fine appearance.



10485



10486



10487



10488

10485

P

S.G. 213 var

300 - 400

1900 1/2d perf. 14, colour trial in lime green on gummed unwatermarked paper; a couple of fox spots on reverse, not affecting the fresh and fine appearance, rare (S.G. from £2'750).

10486

* P

S.G. 213 var

300 - 400

1900 1/2d perf. 14 colour trial in dull blue-green on gummed unwatermarked paper; fresh and attractive, rare (S.G. from £2'750).

10487

P

S.G. 213 var

300 - 400

1900 1/2d perforated 14, colour trial in blue-green (issued colour) on gummed unwatermarked paper; fresh and attractive, rare (S.G. from £2'750).

10488

* S

S.G. 213 var

300 - 400

1900 1/2d blue-green, perf. 14, overprinted "CANCELLED" (type 18), large part o.g., fresh and attractive; cert. BPA (1992) (S.G. £1'250).

You may bid LIVE by Internet at davidfeldman.com



10489

E

S.G. 214 var

30'000 - 35'000

1899 (Nov 9) Eighteen composite colour trials were submitted with heads printed in doubly-fugitive inks, green or purple, for security purposes. The frames were printed in colours either new or in use already.

A stunning set of nine 1s trials mounted on cards numbered 1-9 and dated "9 NOV. 99" with the heads in doubly-fugitive purple; a superb and extremely rare exhibition showpiece set. (S.G. £112'500).

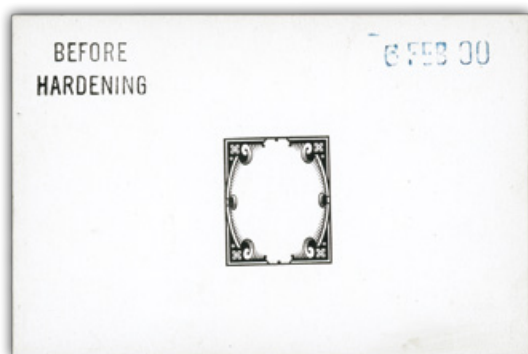


10490

E

S.G. 214 var 30'000 - 35'000

A stunning set of nine composite 1s trials mounted on cards numbered 1a-9a and dated "9 NOV. 99" with the heads in doubly-fugitive green; the 1/- in the issued colour and endorsed "Approved" in red manuscript; a superb and extremely rare exhibition showpiece set. (S.G. £112'500).



10492



10493

10491

10491

P

S.G. 214 var

500 - 600

1900 1s die proof of the frame plate in black on glazed card (60x90mm) marked "BEFORE HARDENING" and dated "6 FEB 00" in blue. Scarce.

10492

P

S.G. 214 var

300 - 400

1900 1s stamp size die proof of the head plate in black on glazed card. Scarce.

10493

P

S.G. 214 var

300 - 400

1900 1s stamp size die proof of the frame plate in black on glazed card. Scarce.

King Edward VII

10494

400 - 500

1901 (17 Dec.) notice no 31 for "POSTAGE STAMPS" describing how on the 1st January next postage stamps bearing the Kings portrait of the value of 1/2d., 1d., 2 1/2d. and 6d. respectively, will be on sale at various Post Offices in the UK and announcing that the colour of the new 6d. stamp will be the same as the present 1d. stamp so to take care of mistaking one for the other; Some restoration and faults though a rare notice.

10495

400 - 500

1904 (15 Mar.) cut down notice for the "ISSUE OF BOOKS OF STAMPS" describing how books of 24 1d. stamps of a convenient size for carrying in the pocket priced at 2s. 01/2d.; some faults though rare.

1902-10 De La Rue Issues



10496

S

1'000 - 1'500

1910 1/2d, 1d, 1 1/2d, 2d, 2 1/2d, 3d, 6d and 1s, also 7d (3) and 4d (3), on archive pieces from the Madagascar UPU collection and tied by POSTES/COLLECTION DE BERNE/MADAGASCAR handstamp in red, and signed by the director of post and telegraphs; fresh and rare group.



10497



10498



10499



10500

- | | | | |
|---|------|--------------|------------------|
| 10497 | ** P | S.G. 219 var | 400 - 600 |
| 1902 6d Grey-Black mint n.h. colour trial on unwatermarked chalky paper selvedge of the 1/2d Colonial issue, perforated at foot with green marginal rule, very rare (see Spec. vol.2 p.45). | | | |
| 10498 | * P | S.G. 219 var | 240 - 300 |
| 1906 1d imperf. colour trial in cerise on Crown wmk paper, mint l.h. right marginal, faint gum wrinkle at right mentioned for accuracy, very fine. | | | |
| 10499 | * P | S.G. 219 var | 200 - 300 |
| 1906 1d carmine red colour trial on gummed watermarked crown paper, made from a special plate of 20 electros, very fine and scarce. | | | |
| 10500 | ** P | S.G. 219 var | 150 - 200 |
| 1906 1d Colour trial in carmine-red on Crown watermarked paper, perf.14, printed from a special plate of 20 electros, mint n.h., very fine. | | | |



10501



10502

- | | | | |
|--|------|--------------|------------------|
| 10501 | ** 田 | S.G. 229 | 300 - 400 |
| 1902-10 2d dull blue-green and carmine, superb mint n.h. corner marginal block of eight from the lower left corner of the sheet, printed from plates H2/D4; a lovely block. (S.G. £1'440). | | | |
| 10502 | P | S.G. 235 var | 400 - 600 |
| 1901 4d De La Rue die proof (head plate) printed in black on glazed card (92 x 60mm) dated "28 NOV 01" and marked "AFTER HARDENING", very scarce. | | | |

David Feldman is also your partner in Numismatics

Buy & Sell coins from the same trusted team via our partnership with Numisor SA. From single rare coins, to complete collections and investment gold; Numisor offers both an auction route managed by David Feldman, or direct purchase.

Please contact us at info@davidfeldman.com





10503



10504



10505

- 10503** * S S.G. 245s **100 - 120**
1902 6d pale dull purple, overprinted "SPECIMEN" (type 15), large part o.g., fine and scarce.
- 10504** * S S.G. 249s **200 - 300**
1910 7d grey-black, overprinted "SPECIMEN" (horse shoe type 17), large part o.g., fine and very rare (S.G. £700).
- 10505** * S.G. 255 var **400 - 500**
1906 10d dull purple and carmine, overprinted "CANCELLED" (type 18), showing an additional strike of the "CANCELLED" at the top, large part o.g., very fresh and attractive; ex *NPM archive* (S.G. £1'800).



10506



10507

- 10506** * S S.G. 260s-265s **400 - 500**
1902 2s6d, 5s and 10s, each overprinted "SPECIMEN" (type 16), mint o.g., each displaying lovely fresh colour; an attractive and scarce trio of high values (S.G. £1'300).
- 10507** * S S.G. 265s **200 - 250**
1902 10s ultramarine, overprinted "SPECIMEN" (horse shoe type 17), large part o.g., some wrinkling in no way affecting the fresh and fine appearance (S.G. £500).



10508



10509

- 10508** ** S.G. 266 **600 - 800**
1902 £1 dull blue green mint n.h., couple of small faint gum bends mentioned for accuracy, very fresh and fine (S.G. £3'000 for n.h.).
- 10509** * S.G. 266 **800 - 1'200**
1902 £1 Green, mint OG example from the lower right corner of the sheet, mounted in the margin, some creasing/wrinkling not affecting the fresh and fine appearance.



10510



10511

10510

*

S.G. 266

300 - 400

1902 £1 dull blue green, mint large part o.g., a fresh and well centred example (S.G. £2'000).

10511

* S

S.G. 266s

500 - 600

1902 £1 Green, overprinted "SPECIMEN" (horse shoe type 17) mint OG, a couple of short perfs and tone spots at lower right, scarce (S.G. £1'400).



10512



10513

10512

* S

S.G. 266s

300 - 400

1902 £1 Green, overprinted "SPECIMEN" (type 16) mint o.g., fine (S.G. £1'400).

1911 Harrison & Sons Issues

10513

** S

S.G. 277s

100 - 120

1911 3d purple on lemon marginal example from the right of the sheet, overprinted "SPECIMEN" (type 22), mint n.h. (mounted in the selvedge only), fine and scarce; cert. RPS (2000); ex NPM archive.

1911-13 Somerset House Issues



10514

* S

S.G. 296s

1'000 - 1'500

1911 6d bright magenta on chalk surfaced paper, overprinted "SPECIMEN" (type 22), large part o.g., fine and very rare; cert. RPS (1944) (S.G. £4'500).

Through our different partnerships, we can also assist you to sell and buy

Other Collectibles

If you or someone you know wish to sell coins and banknotes, old books and manuscripts, Olympic memorabilia, watches and jewellery, classic cars, etc., please contact us at info@davidfeldman.com





10515



10516

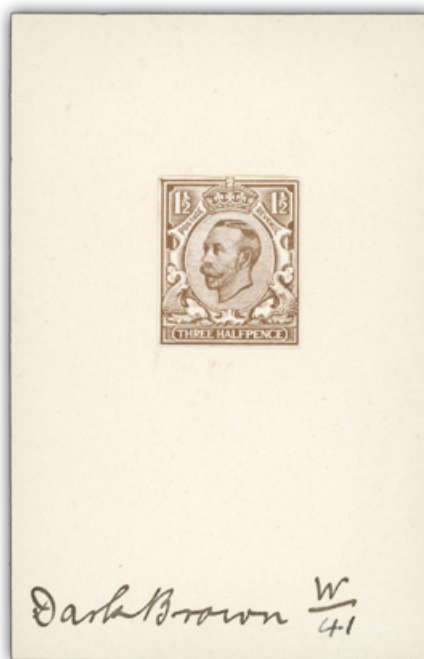


10517

- | | | | |
|--|--------|---------------|------------------|
| 10515 | ** * S | S.G. 305s | 100 - 120 |
| 1920 7d. slate-grey from the foot of the sheet, overprinted "SPECIMEN" (type 26), mint NH (mounted in the margin); fine and very rare (S.G. £350). | | | |
| 10516 | * S | S.G. 305s var | 100 - 120 |
| 1912 7d. pale-grey, overprinted "SPECIMEN" (italic type possibly used in Rhodesia), large part o.g., very scarce. | | | |
| 10517 | * | S.G. 305t | 100 - 120 |
| 1911-13 7d slate-grey overprinted "CANCELLED" (type 25), ex NPM archive sales, large part o.g., fine. | | | |



10518



10519

- | | | | |
|--|-----|--------------|------------------|
| 10518 | * S | S.G. 309 var | 100 - 150 |
| 1911 10d. dull purple and carmine from the lower left corner of the sheet, overprinted "SPECIMEN" (type 22), large part OG, very fresh and attractive. Scarce. | | | |

King George V

1911-12 Downey Head Issues

- | | | | |
|--|---|--|------------------|
| 10519 | P | | 240 - 300 |
| 1911 1 1/2d Engravers sketch die (die 2 head), cut close example printed in dark brown on thin card and mounted on thick card (57x81mm) showing ink manuscript "Dark Brown W/41", very fine, most attractive and rare. | | | |



10520



10521



10523

10520

P

400 - 500

1911 2d Engravers Sketch Die for the unissued value, die I head, printed in black on glazed proof paper (62x76mm) with uncleared surround and without value, very fine and rare (S.G. Spec. fig.20).

10521

P

600 - 800

1911 2d engravers sketch die for unissued value fully cleared die proof in black on thick white proofing paper (50x59mm), very scarce.



10522



10524

10522

P

120 - 180

1911 5d Engravers sketch stamp size die (die 2 head), cut close to shape, used as a colour trial and printed in light blue on thick white paper, very rare (S.G. £4'500).

10523

P

100 - 150

1911 7d. Henschel second proof colour trial essay endorsed "Grey" min manuscript below. Scarce.

10524

P

S.G. 342var

150 - 200

1911 1d scarlet (die 2) colour trial in vermillion on gummed watermarked paper, very fine and scarce, offered with a normal for comparison.

1912-24 Profile Head Issues



10525

P

200 - 300

1912 Profile Head master die proof, stage 4, for the 1d and 2 1/2d values, printed in black on white proof paper (73x68mm), scarce.



10526



10527

10526

* P

S.G. 351 var

400 - 500

1913 1/2d light green, ink fastness trial by Harrison and Sons, large part o.g., the reverse with printers reference ink manuscript "2188 No. 3", rare.

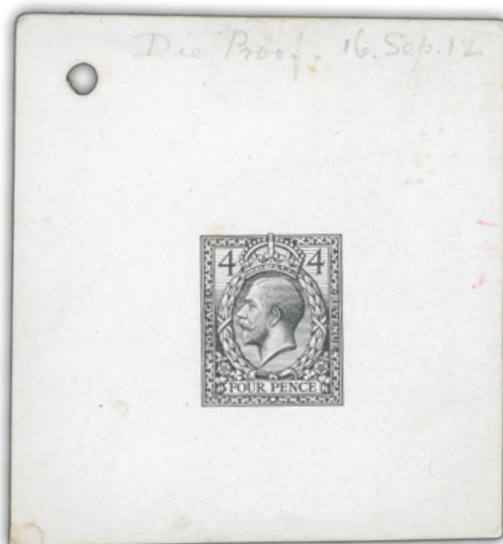
10527

** 田

S.G. 351 var

1'500 - 2'000

1913 1/2d yellow green mint n.h. imperforate block of four colour trials from the upper right of the pane, some minor soiling and gum creasing not detracting from this rare trial; cert. BPA (1994).



10528



10529

10528

P

S.G. 378 var

300 - 400

1912 4d Eve's Wreath Design die proof in black from the "Lewis" engraved die with fully cleared surround (see fig.28 in the S.G. GB Specialised vol.2) on white card (65x69mm), endorsed at top "Die Proof 16. Sep. 1912", archive punch hole at top left, corner fault at lower left, rare.

10529

P

S.G. 381 var

400 - 600

1913 5d Die proof in black on thin white glazed card (71x78mm), cleared surround, dated in manuscript at lower left "2.5.13", rare.

10530

P / 18

S.G. 381 var

200 - 300

1912 5d Eve's Wreath Design bromide in black and mounted on white card (68 x 60mm) pencilled in manuscript on reverse "2-7-12", scarce.



10531



10532



10533

10531

E

S.G. 390 var

80 - 100

1912 8d. trial of Eve's pillar design (22mm, medal head) printed in black on thin white card, with a background of graduated shaded lines behind head. Scarce.

10532

** P

S.G. 390 var

500 - 600

1913 8d black on yellow, marginal imperforate imprimatur from the left of the sheet, superb mint n.h., with "BPMA" handstamp on reverse. Scarce.

10533

P

S.G. 390 var

300 - 400

1912 8d Trial of Eve's wreath design die proof in black on white glazed card (38x42mm), slight thin, fine and scarce (See S.G. Spec. vol.2 p.127).

1913-19 Seahorse Issues

10534

*** *

1'000 - 1'500

1913-1918 mint selection of various values from the different printings (7) comprising 2s6d (3, one marginal), 5s (3), 10s (1 marginal), generally very fresh and fine.



10535



10536

10535

* S

S.G. 403s

500 - 600

1913 Waterlow £1 green, overprinted "SPECIMEN" type 26, large part o.g.; a fresh and fine example (S.G. £3'000).

10536

**

S.G. 406

200 - 300

1915 De La Rue 2s6d sepia brown mint n.h. marginal example from the top to left corner of the sheet (mounted in the margin only), fine and scarce (S.G. £550+ for mint n.h.).



10537

**

S.G. 406wj

600 - 800

1915 De La Rue 2s6d yellow brown variety watermark reversed a superb in mint n.h. horizontal pair from the left of the sheet, perfectly centred, a lovely example of this scarce watermark variety.



10538

** 田

S.G. 408 var

1'500 - 1'800

1915 De La Rue 2s6d blackish brown block of four, mint n.h. bearing the usual brownish gum, a very fresh and attractive example of this difficult shade (S.G. Spec N64 (14)).



10539



10540

10539

*

S.G. 408wj

300 - 400

1915 De La Rue 2s6d sepia brown, **watermark reversed**, large part o.g.; fine mint, scarce (S.G. £950).

10540

**

S.G. 409

240 - 300

1915 De La Rue 5s bright carmine mint n.h., very fresh and well centred, scarce (S.G. £1'100 for mint n.h.).



10541

**

S.G. 413

1'200 - 1'600

1915 De La Rue 10s pale blue, a very fresh and well centred mint n.h. example, scarce so fine (S.G. £4'500).



10542

*

S.G. 413

1'000 - 1'500

1915 De La Rue 10s pale blue, mint large part o.g., fresh and attractive; cert. RPS (1986) (S.G. £3'750).



10543



10546

10543

** S

S.G. 413a var

240 - 300

1921 Bradbury Wilkinson Seahorse 2s6d olive brown mint n.h. marginal example from the right of the sheet overprinted "CANCELLED" type 33, superb and scarce; cert. RPS (2012) (S.G. Spec N65 (1) zd).



10544

** * 田 S

S.G. 414 var

1'000 - 1'500

1918-19 Bradbury Wilkinson 2s6d chocolate brown overprinted "CANCELLED" type 33 in marginal block of four from the right of the sheet, very fresh and well centred, with stamps n.h., cert. Holcombe (1995) (S.G. Spec N65(3)zd).

Bidding Steps

All bids in British pounds (GBP)

50-100	→ 5	500-1000	→ 50	10'000-20'000	→ 1'000
100-200	→ 10	1'000-2'000	→ 100	20'000-50'000	→ 2'000
200-500	→ 20	2'000-5'000	→ 200	50'000-100'000	→ 5'000
		5'000-10'000	→ 500	100'000-200'000	→ 10'000

Bids between these steps will be adjusted accordingly to the next higher bid step.
The bidder is bound by his/her offer until a higher bid has been validly accepted.



10545

** 田

S.G. 415-417

2'000 - 2'500

1918 Bradbury Wilkinson 2s6d to 10s in beautifully fresh mint n.h. blocks of four, well centred, very fine (S.G. £6'600 as mint n.h. singles).

10546

** P

S.G. 416 var

400 - 600

1920 5s rose-red, 23mm high, from the Royal cypher paper trials, mint n.h. with "CANCELLED" type 24 overprint, very fine and scarce (see S.G. Spec. vol.2 p.205).

1924-36 Issues

10547

40 - 50

1924 British Empire Exhibition bronze plaque, 50x77mm, by E. Carter Preston, showing enthroned Britannia right receiving assembly of Dominions, very fine.



10548

** * 田 S

S.G. 418 var

1'000 - 1'500

1924 1/2d green overprinted "SPECIMEN" type 32 in mint block of four (only one stamp showing the merest trace of hinge), very rare and most likely unique as a block (S.G. Spec N33ua).



10549



10550

10549

* S

S.G. 438s

500 - 600

1929 PUC £1 black, overprinted SPECIMEN in red (type 32), large part o.g. (toned); scarce (S.G. £3'000).

10550

*

S.G. 438

250 - 300

1929 PUC £1 Black, fine mint o.g., very lightly mounted, from the lower left corner of the sheet; scarce (S.G. £750).



10551

** 田 P

S.G. 439 var

4'000 - 5'000

1934-35 Harrison 1/2d green mint n.h. top marginal pair of tête-bêche booklet panes of six imperforate imprimaturs, with "BPMA" handstamp on reverse, some gum wrinkling as prevalent throughout the sheets, extremely rare in this format.

The currency of the auction is the British pound.





10552



10553

- 10552** E S.G. 441 var **400 - 500**
 1934 1 1/2d Photogravure vertical pair of essays printed by Harrison & Sons in green on "Harrison" script gummed watermarked paper, mounted on a small piece of cream card. A very attractive and rare unadopted essay.
- 10553** ** P S.G. 441 var **240 - 300**
 1934 1 1/2d Royal blue "Photogravure" pair of imperf. colour trials from the upper right of the sheet, mint n.h., printed on unwatermarked paper, most attractive.

King George VI

- 10554** **70 - 100**
 Three medals, with one 1935 celebrating King George V's Silver Jubilee, 1936 commemorating King Edward VIII's abdication and 1937 celebrating King George VI's coronation, an attractive trio.



10555



10556



10557

- 10555** ** P S.G. 463 var **900 - 1'200**
 1937-47, 1d scarlet imperf. imprimatur tête-bêche gutter pair, mint n.h., with NPM handstamp on reverse, very fine and very rare, ex *NPM archives*.
- 10556** ** P S.G. 466 var **400 - 600**
 1937-47 2 1/2d ultramarine imperf. imprimatur pair, mint n.h., reverse with N.P.M. handstamp, very fine and rare.
- 10557** ** P S.G. 486a var **600 - 800**
 1941-42 1d pale scarlet (pale colours), superb mint n.h. imperforate imprimatur horizontal pair, "BPMA" handstamp on reverse, scarce.
- 10558** **600 - 800**
 1947 "CONGRES POSTAL UNIVERSEL PARIS 1947/ TIMBRES-POSTE BRITANNIQUES", A red leatherette and gold tooled album including photographs of the inception of stamps and also showing "current stamps" to 10/- and postal stationery items mounted on pages; scarce so fine and intact.



10559

** P

S.G. 503-508 var

3'000 - 4'000

1950-52 1/2d to 4d definitives (New colours), a superb mint n.h. set of six imperforate imprimaturs with "NPM IMPRIMATUR" hand stamp on reverse; very rare with **only six sets** released for the NPM Archive sales.



10560



10561

10560

** P

S.G. 503wi-507wi var

800 - 1'000

1950-52, New Colours 1/2d to 2 1/2d set of five imperf. imprimaturs, wmk inverted, each with BPMA handstamps on reverse (except 1/2d), very fine and rare.

10561

** P

S.G. 513-514 var

700 - 1'000

1951 Festival of Britain set of two imperforate imprimaturs from the left of the sheet, mint n.h. with BPMA handstamps on reverse, very fine.

Queen Elizabeth II



10562



10563

10562

** P

S.G. 517/19a var

600 - 800

1952-53 Wildings 1 1/2d to 2 1/2d set of three marginal imperforate imprimaturs from the foot of the sheet from the sideways coil printing, with "BPMA" handstamp on reverse, rare.

10563

** P

S.G. 541a var

600 - 800

1955 Wilding 1d ultramarine imperforate top marginal booklet pane of three stamps with printed labels underneath each one, superb mint n.h., with "BPMA" handstamp on reverse, rare.



10564



10565



10566

- 10564** 田 (*) P S.G. 573 var **150 - 200**
 1958 2d. light red brown (crisp print) "Dollis Hill Phosphor Trial" very fine perforated block of four on ungummed, unwatermarked Specially prepared handmade paper, without phosphor; rare.
- 10565** (*) P S.G. 573 var **100 - 150**
 1958 Wildings 2d red brown "Dollis Hill Phosphor trial" horizontal pair on un-gummed un-watermarked specially prepared hand made paper, with all over green phosphor showing a strong reaction, scarce (S.G. Spec. ST4 (3)a).
- 10566** ** P S.G. 575 var **240 - 300**
 1959 3d deep violet "Dollis Hill Phosphor Trial", mint n.h. perforated block of six on gummed watermarked paper, with two 3mm blue phosphor bands printed over the ink, very fine and scarce.



10567



10568

- 10567** (*) P S.G. 575 var **150 - 200**
 1958 3d deep violet "Dollis Hill Phosphor Trial" perforated horizontal strip of three on ungummed unwatermarked specially prepared hand made paper, with all over blue phosphor showing a strong phosphor reaction, scarce.
- 10568** ** 田 S.G. 575 var **120 - 180**
 1959 Wildings 3d deep violet "Dollis Hill Phosphor Trial" perforated block of four on gummed crowns wmk (sideways left) paper, with one 4mm blue phosphor left side band printed over the ink, very fine and scarce (S.G. Spec ST7(3)f).

Find the bid form on the last page of this catalogue.



10569

** P

S.G. 634-635 var

400 - 500

1963 Freedom from Hunger 2 1/2d and 1/3d imperforate imprimaturs, mint n.h., the reverse showing "NPM IMPRIMATUR" handstamps, very fine and scarce.



10570

10571ex

10570

** P

S.G. 661p-662p var

400 - 500

1963 Churchill 4d. and 1s3d imperforate imprimaturs, mint n.h., reverse showing "NPM IMPRIMATUR" handstamps; very fine and scarce.

10571

** P

S.G. 651-654 var

600 - 800

1964 20th International Geographical conference set of four imperforate imprimaturs with "NPM IMPRIMATUR" handstamp on reverse, mint n.h., very rare, **one of 10 sets released for the NPM archive sales.**



10572

10573

10572

** P

S.G. 677p var

600 - 800

1966 9d Battle of Britain imperforate imprimatur corner marginal traffic light vertical strip of three from the lower right of the sheet, mint n.h., each stamp with BPMA handstamp on reverse, very fine and **unique positional item.**

10573

** 田

S.G. 678 var

1'200 - 1'500

1966 1/3d Battle of Britain, the unique cylinder block of six imperf. imprimaturs from the lower left corner of the sheet, mint n.h., each with "BPMA" handstamp on reverse. Rare.

10574

** 田

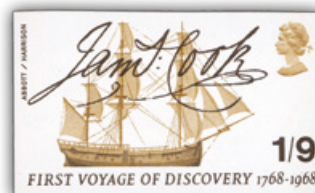
S.G. 763a, 764 var

100 - 150

1967 British Bridges group of varieties incl. 4d mint n.h. left block of eight printed on gummed side of paper error, 9d mint n.h. right marginal block of nine with dramatic doctor blade flaw, 9d mint n.h. block of four showing the downward shift of the gold (Queen's head) and 1s6d showing a minor constant flaw R19/1 in mint n.h. lower corner pair.



10575ex



10576ex

10575

** P

S.G. 763-766var

800 - 1'000

1968 British Bridges set of four imperforate imprimaturs from the right of the sheet, mint n.h., each with "BPMA" handstamp on reverse, very fine and scarce.

10576

** P

S.G. 767-70 var

700 - 1'000

1968 British Anniversaries set of mint n.h. imperforate imprimaturs from the original NPM sales, very rare with only 10 sets released.



10577ex



10578

10577

** P

S.G. 775 var

500 - 600

1968 4d Christmas imperforate horizontal pair of imprimaturs, mint n.h., showing variety "Retouched dapples" in position R12/4, each with BPMA handstamp on reverse, superb and **unique** (S.G. Spec. W142f var).

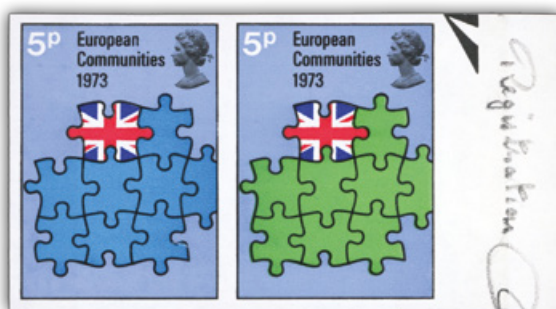
10578

**

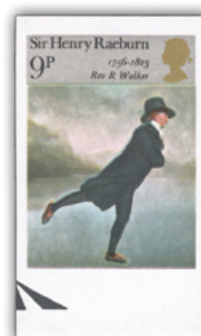
S.G. 801a

300 - 400

1969 1s6d British Cathedrals, variety **face value omitted**, mint n.h., very scarce as Pierron records only 42 examples, many of which are damaged (S.G. £1'500).



10579ex



10580ex

10579

** P

S.G. 919-921 var

500 - 700

1973 European Communities set of three imperf. imprimaturs from the right of the sheet (the 5p in set-tenant pair), mint n.h., each with "BPMA" handstamps on reverse, very fine and scarce.

10580

** P

S.G. 931-934 var

600 - 800

1973 British Paintings set of four mint n.h. imperforate imprimaturs from the foot of the sheet, each with "BPMA" handstamp on reverse, very fine and scarce.

10581

**

S.G. 935a var

80 - 120

1973 Inigo Jones set of mint n.h. se-tenant pairs with variety **phosphor omitted** (shows as a white background rather than a cream background), offered with normals for comparison (S.G. Spec. W225/6b).



10582



10583

10582

** P

S.G. 961var

240 - 300

1974 10p Medieval Warriors imperforate imprimatur in mint n.h. right hand marginal vertical gutter pair, each with "BPMA" handstamp on reverse, scarce.

10583

** 田 P

S.G. 963 var

600 - 800

1974 Winston Churchill 5 1/2p imperf. imprimatur in mint n.h. traffic light corner block of four, each with "BPMA" handstamp on reverse, very fine and scarce.

10584

** 田

S.G. 1001

100 - 150

1976 Social Reformers group of varieties, incl. 8 1/2p mint n.h. single with dramatic downward colour shift showing value above Queen's head, also a downward shift of the shading of the hands in mint n.h. single and block of four, and the mint n.h. 10p lower marginal misperforated.



10585

* P

5'000 - 7'000

1978 Christmas UNISSUED 5p, hinged on original Post Office presentation card with gilt logo at top along with the other four issued values, mint o.g., very fine and **extremely rare with only two examples recorded**.

Note: The Post Office management asked the Union if they would agree to a special 5p stamp, just for Christmas. There had been a lot of workers disputes around that time and for whatever reason, the Union refused. They were told that nothing had been done, it was just a suggestion. Unbeknown to them the stamp had already not only been designed and but the die had been produced, and two actual stamps had been made. Had the Union been aware that they were in fact not having a suggestion made to them, but in essence the decision had already been made, it could easily have caused a Christmas strike.



10586

10586

**

1979 10p Christmas imperf. horizontal pair from the left of the sheet showing sheet number, mint n.h., very fine and scarce variety (S.G. £500).



10588

S.G. 1105b

150 - 200



10587

**

S.G. MS1501a

2'400 - 3'000

1990 Stamp World London miniature sheet imperforate, mint n.h., post office fresh, very rare as Pierron records only 6 mint examples, a great stamp thematic item featuring the penny black (unpriced by S.G.).

10588

**

S.G. 2043 var

400 - 600

1998 30p Joyce Grenfell **error of value 30 for 37p** mint n.h., rare and post office fresh, offered with the normal for comparison (S.G. £1'800).



10589

**

S.G. 2187aa

5'000 - 6'000

2001 Cats and Dogs (Self Adhesive) sheetlet of ten, **variety Imperforate**, still in its original presentation pack, an incredibly rare variety of which **only three are believed to have been found**; unpriced in S.G. catalogue.

Lot n°	Symbol(s) / Photo page	Cat. n°	Estimate (£)
10590	** / View the image(s) online	S.G. 2207ab	500 - 700
	2001 Submarines 1st class self-adhesive "Swiftsure" imperforate se-tenant booklet pane with cylinder markings in the selvage, couple of minor bends, fine and rare, Pierron records only ca.9 mint booklets, only two of which show the cylinders (S.G. £3'000).		
10591	** 田 Collection		200 - 300
	1965-70, group of commemorative errors and varieties incl. 1965 Battle of Britain group of four colour shifts (one with dramatic shift), 1965 UN 3d traffic light block with double perforation and matching ordinary and phosphor blocks of four showing constant "lake in Russia" variety, 1966 Landscapes 6d with almost completely omitted black and 6d with retouched with misaligned D, 1969 4d Christmas strip of three with phosphor variety, 1970 1s6d with emerald omitted (tone spots), 1970 Literary 1s6d with silver omitted and 1970 Christmas 5d vert. strip showing paper join.		
10592	** 田 Collection		150 - 200
	1971-91, mint group of Machins errors and varieties incl. 1971 10p with orange-brown omitted (S.G. X885a £140, some slight gum disturbance), 1975 8 1/2p block of 10 with blade flaw, 1977 High Value £1 mint n.h. partial imperforate horizontal pair, 1977 3p significantly misperfed and 1991 24p top marginal imperf. pair (S.G. X969a £225), very fine group.		
10593	** 田 Collection		200 - 300
	1978-94, mint group of commemorative errors and varieties, incl. 1978 Coronation 13p imperf pair with shifted gold (rare with just 30 examples known), 1979 Wild Flowers 9p partially imperforate strip of three (one stamp complete imperf.) and 9p block of four with shifted silver, 1984 Cattle 28p traffic light block of six showing paper join, 1984 Mail Coach 16p group showing two plate flaws and a doctor blade flaw, 1986 RAF showing dry print of value in strip of three, 1994 Christmas 19p imperf pair (S.G. £95).		

Regionals - Scotland



10594	** P	S.G. S20var	300 - 400
	1971 5p reddish-violet imperforate imprimatus in mint n.h. horizontal pair from the left of the sheet, B.P.M.A. handstamp on reverse, very fine and scarce.		

Officials



10595



10596

10595	*	S.G. O3 var	1'000 - 1'500
	Inland Revenue: 1882 1d lilac I.R. Official, variety imperforate , large balanced margins all round, large part o.g., very rare; cert. RPS (1981).		
10596	◎	S.G. O10	1'200 - 1'500
	Inland Revenue: 1890 10s ultramarine I.R. Official with very neat Dundee DE 31 01 cds, very fine (S.G. £3'750).		

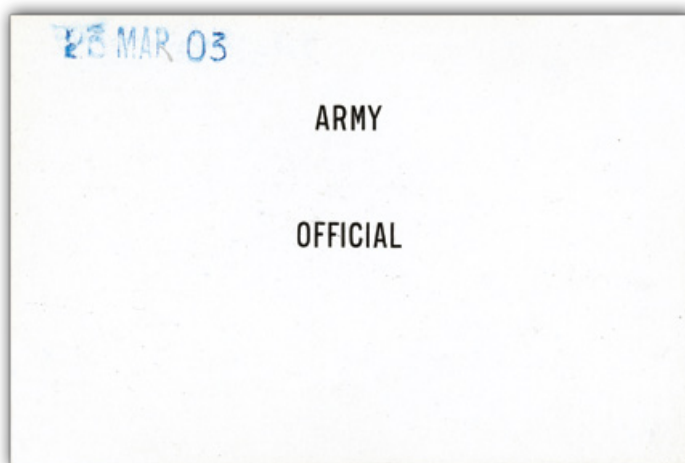
The largest known Multiple of this major rarity



10597

S.G. 027 80'000 - 100'000

Inland Revenue: 1902 £1 dull blue-green I.R. Official, a magnificent mint marginal block of four from the left of the sheet, virtually full original gum (slight encroachment of the hinge strengtheners from the selvage); a major exhibition showpiece of the highest calibre and the largest known multiple of this super rare high value, the next largest being a vertical pair which adjoins this block. Cert B.P.A. (1993) and Cert. Holcombe (1992). Ex Robson Lowe sale (Geneva 1976) where it was part of an original archival find.



10598

P

2'000 - 3'000

Army Official: 1903 De La Rue die proof of the Army Official overprint (Type 2) in black on glazed card (92x60mm), endorsed 23 Mar 03 in blue, a superb and incredibly rare die proof (S.G. £9'000).

By 1903 the existing overprint plate (forme 2) had become very worn, so a new plate (forme 4) was made from a fresh die. After the 6d. issue the overprint was withdrawn, the existing overprint (Type 1) showed a Larger "M".



10599

* E

2'400 - 3'000

Government Parcels: 1883 3d on 3d lilac with "GOVERNMENT / PARCELS" essay overprint type B in red, mint o.g., two lightly toned perfs at foot, very fine and very rare, **only six examples produced**; cert. BPA (1947).



10600

⊙

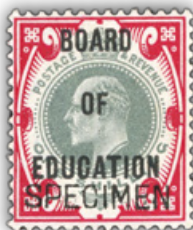
S.G. 072a

3'400 - 4'000

Government Parcels: 1900 1s green & carmine with **inverted overprint**, used with the typical Mount Pleasant roller obliteration, very fine and very rare, with only 12 examples recorded of which at least five are damaged, cert. RPS (1958) (S.G. £15'000).

Please ensure your bids arrive on time!

In the case of equal bids, the first bid received will take precedence.



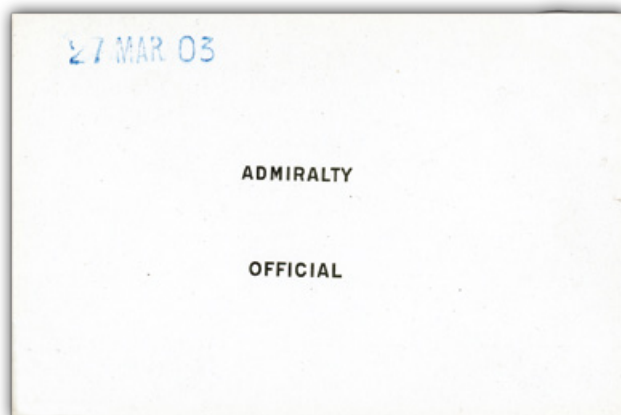
10601

* S

S.G. 087s

8'000 - 10'000

Board of Education: 1902 1s green and carmine overprinted "SPECIMEN" type 16, lightly mounted mint, a fabulous example of this very rare departmental issue in exceptional quality; cert. BPA (1981) (S.G. £30'000).



10602

P

2'000 - 3'000

Admiralty Official: 1903 De La Rue die proof of the Admiralty Official overprint (Type 2) in black on glazed card (92x60mm), endorsed 27 Mar 03 in blue, a superb and incredibly rare die proof (S.G. £9'000).

By 1903 the existing overprint electro was damaged so a new die was called for, the existing overprint (Type 1) showed a larger "M".

Postage Dues



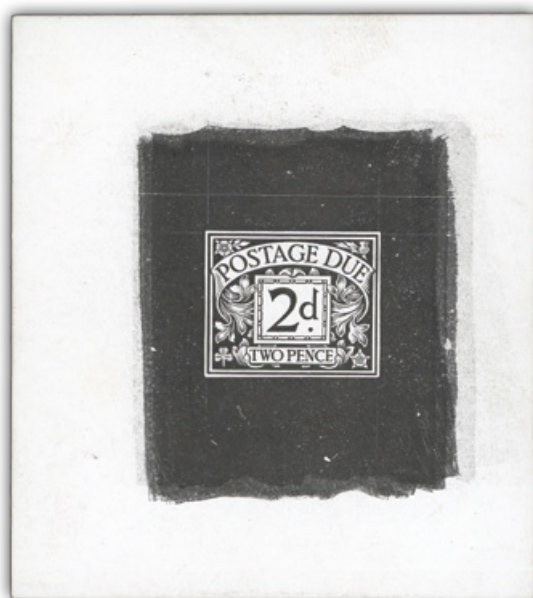
10603

** * 田

S.G. D2 var

500 - 700

1914 1d carmine mint block of eight from the lower right corner of the pane showing watermark **variety "POSTAGE" inverted** on the bottom row and a second "POSTAGE" upright in the sheet margin at foot, only three stamps mounted in the top row, a very rare watermark variety, cert. RPS (2013) (S.G. Spec. R2c).



10604

P

S.G. D4 var

800 - 1'000

1914 2d Postage Due die proof in black on glazed card (68 x 78mm), numbered 123 on reverse, very scarce.



10605



10606



10607

10605

** P

S.G. D8 var

400 - 500

1915 1s bright blue "Postage Due" horizontal pair of imperforate imprimaturs from the foot of the sheet, mint NH, the reverse with BPMA handstamps; some light gum wrinkling as was prevalent across the whole sheet. Scarce.

10606

** 田 P

S.G. D20var

600 - 800

1936-37 1d red imperf. imprimatur block of four from the top of the sheet, mint n.h., the reverse stamped "NPM IMPRIMATUR", very rare with this block containing four of the six examples released from the NPM archive sale.

10607

** 田 P

S.G. D24 var

600 - 800

1936-37 5d yellow-brown imperf. imprimatur in mint n.h. block of four from the top of the sheet, the reverse stamped "NPM IMPRIMATUR", very rare with this block containing four of the six examples released from the NPM archive sale.



10608

** 田 P

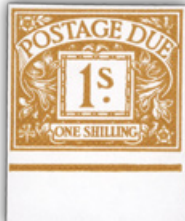
S.G. D26var

400 - 600

1936-37 2s6d purple on yellow imperf. imprimatur in mint n.h. block of four from the top of the sheet, the reverse stamped "NPM IMPRIMATUR", very rare with this block containing four of the six examples released from the NPM archive sale.



10609



10610ex

10609

** P

S.G. D56 var

400 - 600

1959-63 1/2d orange on whiter paper imperf. imprimatur pair from the top of the sheet, mint n.h., each with BPMA handstamp on reverse, very fine and scarce.

10610

** P

S.G. D69-74 var, D76 var

400 - 600

1968-69 2d, 3d, 4d, 5d, 6d, 8d and 1s Postage Due imperf. imprimaturs, mint n.h. lower marginals with "NPM IMPRIMATUR" handstamps on reverse, very fine and very rare.

Bidding Steps

All bids in British pounds (GBP)

50-100	→ 5	500-1000	→ 50	10'000-20'000	→ 1'000
100-200	→ 10	1'000-2'000	→ 100	20'000-50'000	→ 2'000
200-500	→ 20	2'000-5'000	→ 200	50'000-100'000	→ 5'000
		5'000-10'000	→ 500	100'000-200'000	→ 10'000

Bids between these steps will be adjusted accordingly to the next higher bid step.
The bidder is bound by his/her offer until a higher bid has been validly accepted.

Telegraphs

The most Important piece of the telegraph issues



10611

P S

20'000 - 30'000

1881 (19 Jan.) a magnificent day book archive page bearing imperforate examples in the selected colours of the 4d. 6d., 3/-, 10/-, £1 except the £5 which is in blue, each overprinted "SPECIMEN" (Type 8) with text at top "Specimens of the New Telegraph Stamps/ In all cases, except the £5 duty, the selected colour is the one shown. In the case of the £5 duty the colour is to be vermilion" (Later printed in orange) with "Vermillion" written above the £5, and "approved" alongside; a major exhibition showpiece of the highest calibre. **Unique in private hands.**



10612

* S

S.G. T17s

200 - 300

1877 £1 brown-lilac, CM, overprinted "SPECIMEN" (type 9), large part o.g., a fresh and attractive example (S.G. £900).



10613

* P

S.G. T18 var

1'000 - 1'500

1877 £5 De La Rue die proof in black on glazed card (90x60mm), very rare.



10614



10615

10614

* S

S.G. T18 var

500 - 600

1877 £5 imperforate colour trial in blue, BF, overprinted "SPECIMEN" (type 8), large part o.g., a lovely fresh and attractive example.

10615

* S

S.G. T18s

500 - 600

1877 £5 orange, AI, overprinted "SPECIMEN" (type 9), large part o.g., a lovely fresh and attractive example (S.G. £2'800).

Collections

10616

©

4'000 - 5'000

1840-1970s, A mint & used collection in three well filled red Favourite Philatelic albums, scarcer stamps including though not limited to 1840 1d black (6), 1840 2d blue (3), 1858-64 set of plate numbers to 225 (less 77), a good range of fine used surface printed issues including 1867-80 2s milky blue, a mint selection of Jubilee issues to £1 and also including 5d Board of Education mint (though not certified so cannot be guaranteed as genuine), second album with GB to 1951 plus Channel islands & IOM, and third album with QEII incl. definitives, postage dues, etc., generally fine throughout with viewing essential.

Lot n°	Symbol(s) / Photo page	Cat. n°	Estimate (£)
10617	** * 田		5'000 - 6'000
	1881-1940s, A fantastic and very comprehensive collection of mint controls contained in two albums, many hundreds with many mint n.h., including singles, blocks, vertical strips, horizontal strips, especially well represented in the "Kings" section with many different shades present though not identified; a superb lot for the enthusiast which would be difficult to replicate, clearly put together of several decades and this the first time of being on the open market; fine and rare.		
10618	*		1'000 - 1'500
	1887-1910 mint collection on stock pages of the Jubilee issue with values to 1/- and KEVII issue with values to 1/- including 4d. overprinted cancelled ex NPM archive sales, 1 1/2d. block of 8 a few control 1/2d. and 1d. pieces and 1/2d. stamp size die proof in black on glazed card affixed to striking book piece, a generally very fresh and attractive lot.		
10619	*		800 - 1'000
	1901-10 predominantly mint selection of values through to 10/- including £1 forgery, a small selection of controls, generally fresh mint.		
10620	** *		3'000 - 4'000
	1902-11 A superb KEVII mint collection of the S.G. specialised catalogue shades, virtually complete from 1/2d to 10s neatly written up on album leaves and annotated from M1 to 47 in order of the catalogue, a fine assembly with many stamps unmounted and displaying lovely fresh colour. Viewing essential.		
10621	⊙		800 - 1'000
	1902-11 A superb KEVII used collection of the S.G. specialised catalogue shades, with values from 1/2d to £1 neatly written up on album leaves with the shades present annotated in order of the catalogue, a fine assembly with many stamps with fine cds cancels and generally displaying good fresh colour. Viewing essential.		
10622	*		2'500 - 3'000
	1911-1951 predominantly mint selection on Hagner leaves, with a good range of controls, a selection of inverted watermarks, perforation errors, some better shades a few benefitting from certs., a small selection of Seahorses including 2s6d plate proof pair. A good lot worth careful viewing.		
10623	** *		8'000 - 10'000
	1912-1929 A fabulous and valuable KGV mint collection of the specialised shades from the Downey Head 1/2d through to 1929 PUC £1 neatly written up and annotated as per the specialised catalogue, largely complete and all collected during the mid 70s to the mid 80s and many shades benefitting from RPS certificates of that time, condition good to very fine with many extremely fresh examples and collected for quality; generally lightly mounted mint, a wonderful study with room for expansion, viewing essential.		
10624	⊙		1'000 - 1'500
	1912-1929 KGV used collection of shades neatly written up on leaves annotated by the owner, 1912-22 issues through to 1/- with a good range of shades and 1929 PUC set to £1; generally fine.		
10625	* ⊙		5'000 - 6'000
	1913-34 A fabulous predominately mint (all with large part o.g.) collection of the specialised listed shades (identified by the owner), neatly written up on album pages, virtually all examples with good perfs and centring and displaying lovely rich fresh colour, including Waterlow with 2s6d imperf. colour trial, 2s6d deep sepia brown, 5s rose carmine, 10s indigo and £1 (used), De La Rue with a good range of shades including 2s6d deep yellow brown and blackish brown (from the lower right corner, 5s bright carmine and carmine, Bradbury Wilkinson 2s6d (5 shades), 5s carmine rose and rose red and re-engraved set to 10s also a used selection, a fine group with viewing essential and in the absence of certificates shades are not guaranteed correct.		
10626	* S Collection		1'000 - 1'200
	1911-1929 a fine selection of KGV values overprinted "Specimen" or "Cancelled" with values from 1/2d to 1s including imperf. and sample watermark paper, generally fresh and fine unused; with viewing recommended.		

Symbols and Condition

Symboles et Condition / Symbole und Erhaltung

Symbols / Symboles / Symbole

*	mint with original gum <i>neuf avec gomme / ungebraucht mit Falz</i>
**	mint never hinged <i>neuf avec gomme intacte / postfrisch</i>
(*)	unused, ungummed or regummed <i>neuf sans gomme ou regommé / ungebraucht ohne Gummi oder nachgummiert</i>
⊙	used <i>oblitéré/ gebraucht</i>
田	block of four or larger <i>multiple / Viererblock</i>
ㄣ	tête-bêche pair <i>paire tête-bêche / Kehrdruckpaar</i>
⊗	fiscal cancel <i>oblitération fiscale / fiskalische Entwertung</i>
△	piece or fragment of a cover or document <i>fragment / Briefstück</i>
✉	cover or postcard incl. postal stationery <i>lettre, carte postale ou entier / Brief, Postkarte oder Ganzsache</i>
E	essay <i>essai / Entwurf</i>
P	proof (incl. die, plate or trial colour) <i>épreuve / Probedruck</i>
R	revenue or fiscal <i>timbre fiscal / Gebührenmarken</i>
S	specimen <i>spécimen / Specimen</i>
F	forgery <i>faux / Fälschung</i>

Condition of Covers / Condition des lettres et entiers / Erhaltung von Briefen

Extremely fine / Superbe / Prachterhaltung

Outstanding, the envelope with only slight wear, fresh stamp and cancel. / *Qualité irréprochable, l'enveloppe ne présente que de très légères traces d'usure, le timbre est frais et l'oblitération est propre.* / Herausragende Qualität, Brief mit minimalen Gebrauchsspuren (Archivqualität), frische Marken und sehr klarer Stempel.

Very fine / Très beau / Sehr schön

Choice condition, the envelope shows typical slight soiling or wear from usage. / *Qualité premier choix, l'enveloppe peu néanmoins présenter quelques légères salissures et usures.* / 1. Wahl, Brief zeigt nur typische leichte Gebrauchsspuren.

Fine to very fine / Beau à très beau / Schön bis sehr schön

Normal condition, the envelope shows a bit heavier wear or soiling. / *Qualité standard, les traces d'usures sont un peu plus prononcées.* / Gewöhnliche aber noch einwandfreie Erhaltung mit etwas stärkeren Gebrauchsspuren (leicht fleckig oder andere leichtere Abnutzungen).

Fine / Beau / Schön

Evident wear or other factors (see description and photo), still a presentable example. / *Evidentes traces d'usures ainsi que d'autres facteurs (voir photo et description) mais exemplaire très présentable.* / Offensichtliche Gebrauchsspuren oder andere Mängel (siehe Beschreibung und/oder photo bzw. scan) aber noch immer herzeigbare und sammelwürdige Qualität bzw. Erhaltung.

Please note: Light edge wear, top backflap faults, slight reductions at one side, and file folds are normal for 19th Century covers. Also normal are light cleaning or minor stains and small mends along the edges. They are to be expected and are not always described, and are not grounds for return, nor are factors visible in the illustrations. We will gladly provide full-size scans on request.

Prière de noter : De légères traces d'usures, défauts au rabat, de légères réductions sur un côté et des plis d'archives sont des caractéristiques normales pour des lettres du 19^{ème} siècle. De légères améliorations au niveau de la propreté ainsi qu'un éventuel ajout de quelques renforts sont également acceptables et ne figurent pas nécessairement dans les descriptions. Ces points ainsi que tous les éléments visibles au niveau de l'illustration ne peuvent par conséquent pas être sujets à réclamation. Des scans supplémentaires d'une pièce peuvent être envoyés sur simple demande.

Bitte beachten: Leichte Eckabnutzungen, Mängel der Absenderklappe, leichte Reduktionen an einer Seite und Archivierungsbügel sind als normal für Briefe des 19. Jhdts. anzusehen, ebenso gelten als «normal» leichte Reinigung, kleine (minimale) Stockflecken oder Risschen und Bügel entlang der Briefkanten - diese sind zu erwarten, zu akzeptieren und nicht immer beschrieben (zumeist aber am photo und/oder scan ersichtlich) - diese stellen daher keine Grundlage für Retournierungen dar, ebenso wie auf den photos resp. scans klar ersichtliche Faktoren - Fotos und scans sind immer auch Teil der Beschreibung Im Zweifel können Sie von uns VOR DER Auktion jederzeit Photokopien oder besser auflösende scans verlangen und werden wir Ihnen diese gerne zusenden bzw. mailen.

Consign with Us

Take advantage of the collaboration between Numisor and David Feldman SA to consign both coins and stamps to your trusted partners



numisor.ch

- 40 years of numismatic experience
- Extensive experience in volume trading of bullion related coins
- Extensive worldwide client list
- Auctions are held in association with David Feldman SA, renowned international stamp auctioneers
- We can also offer the possibility of making direct purchases

We are interested in any World, British, Persian or Egyptian coins, particularly gold or those of high quality or rarity. We can handle single pieces or indeed complete collections.

We offer consignors the ability to sell their items via our online auctions as well as at our public auctions in Geneva. Our more frequent online auctions also provide the opportunity for vendors to receive payments more quickly after consigning their items to us.

Please feel free to contact us anytime

NUMIS·OR

Rue des Barques 4
1207 Geneva
Switzerland
Tel +41 22 735 92 55
info@numisor.ch

Member of:



AMERICAN
NUMISMATIC
SOCIETY

Conditions of Sale

The currency of the auction is the British Pound (£)

Participation in any David Feldman S.A. auction means acceptance in full of the following conditions as well as any rights and obligations arising therefrom. These same conditions also apply to all transactions taking place outside the realm of the auctions. DAVID FELDMAN S.A., organiser of the auctions, acts as an agent only and is not liable in any way whatsoever for any default(s) of purchaser(s) and/or vendor(s).

1. The auction lots are offered

1.1. As presented in the relative auction catalogue and/or through the David Feldman S.A. website. Lots are meticulously described and with the greatest care, however without responsibility. Photographs count as part of the description with regard to the margins, perforation, centering, postmarks and all other visible attributes. The descriptions of the lots mention if the items are signed by recognised experts and/or accompanied by expert certificates.

1.2. As viewed in person: before and during auction sales, persons or their agents may examine lots at our offices or at the auction location, and must confirm their auction invitation before viewing. Persons or their agents attending a Live Room auction by invitation and/or who have viewed lots before an auction are understood to have examined all lots which they purchase and accept them as they are at the moment of the knocking-down and not necessarily as described.

2. Auction bids

2.1. The auction bid steps for all auctions are as follows: (some auctions may be in other currencies than British Pound)

£ 50 - 100:	£ 5	£ 2'000 - 5'000:	£ 200
£ 100 - 200:	£ 10	£ 5'000 - 10'000:	£ 500
£ 200 - 500:	£ 20	£ 10'000 - 20'000:	£ 1'000
£ 500 - 1'000:	£ 50	£ 20'000 - 50'000:	£ 2'000
£ 1'000 - 2'000:	£ 100	£ 50'000 - 100'000:	£ 5'000

Bids between these steps will be adjusted accordingly to the next highest bid step. The bidder is bound by his offer until a higher bid has been validly accepted.

2.2. DAVID FELDMAN S.A. has full discretion to refuse any bidding, to divide any lot or lots, to combine any two or more lots and to withdraw any lot or lots from the sale without in any case giving any reason. DAVID FELDMAN S.A. may also bid on behalf of vendors in cases where reserve prices have been fixed. In these cases, the vendor is treated as a buyer and the auctioneer shall bid on his behalf up to reserve prices. If the reserve price fixed by the vendor is not reached, the auctioneer passes to the next lot by a simple knock of the hammer.

2.3. Bid orders are only accepted from registered clients of DAVID FELDMAN S.A. and/or its associated companies. Live Room bidders must confirm their invitation prior to obtaining a bidding number.

2.4. Bid orders received by DAVID FELDMAN S.A. including via its website before the relative auctions have priority over room bids in the case of Live Room auctions. Clients giving bidding instructions to DAVID FELDMAN S.A. may make alternative offers and/or limit the total of their expenditure in advance. Bids marked «BUY» are considered as up to ten times the quoted estimate price where such exists. Bids made in other currencies than the advertised currency of the auction will be converted into that

currency at the market rate of the day of receipt by DAVID FELDMAN S.A. Bids are standing and hold good for at least 60 days from the auction period. DAVID FELDMAN S.A. reserves the right to invoice bidders up to the end of the 60 day period, payment being due immediately.

3. The auction

3.1. Unless explicitly stated otherwise, the currency of the auction is British Pound. Attendance at the Live Room auction is reserved for invited clients and/or their agents.

3.2. Prerogatives of David Feldman S.A.: DAVID FELDMAN S.A. may withdraw, group differently, divide or refuse to knock down any lot. DAVID FELDMAN S.A. reserves the right to refuse any bid orders and/or for Live Room auctions, refuse admittance to the auction room, at its discretion, to anybody whomsoever. DAVID FELDMAN S.A. cannot be held responsible for any physical accident that may occur on the premises where auctions take place. In the case a bone fide offer for the entire collection presented in this catalog is received at least two weeks before the auction date, and would be accepted by the vendor and the auctioneer, it may be withdrawn from sale and the auction offer cancelled.

3.3. Bidders' representatives and auction agents: any person bidding for the account of a third party is fully liable for any obligation arising from such bidding. This responsibility is notably applicable for the verification of the condition and for the payment of purchased lots.

3.4. Winning Bids: each lot is sold on behalf of the respective owner to the highest bidder who becomes the buyer at one bid step over the next highest bid step; this is the knock-down price. A buyer's premium will be added to the knock-down price per lot and is payable by the buyer as part of the total purchase price. The buyer's premium is 23% of the knock-down price; cost of postage will be invoiced separately from the buyer's premium. On the knock of the hammer, liability for the lots passes to the bidder whose bids have been accepted. The lots are delivered to the buyer when the total sale price (knock-down price plus all fees) have been paid in full.

VAT (Sales Tax) - Notes for guidance concerning auctions for which the lots are located in Switzerland: buyers domiciled abroad are not liable for this tax once the goods are duly exported from Switzerland. DAVID FELDMAN S.A. are pleased to arrange this export; alternatively, clients may make their own arrangements and furnish DAVID FELDMAN S.A. with proof of export, stamped by Swiss customs. Any purchases by buyers who wish to keep their purchases in Switzerland will be liable to VAT at 7.7% of the purchase price. It is the buyer's responsibility to pay any relevant duties that may be incurred upon import to other jurisdictions; the buyer shall be responsible for all costs of purchases that are returned to DAVID FELDMAN S.A. should they refuse to pay import duty.

3.5. Payment: Sale price plus buyer's premium and additional costs (if any) are due for immediate payment as invoiced against delivery of the lots. Payment in other currencies is accepted at the rates of exchange of the day as quoted by a major Swiss bank. The bidders who are successful with whom it has been expressly agreed that they pay after the sale under special conditions, are due to pay the sale price, buyer's premium and any other costs according to those terms. In these cases, DAVID FELDMAN S.A. keeps the relevant lots which are delivered to the buyers on full settlement of their account. Delivery of the purchased lots by post, courier or any other means if instructed by the buyer including cost of normal transit insurance cover is at the expense of the buyer.

Title or ownership of the purchased lots, delivered or not, remains with the auctioneer on behalf of the seller until payment has been made in full.

3.6. Special extended payment facility: upon request **prior to the auction**, DAVID FELDMAN S.A. may offer a special extended payment facility for buyers. In these cases, the buyer must pay a minimum of 25% of the total invoice immediately, and the balance over a maximum period of 4 months, paying an equal instalment at the end of each month. Interest charges of 2% of the remaining balance are debited to the buyer's account at the end of each month from the auction date. When the special extended payment facility has been granted, the buyer understands that any claims regarding his purchases must be made within 30 days of the auction sale date, even though the lots may be held by DAVID FELDMAN S.A. awaiting full settlement of the account. Until delivery, all lots may be examined by their respective buyers at the offices of DAVID FELDMAN S.A.

3.7. Pledge: until full settlement of the account, the buyer grants to DAVID FELDMAN S.A. a pledge on any and all properties held by DAVID FELDMAN S.A., acquired prior to, during and/or after any auction. This pledge secures the repayment of any amount due in principals, interests, commissions, costs and other possible fees. DAVID FELDMAN S.A. is entitled, but not obliged, to realise freely the pledge assets without further formalities and without previous notice if the buyer is in default with the payment of his debts or with the fulfilment of any other obligation hereunder. For this purpose, DAVID FELDMAN S.A. is not bound to comply with the formalities of the Federal Law dealing with actions for debt and bankruptcy proceedings; in addition, DAVID FELDMAN S.A. may choose to institute or go on with the usual proceedings without having beforehand sold the pledged goods and without having moreover given them up.

4. Guarantee

4.1. Extent of the guarantee: subject to paragraph 4.3 below, the authenticity of all philatelic items sold in the auction is guaranteed for a period of 30 days from the auction date, with the express exclusion of any other fault(s). Any reclamation regarding authenticity must come to the notice of DAVID FELDMAN S.A. on the delivery of the lots but at the latest within 30 days from that date. Before delivery, which may take place after the 30 days period, the lots purchased may be examined at the Geneva offices of DAVID FELDMAN S.A. The buyer whose reclamation is made after 30 days from the auction date loses all rights to the guarantee. Such reclamation will not be valid by DAVID FELDMAN S.A.. If an extension of the period is required in order to substantiate the claim with an expertise, a request for such extension must be made to DAVID FELDMAN S.A. within 30 days of the auction date. No request for extension will be considered beyond this 30 days period. An extension will expire 3 months after the date of the auction; the results of the expertise for which an extension was agreed must come to the notice of DAVID FELDMAN S.A. within that period. No further extension of the period will be considered without the express written agreement of DAVID FELDMAN S.A. Only claims, expertise results or other details which are made within the agreed periods will be valid.

4.2. Expertise and counter-expertise: should the authenticity of a lot be questioned, the buyer is obliged to provide an expertise or counter-expertise from a prominent expert in the field, justifying the claim. If a stamp is found by a recognised expert, taking financial responsibility for errors, to have been forged, he may mark it accordingly. Consequently,

the marking «FALSCH» (forged) is not considered an alteration. In the case of such reclamation, DAVID FELDMAN S.A. reserves the right to request, at its own discretion, one or more further expertise(s). All expertise and relative charges accrue to the vendor's account in the case of a justified claim, or to the buyer's account if the claim is not justified. In the case of a justified claim, the lot is taken back and the knock-down price plus the commission are refunded to the buyer. In the case of delayed payment due to expertise agreed by David Feldman S.A., interest is charged at 50% of the standard rate for all cleared lots. If David Feldman S.A. has not agreed, then full interest is due.

4.3. Exclusions: lots described as collections, accumulations, selections, groups and those containing duplicates cannot be the subject of any claim. Claims concerning lots described as a set or groups of sets containing more than one stamp, can only be considered under the terms of paragraph 4.1 above if they relate to more than one third of the total value of the lot. Lots which have been examined by the buyer or his agent, lots described as having defects or faults cannot be subjected to a claim regarding defects or faults. Illustrated lots cannot be subjected to a claim because of perforations, centering, margins or other factors shown in the illustrations.

4.4. Late Payment: if payment of the knock-down price plus commission due by the buyer is not made within 30 days of the date of the auction, DAVID FELDMAN S.A. reserves the right to cancel the sale and dispose of the lot(s) elsewhere and/or to make a recourse to any legal proceedings in order to obtain payment of the amounts due as well as for any incurred damages and losses and any legal expenses. A charge on overdue payment of 5% for the first month and 2% per month afterwards plus expenses incurred is chargeable on any outstanding amount after 30 days of the date of the auction. The buyer who is in default in any way whatsoever has no right of claim under any circumstances.

4.5. Exceptionally, the knock-down price will be reduced to the lowest winning bid where it is shown that the exact same buyer has inadvertently increased the price by using more than one medium of bidding on the same lot.

5. Applicable law and jurisdiction

Unless otherwise stated, all auctions as well as any rights and obligations arising from them shall be governed exclusively by Swiss law. Any legal action or proceeding with respect to the auctions shall be submitted to the exclusive jurisdiction of the courts of Geneva, subject to appeal to the Swiss Federal Court in Lausanne. In every case, DAVID FELDMAN S.A. shall also be entitled, at its discretion, to sue any buyer in default at his place of residence; in such case, Swiss law shall remain applicable and in the case of issues regarding price value, the British Pound is converted at its Swiss franc value at the time of the auction.

6. All Transactions

These Conditions of Sale apply to all transactions of every kind including those outside the auctions, with David Feldman SA.

Note: If these Conditions of sale are translated into one or more other languages, the English translation shall be the official version and shall prevail over all other translations.

(Version: Private Auction - EN-GBP - Last revision: April 2023)

Your contacts



Fernando Martínez
CEO
Member of the Board



Rémy Behra
CFO / COO



David Feldman
Consultant
Philatelic rarities



Guy Croton
Senior Philatelist



Marcus Orsi
Senior Philatelist



Gabriel Rheinert
Senior Philatelist



Ricky Verra
Senior Philatelist

International Representatives Luciano Lucarelli,
Jean-Jacques Tillard

Outside Philatelists and Agents Philippe Abert, Tony Banwell,
Dario Díez, Olivier Eeckeman, Carlos Hernández Rocha,
Yves Louis, David MacDonnell, Jorge H. Del Mazo, Pedro Meri,
Michael Tseriotis, Allan Westphall

Our Team

Administration Andréa Nénot

Accounts and Finance Dimitri Toulemonde

Client Relations Eva Mondehard

Information Technology Octoplus Solutions Sàrl

Logistics Steve Bodenne

Marketing and Organisation Estelle Leclère

Location

Bus stop: **Grand Saconnex, Susette** just in front of the offices.

From Geneva International Airport: 5 minutes by **bus 5** until Grand Saconnex, Place (direction "Thônex, Vallard", every 10 minutes on average), then 1 minute by **bus F** (direction "Fernay, marie" or "Gex, L'Aiglette", every 6 minutes).

From Cornavin Train Station: 20 minutes by **bus F** (direction "Fernay, marie" or "Gex, L'Aiglette", every 6 minutes).



David Feldman
International Auctioneers

Chemin du Pavillon 2
PO Box 29
1218 Le Grand-Saconnex, Geneva

Tel +41 22 727 07 77

info@davidfeldman.com

davidfeldman.com



Download the **SBB Mobile** app on your mobile device to help you with tickets and transport options.

Hotels in Geneva

Hilton Geneva Hotel and Conference Centre ****

Rte François-Peyrot 34
1218 Le Grand-Saconnex

Distance: 5 minutes walk
Room rates: from CHF 199

Tel +41 22 747 02 02
hilton.com

ibis budget Genève Palexpo Aéroport *

Route François-Peyrot 28
1218 Le Grand-Saconnex

Distance: 12-minute walk
Room rates: from CHF 89

Tel +41 22 545 46 46
all.accor.com/hotel/A8F3/index.en.shtml

ibis Styles Genève Palexpo Aéroport ***

Route François-Peyrot 28
1218 Le Grand-Saconnex

Distance: 12-minute walk
Room rates: from CHF 99

Tel +41 22 545 45 45
all.accor.com/hotel/A8F2/index.en.shtml

Hôtel Astoria ***

Place Cornavin 6
1201 Geneva

Distance: 15 minutes by bus F (every 6 minutes)
Room rates: from CHF 160

Tel +41 22 544 52 52
astoria-geneve.ch

Nash Pratik Hotel ***

Chemin de la Violette 13
1216 Cointrin

Distance: 17 minutes by bus 53 (every 30 minutes)
Room rates: from CHF 75

Tel +41 22 55 299 60
nashpratikhotel.com

Hotel Auteuil Manotel ****

Rue de Lausanne 33
1201 Geneva

Distance: 17 minutes by bus F (every 6 minutes)
Room rates: from CHF 190

Tel +41 22 544 22 22
hotelauteuilgeneva.com

The Ritz-Carlton Hotel de la Paix *****

Quai du Mont-Blanc 11
1201 Geneva

Distance: 22 minutes by bus F (every 6 minutes)
Room rates: from CHF 450

Tel +41 22 908 60 00
ritzcarlton.com/geneva

Four Seasons Hotel des Bergues *****

Quai des Bergues 33
1201 Geneva

Distance: 23 minutes by bus F (every 6 minutes)
Room rates: from CHF 610

Tel +41 22 908 70 00
fourseasons.com/geneva

Hotels in France

Résidence la Réserve ****

Avenue du Jura 1
01210 Ferney-Voltaire

Distance: 6 minutes by bus F (every 6 minutes)
Room rates: from €105

Tel +33 4 50 40 30 20
residence-la-reserve.com

m3 Hotel Ferney ***

Rue de Genève 34
01210 Ferney-Voltaire

Distance: 10 minutes by bus F (every 6 minutes)
Room rates: from €105

Tel +33 9 85 60 18 30
m-3hotels.com/ferney

Appart'City Confort Genève Aéroport Ferney Voltaire ****

Avenue des Sablonnières 11
01210 Ferney-Voltaire

Distance: 13 minutes by bus F (every 6 minutes)
Room rates: from €98

Tel +33 4 50 40 22 65
appartcity.com

Appart'hôtel et Spa Odalys Ferney Genève ****

Chemin du Levant 13
01210 Ferney-Voltaire

Distance: 13 minutes by bus F (every 6 minutes)
Room rates: from €102

Tel +33 4 50 99 51 51
odalys-vacances.com



The “Arden” Collection - Geneva - October 4th, 2023

Shipping instructions:

☐ FedEx (no P.O. Box)☐ Registered Mail

(P.O. Box and home address)

☐ Hold for collection

☐ Other (please specify):

Email

☐ I will bid by telephone and request David Feldman SA to call me at the proper time for the lots listed below.

Standard bid steps (£):

£ 50 - 100:	£ 5
£ 100 - 200:	£ 10
£ 200 - 500:	£ 20
£ 500 - 1'000:	£ 50
£ 1'000 - 2'000:	£ 100
£ 2'000 - 5'000:	£ 200
£ 5'000 - 10'000:	£ 500
£ 10'000 - 20'000:	£ 1'000
£ 10'000 - 20'000:	£ 1'000
£ 20'000 - 50'000:	£ 2'000
£ 50'000 - 100'000:	£ 5'000

In case of a tied bid, please
increase my bid(s):

- 1 bid step

□ 10%

□ 25%

☐ Bid for me on the lot(s) I have marked above, purchasing for me as much below my limits as possible.

☐ I fully understand and agree to the "Conditions of Sale" published in this catalogue and on the website.

Signature:



Step 1. Fold along this line, from edge to edge.

Step 2. Fold along this line, from edge to edge.

From:

.....
.....
.....
.....

Step 2. Fold along this line, from edge to edge.

Step 1. Fold along this line, from edge to edge.

