



Who knows.

A26 "Kuller"



"C" cons
A26 duplex
7.5A.1907



30- no- 1911



14 MR- 1911



17-10-1907



09- 24-09



6-NO-1911



17- MR- 1912



28-6A-1912



9-57-1911

ALCAZAR



7-NO-1911



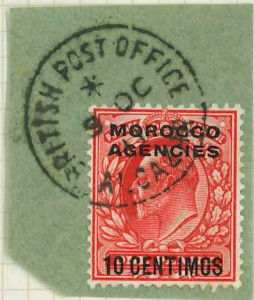
24-15-1907



5-AP-1911



21-07-1907



9-OC-1911



25-AP-1911



18-26-1908



27-AP-1907



14-F3-1911

ALCAZAR

STOTTEN TYPE A213



04-24-08



10mm
spaced
from
ALCAZAR



FE-10-08



04-11-08

DATE/MONTH LINE IN
LINE WITH "RIT" & "FI"



07-5-08



04-6-10



27-7-14



7-7-12



12-MR-12



1-AUG-1911

Turned



? ? 1911

14

ALCAZAR

STOTTOR TYPE ARIA



24-20-07



?-17-08



DATE / MONTH LINE
IN LINE WITH "BR" & "CE"

YEAR CLOSE
TO ALCAZAR



07-8-1907



no 1-1908



0191-11-07

5



NO 26 1908

ONLY known

(R)



MR 1 1909



MR 1 1909



? 11-1909



19-SP-1911

12-MR-1912



NO-1-1911

(7)

TYPE ARI B



AN-4-1908



AN-5-1907



21-AP-1913



? M7-1912



21-?-1914



25-NO-1913



JA12-1910



6-2-1912



FE-5-1910

DEC 1909



JE 4-1909



FE 1 1909

AR13
5100
2001



7-04-1911



AM-6-1910

AP-1-1910
Other known blocks
etc.



57-6-1908



04-11-1910



07-30-1910

17-10-1907



7-11-1907



FE-4-1908

AP-2-1908



8091-01-25

8091-01-25

8

CAROLANCA



2 m7-1912



2-Fe-1915



9-SP-1908



4-SP-1910



11-CA 1913



2-DE-1910



7-OT-1912



6? 191?



7-mR-1908



19-?-1911



?-SP-1907



? SP 1909



4-OT-1910



4-OC-11



? SP-1908



? CA-1909



? mR?



18-DE-1908



? mR ?



? mR 1911



28-OC-1911



4-SP-1911



? ? 19?

CASSABLANCA



24-JU-1912



17-MR-1911



9-FE-09



22-MA-1911



8-NO-1912



10-MJ-1910



29-JJ-1910



27-J-1912



2-DE-1908



11-26-1908



8-JJ-1908



4-FE-09



9-JU-08



23-MJ-13



12-AP-11



17-MJ-1914



7-AU-1909



28-MR-10



15-MA-09



9-JU-1910

CUSTOMERS



29 NOV 07.



9-FEB-09



7 DEC 08

Duplicates



22-NO-1911



11-10-1911



3-10-1909



10-FEB-1910



8-MAR-1908



7-7-1907



7-APR-1908



4-MAR-1910



20-MAR-09



7-NOV-1908



22-FEB-1912



24-APR-1911



1-MAR-08



22-DEC-12



11-APR-1908



9-54-1912



18-m7 191



14-5A 1913

24-06-1911



29-10-1911



21-10-1911



21-10-1911



5 no 1913



21-10-1911



10 7-1907



21-5U-1908



27-AU-1916



SP 17 1906



10 m7 1912



4 F6 1909



12 08 1911



04 6-1907



26-6A-1911



6-5P 1911



20 10 1911



8 m7 1912



SP-1-1908



6-03 1909



A-117-1910



7-FE-1911



27-SP-1910



28-57-1911



24-A4-1911



23-58-1910



2-188-1909



4-117-1912



4-5A-1911



? no-1914



27-87-1912



1ml 1915



? 081908



? 27 1907



? 5L 1908



? 77 1908

CASABLANCA REG OVAL STOTTER TYPE CA-



21-AP-11



9-OC-14



15-JA-12



18-AP-10



28-DE-?



?-?-12



?-?-09



12-JA-10



18-AU-15



27-JJ-10



16-AP-12



?-DE-17



?-DE-13



10-JA-?



27-JJ-10



7-7-1916



7-04-1911



15-17-1910



7-07-1916



24-1A-1915



8-11-1917



30-17-1908



7-10-1909



15 m 7 1909



1-08-1917



? 1A-1900



4-00-1909



?-?-1907

CASABLANCA REG. QVAL

BENDAHAN

BLANCA (Maroc)



12-JA-1911



26-FE-1908



22-0A-1911

CASABLANCA REG OVER



7-AM-1910



28-7-1914



AU-24-1907



GA-6-1911



JU-22-1909



NY-27-1909



SP-6-1911



NO-17-1909



ML-25-1909



DE-24-1911



NO-8-1911



OG-6-1911



DE-13-1911



OC-4-1911



JJ-26-1909



OG-12-1911



DE-5-1911



DE-4-1911



SP-22-1907



SP-2-1911



DE-16-1911



ML-21-1911



JA-8-1912

Fez
F2-1



OC-6-1911



NI-9-1911



M7-13-1910



JA-20-1911



ST-7-1911



DE-13-1911



AP-20-1909



MR-21-1912



AP-2-1912



MR-22-1911



DS-20-1911



NO-23-1911



SP-30-1910



AY-16-1911



SP-27-1911



NO-9-1911



JY-27-1911



NO-15-1910



FE 29-1912
LEAP YEAR
*



02-24-1911

MOROCCO AGENCIES.

BR0 FEZ

F2-1



OC-19-1911



NO-26-1911



SP-11-1911



MR-7-1911



GT-27-1911



NO-26-1911



SP-13-1911



GU-5-1911



OC-9-1911



OC-24-11



OC-8-1911



GT-17-1911



GU-12-1911



FE-7-1911



GU-3-1908



AY-25-1907



OC-29-1907



SP-7-1907



AY-29-1907



OC-2-1908



MT-21-1909



ST-11-1909



ST-20-1909



SP-24-1912



MT-23-1911



MR-20-1911



JA-8-1912



JA-20-1911



JA-5-nd



AY-1-1911

FEZ * C006



M7 3 1907



OC 25 1907



M2 28 1911



SP 3 1911



OC 21 1911



OC 3 1911



OC 20 1911



DC 15 1911



65U 1912



1A 19 1912



SP 15 1912

FEZ * CODE



FE 21 1909



30 M7 1912



NO 17 1909



DE 4 1911



J7 26 1911



SP 20 1911



MR 29 1911



SP 17 1911



SP 1 1911



AU 7 1911



OZ 26 1911



14 A? 1912



AP-17-1910



SP 28 1911



FE 20 1912



M717 1909



ST 3 1910



SP 17 1907



26 OC 1913



OC 30 1911



? 4 1912



? 18 1912

F2-1 FEZ * CUD



NO-11-1910



M7-1-1910



MR 25-1912



FEB-4-1910



10-SEP-1913



JUL 21 1910

Fez * 1905



A4-23-1910

FEZ



04-12-1908



04-12-1913



9-Fe-1914



M7-2-1912



NO-17-1909



MR-24-1908



8-05-1911



DE-14-1908



07-30-1908



04-6-1910



SP-16-1909



07-29-1911



AN-23-10



M7-2-1911

12-11-1910

FEZ



DE-7-1909



GA-31-1910



NO-3-09



18-05-12



NY-14-08



NY-1-1910



NY-28-1910



SP-6-1909



54
124

SP-24-1912
Harrison 25c

FEZ



? 27 12



MC 11



7 7 - 09



MP - 3 - 1910



AN 09



07-5-07



MT-2-0?



JA-19-09



07-29-08



MR-30-08



?-? 1907



DE-13-11



FE-27-1910



GA-19-11



?-12-1911



60-4-11



07-11-10



07-13-08



FE 28-1908



0A-7-1912



PO-1-1909



0A-29-11



DE-7-10

FEZ FZ-2



30-0C-1914



29-0C-13



SA-3-1913

B.P.O FEZ

STOTTEN TYPE F2-A



7 DE 08



14-2-09



MAR 21 10



FIRST a
E & G. Minsham
C. M. 100



24 1 10



27-3-10



02-20-10



24-28-1910



?-12-11



APR 15 12
SOMAXE BOND
Paris 15 x 14



?-27-11



? ? 1912



?-7-1911



2-05-1913



15-24-1908



1912



2 FE 08

FEZ n59 OUSA



???



? no 1914

Fez Rec



FE-16-1911



?-?-1910



JA-10-1913



20-5-1914



JA-28-1913



JA-6-1910

Fer (meuan)



FA? 1917



7-37-08



DE-2-1907
FM18



fm-1A



fm-1B

LARACHE

STOTTEN T-RE

LE-1



7 1/2
Edinburgh
Larache



MR-28-07



JA 5-08



DE 7 08



GA 8 08



MR-10-09



MR 28-09



AU-209



MR-11-08



MR-20-09



AN-14-1907



MR 17 08



no 11 * n code
DE 7 1911



JA-10-1912



JA-26-1911



JA-10-1911



FE-8-1909



06-27-1910



04-5-1908



04-1-1912



04-17-1912



06-17-1911



06-3-1911



04-5-1911



07-5-1911



02-10-1910



04-2-1911



07-8-1911



07-8-1910



08-23-1910



04-22-1910



08-24-1907



04-6-1910



04-22-1908



04-5-1911



02-6-1909



02-26-1911



1911



04-4-1912



02-4-1909



08-6-1910



AU-25-10



SP-27-07



AU-11-08



MR-27-09



M7-19-11



Fe-2-08



FE-14-08



AN-25-09



no-27-07



OC-29-11



no-9-11



OC-24-08



DE-18-1908



?-17-1910



NO-10-11



J7-2-11



?-18-07



J4-8-10



?-11-1910

STUTTER LE-1

LARACHE "*" 0005



AP 19 1907



M7-8-1911



SP 26-1911



NO-11-1911



OC-15-1912



OC-10-1912



ST-4-1912



M7-4-1912



NO 22-1911



SP 20-1911



JA-3-1912



112" IN VENT



AP 11-1912



SP-19-1911



ST-26-1911



AV-26-1911



NO-20-1911



ST-24-1907



6-06-1915



54-22-1909



FE-21-1910



FE-20-1910



M7-7-1910



57-6-1910



57-12-1910



no-6-1910



DE 10 1910



54-15-1911



57-18-1911



57-28-1911



44-5-1911

LARACHE "*" CODE



6-AU-1911



7-AU-1911



AU-10-1911



AU-27-1911



OC-11-1911



OC-20-1911



MR-29-1911



OC-24-1911



OC-30-1911



DE 4 1911



NO 20 1911



M7-2-1912



M7-5-1912



MR-2-1912



MR 7 1912



JA-9-1912



DE-3-1911

LAMACHE * 0003



AO 27 1910



NO 20 1911



AN 29 1911



OC 29 1911

+ STAMPE TUNIS *



DE 5 1911



NO 14 1911



19 JU 1911



14 JU 1911



M 7 2 1911



SP 4 1911



NO 27 1910



M 7 13 1912



AO 15 1912



CA 11 1912



NO 21 1912



AP 13 1910



JU 28 1912



OC 3 1911



NO 8 1912



OC 3 1911

DE 11 1911

LARACHE * CODE



07-20-1910



07-8-1910



DE-1-1911



16-JU-1911



04-7-1910



07-8-1910



07-12-1911



DE 24 1911



DE 10 1911



DE-2-1911



DE-19-1911



SP-6-1911



DE-6-1908



7-5-11



Ag 21 1910



ON 7 1911
ON FOR NO
INSERT WRONG



SP 11 1910



07 18 1911



DE 12 1911



JY 1 1911



075 1912



No 29 1912



JA 30 1912



JA 21 1914



22 Ju 1911



50 14 1911



OC 5 1911



AP 25 1912



MR 29 1912



AP 10 1912



JU 30 1909



JA 4 1912



JA 6 1912



MR 27 1912



DE 7 1912



JA 11 1912



AU 18 1911



M 7 9 1912



J 7 1907



M 7 13 1911

LARAICHE CLONIGHT 12

REGISTERED
MR 17 02
LARAICHE



2-7-1911



7-10-1914



7-29-1914



00-15-??



?? 09



04-17-??



14-8-1913



1914



14-24-1911



no-7-??

CIB PERIOD LARAICHE MS



M7 1912



18 DE 1914



JA 6 1915

"6" 15 INVENCO '9



773 1909



AP 1



77 1913



77 1909



1-10-1917

MOROCCO AGENCIES.

LARACINE no 9
STOTTELE-4



5-03-1911

* CODE
FE 2 12

* CODE
MR 25 12

* CODE
JA 1 09

* CODE
9 OC 12

1
1/2 2 FE 15.
WESTERN

MS AS
157
* CODE
? 12 ? 2

1
1/4 * CODE
MT 19 11
WESTERN



0?

MS AS
108
* CODE
DE 20 07

TANGIER
"D" CODE



DATA PLATE 3
Row 20/2

D. CODE
23 SP 12



D CODE
18 DE 08



D CODE
30 MY 10



D CODE
MR 25 07

D. CODE
18 SP 08



D CODE
25 AU 10

LC-2F



F. CODE
21 00 10

EWD

TANAIER
F. CODE

TA-2051

TANGIER
"I" CODE

2/2

20
MAY
1917

I CODE
21 NO 17



I CODE
10 M 15

I

8 MR 17

15

TANGIER
8 FOR 08

D. CODE
5 FE 8



b.50



B. CODE
? 7 5 4 8



B. CODE
26 AU 8



A. CODE
5 0 C 8



A CODE
12 0 C 8



A CODE
12 AU 8



A CODE
15 P 8



C CODE 19 00 8



A 0002
22 00 8



* CODE
?U 18 07



* CODE
m7 9 07



* CODE
no 11 07



* CODE
SP 8 07



* CODE
JU 4 09



* CODE
ME 23 10



* CODE
27 AP 14



* CODE
57 17 10



* CODE
57 11 10



* CODE
AU 2 10



* CODE
AU 22 08

* CODE
SP 13 10

* CODE
SP 18 10

* CODE
OC 24 10

* CODE
OC 31 10

* CODE
NO 22 10



REGISTERED
" * " CODE
?? 12 1910

F22



* CODE
FE 24 12

F21. LVO



* CODE
M713 12

1

9/12
Western

* CODE
SP 25 08



Registered
? ? 08

* CODE
12 FE 11

* CODE
31 MR 10

18 DE 18

PERF
15 x 14

* CODE
11 MR 08

* CODE
9. JA 15

* CODE
12 AP 11

* CODE
? FE 19
PERF 15 x 14



FRENCH FORCES CANCEL

REGISTERED
23. FE 18

£10.
9/1992
WESTERN

£3
WESTERN.

9/1992

REGISTERED.
15. MT 09

9/92

£2

* CODE
26 JA 11

WESTERN



* CODE
JU 19 11



* CODE
30 no 13



* CODE
14 no 13



* CODE
14 DE 13



* CODE
JA 4 08



* CODE
JY 19 10

2

1/2

REGISTERED
GIB TYPE

WESTERN

2

1/2

REGISTERED
GIB TYPE

WESTERN

2

1/2

REGISTERED
B.P.O. FEZ
? SP 08

WESTERN



* CODE
M7 9 11

* CODE
JU 17 10

HEAD PLATE 1 / DUTY PLATE 3
ROW 5/3

* CODE
FE 21 10

HEAD PLATE 1 / DUTY PLATE 3
ROW 4/6

* CODE
JY 6 10



REGISTERED
? ? E 13

S.
WEST

10/92
ARCT

REGISTERED
SP 4 12

* CODE
JU 17 10

MARRAKESH

* 1000
MAY 13 09

* 1000
MAY 19 09

MAY 11 DE 13

DATA PLATE 3

1000 5/10

1000 5/10



REGISTERED
21 AP 15



REGISTERED
18 JU 11

LKD



REGISTERED
? ? 15

GIBRALTAR



5.30 PM
3 no 11



4 PM
20 FEB 11



4 PM
24 ??



D CODE
31 JAN 8?

* CODE
FE 13 10

DOUBLE RING
C CODE
GIBALTAR PERIOD



* CODE
FE 23 10

* CODE
07 22 02



CONFIDENTIAL
A CODE
10 30 10

CONFIDENTIAL
A CODE
11 30 07

MAZAGAN



* CODE
AU 20 10



* CODE
DE 2 10



* CODE
JU 9 11



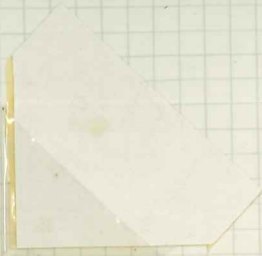
REGISTERED
A CODE
12 7 09



* CODE
AP 18 10

* CODE

* CODE



* CODE DE 17 09 / TANGIER D/ning 8 Am 20 DE 09



* CODE
AU 25 11

REGISTERED A CODE
17 JA!

103
102

24 09

2 9/02
WEXEM

A CODE REGISTERED
28 ? 08

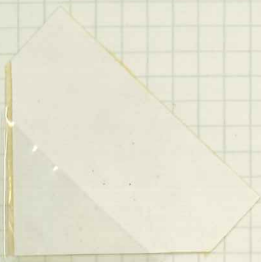
↑
broken line



* CODE
? 26 10
+ AIB TIME CODE

REGISTERED
17 SE ?

WEXEM



B CODE REGISTERED 15 MR 16

VIA LONDON 22 MR 16

VIA BIRMINGHAM — 11 —



B CODE

10 FE 10

C CODE

14 NO 12

1/40 1991

C CODE

14 NO 12

C CODE

75 MAY 11

C CODE

24 NO 11

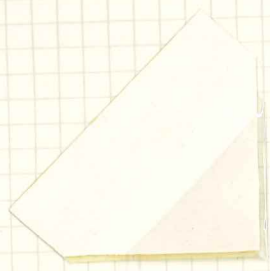


* CODE

18 JA 10

C CODE

C CODE



5 DE 12



23 AU 12



JU 19 09

D CODE
25 NO 12

D. CODE
17 AU 08



D. CODE
25 10



28 no 11



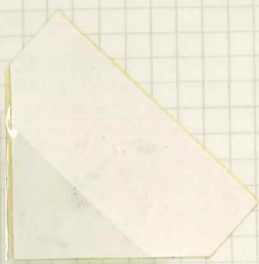
nr 29 09



10 ju 09



FE 26 ?



15 MR 10

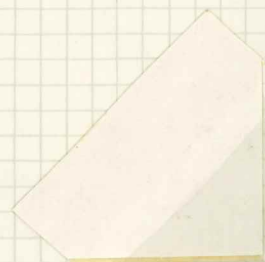
ARRIVED 11.55PM MR 19 10 BIRMINGHAM



1 AU 12



10 M 10



29 MR 11



TANGIER D/Ring 10 AM

10 AM
4 MR 13

10 AM
11 NO 12

HARRISON P59
PEOF 15x14



10 AM
28 APR 11



10 AM
27 MR 12



10 AM
22 m? 12



10 AM 24 APR 10



13 no 11



30 JU 11



10:30 AM



12 07

VIA AIRMAIL 3 DAYS
REGISTERED 4 DAYS

POSTAGE PAID BY ADDRESSEE

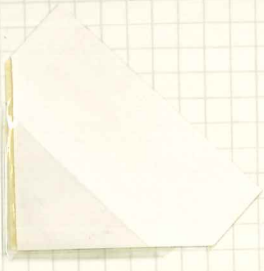
1 Pm



X 0002
M 0 0 0 0

X 0002
M 0 0 0 0

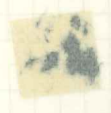
X 0002
M 0 0 0 0



11. no 09



4pm
25 MR 12



24 JUL 12



ST. LUCIA



12 A? 11

18 DE 12

7. Ju 09
Registered



* CODE
13 DE 14

2

1/2

Registered
29 SP 10

WISMAN



* CODE
21 OC 10

13
2

WATER

* CODE
JY 4 07

EARLIEST
KNOWN
DATE

1

1/2

WISMAN

* CODE
26 NO 08



DWY 3
Row 3/3
WISMAN 34



DUST PLATE 3
Row 19/8



* CODE
? MR 11



DUST PLATE 3
Row 9/3
AFTER 2ND RE-TOUCH

REGISTERED
? MR 17

* CODE
1 JA 13

REGISTERED
? ? E 11.

SATFI SJ-1



5-MAR-12



10-OC-12



8-OC-12



8-12-07



12-OC-1912



15-OC-1910



7-OC-?

18-18-07

SARCI



1908



1 no 11



10 SP 12



2-30-11



10 JAN 10



07 1 08



AM-18-12



no 8-09



27-04-10



24 MAR 12



26-07-10



M7 26 11



18-06-11

Poste
15414



06 15 08



23-DE-11



AM-7-07



23-DE-11



21-M7-12



15-FE-1912



20-SP-1911



20-FE-1911



07-27-1910



22-DA-1912

SAFFI



14-no-1910



M7-27-1910



21-JA-1912



09-1-1908



14-30-1908



14-12-1911



14-25-1911



3-M7-1912



25-no-1910



3-JA-1911



?-23-1909



12-DE-?



M7-15-11



18-8-07



17-no-1911



14-16-1911



12-FE-1912



16-no-1911



27 JA 1911



6 JA 1912



11 OC 1912



M 7 21 1911



23 JA 1911



M 2 10 1910



NO 1 1909



17 M 7 1912



22 NO 1911



6 OC 1910



27 16 1908



15 SP 1911



24 FE 1912



2-22-1910



27 3 1910



27 29 1911



AN 17 1910



? ? 1907

SAFFI REGISTERED
CLOUGH TYPE S2



16? 19?



11-58-19?

16-MR-1914



Fe 2? 19?



25-7-19?



7-NO-1912

* CASE

Saffi

CLONK TRAF 52



29 APR 12



29 APR 12



14 MAR 13



19-?-?



15-?-?



7-?-?



23-DE-?



SIATFI "C" CODE REG



9 APR 1912



2 MAY 1911



11-NO-19??

JANUARY CLAUSTRALS



CODE "B"

3 JAN 1907



CODE "A"

17? 19?



CLOUGH T 778 T 11.
6 FEB 07.
LATEST KNOWN DATE



1-FEB-1907

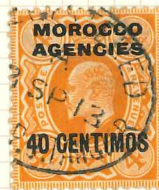
TANGERNE NEAR "A" CODES



27-FEB-1912



1-8A-1909
NEW TANGOR DATE



? 8 SEP 1913



5-M7-1910



27-APR-1909

DUST PLATE 3
Row 4110
←



19-7-1910



13-AUG-1908



? OCT-1907



5-APR-1918



10 JUL 1909



17 OCT-1921

TANGIER "A" REG
TR-RIA



6-04-1911



29-08-1920



2-AU-1911



1 FE 1911



25-08-1911



14-AU-1912



25-00-1911



19-00-1909



25-04-1911

16-MR-1910

TANCHEER 'A' CODE 128



30 57 1911



7 no 1918



13 Av 1912



9-SP-1910



16 FE 1912



5 54 1920



10 no 1910



106 1910

TANGIER "A" CODE REGISTER



7-57-08



3-57-11



23-00-1911



12-11-1911



28-11-1914



7-7-1915



4-12-1914



6-08-1912



17-11-1914



29-07-1910



27-02-1912



30-07-1911

TANCIAL "A" CODE NEG



27-n0-1911



22-M7-1914



10-n0-1911



? ? 1907



1 M7 1911



27-M7-1914



31-DE-1912

4-DE-1912



27-AY-1913



31-OC-1911



15-n0-1912



?2-57-1913



19-PE-1912

Tonciere "B" cups NEG



8-Fe-1921



12-SP-1911



1-MR-1911



30C1911



7-MR-1911



31-MR-1911



11-AU-1921



13-J7-1911



28-DE-1910



7-Fe-1911



19-Fe-1910



8-Fe-1911



30-J7-13

12-5A-1912

Transier "B" was used

INVERTED "B"



?



7 FE - 1912



16 NOV - 1911



Inverted 'B'



14 - OCT 1911



28 - DE - 1910



14 - MAR - 1912



28 - DE - 1910



26 - OCT - 1911

TANGIER REC STATION TE-213



14 Jul 10

n.B.
COPELAND
CORNER.



19 May 12



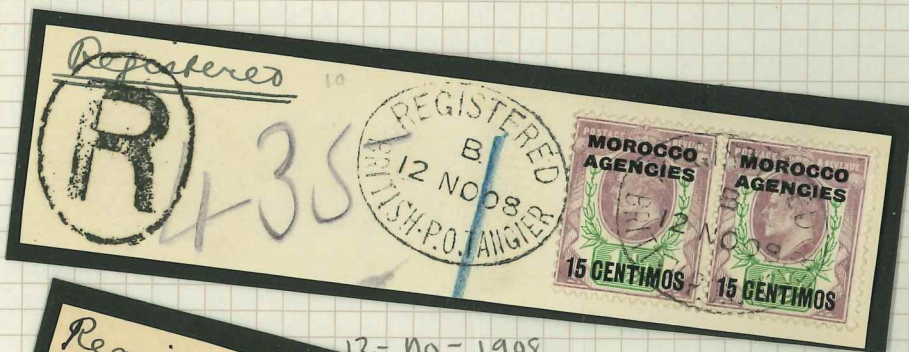
1 Aug 12



7 Feb 1907



? Feb 12



12-11-1908



17-07-12



28-10-1907

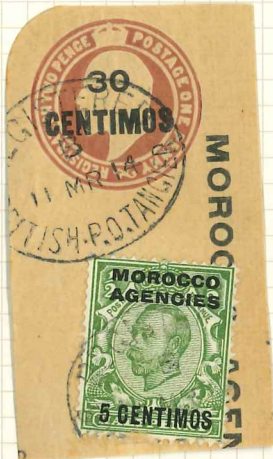
TANGER "B" CODE MSB



17 AN 1911



16-12-1921



11- MAR 1914



11- MAR 1909



15 MAR 1921



22-AN 1912



14 AN 1914



5-AN 1912



15-DS-1909



9-MR-1910



25-FE 1911



17-5-1922

TANGER "c" CODE MEA



25-mr-1911

←
T.I.



2 Au 1911



22 oc 1907



21-Ju-1920



29-nv-1912



14-nv-1912



6 Ju - 1907



24-nv-1911

5-mr-1911

TANAIAH REG "C" 0003



8-02-1911



6-SP-1911



22-SP-1911



19-M7-1911



2 M7-1911



5-SP-1911



24-M7-1911



5-SP-1911



26-M7-1911



6 NO-1912



19 SP 1908

TR-21C

Timenier "c" code REC



16-MR-1909



26-NO-1911



9-NO-1907



9-OC-1912



23-MA-1911



11-04-1912



20-AP-1912



7-04-1911



19-SP-1911



24-NO-1911



24-OC-1910



18-AP-1911

TANEMER RES "C" LWS



20-Fe-1911



26-JA-1911



6-JA-1912



9-M7-1911



20 Fe 1912



17-7-1911



8-10-1912



21-MR-1911



8-SP-1914



25-0C-1911



18-SP-1911

TN-RID

Tangier "D" code ner



Registered.

R TANGIER
No. 390

8 57-1960



7-10-1911



21-07-1910



15-04-1922



?-10-1910



15-08-1919

29-07-1910

Major "D" CODE NEG



30-54-1911



1571910

TANGIER "D" code REC



3-54-10



17-24-1908



7-03-1912



3-57-1908

TANAGER DRAWE " 8 AM "



2-AY-1911



19-AP-1912



17-OC-1911



20-NO-1912



16-OC-1912



19 JU 1912



11-OC-1912



1-MAR-1912



8J? 1912



AY? 1909



10-NO-1910



17 54 1912



19M719?



8 NO 1911

TANGIER D/RMG

9 AM



22-10-1911



21-11-1911



27-11-1911



20-11-1911



11-12-1911



17-12-1909



16-12-1909



16-12-1909



7-1-1912



25-11-1911



12-1-1912



18-11-1910



17-11-1909



24-11-1912



9-1-1912



17-3-1909



1-12-1910

Tanger d'anna 10 AM



10 m 1912



5 no 1911



5 JA 1911



25 SA 1911



21 A 1911



07 26 1909



16 SA 1911



6 02 1911



MA 24 1909



27 m 1911



13-NO-1911



?-? 1912

Tanger d/mar

11 AM



23 no 1911



3 SP 1911



4 SP 1913



7 no 1910



10-mar-1912

Tanger d/mars

3 PM



17 FE 1911



? SP 1912



10 FE 1912



11-mar-1912



19-FE-1912

Tangier dmnq 4pm



12 JA 1912



12-APR 1912



25-MR-1912

Tangier dmnq 12pm



9 OC 1911

TANGIER "A" CODES



OC 2 1907



29-AN 1910



7-11-1910

NO MONTH LETTERS
NUMBERS 17 5 1910

*



7-11-1910



JA 20 1908

TANGIER "A" CODES



FE-28-07

21-51908

MISSING
"D" in
"DB"

TANQUIER "A" LOGO



8-00-13



70-11-1907



A CODE
20 SP 10

A CODE
14 MO 10

ATB
10/95 20



MY 11 08



SP 23 07



AP 10 08



AP 22 08



2 00 ?

TANCER "A" CODE



A CODE
OC 2 07



A CODE
JA 11 08



A CODE
29 JU 07

A CODE
7 MR. 09



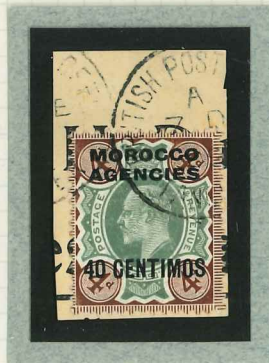
A CODE
FE 11 08



A CODE
DE 19 07



A CODE
21 OC 10



A CODE
7 DE 08



A CODE
AP 22 07



A CODE
AP 2 08

TANGIER B. CODE



B. CODE
57.24.08



B. CODE
JUL 14 07



B. CODE
11 FE 12



DUTY PLATE 3
ROW 9/1

11-FE-1912

B. CODE
11 FE 12



B. CODE
MR 707

Trialer "B" code



1 FEB 1915



C. CODE
24.30.08



C. CODE
3.06.10



C. CODE
22.06.10



21-11-1915



FE-8-1908



C. CODE
1.5.12



06-1-1907



FE-8-1908



C. CODE
DE 12 07



20-06-1910



8-MR-1910



C. CODE
8 MR 10



FE-8-1908



0A13-1908



06-11-1907

TANGIER "C" COPY



"6"
15 INVERTED
"9"

57-6-1908



Fe-8-1908



1-SP-1912



FB-8-1906



PP-14-1910



3-02-1910



26-SP-1910



8-MR-1910



4-11-10

"11" for no



57-16-1908

TANGER "D" COPR



7. no. 09



20 JA 09



26-AP?

TANGIER "D" code code



20 m7 1910



1168 1912

TANGIER "F" code



22 no 1913

MOROCCO AGENCIES.

TANGIER "H" CODE

TR-LC34

25 mm COS.



DE LA RUE
VENT LATE WE
OF DE LA RUE PR

11-57-1914

TANGIER "H" CODE COS



13 no 1914



26 MR 1914



29 M7 1913

TANAIER "J" CODE



14-02-1910

EARLIEST DATE

TR-LC25

TANAIER "J" CODE



8-11-1910

"11" FOR NO



7-02-1910

EARLIEST KNOWN DATE

TETUAN TN-1A



7-23-07



9-02-08



25-MR-09



6-01-09



20-NO-1911



8-09-1911



1-DE-1908



7-7-1908



07-25-07



MR-4-1908



27-NO-1910



7-07-1912



1-7-13



?-?-09



1-AP-10



31-M7-11



14-01-12



24-M7-09



14-AM-10



?-4-1-07



14-7-17



2-AM-1910



TN-1A
BIG LOOPS TO
B



TN-1B
SMALL LOOPS TO
B

TETUAN



5-37-1909



10-SP-1909



17-00-1912



12 ml 1912



5-FE-1914



5-m7-1914



1-5A-1913



1-5A-1912



19-SP-1916



4-5A-1914



1-5A-1913



24-57-1913



8-NO-1911

TETUAN "X" CODE



4-07-1911



12-57-1911



19-00-1911



30-10-1911



16-07-1911



4 m7-1911



18 DE 1911



28-04-1911



8-m7-1911



2 FE 1912

TETUAN * CODE



10 no 1908



15 A 1914



24 no - 1908



1 m 7 1911



19 OCT 1908



22 OCT 1911



16 APR 1912



26 J 1911

TEJUM MR



7-MR-1911



8-FE-1912



6-DE-1909



12-04-1911



20-57-1910



9-MR-1910



? 0A-1910



? 14-1912

TETUAN REC



6 M7-1917



14-5A-1913



26-m7-1921



9-m7-1922



5-04-1912



?-F21918



? 10P-1910



26-A4-1910



1191 3081



1191 3081

1191 3081

MARRAKESH



10-7-1912



18-7-1910



15-7-1912



7-11-1910



26-8-1912



2-8-1910



MH-1A



MH-1B

28
3100

Marrakesh MH1 (A88)



14-06-1908



24-07-1910



26-06-1911



8 no 1909



28-08-1910



27-08-1912



AP 25 1909



07-11-1909



18 no 1911



07-6-1909



22-02-1911



17-07-1911



18 NO 1911



12-5A-1910



25-0C-1910



13-NO-1911



9-NO-1910



7-FE-1911



16-DE-1908



3 FE 1911



26 FE 1911



30 APR 1910

MOROCCO NEG OVAL



24-1910



18-02-1910



JA 4 10



AP 01 10



15 DE 10
Note month / day reversal



28 JA 11



AP 11 11



MY 9 11



JY 17 11



JY 18 11



JY 23 11



AU ? 11



26 NO 11



? NO 11



3 JA 12



? MR 12

MAROKKESH (MELANU)



57-1-1910



124-7-1911



Date?

MOROCCO (MELAN)



75-1911

072-1408



21-10-1911

073?



no-15-1408

MAROKKESH (MELLAN)



SP 14 11



NO-5-10



17-DE-1911



5 CENTIMOS



17-FE-1912



09-25-10



SP-16-1910



5 CENTIMOS



NO-17-08



8-DE-1911



13-01-1912



9-FE-1912



4-MR-1912



? SA-1912



12-MY-1912



8-FE-1912



15

MAROKESH (MOROCCO) REG



11-AP-1927

(PROBABLY INCORRECT
MAKE UP THE
DATE ON ISSUE
IMPROBABLE)
* 27-AP-1911? *



1 MAR 1911



14-37-1912

MM-3



? 27-1909

EARLIEST KNOWN DATE

MAZAGAN CLMAGH MAS



1 JA 1907
FIRST DAY
USE



27-JA-1907



21-JA-07

MAZAGAN * CODE



809171AD



DA-31-1008



DE 7.190?

B.P.O MAZAGAN STUTTEN T 772 MN-1



DU 26 07



ST 17 09



De 23 09



DA 18 10



no 1 10



no 1 10



no 6 10



M 7 16 11



M 7 22 11



M 7 25 11



SP 3 11



OC 7 11



no 2 11



AP/SP?
7-11

MAZAGAN



JA 30 12



JA 31 12



FE 14 12



27-57-12



AP 22 12



OC 18 11



OC 23 12



07 16 07



DE-2-09



FE 25 07



JU? 11



SP? 09



AY-19-10

ES 07 2013



? 22 ?



AP-17-08



M7-13-1910



FE-9-1912



MP-5-1908



MP-7-5-1912



MP-13-1912



MP-1-1910



MP-3-1910



MP-23-1912



MP-21-1911



MP-16-1910



MP-18-1911



MP-27-1908



MP-9-1907



MP-28-1911



MP-20-1909



MP-17-1910



MP-5-1911



MP-11-1910



no-20-1911



00-29-1911



no-20-1909



no-26-1911



AP-15-07



M7-3-1907



no-5-1907



! 30-1910



AP-25-1907



00-11-1911



no-28-1907



AP-22-1908



AP-6-1910



no-7-1909



?-2-1911



FB-23-1910



FB-23-1910



04-23-1912



MD-23-1912



M 7 31 1908



57-22-08



57-22-1908

JA-16-1908



54-22-1910



00-17-08



DE 20-1908



14-18-1911



50-17-1908



00-1-1908



4? 1917

1915



NO-10-1911



MR 8-1910



OC-19-1911



SP 22 1911



NO 13-1908



DU-18-07

DEAD STAMP



ML 26 1907



NO-4-1911



no-25-1911



AP-7-1911



no-28-1911



MR-10-1911



no-11-67



SA-5-1908



MR-27-08



MR-15-67



SP 8 1908



AP-24-1912

MAZAGAN
"A" REG UUM



10-06-7



26-DE-1910



10-54-1909



27-54-1907



9-14-1910



6-17-1907



20-NO-1908



7-14-04



7



17-58-7



28-7-1908



7 DE-1908



21-NO-07



27-1-15



29-DE-1911



30-SP-1913



25-FE-1915



18-JU-1910



30-07-??



17-?-?



29-?-?



11-04-??



6-?-?



21-NO-1907



20-FE-1911



25-JA-1912



23-FE-1915



30-SP-1911



29-OC-?



MAROGAN REG VNM



2-PE-08



25-FEB-1911



3-SP-1911



18-57 190!

MAZAGHAN "A" CODE NEG



10 A9 1911



6 DE 1909



23- JA-1907



27 FE 1912



3 SP-1909



22 AP 1910



6 DE 1909



? JA-1917

MAZAGAN NEG



7-ju 191?



2 mar 191?

Meaurio



11-1-1911



31-8-1908



15-10-1911



14-1-1910



27-5-1911



30-1-1912



3-DE-14



26-07-11



7-22-09



5-DE-1912

* HARRISON *



30-28-08



3-DE-1905



07-22-08



10-19-1908



04-28-1908



AU-2-08

B. Po MEQUINEZ STOTTER TYPE MZ-1B



02 17 07



JUN 4 08



SP 23 08



? 3 09

NO
MONTH
SLUGS.



M 7 28 09



26 JUL 10

DAY/
MONTH
REVENUE



DE 12 10



11 07 11

DAY
MONTH
YEAR



24 OCT 11

230



M 7 19 12



JUL 7 12



25 ? 1?

130



3 ? 10

130



SA ? 0?



SP 4 12



07 23 08



DE 29 09



SP 4 12



27 MAR 13

130

19

MEQUINEZ m213
(no dots in 7p value)



DAY
MONTH
YEAR

3-DE-11



?? 10



AG 25 09

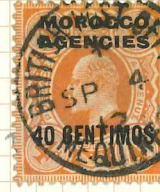


7-6-08



DAY
MONTH
YEAR

6-14-11



SP-4-1912



17-10-07

MOROCCO

CLONK TYPE MOZ
"C" COPY

6 in
16 is
MOROCCO
9
16



16 SA07



19-SA-1907



20-SA-07

CLONK MOZ



11-SA-1907

CLOUGH T 773

MOROGGHO "C" CODE



5-FE-1907



11-FE-1907



? JA ?

MOROCCO
MR-1



OC-28-1910



MR-23-1910



MR-20-1912



MR-23-1911



MR-3-1910



MR-10-1911



FE-1-1911



OC-28-1910



OC-20-1910



MR-6-1912



MR-10-1911



MR-15-1912



OC-22-1911

MOROCCO AGENCIES.

MORADOR



AP-8-1908



NO-16-1911



AN-6-1909



NO-4-1911



SP-12-1910



57-27-1911



NO-29-1911



FE-16-1910



MR-30-1911



MY-7-1909



AP-26-1912



SP-25-1911



AL-11-1910



MR-18-1912



OC-28-1910



SP-10-1911



NO-28-1911



AP-23-1911

MORADOR
MR-1.



JA-9-1911



AP-13-1911



SP-18-1910



AP-20-1910



FE-12-1909



FE-27-1912



SP-10-1909



NO-1-1911



JA-25-1912



JA-4-1909



AP-17-1912



OT-31-1910



SP-4-1911



FE-19-1909



MA-7-1912



OC-25-1911



OC-3-1910



OC-30-1911



DE-10-1909



FE-8-1912



OC-14-1910



OC-25-1911



DE-17-1909

MOROCCO MR-1



NO 271908

MOROCCO 4* CODE MR-1



8-DE-1910



MR-31-1911



AP-1-1910



FE-17-1911



17-1-1912



MR-18-1912



31-00-1912



MR-10-1911



FE 16-1910



MR-21-1911



FE-17-1910



FE-17-1909



17-26-1909



SP-25-1910



FE-17-1911



M7-8-1911



SP-20-1911



OC 22-1907



BP-2-1911



NO-22-1911



AU 12 1908



SP 14 1908



DA 12 1910



PA 14 1906



DB 7 1908



MR 13 1912



M7 7 1909



PE 12 1909

B.P.O. Morocco STICKER TYPE MR-11



m7-26-1911



ny 7 07



ny 4-1-1911



oc-17-07



DE 25 08



MR 12 09



AP 1? 11



20 AU 13



19 m? 14



CA 21 11



07 11 10



AG 10 11



02 15 11



FE-28-12



51-27-?

MOROCCO



544 07



M71908



M71508



57408



071708



12 DE 08



FE 7 08



FE 12 09



22 DE 09



M2 14 10



Mp 7 10



Mp 16 10



Mp 19 10



AP 24 10



04 7 10



041210



57510



AU 20 10



AU 5 10



SP 1 10



003 10



0025 10

Morocco



TE 10 11



M 12 11



M 12 11



S 22 11



N 22 11



A 22 12



10 19 14



D 19-10



? 25-12



DE 6 07



? 27 09



M 12 10



04-27-07



27 08



04 15 11



117-24-07



54-5-1908



07-24-08



0A 26-12



F3-2-1912



0A 27-1912



07-11-08



08-23-1909



08-17-10



27-18-10



20-24-11



0A-13-1912



FE-25-1910



07-10-1911



04-23-1910



0A-20-1908



0A-29-1911

MOROCCO AGENCIES.

MORABDOR



AP 19 1910



AP 3 1908



AP 2 1911



JU 3-1908



DE 30 1909



?-22-1910



FE-26-1912



AP-25-1911



FE-21-1912



FE-20-1912



?-5-1910



NO-16-1911



07-27-1911



JA-26-1912



DE 9-1909



JA-25-1912



JA-8-09



DE-24-1907



191 ?

Rabat * curas



6m71912



8p281907



31-57-1911



57-1-1911



12 571911



no 271909



18 5p1911



3 541909



5 no 1910



17 571911



1 0c 1910



Rabat



9-no-1910

57-13-1908

26-04-10

10-04-10

7-4-07



2-no-1910

21-07-09

1-09-10

2-09-09



18-02-09



14-01-09

24-07-10

20-07-09

15-08-09

27-08-09



24-08-10

22-08-09



13-02-09

15-7-07

23-7-11

10-07-07

7-no-1?



28-06-09

26-7-09

7-7-08

07-7-08

EACH

RABAT



21-SP-1910



31-AU-1911



17-DA-1910



3-NO-11



16-ET-1911



4-ET-10



19-MJ-11



04-11-08



2-18-1908



20-ET-1907



27-SP-1910



3-MR-1909



3-NO-1909



15-DA-1910



15-ET-10



1-ET-10



9-DA-1911



21-ET-1910



10-ET-1910



0C-4-1910



18-SP-1910



17-DE 1911



10-AU-1910

mine
50p
each

BPO Rabat station TMS RT-1



23-08-10



7-AU-10



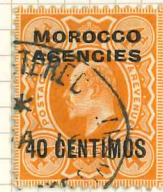
17-08-12



4-08-12



24-m7-12



7-08-16



17-1907



13-08-1910



23-AU-1907



100



13-AU-1911



13-AU-1907



10-17-7



7-7-08



07-12-7



* Broken
value stamp
Dues page 3
Row 2/4

64-27-140?



Robert Lee
STATER TO PE RT-3



?-?-1909



?-57-1910



?-?-1910



20-?-1913

Harrison
P 15 & 14



?



21-DE-1911



6-04-1911



20-57-1914



21-57-1910



21-DE-1911



23-00-1912



30-57-13



?-?-1910



914 in 54410
28-00

Rabat Neg



1-00-1908