



MADE IN ENGLAND BY THE REGISTERED PROPRIETORS OF THE TRADE MARK "SWING-O-RING" FOR STANLEY GIBBONS LTD.
"SWING-O-RING" ALBUM LEAF NO. 3296



313

32

33

34

42

49

493

47



1906-20
Part 10/12/12/24
S. 94-104

1926-30
Perf 14.



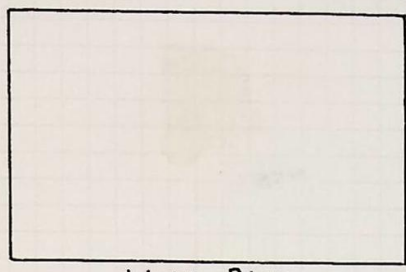




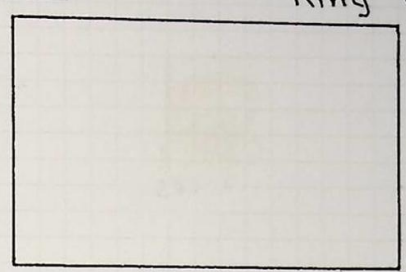
Australia

1931-36

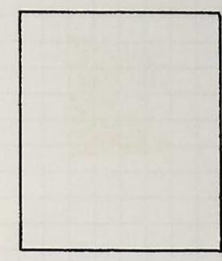
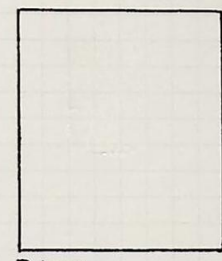
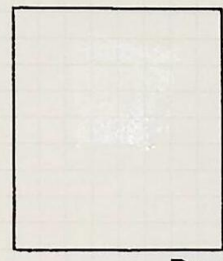
King George V.



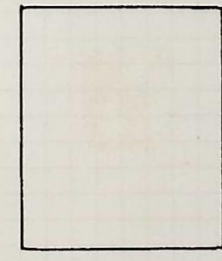
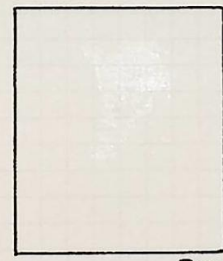
Light Blue.



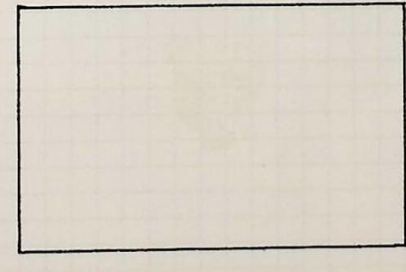
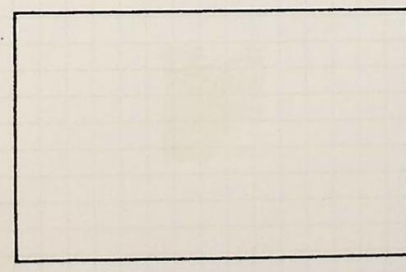
Blue



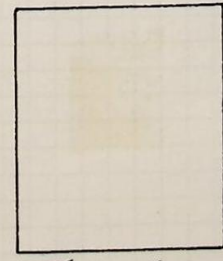
Deep Blue



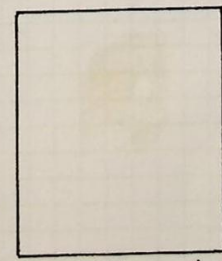
Pale Blue



Dull Slate Blue.



Turquoise



Deep Turquoise

Typographed by John Ash. Perforation 13/2 X 12/2
Watermark Crown over C of A multiple
Date of Issue 1931.

1914-21



Bright green.
22nd. Feb. 1915.



Green.
13th. May 1916.



Yellow-green.
Aug. 1916.



Carmine-red
17th. July 1914.



Pale carmine



Carmine-pink
Jan. 1918.



Rose-red.
March. 1918.



Carmine (Aniline)
1921.



Rose-red.



Pale rose-red.
Watermark Inverted.



Carmine-red.

Die II. White upwards projection
to right of the base of figure '1'
in the shield containing
value at left.



Pale-red.



Yellow-orange.



Yellow-brown.
1920.

Typographed by J. B. Cooke until 1918, then T. S. Harrison. Watermark
Crown over A second type. Perforation 14.

* RING 22 ALBUM LEAF No. 3843 (FACED), NO. 3850 (UNFACED)
STANLEY GIBBONS PUBLICATIONS LTD. LONDON AND RINGWOOD MADE AND PRINTED IN ENGLAND



RING 22 ALBUM LEAF No. 3843 (FACED), NO. 3845 (UNFACED)
STANLEY GIBSON'S PUBLICATIONS LTD. LONDON AND BIRMINGHAM MADE AND PRINTED IN ENGLAND







ENGRAVED DEFINITIVES
DECEMBER 8th. 1913



Red.



Pale Rose-red.



August 26th. 1914.

Designed by R.A. Harrison, engraved and recess-printed
by T.S. Harrison. No watermark. Perforation 11.

KING GEORGE V DEFINITIVES
1916 - 1918



Printed on locally gummed rough unsurfaced paper,
from 1918 on War Savings Stamp paper. Watermark
Large Crown over 'A' single. Perforation 14.

KING GEORGE V DEFINITIVES
1918 - 1923



Black brown



Bright red-brown



Deep red-brown

Chocolate 1920

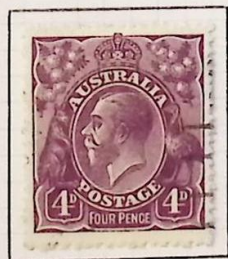
Typographed by T.S. Harrison or A.J. Mullett
(1/4 value from March 1926). Watermark Large
Crown over 'A' single. Perforation 14.

KING GEORGE V DEFINITIVES
1918 - 1923



Brown-orange

Dull orange



Typographed by T.S. Harrison or A.J. Mullett
(1/4 value from March 1926). Watermark Large
Crown over 'A' single. Perforation 14.

DEFINITIVES
1930 - 1932



28th. July - 2nd. August 1930. Surcharged issue. The 5d. on 4½d. is from a redrawn die. Watermark Multiple Crown over A. Perforation 13½ X 12½.



Stamps from the redrawn die without the surcharge were printed but not issued. Some stamps cancelled to order were released by the Post Office. These remain scarce.



15th. February 1932. Designed and engraved by F.D. Manley. Recess printed by John Ash. No Watermark. Perforation 11.



1st. June 1932. Designed and engraved by F.D. Manley. Recess printed by John Ash. Watermark Multiple Crown over C of A. Perforation 13½ X 12½.

KING GEORGE V DEFINITIVES
1931 - 1936



Orange yellow.

Orange, February 1933.



Pale green.



Green, October 1931.



Deep green.



Dark sage green.

Design by R. A. Harrison. Typographed by John Ash. Watermark
Multiple Small Crown over C of A. Perforation $13\frac{1}{2}$ X $12\frac{1}{2}$.

KING GEORGE V DEFINITIVES
1931 - 1936



Golden scarlet December 18th. 1931



Bright deep scarlet.



Pale scarlet.



Inverted watermark.

Design by R. A. Harrison. Typographed by John Ash. Watermark
Multiple Small Crown over C of A. Perforation $13\frac{1}{2}$ X $12\frac{1}{2}$.

KING GEORGE V DEFINITIVES
1931 - 1936



Light blue 1932.



Deep blue.



Ultramarine 30th. September 1932.



Pale blue 1932.



Dull slate blue.

Design by R. A. Harrison. Typographed by John Ash. Watermark
Multiple Small Crown over C of A. Perforation $13\frac{1}{2}$ X $12\frac{1}{2}$.

KING GEORGE V DEFINITIVES
1931 - 1936



Light yellow brown 1932.



Orange-brown 25th. February 1932.



Brown 1932-33.



Pale chestnut brown, early 1936.

Design by R. A. Harrison. Typographed by John Ash. Watermark
Multiple Small Crown over C of A. Perforation $13\frac{1}{2}$ X $12\frac{1}{2}$.

KING GEORGE V DEFINITIVES
1931 - 1936



Red-brown October 1936.



Yellow-olive February 1933.



Deep Yellow-olive 1933.



Turquoise 18th. August 1932.

Deep turquoise 1932.

Design by R. A. Harrison. Typographed by John Ash. Watermark
Multiple Small Crown over C of A. Perforation $13\frac{1}{2}$ X $12\frac{1}{2}$.

THE KANGAROO DEFINITIVES
1913 -- 1914



Green



Watermark
inverted.



Pale-green



Die I. Break in inner frame line at
Lower left level with top of words
of value.

Die II. Die repaired showing no
break in frame line.



Grey



Pale grey



Die I.



Die II.

Design by B. Young. Engraved by S. Reading. Typographed by
J.B. Cooke. Watermark Large Crown over A. Perforation 12.

THE KANGAROO DEFINITIVES
1913 -- 1914



Design by B. Young. Engraved by S. Reading.
Typographed by J.B. Cooke. Watermark Large
Crown over A. Perforation 12.

THE KANGAROO DEFINITIVES
5th. JANUARY - AUGUST 1915



Design by B. Young. Typographed by J.B. Cooke
Watermark Large Crown over A. Perforation 12.

THE KANGAROO DEFINITIVES
1915 -- 1925



Design by B. Young. Engraved by S. Reading.
Typographed by J.B. Cooke. Watermark Narrow
Crown over 'A' single. Perforation 12.

THE KANGAROO DEFINITIVES
1915 -- 1928



Design by B. Young. Engraved by S. Reading.
Typographed by J.B. Cooke. Watermark Narrow
Crown over 'A' single. Perforation 12.

DEFINITIVES
1923 - 1926



1923: Typographed by T.S. Harrison (to February 1926), A.J. Mullatt (to June 1927) thereafter J. Ash. The 6d. and 2/- were printed by all three printers. Watermark Crown over A. Perf.12.



1924: Typographed T. S. Harrison (to February 1926). Watermark Large Crown over A multiple. Perforation 14.



1924: Printed on paper without Watermark. Perforation 14.

THE KANGAROO DEFINITIVES
1929 -- 1930



Broken frame line.

Design by B. Young. Engraved by S. Reading.
Typographed By John Ash. Watermark multiple
Crown over A. Perforation 12.

KING GEORGE VI DEFINITIVES
1937 -- 1938



Die I.



Die Ia.



Die II.
Thick paper.



Die II.
Thin paper.



Designs : R.A. Harrison (1d, 1½d & 2d) F.D. Manley (½d, 3d, 4d, 5d, 9d & 1/-).
Engraving F.D. Manley and T.C. Duffell (6d) and F.D. Manley others. Recess-
printed by John Ash and W.C.G. McCracken. Watermark Crown over C of A
multiple. Perforation 13½ X 14 (vertical) and 14 X 13½ (horizontal)

KING GEORGE VI DEFINITIVES
1938 -- 1949



Printed by John Ash and W.C.G. McCracken. Watermark
Crown over C of A multiple. Perforation 15 X 14.

SURCHARGED DEFINITIVES
DECEMBER 10th. 1941



Overprints designed by F.D. Manley. Recess-printed. Watermark multiple Small Crown over C of A. (sideways on 5 $\frac{1}{2}$ d.). Perforation 13 $\frac{1}{2}$ X 14.

DEFINITIVE ISSUE
1942 -- 1944



Bright blue

Deep blue



Inverted
watermark.

Designed and engraved by F.D. Manley. Recess-printed. Watermark multiple Small Crown over C of A. Perforation 15 X 14.

DEFINITIVE ISSUE
1948 -- 1956



COIL STAMPS



Recess printed by the Note Printing Branch,
Commonwealth Bank on unwatermarked paper.
Perforation 15X14.

STANLEY GIBBONS RING 22 ALBUM LEAF No. 3843 (Facet), No. 3850 (Unfaceted). MADE AND PRINTED IN ENGLAND

KING GEORGE VI DEFINITIVES
1952 -- 1965



19th. March 1952. Watermark Multiple
Small Crown over C of A. (sideways).



30th. January 1957. Deep brown on
toned paper. No Watermark.



October 1965. Sepia brown on white
Harrison paper. No Watermark.

Both values were designed by F. D. Manley. The engraving of the 1/0½ value
was by D. Cameron and the 2/6 by E. R. M. Jones. Recess-printed by the
Note Printing Branch, Commonwealth Bank. Perforation 14½.

KING GEORGE VI DEFINITIVES
1950 -- 1952



Apr. 12th. 1950.



Feb. 28th. 1951.



May 23rd. 1951



Nov. 14th. 1951.



June 19th. 1950.



Mar. 28th. 1951.

No Watermark.

Designed and engraved by F. D. Manley.



October 31st. 1951

Designed and engraved by E. R. M. Jones.



Nov. 28th. 1951.



February 20th. 1952



Apr. 9th. 1952.



Recess-printed by the Note Printing Branch, Commonwealth Bank.
Watermark Multiple Small Crown over C of A. Perforation 15 X 14.

1953 - 1956



No watermark perforation 15 X 14



Watermark Crown over C of A
multiple perforation 15 X 14.

1955 - 1957



Watermark Crown over C of A multiple siseways $1/0\frac{1}{2}$,
no watermark $1/7$ both perforation $14\frac{1}{2}$.



No watermark perforation 15 X 14

Design F.D. Manley from photographs by Dorothy Wilding Ltd.
Engraving by D. Cameron. Recess printed.

DEFINITIVES
1963 -- 1965



Imperforated between vertical pairs from uncut sheets of booklet panes.



COIL



Designed and engraved by P.E. Morriss from a photograph by Anthony Buckley. Recess printed. No watermark. Perforation 15 X 14.

DEFINITIVE ISSUE
1959 -- 1963



Type A.

Type B.



Designed by G. Lissenden from photographs by Baron Studios. Engraved by F.D. Manley (2d.) D. Cameron (3d.) and P.E. Morriss (others). Recess printed. No watermark. Perforation 14 X 15.

DEFINITIVE ISSUE
1959 -- 1964



Scarlet

Rose-scarlet

Designs by Margaret Stones. No Watermark. Perforation $14\frac{1}{2}$.



Red-brown
July 26th. 1961

White paper brown-red
June 17th. 1964

Design by B. Stewart. Watermark Multiple Small Crown over C of A.
Perforation $14\frac{1}{2}$ X 14.

Recess-printed by the Note Printing Branch, Reserve
Bank of Australia.

DEFINITIVE COILS
1959 -- 1963



Designed by G. Lissenden from photographs by
Baron Studios. Engraved by F.D. Manley (2d.)
D. Cameron (3d.) and P.E. Morriss (5d.).
Recess printed. No watermark. Perforation 14X15.

AUSTRALIAN WILD BIRDS
1964 - 1965



Bluish green
August 19th. 1964.

Emerald-green
December 1965.



April 21st. 1965.



August 1965
Printed on unsurfaced
Wiggins Teape paper.



Designs by Mrs H. Temple-Watts. Printed in photogravure by the Note Printing Branch, Reserve Bank of Australia. Printed on chalk-surfaced Harrison paper. No watermark. Perforation 13½.

OFFICIAL STAMPS
1931 - 1933



Kingsford Smith's Flights
4th. May 1931



Opening of Sydney Harbour Bridge
March 1932



March 1932

No watermark. Perforation 11.

OFFICIAL STAMPS
1932 - 1933



Jan. 1932.

Perforation $13\frac{1}{2}$ X $12\frac{1}{2}$.

Watermark Multiple Small Crown over A.



Feb. 1932.

10th. Feb. 1932.

March 1933.



Watermark Multiple Small Crown over C of A.

Perforation $13\frac{1}{2}$ X $12\frac{1}{2}$.

Typographed by John Ash.

OFFICIAL STAMPS
1924



Watermark Crown
over A single.



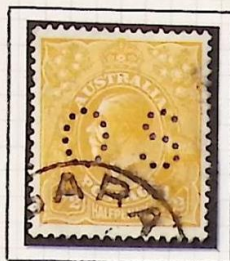
Watermark Narrow Crown
over A multiple.



No Watermark.

Type 2 puncture of
the OS. Perf. 14.

OFFICIAL STAMPS
1926 - 1930



From 1913 Commonwealth of Australia issues had perforated OS initials to denote for official use. There are 3 types of the puncture OS. This is type 2 which has 11 holes in the 'S'.

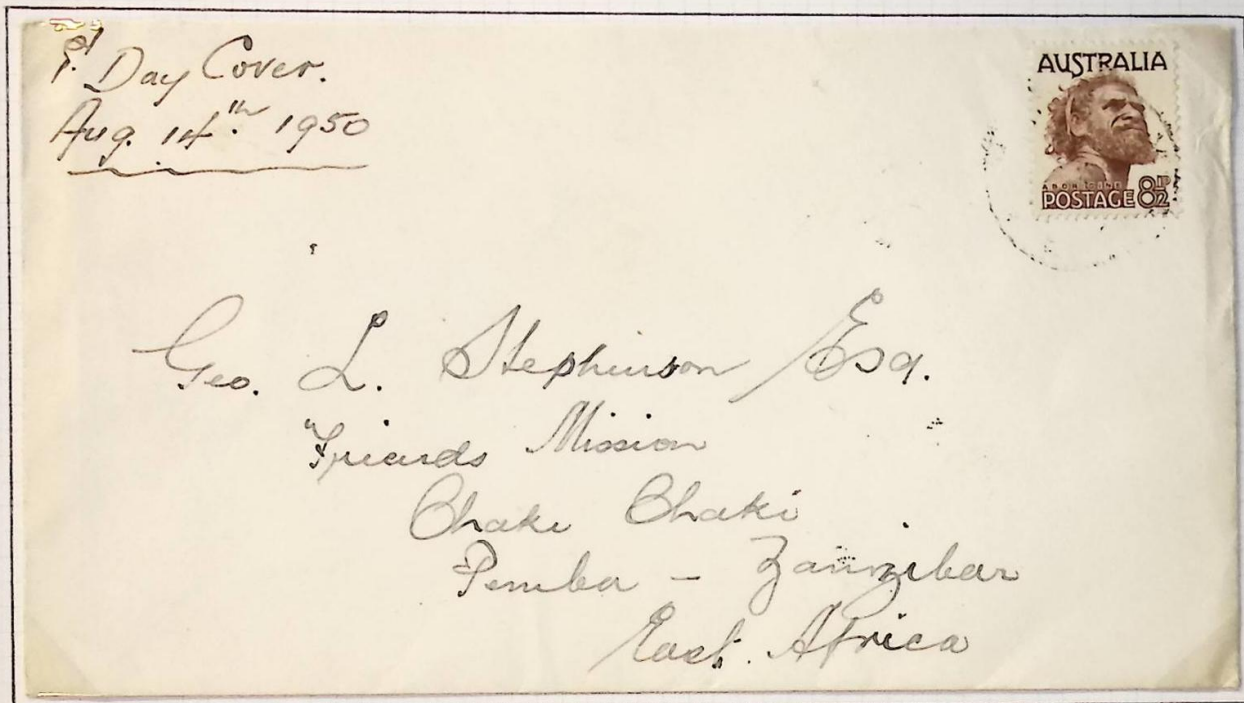
Watermark multiple Small Crown over A. Perforation $13\frac{1}{2}$ X $12\frac{1}{2}$.

BRITISH COMMONWEALTH
OCCUPATION FORCE (JAPAN)



Overprinted for use by the Australian Forces occupying Japan after the Second World War. The 1/2d. 1d. and 3d. values were first issued on 11th. October 1946 and withdrawn two days later, but were re-issued together with the other values on 8th. May 1947. The use of B.C.O.F. stamps ceased on 12th. February 1949

FIRST DAY COVER
14th. AUGUST 1950



First Day Cover from Warrnambool, Victoria,
Australia to Pemba, Zanzibar, East Africa.
Backstamped Warrnambool 14th. August 1950.

AIR MAIL
1948

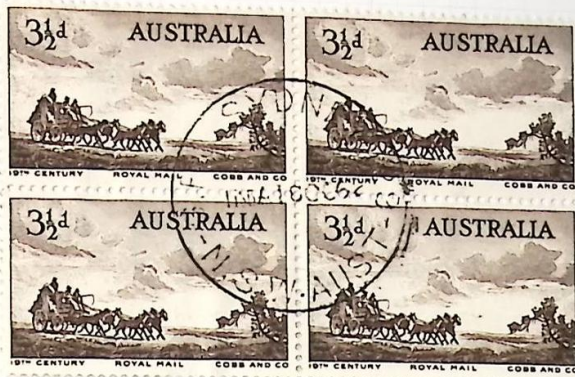


Two Registered Covers sent by Air Mail from
Edgecliff, New South Wales on 29th. Setember
1948 to Cheshire, England.





























Opening of Parliament
House Canberra
9th. May 1927



4th. National Stamp
Exhibition Melbourne
2nd. November 1928



Centenary of Western Australia
28th. September 1929.



Centenary of Exploration of
River Murray by Captain Sturt
2nd. June 1930.



Recess printed on paper
without watermark. Perf 11.

AIR MAIL ISSUE
MAY 20th. 1929



Designed by R.A. Harrison and H. Herbert, engraved by A. Taylor.
Recess-printed by John Ash. No Watermark. Perforation 11.

KINGSFORD SMITH'S FLIGHTS
MARCH 19th. 1931



Inscribed 'AIR MAIL SERVICE'

Designed and engraved by F.D. Manley. Recess-printed by
John Ash. No Watermark. Perforation 11.

AIR MAIL
NOVEMBER 1931



November 4th.



November 17th.

Overprinted O.S. for official use. This stamp was not restricted to official use but was on general sale to the public.



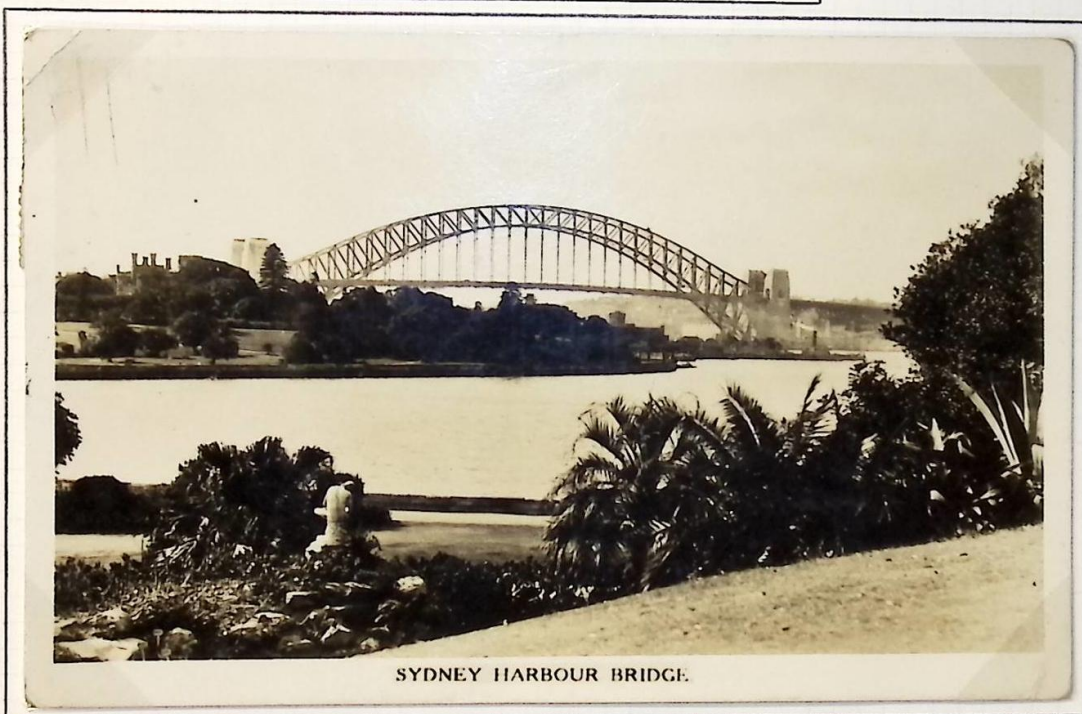
Flown cover dated 19th. November 1931 from Chippendale, New South Wales to Belfast with special Air Mail Flight cachet in purple. Backstamped with a "Sydney N. S. W. Air Mail Section G. P. O." machine cancellation dated 19th. November 1931.

Designed and engraved by F. D. Manley. Recess-printed by John Ash. No Watermark. Perforation 11.

OPENING OF SYDNEY HARBOUR BRIDGE
MARCH 14th. 1932



Recess printed on unwatermarked
paper. Perforation 11.



Postcard showing a view of the bridge which was opened on March
19th. 1932. The card has a Sydney cancellation dated June 16th.
1932 and is addressed to Drumbeg, Dunmurry, County Antrim.



Typographed on paper with Multiple Small Crown
over C of A watermark. Perforation $10\frac{1}{2}$.

Design by R. A. Harrison. Engraved by
F. D. Manley. Printed by John Ash.

CENTENARY OF VICTORIA
JULY - AUGUST 1934



Orange vermilion.

Pale orange vermilion.



Deep blue.

Blue.

July 2nd. Perforation $10\frac{1}{2}$.



August. Perforation $11\frac{1}{2}$.

Designed and engraved by F. D. Manley. Recess printed by John Ash.
Printed upon both Cowan and Wiggins Teape paper : the differences
are not marked. Watermark Multiple Small Crown over C of A.

DEATH CENTENARY OF CAPTAIN JOHN MACARTHUR
NOVEMBER 1st. 1934



Type A : shading on the hills in the background varying from light to dark.

Type B : shading on the hills almost uniformly dark.

Designed and engraved by F.D. Manley. Recess-printed by John Ash.
Watermark multiple Small Crown over C of A. Perforation $11\frac{1}{2}$.

20th. ANNIVERSARY OF GALLIPOLI LANDINGS
MARCH 18th. 1935



Designed by B. Cottier, adapted and engraved by F.D. Manley.
Recess-printed by John Ash. Watermark multiple Small Crown
over C of A. Perforation $13\frac{1}{2}$ X $12\frac{1}{2}$ or 11 (1/-).

KING GEORGE V
SILVER JUBILEE
MAY 2nd. 1935



OPENING OF
SUBMARINE TELEPHONE LINK
TO TASMANIA
APRIL 1st. 1936



CENTENARY OF
SOUTH AUSTRALIA
AUGUST 3rd. 1936



Designed and engraved by F.D. Manley. Recess
printed by John Ash. Watermark multiple Small
Crown over C of A. Perforation 11½.

AIR MAIL STAMPS
1934 - 1948



Pale claret.



Dull claret.

December 1st. 1934 : Printed on chalk surfaced paper. No watermark. Perforation 11.



Pale claret.



Dull claret.

October 22nd. 1937 : Printed on chalk surfaced paper. Watermark Multiple Small Crown over C of A. Perforation $13\frac{1}{2}$ X 14.



February 12th. 1948 : Printed on a thin rough paper. Watermark Multiple Small Crown over C of A. Perforation $13\frac{1}{2}$ X 14.

Design F. D. Manley. Engraved by E. Broad and F. D. Manley. Recess printed by John Ash until April 1940 and W. C. G. McCracken thereafter.

150th. ANNIVERSARY OF FOUNDATION OF
NEW SOUTH WALES
OCTOBER 1st. 1937



Designed and engraved by E. Broad and F.D. Manley. Recess-printed by John Ash. Watermark multiple Small Crown over C of A. Perf. $13\frac{1}{2}$ X 14.

AUSTRALIAN IMPERIAL FORCES
JULY 15th. 1945



Designed and engraved by F.D. Manley from drawings by Virgil Reilly. Recess-printed by W.C.G. McCracken. Watermark multiple Small Crown over C of A sideways. Perforation 14 X $13\frac{1}{2}$.

ARRIVAL OF DUKE AND DUCHESS
OF GLOUCESTER IN AUSTRALIA
FEBRUARY 19th. 1945.



To commemorate swearing in of the Duke as Governor-General
of Australia. Watermark multiple Small Crown over C of A.



1945 :24th. December re-engraved 2/- definitive.
Watermark multiple Small Crown over C of A.
Perforation 12.

VICTORY COMMEMORATION
18th. February.

1946

CENTENARY OF MITCHELL'S
EXPLORATION OF CENTRAL QUEENSLAND
14th. October.



Designed by F.D. Manley (2 1/2d.),
F.D. Manley and G. Lissenden (3 1/2d.),
G. Lissenden (5 1/2d.).

Designed by F.D. Manley.

Engraved by F.D. Manley. Recess-printed by The Note Printing Branch,
Commonwealth Bank. Watermark Multiple Small Crown over C of A.
Perforation 14 1/2.



12th. July 1948. William J Farrer
(Wheat research) commemoration.
Watermark Crown over C of A multiple.
Perforation 15 X 14.



15th. November 1948 Pan-
Pacific Scout Jamboree
Wonga Park 1948-1949.

19th. November 1952. Pan-
Pacific Scout Jamboree
Greystones 1952-1953.

Watermark Crown over C of A multiple. Perforation 14 X 15.



13th. September 1948. Sir Ferdinand von
Mueller (Botanist). Watermark Crown over
C of A multiple. Perforation 15 X 14.

ANNIVERSARY OF BIRTH OF
THE POET HENRY LAWSON
JUNE 17th. 1949



Designed by F.D. Manley engraved
by E.R.M. Jones. Recess-printed.
No watermark. Perforation 15 X 14.

LORD FORRESTER OF BUNBURY
EXPLORER AND POLITICIAN
NOVEMBER 28th. 1949



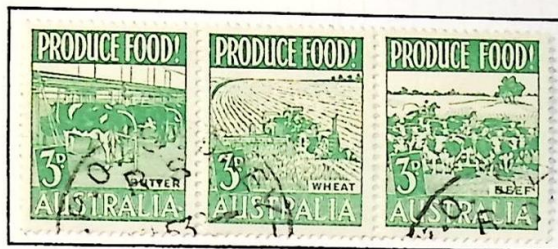
Designed and engraved by F.D. Manley.
Recess-printed. Watermark multiple
Small Crown over C of A. Perforation
15 X 14.

75th. ANNIVERSARY OF FOUNDING OF
THE UNIVERSAL POSTAL UNION
OCTOBER 10th. 1949



Design by Sir Daryl Lindsay and F.D. Manley, engraved by F.D. Manley.
Recess-printed. No watermark. Perforation 15 X 14.

FOOD PRODUCTION
FEBRUARY 11th. 1953



Designs by Post Office artists, adapted by G. Lissenden.
Typographed by the Note Printing Branch, Commonwealth
Bank. No watermark. Perforation $14\frac{1}{2}$.

CORONATION OF QUEEN ELIZABETH II
MAY 23th. 1953



Designed and engraved by F. D. Manley. Recess printed by
the Note Printing Branch, Commonwealth Bank. No watermark.
Perforation 15 X 14.

25th. ANNIVERSARY OF YOUNG FARMERS' CLUBS
SEPTEMBER 3rd. 1953



Design by Post Office artist adapted by P.E. Morriss.
Engraved by E.R.M. Jones. Perforation 14½.

TASMANIAN POSTAGE STAMP CENTENARY
NOVEMBER 11th. 1953



Design R.L. Beck engraved by G. Lissenden.
Perforation 14½.

150th. ANNIVERSARY OF SETTLEMENT IN TASMANIA
SEPTEMBER 23rd. 1953



Design by E.R.M. Jones, engraved by D. Cameron (3½d.),
G. Lissenden (2/-). Perforation 15 X 14.

Recess-printed by the Note Printing Branch, Commonwealth Bank.

ROYAL VISIT
FEBRUARY 2nd. 1954



Designed and engraved by F.D. Manley, border and lettering on 7½d. designed by R.M. Warner. Recess-printed. Perforation 14.

AUSTRALIAN TELEGRAPH
SYSTEM CENTENARY
APRIL 7th. 1954

AUSTRALIAN
RED CROSS SOCIETY
JUNE 9th. 1954



Designed by R.M. Warner, engraved by P.E. Morriss. Recess-printed. Perf. 14.

Designed by B. Stewart, engraved by P.E. Morriss. Recess-printed, the cross typographed. Perforation 14½.

OLYMPIC GAMES MELBOURNE
OCTOBER 31st. 1956



Publicity labels.



Perf. 14.



Perf. 14 X 14½.



Perf. 11½.



Perf. 14 X 14½.



Souvenir miniature sheet.

Designs : P. E. Morrison 4d., F. D. Manley 7½d., M. Murphy and L. Coles 1/-, 2/- design from a photograph by M. Murphy. The 4d. and 7½d. values were recess printed in Melbourne, the 1/- photogravure by Harrison and the 2/- photogravure by Courvoisier.

AIR MAIL ISSUES
1958



January 6th: Inauguration of Australian "Round the World" Air Service. Designed and engraved by P. E. Morriss. Recess-printed by the Note Printing Branch, Commonwealth Bank. Perforation $14\frac{1}{2}$ X 14.



August 30th: The 30th. Anniversary of the First Air Crossing of the Tasman Sea. Design by J. E. Lyle, engraved by F. D. Manley. Recess-printed by the Note Printing Branch, Commonwealth Bank. Perforation 14 X $14\frac{1}{2}$.



Centenary of First Queensland
Postage Stamp. 2nd. November
1960. Perforation $14\frac{1}{2}$ X 15.



Christmas issue 9th. November
1960. Perforation 15 X $14\frac{1}{2}$



Colombo Plan 20th. September 1961.
Perforation 14 X $14\frac{1}{2}$.

SEVENTH BRITISH EMPIRE
AND COMMONWEALTH GAMES
NOVEMBER 1st. 1962



Designs 5d. R.M. Warner, 2/3 G. Hamori. Photo-
gravure printed by Harrison & Sons. Perf. $14\frac{1}{2} \times 14$.

ROYAL VISIT
FEBRUARY 18th. 1963



Designed and engraved from portraits by Anthony
Buckley. Recess printed. Perforation $14\frac{1}{2}$.

50th. ANNIVERSARY OF CANBERRA
MARCH 8th. 1963



Designed and engraved by B. Stewart. Recess
printed. Perforation $14\frac{1}{2} \times 14$

50th. ANNIVERSARY OF
GALLIPOLI LANDING
APRIL 14th. 1965



Design by C. Andrews (after statue, Shrine of Remembrance, Melbourne). Recess printed on paper without watermark. Perforation 14 X 14½.

STANLEY GIBBONS RING 22 ALBUM LEAF No. 3843 MADE AND PRINTED IN ENGLAND

AIR MAIL



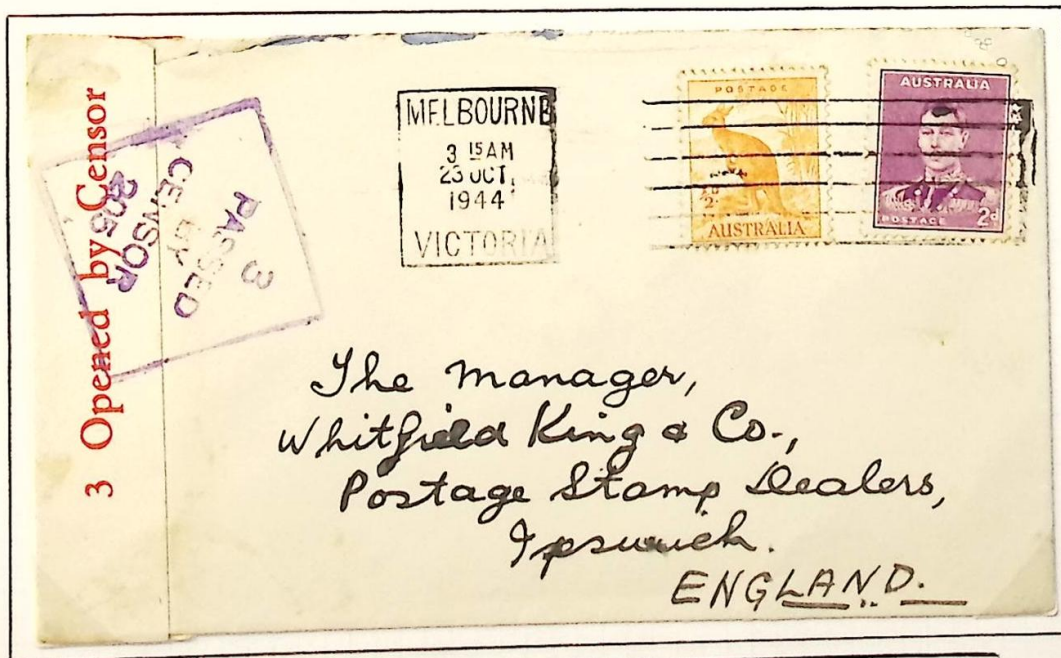
Air Mail cover dated 2nd. May 1934 from Townsville, Queensland via India to York, England.



Flown cover dated 10th. May (two days before the Coronation of King George VI) from Melbourne, Victoria to London, England.



1941 Censored Air Mail cover from Sydney to Bangor, Northern Ireland with "Via America" in manuscript and purple cachet "CALIFORNIA CLIPPER".



1944 Censored cover from Melbourne to Ipswich, England.