

* MAY 1940 *

Reprints of the Penny Black and the Penny V.R. Official cut from the souvenir sheets prepared for the abandoned 1940 Exhibition. Printed by Waterlow & Sons.



STANLEY GIBBONS RING 22 ALBUM LEAF No. 3843 (Faced), No. 3850 (Unfaced). MADE AND PRINTED IN ENGLAND

KING GEORGE VI
1937-1947



Watermark inverted



Watermark sideways



Designs by E. Dulac (head) and E. Gill (frames) 1/2d. to 6d. values
and E. Dulac (whole stamp) 7d. to 1/- values. Printed in photogravure
by Harrison and Sons. Perforation 15 X 14. Watermark Crown over G VI R.

STANLEY BUREAU, 22, ALBANY LEAF No. 3843 (Faint) No. 3850 (Inverted). MADE AND PRINTED IN ENGLAND

KING GEORGE VI
1937-1947



Watermark inverted



Watermark sideways



Designs by E. Dulac (head) and E. Gill (frames) 1/2d. to 6d. values and E. Dulac (whole stamp) 7d. to 1/- values. Printed in photogravure by Harrison and Sons. Perforation 15 X 14. Watermark Crown over G VI R.

KING GEORGE VI ½d. GREEN and 1d. SCARLET
10th. MAY 1937

First day of issue
(May 10th 1937)
King George VI postage.



Florian Williams, Esq.,
21, Grosvenor Crescent,
St. Leonards-on-Sea,
Sussex.

Cover postmarked LONDON 10th. May
1937, first day of issue.



Block from cylinder 25 dot,
control B 37 with pick up bar



Block from cylinder 8 no dot,
control A 37 no pick up bar.

Design by E. Dulac (head) and E. Gill (frame). Printed by
Harrison & Sons. Perforation 15 X 14. Watermark Crown over
G VI R.

KING GEORGE VI 1½d. RED-BROWN
30th. JULY 1937.



Cover postmarked NEWPORT ISLE OF WIGHT 30th.
July 1937, day of issue.



Block from cylinder 50 no dot, control B 37
with pick up bar.

Design by E. Dulac (head) and E. Gill (frame).
Printed by Harrison & Sons. Perforation 15 X 14.
Watermark Crown over G VI R.

KING GEORGE VI 2d. ORANGE & 3d. VIOLET
31st. JANUARY 1938

First Day Cover.

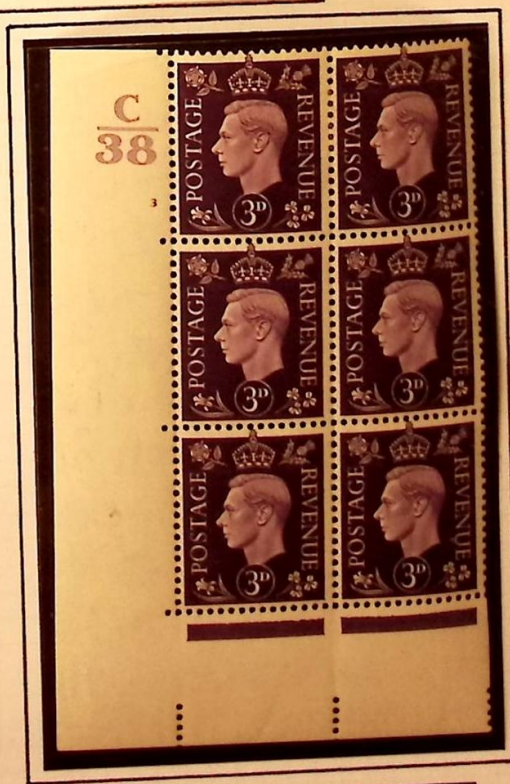


H. J. Spon Esq.,
Park Gate,
Blackham,
nr. Tunbridge Wells.

Cover postmarked LANGTON GREEN, Kent 31st. January
1938. First day of issue.



Block from cylinder 1 no
dot, control B37.



Block from cylinder 3 no
dot, control C38

Design by Edmund Dulac (head) and E. Gill (frame).
Printed by Harrison & Sons. Perforation 15 X 14.
Watermark Crown over G VI R.

KING GEORGE VI 2½d. ULTRAMARINE
10th. MAY 1937

First day of issue
(May 10th 1937)
King George VI postage.



Florian Williams, Esq.,
21, Grosvenor Crescent,
St. Leonards-on-Sea,
Sussex.

Cover postmarked LONDON 10th. May 1937.
First day of issue.



Block from cylinder 61 no
dot, control I41.

Design by Edmund Dulac (head) and E. Gill (frame).
Printed by Harrison & Sons. Perforation 15 X 14.
Watermark Crown over G VI R.

1941-42 KING GEORGE VI
PALE COLOURS



Type I

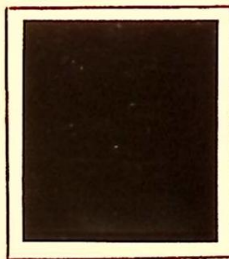
Type II

Type II
Thick paper



Type II was used on all cylinders from 174 onwards, and shows retouching to the multipositive, especially to the white spot in front of the ear, and the strand of hair behind the ear.

Watermark sideways.



Thick paper

Watermark inverted.



Design by E. Dulac (head) and E. Gill (frames). Printed in photogravure by Harrison and Sons. Perforation 15 X 14. Watermark Crown over G VI R.

1941-42 KING GEORGE VI
PALE COLOURS



Type I

Type II

Type II
Thick paper



Type II was used on all cylinders from 174 onwards, and shows retouching to the multipositive, especially to the white spot in front of the ear, and the strand of hair behind the ear.

Watermark sideways.



Thick paper

Watermark inverted.



Design by E. Dulac (head) and E. Gill (frames). Printed in photogravure by Harrison and Sons. Perforation 15 X 14. Watermark Crown over G VI R.

STANLEY GIBSON'S KING 23 ALBUM LEAF No. 385 (Unfaced). MADE AND PRINTED IN ENGLAND

KING GEORGE VI 2½d. LIGHT ULTRAMARINE
21st. JULY 1941



Cover postmarked NEWPORT, MONMOUTHSHIRE 21st. July 1941.



Block from cylinder 225 dot.

Design by Edmund Dulac (head) and E. Gill (frame).
Printed by Harrison & Sons. Perforation 15 X 14.
Watermark Crown over G VI R.

1950-52 KING GEORGE VI
COLOURS CHANGED



Watermark sideways



Watermark inverted



Design by E. Dulac (head) and E. Gill (frames). Printed in photogravure
by Harrison and Sons. Perforation 15 X 14. Watermark Crown over G VI R.

1950-52 KING GEORGE VI
COLOURS CHANGED



Watermark sideways



Watermark inverted



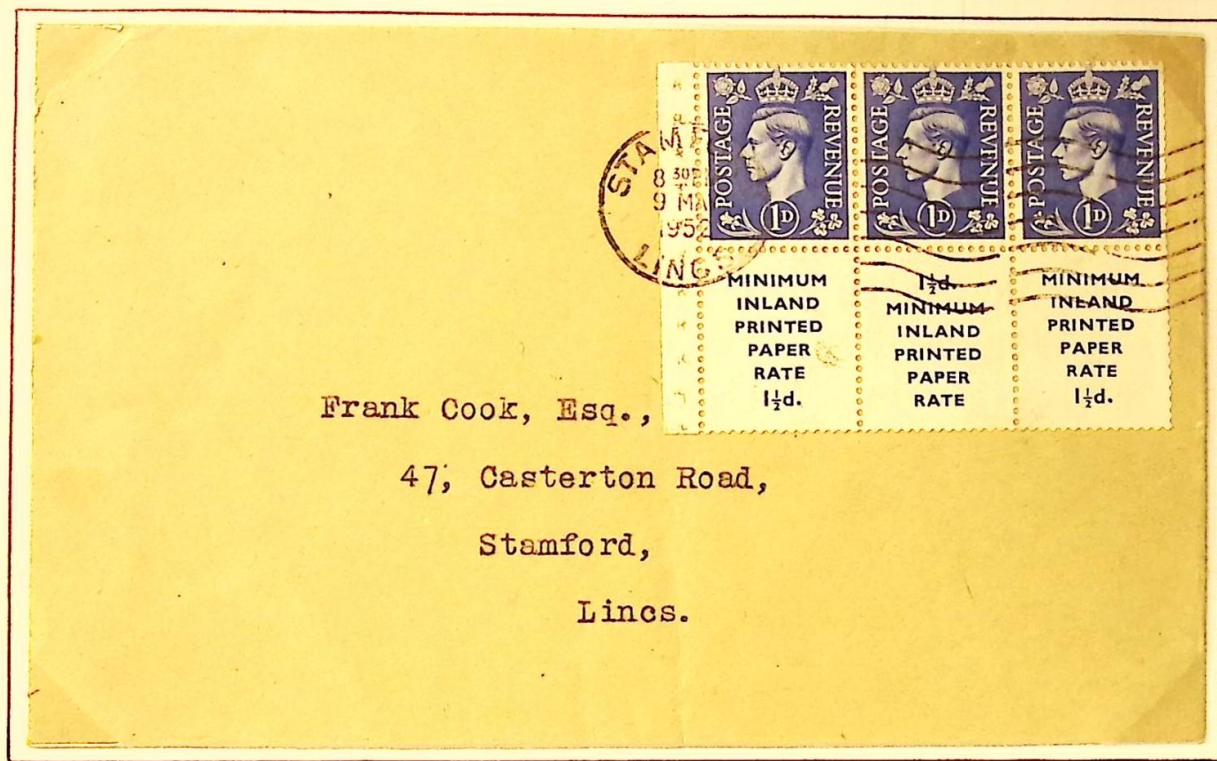
Design by E. Dulac (head) and E. Gill (frames). Printed in photogravure by Harrison and Sons. Perforation 15 X 14. Watermark Crown over G VI R.

KING GEORGE VI BOOKLET STAMPS WITH PRINTED LABELS



Two covers from Aylesbury in Buckinghamshire to Germany. The top one is postmarked 3rd. July and the bottom one 10th. July 1939. Each cover has a 1½d stamp with advertising label attached. These two covers were issued as part of a booklet pane of six comprising of two labels and four stamps. Issued in the 1937 - 38 2/- and 3/- booklets.

KING GEORGE VI
BOOKLET PANES WITH PRINTED LABELS



Frank Cook, Esq.,
47, Casterton Road,
Stamford,
Lincs.

Cover postmarked Stamford 9th. May 1952 with a complete booklet pane comprising of three stamps and three labels. Watermark upright.


2'6 STAMPS 2'6
 6 at 2½d.; 6 at 1½d.; 3 at 1d.; 6 at ½d.
4d MINIMUM FOREIGN LETTER RATE **4d**
For exceptions see inside back cover

OVERSEAS AIR MAILS

LETTERS. Letters and postcards for Europe (except Iceland and Poland) are sent by air at surface rates of postage if earlier delivery is thereby achieved. Letters intended for air transmission to Iceland and Poland and countries outside Europe must be prepaid at special rates of postage.

SECOND CLASS MAIL. Printed Papers, Newspapers and Periodicals, Commercial Papers, Samples, Small Packets and Literature for the Blind may be sent by air at special rates of postage to countries outside Europe.

AIR PARCELS may be sent to most overseas countries.

FOR FULL DETAILS OF ALL AIR MAIL SERVICES SEE AIR MAIL LEAFLET OBTAINABLE AT ANY POST OFFICE.

HARRISON & SONS LTD., PRINTERS, LONDON SEPTEMBER, 1952

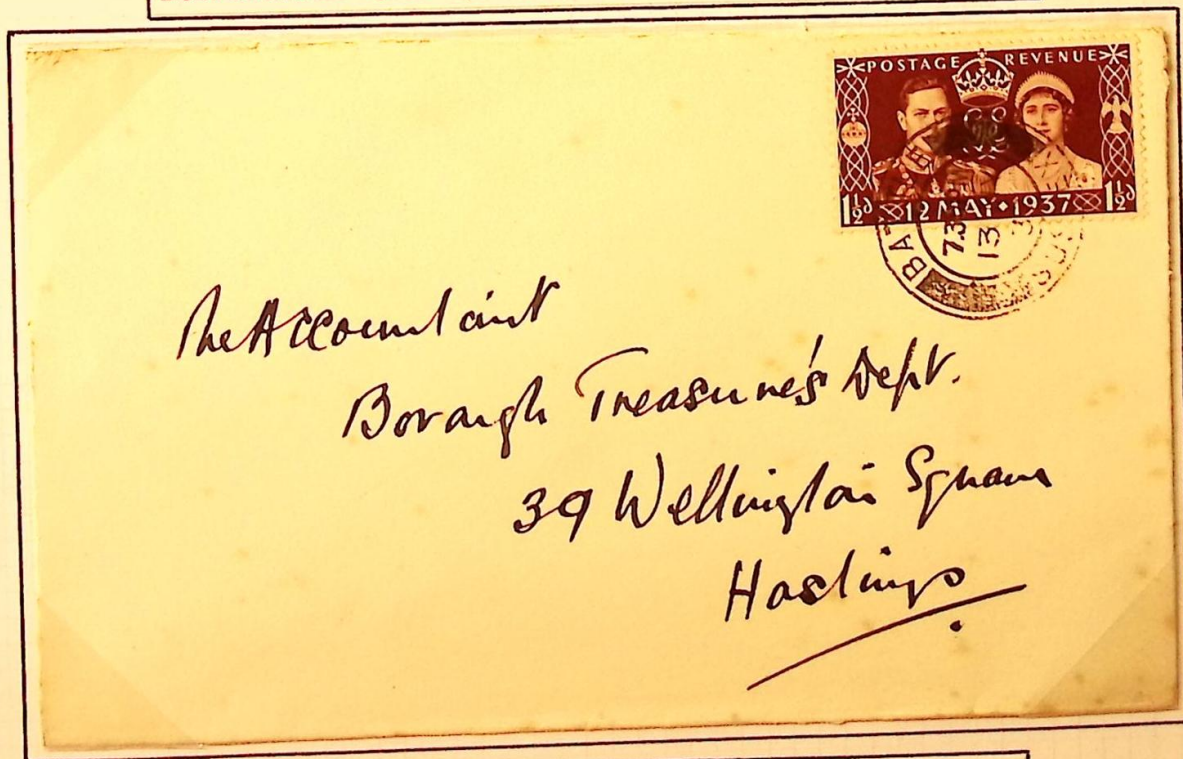


Booklet pane. Watermark inverted.

THE CORONATION OF KING GEORGE VI
13th. MAY 1937



Designed by Edmund Dulac. Printed by Harrison & Sons.
Perforation 15 X 14. Watermark Crown over G VI r.



Cover with stamp cancelled at BATTLE in Sussex on
Day of Issue, 13th. May 1937

THE CORONATION OF KING GEORGE VI
13th. MAY 1937



Colon flaw : Two white dots between 12 and MAY.
Cylinder 7, Row 10 stamp 1. Later retouched.



Extra decoration on King's uniform in the shape
of a white cross. Cylinder 7, Row 1 stamp 5.



Ray flaw : This was a multipositive flaw in which the right arm
of the ornament in upper left corner is almost solid. This flaw
was corrected on some cylinders. Every stamp in position Row 19
stamp 1 either has the flaw or it has been corrected.

CENTENARY OF THE FIRST ADHESIVE POSTAGE STAMP
6th. MAY 1940



C. V. Moss F.S.O.,
101 King's Avenue,
WOODFORD GREEN
Essex

Cover postmarked at London on day of issue.



Design by H. L. Palmer. Printed in photogravure by Harrison and Sons. Perforation 14½ X 14. Watermark Crown over G VI R.

CENTENARY OF THE FIRST ADHESIVE POSTAGE STAMP
6th. MAY 1940



Control G 40.
Cylinder 6 no dot.

Control G 40.
Cylinder 1 dot.



Design by H. L. Palmer. Printed in photogravure by Harrison
and Sons. Perforation $14\frac{1}{2}$ X 14. Watermark Crown over G VI R.

CENTENARY OF THE FIRST ADHESIVE POSTAGE STAMP
6th. MAY 1940



Control G 40.
Cylinder 3 no dot.



Control G 40.
Cylinder 2 no dot.



Design by H. L. Palmer. Printed in photogravure by Harrison and Sons. Perforation $14\frac{1}{2}$ X 14. Watermark Crown over G VI R.

CENTENARY OF THE FIRST ADHESIVE POSTAGE STAMP
6th. MAY 1940



Control G 40.
Cylinder 2 dot.



Control G 40.
Cylinder 5 dot.



Design by H. L. Palmer. Printed in photogravure by Harrison and Sons. Perforation $14\frac{1}{2}$ X 14. Watermark Crown over G VI R.

CENTENARY OF THE FIRST ADHESIVE POSTAGE STAMP
6th. May 1940

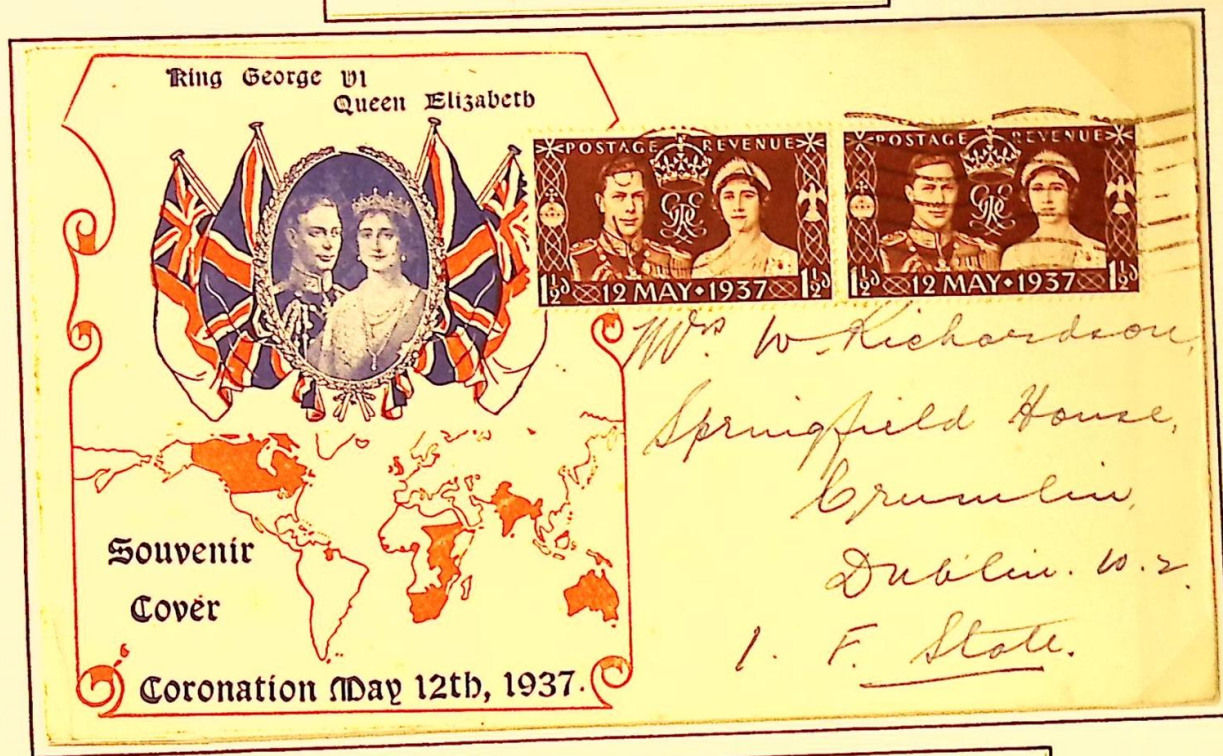


Cover issued at The Royal Philatelic Society's Stamp Centenary Exhibition and cancelled with the special Red Cross handstamp dated 8th. May 1940.

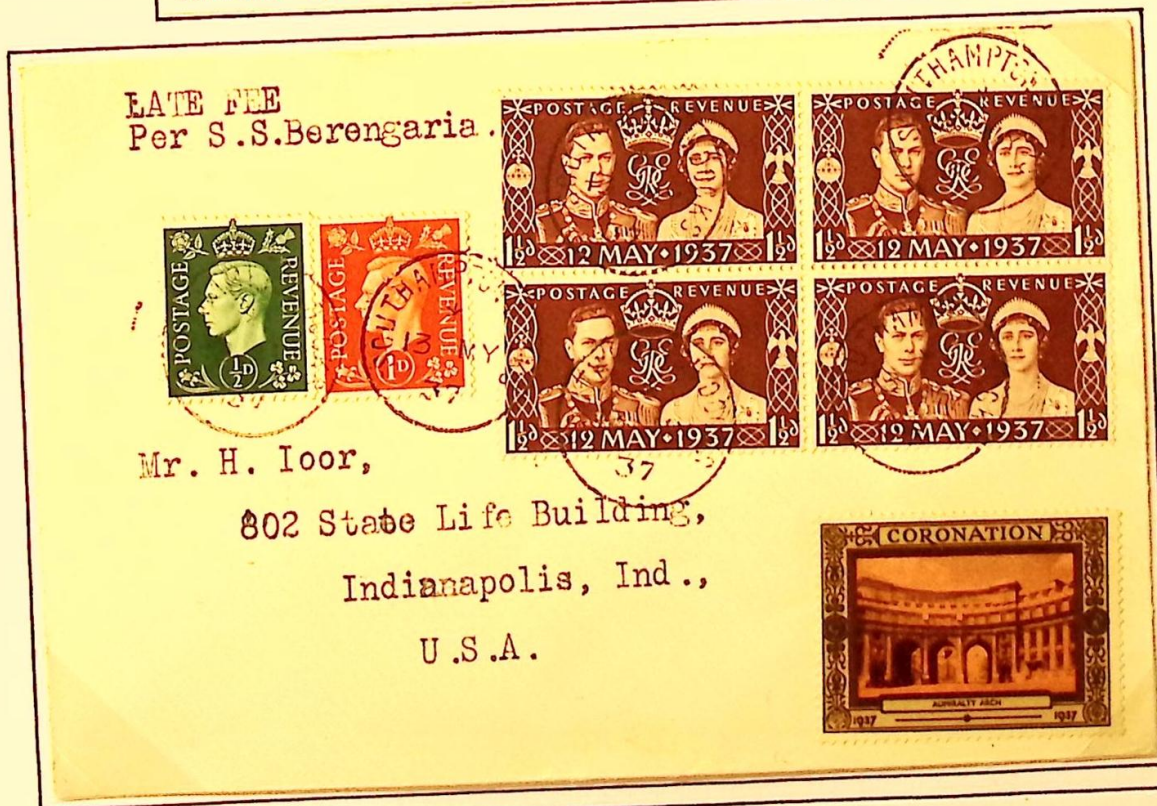


Stamps depict Queen Victoria and King George VI, the designer was H.L.Palmer, printed by Harrison and Sons. Perforation $14\frac{1}{2}$ X 14, Watermark Crown over G VI R.

THE CORONATION OF KING GEORGE VI
13th. May 1937



First Day Cover from Cardiff to Dublin postmarked
Cardiff 13th. May 1937.



Cover to Indianapolis U. S. A. with a block of 4 Coronation stamps
cancelled on day of issue by a single ring Southampton Docks handstamp.
The 1d. and 1/2d. stamps make up the rate to America and pay the late fee.

KING GEORGE VI
 VICTORY COMMEMORATION 11th. JUNE 1946

First Day Cover.

THE STAMPOs COMPLIMENTS
 TO YOU ALL

COURIER'S VICTORY TO YOU ALL

WOT NO VICTOLY ?!

A'INT IT A SLAME
 EH, AIN'T IT A SLAME

R
 BRISTOL 13
 No 6533



THE COURIER STAMP CO.,
 9, CHRISTMAS STEPS,
 BRISTOL.1.

A small number of these covers were issued
 by the Courier Stamp Company.

VICTORY ISSUE 11th. JUNE 1946



Seven berries on olive branch variety.
Row 12 stamp 5 on sheets from cylinder 4.



Stamps from cylinder 5 printed in shiny ink.

Printed by Harrison & Sons. Perforation 15 X 14.
Watermark Crown over G VI R.

KING GEORGE VI
VICTORY IN EUROPE 1945



Rev. J. B. Moore, B.A.,
- Portsea,
Undercliff Road,
Felixstowe.
Suffolk.

Victory Bells slogan postmark used from 8th. May to 9th. June.

OLYMPIC GAMES
29th. JULY 1948



First Day Cover with OLYMPIC GAMES WEMBLEY, GT. BRIT.
3-45p.m. 29th. July 1948 (town die) plus 'Olympic Rings'
machine cancellation. Used on mail posted at Games.
Applied at Wembley Head Post Office.



Designs by Percy Metcalf (2½d), Abram Games (3d),
Stanley D. Scott (6d) and Edmund Dulac (1/-).
Printed by Harrison & Sons. Perforation 15 X 14.
Watermark Crown over G VI R.

OLYMPIC GAMES
29th. JULY 1948



Crown flaw, cylinder 1 no dot
row 20 stamp 2.

Designs by Percy Metcalf (2½d), Abram Games (3d), Stanley D. Scott (6d) and Edmund Dulac (1/-). Printed by Harrison & Sons. Perforation 15 X 14. Watermark Crown over G VI R.

75th. ANNIVERSARY OF THE UNIVERSAL POSTAL UNION
10th. OCTOBER 1949

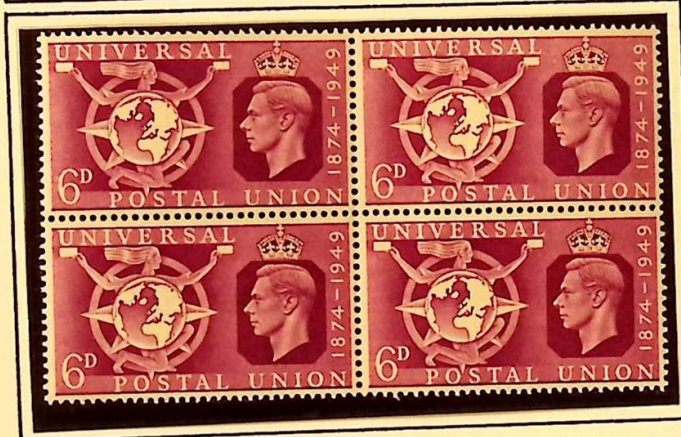


First Day Cover postmarked Forest Gate 10th.
October 1949.



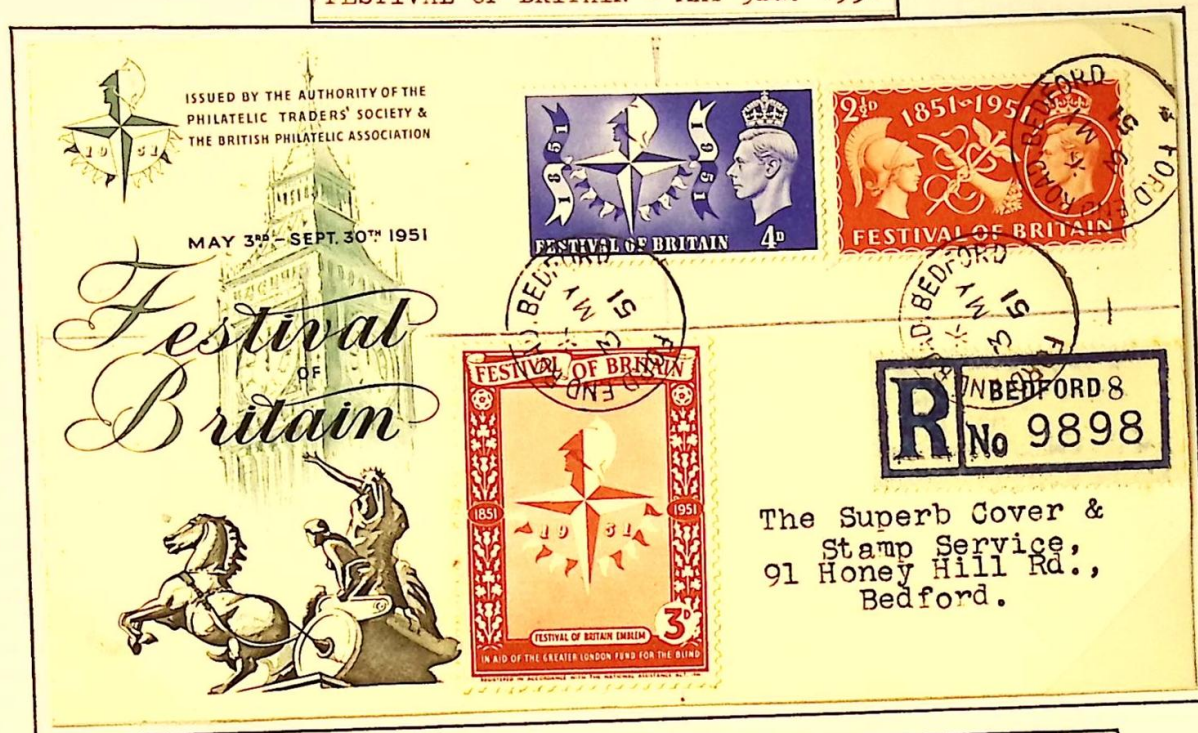
Designs by Mary Adshead (2½d), Percy Metcalfe (3d),
H. Fleury (6d) and George R. Bellew (1/-). Printed
by Harrison & Sons. Perforation 15 X 14. Watermark
Crown over G VI R.

75th. ANNIVERSARY OF THE UNIVERSAL POSTAL
UNION 10th. OCTOBER 1949



Designs by Mary Adshed (2½d), Percy Metcalf (3d),
H. Fleury (6d) and George R. Bellew (1/-). Printed
by Harrison & Sons. Perforation 15 X 14. Watermark
Crown over G VI R.

FESTIVAL OF BRITAIN * MAY 3rd. 1951



The Superb Cover &
Stamp Service,
91 Honey Hill Rd.,
Bedford.

Registered First Day Cover, postmarked Fordend Road Bedford 3rd. May 1951. The label on the cover was sold during the Festival to raise funds for the blind in the Greater London area.



Edmund Dulac designed the 2½d value and Abram Games the 4d. Perforation 15 X 14. Watermark Crown over G VI R. Printed by Harrison and Sons London.

TRAVELLING POST OFFICE CENTENARY
6th. JANUARY 1938



1939 T.P.O. cachet on cover to Rotherham with stamps tied by two strikes of the "PORTADOWN & DERRY T.P.O." single ring datestamp. After 1922 the Travelling Post Offices within Northern Ireland adopted this British style datestamp with an asterisk above the date.

KING GEORGE VI
EMPIRE EXHIBITION 1938



POST OFFICE, THE CLACHAN, EMPIRE EXHIBITION, SCOTLAND. 1938.

X.75.

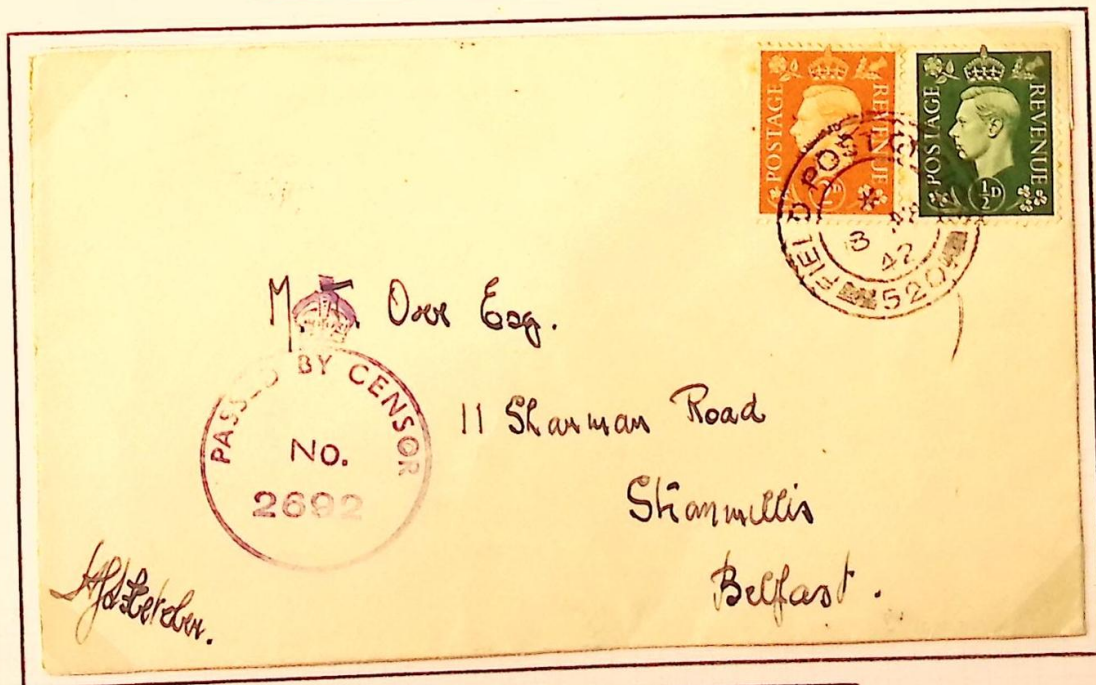


Two postcards posted at the Exhibition with 'CLACHAN POST OFFICE' labels attached. The Empire Exhibition Glasgow slogan postmark was in use from early February to late October 1938.

FIELD POST OFFICES



Field Post Office 328 in use in Northern Ireland from 1940 to 1943.

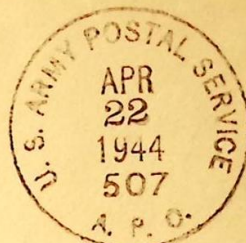


Field Post Office 520 in use in Northern Ireland from 1940 to 1943.

Following the outbreak of the Second World War and the influx of troops into Northern Ireland, Field Post Offices were established in various parts of the province. They used double-circle datestamps with their office number at the foot.

UNITED STATES ARMY POSTAL SERVICE
1942-1944

1st Lt. O. Earl, Capt AC 0906282
1511 Truck Regiment
APO # 635 U.S. Army



Mr. + Mrs. D. A. Riches
31 West End Road
Leottingham, Yorks
England

W. H. Leaf Capt. A.C.

Cpl. J. Daniel Saffer
61st General Hospital
APO 63, U. S. Army
ENGLAND



Miss Dorothy Hooson
17 Grosvenor St.
Wallasay
Cheshire

The United States of America were brought into the Second World War on 7th. December 1941. By late April 1942 a Postal Division was established to supervise and administer all Army Post Offices in the European Theatre. By 1944 some 141 A. P. O. were operating in Great Britain and Northern Ireland, each A. P. O. had a number, similar to the British system and this often appeared in its datestamps, although, for security reasons these numerals were sometimes omitted.

SECOND WORLD WAR
CENSORED MAIL

EXAMINER 5913



WASTE PAPER
BONES RAGS

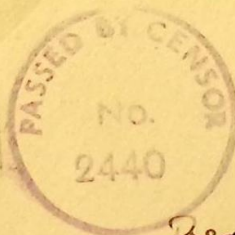
The School of Accountancy.

2, West Regent St.

Glasgow.

Scotland

1940 Envelope from Belfast to Glasgow opened by censor and resealed with 'OPENED BY EXAMINER 5913' label. Stamps cancelled by the Belfast wartime slogan 'SAVE WASTE PAPER, METAL, BONES, RAGS' dated 9th. October 1940.



Rev. R. Clarke S.S.

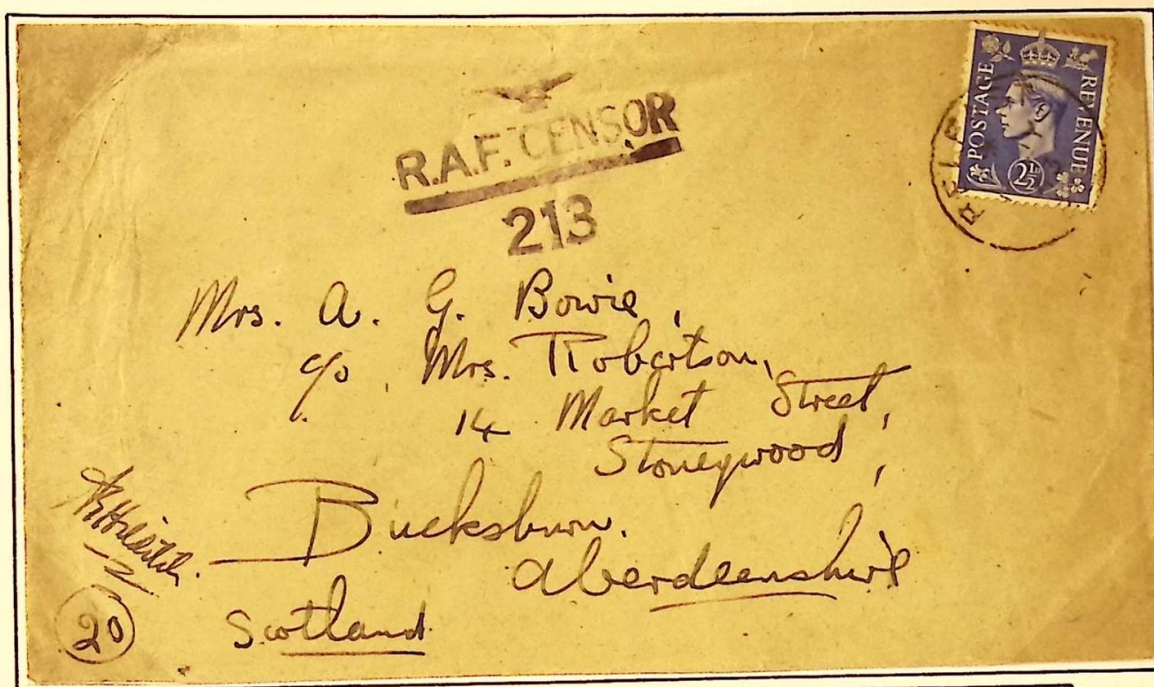
114 Mount St.

London W.1.

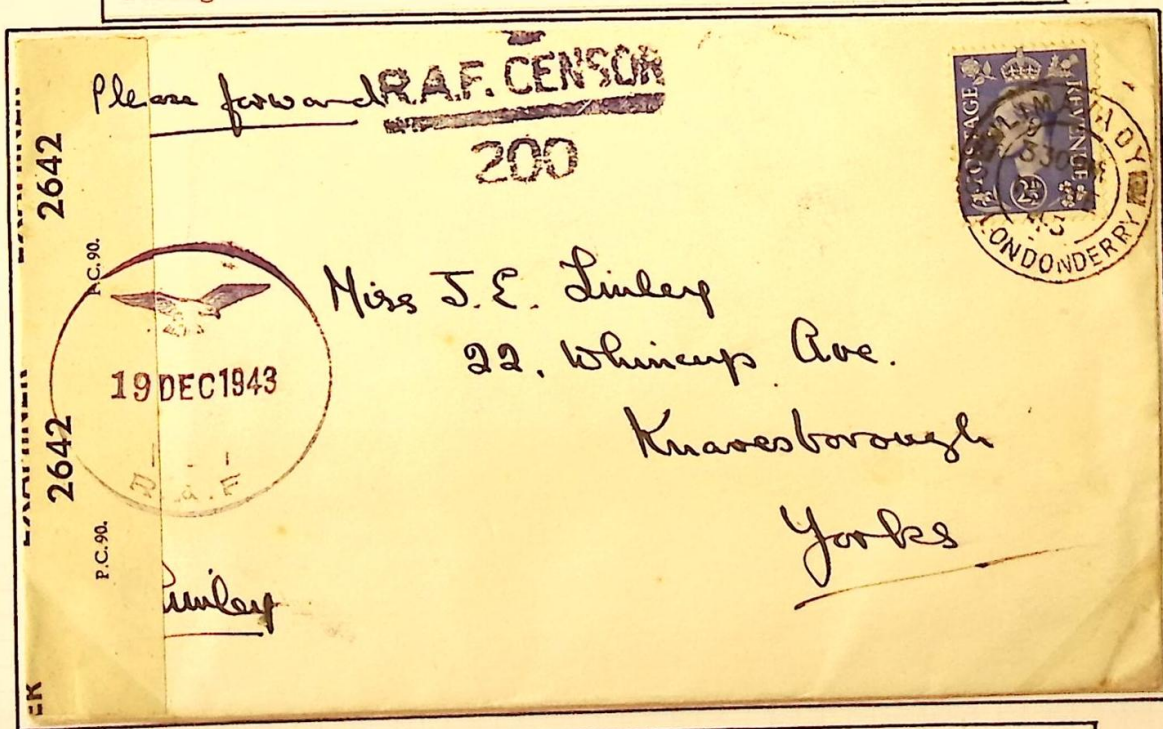
a Birmingham

1944 Envelope from Killyleagh, County Down to London with a circular violet Passed by Censor handstamp. Stamp cancelled by a single ring Killyleagh, Belfast handstamp dated 6th. February 1944.

ROYAL AIR FORCE CENSORED COVERS
SECOND WORLD WAR



Cover from Belfast to Scotland. Stamp cancelled by a single ring handstamp of Belfast dated 16th. July 1943. Also a straight line R.A.F. Censor mark number 213



Cover from Limavady to Yorkshire with a double ring handstamp of Limavady, Co. Londonderry dated 18th. December 1943. Also a straight line R.A.F. Censor mark number 200 and a circular R.A.F. mark dated 19th. December 1943. The cover has been opened and re-sealed by the examiner on the left.

LONDON INTERNATIONAL STAMP EXHIBITION
6th. - 13th. MAY 1950

LONDON
INTERNATIONAL
STAMP
EXHIBITION

★ MAY 6TH TO MAY 13TH
1950



GROSVENOR HOUSE
PARK LANE. W.1

A.E. Blake. Esq.,
19, Moorfields.
LIVERPOOL. 2.

LONDON
INTERNATIONAL
STAMP
EXHIBITION

★ MAY 6TH TO MAY 13TH
1950

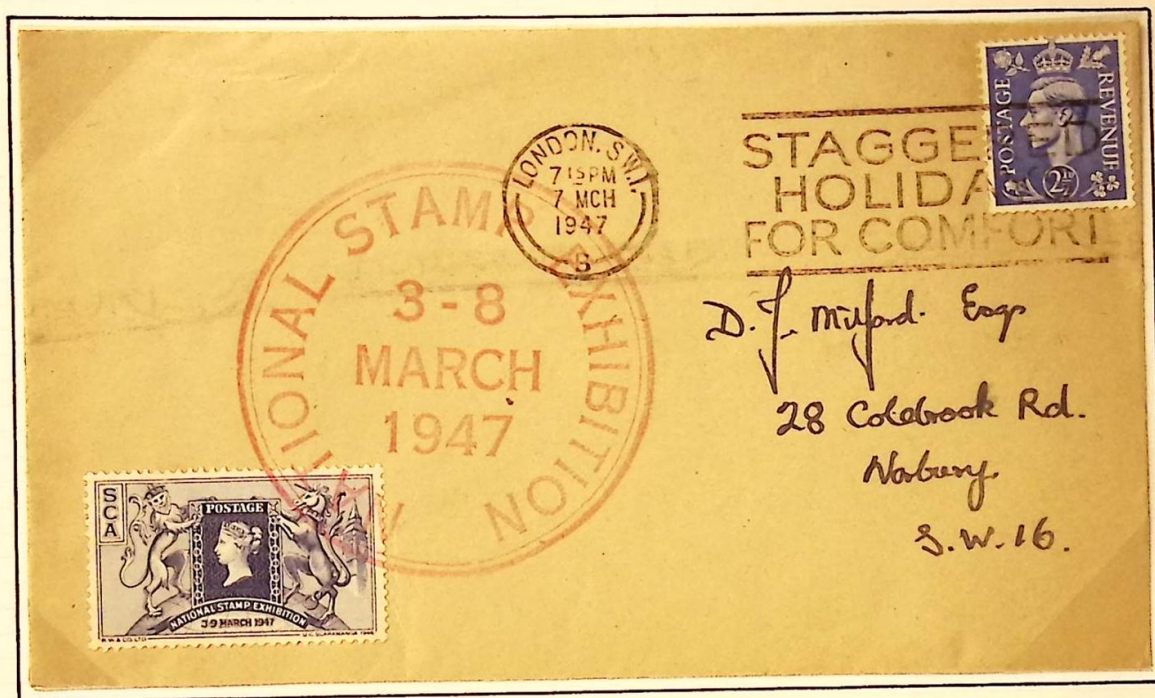


GROSVENOR HOUSE
PARK LANE. W.1

A.E. Blake. Esq.,
19, Moorfields.
LIVERPOOL. 2.

Machine-applied postmark with wide setting between circle and cross and including time. Numbers 6 - 13 at centre of cross changed daily to coincide with date.

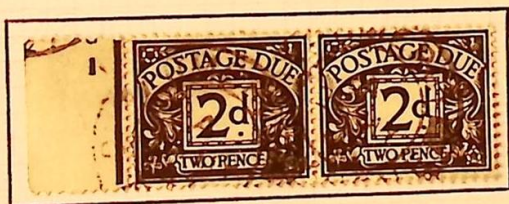
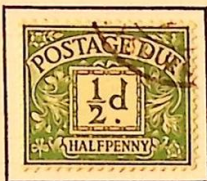
NATIONAL STAMP EXHIBITION 1947



Envelope used with King George VI 2½d blue cancelled on 7th. March 1947 with the London slogan cancellation 'STAGGERED HOLIDAYS FOR COMFORT', plus a blue exhibition label cancelled with a large red circular rubber handstamp 'NATIONAL STAMP EXHIBITION 3 - 8 MARCH 1947'. Also an unused block of 4 of the exhibition labels.

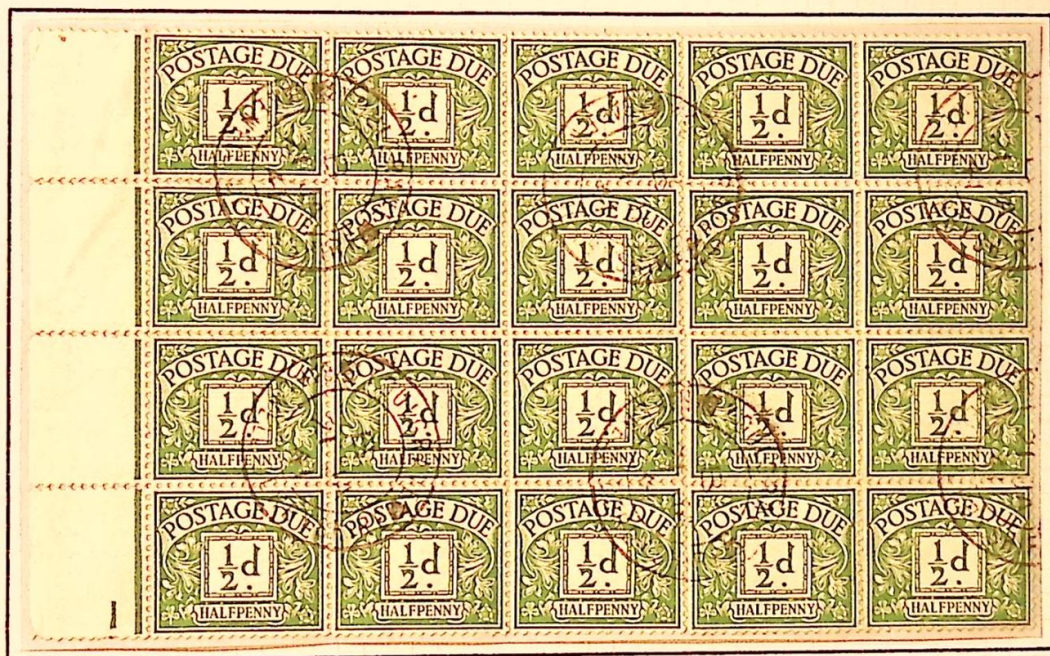
KING GEORGE VI
POSTAGE DUE STAMPS

1937 - 1938



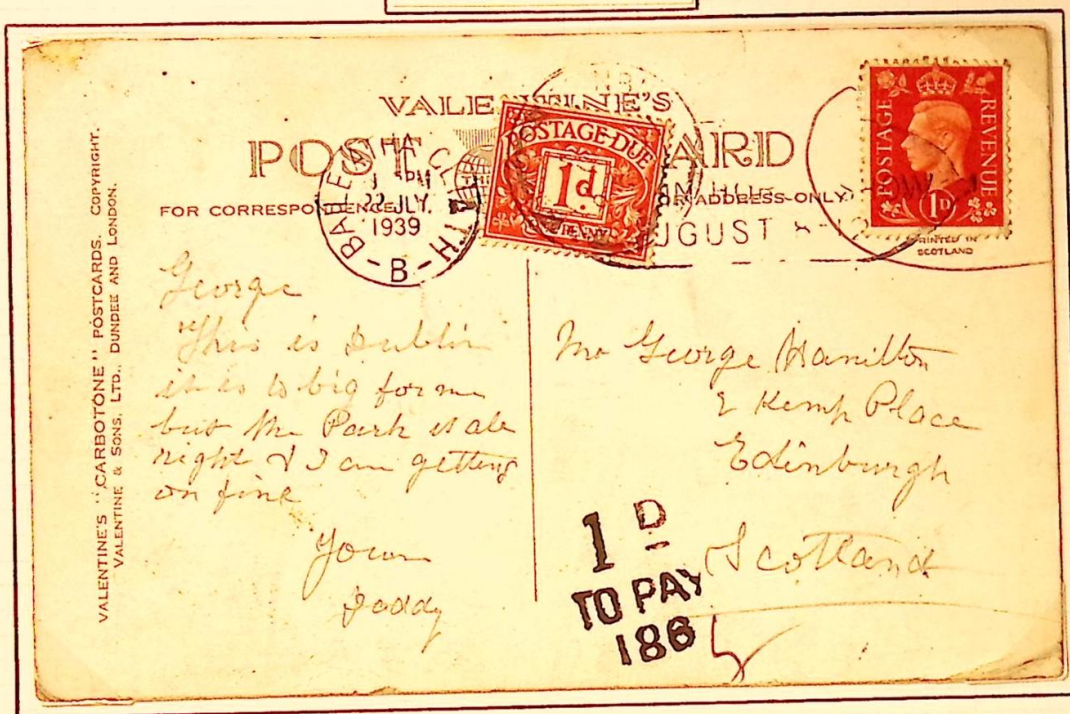
Typographed by Harrison and Sons. Perforation 14 X 15.
Watermark Crown over G VI R sideways.

POSTAGE DUE STAMPS



Block of twenty $\frac{1}{2}$ d. emerald green postage due stamps, perforation 14 X 15. Watermark Crown over G VI R sideways (in use from 1937 to 1952) Typographed in sheets of 240 by Harrison and Sons. Postmarked by a double-circle handstamp of Youlgreave, Derbyshire dated January 21st. 1941.

KING GEORGE VI
POSTAGE DUE STAMPS



Postcard posted in Dublin with a British King George VI one penny stamp used to prepay postage. The stamp was disallowed and 1d. TO PAY 186 mark applied at Dublin. One penny postage due stamp added and cancelled at Edinburgh on July 23rd. 1939.



Postcard from Essex to Sibbertoft in Northampton. The rate for a postcard was two pence hence the postage due stamp cancelled Sibbertoft, May 30th. 1948. The handstruck 2d. over 340 mark indicates two pence to pay and was applied at Harwich in Essex.

1902~10 King Edward VII.



Dull purple and green 21st. March 1902. ordinary paper.



Slate purple and green 21st. March 1902 ordinary paper.



pale dull purple and grn. Slate purple and grn.
August 1905 chalky paper chalky paper



Yellowish green and carmine
25th. March 1902 Ordinary paper



grey-green and carmine
1904 Ordinary paper

Pale grey-green and carmine
April 1906 chalky paper.

Pale grey-green and carm.



pale grey-green and scarlet.
1909 paper chalky.

Dull blue-green and carmine
1907 paper chalky.

Printed by De La Rue and Co . Watermark Imperial Crown . perforation 14.

1902-10 King Edward VII.



Green and grey-brown, ordinary paper.
27th March 1902.



Green and chocolate-brown
ordinary paper. 1st. Nov. 1909.

Green and chocolate-brown
chalky paper. Jan. 1906.



Deep green and chocolate-brown, chalky paper.



Brown-orange.
1st. Nov. 1909.



Pale orange, Dec. 1909.



Orange-red, Dec. 1909.
All the orange issue on ordinary paper.

Printed by De La Rue and Co. Watermark Imperial Crown. perforation 14.

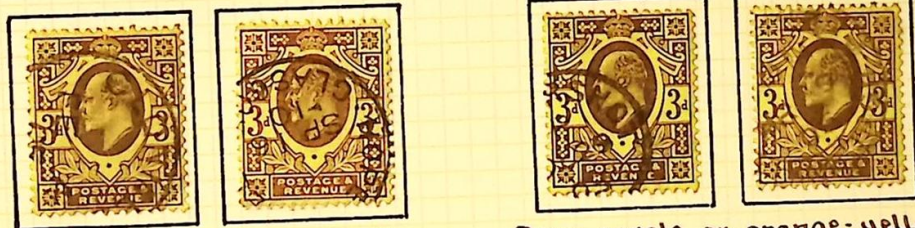
1902-10 King Edward VII.



Ultramarine, ordinary paper.
1st. January 1902.



Pale ultramarine, ordinary paper.



Dull purple on orange-yellow
ordinary paper 20th. March 1902.

Deep purple on orange-yellow
ordinary paper.



Pale reddish purple on orange-yellow
chalky paper. March 1906.



Dull purple on orange-yellow.
chalky paper.



Dull reddish-purple on yellow-lemon.
chalky paper.



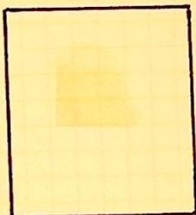
Pale purple on lemon.
chalky paper.



Purple on lemon
chalky paper.

Printed by De la Rue and Co. Watermark Imperial Crown. Perforation 14.

1902-10 King Edward VII.



Grey - black 4th. May 1910.
Ordinary paper.



Dull-purple and ultramarine.
Ordinary paper 7th. April 1902.

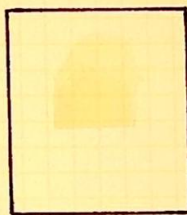
Slate-purple and ultramarine.
Ordinary paper.



Dull-purple and ultramarine.
Chalky paper.

Printed by De La Rue and Co. Watermark Imperial Crown. Perforation 14.

1902-10 King Edward VII.

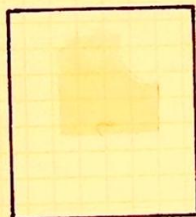


Dull-purple and ultramarine. 14th. May 1902.
Ordinary paper.



Dull-purple and ultramarine.
Chalky paper. May 1906.

Slate-purple and ultramarine.
Chalky paper.



Slate-purple. Ordinary paper.



Dull purple
Ordinary paper.



Pale-dull purple.
Chalky paper Jan. 1906.

1902-10 King Edward VII.



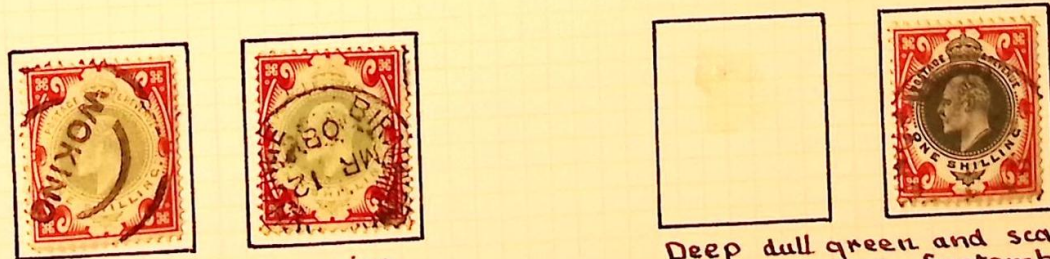
Dull purple and carmine 3rd July 1902.
Ordinary paper.



Dull purple and carmine.
Chalky paper. September 1910.



Dull green and carmine. Ordinary paper 24th March 1902.



Dull green and carmine
Chalky paper. September 1905.

Deep dull green and scarlet.
Chalky paper. September 1910.

Printed by De La Rue and Co. Watermark Imperial Crown. Perforation 14.

GREAT BRITAIN

1911

May 3rd.



dull yellow-green



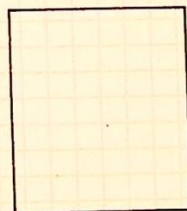
dull green



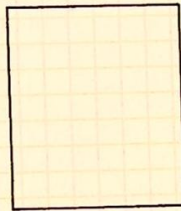
deep dull green



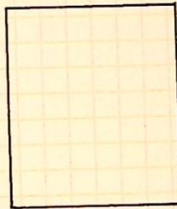
deep dull yellow-grn
very blotchy print



pale bluish green



bright green



deep bright green



pale blue



rose-red



deep rose-red



intense rose-red



pale rose-carmine



rose-carmine



deep rose-carmine

Perforation 14

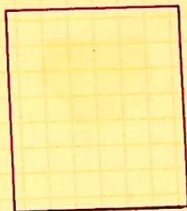
Watermark Imperial Crown

Printed by Harrison & Sons Ltd., on ordinary paper. It is probable that the plates which were handed over to Harrison and Sons were resurfaced before use. The lines in the reining of the leaves, and the lines on the King's neck are noticeably strengthened.

GREAT BRITAIN

1902-10

King Edward VII.



dull purple & ultra.
ordinary

slate-purple & ultra.
paper

dull purple & ultra.
chalk-surfaced

slate-purple & ultra.
paper



pale dull purple
ordinary

slate-purple
paper

pale dull purple

dull purple
chalk-surfaced paper.

slate-purple



grey-black

Perforation 14.

Surface printed by
ordinary and chalk-surfaced

messers De la Rue & Co., Ltd., on both
paper.

Watermark Imperial Crown.

GREAT BRITAIN

1902-10

King Edward VII.



dull blue-green



blue-green



deep blue-green



pale yellowish green



yellowish green



scarlet



bright scarlet



deep bright scarlet



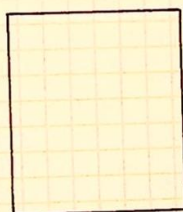
rose-carmine



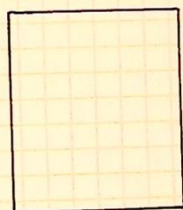
dull purple & green
ordinary paper



slate-purple & green
ordinary paper



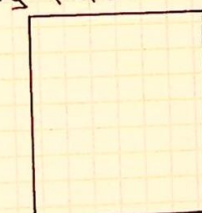
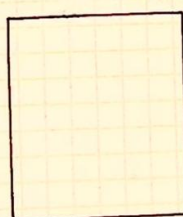
pale dull purple & green
chalk-surfaced paper



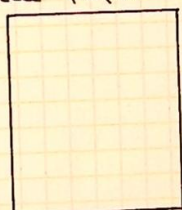
slate-purple & bluish grn.
chalk-surfaced paper



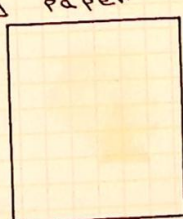
deep slate-purple
& bluish grn.



grey-grn. & carmine



chalk-surfaced paper



grey-grn. & scarlet.
chalk-surfaced paper.



deep grey-grn & scarlet
chalk-surfaced paper.

Perforation 14

Surface printed by Messrs De la Rue & Co Ltd., on both ordinary paper and chalk-surfaced paper.

Watermark Imperial Crown.

KING EDWARD VII
1902 - 1910



Dull blue-green January 1st. 1902



Blue-green



Watermark
inverted.

Pale yellowish green
November 26th. 1904



Yellowish green

Design by E. Fuchs. Surface printed on ordinary paper by De La
Rue and Co. Ltd. Watermark Imperial Crown. Perforation 14.

KING EDWARD VII
1902 - 1910



Scarlet January 1st. 1902



Deep bright scarlet



Rose-carmine

Design by E. Fuchs. Surface printed on ordinary paper by De La Rue and Co. Ltd. Watermark Imperial Crown. Perforation 14.

STANLEY GIBSON'S PATENT SYSTEM FOR THE PRODUCTION OF STAMPS AND PRINTED IN ENGLAND

KING EDWARD VII
ARMY OFFICIAL OVERPRINTS
FEBRUARY 11th. 1902



August 23rd. 1902

Stamps printed and overprinted by Thomas De La Rue and
Company. Watermark Imperial Crown. Perforation 14.

Post Card

Mr James Hanna
- Carpenter
Ballygowan.



LIABLE TO LETTER RATE

62

1D

1904 Card from Comber to Ballygowan. $\frac{1}{2}$ d. Edward VII adhesive cancelled by a Comber double-circle datestamp for November 4th, 1904. Because the card is of the pull out novelty type it was liable to letter rate of $1\frac{1}{2}$ d. The boxed 62 instructional mark and large 1D. (postage due) were applied at Belfast.

POST CARD

FOR INLAND POSTAGE ONLY THIS SPACE
AS WELL AS THE BACK, MAY NOW BE USED
FOR COMMUNICATION.
(Post Office Regulation).

THE ADDRESS ONLY TO BE
WRITTEN HERE

LIABLE TO LETTER RATE

62

Mrs Wm. Dawson

Castle St-

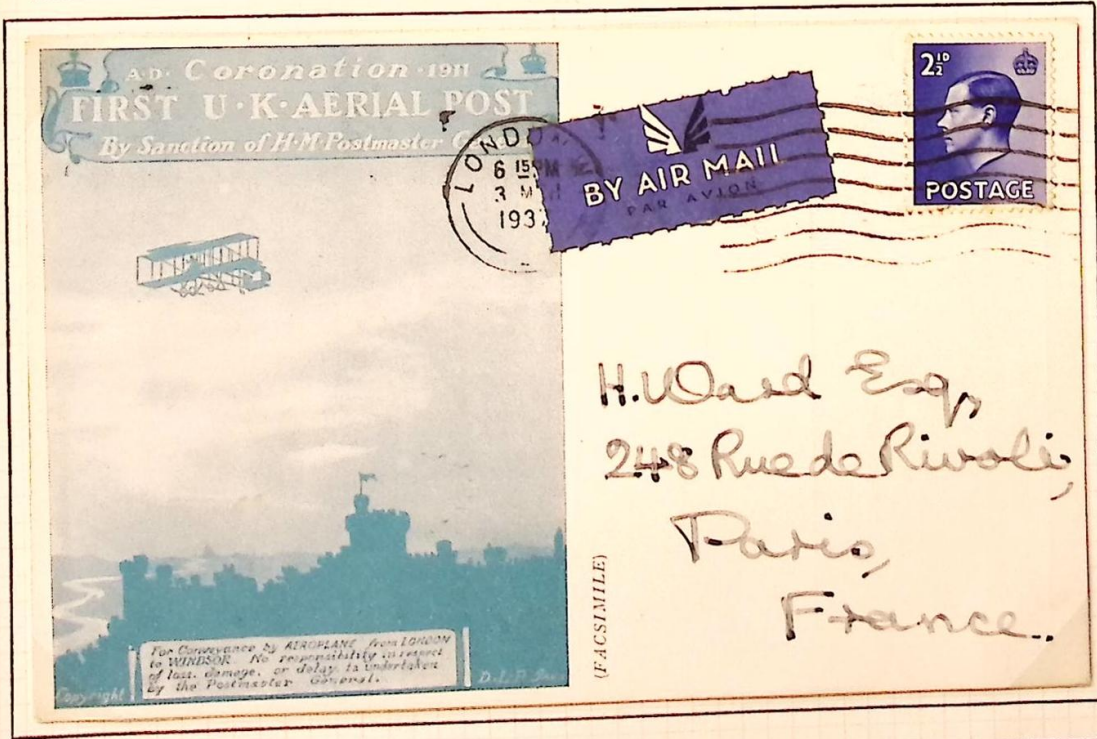
Newtownards



1906 Card from Belfast to Newtownards similar to the top one, surcharged at Belfast because there is tinsel decoration on the face of the card. $\frac{1}{2}$ d. Edward VII adhesive cancelled by a Belfast handstamp with the office numeral 12 flanked by twin arcs at the bottom. Dated February 5th, 1906.



FIRST UNITED KINGDOM AERIAL POST handstamp on special postcard, used for flights from London to Windsor from 9th. to 15th. September 1911. Six handstamps used, numbered 1 to 6. Handstamp dated September 15th. (Last day of use).



Facsimile of the official post card issued for the Coronation Air Mail of King George V (London to Windsor, September 1911). Published by "Stamp Collecting" as a souvenir of the AIR MAIL EXHIBITION held from 15th. to 20th. February 1937. Postmarked London 3rd. March 1937.

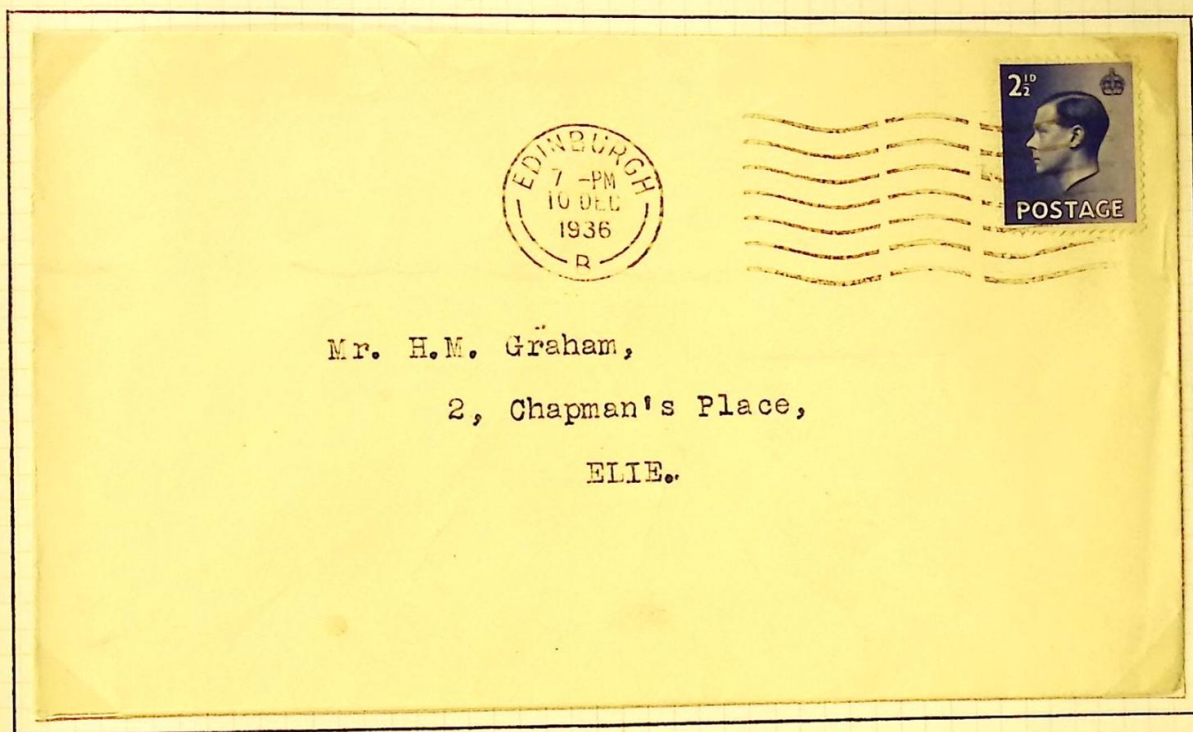
KING EDWARD VIII
20th. JANUARY - 10th. DECEMBER 1936



Watermark inverted.

Design by H. Brown, adapted by Harrison using a photograph
by Hugh Cecil. Printed in photogravure by Harrison and Sons.
Watermark Multiple Crown over E 8 R. Perforation 15 X 14.

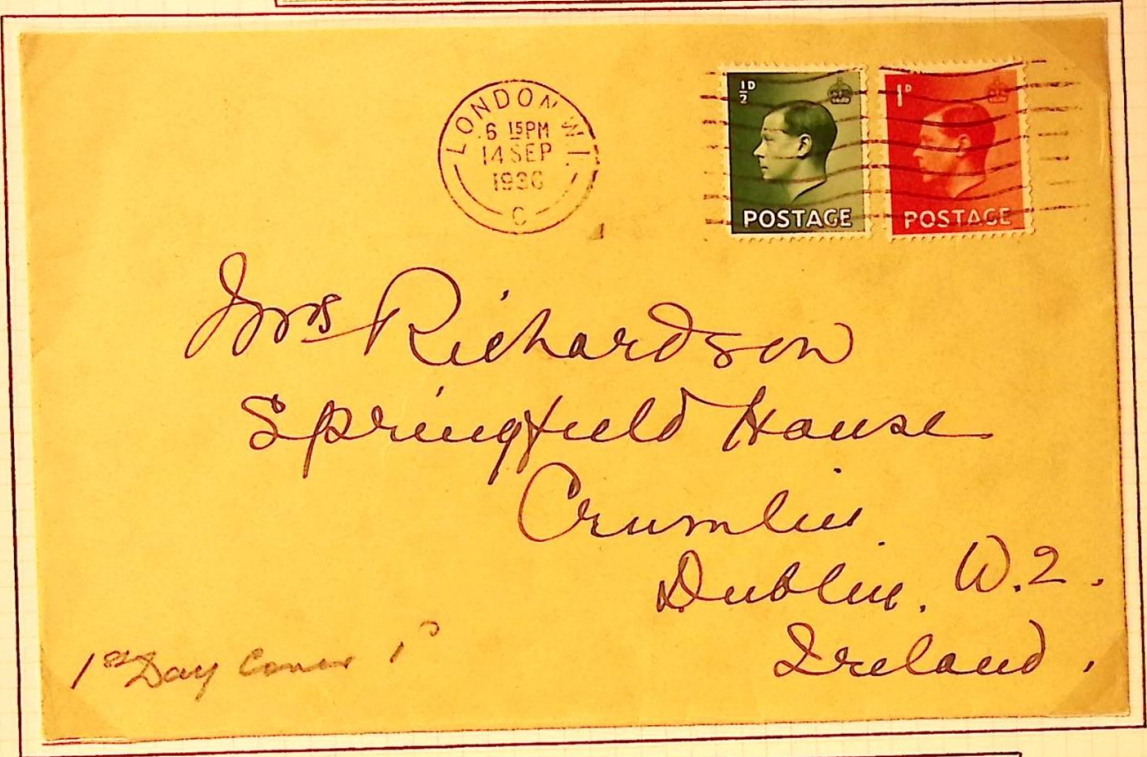
ABDICATION OF EDWARD VIII
DECEMBER 10th. 1936



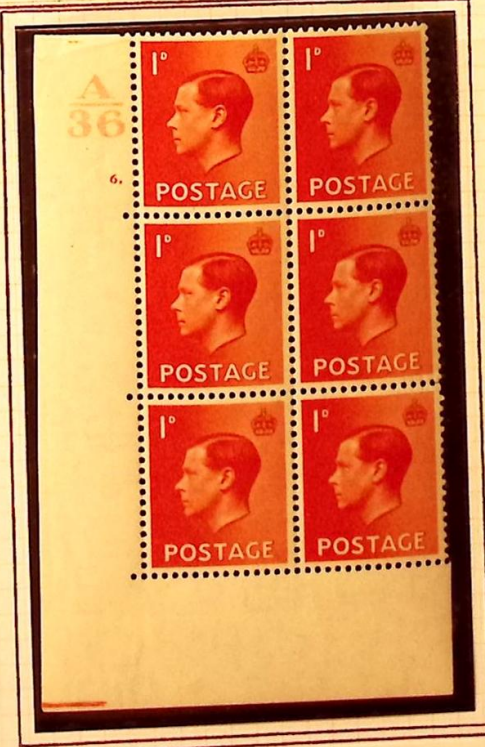
Cover posted on Abdication Day cancelled Edinburgh 7 p.m.
10th. December 1936. The reign of King Edward VIII was the
shortest in 453 years of English Monarchy.



KING EDWARD VIII
20th. JANUARY - 10th. DECEMBER 1936



First Day Cover for penny value 14th. September 1936.



Design by H. Brown, adapted by Harrison using a photograph by Hugh Cecil. Printed in photogravure by Harrison and Sons. Watermark Multiple Crown over E 8 R. Perforation 15 X 14.

KING EDWARD VIII
20th. JANUARY - 10th. DECEMBER 1936



First Day Cover 1st. September 1936.



Design by H. Brown, adapted by Harrison using a photograph
by Hugh Cecil. Printed in photogravure by Harrison and Sons.
Watermark Multiple Crown over E 8 R. Perforation 15 X 14.

January 10th.

1990

Penny Black
Anniversary Definitives



Special definitives issued to mark the 150th anniversary of the introduction of the penny post and subsequent issue of the first adhesive postage stamps, the famous Penny Black and Two Penny Blue. They show the Machin portrait of Her Majesty The Queen with the Wyon head of Queen Victoria behind.

Printed in photogravure by Harrison & Sons Ltd.
Perforation 15 x 14.

JUNE 3rd. 1953
CORONATION OF QUEEN ELIZABETH II



First Day Cover.
Handstamped EALING B. O. 3rd. June 1953.



Designs by E. G. Fuller 2½d., Michael Goaman 4d., Edmund Dulac 1/3 and M. C. Farrar-Bell 1/6. Queen's portrait by Dorothy Wilding (except 1/3). Printed in photogravure by Harrison and Sons Ltd. Watermark Tudor Crown over E 2 R. Perforation 15 X 14.

JUNE 3rd. 1953
CORONATION OF QUEEN ELIZABETH II



Daffodil leaf flaw : Small white dot on end of daffodil leaf. Found on row 19 stamp 1 on sheets with cylinder number 1 no dot.

Designs by E. G. Fuller 2½d., Michael Goaman 4d., Edmund Dulac 1/3, and M. C. Farrar-Bell 1/6. Queen's portrait by Dorothy Wilding (except 1/3). Printed in photogravure by Harrison and Sons Ltd. Watermark Tudor Crown over E 2 R. Perforation 15 X 14.

CORONATION OF QUEEN ELIZABETH II
JUNE 3rd. 1953

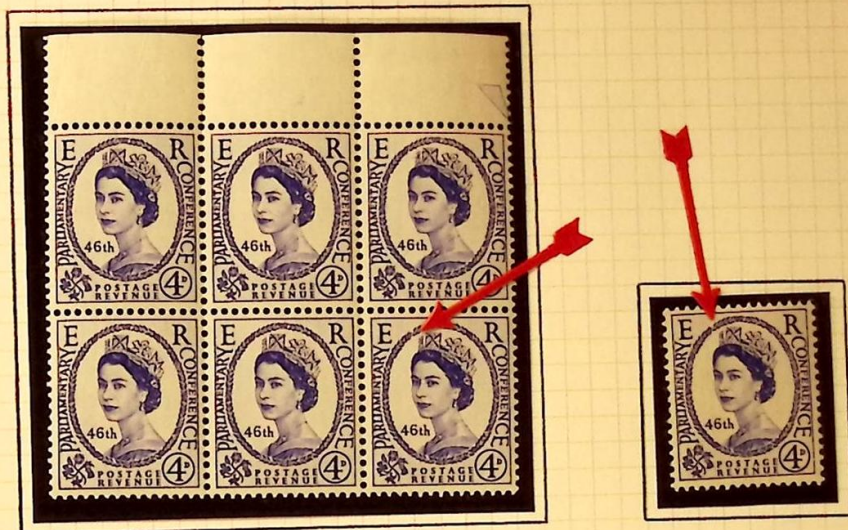
R
No 3360
Thames Ditton 1



J. W. H. DICKMAN
34 PROSPECT RD
LONE DITTON
SURBITON SURREY

Constant variety : One of the pearls which surround the Orb at the top right hand side is missing. When this was later retouched it added another pearl and altered the shape and size of the others. Found on row 1 stamp 4, cylinder 3.

SEPTEMBER 12th. 1957
46th. INTER-PARLIAMENTARY UNION CONFERENCE



On row 1 stamp 5 there is a blue blob over the last "N" of Conference and on the same row stamp 6 has the outline of the left hand jewel in the diadem incomplete. On row 2 stamp 6 the wreath has a break in it at the 11 o'clock position.

First Day Cover.
12th September, 1957.

Rev. William Jackson.
The Manse,
GLENAVY,
Lisburn,
Co. Antrim.



The design is the same as the definitive issue by M. C. Farrar-Bell with added lettering, Queen's portrait by Dorothy Wilding. Printed in photogravure by Harrison and Sons Ltd. Watermark St. Edward's Crown over E 2 R. Perforation 15 X 14.

JULY 18th. 1958
SIXTH BRITISH EMPIRE AND COMMONWEALTH GAMES



Commemorating the 1958 Empire and Commonwealth Games held at Cardiff.
Designs by Reynolds Stone 3d., W. H. Brown 6d., and Pat Keely 1/3.
Queen's portrait from a photograph by Dorothy Wilding. Photogravure
printed by Harrison and Sons Ltd. Watermark St. Edward's Crown over
E 2 R. Perforation 15 X 14.

JULY 7th. 1960
 TERCENTENARY OF ESTABLISHMENT OF
 "GENERAL LETTER OFFICE"



Row 1 stamp 18 white bulge inside "0" of 1960.
 Found on sheets printed from cylinder 1 no dot.

Charles II Act of 1660 established the G. P. O., and was the first of a long series of laws for the regulation of postal matters. Designs by Reynolds Stone 3d., Faith Jaques 1/3. Queen's portrait by Dorothy Wilding. Printed in photogravure by Harrison and Sons Ltd. Watermark Multiple Crowns (sideways on 1/3 value). Perforation 15 X 14.

AUGUST 28th. 1961
CENTENARY OF POST OFFICE SAVINGS BANK



First Day Cover : Handstamped Stranmillis Road, Belfast.

Designs by P. Gauld 2½d., M. Goaman 3d., and 1/6. Photogravure printed by Harrison and Sons Ltd. Two types of printing machines were used, the Timson machine which is a single pane reel-fed machine and the Thrissell machine which is a double pane reel-fed machine. Watermark Multiple Crowns (sideways on 2½d. value). Perforation 15 X 14.

AUGUST 28th. 1961
CENTENARY OF POST OFFICE SAVINGS BANK

"TIMSON" Machine Printing.



Deeply shaded portrait, dull black in colour.

Clear, well-defined portrait with deep shadows and bright high-lights.

"THRISSELL" Machine Printing.



Lighter portrait, grey-black in colour.

Dull portrait, lacking in contrast.

Designs by P. Gault 2½d., and M. Goaman 3d. Photogravure printed by Harrison and Sons Ltd. Two types of printing machines were used, the Timson machine which is a single pane reel-fed machine and the Thrissell machine which is a double pane reel-fed machine. Watermark Multiple Crowns (sideways on 2½d. value). Perforation 15 X 14.

SEPTEMBER 18th. 1961
 EUROPEAN POSTAL AND TELECOMMUNICATIONS
 (C.E.P.T.) CONFERENCE



Row 18 stamp 6, hairline extending from right-hand frame to sheet margin. Found on sheets printed from cylinders 1A-1B-1C dot.

Designed by Michael Gooman, doves by T. Kurpeschoek, Queen's portrait from a photograph by Dorothy Wilding. Printed in photogravure by Harrison and Sons Ltd. Watermark Multiple Crowns. Perforation 15 X 14.

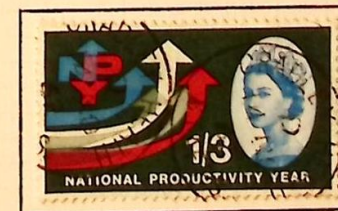
STANLEY GIBSON'S PUBLICATIONS LTD. LONDON AND BIRMINGHAM MADE AND PRINTED IN ENGLAND

SEPTEMBER 25th. 1961
SEVENTH COMMONWEALTH PARLIAMENTARY CONFERENCE



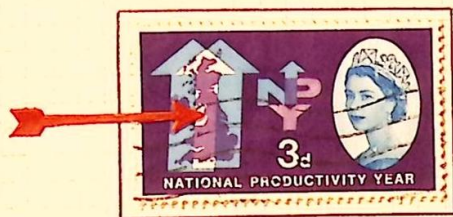
Designs by Faith Jaques, Queen's portrait from a photograph by Dorothy Wilding. Photogravure printed by Harrison and Sons Ltd. Watermark Multiple Crowns (sideways on 1/3 value). Perforation 15 X 14.

NOVEMBER 14th. 1962
NATIONAL PRODUCTIVITY YEAR



Designs by David Gentleman, Queen's portrait from a photograph by Dorothy Wilding. Photogravure printed by Harrison and Sons Ltd. Watermark Multiple Crowns (inverted on 2½d. and 3d.). Perforation 15 X 14.

NOVEMBER 14th. 1962
NATIONAL PRODUCTIVITY YEAR



Lake in Yorkshire variety. Found on row 19 stamp 1
on sheets with cylinder numbers 2C-2B dot.



Colour shift : Green colour printing
shifted 1 mm downwards.



Variety : Kent omitted. Found on row 18 stamp 2
on sheets with cylinder numbers 2C-2B no dot.



Lake in Scotland variety. Found on row 1 stamp 3
on sheets with cylinder numbers 2A-2B dot.

Designs by David Gentleman, Queen's portrait from a photograph by Dorothy Wilding. Photogravure printed by Harrison and Sons Ltd. Watermark Multiple Crowns inverted. Perforation 15 X 14.

MAY 31st. 1963
NINTH INTERNATIONAL LIFE-BOAT CONFERENCE



Ordinary printing without phosphor bands.




Phosphor printing with one side band on the 2½d. value and three bands on the other two values. All phosphor bands typographed.

Designs by David Gentleman, Queen's portrait from a photograph by Dorothy Wilding. Printed in photogravure on chalky paper by Harrison and Sons Ltd. Watermark Multiple Crowns. Perforation 15 X 14.

DECEMBER 3rd. 1963
OPENING OF "COMPAC"





1963
Opening of



PACIFIC OCEAN

First Trans-Pacific
TELEPHONE CABLE

Mr. W. J. O'Hara,
134 Stranmillis Rd.,
Belfast 12.

Design by P. Gauld, Queen's portrait from a photograph by Dorothy Wilding.
Photogravure printed on chalky paper by Harrison and Sons Ltd. Watermark
Multiple Crowns. Perforation 15 X 14.

STANLEY GIBBONS RING 22 ALBUM LEAF No. 5843 (F. 2899) (London) MADE AND PRINTED IN ENGLAND

DECEMBER 3rd. 1963
OPENING OF "COMPAC"

Philatelic Bulletin No. 3 - November, 1963

CONTENTS

New issues

More details of the Compac issue
£1 permanent series

Stamp printing contracts
The printing of air letter forms
Exhibitions
Christmas gifts
Postmark slogan check list

THE COMPAC SPECIAL ISSUE

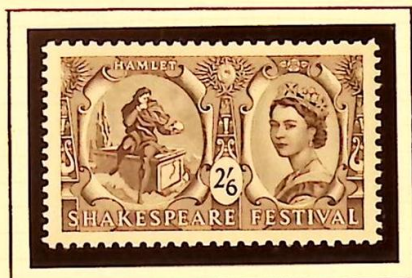


1. The stamp will be put on sale on December 3rd, and we thought that our mailing list subscribers would like to have a preview in colour. Technical problems and costs of colour reproduction have led us to use a "cancelled" copy of the stamp itself. Even in this form we hope that people will agree that this attractive and colourful stamp is well up to the standards of this year's other issues.

The front page of the British Post Office Philatelic Bulletin number 3, with a copy of the "COMPAC" stamp unused but stuck down and handstamped "CANCELLED" in red by the Post Office.

Design by P. Gauld, Queen's portrait from a photograph by Dorothy Wilding. Photogravure printed on chalky paper by Harrison and Sons Ltd. Watermark Multiple Crowns. Perforation 15 X 14.

APRIL 23rd. 1964
SHAKESPEARE FESTIVAL



Deep slate-purple

Blackish brown



The 3d. to 1/6 values were designed by David Gentleman and printed in photogravure by Harrison and Sons Ltd., the 2/6 value was designed by Christopher and Robin Ironside and recess-printed by Bradbury Wilkinson and Co. Watermark Multiple Crowns. Perforation 11 X 12 (2/6 value), 15 X 14 others.

JULY 1st. 1964
20th. INTERNATIONAL
GEOGRAPHICAL CONGRESS



Corner of sheet showing two constant flaws.
Horizontal black line joining centre of 2 to
left frame line, row 1 stamp 1 and a small
black spur on frame line below last 'S' in
Congress, row 1 stamp 2.



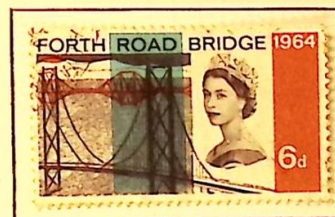
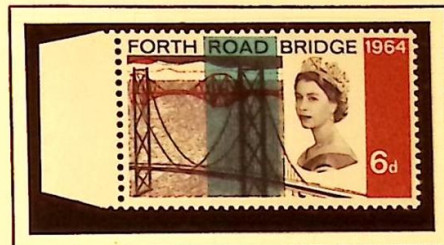
Small black spur on frame
line under right leg of 'N'
of Congress, row 1 stamp 6.



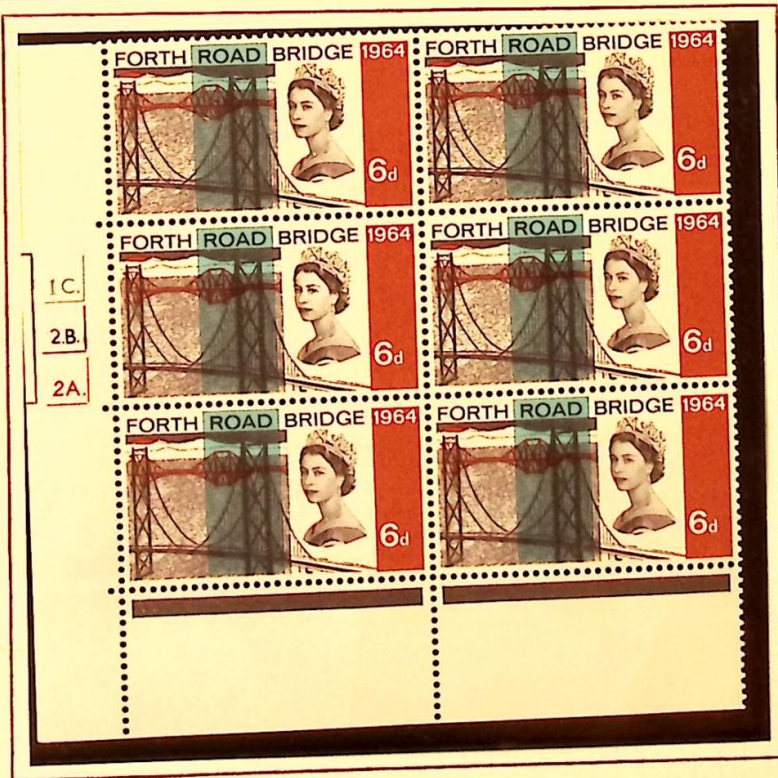
Plate block of the ohosphor printing showing the 'Scarred Neck' flaw,
row 20 stamp 3. There are also two minor constant flaws on row 20
stamp 2 : a black spot above Queen's nostril and a break in vertical
frame line to left of value.

Photogravure printed on chalky paper by Harrison and Sons Ltd.
Watermark Multiple Crowns. Perforation 15 X 14.

SEPTEMBER 4th. 1964
OPENING OF FORTH ROAD BRIDGE



Watermark inverted.



Constant flaw : Spot on '3'
found on sheets printed
from cylinder 2 A dot, row
15 stamp 1.

Designed by Andrew Restall. Issued to commemorate the opening of the Forth Road Bridge. Photogravure printed by Harrison and Sons Ltd. Watermark Multiple Crowns. Perforation 15 X 14.

JULY 19th. 1965
700th. ANNIVERSARY OF
SIMON DE MONTFORT'S PARLIAMENT



Design: Simon de Montfort's
Seal by S. R. Black



Design : Parliament Buildings (after an engraving
by Hollar, 1647) by Professor R. Guyatt.



Phosphor printing of the 6d. value : Three phosphor
bands on each stamp. Applied by photogravure.

Photogravure printed on chalk-surfaced paper by Harrison and
Sons Ltd. Watermark Multiple Crowns. Perforation 15 X 14.

SEPTEMBER 1st. 1965
COMMONWEALTH ARTS FESTIVAL



Trinidad Carnival Dancers



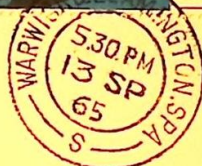
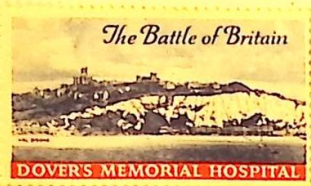
Canadian Folk-dancers



Designs by David Gentleman and Rosalind Dease. Photogravure printed on chalk-surfaced paper by Harrison and Sons Ltd. Watermark Multiple Crowns. Perforation 15 X 14.

SEPTEMBER 13th. 1965
25th. ANNIVERSARY OF BATTLE OF BRITAIN

FIRST DAY COVER



Mr S. G. Austen

12 Gaveston Close

Warwick

Cover posted on day of issue with stamp showing "Hurricanes over Wreck of Dornier 'DO-17 Z 22' Bomber". This stamp when issued was called "The Swastika Stamp" by some members of the public.



Don't buy
the Swastika
stamp!

Mr. M. L. Biotter,
25, The Close,
Llewellyn Rd.,
LEAMINGTON SPA

Warwickshire.

Cover with stamp showing "Flight of Spitfires" and label "Don't buy the Swastika stamp" cancelled on day of issue at Birmingham. There was still quite a lot of anti Nazi feelings in Britain when this issue came out and a private source issued these labels.

OCTOBER 25th. 1965
20th. ANNIVERSARY OF THE UNITED NATIONS



FIRST DAY COVER



Mr S. G. Austen

12 Gaveston Close

WARWICK

Design by Jeffrey Matthews. Printed in photogravure by Harrison and Sons Ltd. Watermark Multiple Crowns. Perforation 15 X 14.

FEBRUARY 28th. 1966
900th. ANNIVERSARY OF WESTMINSTER ABBEY



White dot in diadem appearing like a pearl. Found on row 16 stamp 2 from sheets with cylinder numbers 2A-1B-1C no dot.



Retouch on Queen's cheek. Found on row 15 stamp 6 on sheets with cylinder numbers 2A-1B-1C dot.

The 3d. value designed by Sheila Robinson is photogravure printed on chalky paper by Harrison and Sons Ltd. Perforation 15 X 14. The 2/6 value designed and engraved by Bradbury, Wilkinson and Company is recess printed. Perforation 11 X 12. Both Watermark Multiple Crowns.

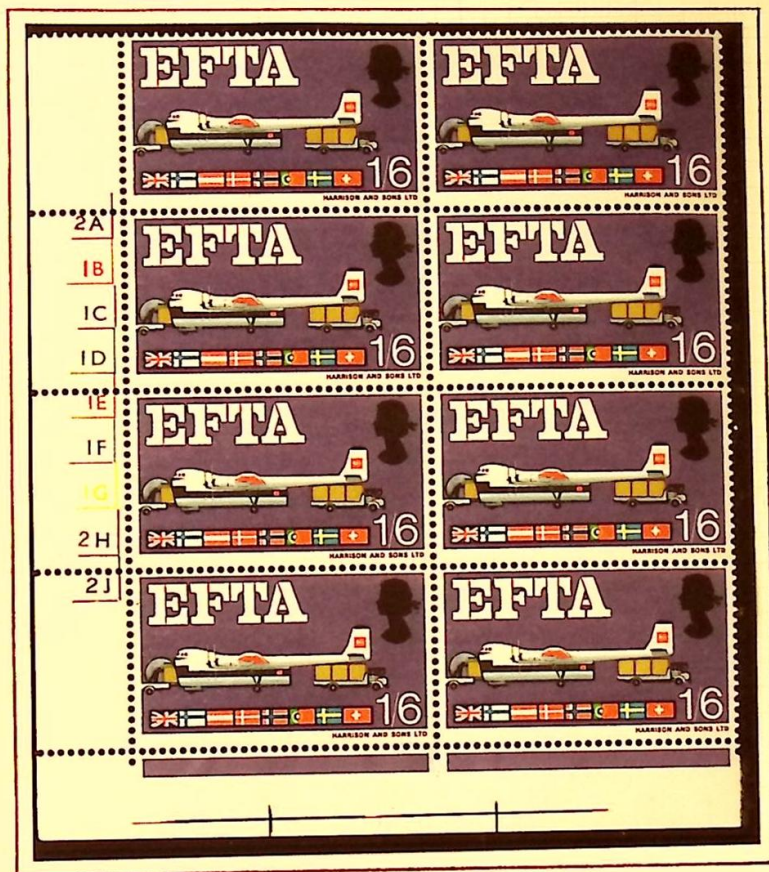
STANLEY SIEBING RING 22, ALBION LITHO, 2243 TICEBURY, NO. 3050 (HARRISON) MADE AND PRINTED IN ENGLAND

OCTOBER 14th. 1966
900th. ANNIVERSARY OF BATTLE OF HASTINGS



Designs by David Gentleman show battle scenes from the Bayeux Tapestry. Queen's portrait adapted from coinage. Photogravure printed on chalk-surfaced paper by Harrison and Sons Ltd. Watermark Multiple Crowns (sideways on 1/3). Perforation 15 X 14.

FEBRUARY 20th. 1967
EUROPEAN FREE TRADE ASSOCIATION



Small constant flaw : White spur
on 6 of 1/6, row 19 stamp 1.



Constant flaw : Broken strutt,
row 13 stamp 6.

Design by Clive Abbott. Photogravure printed on chalky paper by Harrison
and Sons Ltd. Watermark Multiple Crowns. Perforation 15 X 14.

AUGUST 12th. 1968
BRITISH PAINTINGS



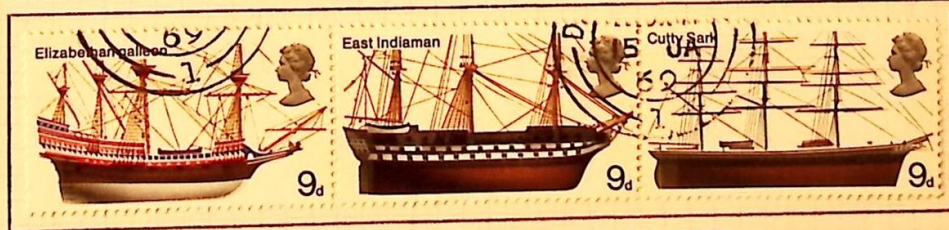
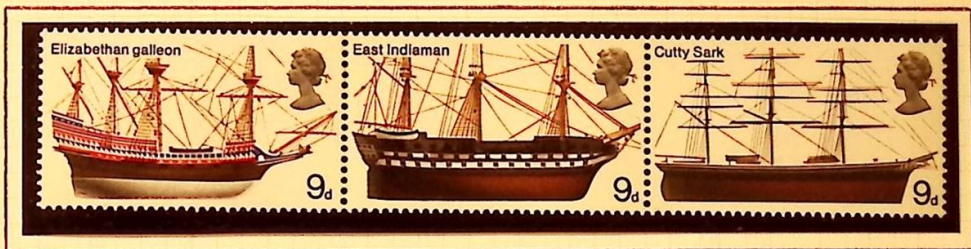
Missing colour : Vermilion omitted
leaving the face and hands white and
more yellow and olive in the costume.



Used copy with phosphor bands omitted.

Design from a portrait of Queen Elizabeth I, now in the National Portrait Gallery. It was painted about 1575, artist unknown. Printed in photogravure on chalk-surfaced paper with two phosphor bands by Harrison and Sons Ltd. Perforation 15 X 14.

JANUARY 15th. 1969
BRITISH SHIPS



STANLEY GIBBONS RING 22 ALBUM LEAF No. 3843 (Faced), No. 5850 (Unfac'd), MADE AND PRINTED IN ENGLAND

Designed by David Gentleman. Photogravure printed on chalk-surfaced paper by Harrison and Sons Ltd. The 9d. and 1/- values were printed se-tenant throughout the sheet. All issued with phosphor bands, two vertical bands at right on 1/- value, one horizontal band on 5d. value and two bands one at each side on the 9d. value. Perforation 15 X 14.

MAY 16th. 1963
NATIONAL NATURE WEEK

The "Caterpillar" flaw is so called because it shows a brown mark on the top daisy resembling a caterpillar crawling out of the flower.
Found on row 3 stamp 2 from sheets with cylinder numbers 1A-3B-1C-1D.



Mint phosphor block showing
the "Caterpillar" flaw.



Used block of the ordinary issue
showing "Caterpillar" flaw.

Designed by S. Scott. Printed on chalk-surfaced paper in photogravure
by Harrison and Sons Ltd. Watermark Multiple Crowns. Perforation 15 X 14.

DECEMBER 1st. 1966
CHRISTMAS ISSUE



Missing "T" flaw : The "T" of the designer's initial is missing on row 6 stamp 2 from sheets with cylinder numbers 1A-4B-1C-1D-1E no dot.



Queen's head printed high.



Queen's head misplaced towards the centre of the stamp.



Queen's head printed low.

Design by Tasveer Shemza (winner of a children's design competition for Britain's first adhesive Christmas stamps). Photogravure printed by Harrison and Sons Ltd. Watermark Multiple Crowns sideways. Perforation 14 X 15.

EUROPEAN FREE TRADE ASSOCIATION
 PHOSPHOR PRINTING
 FEBRUARY 20th. 1967



Missing colour : Brown omitted leaving the rail trucks in the foreground and the bag of freight on the ship white.



Quay Flaw : Black protuberance on quay between second and third truck. Row 8 stamp 3.



Strut Flaw : Strut below wing appears partly missing. Row 13 stamp 6.



Broken Ribbon Flaw : Upper ribbon on Queen's hair is broken. Row 11 stamp 3.

Design by Clive Abbott. Photogravure printed on chalky paper by Harrison & Sons. Watermark Multiple Crowns. Perforation 15 X 14.

SEPTEMBER 19th. 1967
BRITISH DISCOVERY AND INVENTION

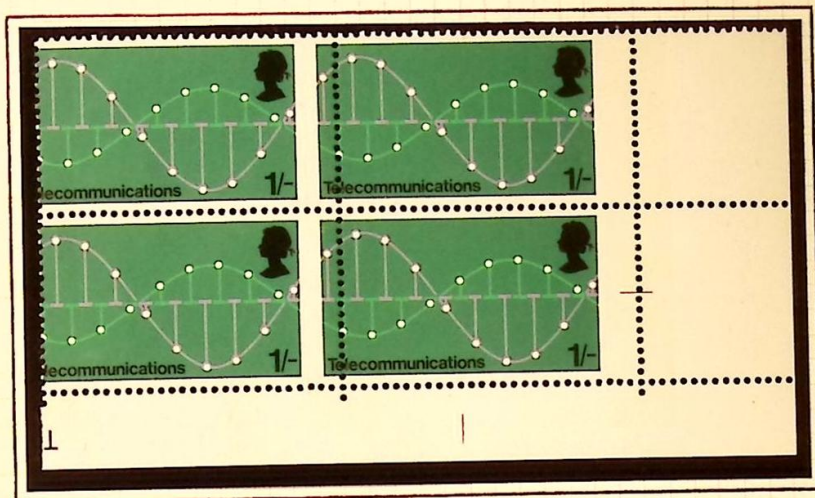
Radar : Robert Watson-Watt was the physicist
who perfected the radar scanner in 1935.



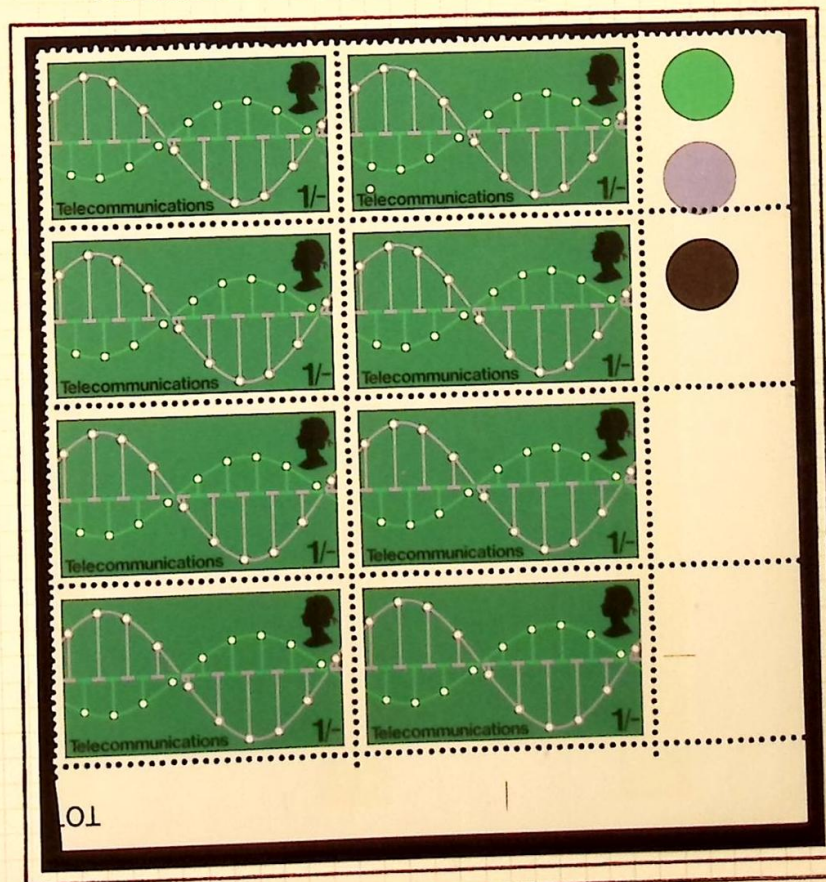
Major scale break at 104-106 degrees. Found on row 10 stamp 2
from sheets with cylinder numbers 1A-1B-1C no dot.

Design by Clive Abbott. Printed by photogravure on chalky paper
with three phosphor bands by Harrison and Sons Ltd. Watermark
Multiple Crowns. Perforation 15 X 14.

OCTOBER 1st. 1969
POST OFFICE TECHNOLOGY



Corner block showing perforation shift
of approximately 4 mm.



Design : Telecommunications - Pulse Code Modulation by David Gentleman.
Lithographed by De La Rue and Company. Two phosphor bands on each stamp
applied by typography. Comb perforation $13\frac{1}{2}$ X 14.

OCTOBER 13th. 1971
CHRISTMAS ISSUE



Paper fold causing perforation variety.



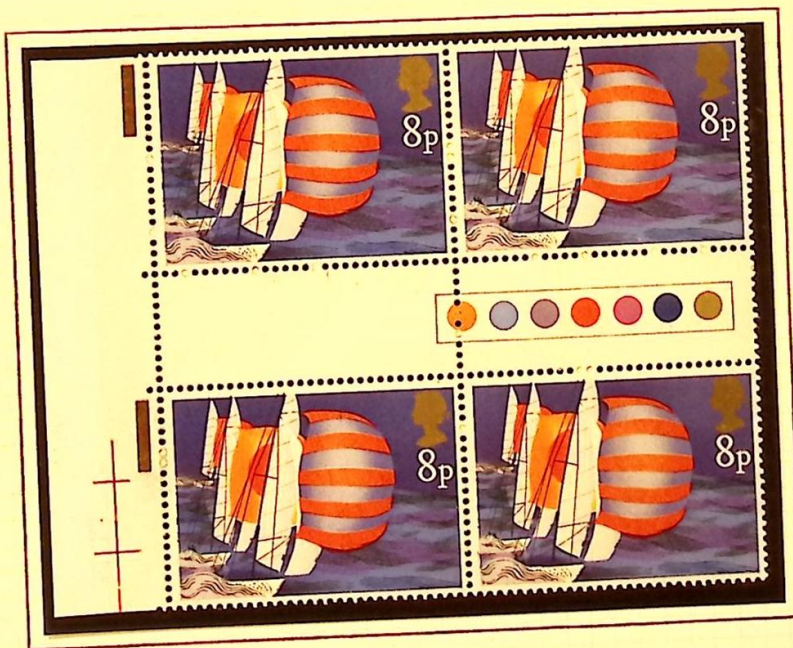
Design by Clarke-Clements-Hughes design team from stained-glass windows in Canterbury Cathedral. Printed in photogravure by Harrison and Sons Ltd. Perforation 15 X 14.

SHANEY CARSON'S PUBLICATIONS LTD. LONDON AND BIRMINGHAM. MANUFACTURED AND PRINTED IN ENGLAND.

SAILING BOATS
JUNE 11th. 1975



Missing colour : The recess-printed black colour
is completely omitted.



Design : Racing Keel Yachts by Andrew Restall. Recess and photogravure printed
on "All-over" phosphor paper by Harrison and Sons. Perforation 15 X 14.

JULY 9th. 1980
FAMOUS AUTHORESSES
CHARLOTTE BRONTË

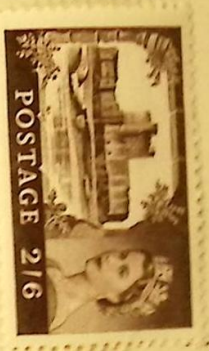


Variety : Missing "P" in value.
Row 4 stamp 6.

Designed by Barbara Brown and printed in photogravure on unwatermarked,
phosphor treated paper by Harrison and Sons Ltd. Perforation 15 X 14.

GREAT BRITAIN

1955



Leeds Castle



Leeds Castle



Edinburgh Castle



Windsor Castle

Old printing

1.00
1.00

3.50
2.50

2.00
2.50

1.00

1.00

GREAT BRITAIN

1955-58



23-9-55



23-9-55



CARRICKFERGUS CASTLE.

RECESS PRINTED BY WATERLOW & SONS, LTD.



1-5-58



PERF. 11x12 COMB

DESIGNED BY L. LAMB.

PRINTED BY DE LA RUE & CO, LTD. IN SHEETS OF 40 (4x10)

WATERMARK ST. EDWARD'S CROWN
PORTRAIT BY DOROTHY WILDING LTD

MADE IN ENGLAND BY THE REGISTERED PROPRIETORS OF THE TRADE MARK "SWING-O-RING" FOR STANLEY GIBBONS LTD
"SWING-O-RING" ALBUM LEAF No. 3290

GREAT BRITAIN

1967-68

July 7th 1968.



Carrickfergus Castle, Northern Ireland.

April 16th 1968.



Caernarvon Castle, Wales.

April 16th 1968.



Edinburgh Castle, Scotland.

December 12th 1967.



Windsor Castle, England.

No Watermark.

Perforation 11 x 12 comb.

Designed by H. Lamb. Portrait by Dorothy Wilding Ltd.

Recess printed in sheets of 40 by Messrs Bradbury Wilkinson and Co. Ltd., on unwatermarked white paper.

GREAT BRITAIN

1959



PRINTED BY:
BRADBURY WILKINSON

2-7-63.

PRINTED BY DE LA RUE & CO. LTD.
22-7-59 15-6-59



21-7-59.



30-6-59.

PRINTED BY DE LA RUE & CO. LTD.



DESIGNED BY L. LAMB
PERF 11x12 COMB.

PORTRAIT BY DOROTHY WILDING LTD. SHEETS 40 (4x10)
WATERMARK MULTIPLE CROWNS.

BRADBURY, WILKINSON PRINTINGS ARE MORE DEEPLY ENGRAVED THAN
THE DE LA RUE, SHOWING MORE OF THE DIADEM DETAIL AND HEAVIER
LINES ON HER MAJESTY'S FACE. THE VERTICAL PERFORATION
IS 11.9 AS AGAINST DE LA RUE, AT 11.8.

MADE IN ENGLAND BY THE REGISTERED PROPRIETORS OF THE TRADE MARK "SWING-O-RING" FOR STANLEY GIBBONS LTD.
"SWING-O-RING" ALBUM LEAF No. 3290



MADE IN ENGLAND BY THE REGISTERED PROPRIETORS OF THE TRADE MARK "SPRING-CORNING" FOR STANLEY GORDON LTD.
"SPRING-CORNING" ALBUM LEAF NO. 1289

1952 - 1954
 QUEEN ELIZABETH II



Designs by : Enid Marx ($\frac{1}{2}$ d. to 2d.), M. C. Farrar-Bell ($2\frac{1}{2}$ d. to 4d.),
 G. Knipe (5d. to 7d.), Mary Adshead (8d. to 11d.) and Edmund Dulac
 (1/- to 1/6). Queen's portrait from a photograph by Dorothy Wilding.
 Photogravure printed by Harrison and Sons Ltd. Watermark multiple
 Tudor Crown over E 2 R. Perforation 15 X 14.

1952 - 1954
 QUEEN ELIZABETH II



Designs by: Enid Marx (½d. to 2d.), M.C. Farrar-Bell (2½d. to 4d.), G. Knipe (5d. to 7d.), Mary Adshead (8d. to 11d.) and Edmund Dulac (1/- to 1/6). Queen's portrait from a photograph by Dorothy Wilding. Photogravure printed by Harrison and Sons Ltd. Watermark multiple Tudor Crown over E 2 R. Perforation 15 X 14.

1952 - 1954
QUEEN ELIZABETH II



Watermark inverted.



Watermark sideways.

Designs by: Enid Marx ($\frac{1}{2}$ d. to 2d.) M.C. Farrar-Bell ($2\frac{1}{2}$ d.).
Queen's portrait from a photograph by Dorothy Wilding.
Photogravure printed by Harrison and Sons Ltd. Watermark
multiple Tudor Crown over E 2 R. Perforation 15 X 14.

1955 - 1958
 QUEEN ELIZABETH II



Designs by: Enid Marx (½d. to 2d.), M.C. Farrar-Bell (2½d. to 4d.),
 G. Knipe (5d. to 7d.), Mary Adshead (8d. to 11d.) and Edmund Dulac
 (1/- to 1/6). Queen's portrait from a photograph by Dorothy
 Wilding. Photogravure printed by Harrison and Sons Ltd. Watermark
 multiple St. Edward's Crown over E 2 R. Perforation 15 X 14.

1955 - 1958
 QUEEN ELIZABETH II

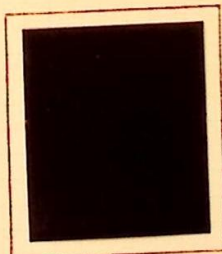


Designs by: Enid Marx ($\frac{1}{2}$ d. to 2d.), M.C. Farrar-Bell ($2\frac{1}{2}$ d. to 4d.), G. Knipe (5d. to 7d.), Mary Adshead (8d. to 11d.) and Edmund Dulac (1/- to 1/6). Queen's portrait from a photograph by Dorothy Wilding. Photogravure printed by Harrison and Sons Ltd. Watermark multiple St. Edward's Crown over E 2 R. Perforation 15 X 14.

1955 - 1958
QUEEN ELIZABETH II



Watermark inverted.



Watermark sideways.

Designs By : Enid Marx ($\frac{1}{2}$ d. to 2d.), M.C. Farrar-Bell
($2\frac{1}{2}$ d. and 3d.). Queen's portrait from a photograph by
Dorothy Wilding. Photogravure printed by Harrison and
Sons Ltd. Watermark St. Edward's Crown over E 2 R.
Perforation 15 X 14.

1955 - 1958
QUEEN ELIZABETH II



Watermark inverted.



Watermark sideways.

Designs by : Enid Marx ($\frac{1}{2}$ d. to 2d.), M.C. Farrar-Bell
($2\frac{1}{2}$ d. and 3d.). Queen's portrait from a photograph by
Dorothy Wilding. Photogravure printed by Harrison and
Sons Ltd. Watermark St. Edward's Crown over E 2 R.
Perforation 15 X 14.

APRIL 1954
BOOKLET STAMPS



Two panes with cylinder numbers F 6 no dot and F 6 dot. Watermark upright.



Two panes with inverted watermark. Label at left shows partial dry print.

Booklet panes se-tenant with printed labels : "PLEASE POST EARLY IN THE DAY" from the 2/6 booklet. Photogravure printed by Harrison and Sons Ltd. Watermark Tudor Crown over E 2 R. Perforation 15 X 14.

JANUARY 1955
BOOKLET STAMPS



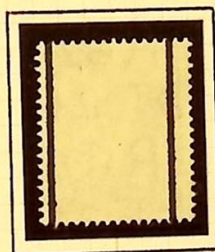
Two panes with cylinder numbers F 6 no dot
and F 6 dot. Watermark upright.



Pane with inverted watermark

Booklet panes se-tenant with printed labels : "PACK YOUR PARCELS SECURELY" (1st. label), "ADDRESS YOUR LETTERS CORRECTLY" (2nd. label) and "AND POST EARLY IN THE DAY" (3rd. label) from the 2/6 booklet. Photogravure printed by Harrison and Sons Ltd. Watermark Tudor Crown over E 2 R. Perforation 15 X 14.

NOVEMBER 19th. 1957
GRAPHITE-LINED ISSUE



Back of stamp showing the
position of the graphite-lines.



Graphite-lined stamps were used in connection with automatic sorting machines first introduced experimentally at Southampton. The graphite lines were printed in black on the back of the stamps beneath the gum, two lines per stamp, except for the twopenny which has only one line at the right (as seen from the back). Printed in photogravure by Harrison and Sons Ltd. Watermark Multiple St. Edward's Crown. Perforation 15 X 14.

1958 - 1965
 QUEEN ELIZABETH II



Designs by; Enid Marx ($\frac{1}{2}$ d. to 2d.), M.C. Farrar-Bell ($2\frac{1}{2}$ d. to 4d.), G. Knipe (5d. to 7d.), Mary Adshead (8d. to 10d.) and Edmund Dulac (1/- to 1/6). Queen's portrait from a photograph by Dorothy Wilding. Photogravure printed by Harrison and Sons Ltd. Watermark Multiple Crowns. Perforation 15 X 14.

1958 - 1965
 QUEEN ELIZABETH II



Designs by: Enid Marx ($\frac{1}{2}$ d. to 2d.), M.C. Farrar-Bell ($2\frac{1}{2}$ d. to 4d.), G. Knipe (5d. to 7d.), Mary Adshead (8d. to 10d.) and Edmund Dulac (1/- to 1/6). Queen's portrait from a photograph by Dorothy Wilding. Photogravure printed by Harrison and Sons Ltd. Watermark Multiple Crowns. Perforation 15 X 14.

1958 -1965
 QUEEN ELIZABETH II



Watermark inverted.



Watermark sideways.

Designs by : Enid Marx (1/2d. to 2d.), M.C. Farrar-Bell (2 1/2d. to 4d.). Queen's portrait from a photograph by Dorothy Wilding. Photogravure printed by Harrison and Sons Ltd. Watermark Multiple Crowns. Perforation 15 X 14.

1958 - 1965
 QUEEN ELIZABETH II



Watermark inverted.



Watermark sideways.

Designs by : Enid Marx (½d. to 2d.), M.C. Farrar-Bell (2½d. to 4d.). Queen's portrait from a photograph by Dorothy Wilding. Photogravure printed by Harrison and Sons Ltd. Watermark Multiple Crowns. Perforation 15 X 14.

1958 - 1961
 GRAPHITE-LINED ISSUE



Designs by : Enid Marx ($\frac{1}{2}$ d. to 2d.), M.C. Farrar-Bell ($2\frac{1}{2}$ d. to $4\frac{1}{2}$ d.). Queens portrait from a photograph by Dorothy Wilding. Photogravure printed by Harrison and Sons Ltd., with graphite lines on the back. Watermark Multiple Crowns. Perf. 15 X 14.

1959
 QUEEN ELIZABETH II
 PHOSPHOR-GRAPHITE ISSUE



Watermark error
 "St. Edward's Crown"

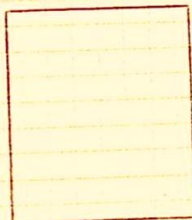
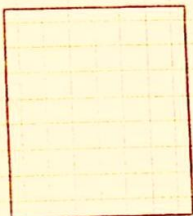
Designs by : Enid Marx ($\frac{1}{2}$ d. to 2d.), M.C. Farrar-Bell ($2\frac{1}{2}$ d. to $4\frac{1}{2}$ d.). Queen's portrait from a photograph by Dorothy Wilding. Photogravure printed by Harrison and Sons Ltd., with graphite lines on the back and phosphor bands on the front. Watermark ($\frac{1}{2}$ d. to $1\frac{1}{2}$ d.) St. Edward's Crown over E II R, (2d. to $4\frac{1}{2}$ d.) Multiple Crowns. Perforation 15 X 14.

1960 - 1967
 QUEEN ELIZABETH II
 PHOSPHOR ISSUE



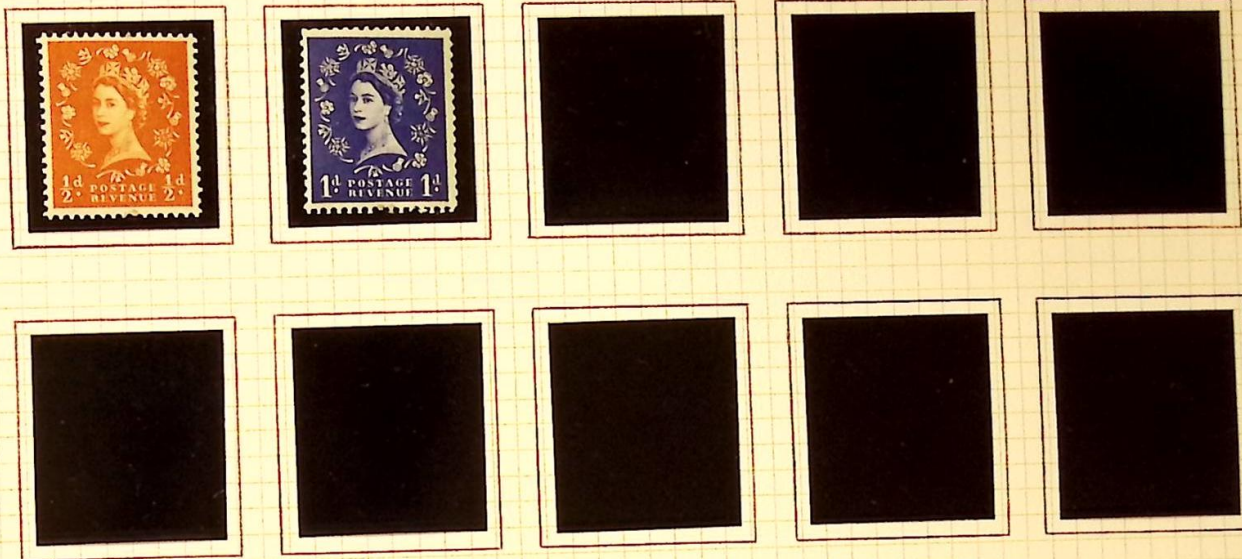
Designs by: Enid Marx (½d. to 2d.), M.C. Farrar-Bell (2½d. to 4d.), G. Knipe (5d. to 7d.), Mary Adshead (8d. to 10d.) and Edmund Dulac (1/- to 1/6). Queen's portrait from a photograph by Dorothy Wilding. Photogravure printed by Harrison and Sons Ltd., with phosphor bands on front. Watermark Multiple Crowns. Perf. 15 X 14

1960 - 1967
 QUEEN ELIZABETH II
 PHOSPHOR ISSUE



Designs by: Enid Marx (1d. to 2d.), M.C. Farrar-Bell (2½d. to 4d.), G. Knipe (5d. to 7d.), Mary Adshead (8d. to 10d.) and Edmund Dulac (1/- to 1/6). Queen's portrait from a photograph by Dorothy Wilding. Photogravure printed by Harrison and Sons Ltd., with phosphor bands on front. Watermark Multiple Crown. Perf. 15 X 14.

1960 - 1967
 QUEEN ELIZABETH II
 PHOSPHOR ISSUE



Watermark inverted.



Watermark sideways.

Designs by: Enid Marx (½d. to 2d.), M.C. Farrar-Bell (2½d. to 4d.).
 Queen's portrait from a photograph by Dorothy Wilding. Printed
 in photogravure by Harrison and Sons Ltd. Watermark Multiple
 Crowns. Perforation 15 X 14.

STANLEY GIBBONS PUBLICATIONS LTD. LONDON AND RINGWOOD MADE AND PRINTED IN ENGLAND

1960 - 1967
QUEEN ELIZABETH II
PHOSPHOR ISSUE



Watermark inverted.



Watermark sideways.

Designs by: Enid Marx (½d. to 2d.), M.C. Farrar-Bell (2½d. to 4d.).
Queen's portrait from a photograph by Dorothy Wilding. Printed
in photogravure by Harrison and Sons Ltd. Watermark Multiple
Crowns. Perforation 15 X 14.

1963
CASTLES HIGH VALUES



Carrickfergus Castle
1st. July



Caernarvon Castle
3rd. September



Edinburgh Castle
16th. October



Windsor Castle
14th. November

Designs : Castles by Lynton Lamb, Queen's portrait by Dorothy Wilding.
Recess-printed by Bradbury Wilkinson and Co. Ltd., on white paper.
Watermark Multiple Crowns. Perforation 11 X 12.

1963 - 1964
2/- BOOKLETS FOR HOLIDAY RESORTS

MINIMUM
LETTER RATE TO
FOREIGN COUNTRIES
including U.S.A., Burma, Egypt,
Israel, Jordan & Sudan

6d.

15th. July 1963
Black stitching.

MINIMUM
LETTER RATE TO
FOREIGN COUNTRIES
including U.S.A., Burma, Egypt,
Israel, Jordan & Sudan

6d.

3rd. September 1963.
White stitching.

POST OFFICE GUIDE

An indispensable annual for
quick reference to all services
conducted by the Post Office
both inland and overseas

1st. July 1964
Black stitching.

Contents : 8 X 2½d. in panes of four and 3 X ½d.
and 1 X 2½d. in pane of four arranged se-tenant.

Contents changed ; 8 X ½d.
and 8 X 2½d. in panes of
four arranged se-tenant.



Printed by Harrison and Sons Ltd. Lemon cover with red print, stamps
printed on chalky paper. Fully interleaved with advertising panes.
Watermark Multiple Crowns (sideways on the 1964 booklet).
Perforation 15 X 14.

DECEMBER 4th. 1967
£1 BLACK : WINDSOR CASTLE



Design : Windsor Castle by Lynton Lamb, Queen's portrait by Dorothy Wilding.
Recess-printed by Bradbury Wilkinson and Co. Ltd. The plates were made from
the original Waterlow die. No watermark, white paper. Perforation 11 X 12.

APRIL 10th. 1968
5/- BROWNISH RED PLATE 4



Recess-printed by Bradbury, Wilkinson and Co., with plates made from the original Waterlow Die. Printed on unwatermarked white paper. Perforation 11 X 12.

APRIL 10th. 1968
5/- BROWNISH RED PLATE 5



Recess-printed by Bradbury, Wilkinson and Co., with plates made from the original Waterlow Die. Printed on unwatermarked white paper. Perforation 11 X 12.

PHANTOM 'R' VARIETY



First retouch showing trace of 'R' with that part of marginal rule uneven.



Second retouch : The 'R' is scarcely discernible.

Both blocks from cylinder 37 no dot, showing the "Spot on foot of T" variety, row 19 stamp 11.



Phosphor printing from cylinder 41 no dot showing an incomplete masking of the marginal rule thus revealing the phantom 'R'.

Designed by M. C. Farrar-Bell from a portrait by Dorothy Wilding.
Printed in photogravure by Harrison and Sons Ltd. Watermark
Multiple Crowns. Perforation 15 X 14.

1967 - 1970
 QUEEN ELIZABETH II
 STERLING MACHIN DEFINITIVES

One centre phosphor band.



Two phosphor bands.



Type I.

Phosphorised paper.

Type II.

Design after a plaster cast by Arnold Mackin. Photogravure printed on unwatermarked chalky paper by Harrison and Sons Ltd. Perforation 15 X 14.

MADE AND PRINTED IN ENGLAND
 HARRISON AND SONS LTD LONDON AND KINGWORTH

MARCH 5th. 1969
MACHIN HIGH VALUES



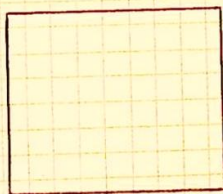
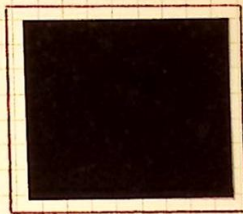
Design after a plaster cast by Arnold Machin. Recess-printed by Bradbury, Wilkinson and Co. Ltd. on rotary sheet-fed machines. Paper unwatermarked lightly chalky coated, P.V.A. gum. Perforation comb 12.

MARCH 5th. 1969
£1 BLUISH BLACK



The design is from a plaster cast by Arnold Machin. Recess-printed by Bradbury Wilkinson and Co. Ltd., on unwatermarked chalky paper. Perforation 12.

1959 - 1963
QUEEN ELIZABETH II
POSTAGE DUE STAMPS



Designed by G. Eve. Typographed by Harrison and Sons Ltd.
Watermark Multiple Crowns sideways. Perforation 15 X 14.