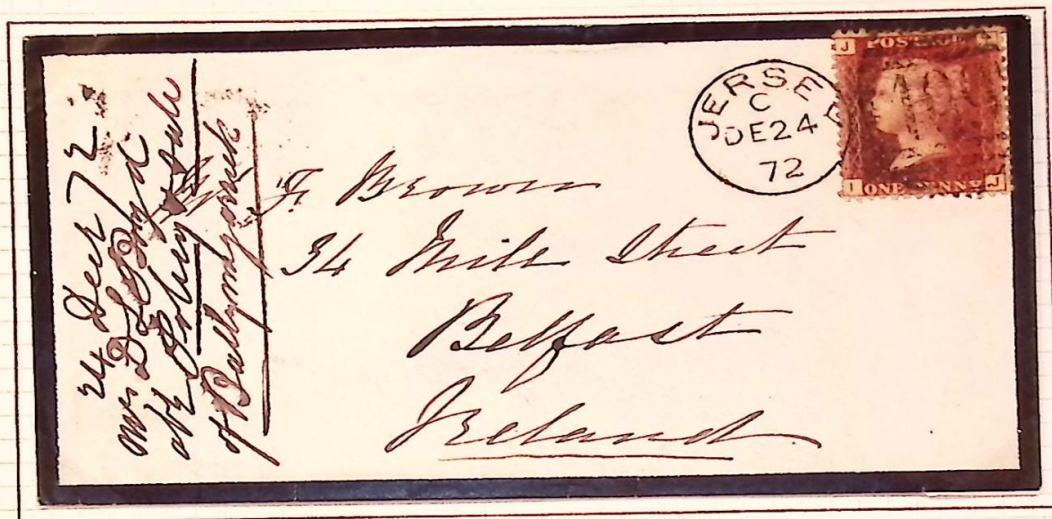


JERSEY



1872 Mourning cover from Jersey to Belfast. Penny red plate 145 struck with a Jersey duplex mark dated 24th. December 1872 (Christmas Eve). Backstamped with a single ring Belfast handstamp dated 27th. December 1874.



Squared circle mark for 8th. November 1900. This type of obliterator was in use from 1892 until 1905.



JERSEY
SUB-OFFICES


POST CARD.

This Side for Correspondence

The Address to be written here

Many thanks for the first Card from Alpencamlee. We hope you are both in good health. It has been all well thro' the summer (Bright's disease) is bad for eight weeks. He has been spending a month in Glenay, getting convalescent by now. We hope to return to Alderney on Friday. We have had fine weather & we have both been greatly benefited. It is hoped that Kulture is not alright and no more of you off coming.?

Mr. M. Grant
Ithaca House
Ranwonnus Rd.
Mountain Ash
South Wales



Postcard depicting "Jersey House of Commons" used from St. Ouen's on September 13th. 1908.

St. Ouen's opened by 1852 with name "St. Owens". Name changed to present form in April 1922.

CENTENARY OF THE
FIRST POSTAGE STAMP
MAY 6th. 1940



CENTENARY OF THE
POSTAGE STAMP
May 6, 1840- 1940
FIRST DAY COVER

W. Le Page
Grankey Farm
Castel
GUERNSEY

The Centenary of the
Adhesive Postage Stamp



May 6th 1840-1940



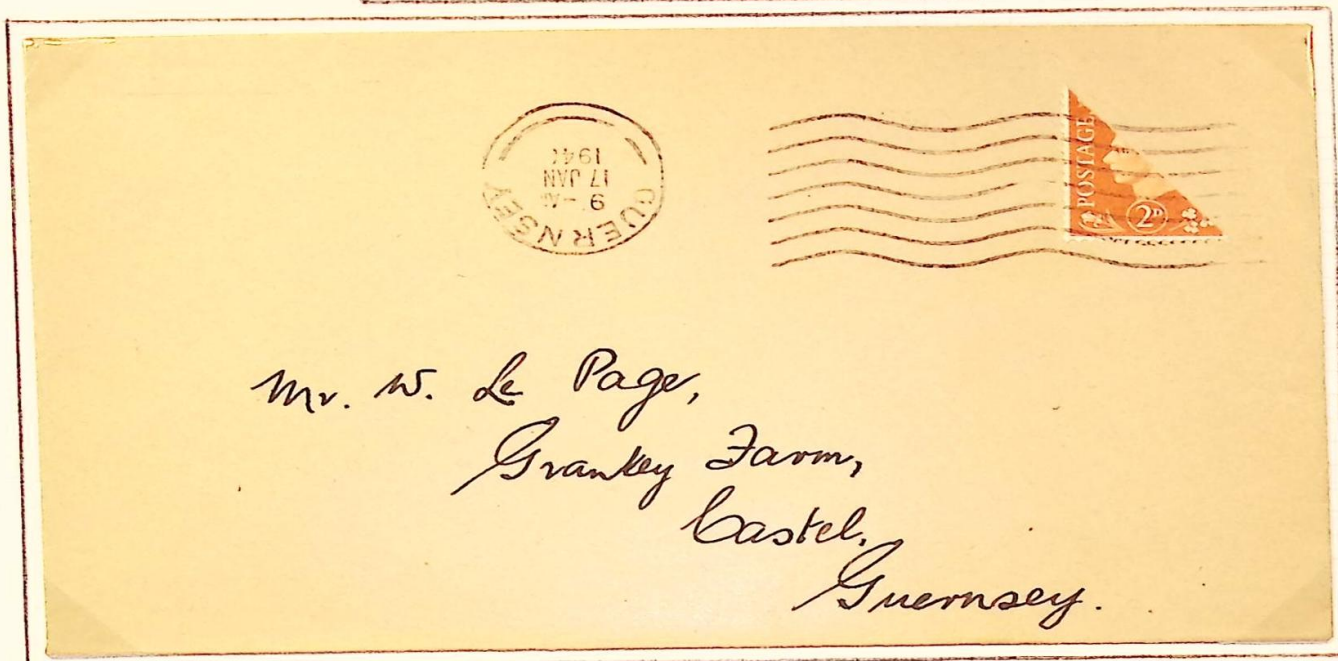
1st DAY COVER



W. Le Page
Grankey Farm
Castel
GUERNSEY

Two First Day Covers. Stamps designed by H.L. Palmer. Printed
Printed in photogravure by Harrison & Sons. Watermark Crown
over G VI R. Perforation $14\frac{1}{2}$ X 14. The Channel Islands were
occupied by German troops from 30th. June 1940.

THE GERMAN OCCUPATION OF GUERNSEY
December 27th. 1940



Bisected stamps were authorised for use in Guernsey from December 27th. 1940 until February 1941. Because of the German Occupation the Post Office was unable to obtain a new date canceller from London with 1941 on it. As can be seen on these covers the 1940 canceller was used with the side of the '0' filed off, thus giving a curved effect to the '1' in 1941.

THE GERMAN OCCUPATION OF GUERNSEY
December 27th. 1940



Postcard with a bisected 2d. Stamp Centenary commemorative
cancelled by a COBO handstamp dated February 22nd. 1941.

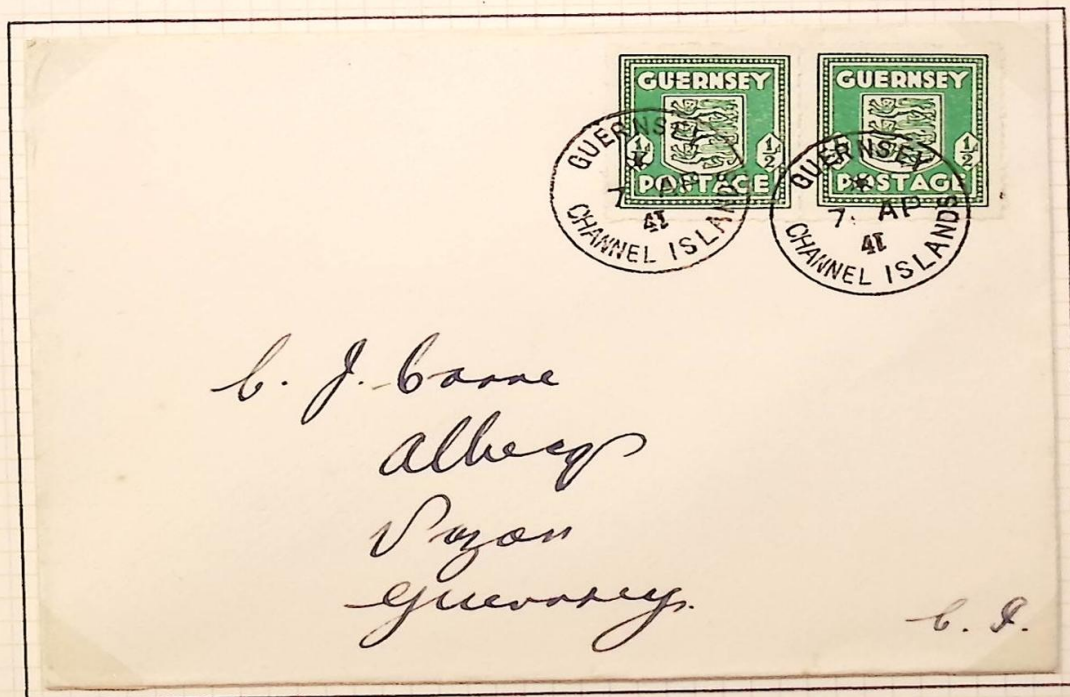
Following the German Occupation the existing supplies of current British stamps continued in use until stocks became exhausted. It had earlier been decided that locally printed stamps should be supplied, but in the event these were not ready for issue until 18th. February 1941. Faced with a dearth of 1d. stamps the authorities announced, on 27th. December 1940, that bisected 2d. values would be allowed to do duty for 1d. stamps. The 2d. stamps available were the 1937 definitive and the 1940 Stamp Centenary commemorative.

GUERNSEY WAR OCCUPATION ISSUE
1941



Emerald-green : 7th. April 1941

Blue-green : November 1941



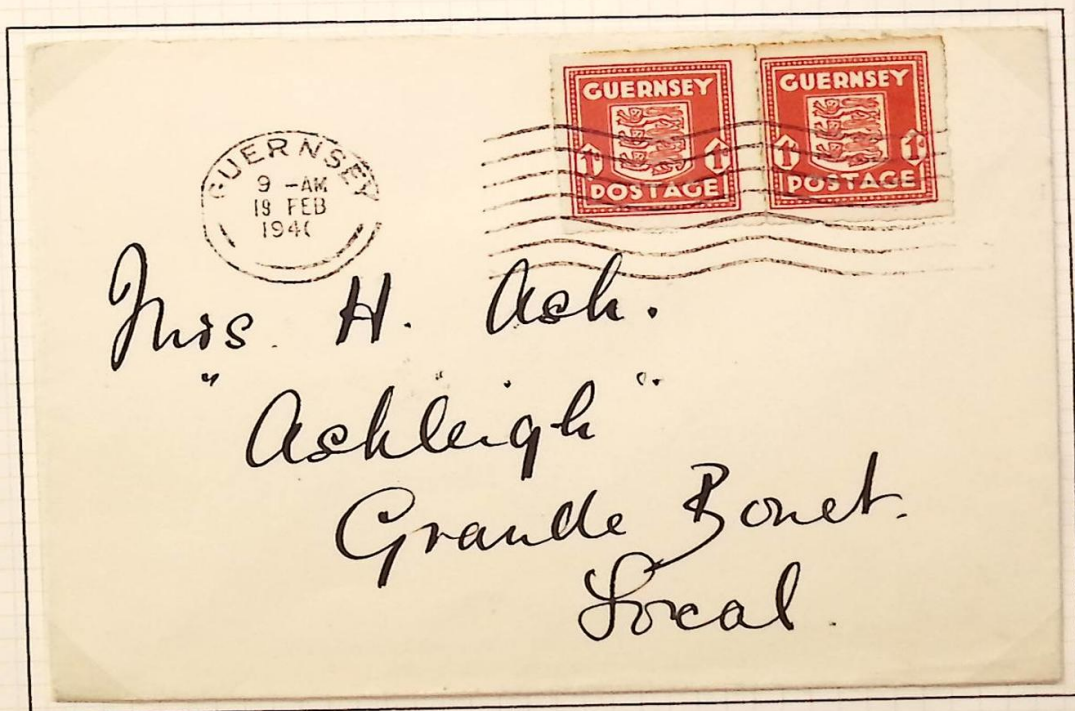
Design : Arms of Guernsey by E.W. Vaudin. Typographed by
Guernsey Press Company Limited in sheets of 60 (6 X 10).
No Watermark. Roulette perforation.

GUERNSEY WAR OCCUPATION ISSUE
FEBRUARY 18th. 1941



Printed on thin paper.

Printed on thick paper.

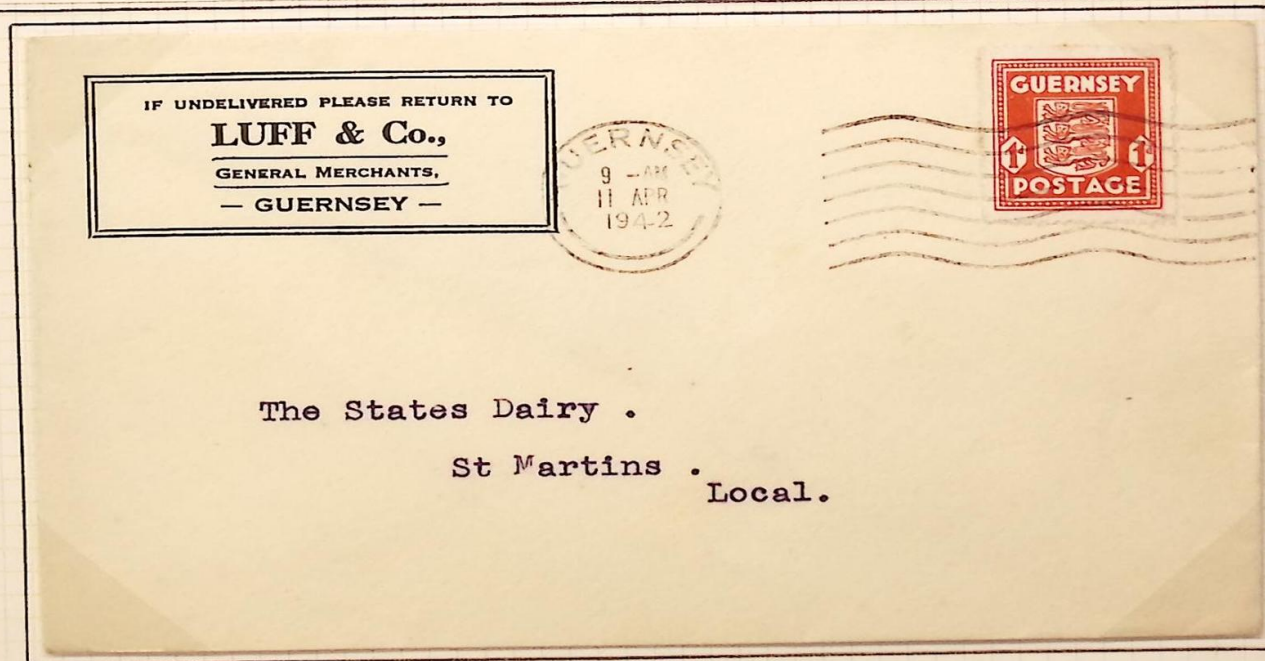


Design : Arms of Guernsey by E.W. Vaudin. Typographed by
Guernsey Press Company Limited in sheets of 60 (6 X 10).
No Watermark. Roulette perforation.

GUERNSEY WAR OCCUPATION ISSUE
1941 - 1942



Local cover postmarked Guernsey July 23rd. 1941. Because of the German Occupation the Post Office was unable to obtain a 1941 date stamp from London. This cover has the 1940 cancel with the side of the '0' filed off, giving a curved effect to the '1'.



Local cover postmarked April 11th. 1942.

GUERNSEY WAR OCCUPATION ISSUE
1942 - 1944

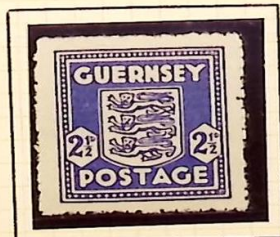


Yellow-green : February 1942

Sage-green : September 1942



Vermilion : July 1943



Deep ultramarine : July 1944

Ultramarine : 12th. July 1944

Design : Arms of Guernsey by E.W. Vaudin. Typographed by
Guernsey Press Company Limited in sheets of 60 (6 X 10).
No Watermark. Roulette perforation.

GUERNSEY WAR OCCUPATION ISSUE
1942



MADE IN ENGLAND BY THE REGISTERED PROPRIETORS OF THE TRADE MARK
"SWING-RING" ALBUM LEAF No. 1299

Design : Arms of Guernsey by E.W. Vaudin. Typographed on
bluish French bank-note paper by Guernsey Press Company
Limited in sheets of 60 (6 X 10). Numbers issued : 120000
of each. Watermark Loops sideways. Roulette perforation.

GUERNSEY REGIONAL ISSUE
1958 - 1967



Pale rose-red
(cylinder 1).

Rose-red
(cylinder 3)

Issued June 8th. 1964. Withdrawn August 31st. 1966.



Deep lilac. Cream paper.
August 18th. 1958.

Deep lilac. White paper.
July 5th. 1962.



Deep lilac.

Centre phosphor band.
May 24th. 1967.

Deep reddish lilac.



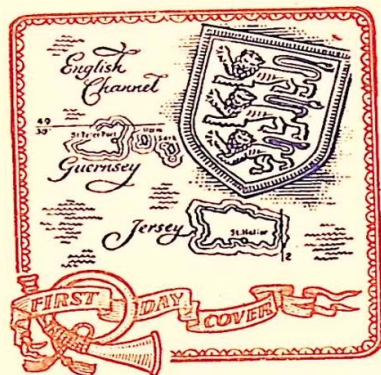
Ultramarine.
February 7th. 1966.

Ultramarine. Two phosphor
bands. October 24th. 1967.

Designs by E.A. Piprell, portrait by Dorothy Wilding Limited.
Photogravure printed by Harrison and Sons. Watermark Multiple
Crowns. Perforation 15 X 14.

GUERNSEY REGIONAL ISSUE
AUGUST 18th. 1958

Regional Issue
GUERNSEY



United Kingdom

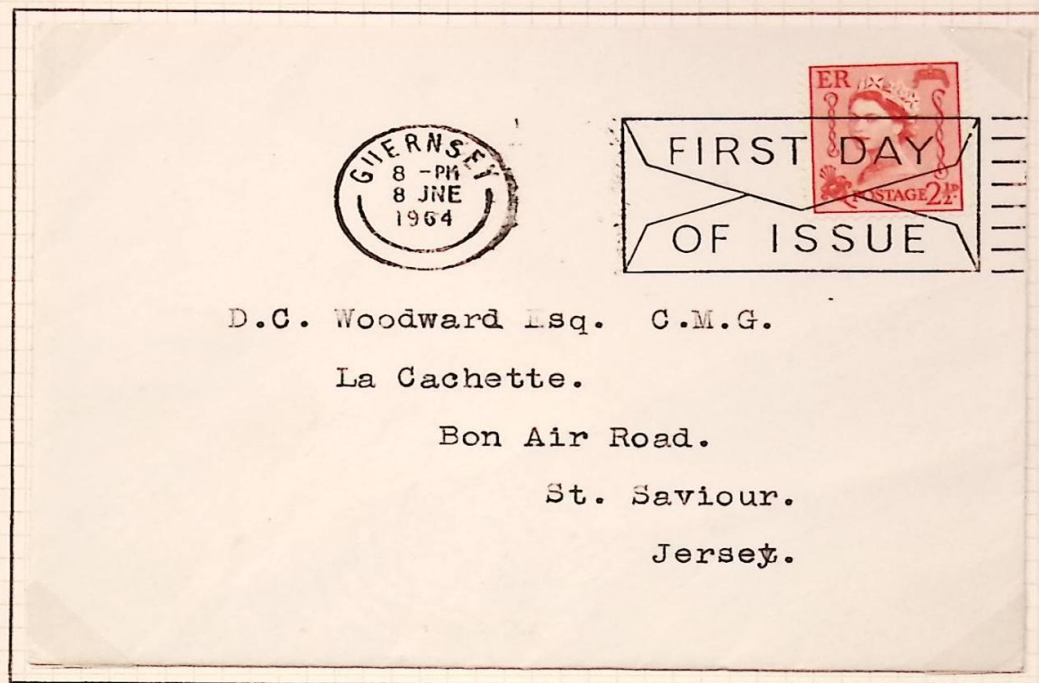


*M. M. M.
Le Petit Fiel
S. M. M.
C. M. M.*



Design by E.A. Piprell, Queen's portrait by Dorothy Wilding Limited. Printed in photogravure by Harrison and Sons. Watermark Multiple Crowns. Perforation 15 X 14.

GUERNSEY REGIONAL ISSUE
JUNE 8th. 1964



The 2½d. Regional stamp issued in Guernsey on June 8th. 1964 saw the introduction of the general machine cancellation of Great Britain, having the words 'FIRST DAY OF ISSUE' on an envelope and printed as a slogan to the right of a circular datestamp.



Design by J.H. Nicholson, portrait by Dorothy Wilding Limited. Photogravure printed by Harrison and Sons. Watermark Multiple Crowns. Perforation 15 X 14.

GUERNSEY REGIONAL ISSUE
1968 - 1969



April 16th. 1968
Two phosphor bands.

September 4th. 1968
Two phosphor bands.



February 26th. 1969
Centre phosphor band.

September 4th. 1968
Centre phosphor band.

Designs by E.A. Piprell, portrait by Dorothy Wilding Limited.
Photogravure printed on chalky paper by Harrison and Sons.
No Watermark. Perforation 15 X 14.

GUERNSEY REGIONAL ISSUE
SEPTEMBER 4th. 1968



FIRST DAY COVER.



MR. J. VAN HERWAARDEN
THE BEECHES,
MONT D'AVAIL,
CASTEL,
GUERNSEY.

Designs by E.A. Piprell, portrait by Dorothy Wilding
Limited. Photogravure printed on chalky paper by
Harrison and Sons. No Watermark. Perforation 15 X 14.

GUERNSEY REGIONAL ISSUE
1968 - 1969

Stem flaw : Coloured line across top of flower stem.
(cylinder 1 no dot row 12 stamp 8).

April 16th. 1968.



September 4th. 1968



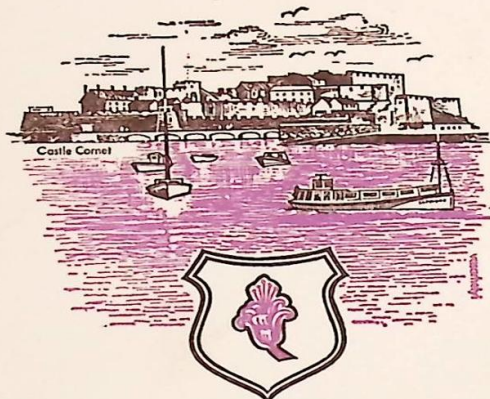
February 26th. 1969



The flaw has been retouched but still shows
as a smudge to right of flower stem.

Photogravure printed by Harrison and Sons on chalky paper
with PVA gum. No watermark. Perforation 15 X 14.

GUERNSEY REGIONAL ISSUE
FEBRUARY 26th. 1969



GUERNSEY

REGIONAL DEFINITIVES

1969

FIRST DAY COVER



Mrs. Ann Wareham,
Secmaton Farm,
Dawlish,
Devon.



Photogravure printed by Harrison and Sons on chalky
paper with PVA gum. No watermark. Perforation 15 X 14.

JERSEY WAR OCCUPATION ISSUE
1941 - 1942

FIRST DAY CANCELLATION

Messrs. A. M. HOLMES,
18, Bath Street,
St. Helier,
JERSEY,
Channel Islands.



JERSEY'S FIRST
1/2^d. POSTAGE
STAMP.

Half penny bright green.
First Day Cover 29th. January 1942.

R JERSEY
No 8231

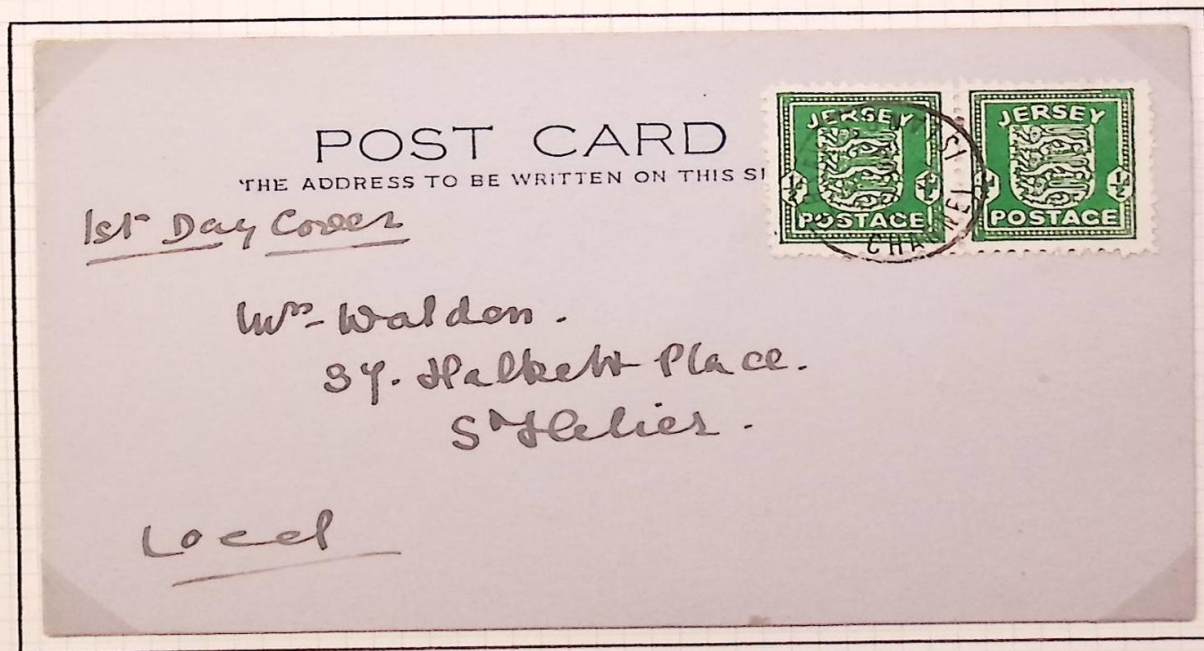
*Mrs Crespel,
31 Hilgrove St.
St. Helier
Jersey.*



One penny scarlet.
First Day Cover 1st. April 1941.

Design : Arms of Jersey by Major N.V.L. Rybot. typographed by
Evening Post , Jersey on white paper in sheets of 60. No watermark.
Perforation 11. Withdrawn and invalidated on April 13th. 1946

JERSEY WAR OCCUPATION ISSUE
JANUARY 29th. 1942



Design : Arms of Jersey by Major N.V.L. Rybot. Typographed
by Evening Post, Jersey on white paper in sheets of 60.
No Watermark. Perforation 11. Withdrawn and invalidated
on April 13th. 1946.

JERSEY WAR OCCUPATION ISSUE
JUNE 1943

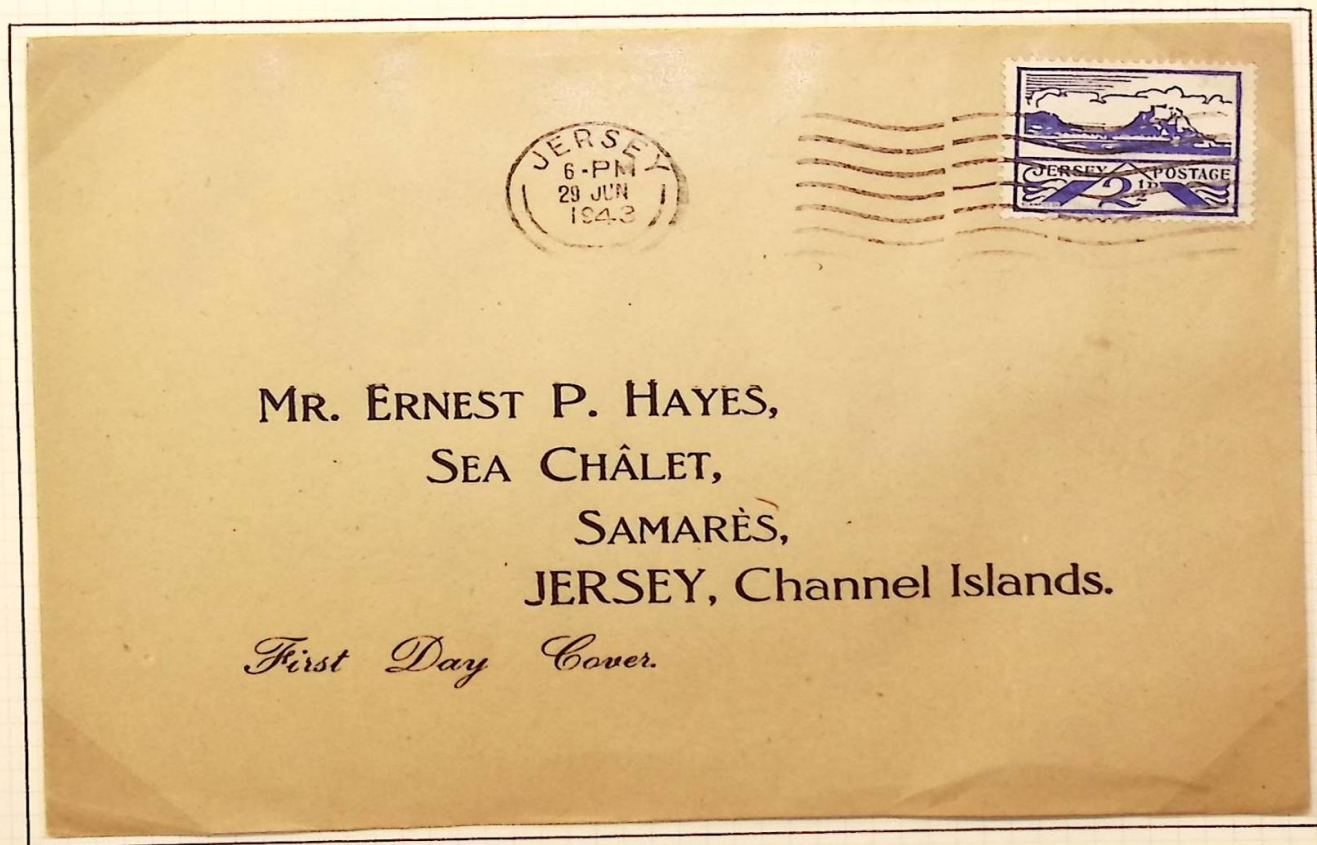
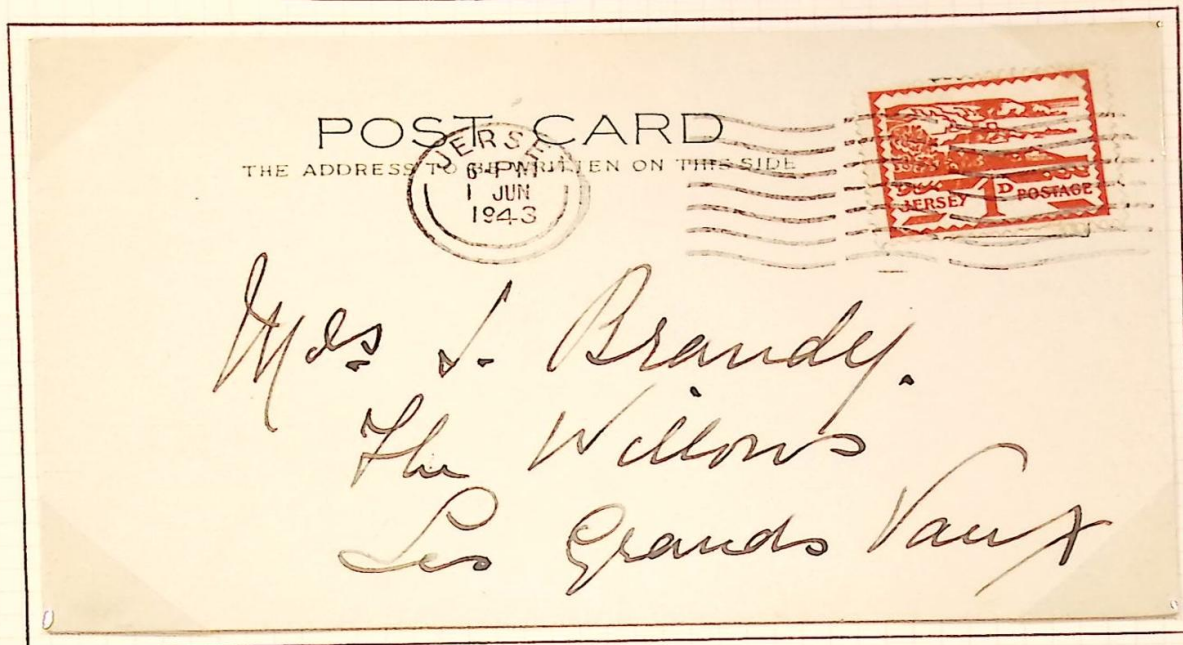


Issued under British Authority during the German Occupation. Designs by Edmund Blampied, engraved by Henri Cartot. Typographed on rough whitish paper by the French Government Printing Works, Paris in sheets of 120 (four panes of 30 : 3 X 10). No watermark. Perf. 13½.



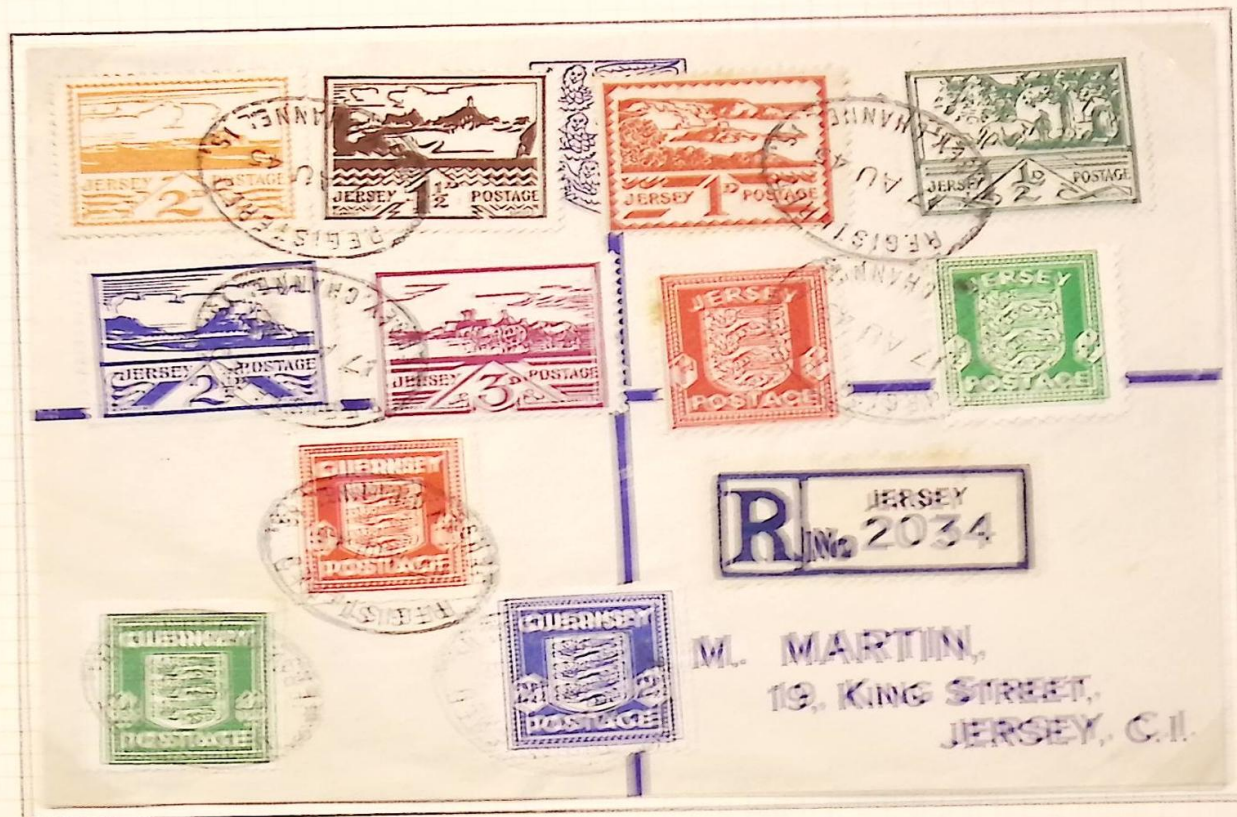
Registered cover handstamped 29th. June 1943,
Day of Issue for the 2½d. and 3d. values.

JERSEY WAR OCCUPATION ISSUE
JUNE 1943



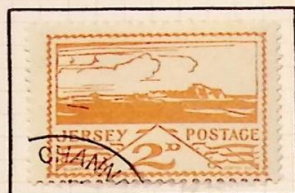
Two covers postmarked on June 1st. and June 29th.
1943. The date of issue for these two stamps.

JERSEY WAR OCCUPATION ISSUE
AUGUST 1945



Registered cover with combined Guernsey and Jersey War Occupation issues cancelled with an oval Jersey registered mark dated 17th August 1945. These stamps were valid for use until 13th April 1946.

JERSEY WAR OCCUPATION ISSUE
JUNE 1943



Designs by Edmund Blampied. Typographed on rough whitish paper.
Issue dates $\frac{1}{2}$ d. and 1d. 1st. June ; $1\frac{1}{2}$ d. and 2d. 8th. June ;
 $2\frac{1}{2}$ d and 3d. 29th. June.

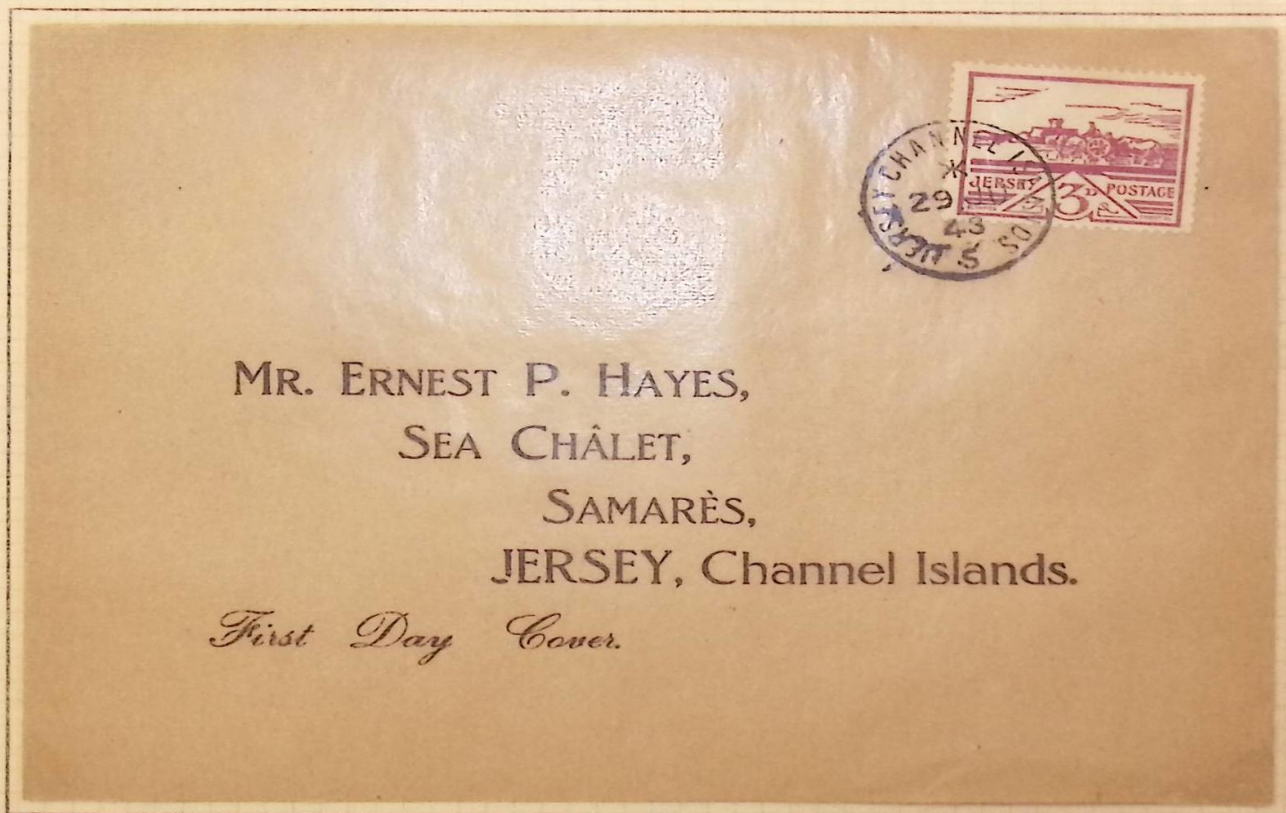
First Day Cover



Mr Brown
St Helier
Jersey I.L.

First Day Cover for the $1\frac{1}{2}$ d. and 2d. values
handstamped 8th. June 1943.

JERSEY WAR OCCUPATION ISSUE
JUNE 1943



Three pence violet depicting gathering Vraic (seaweed).
First Day Cover 29th. June 1943.

Designs by Edmund Blampied, engraved by Henri Cartot. Typographed
on rough whitish paper by the French Government Printing Works,
Paris in sheets of 120 (four panes of 30 : 3 X 10). No Watermark.
Perforation $1\frac{1}{2}$.

JERSEY WAR OCCUPATION ISSUE
1943



6th. October.

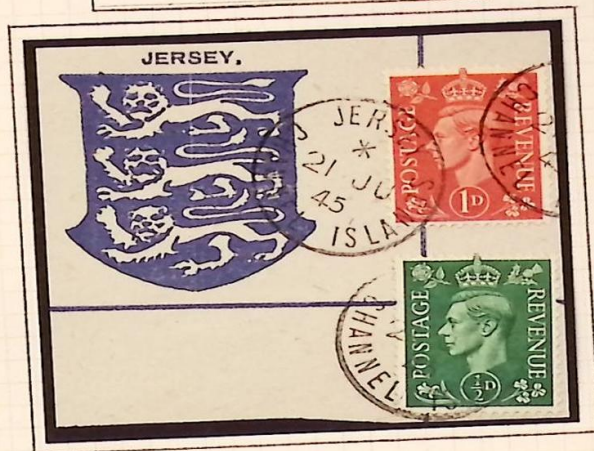
28th. February.

25th. February.

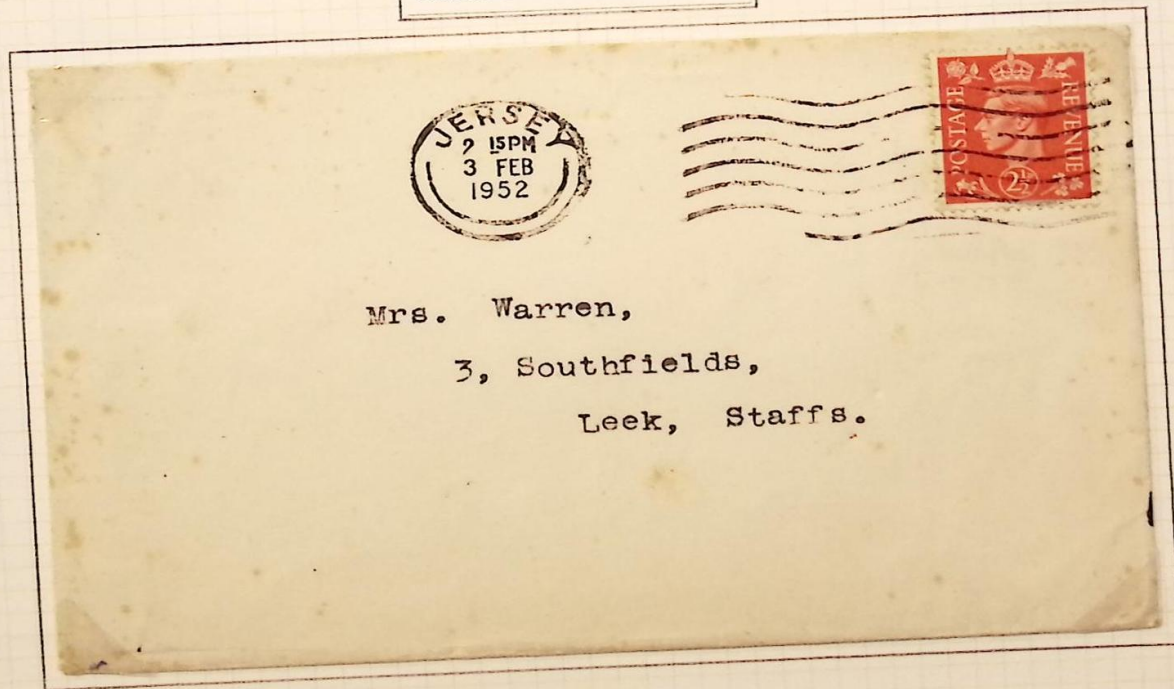
Designs by Edmund Blampied, engraved by Henri Cartot.
Typographed on newspaper by the French Government
Printing Works, Paris in sheets of 120 (four panes
of 30). No Watermark. Perforation $13\frac{1}{2}$.

JERSEY
KING GEORGE VI

1941-42 Definitives
with pale background.



1950-52 Change of
colour definitives.



Design by E. Dulac (head) and E. Gill (frame). Printed in
photogravure by Harrison and Sons. Watermark Crown over
G VI R. Perforation 15 X 14.

JERSEY REGIONAL ISSUE
1968 - 1969



June 8th. 1964.



August 18th. 1958.

February 7th. 1966.



Dull reddish lilac
June 9th. 1967

One centre phosphor band.

Deep lilac
June 9th. 1967



Ultramarine, Cream paper
September 5th. 1967

Two phosphor bands.

Ultramarine, White paper
September 5th. 1967

Designs by E. Blampied (2½d.), W.M. Gardner (others) portrait by Dorothy Wilding Limited. Photogravure printed by Harrison and Sons. Watermark Multiple Crowns. Perforation 15 X 14.

JERSEY REGIONAL ISSUE
18th. AUGUST 1958



Design by W.M. Gardner, portrait by Dorothy Wilding Limited. Photogravure printed by Harrison and Sons. Watermark Multiple Crowns. Perforation 15 X 14.

JERSEY REGIONAL ISSUE
1958 - 1967



Olive-sepia
September 4th. 1968



Bright vermilion
February 26th. 1969



Royal blue
September 4th. 1968



Designs by W.M. Gardner, portrait by Dorothy Wilding Limited.
Photogravure printed on chalk-surfaced paper by Harrison and
Sons. No watermark. Perforation 15 X 14.

JERSEY REGIONAL ISSUES
1968 -- 1969



Two covers postmarked on September 4th, 1968 and February 26th, 1969. The dates of issue for these stamps.

CHANNEL ISLANDS LIBERATION
10th. May 1948



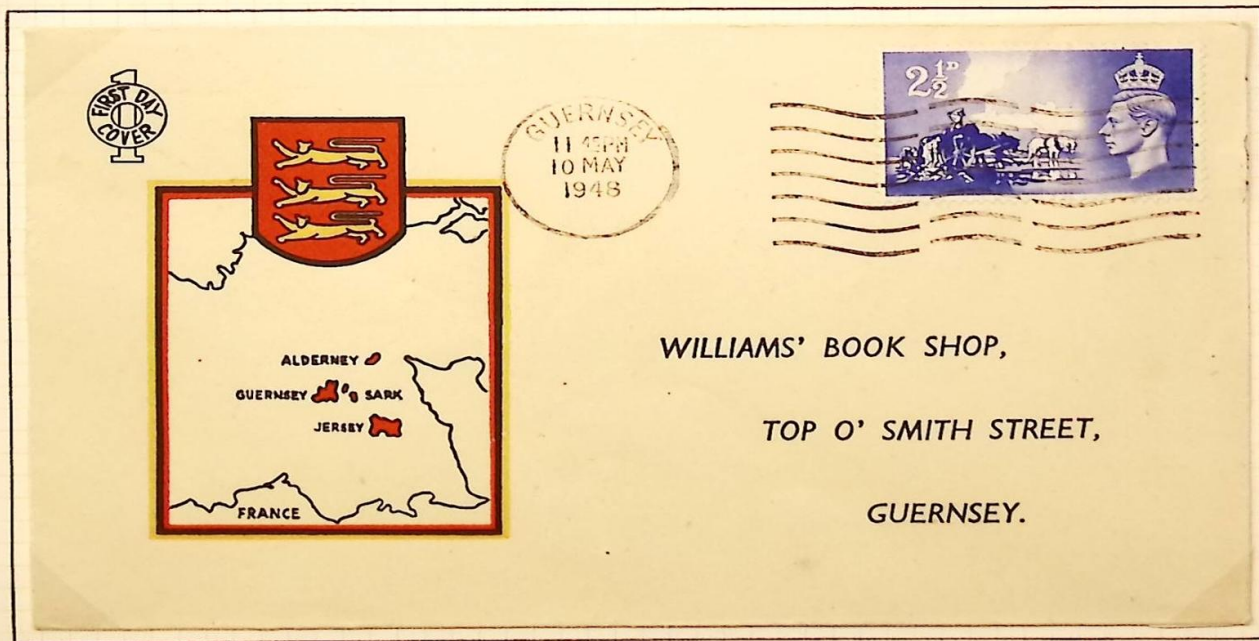
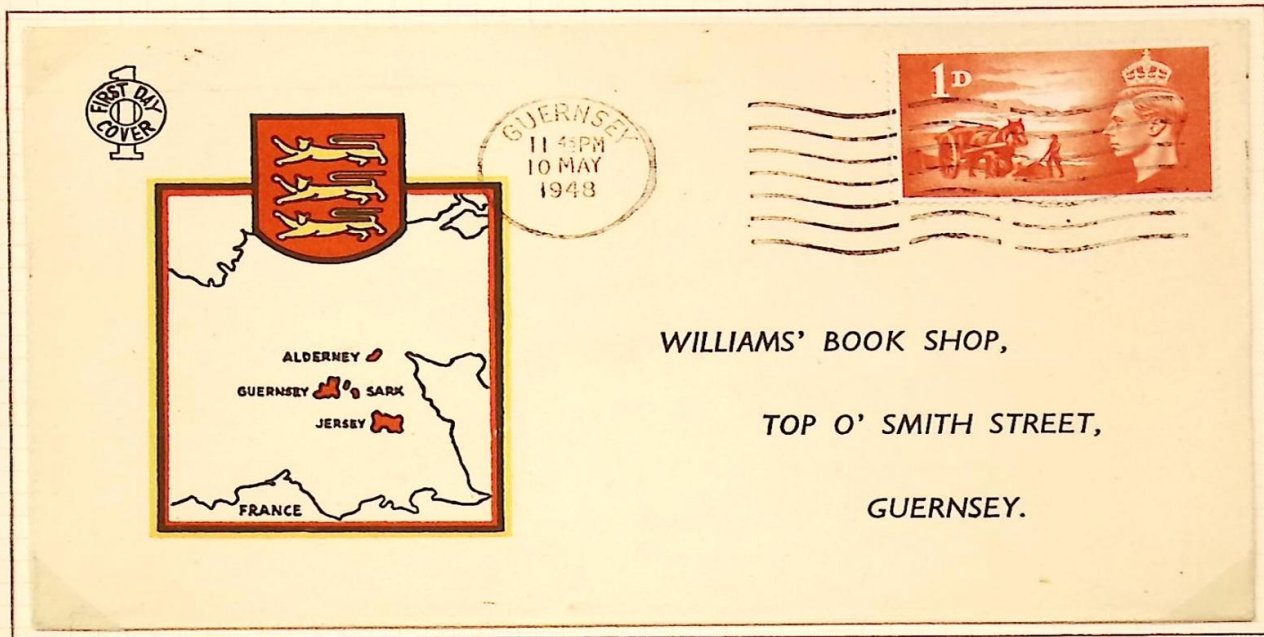
Block from cylinder 2 no dot.
Designed by J. R. R. Stobie.



Block from cylinder 4 no dot.
Designed by Edmund Blampied.

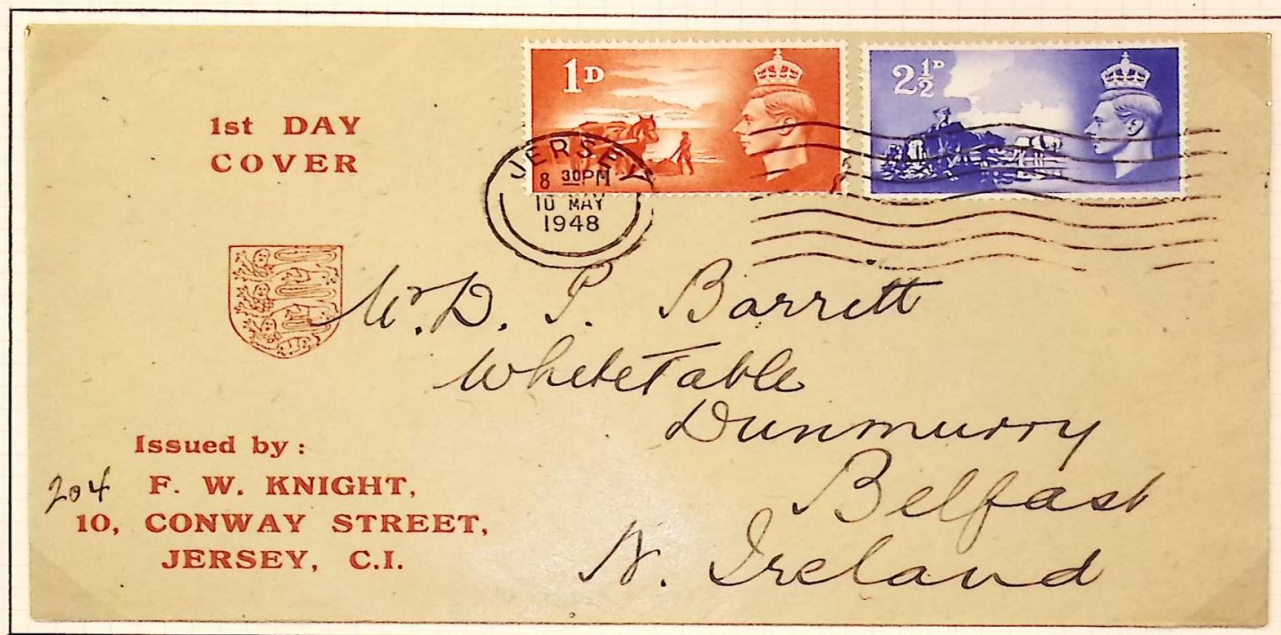
Issued to commemorate the third anniversary of the liberation, these stamps were issued primarily for use in the Channel Islands. They were also available at eight Head Post Offices in Great Britain. Printed in photogravure by Harrison and Sons. Perforation 15 X 14. Watermark Crown over G VI R.

CHANNEL ISLANDS LIBERATION
10th. MAY 1948



Pair of First Day Covers with Universal
Machine type datestamps.

CHANNEL ISLANDS LIBERATION
10th. May 1948



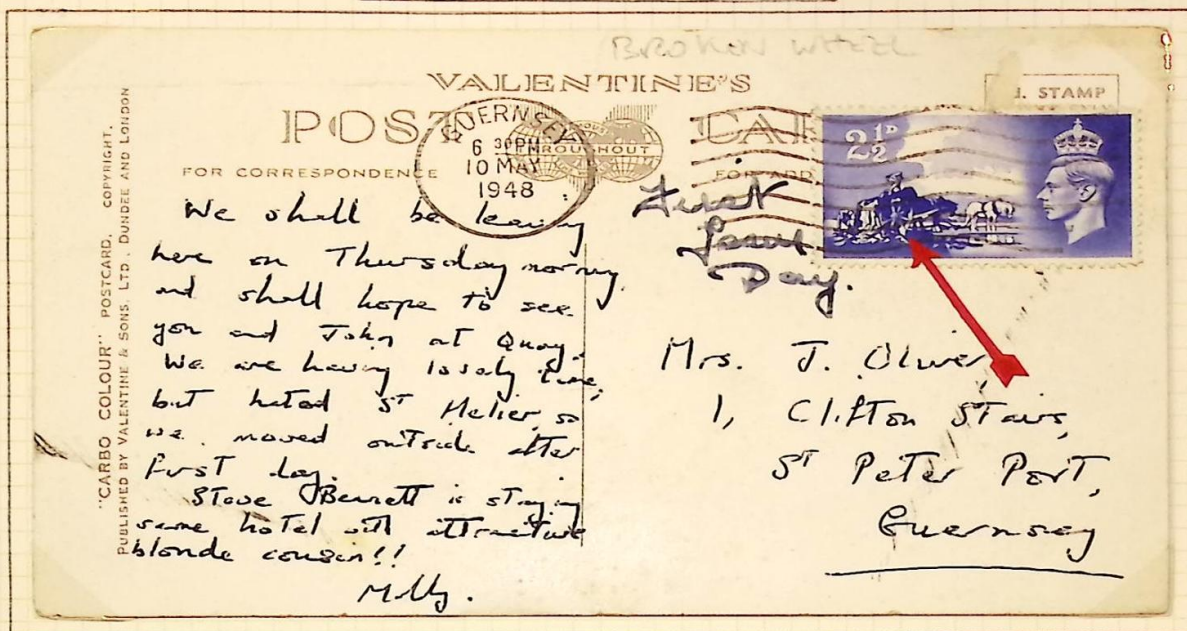
First Day Postmark.



Blocks used in Jersey.

Printed in photogravure by Harrison and Sons. Perforation
15 X 14. Watermark Crown over G VI R.

CHANNEL ISLANDS LIBERATION
10th. MAY 1948



Broken Wheel Flaw : Irregular patch on wheel
appears as a break. Row 20 stamp 5.

Printed in photogravure by Harrison and Sons.
Perforation 15 X 14. Watermark Crown over G VI R.

CHANNEL ISLANDS LIBERATION
10th. MAY 1948



Crown Flaw : Left arm of centre cross on crown elongated. Row 1 stamp 1.



Wheel Flaw : Blue line across wheel of cart. Row 6 stamp 1.

Printed in photogravure by Harrison and Sons.
Perforation 15 X 14. Watermark Crown over G VI R.

ISLE OF MAN
POST OFFICES



SULBY



RAMSEY



KIRK MICHAEL



LAXEY



PEEL



DOUGLAS



BALLASALLA



PORT ERIN



PORT SAINT MARY



CASTLETOWN

AIR MAIL

BY AIR from Douglas I.O.M. to Manchester



FIRST UNITED KINGDOM
AIR MAIL BY
RAILWAY AIR SERVICES LTD.

*Plane did not proceed
to London from Manchester*



Mr. V. E. Deakin

6/o. Railway Air Services Ltd

1 H.S. Office

Picadilly

Manchester.

1934 Railway Air Service cover from Douglas, Isle Of Man to Manchester. Cancelled by a Douglas Universal single circle date stamp with 7 unbroken lines. Dated August 20th. 1934. First day of Railway Air Service from Isle Of Man to England.



13 MAY 1937

DAY OF ISSUE
CORONATION STAMPS

J. STEPHEN
c/o West Coast Air Services Ltd
Ronaldsway Aerodrome
Isle of Man, Gt. Britain.

1937 Coronation First Day Cover from Liverpool to Isle Of Man. Carried by West Coast Air Services. Circular cachet in red.

ISLE OF MAN REGIONAL ISSUE
1958 -- 1968



June 8th. 1964



Cream paper
August 18th. 1958

White paper
1965

Chalky paper
May 17th. 1963



February 7th. 1966



One centre phosphor band
June 27th. 1968

Two phosphor bands
July 5th. 1967

Design by J.H. Nicholson, portrait by Dorothy Wilding Limited.
Photogravure printed by Harrison and Sons. Watermark Multiple
Crowns. Perforation 15 X 14.

MADE IN ENGLAND BY THE REGISTERED PROPRIETORS OF THE TRADE MARK "WINDMILLING" FOR STANLEY GIBBONS LTD
"WINDMILLING" PATENT OFFICE NO. 3286

ISLE OF MAN REGIONAL ISSUE
AUGUST 18th. 1958



Design by J.H. Nicholson, portrait by Dorothy Wilding Limited. Photogravure
printed by Harrison and Sons. Watermark Multiple Crowns. Perforation 15 X 14.

MADE IN ENGLAND BY THE REGISTERED PROPRIETORS OF THE ISLE OF MAN - PHOTOGRAPHERS - DOROTHY WILDING LIMITED
LONDON - W. 1 - TWENTY-NINE, ALBEMARLE STREET, W. 1

ISLE OF MAN REGIONAL ISSUE
JUNE 8th. 1964



FIRST DAY COVER



MANX REGIONAL STAMP



Messrs Conis,
61, Stanthorpe Road,
London S.W.16.

Design by J.H. Nicholson, portrait by Dorothy Wilding Limited.
Photogravure printed by Harrison and Sons. Watermark Multiple
Crowns. Perforation 15 X 14.

ISLE OF MAN REGIONAL ISSUE
1968 -- 1969



June 24th. 1968

September 4th. 1968

One centre phosphor band.



September 4th. 1968

February 26th. 1969

Two phosphor bands.

Design by J.H. Nicholson, portrait by Dorothy Wilding Limited.
Photogravure printed by Harrison and Sons on chalky paper. No
Watermark. Perforation 15 X 14.

ISLE OF MAN REGIONAL ISSUE
SEPTEMBER 4th. 1968



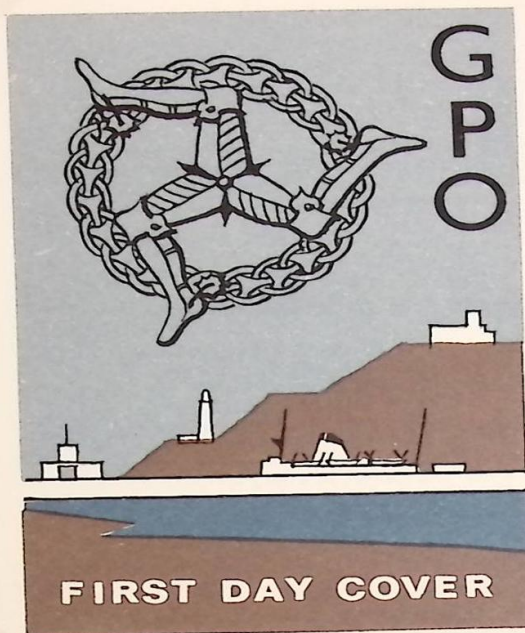
Constant flaw : small white spot in frame at
upper right corner (cylinder 1 no dot, row
20 stamp 1.)



White flaw in bottom left corner
(cylinder 1 no dot, row 20 stamp 12)

Design by J.H. Nicholson, portrait by Dorothy Wilding Limited.
Photogravure printed by Harrison and Sons on chalky paper with
two phosphor bands. No Watermark. Perforation 15 X 14.

ISLE OF MAN REGIONAL ISSUE
SEPTEMBER 4th. 1968



4 SEP 1968
DOUGLAS,
ISLE OF MAN

MANX PHILATELIC SOCIETY

(G. A. LOWE - HON. SEC.)

3, PORT-E-CHEE AVENUE,
DOUGLAS, ISLE OF MAN.



Design by J.H. Nicholson, Queen's portrait by Dorothy Wilding Limited.
Photogravure printed by Harrison and Sons on chalky paper with phosphor
bands. No Watermark. Perforation 15 X 14.

ISLE OF MAN REGIONAL ISSUE
DECIMAL CURRENCY
JULY 7th. 1971



Design by J. Matthews, Queen's portrait after a plaster cast by Arnold Machin. Photogravure printed by Harrison and Sons on chalky paper. One centre phosphor band (2½d.), two phosphor bands (others). No watermark. Perforation 15 X 14.

ISLE OF MAN REGIONAL ISSUE
LAST DAY OF BRITISH POSTAL SERVICES
JULY 4th. 1973

POST OFFICE
COMMEMORATIVE COVER

The last day
of the
British
Postal Services
in the
Isle of Man



Robert Teeney
185 Moss Road
Lambeg
LISBURN
Co Antrim
BT27 4LH

