

LOT PARTIALLY SCANNED

Due to the size or the complexity of this lot, only selected items are shown.

LOT PARTIELLEMENT SCANNÉ

Du à la taille ou à la complexité de ce lot, seuls les articles sélectionnés sont affichés.

LOS IST NUR TEILWEISE GESCANNT

Aufgrund der Umfangs und Vielschichtigkeit dieses Loses werden nur ausgewählte Stücke gezeigt.

LOTTO PARZIALMENTE SCANSIONATO

A causa delle dimensioni o della complessità di questo lotto, sono mostrati solo gli articoli selezionati.



















BASUTOLAND

1933



BASUTOLAND

1938.



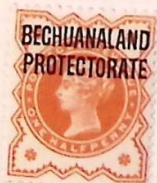
ROYAL VISIT.



















MAURITIUS









9.50



Plate 11

cat 651

min

Plate 12 x 11 1/2

cat 1.40

min

Plate 11

cat 701

min

SC52 cat 3.50



Plate 12 x 11 1/2

cat 4.75

min

Plate 12 x 11 1/2

cat 6.00

min

Plate 12 x 11 1/2

cat 3.50

min

Plate 12 x 11 1/2

cat 3.50

min



SC72 cat 6.00

Plate 11

cat 3.00

Plate 11



SC88 cat 651

SC89 cat 551

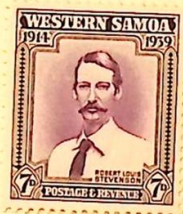


368509

[Handwritten signature]



1939 complete £5-



1944-49 complete

£5-



£4-







£6-

£3-



£15

118



£3-

£10-

£20-





£2.25







SOUTH AFRICA



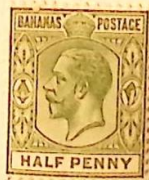














British Guiana Ship.





ST. VINCENT













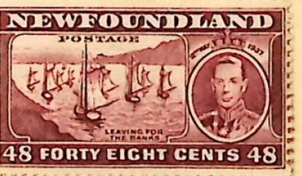


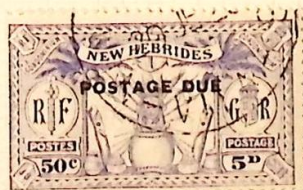
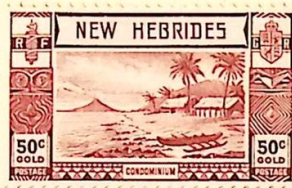
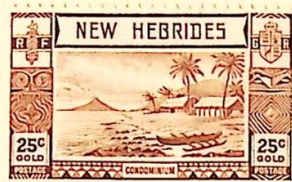
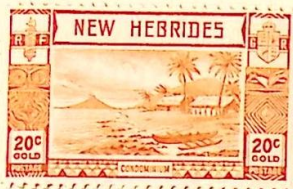
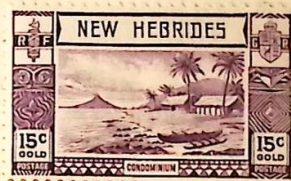
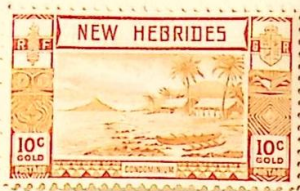
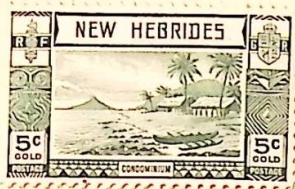


















PAPUA



1913 (JAN - APR) PERF. 12.



1915-28 - PERF 12.



1923-24

PERF 12.



1929-30

PERF 12.



1931-36

PERF 12.



1946



1914-21. PERF 14.



1916-18

PERF 14.



1918 - 20 PERF 14.



1918 - 23. PERF 14.



1924 - PERF 14.



1926 - 30. PERF 14.



1924.

NO WMK





1909 Gambia
Set of 14

