





6/81

Country **ANTIGUA**

Price

£1.50

Year ..... 1921 .....

S.G. No. **70-BK-G38**

**DARK SLATE**

~~Unmounted Mint~~

Fine Mint

~~Fine Used~~

Cat Value £

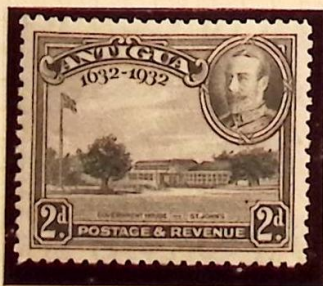
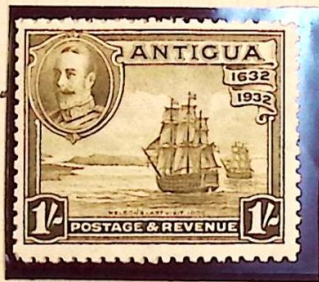


FRED ENTWISTLE

BOLTON STAMP CENTRE

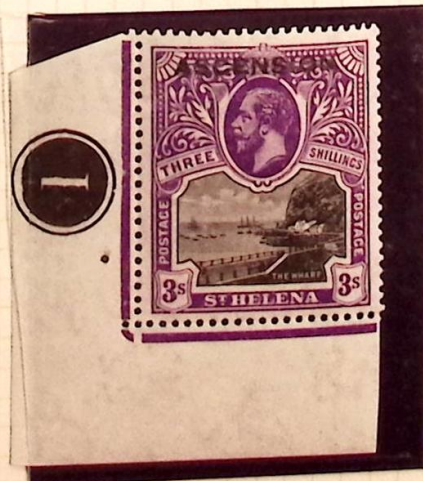
27 MAWDSLEY STREET, BOLTON  
0204 29271















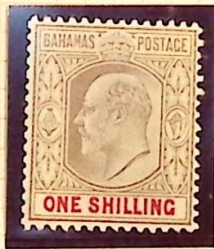
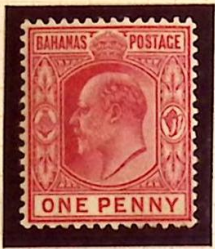


Head Frame Offset



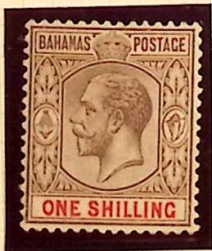
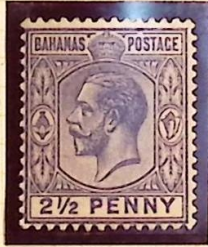
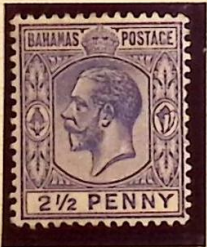
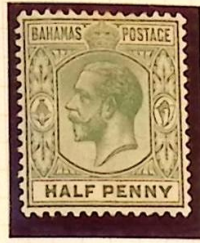
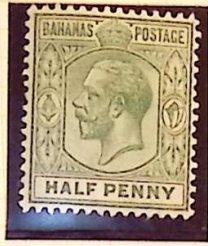


100



cat 53/2



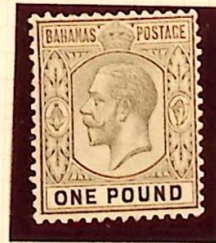
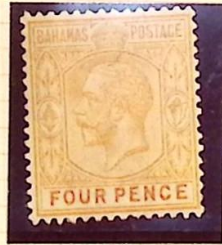










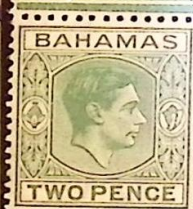


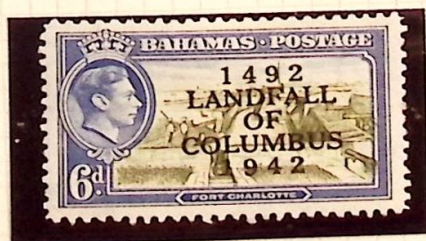
MADE AND PRINTED IN ENGLAND

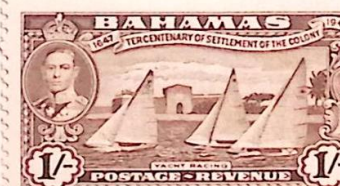














1 & 2 RS.

normal only

WIMPTON WAY, LONDON, S. E. 11.

ALBUM LEAF NO. 278. W.

S4170c  
monwealth 25  
- 17-4-62





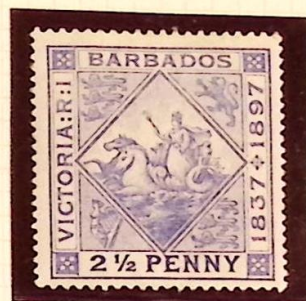






200

170





65

75

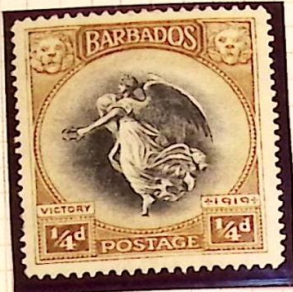
5















41-  
17-12-62

6-5-61







# BARBADOS.

RECESS PRINTED DE LA RUE & CO.

3 JANUARY - 1 MAY 1950 PERF 13¼ x 13(C).



CWI.



1(a).



2.



2(a).



3.



4.



5.



5(a).



6.



7.



8.



8(a).



9.

9(a).



10.



10(a).



11.



11(c).



11(d).



# BARBADOS

1938 - 1950 ISSUES CONTD.



12.



13.



13(a).



14.



14(a).



14(b).



14(c).



14(d).

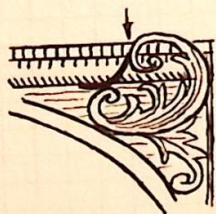


15.

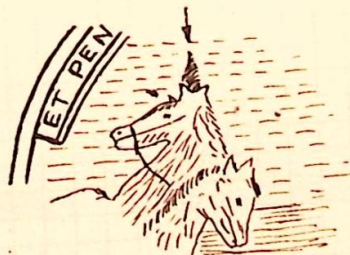


16.

## VARIETIES



11(a).



11(b).

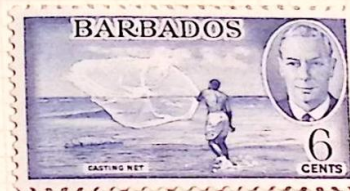
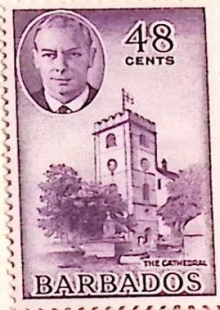
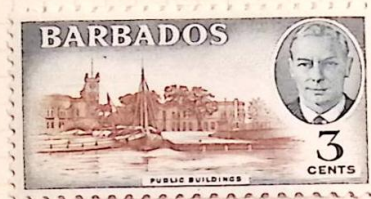
A CURVED LINE JOINS  
THE TOP RIGHT HAND SCROLL  
OCCURS ON ROW 7 STAMP 8.

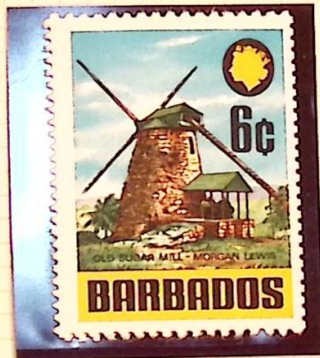
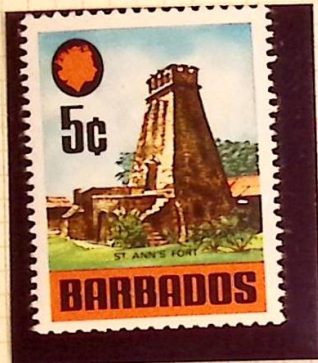
OFF SEAHORSE HAS AN  
UPRIGHT TUFT ON MANE  
RESEMBLING A PLUME  
OCCURS ON ROW 4 STAMP 1.

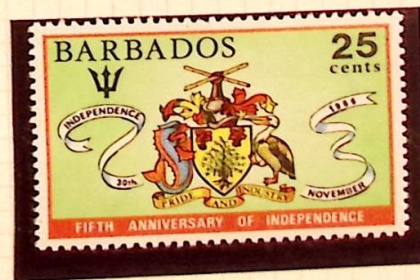
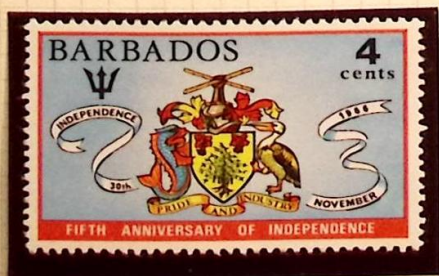
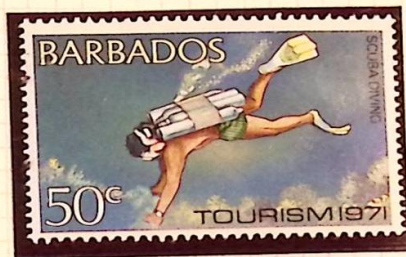
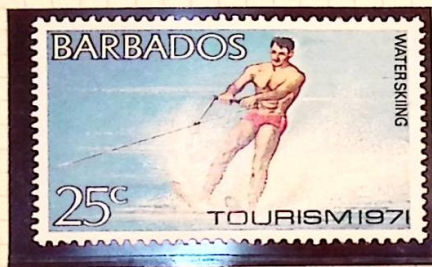
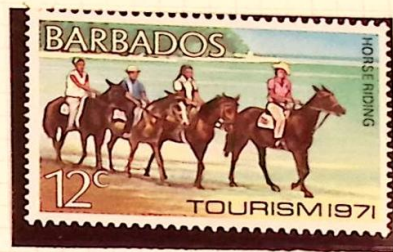
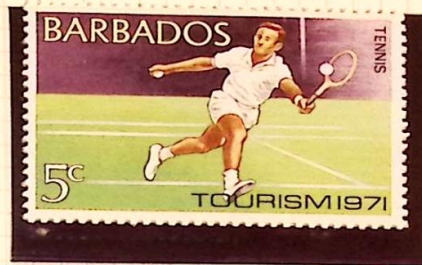
ALBUM LEAF NO. 276. W. A. BRANGNELL LTD., 111 SOUTHAMPTON WAY, LONDON, S.E.13.

MADE AND PRINTED IN ENGLAND



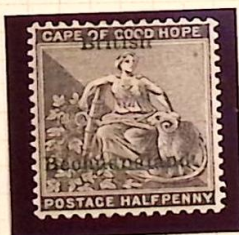








1675



103

15

32

ALBUM LEAF No. 378 W. A. PRANGNELL LTD., 168-171 SOUTHAMPTON WAY, LONDON, S.E. 5.

MADE AND PRINTED IN ENGLAND







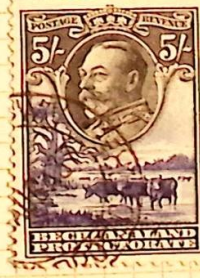
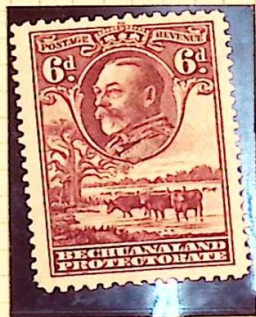
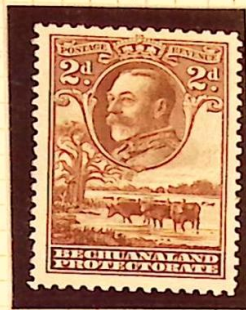
12

49

52



78/107  
13-7-66  
cut 2007 #325



275

325



- 20  
28-1-74



355

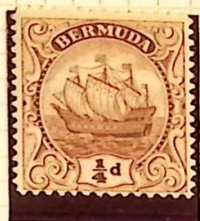






6

7



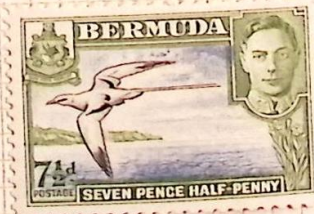
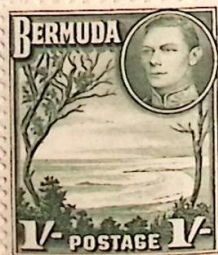
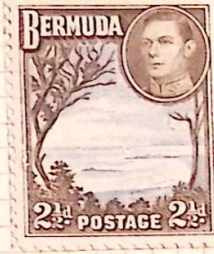
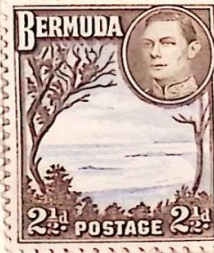




uh









45

100

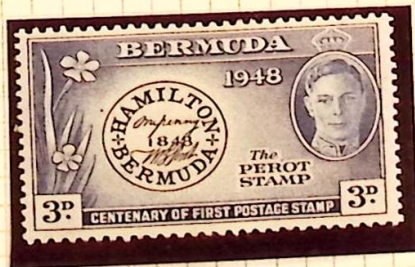
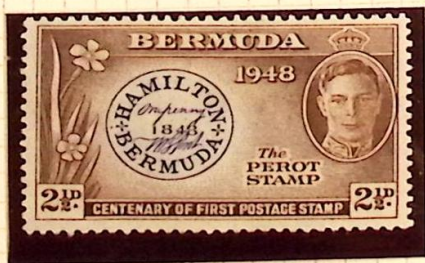
75

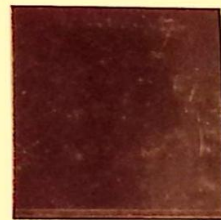
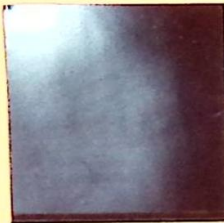
350

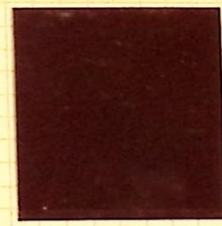
220

190

*exchanged.*



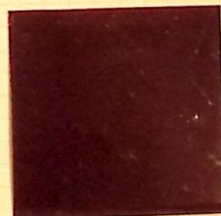
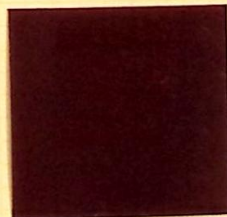






97

28



115





