



5

2

70



# HEALTH.

PRINTED 1929-30 BY GOVERNMENT PRINTING OFFICE, WELLINGTON. TYPO.  
PERF: 14 WATERMARK: SINGLE STAR AND NZ.



544



544A

PRINTED 1931 TYPO. BY GOVERNMENT PRINTING OFFICE, WELLINGTON.  
PERF. 14½ BY 14 WATERMARK: SINGLE STAR AND NZ.



546



547

PRINTED 1932-33 RECESS GOVERNMENT PRINTING OFFICE, WELLINGTON.  
PERF 14 (BOTH) WATERMARK: SINGLE STAR AND NZ (BOTH).



552



553



130  
115

3

25

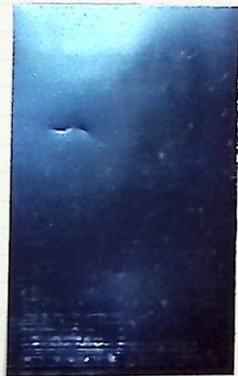














1957 No. 761/762  
WIREDMARK  
SIDEWAYS





1854  
MMR. UPRIGHT  
No. 761/762

all ms  
E90

Miniature Sheet 1s. 6d.



1 1

Miniature Sheet 2s. 0d.



1 1 1

MINIATURE SHEET 1s. 6d.



BLADDERY-WILKINSON & CO. LD. NEW MALDEN, SURREY.

A 1

MINIATURE SHEET 2s. 0d.



BLADDERY-WILKINSON & CO. LD. NEW MALDEN, SURREY.

A 1

MADE AND PRINTED IN ENGLAND

MINIATURE SHEET 1s. 6d.



BLADBUHY, WILKINSON & CO. LD. NEW MALDEN, SURREY.

A 1

MINIATURE SHEET 2s. 0d.



BLADBUHY, WILKINSON & CO. LD. NEW MALDEN, SURREY.

A 1



40



30

17

1

2



20



1/2d



30

210



75  
5



Experiment  
by D.H.R.  
on  
Wet Super  
P13



No Wmk



No Wmk



Wmk letters



Re only

1A

3 Re Entries

135



14



80



50



30

180



5d



6d



8d



1s

6s



6s

3s





Set Comp.  
27/60





15

15



















111



112



113



114



402 ~~115~~



403 ~~114~~



404 ~~301~~



405 ~~124~~



406



141



136



137



7/6

138



135



128



139

17/6



9/10

FRANKNELL LTD., 47 SOUTHAMPTON...







18



25



210



21





20



30



all over

128



40



over

10



over



38



53

196



34

cm

128

cm











Canada  
1900







0.00

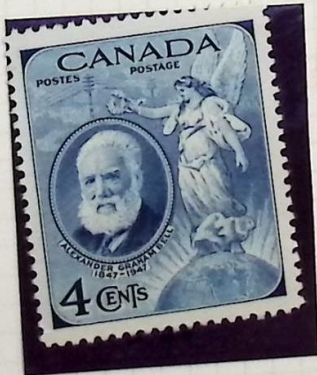




CANADA POSTAGE  
 THIS BOOK CONTAINS  
 THREE STAMPS EACH OF 1¢ 3¢ 4¢  
 PRICE - TWENTY-FIVE CENTS



POSTAL NOTE SCRIP  
 A CONVENIENT METHOD OF MAKING  
 SMALL REMITTANCES  
 ASK YOUR POSTMASTER







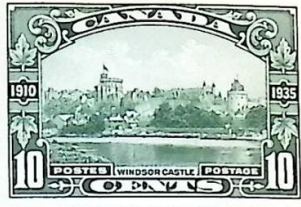


50

508











08112



05355



15612



51783





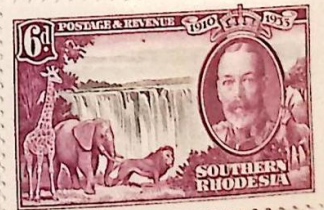
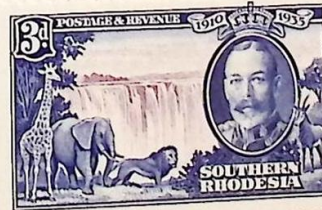
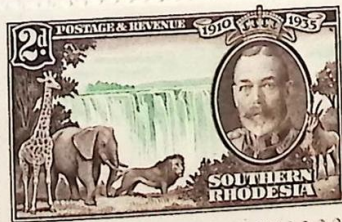
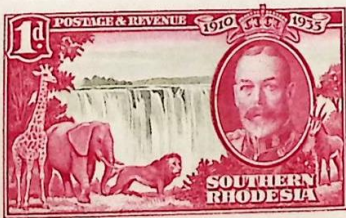








W. A. FRANCIS, LTD., 11, SOUTHAMPTON WAY, LONDON, E.C. 5



W. A. FRANKWELL LTD., SOUTHAMPTON WAY, LONDON, S.W.15  
MADE AND PRINTED IN ENGLAND





W. BRAGNELL & SONS, SOUTHAMPTON WAY, LONDON, S.E.5

MADE AND PRINTED IN ENGLAND

CVI  
C97  
120



W.A. FRANKELL LTD. SOUTHAMPTON WAY, LONDON S.E.5

MADE AND PRINTED IN ENGLAND





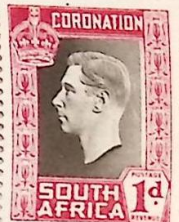
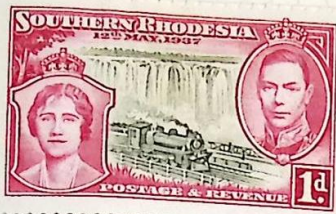






MADE AND PRINTED IN ENGLAND  
W. FRANKNELL LTD. SOUTHAMPTON, W. LONDON S.E.5



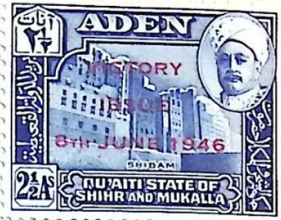




W. H. FRASER & NEAVE LTD. SOUTHAMPTON WAY, LONDON, S.E.5.

MADE AND PRINTED IN ENGLAND

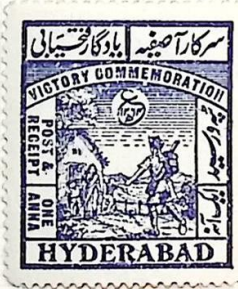
VIC  
42



MADE AND PRINTED IN ENGLAND



MADE AND PRINTED IN ENGLAND



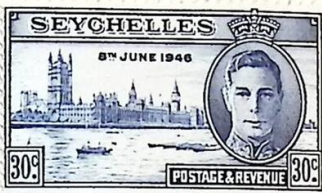
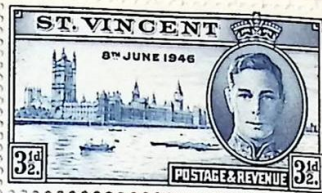
FRANKLIN, 111 SOUTHAMPTON WAY, LONDON, S.E.3  
MADE AND PRINTED IN ENGLAND





111 SOUTHAMPTON WAY, LONDON, S.E.9

MADE AND PRINTED IN ENGLAND



W. A. FRANKNELL, 111 SOUTHAMPTON WAY, LONDON, S.E.5

MADE AND PRINTED IN ENGLAND





W. A. FRANKS & CO. LTD., 111, SOUTHAMPTON WAY, LONDON, S.E.5  
MADE AND PRINTED IN ENGLAND

175



MANCHESTER, ENGLAND

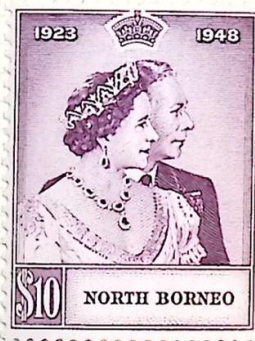


ALBUM LEAF NO. 276 W. A. FRANKNELL LTD., 111 SOUTHAMPTON WAY, LONDON, S.E.8  
MADE AND PRINTED IN ENGLAND



PRINTED BY W. A. FRANKNELL LTD. 111 SOUTHAMPTON WAY, LONDON, S.E.5

MADE AND PRINTED IN ENGLAND









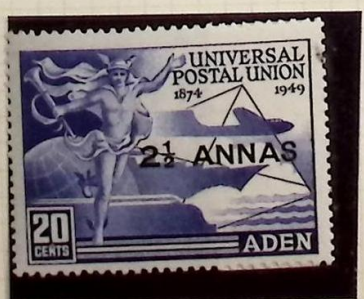
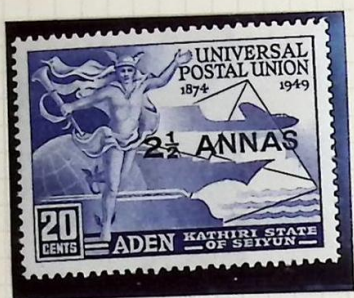
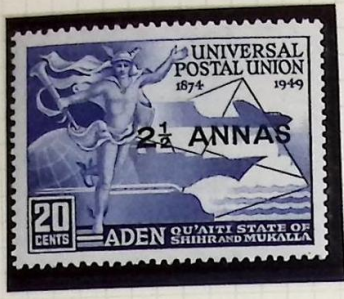
ALPHIN LEAF NO. 276. W. A. FRANKNELL LTD., 111 SOUTHAMPTON WAY, LONDON, S.E.8  
MADE AND PRINTED IN ENGLAND



MADE AND PRINTED IN ENGLAND



225  
opu





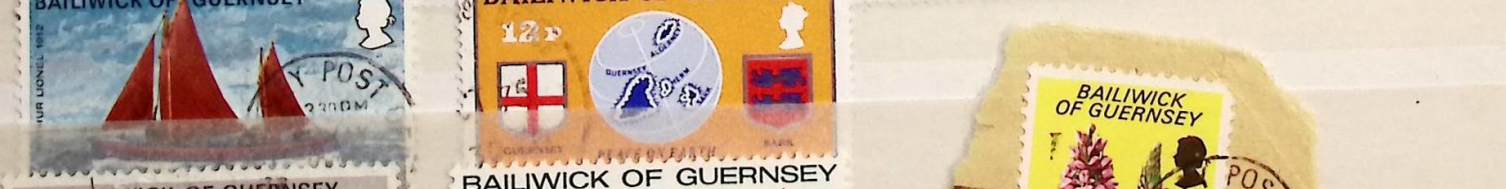
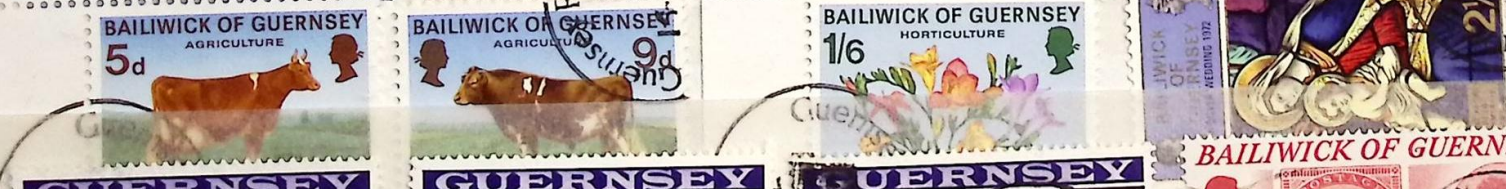












**BAILIWK OF GUERNSEY**  
POSTAGE  
10 SEP  
1866  
Thomas De La Rue  
THE GUERNSEY PRINTER 1795-1866

**BAILIWK OF GUERNSEY**  
POSTAGE  
13 OCT  
1972  
WILD FLOWERS SERIES  
2 1/2 P

