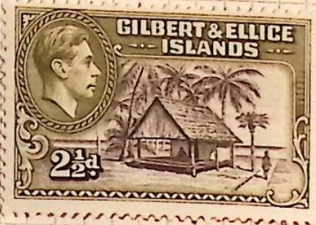
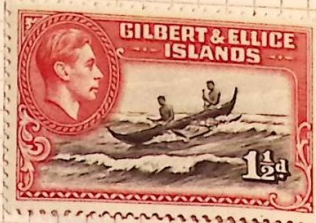


550



007



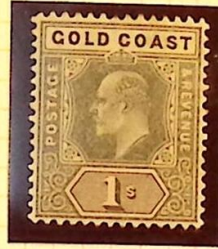
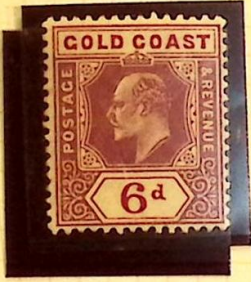




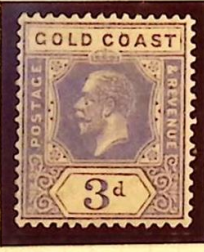
£ 1-25

90





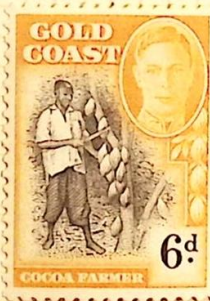
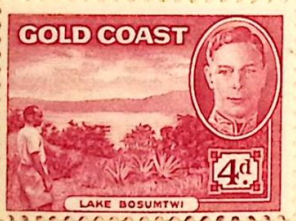


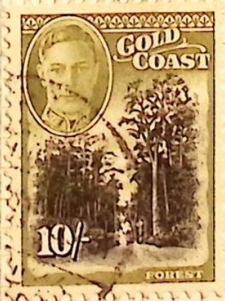
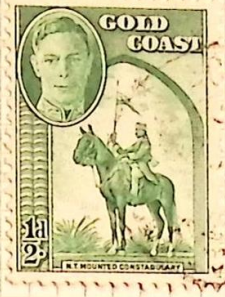
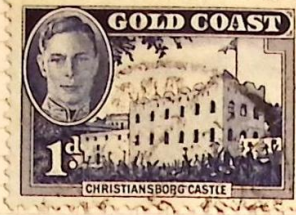






1948







Co
25



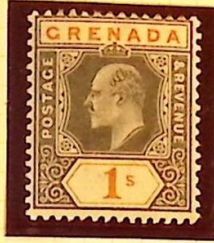




275



Green







5/25 x

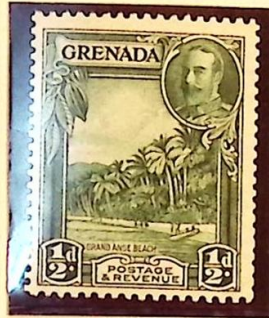
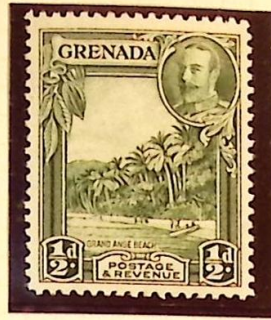


10/15 x

10/15





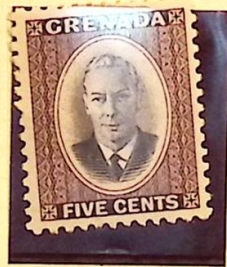




12.11.15



Ref No
10/100



GRENADA

POSTAGE DUE STAMPS (CONTD)

1 MARCH 1952

Typo. DE LA RUE & Co., LTD.

CHALKY PAPER.

WMK. MULTIPLE SCRIPT CO.

PERF. 14.



ERROR :- WMK. ST. EDWARDS CROWN.







25

90

165
mm



Q. 117



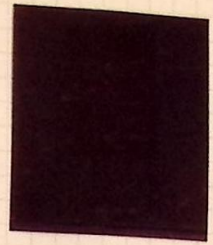
U. 111



1054



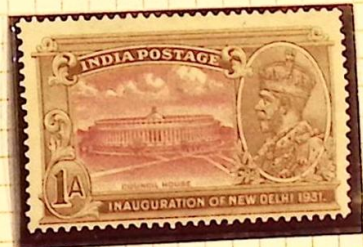
70
1784



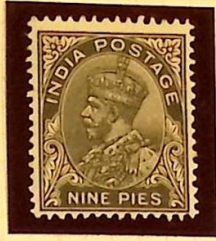


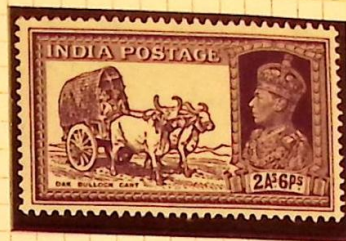






55

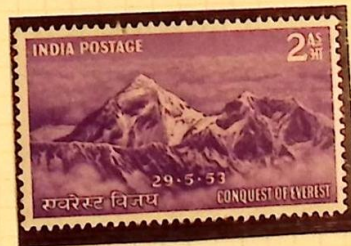
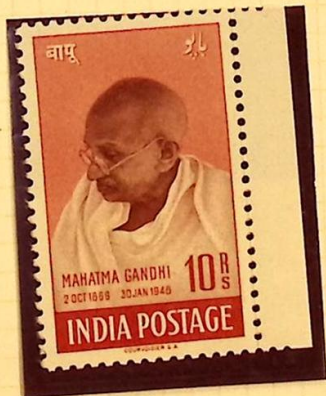
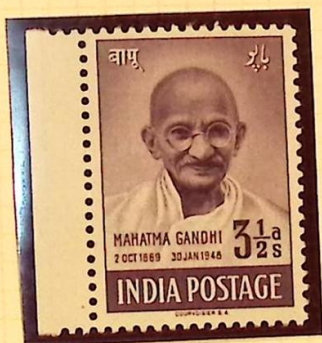
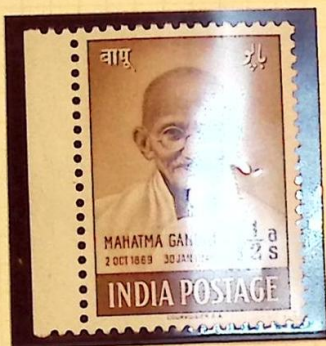




25 4
5
28 4
m/03



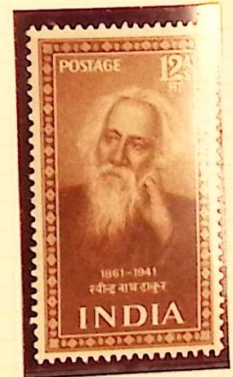
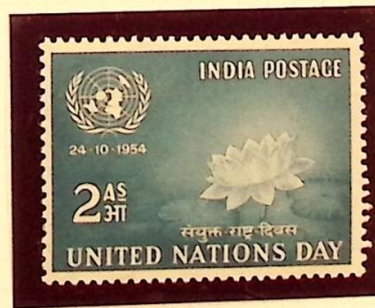
45
m



Handwritten mark

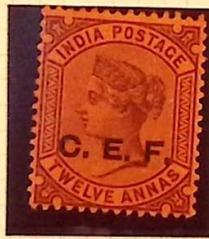






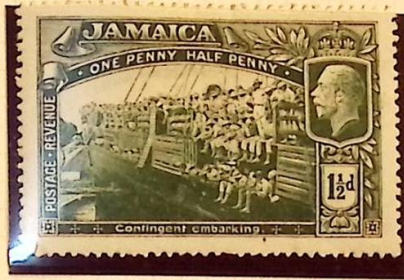












2/10/1915





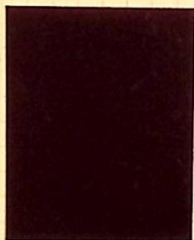
22/1950

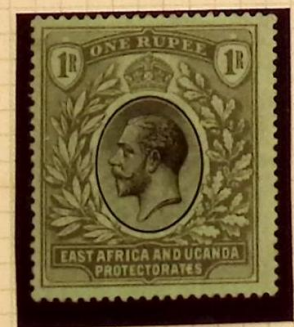
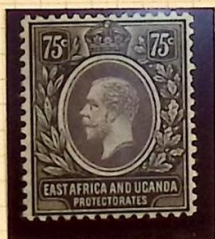
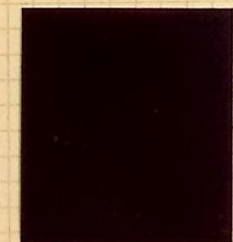












348













2

2



15



170



160



R. 300



350

180
720
850
max



25

50

80

135



20



16

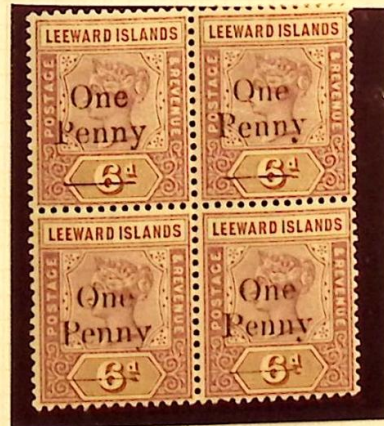
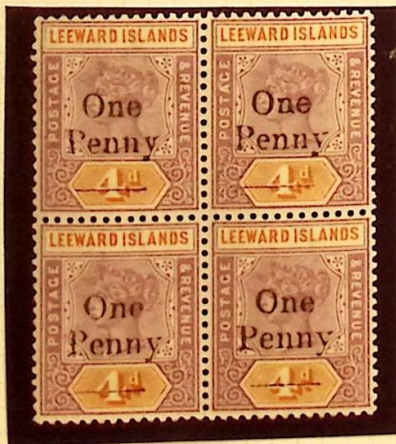
70

180

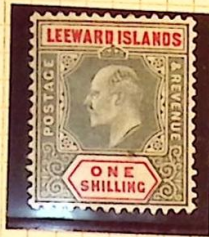
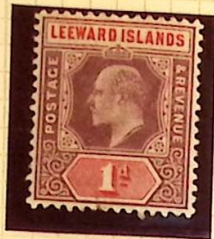




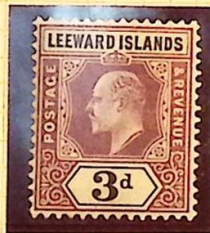




1902



1905/2



MADE AND PRINTED IN ENGLAND

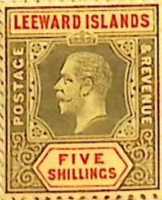
W. & A. G. 111 SOUTHAMPTON WAY, LONDON

97

6

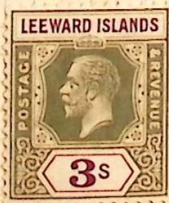
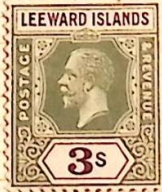
110

365

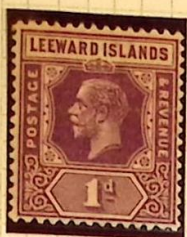


MADE AND PRINTED IN ENGLAND

130



MADE AND PRINTED IN ENGLAND



375

MADE AND PRINTED IN ENGLAND



14
5/3/30



105

180

445

400

75

720



mit Logen

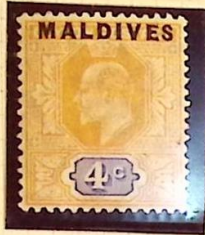
6

45
90

2

215
min









ALBUM LEAF NO. 276. W. A. FRANKNELL LTD. MADE AND PRINTED IN ENGLAND

Handwritten notes on a piece of paper, including 'CA' and '170'.

170

170

A. PRANG & CO. LTD., 109-111 SOUTHAMPTON WAY, LONDON, S.E.5.
MADE AND PRINTED IN ENGLAND



187
1807-11
MALTA
26/11-1917



Handwritten notes in the bottom right corner, including "465 + 142 = 607" and "82/50".



276



190



350

Script
18-8

proof? -
Troy



170

230





170

115

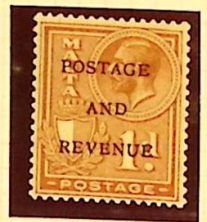
95

170

205
170
375



W. H. FRANKELL, 10, ABLETT, SOUTHAMPTON WAY, LONDON, S.W. 11
MADE AND PRINTED IN ENGLAND



12/11
20

170
11/11



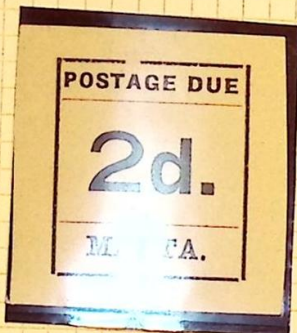






W. A. FRANGNELL LTD., 109-111 SOUTHAMPTON WAY, LONDON, S.E.3.
MADE AND PRINTED IN ENGLAND







45

5

5