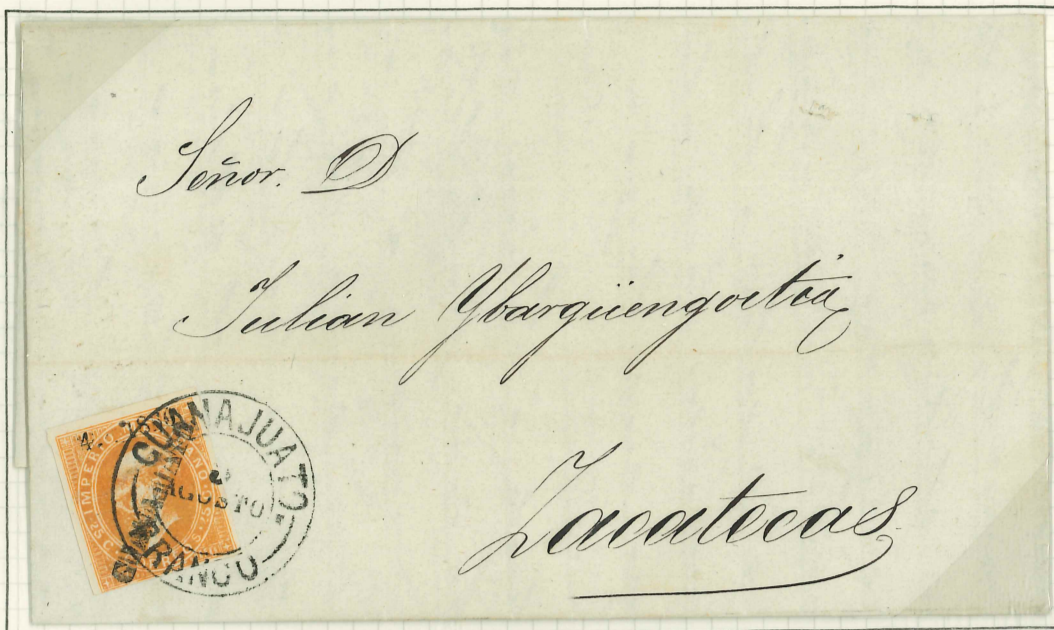


THE MAXIMILIAN ISSUE OF MEXICO, 1866-67.

DISTRICT OF GUANAJUATO.

25c ORANGE, PLATE I, LITHO.
CONSIGNED : AUGUST 5, 1866.
INVOICE No : 4.
No. SENT : 4200.



AUGUST 9, 1866. COVER TO ZACATECAS WITH 25c USED FROM GUANAJUATO. EARLY USAGE.



7c UNUSED, INVOICE No.
ERROR '3' FOR '4', ONLY
FOUND ON THIS VALUE AND
SUB-CONSIGNMENT 3, TO
SILAO.



13c, 1050 SENT. SUB-
No. 1 TO LEON.



25c, 4200 SENT. SUB-
No. 2 TO YRAPUATO.



25c, SUB-No. 3 USED
IN SILAO.



13c, SUB-No 3 USED
IN SILAO.

THE MAXIMILIAN ISSUE OF MEXICO, 1866-67.

DISTRICT OF GUANAJUATO.

13c DEEP BLUE, LITHO.
25c ORANGE BUFF, PLATE I, LITHO.
CONSIGNED: AUGUST 5, 1866.
INVOICE No: 4.
No. SENT: 13c: 1,050.
 25c: 4,200.



AUGUST 23, 1866. PIECE TO GUANAJUATO WITH 13c SUB-CONSIGNMENT No. 3, FROM SILAO WITH NEGATIVE SEAL 'CORREOS/SILAO', ADHESIVE TIED BY DOTTED CIRCLE.



SEPTEMBER 16, 1866. COVER TO MEXICO CITY WITH 25c SUB-CONSIGNMENT No. 11, TIED BY 'LEON/FRANCO' CIRCULAR DATESTAMP.

THE MAXIMILIAN ISSUE OF MEXICO, 1866-67.

DISTRICT OF GUANAJUATO.

13c BLUE, LITHO.
CONSIGNED: AUGUST 24, 1866.
INVOICE No: 47.
No. SENT: 2100.



SEPTEMBER 26, 1866. COVER TO LEON WITH 13c CANCELLED 'GUANAJUATO/FRANCO' CDS.



25c, SUB-CONSIGNED
13. CANCELLED BY
SILAO 'WHIRL'.



25c, 2100 SENT, SUB-
CONSIGNMENT II,
LEON CDS.

50c DEEP GREEN, POSITION 23-24, SHOWING
FLAW ON 'C' OF LEFT '50c', USED ON REGISTERED
PIECE TO QUERETARO. 14-00 OF THE 50c SENT.

THE MAXIMILIAN ISSUE OF MEXICO, 1866-67.

DISTRICT OF GUANAJUATO.

13c BLUE, LITHO.
CONSIGNED: AUGUST 24, 1866.
INVOICE No: 47.
NO. SENT: 2100.



OCTOBER 23, 1866. COVER TO YRAPUATO WITH 13c USED FROM GUANAJUATO. THE DOT ABOVE 'E' OF 'IMPERIO' IS NOT CONSTANT.



13c, EXTENSIVE TRANSFER DAMAGE TO 'MEXICANO', USED GUANAJUATO.



PIECE WITH 50c GREEN, 1400 SENT, AND ENGRAVED INVOICE 112 13c BLUE, 20000 SENT; USED FROM GUANAJUATO.



13c, SUB-CONSIGNMENT 11, LEON CDS.

THE MAXIMILIAN ISSUE OF MEXICO, 1866-67.

DISTRICT OF GUANAJUATO.

13c BLUE, LITHO.
CONSIGNED : SEPTEMBER 20, 1866.
INVOICE NO : 83.
NO. SENT : 3500.



OCTOBER 22, 1866. COVER TO LEON WITH 13c FROM GUANAJUATO. THE INVOICE WAS 13c VALUES ONLY, AND MANY SHOW SIGNS OF EXTREME PLATE WEAR, NOTE RETOUCH ON 'CA' OF 'MEXICANO' READING 'OA' AND FRAME BREAK ALONGSIDE.



SHOWING PLATE WEAR ON 'c' OF LEFT '13c' AND 'IM' OF IMPERIO.



WHITE GUIDE LINE FROM LEFT FRAME AND '13' AT RIGHT JOINED.



EXTRA OUTER FRAME LINE IN S.W. CORNER.



FLAW BETWEEN 'MP' OF IMPERIO. SUB-CONSIGNMENT 14 TO LEON.



SUB-CONSIGNMENT
14, LEON. NOTE RE-
TOUCHED 'N' IN
'MEXICANO'.

SCHATZKES: 498.



SUB-CONSIGNMENT
22, LEON. THE 13c
WAS THE ONLY VALUE
CONSIGNED ON # 83.
DOT BETWEEN 'MP' OF IMPERIO.



SUB-CONSIGNMENT.
15, TAPUATO. NOTE
RE-TOUCHED 'N' IN
'MEXICANO'.



7c PALE LILAC. A
MIS-CUT EXAMPLE
TO ALLOW FOR '47-
1866' TO SHOW.
560 SENT.



13c BLUE, 2100 SENT.
SUB-CONSIGNMENT
8 TO LEON.



25c ORANGE, PLATE
II, 2100 SENT. SUB-
CONSIGNMENT 12
TO LEON.



50c GREEN, 1400
SENT.



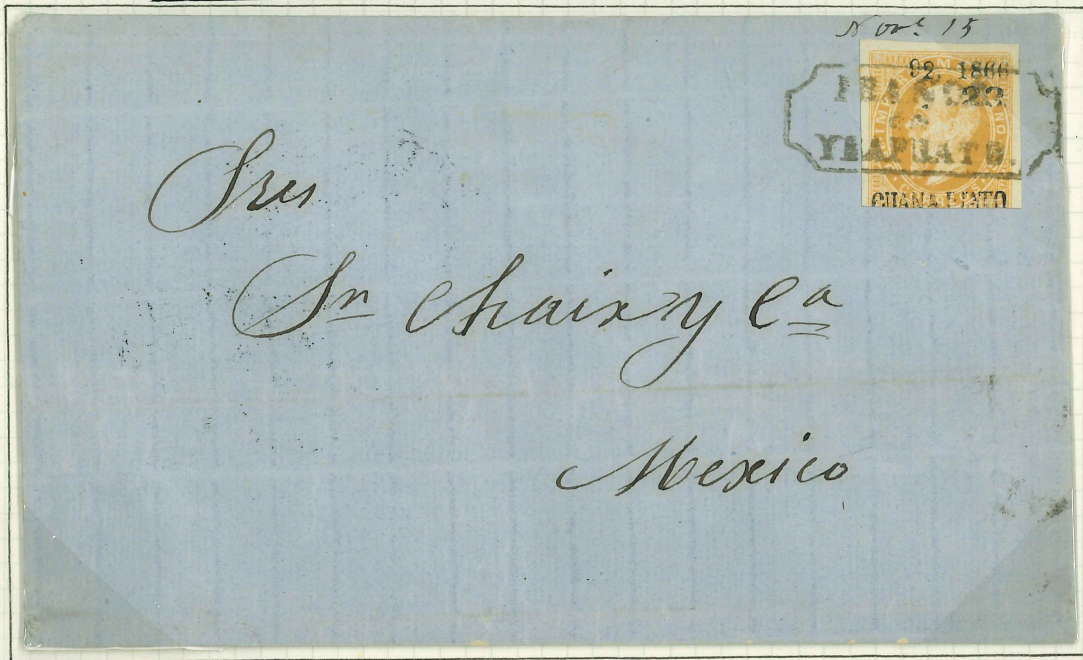
25c, SUB-CONSIGNMENT
16, TO LEON.



13c, SUB-CONSIGNMENT
14, TO LEON.



25c, SUB-CONSIGNMENT
24, TO LEON. TRANSFER
FLAW: BROKEN 'C' AND
BLURRED 'O' AND 'C'
OF RIGHT '25c'.



NOVEMBER 15, 1866. COVER TO MEXICO CITY WITH 25c, SUB-CONSIGNMENT 23, FROM YRAPUATO. BACKSTAMPED MEXICO FIVE DAYS LATER. THE 25c WAS THE ONLY VALUE INVOICED.



SUB-CONSIGNMENT
30, TO LEON.



SUB-CONSIGNMENT 25,
TO LEON.



SUB-CONSIGNMENT
29, IRAPUATO.

SCHATZKES: 503,498.

THE MAXIMILIAN ISSUE OF MEXICO, 1866-67.

DISTRICT OF GUANAJUATO.

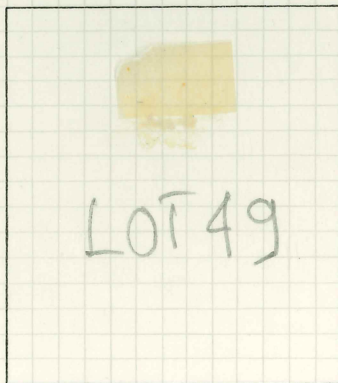
13c, BLUE, ENGRAVED.
CONSIGNED: NOVEMBER 3, 1866.
INVOICE NO: 112.
NO. SENT: 10,000.



NOVEMBER 15, 1866. COVER TO LEON WITH 13c CANCELLED 'GUANAJUATO/FRANCO' CDS.



SUB-CONSIGNMENT 27,
IRAPUATO.



SUB-CONSIGNMENT 30,
LEON.

BLOCK OF FOUR CANCELLED 'FRANCO-
GUANAJUATO' DATED JUNE 8, 1867.
EXCEPTIONALLY LATE USAGE, THE
EMPEROR WAS SHOT ON JUNE 19.

SCHATZKES: 477,476.