

Austrian Airmail to 1938

South to Africa

At the end of the 1920's both Imperial Airways and KLM made a stop in Egypt on their routes to India and Air France had routes to their North African territories but it was not until 1931 that these were extended south towards central and southern Africa. The carrier and routes depended on the countries position and its European connections



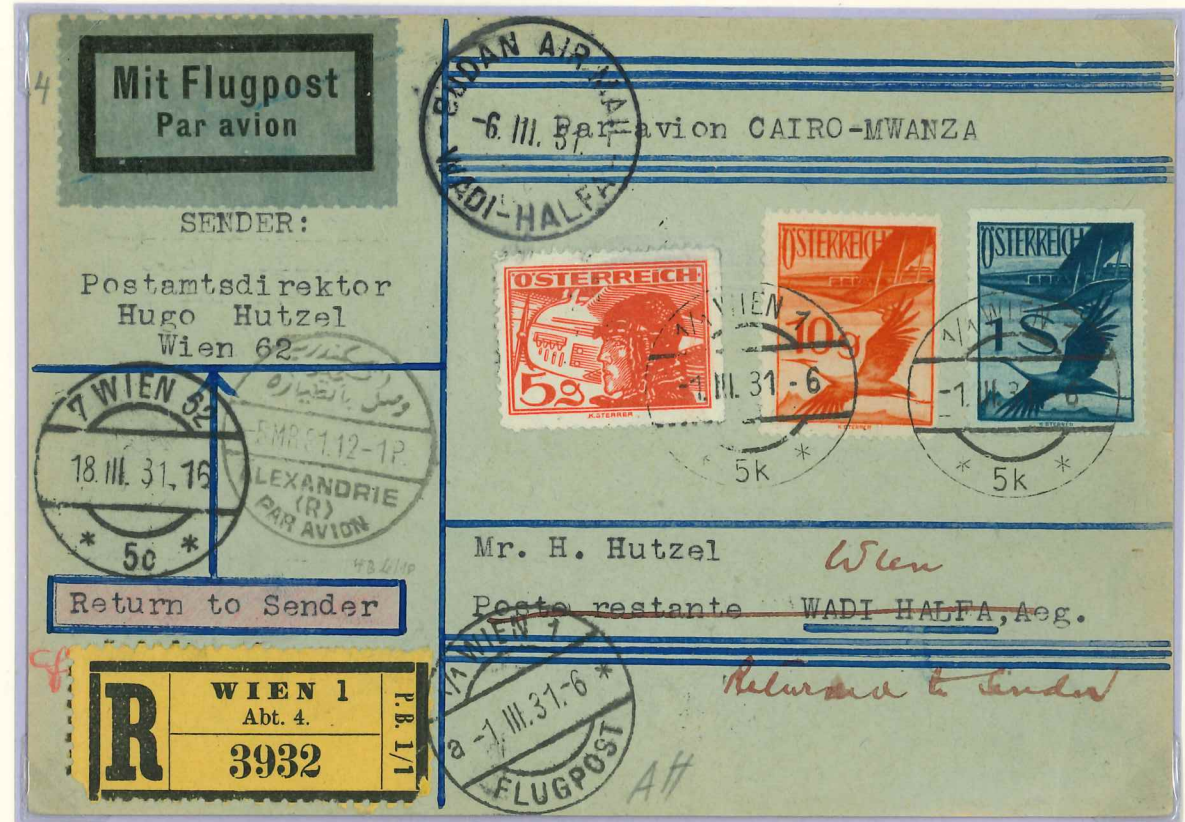
Both Imperial Airways (to Cairo) and KLM (to Alexandria) flew from Athens to Egypt and the service used can be determined by place of arrival.

Above - Letter Vienna 2nd July 1937 carried KLM to Alexandria 3rd at 11.15 am, train to Cairo arrived 7.30 pm. Postage - Letter 60g, airmail fee 50g.



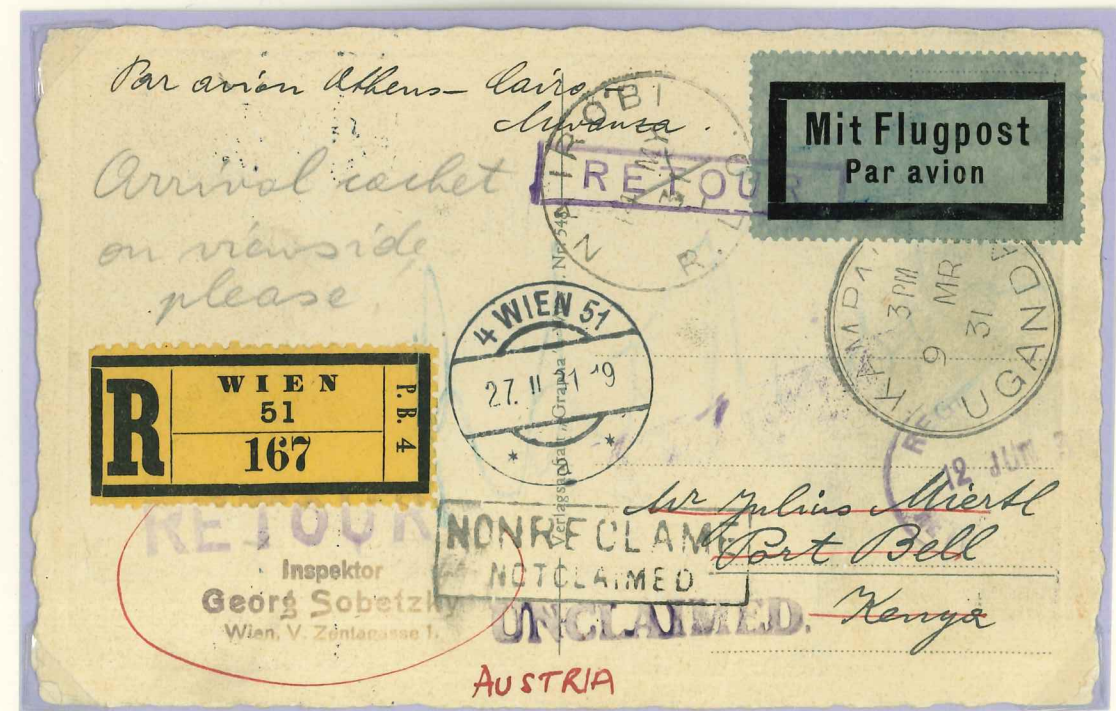
Imperial Airways

From 1st March 1931 Imperial Airways gradually extended their London - Cairo route through East and South Africa.



Above - Letter first flight Vienna to Sudan. By train to Athens then air to Cairo - Alexandria - Khartoum arrived 7th. Postage - Printed paper 8g, registration fee 60g, airmail fee (provisional) 90g - this was later fixed at 80g.

Below - Card carried on to Juba - Kisumu - arrived Kampala 9th (- Mwanza). Postage - Card 24g, registration fee 60g, airmail fee (provisional) 50g - later fixed at 40g. Stamps value 135g on face.



South to Africa

1932 saw the expansion of routes to Southern Africa.

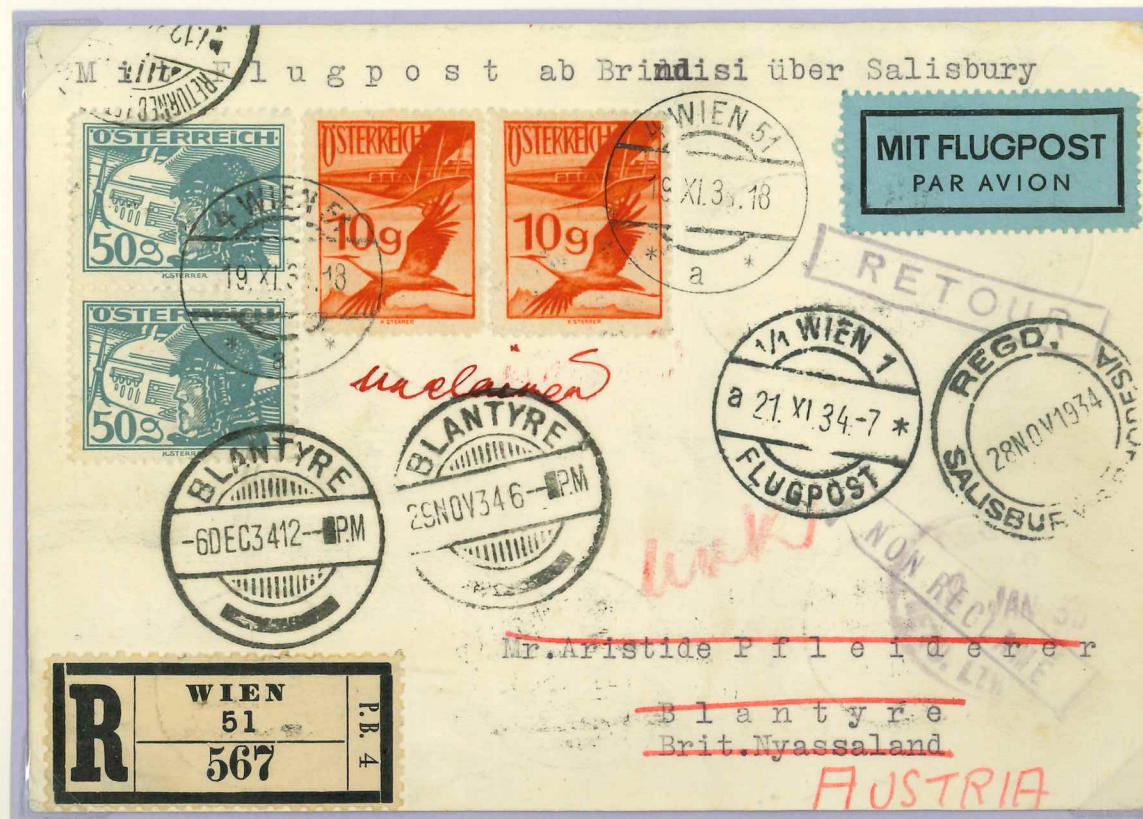


Above – Card and copy reverse. Unofficial flight to South West Africa 20th January 1932. Vienna by train to Brindisi then IA Athens – Alexandria – Cairo – Nairobi – Broken Hill – Salisbury – Johannesburg – Kimberley 7th February for air service to Windhoek arrived 9th
Postage – card 24g, registration fee.60g, airmail fee (provisional) 40g.

Below – Letter carried on the first official flight Vienna 13th July 1932, route as above to Johannesburg.
Postage – Printed paper 8g, registration fee 60g, airmail fee (now fixed) 120g

Imperial Airways

Various African and International airlines began flying within and to many parts of Africa in the 1930's with the result that Imperial Airways decided to set up a number of 'feeder services' from main centres.



Above – Card Vienna 21 November 1934 IA South Africa route to Sailsbury then transferred to Rhodesia & Nyasaland Airways to Blantyre.
Postage – card 35g, registration fee 70g, airmail fee 95g (additional postage on reverse)

Below –Card Linz to Vienna 14th October 1935 IA to Sailsbury 20th then IA Africa Line to Beira, Mozambique 22nd
Postage – Printed paper 8g, registration fee 70g, airmail fee 90g.



South to Africa

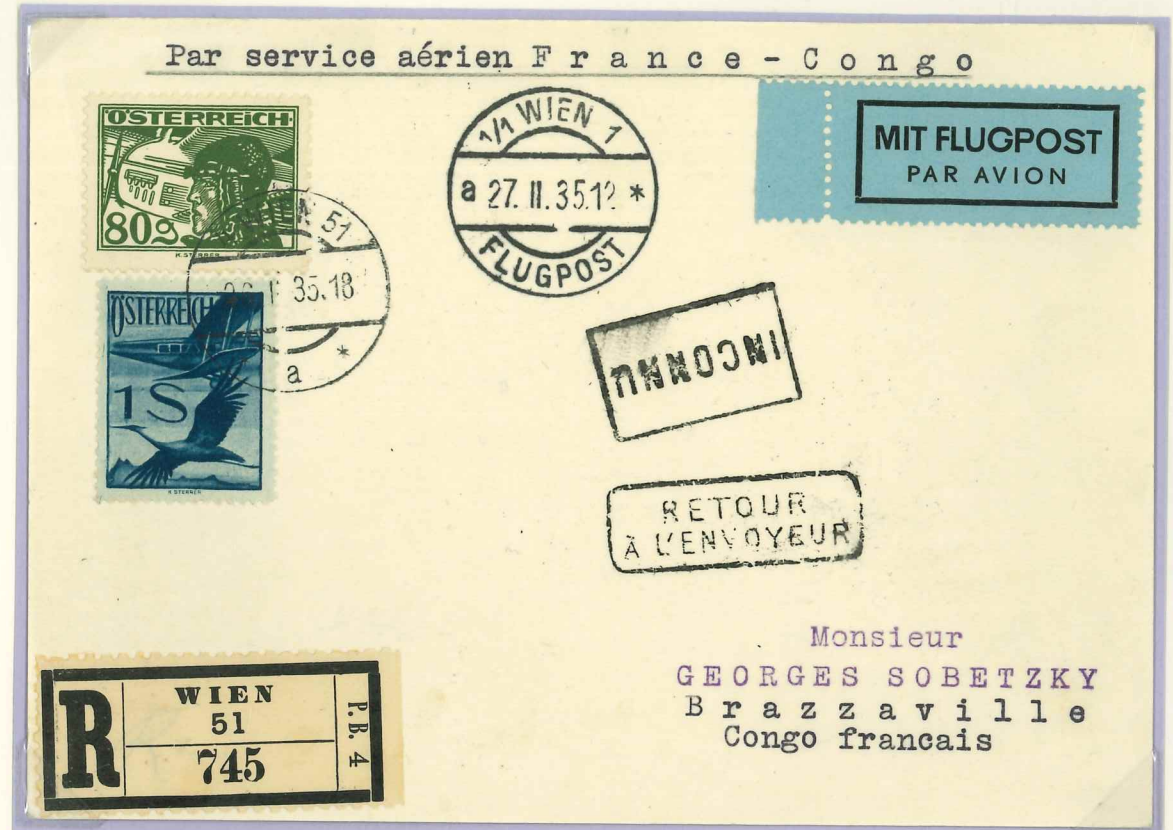
Air France extended the Paris – Marseille route to French North and West Africa.



Above – Card Vienna 1st November 1929 to Paris, Toulouse, Tangier, Rabat, Casablanca then first flight to Port Etienne (Mauritania) and Dakar (Senegal) for St. Louis arrived 5th.
Postage – Card 24g, registration fee 60g, airmail fee 90g.

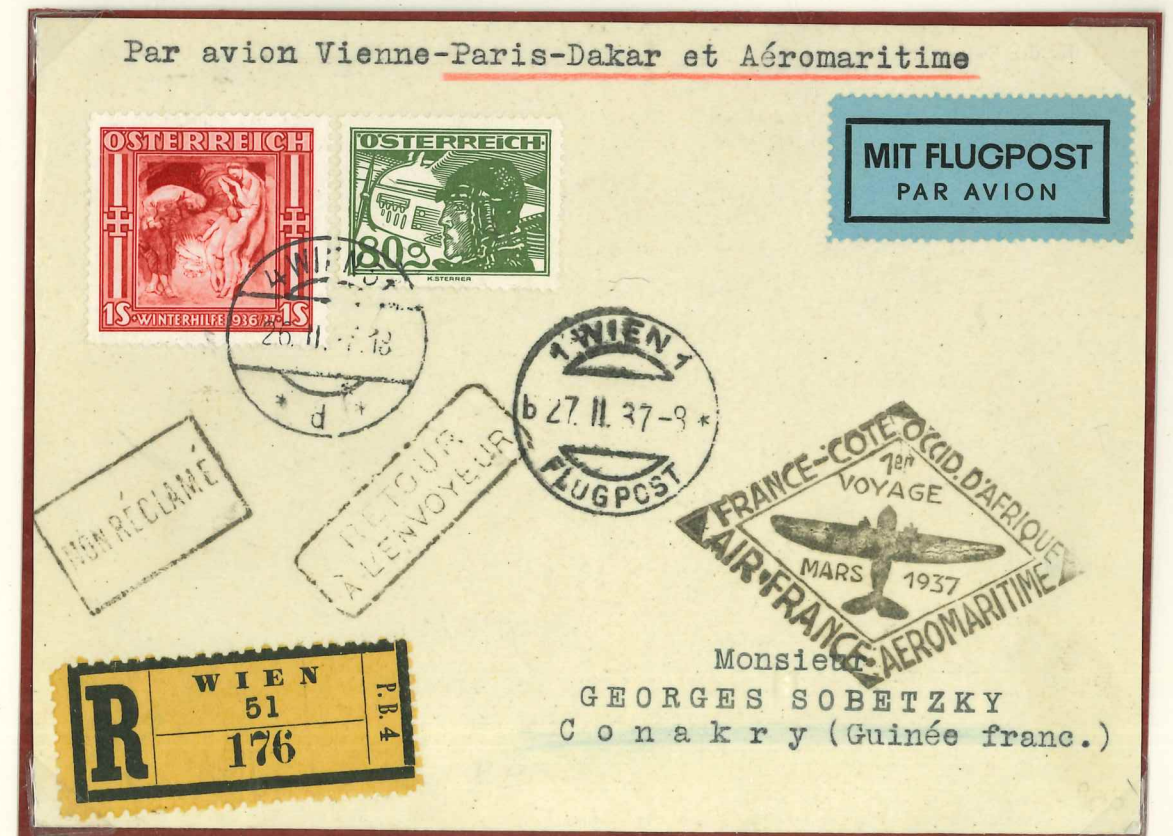
Below – Letter Vienna 5th May 1931 to Paris and route as above arrived Casablanca 9th.
Postage – Letter 40g, registration 60g, airmail fee (from 1st May) 40g [a reduction from 75g hence overpayment].

Air France



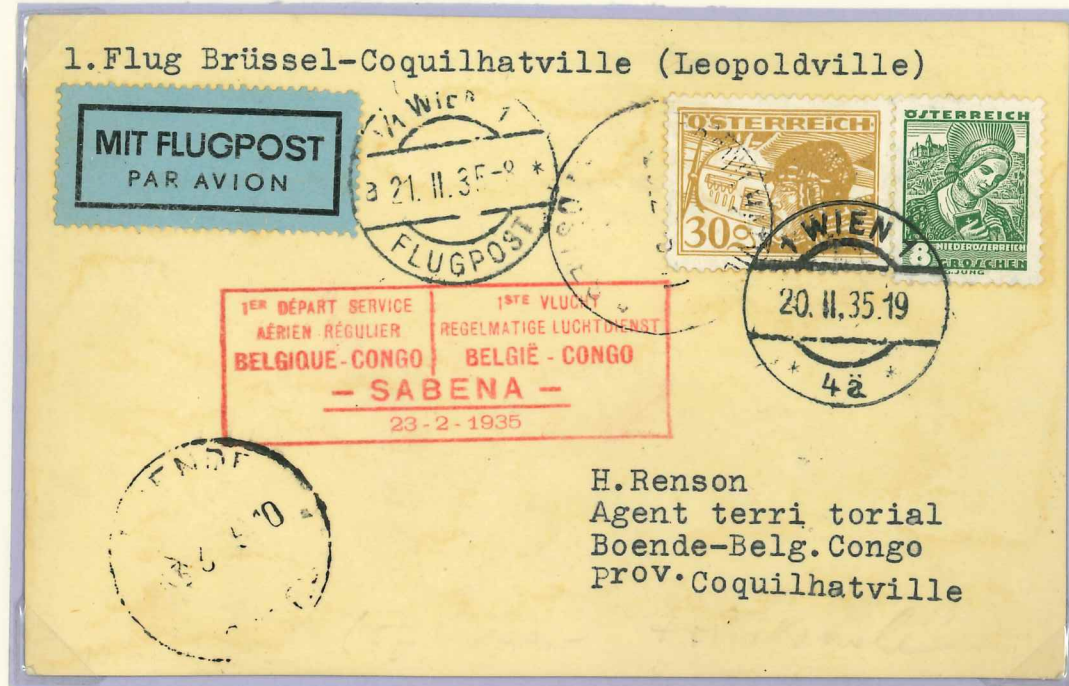
Above – Card Vienna 27th February 1935 Paris, Algiers – First flight El Goles, Aoulef, Goa, Niamey, Zinder, Fort Lamy, Fort Archambault, Bangui, Coquilhatville, Brazzaville (French Congo) arrived 7th March.
Postage – Card 30g, registration fee 70g, airmail fee (provisional) 70g – fixed on 11th March at 75g.

Below – Card Vienna 27th February 1937 for First flight Air France and Aéromaritime Paris, Marseilles, Dakar, Ziguinchor, Conakry arrived 1st March (and onto Benin). Only 7 recorded items from Austria on this flight.
Postage – Card 30g, registration fee 70g, airmail fee (provisional) 80g – fixed on 12th April at 60g.



South to Africa

On 23rd February 1935 the Belgian airline Sabena introduced a service to the Belgian Congo. From November 1936 the flights connected with the Madagascan airline service to Rhodesia and Madagascar.



Above – Card Vienna 20th February 1935 to Brussels 23rd Marseille, Oran, Colomb Béchar, Niamey, Zinder, Fort Lamy, Fort Archambault, Libenge, Coquilhatville arrived 28th.
Postage – Letter 60g airmail fee 150g

Below – Card Vienna 14th November 1935, Brussels, route as above to Coquilhatville and Léopoldville then Banning, Elizabethville 21st, Broken Hill, Mozambique, Tananarivo arrived 24th.
Postage – Card 30g, airmail fee to Belgian Congo 80g, internal flight 125g.

Belgian, Swiss and Italian airlines

The Swiss Ad Astra Aero Company operated flights from Zurich to Gao in French Sudan. The third flight departed on 2nd December 1930.

On 1st May 1934 the Italian airline SANA introduced a service from Rome to Tunis. On 28th October 1934 they joined two other Italian airlines to form Ala Littoria Società



Above – Letter Vienna 29th November 1930, Zurich 2nd December, Perpignan to Cartagena (diverted from Alicante), Fez, Morocco and Colomb Béchar, Algeria arrived 12th then forwarded to Liverpool, England.
Postage – Card 24g, registration fee 60g airmail fee to Switzerland 15g. Swiss airmail fee 350g

Below – Card Vienna 6th February 1936, Rome, train to Brindisi 7th, Asmara, Eritrea 18th for Assab.
Postage – Card 35g, registration fee 70g, airmail fee 50g.

