



1925/9  
no 1  
SG 14  
£ 55  
SG 114  
225  
£ 279



SG 16  
£ 100



SG 17  
£ 375  
£ 400



X2/x  
SG 4  
£  
£ 4.50  
En.  
SHEET NO.  
R450



\* F  
SG 85  
£ 15



\* VVF  
SG 165  
£ 180



1935  
\* HR  
SG 18a  
SG 18f  
Original  
Line by  
TILLET  
R2500



LARGE SHIFT UP OF  
VIGNETTE - ENG STAFF  
TOUCHES RHODESIA  
SINCE R.V. R1800





1937  
 XF  
 SKE 3  
 SACC  
 22/14  
 SPECIMEN  
 R4000



1938/52  
 10  
 SKE 12  
 SACC  
 25/14  
 R170



'01  
 TICKBIRD  
 FLAM  
 SACC 29b  
 R6000 EN  
 R450 GA



'01  
 TICKBIRD  
 FLAM  
 SACC 30a  
 R580 EN



1938  
 XX  
 SACC  
 R200

XX  
 SACC 26b  
 Core pr  
 1cc Jan  
 R550





Mark Above Elephant (R3)  
 Flaws On Right 2 (R4/6)

XX  
 SG 25  
 + 2 vms  
 R 600



Corner Block Of 8, Showing  
 Flaw On Base Of Crown (R12/3)

XX  
 SG 25  
 var  
 R 600



XX  
 CAENGES  
 SG 25  
 # 844  
 in  
 £ 5.



XX Damaged "1d" Plate Block  
 £ 60/R1200 SG 28 PL II + V.





XX  
JG 272  
R 8 45  
+ 1207 02  
2/20



**RHODESIA (NORTHERN)**

**1951 George VI 1d green in marginal block of 25 with "EXTRA BOARMAN" variety.**

**Superb MNH.**

**SG 28, 28a (£ 386+)/SACC 28, 28b (R 7,000)**

**R 4,000**







3

XX  
SG 26  
A 田 3'  
\*25



SG 34  
10'  
1MP1 E  
R 500



XX  
SG 36  
RE-ENTRY  
LEFT  
FRAME  
\*20



XX  
SG 38  
V.  
\*15x4

Two blocks showing Top Part Of Left  
largely Omitted. on on 4 stamps



Two blocks In Yellow-Orange &  
SG 40 田 \*40 Red-Orange.







1948  
 XX  
 SACC 49  
 SG 49  
 R2000  
 K110

1948  
 101  
 set 2  
 SACC  
 4519  
 R2020

1953  
 XX  
 set 14  
 SACC  
 6174  
 R2011

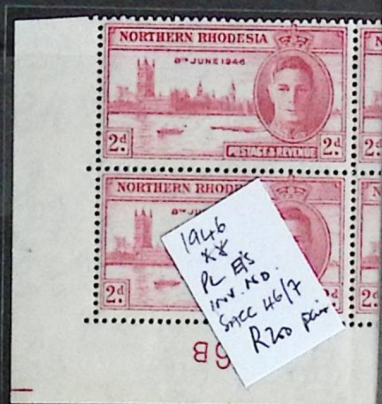


1953  
 101  
 set 14  
 SACC  
 6174  
 R2431



1953  
 XX  
 set of 10  
 boxes  
 (no 9d)  
 SACC  
 61-68  
 R259  
 per  
 K155







1963  
 \*F  
 Some HR  
 set of  
 Spec  
 25/88  
 R1470  
 For \*\*



1963  
 '10"  
 set of  
 Spec  
 75/88  
 R1470



1963  
 \*F  
 Spec 76a  
 VALUE  
 OMITTED  
 R150

\*F  
 Major Shift Of Value To The Right.  
 Only One Sheet Exists. ??



Top Marginal Pair Showing Missing  
 Perforation Hole On Each Stamp.  
 \*F DM 775 K1400 EA





1929  
SF  
SPECIMEN  
SET  
Succ 1/45  
R4000



1929  
10'  
COUNTRY  
PROOF  
Succ 1/4  
R2500

SX  
Succ B3  
R360+



1929  
10'  
SET 4  
Succ 2/10  
R190



1929  
SX/VF  
SET 4  
R690  
Succ 1/4



1963  
10'  
CTO  
Succ  
5/10  
R1310



1963  
SET 6  
SQ  
DS/10  
R135