

DID YOU BELIEVE THAT IT TAKES TWO RAILS TO RUN A RAILWAY? YES? WRONG! NOT IN IRELAND! - THE LISTOWEL & BALLYBUNION RAILWAY

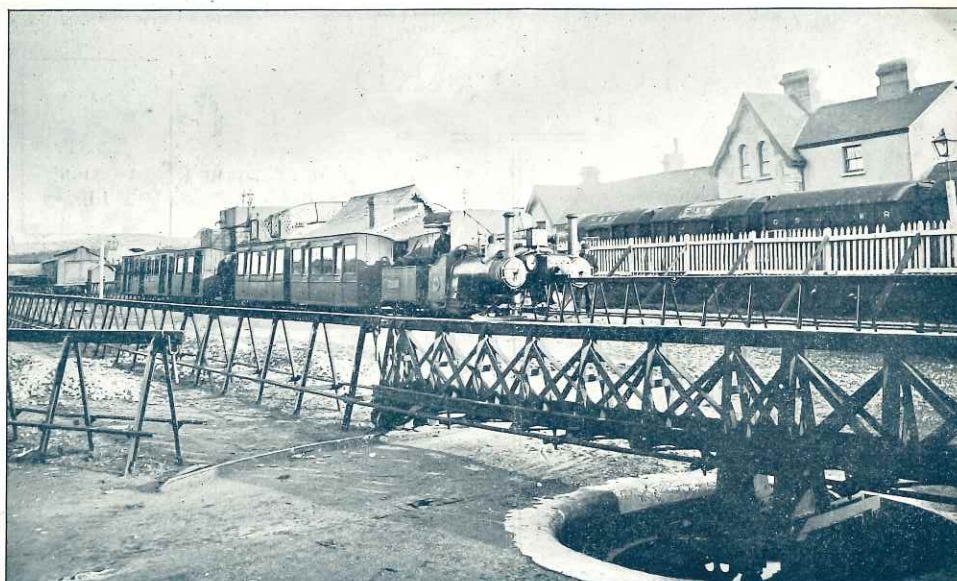
1888 - 1897

10 miles of operation, 3 locomotives, 13 passenger cars, 24 goods wagons and connecting Listowel with Ballybunion, Co. Kerry: the Listowel & Ballybunion Railway, built in 1888 to demonstrate Mr. Lartigue's system of monorail. As the single rail was raised some 3ft 6in above the ground everything was divided or duplicated and loads had to be balanced on each side of the rail. It was not easy to find out about the advantages of that Lartigue Monorail system, and the Listowel & Ballybunion Railway went into receivership in 1897.

POST

FOR INLAND POSTAGE ONLY THIS SPACE MAY BE USED FOR COMMUNICATION.

*This is the only
Railway of its kind
in the United
Kingdom. I think
there is the only
Engine on a single
rail.
Nileta N.I.S.T.
14.9.04*



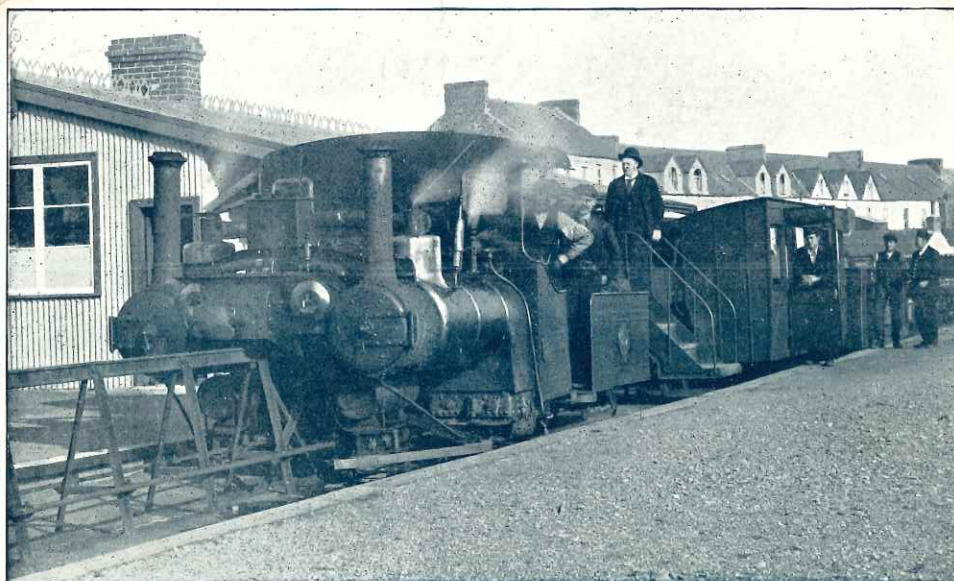
M'Carthy, Photo, Tralee

The Lartigue Railway, Listowel

POST

FOR INLAND POSTAGE ONLY THIS SPACE MAY BE USED FOR COMMUNICATION.

*Another photo
of "Lartigue"
The man standing
by engine (Klein &
the driver & fire man)
is the "Manager" (a
great ally of mine!)
Nileta
14.9.04 N.I.S.T.*



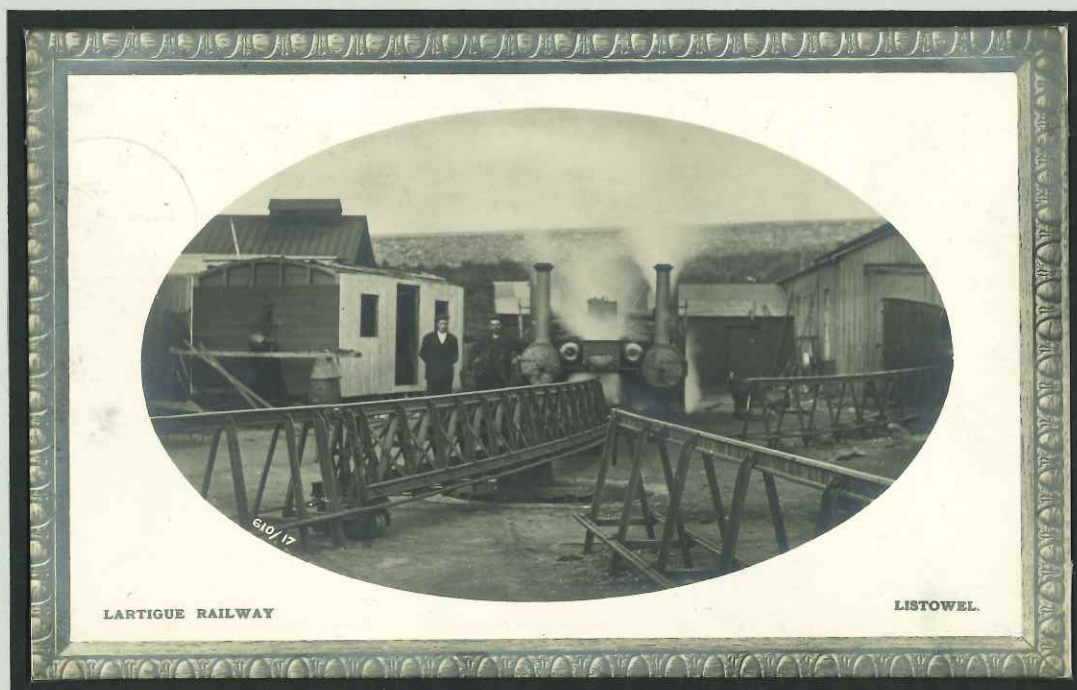
Lartigue Railway, Ballybunion

Local real photo cards by McCarthy of Tralee,
both posted in Listowel on September 14, 1904, to Devon.

**DID YOU BELIEVE THAT IT TAKES TWO RAILS TO RUN A RAILWAY? - YES?
WRONG! NOT IN IRELAND!
THE LISTOWEL & BALLYBUNION RAILWAY**

1888 - 1897

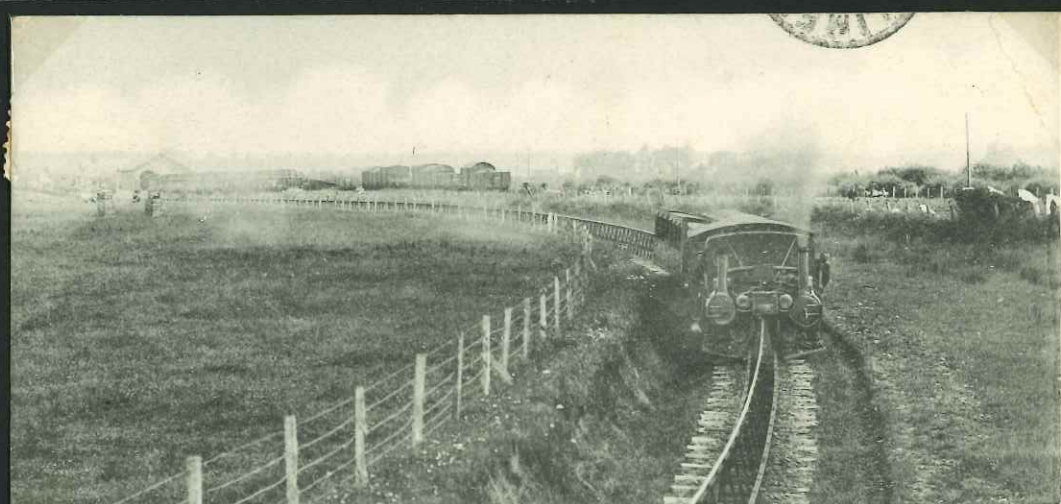
10 miles in operation, 3 locomotives, 13 passenger cars, 24 goods wagons, connecting Listowel with Ballybunion, Co. Kerry: the Listowel & Ballybunion Railway, built in 1888 to demonstrate Mr. Lartigue's system of monorail. As the single rail was raised some 3ft 6in above the ground everything was divided or duplicated and loads had to be balanced on each side of the rail. It was not easy to find out about the advantages of that Lartigue Monorail system, and the Listowel & Ballybunion Railway went into receivership in 1897.



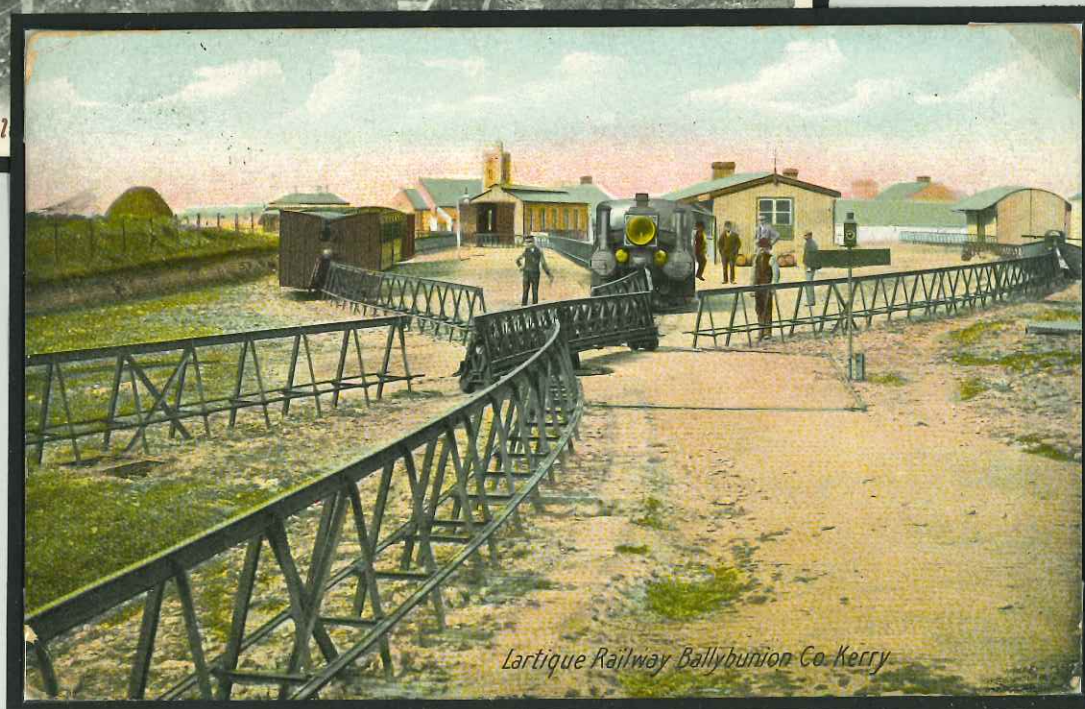
**DID YOU BELIEVE THAT IT TAKES TWO RAILS TO RUN A RAILWAY? - YES?
WRONG! NOT IN IRELAND!**

THE LISTOWEL & BALLYBUNION RAILWAY 1888 - 1897

10 miles in operation, 3 locomotives, 13 passenger cars, 24 goods wagons, connecting Listowel with Ballybunion, Co. Kerry: the Listowel & Ballybunion Railway, built in 1888 to demonstrate Mr. Lartigue's system of monorail. As the single rail was raised some 3ft 6in above the ground everything was divided or duplicated and loads had to be balanced on each side of the rail.



It was not easy to find out about the advantages of that Lartigue Monorail system, and the Listowel & Ballybunion Railway went into receivership in 1897.



**DID YOU BELIEVE THAT IT TAKES TWO RAILS TO RUN A RAILWAY? - YES?
WRONG! NOT IN IRELAND!**

THE LISTOWEL & BALLYBUNION RAILWAY 1888 - 1897

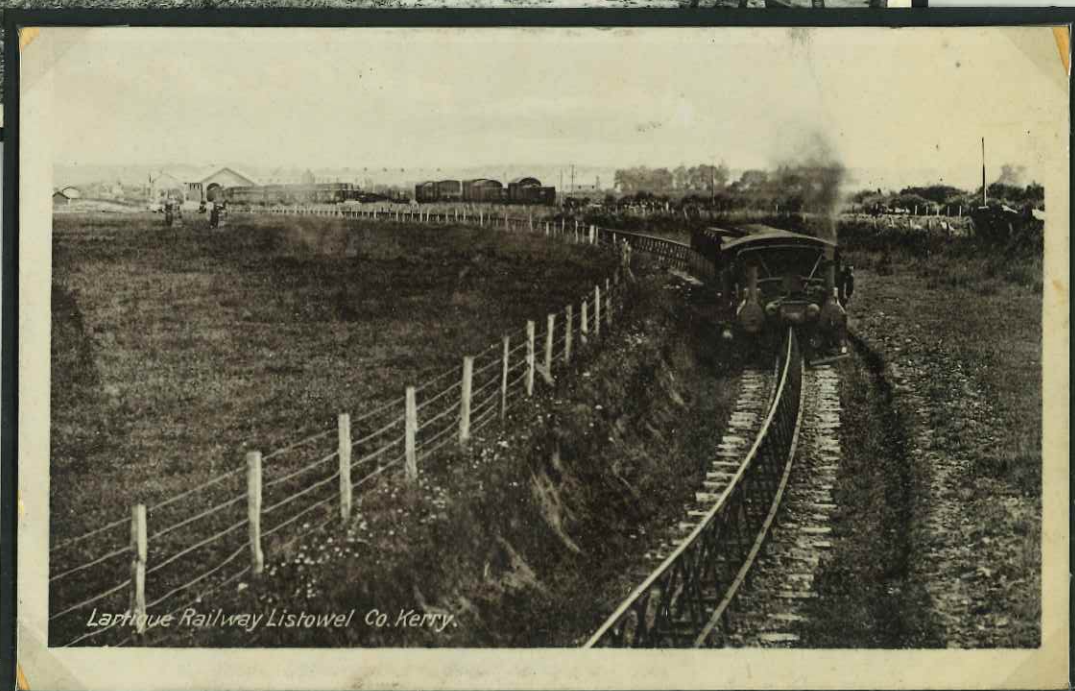
10 miles in operation, 3 locomotives, 13 passenger cars, 24 goods wagons, connecting Listowel with Ballybunion, Co. Kerry: the Listowel & Ballybunion Railway, built in 1888 to demonstrate Mr. Lartigue's system of monorail. As the single rail was raised some 3ft 6in above the ground everything was divided or duplicated and loads had to be balanced on each side of the rail.



Lartigue Railway, Ballybunion, Co. Kerry



It was not easy to find out about the advantages of that Lartigue Monorail system, and the Listowel & Ballybunion Railway went into receivership in 1897.



Lartigue Railway Listowel Co. Kerry.

**DID YOU BELIEVE THAT IT TAKES TWO RAILS TO RUN A RAILWAY? - YES?
WRONG! NOT IN IRELAND!**

THE LISTOWEL & BALLYBUNION RAILWAY 1888 - 1897

10 miles in operation, 3 locomotives, 13 passenger cars, 24 goods wagons, connecting Listowel with Ballybunion, Co. Kerry: the Listowel & Ballybunion Railway, built in 1888 to demonstrate Mr. Lartigue's system of monorail. As the single rail was raised some 3ft 6in above the ground everything was divided or duplicated and loads had to be balanced on each side of the rail.



Lartigue Railway Ballybunion Co. Kerry

Lartigue Railway, Ballybunion, Co. Kerry



It was not easy to find out about the advantages of that Lartigue Monorail system, and the Listowel & Ballybunion Railway went into receivership in 1897.



Lartigue Railway.

Ballybunion. Co. Kerry.