



In Nanking-Road.



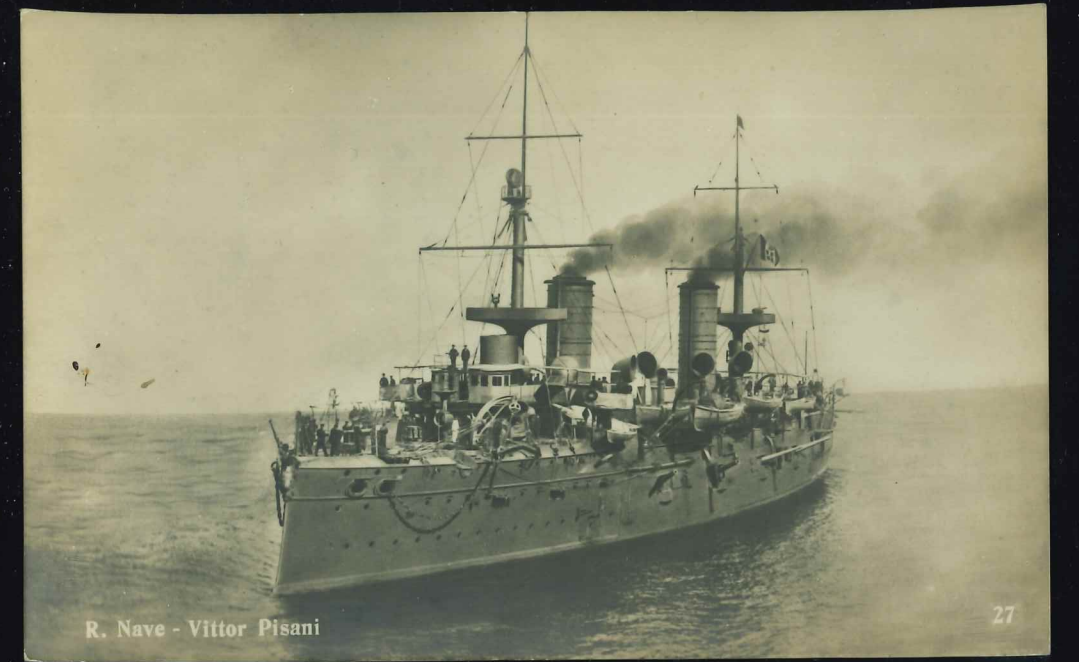
La compagnia ritorna a bordo.



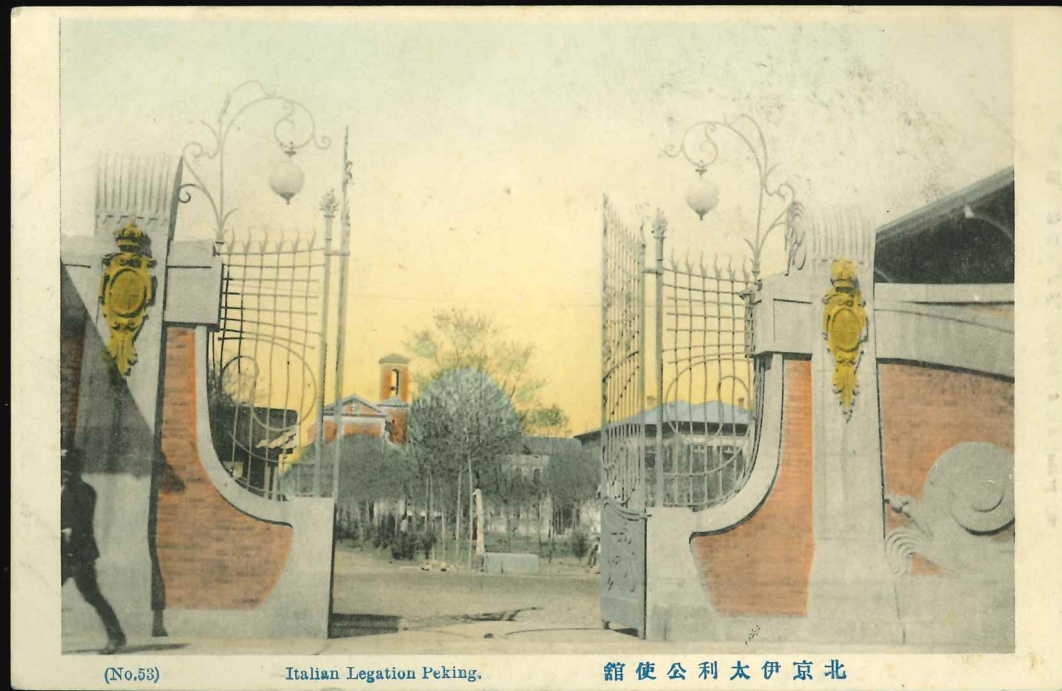
Serie I* - CINA - 20. Il Consolato italiano a Tien-sin.



Il pezzo da sbarco da 75.



R. Nave - Vittor Pisani



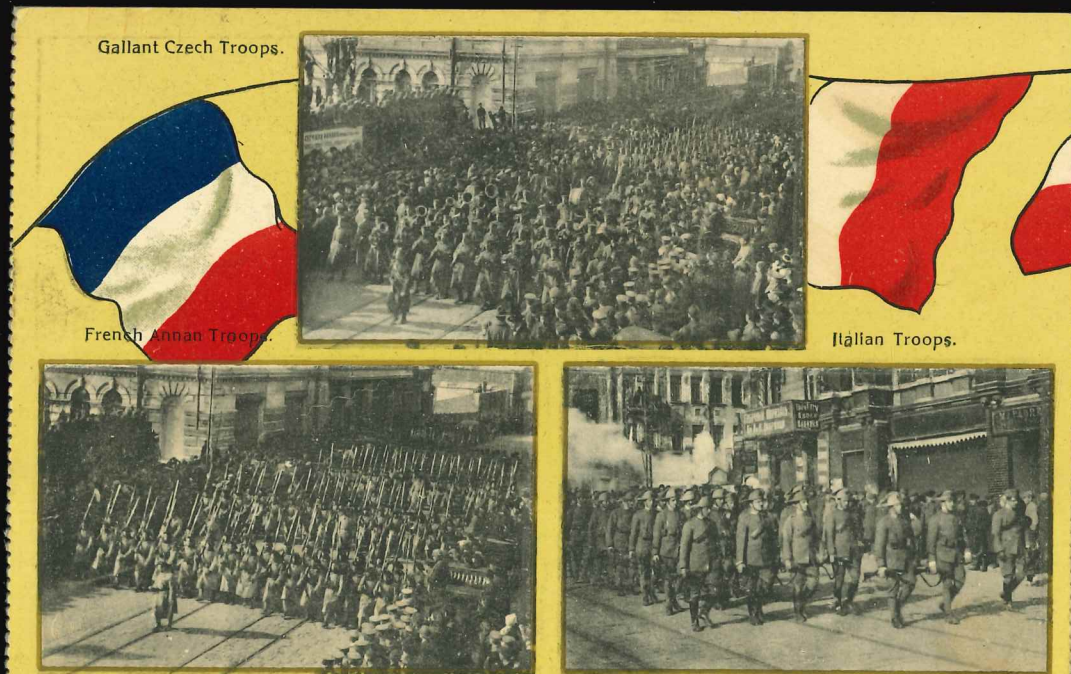
(No. 53)

Italian Legation Peking.

館使公利太伊京北



at Stan. B. P. - Maimo - November 1918.



Gallant Czech Troops.

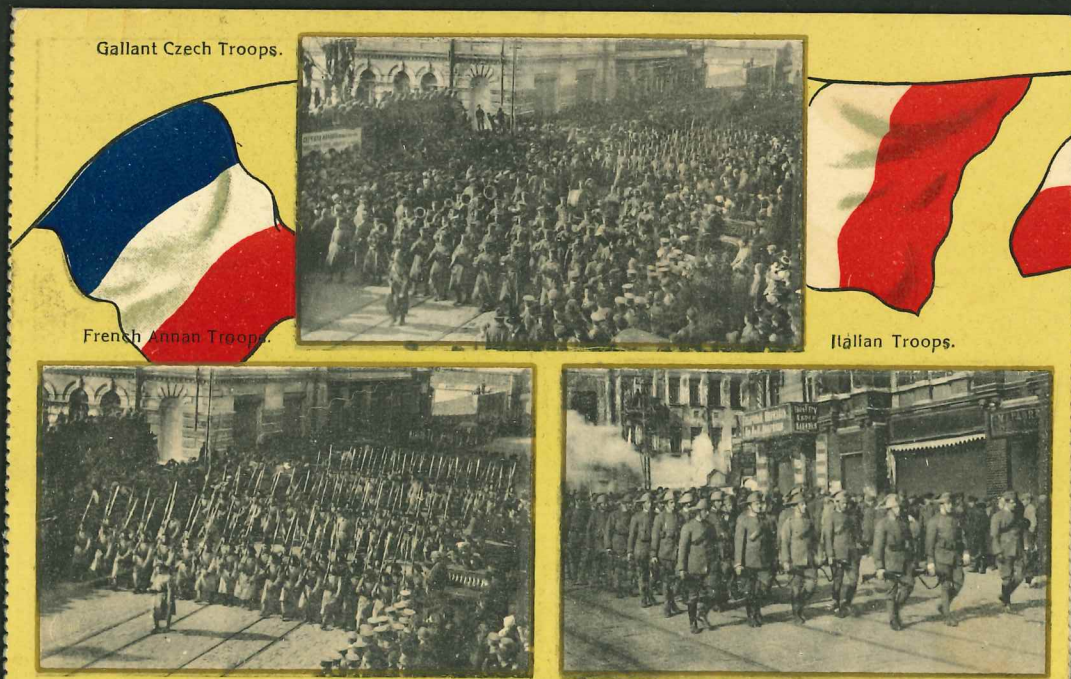
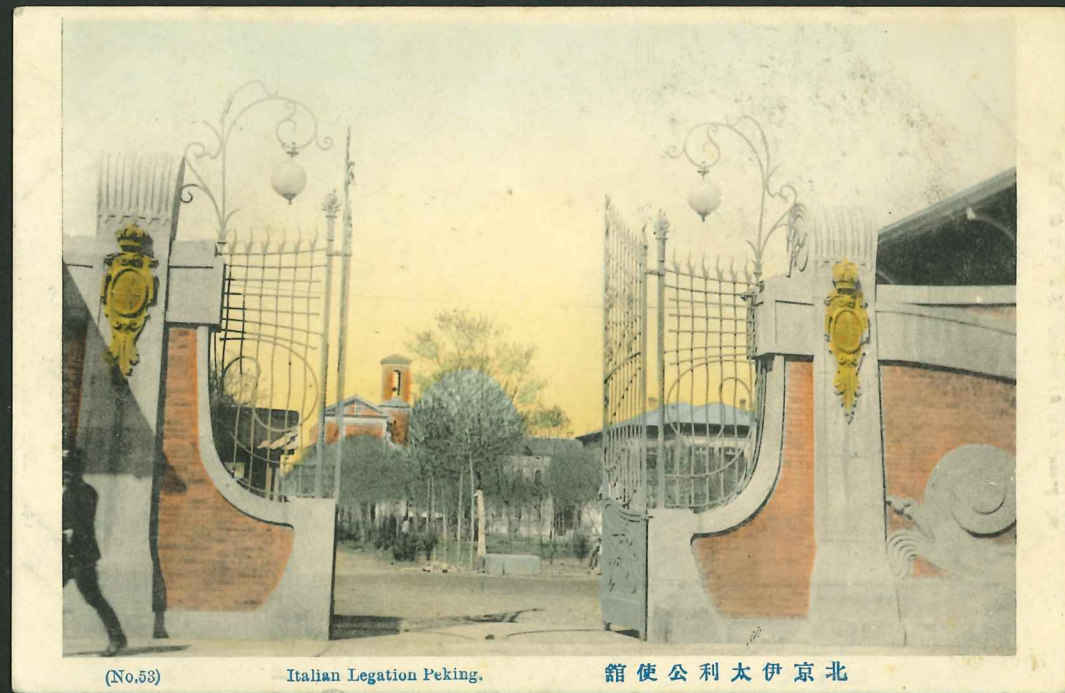
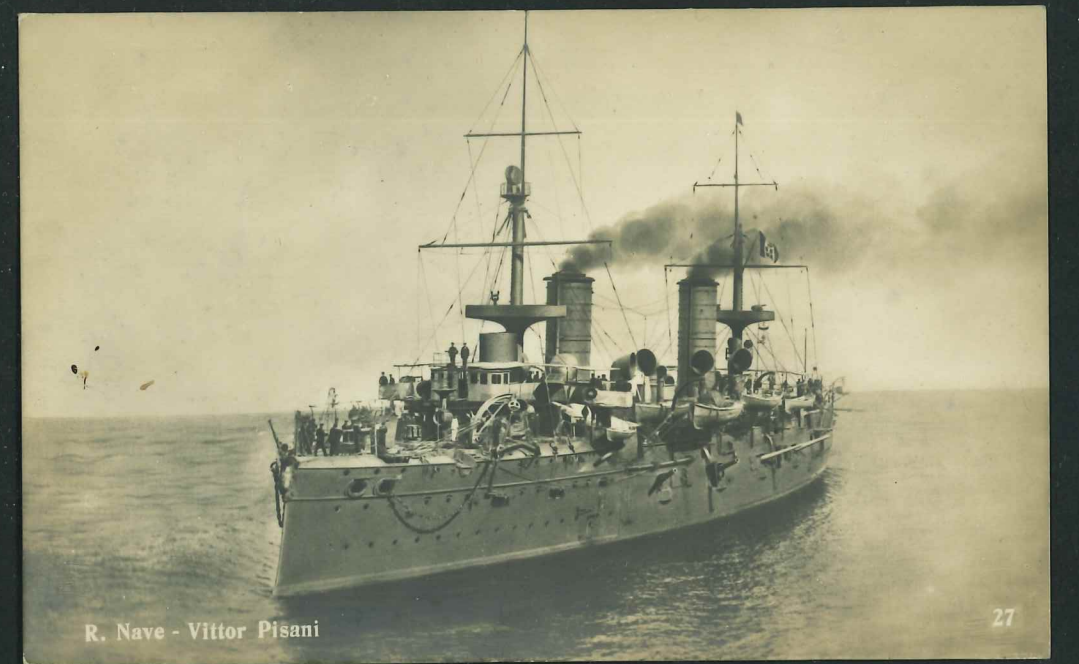
French Annam Troops.

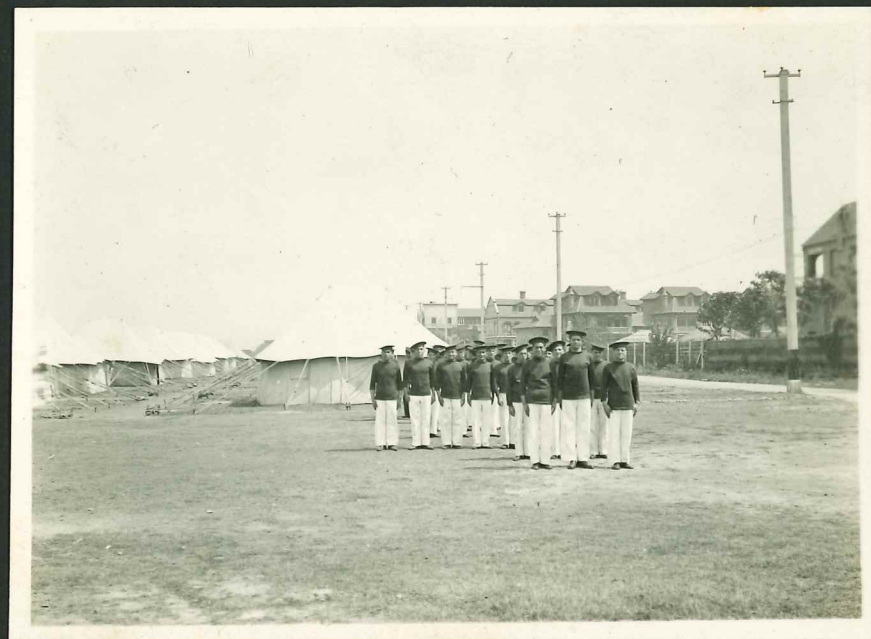
Italian Troops.



Chinese Troops.

American Troops.







SCHIZZO DIMOSTRATIVO GENERALE PER LE OPERAZIONI DEL REGIO CORPO DI SPEDIZIONE ITALIANO NELL'ESTREMO ORIENTE

