

1902. Impert.
Type-set by the Pharos Press at Teheran.



After printing, these "stamps" were delivered to the Director General of Posts, who applied a control mark which authorized their use as postage stamps.

"Stamps" without control were therefore reprints, stamps in process of manufacture, or illicitly used.

The control was applied in red, and nothing remains but a reddening of the paper if stamps are carelessly soaked off.

Prepared for use but not issued.

14688



578 ←

These 4 stamps
the reverse side
The control number
side of the sheet.
of the right hand
by the serrated
of the paper, where
were separated.

are printed on
of the paper.
is on the front
This is a part
hand, as shown
right hand edge
the two halves

Numbered and initialed
in blue on reverse

3 CHAHIS

Second printing.

15193

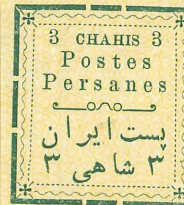
Numbered.
15193

No gum.



Tall 8 on
No. 3 on each
pane

3



5



6

Damage to
L.H. 1 on
No. 8

7



8

9



10

11



12

11

12

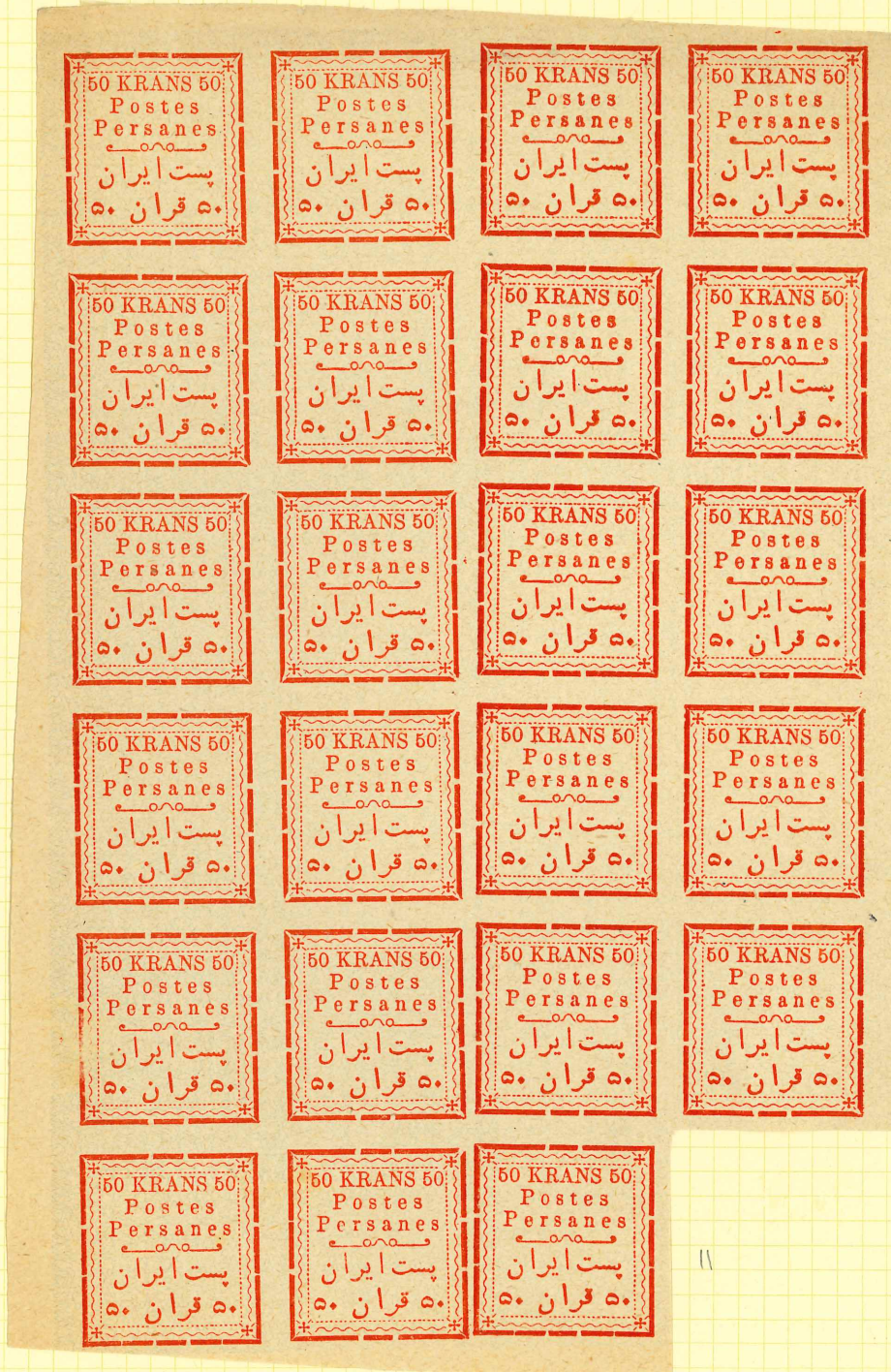
11

12

50 KRANS

Forgery.

Printed, as were the genuine, from two strikes of a cliché of 12 types, set 2 x 6.



The 4 breaks in the bottom frame line are identical on Nos. 11.

1902.

Type I "CHAHIS" GREEN.

The complete sheet showing the 12 varieties printed twice

ON THIN DULL PAPER.

SECOND PRINTING

Type d. Over-print

NOTES.



The narrow "3"

The relative positions of the "H" & t identical with the 2nd Printing of the "2 CHAHIS"

N° 1

ع ۳
شا

N° 2.

ع ۳
شا

N° 3.

ع ۳ The narrow-left "3"
شا

N° 4.

ع ۳
شا

N° 5.

ع ۳
شا

N° 6.

ع ۳
شا

N° 7.

ع ۳
شا

N° 8.

ع ۳ Broken left "۳"
شا

N° 9.

ع ۳
شا

N° 10.

ع ۳
شا

N° 11.

ع ۳
شا

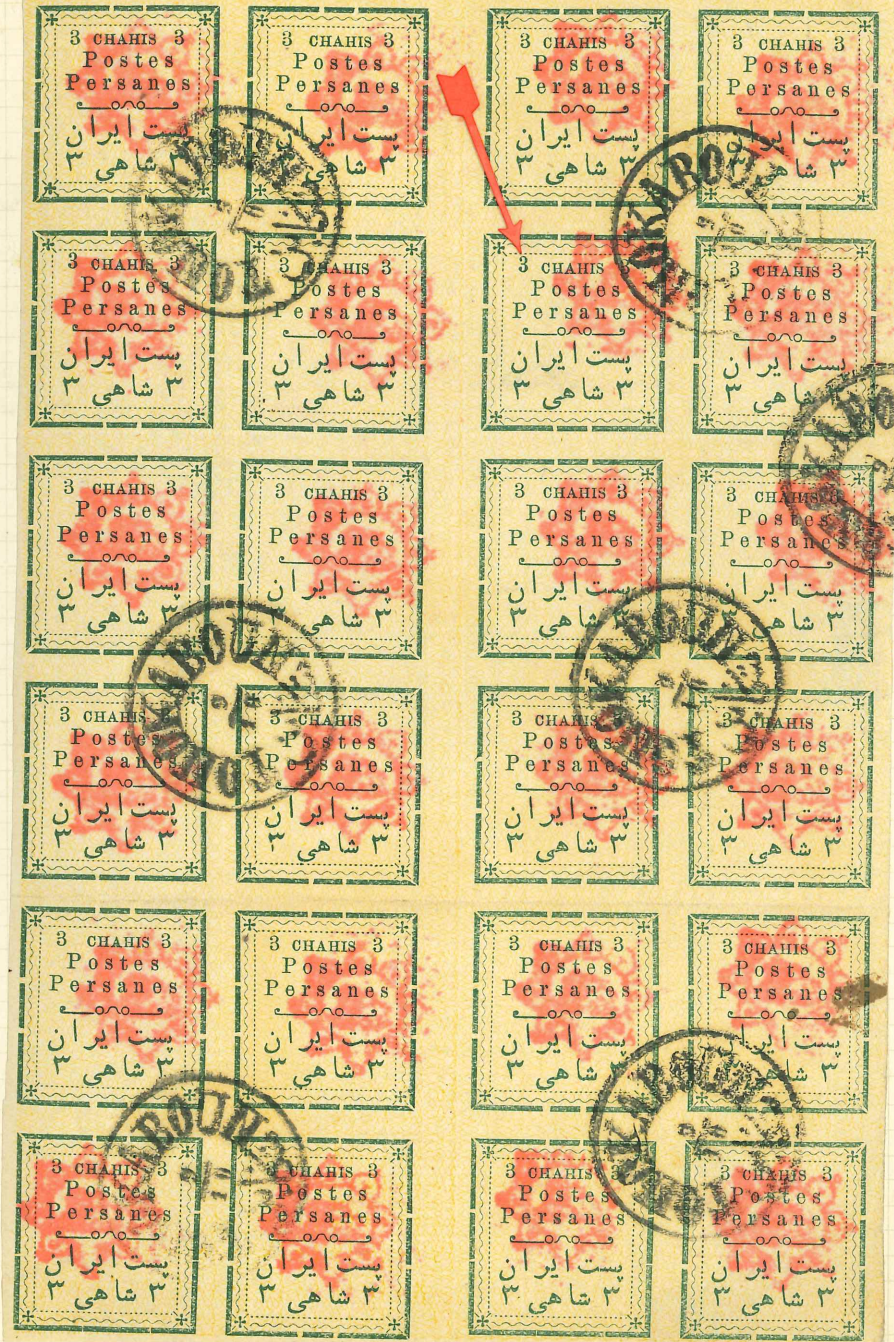
N° 12.

ع ۳ Very small break in left outside frame.
شا

With Type d. Over-print.

3 shahis
First issue
Second printing - original type b. (post mark to order)

15984



Provisional Issue (continued).
First Series.

3 Chahis.

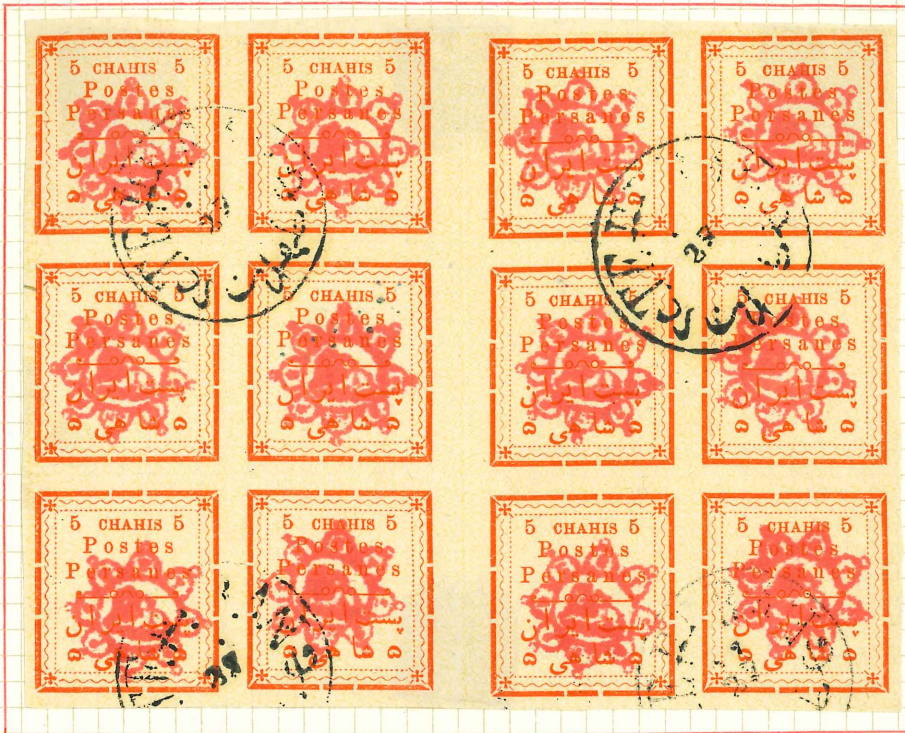
2nd. Printing.



1902.
Type 1 "CHAHIS"
5 CHAHIS.

Upper half of sheet showing the six varieties printed
twice on same sheet
ON THIN SMOOTH PAPER.

With incorrect over-print (Type d)
i.e. 19 m.m.



WITHOUT GUM.

ON THIN DULL PAPER.

With correct over-print (Type a)

WITH GUM.

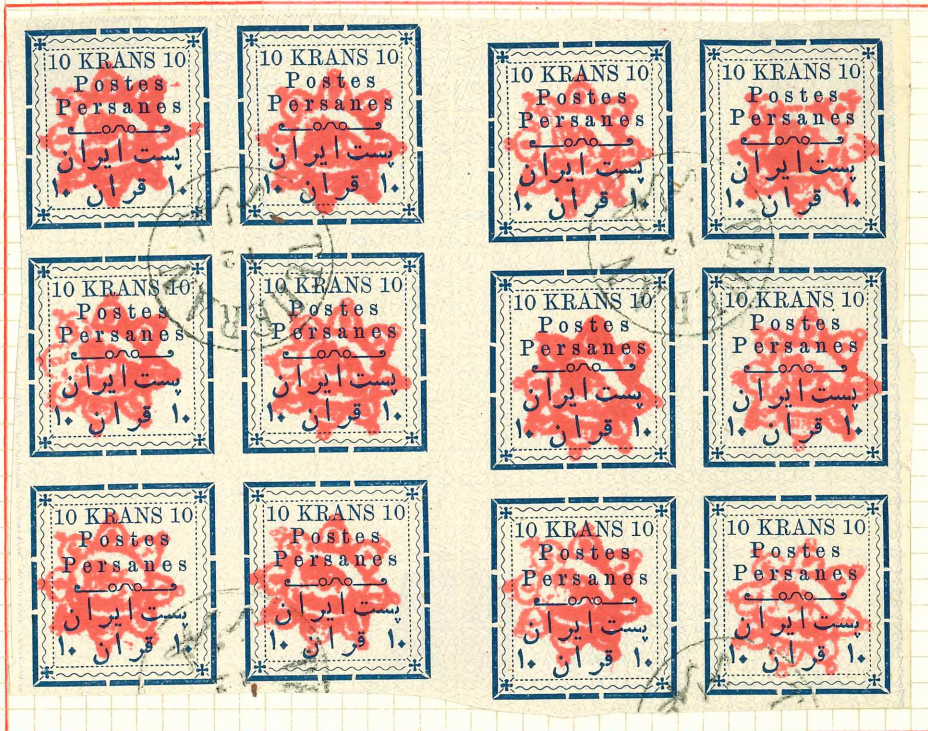
Type 1 1902 "KRANS"

10 KRANS

DEEP BLUE WITH BLUE NETWORK.

Upper half of sheet showing six varieties printed twice on same sheet.

On thin paper - Without gum.



with 2 cancel



with 2 cancel

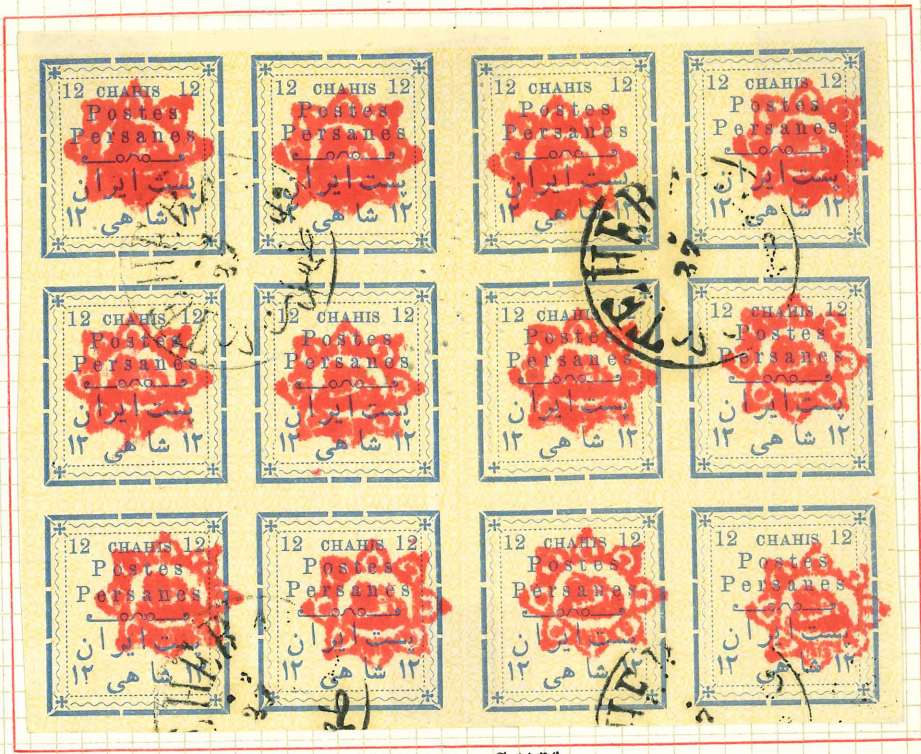
1902
Type 1 "CHAHIS"

12 CHAHIS.

ULTRAMARINE WITH YELLOW.

Upper half of sheet showing the six varieties printed twice on same sheet.

ON SMOOTH THIN PAPER - UNGUMMED.



WITHOUT GUM.

Nº 4

Nº 3

Nº 4

1 Chahi

This is a reconstructed sheet of "Printers Waste". However it shows the make-up and distinguishing differences of each stamp.



11

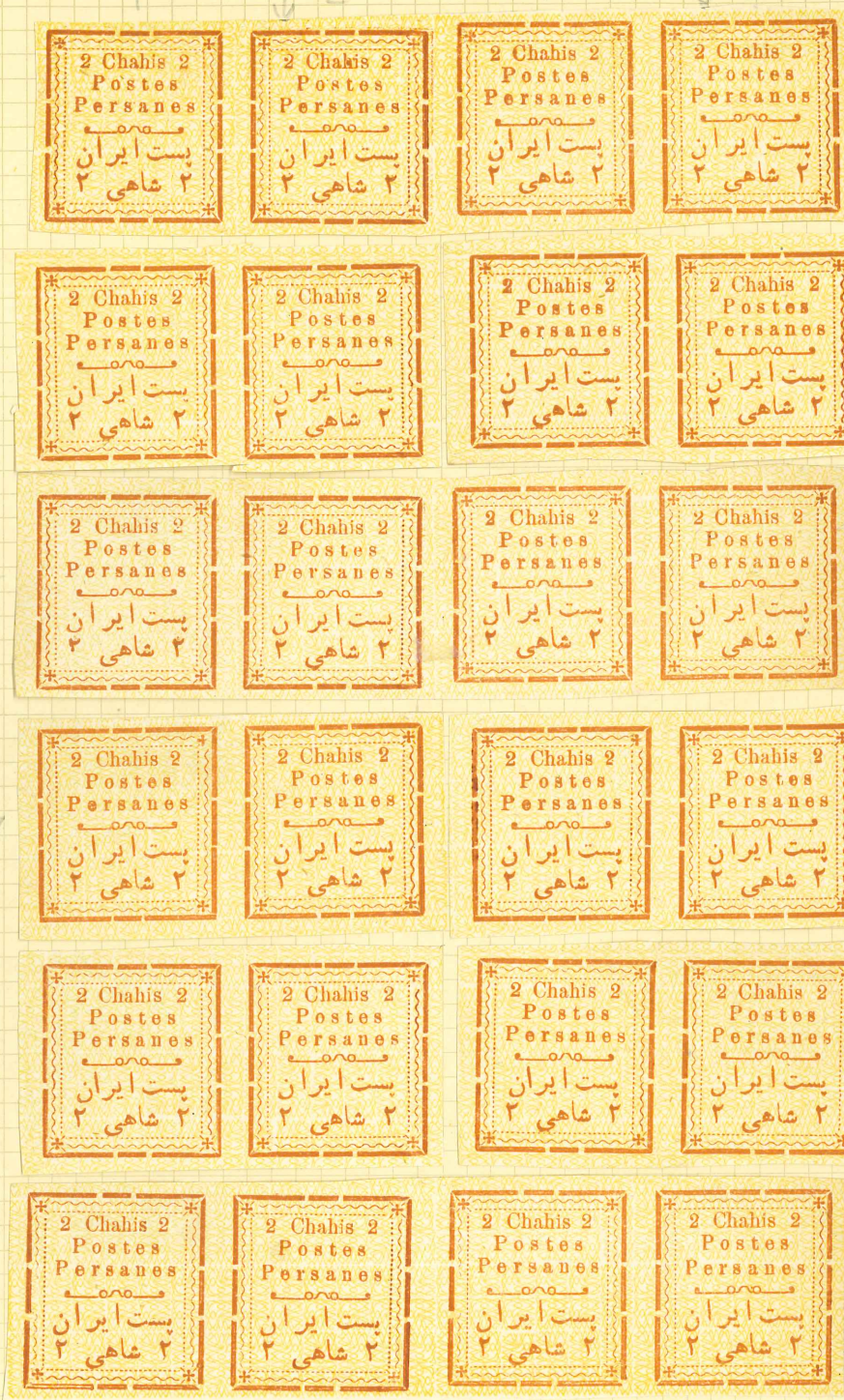
12

11

12

2 Chahis

2nd Type-set Issue - a reconstructed sheet



The bottom strip, by its differing half-sheet shades, shows that for this issue too each half-sheet was separately printed.

5 Chahis

Several printings and settings - reconstructed sheet.



No 2 has this wide gap in all settings, though it varies slightly as does the thickness of the frame lines



No 7. - no dot



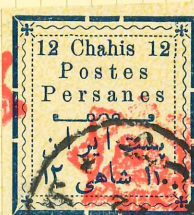
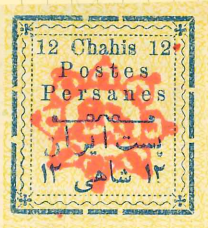
No 10 - Pop
Persanes dam-
aged. 5
abnormal on
No. 9, L.H.



12 Chahis

Part reconstructed sheet, two printings.
(i) Worn Persian inscription Re-set clear cut Persian inscription
(ii) b (ii) c

Note the broken RH?



This PM appears genuine

Note broken RH? and extra copy in RH frame

3



5



Broken 2
No 5 Tall J

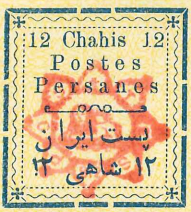
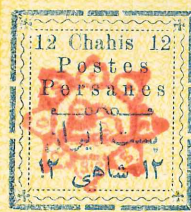
7



No 7 Tall Broken RH

9

Broken LH?



No 9 Tall J

11



12
Break in RH frame

12 Chahis

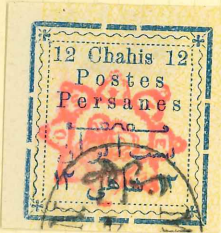
1902. Second Type-set Issue.
Two later printings or reprintings.

of 1000 pairs

Type II (b)



II (b) 12
Early State
RAM NOT broken



Reprint Type I

Reprint Type II

SOME GUM



of 1000 pairs. Sharp & clear

MINT

Type II (c)



long upright

Double Control
inserted



MINT

1902
TYPE I - "CHAHIS"
2 CHAHIS.

1ST SETTING
(2ND PRINTING)

RED-BROWN WITH YELLOW NETWORK
SECOND PRINTING.

Two impressions on the same side of one sheet.

Relative positions of the H and t

N°1
H
t

N°2
H
t

N°3
H
t

N°4
H
t

N°5
H
t

N°6
H
t

N°7
H
t

N°8
H
t

N°9
H
t

N°10
H
t

N°11
H
t

N°12
H
t

Varieties.

N°1.
Left top cross ✖

N°2.

N°3.

N°4.
Broken left ✖

N°5.

N°6.

N°7.
Right ✖ not broken.

N°8.
Three close dots under Persian character = ۰۰۰

N°9.

N°10.

N°11.
Missing lower serif to P
Broken top to شاه

N°12.

out



Note.
The first stamp bears the postmark of 1901.

↓

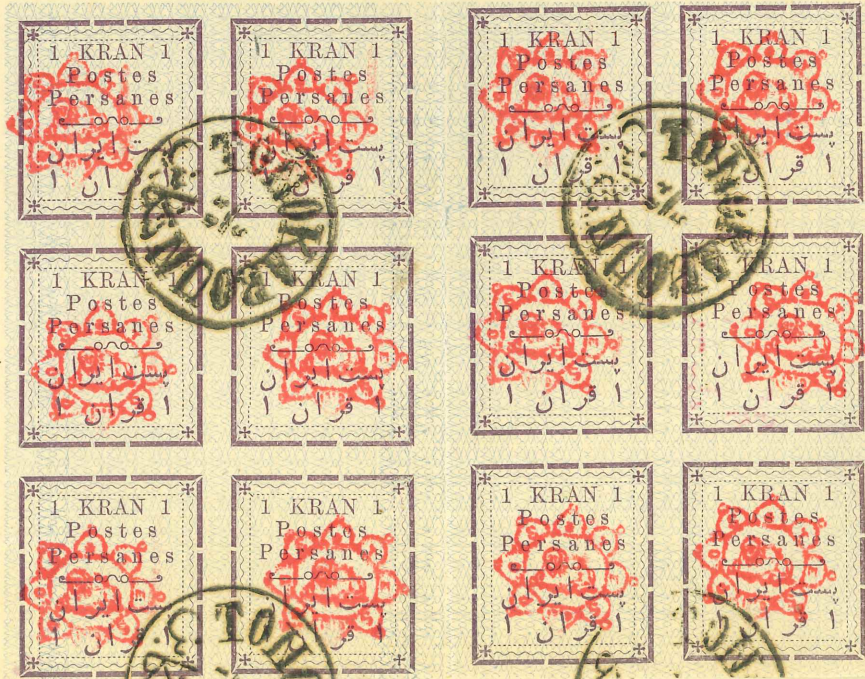
C.

Postmarks. 1

7

1 to 6.

№ 60787



Type II 1902. "Krans"

10 Krans.

Blue with blue network.

ON THIN SMOOTH PAPER.

The complete sheet showing the twelve varieties printed twice.

STAGE VII.

S.G. 335.

With Type & Control

The Notes given on the
"2 Krans" equally apply to the
"10 Krans"

inverted.

With Gum.

10



1902.

Type II "Krans"

2 Krans.

olive green with blue network

ON THIN SMOOTH PAPER

The complete sheet showing twelve varieties printed twice N°1.

STAGE VII

NOTES.

N°1. Heavy left frame line

N°2. No serif in "P" in "Postes"

N°3. Heavy "P" in "Persanes". Lower corners not angle-jointed

N°4. Lower corners not angle jointed. N.W. Corner has square end to top frame line

N°5. Heavy "P's" in "Postes" and "Persanes"

N°6.

N°7. Lower corners not angle joint. Heavy "P" in "Persanes"

N°8. The "t" under the "2". No serif to "P" in "Persanes"

N°9.

N°10. The "t" under the "2". No serif to right "2"

N°11. Dot in left frame line

N°12.



WITHOUT GUM.



with f. Control.



Heavy back ground



with f. Control (N° 11)



with f. Control (N° 2)

7.40

1902
Second Issue. "Krans"



N° 9.

on lined paper
N° 6

10

With Type f Control

1902

2nd Issue

"Krans"

STAGE VII

2 Krans

Control
Type f



03

6

193

2 Chahis
Reconstructed Sheet



These are almost certainly remainder P.M.s.

2 Chahis

A different printing or plate



PRINTED AND MADE IN ENGLAND

2 Chahis.



Type-set 1902 2nd Issue.

Stage IV.

3. Chahis

Varieties.

Tête-bêche

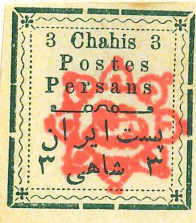
N°1
With fall "3"

N°12.

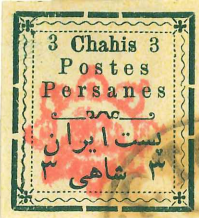


N°7 stamp.
With squarish lower frame.
(Bogus post-mark)

Unusual with gum.



N°5 Stamp.
"Persans" for "Persanes."



N°12 Stamp
With narrow "3"
(Bogus post-mark.)



N°8.
With Type f. Control.



N°9.
Without Control.

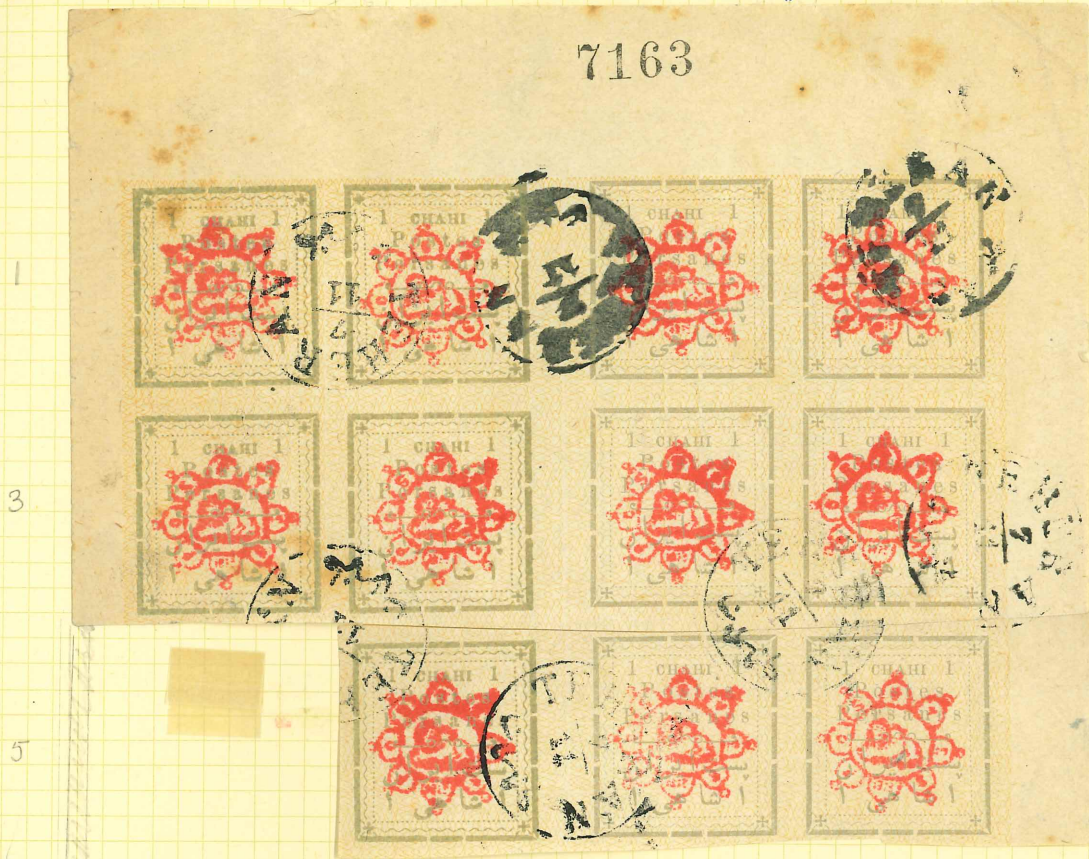
2.40

ONE CHAHI

A partly reconstructed sheet showing the two types of second-printing ONE CHAHI.

Setting B

Setting A



The B setting is always the left hand pane where it occurs.

The different placing of the word "CHAHI" on No. 1 of the left-hand and right hand panes is at once apparent.

10 Krans

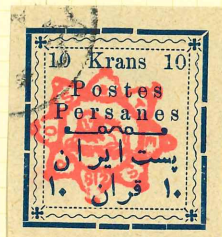
Not numbered.
No gum.

Control
812



1902.

Second Type-set Issue
The plating of the 10 Krans value



1 Kran

second setting



7

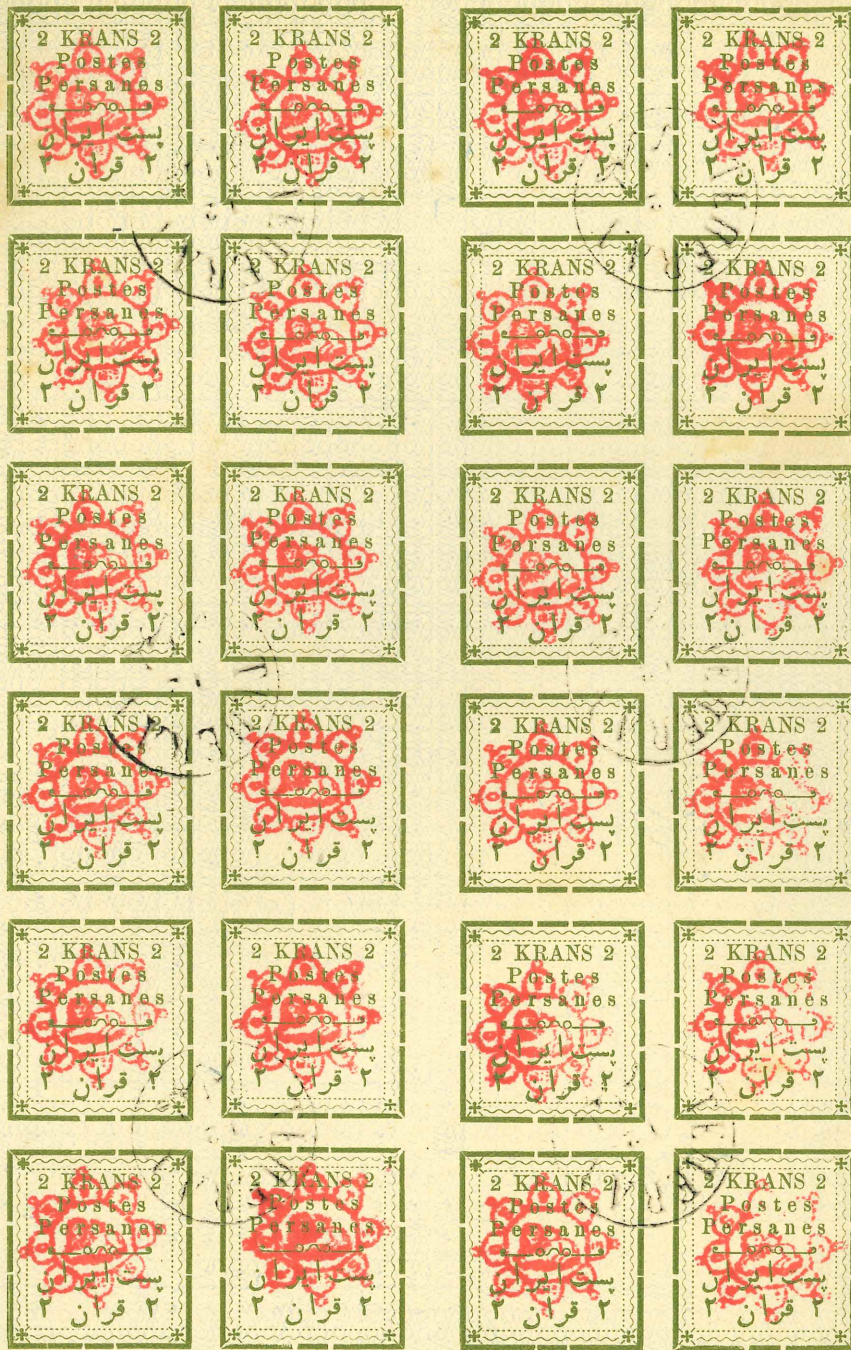
9

10



2 KRANS
Remainder sheet, with official control and
obliteration.

JA 62050



Numbered
62650.

No gum.

Control
\$12.

10607



1902

SECOND ISSUE "Chahis" ISSUE

Printed in sheets of 24 stamps using the same sets of type as in the first issue but generally re-arranged. The values were altered from:-

"CHAHIS" and "KRANS" to "Chahis" and "Krans"

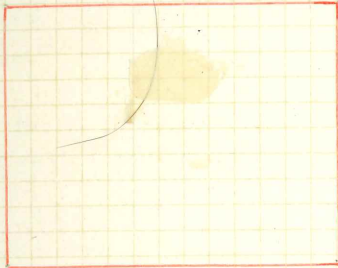
Over-printed with Type B Control - other types were printed "loobige".

The only values which have been found postally used are:-

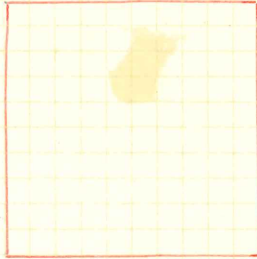
5, 10 and 12 Chahis

The whole set was printed but evidently not issued with the rose control

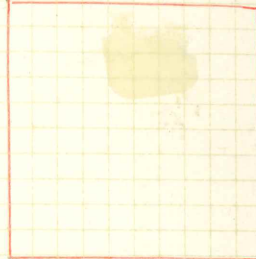
Also 1 & 2 ch
of 50 kr



N° 3.
With open N.E. corner
not in reprints



N° 8. 3



N° 12
With inverted "1" in right "12"
not in reprints.

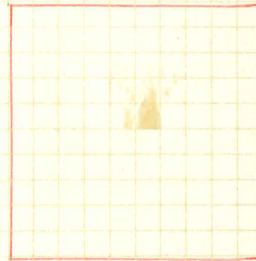
Note:- The 12ch in unused condition is exceedingly rare, the above copy is from the Farrer Collection - reprints are of course very common.



N° 3



N° 7



N° 12

1902
Second Issue - "Chahis"
10 Chahis.

STAGE III

Olive-yellow with yellow net-work.
Plated sheet showing the 12 varieties printed twice.



Controls.
All the genuine
Type "b".

N°3. Right Pane
Missing "i" in "Chahis".

6.80

N°12.
Left Postes = 11 m.m.
Right. " = 11 1/2 m.m.
Distance from "P" of Persanes
to dotted line :-
Left = 2 1/2 m.m.
Right = 1 1/2 "

1902.

1 CHAHI - GREY.

Type Set.

1st Issue "CHAHI".

2nd or Later Printing

Type B.

2

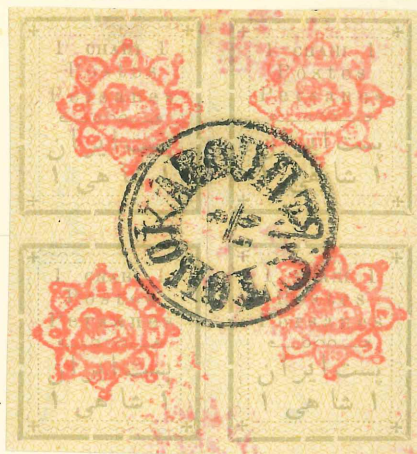


3-4

3

5-6

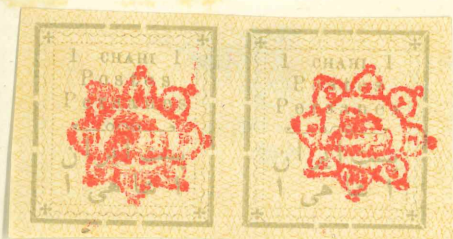
5



8

9

10



11

105

1902

Type I. "CHAHI"

Complete re-constructed sheet - twelve varieties

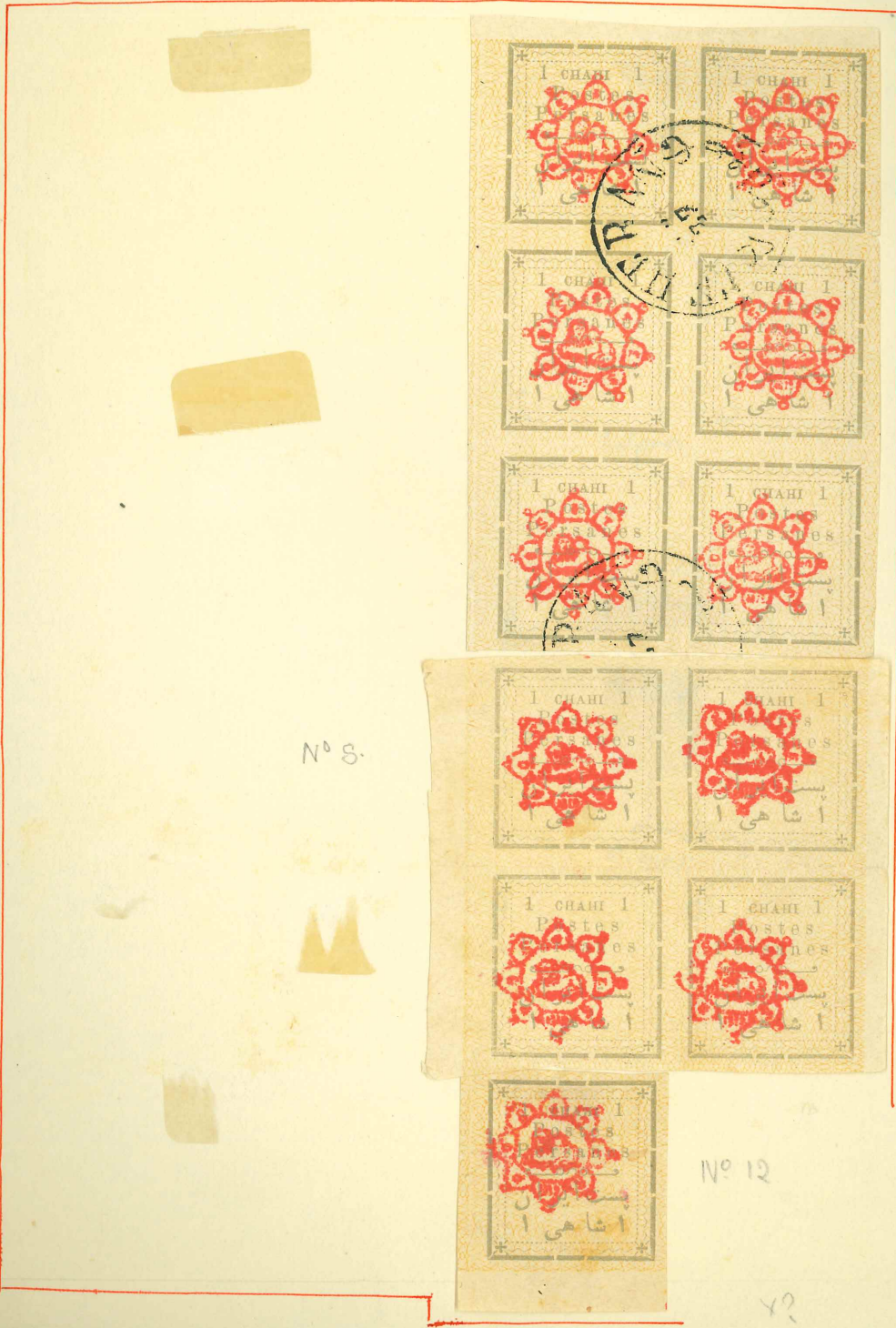
SECOND PRINTING.

Showing the error "P" for "I" in N°4 stamp
corrected in the right-hand side

TYPE "A"

(Printed on both sides)
2Like

pages



N° 8.

N° 12

42

COMPLETE SHEET

2 VERTICAL PANES OF 12 STAMFS

9911



1902.

5 CHAHI - First Issue
Varieties.

Without overprint Control.
(Some of these have been washed off)



N°10. 2nd Printing

N°9. 1st Printing
Printed on both sides.

(N°3) 2nd Printing
(Post mark Borazdjoon)

(N°4)



N°4. 2nd Printing
Showing traces of Over-print

2nd Printing



N°1



N°5.



N°3.



N°6.

Type of overprint (N°4)

With back-ground.
omitted

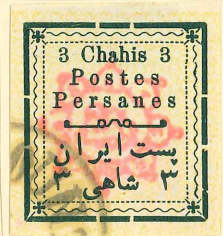
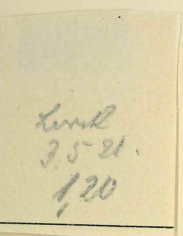
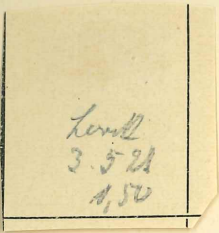
N°7
N°2

N°1

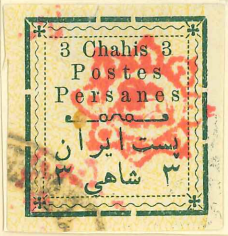
Persien.

1902.
Ansch. für 2 Ch. Type et.

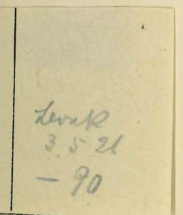
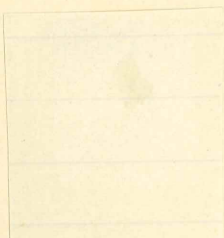
Type B.



Linnell auf 3x



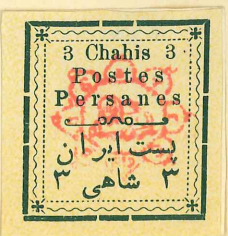
links groß 3.



Chahis ohne i

links 5 groß

links 3 groß.

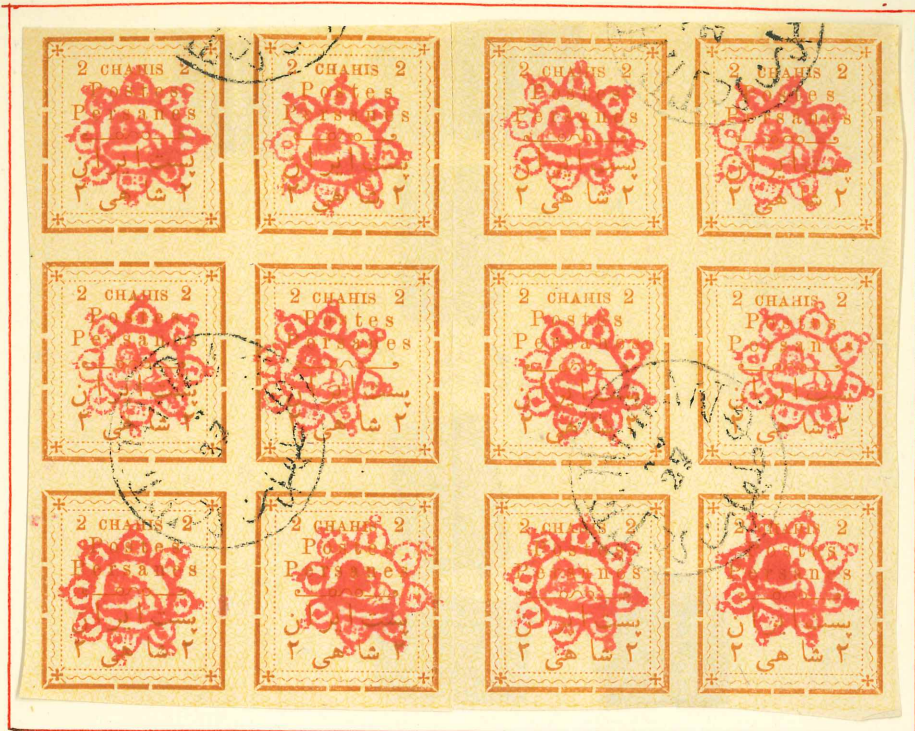


Doppeldruck

1902

2 CHAHIS. RED.
Type Set.

1st Issue or "CHAHIS"
2nd or Later Printing.



has repaired →

Lower half of complete sheet.
On thin unground paper.
Type d - overprint i.e. 19 mm.



light shade

No 4 1st
Dark shade

No 3 1st
Dark shade

10 mm
Heavy gum

Type 2
in remainder



Showing signs of roulette.



No 9

2nd Printing

No 10

Showing signs of roulette.

TYPE "C" CONTROLS

RED

5



minted



double



9



11

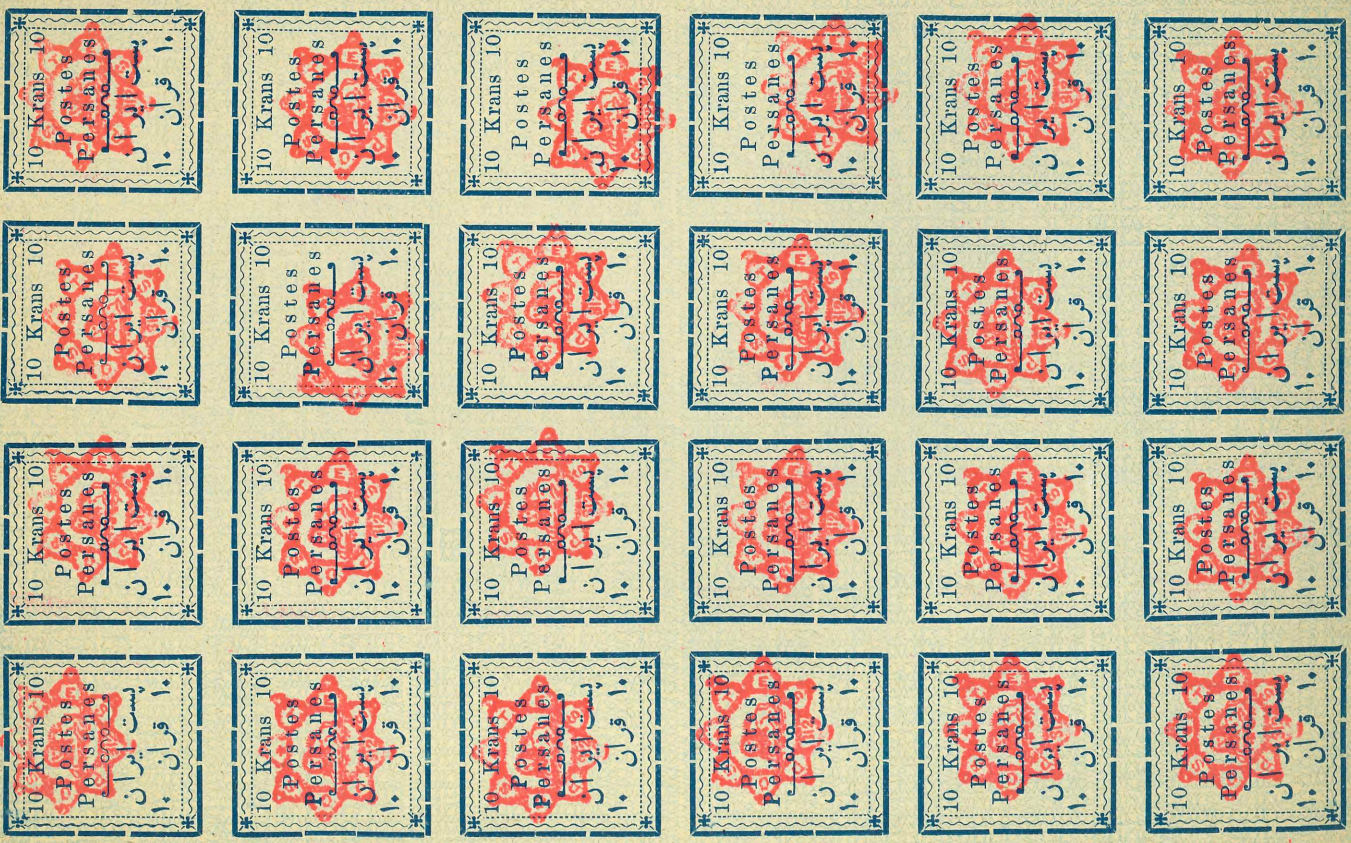
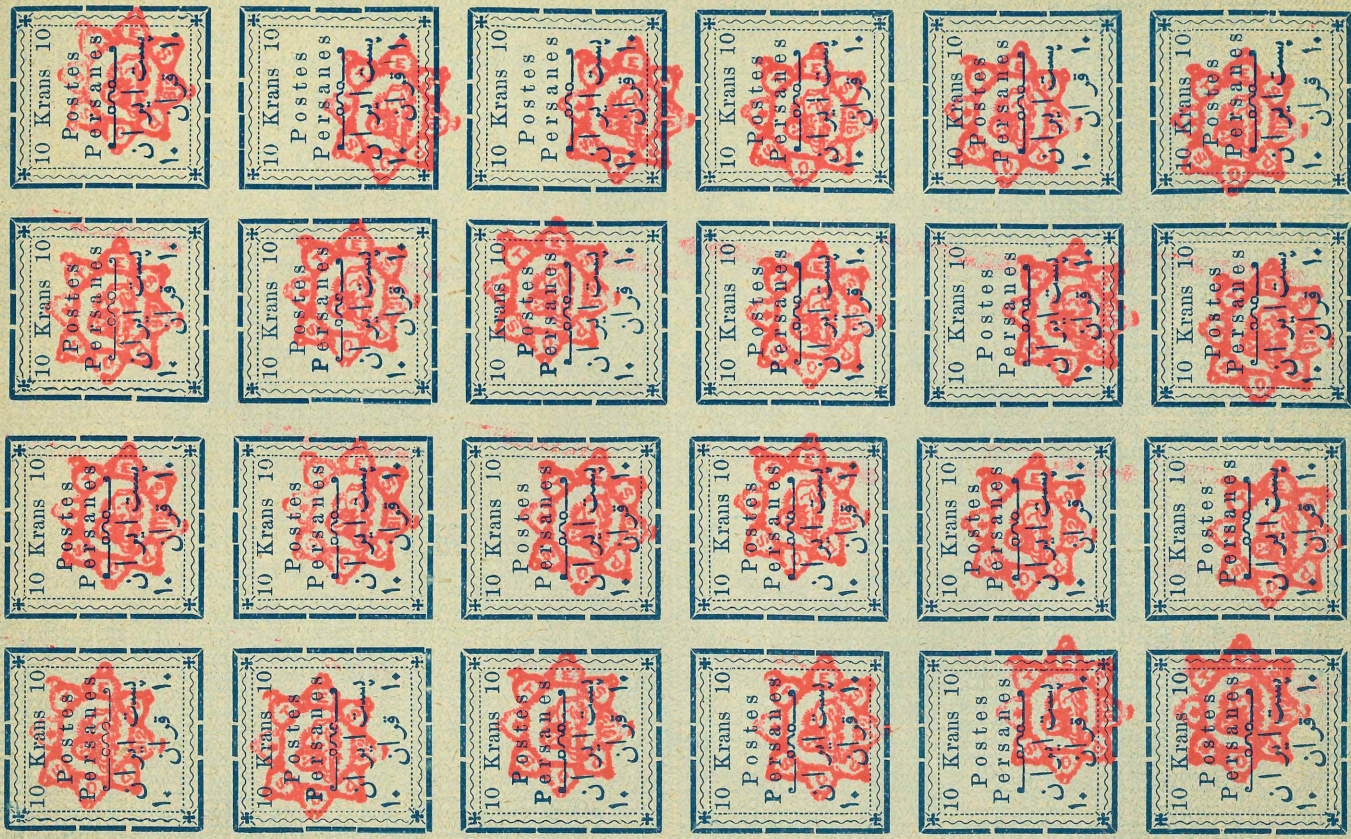
minted



5 Ia 6

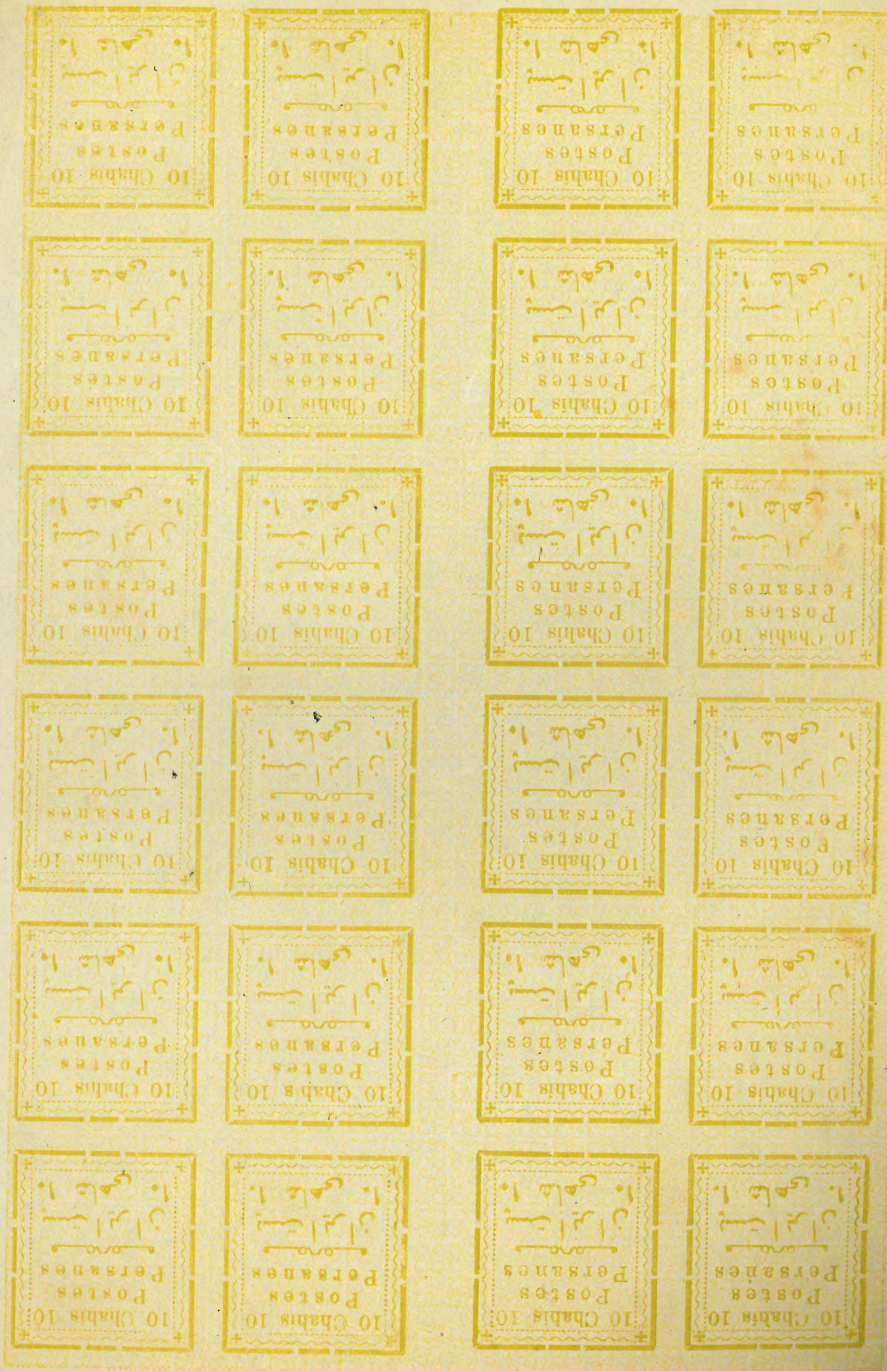


double





33185



all F.



o/f

5 Chahis.
1st. Printing.



*Cross missing
in NW corner*

Provisional Issue (continued).

First Series.

2 Chahis.

2nd. Printing.



5 Chahis.
2nd. Printing.



S.G. 322



1902.

Second Type-Set Issue
Value in "Chahis" or "Krans".

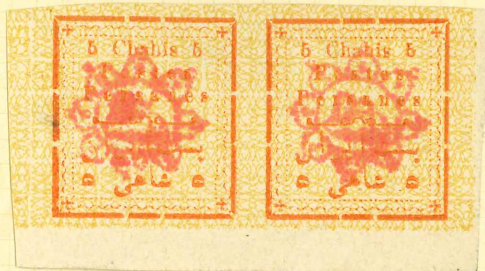


GUM-MINT

11

12

12



GUM-MINT

Varieties of the 5 Chahis



20)

20)

Postmark

Tall 5

9

10)

10



Tall 5

Damaged corners

Flaw

Not gummed, presumably a remnant of

3

3

Open corner

Normal gap

But only line NOT damaged



6, 10)

damaged cross

These varieties could be late printings, damaged plate

3 CHAHIS - First Issue.
Varieties.

Dark shade
N°4. 1st Printing

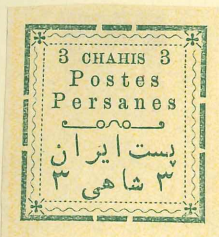
Télé. beché

N°7

N°5

With Type d. Control. - Printers waste

With Control missing



(N°1)



(N°5)

Printer's waste



N°4 1st Printing



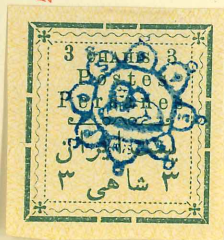
N°6



N°8

2nd Printing

With narrow "3"



With Control Typed
(Made for Collectors)



(N°3)

With Control Type d

(N°4)

1902

VARIETIES
WITH BLUE O'PRINT.



WITHOUT O'PRINT



S. C. PETERSON, INC. 3099 MADISON AVENUE, NEW YORK, N. Y.

5 Chahis.
Plating of the First Setting

GUM-MINT



GUM-MINT



←

←

← Damage

6

1902.

Second Type-set Issue.
A reprinting of the 5 chahis



Break in early line

From L.H. pane
Normal 5 and L.H.
upper cross missing

Rays of Cross
Top R. missing P of Persanes is damaged.

Both these printings appear to have been postally used.

Provisional Issue (continued).
First Series.

2 krans.

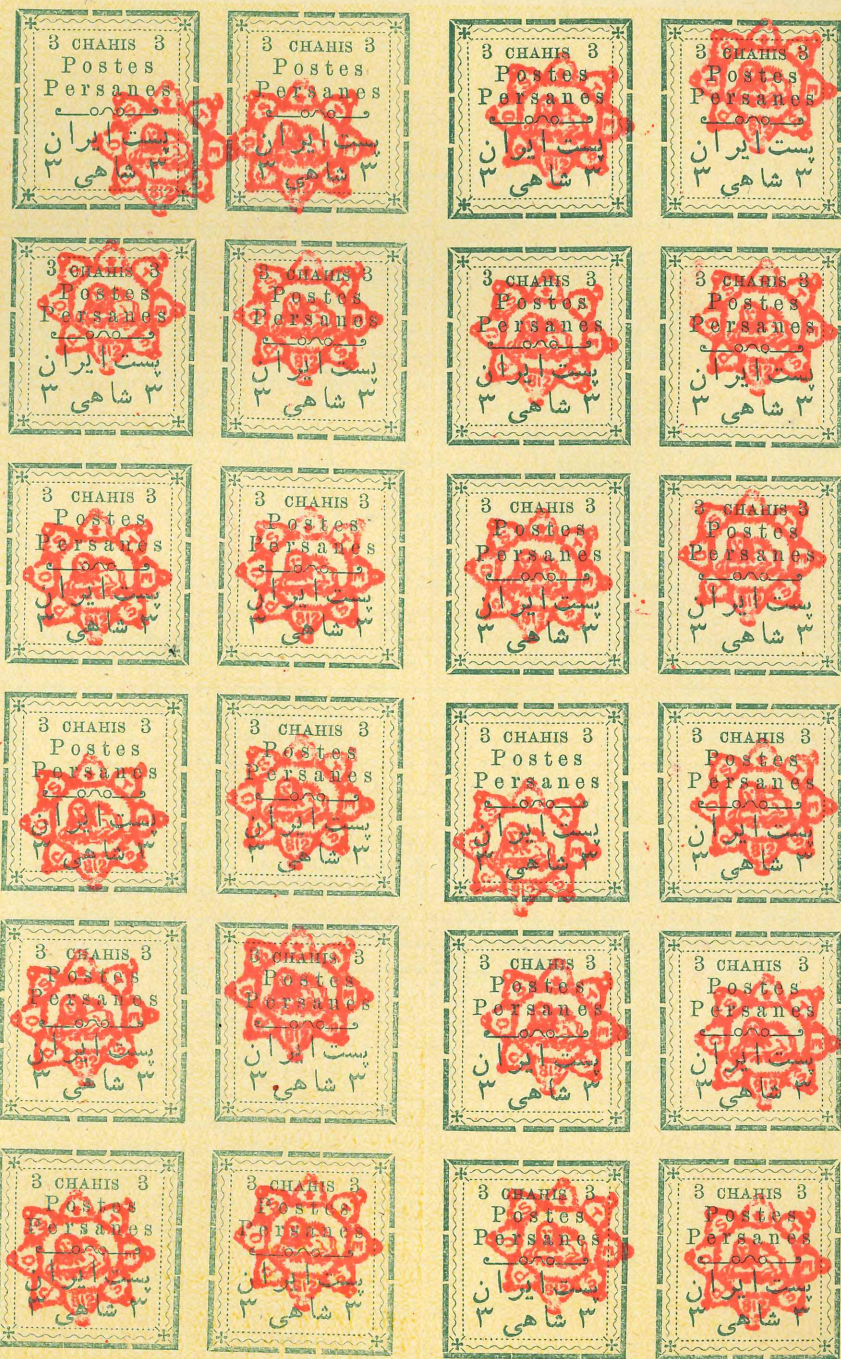






First Issue, Second printing original type (?) paper

17446

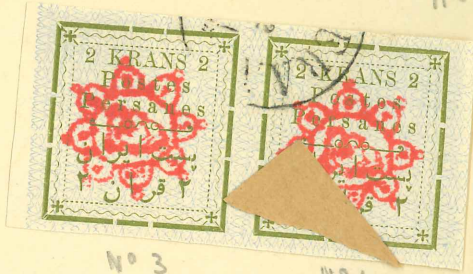




1902

1st Issue Typo. Set.
2 KRANS

W. Remondet
Reprints on thin paper - unsummed.
With incorrect Control-Type et



No 3

No 4

No 7

No 9

No 11



No 8

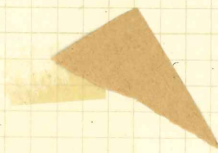
No 10

No 12



WATFORD 1356.
TELE

1902.



SMALL X

DOUBLE SURCHARGE ON BACK, FAULTY X

TALLER NARROWER FIGURE IN LEFT CORNER

WITHOUT CROSS

LOW



FAULTY X

SS. 334 A

SS. 334 B



7

1902.

Type 1. "KLAN"

1 KLAN.

Upper half of sheet showing the six varieties printed twice on same sheet.

ON THIN SMOOTH PAPER.



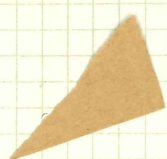
WITHOUT GUM.



For Collectors

1902

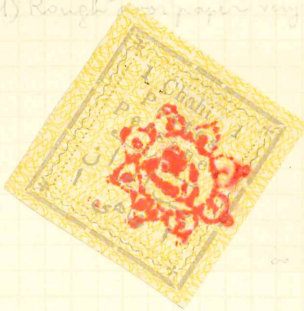
(Date)



1902 - TEHERAN

B) Value in Small letters

- 2) 1 1/2 Setting: Frame cut diagonally at angles; Small P.
- 1) Rough paper very thin



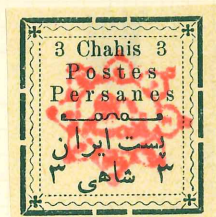
3) Tall Narrow Numerals at 6/8



"PEERLESS" SERIES

PRINTED AND MADE IN ENGLAND.

6) 2nd Setting: large P.
of Rough paper



2) Smooth Paper



3) Tall Narrow Numerals at left



"PEERLESS" SERIES

PRINTED AND MADE IN ENGLAND

chahis provisoires. L'un dans un cercle orné en surcharge rouge. Fond burelé distré.

<p>147</p> <p>1 c. gris.</p>			<p>150</p> <p>5 c. rouge.</p>	<p>151</p> <p>10 c. jaune-olive.</p>	<p>152</p> <p>12 c. bleu.</p>
------------------------------	--	--	-------------------------------	--------------------------------------	-------------------------------

Fond burelé bleu.

Surchargé.

<p>153</p> <p>1 kr. violet.</p>	<p>154</p> <p>2 kr. vert-olive.</p>	<p>155</p> <p>10 kr. bleu.</p>	<p>156</p> <p>50 kr. rouge.</p>
---------------------------------	-------------------------------------	--------------------------------	---------------------------------



Chahis au lieu de CHAHIS.



Krans au lieu de KRANS.

Surchargés.

			<p>167</p> <p>50 kr. rouge.</p>		<p>168 a</p> <p>5 kr. s. 50 kr. rouge.</p>
--	--	--	---------------------------------	--	--

Erreur (chiffres persans du 2 chahis).

Erreur (Postes persans).

<p>147 a</p> <p>1 c. gris.</p>

<p>160 a</p> <p>3 c. vert foncé.</p>

1902 TEHERAN

A) Value in Capital Letters
 Lion Dye in Red (7 hand stamp, 4 different)
 Setting: Small P in Post Iran Rough near paper

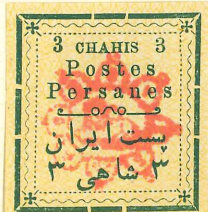


2 diff settings
 but thin chiral
 and also P in Post Iran
 but P are different

2) Small Superf Paper



3) Tall Numerals at left

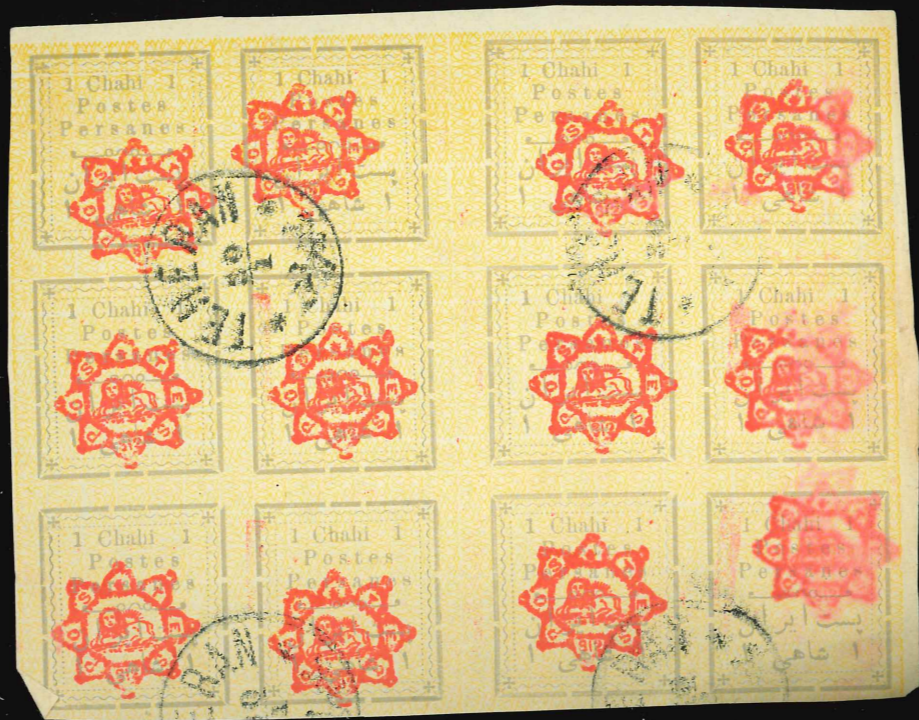


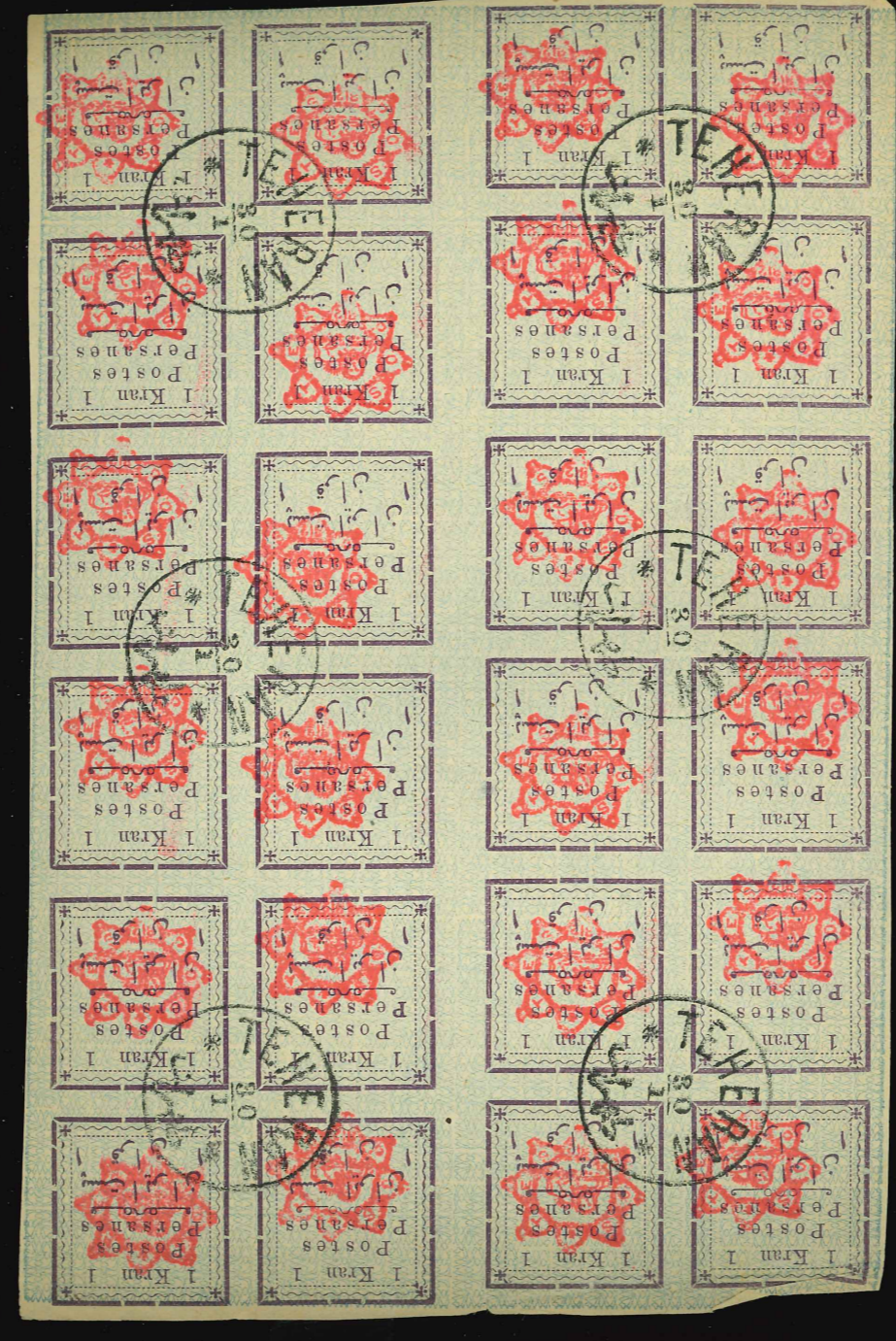
Provisional Issue (continued).
Second Series.

12 Chahis.

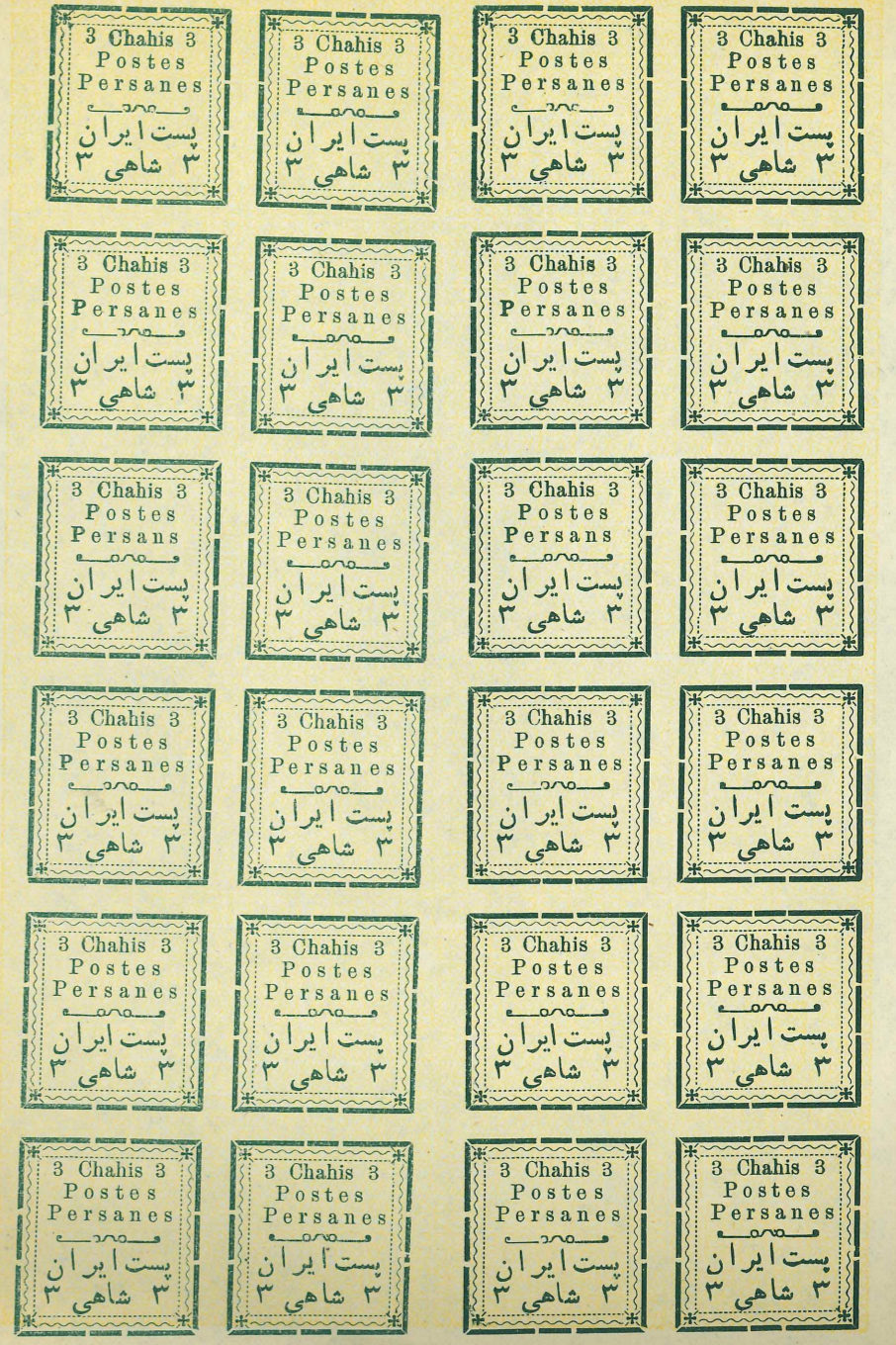
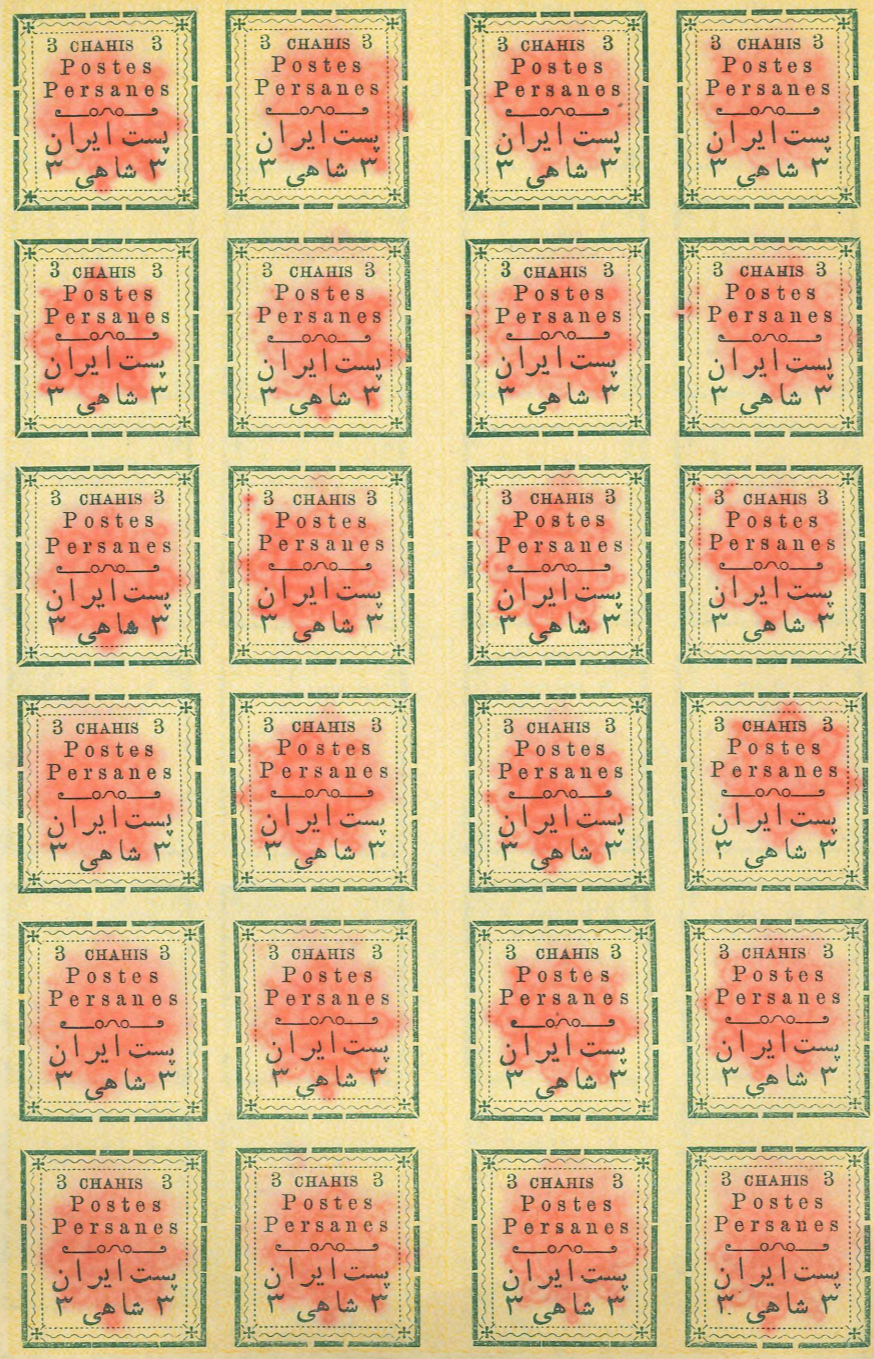
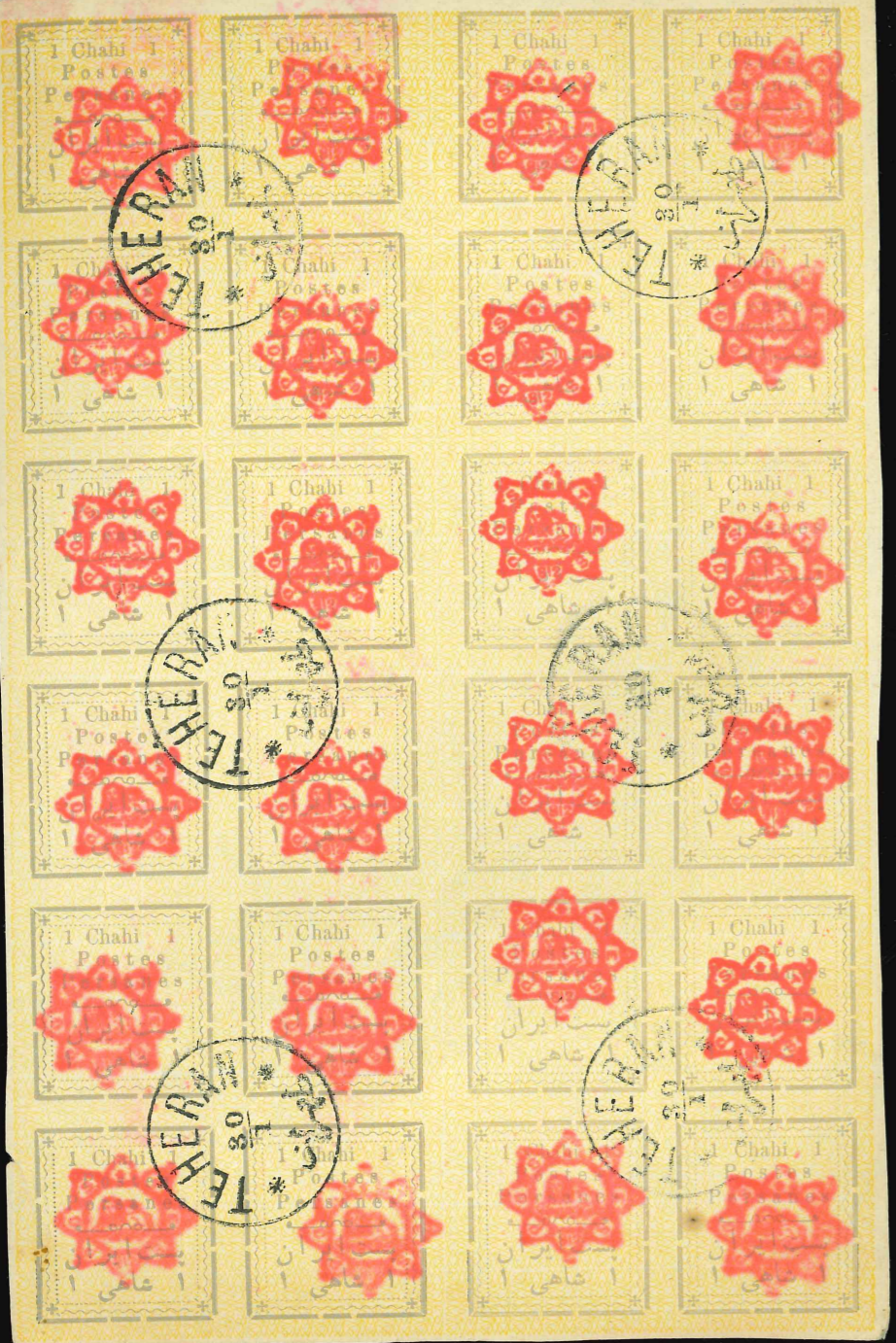


This is a "transitional" sheet and shows that the type was re-set before the second pane was printed. One difference is that the taller Persian character hitherto found on numbers 1, 6 and 8 is now also found on numbers 3, 5, 7 and 9. There are also slight differences in the Persian numerals on numbers 2 and 5.



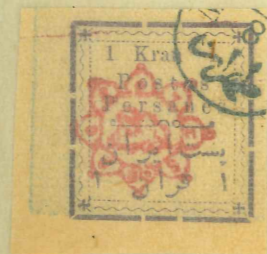








1 Kran.
2nd. Printing.



Provisional Issue (continued).
Second Series.

2 Krans.



54c 2

This value and the 10kr. were the last of this series to be printed and the plates show still further modifications. The most noticeable are the square ends to the bottom frame-line of number 3 and to the top of the left-hand frame-line of number 4.

50 Krans.



1903-4

Control in Blue
Nearly always 812.

These high values were used on
money orders. They are usually numbered
on the back.



One of each value is shown used but with no number on the back

1902

Type 1 "CHAHIS"

10 CHAHIS.

Upper half of sheet showing the six varieties printed
twice on same sheet

ON THIN SMOOTH PAPER.



WITHOUT GUM.

N° 12

Correct Overprint

"S" in NW angle
is straight



10 Chahis.

10 Chahis Plating of the

2



4



6

5

8



10

10



12



11



No dot
←

This value appears to have done postal use.

First Type
Mint with gum.

Varieties

3

8

9

12

1

8

11

6

5

2

5

9

→
Postmark

←

4

477

6

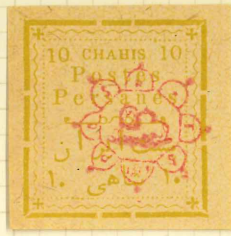


1

2

1902

MINT



TALLER NARROWER FIG 3



S. G. UTILE LEAF No. 3099. MADE IN ENGLAND



all No. 4. F.



5 KRANS

1902.

First Type-set Issue

with rose control instead of overprint.



Type C upright



On thick paper (No 3)

With dark background (No 10)



No 3



No 2

With overprint Control Type C inverted

Light shade (No 9)

Dark shade (No 9)

Without overprint Control



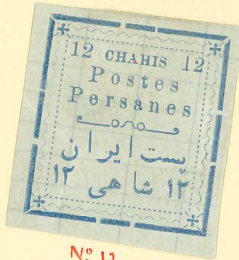
No 10. Printer's waste



No 2. Appears genuinely used.

Traces of control

7KW



No 12.

Possibly printer's trials.



No 1.



1901



No 10

1902
Second Issue. "Chahis"
12 Chahis.

STAGE IV

Similar to righthand pane of previous stage.
 With seven up-ward flourishes to end of Persian inscription
 and heavy P to certain Postes & Persanes.

Tête-bêche

- N° 4 N° 3 N° 9 N° 10.
 N° 3 - "Persanes" has a heavy "P"
 N° 9 - Long end up-stroke to Persian inscription



N° 11

N° 11

N° 11

Double
 Double Print

Stage IV
 2

2x40

Right "12" has break in

the "12"

↓

N° 4

2nd Issue 1902 "Chahis"

12 Chahis blue.

FIRST PRINTING.

With gum.

With type & control.

Note:-

Unused stamps of this value are extremely rare in the 1st Printing. These are the only blocks the writer has seen with genuine over-prints.

(For variations see notes against used stamps)



over

12 Chahis
Plating of printing (ii) a

3

4

6



MINT
and
EXTREMELY
RARE



"PEERLESS" SERIES Persian & inverted

12 Chahis

I doubt whether the reprintings IIb and IIc were ever used for postal purposes. All genuinely used copies appear to be IIa and are scarce.

7 - II(a)



1 - II(b)



8 - II(a)



7 - II(a)



II(a)

2



1



R.H. 1 2 widely spaced



GUM

II(c) II



II

GUM



5 Chahis.

This sheet has an earlier number than the complete sheet on the next page. The inner curly frame line at left on No. 11 is already very worn.

Note the thickened 1 on these sheet numbers.



Sheet Number

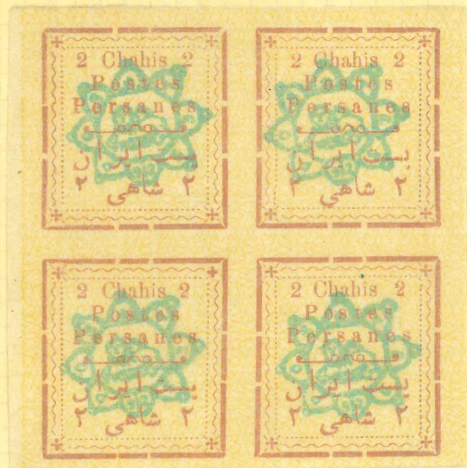
10470

The curious thing is that there seems to be more wear on these sheets with early numbers than on the later sheets, which show no evidence of re-touching.

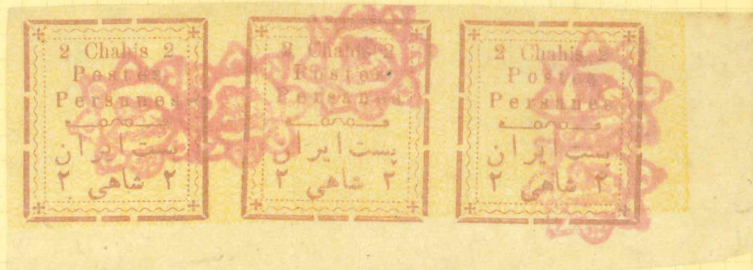
2 Chahis
Varieties



3A



L.H. pane - L.H. 2 dirty



12

11

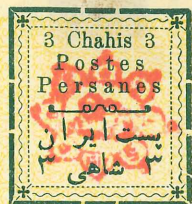
12

I doubt whether this value ever did
postal service.

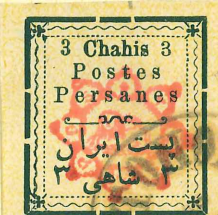
3 Chahis.

Plating of the

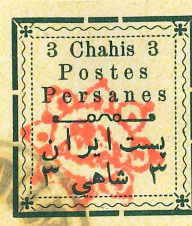
3 Chahis



Tall
3



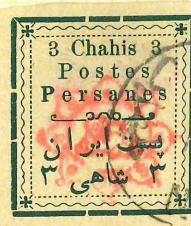
3



PERSANS



Dot



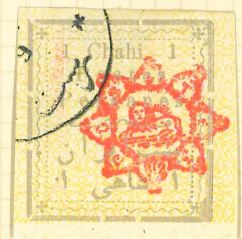
Dot



12



1 Chahi
Plating



THREE CHAHIS

Second printing. Each pane is identical, but the angle of the stamps indicates two operations.

Tall 8

